



**Transmission of material in this release is embargoed until  
 8:30 a.m. (ET) Tuesday, March 12, 2024**

USDL- 24-0484

Technical information: (202) 691-6555 • cesinfo@bls.gov • www.bls.gov/ces  
 Media contact: (202) 691-5902 • PressOffice@bls.gov

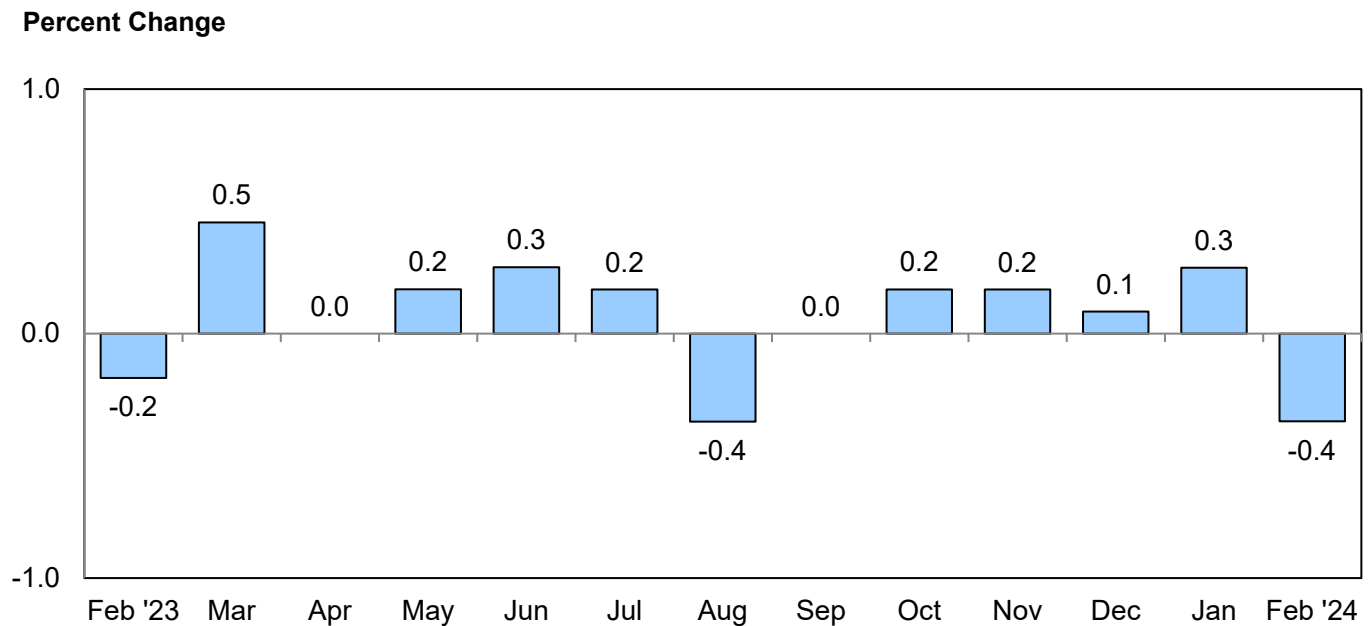
**REAL EARNINGS – FEBRUARY 2024**

**All employees**

Real average hourly earnings for all employees decreased 0.4 percent from January to February, seasonally adjusted, the U.S. Bureau of Labor Statistics reported today. This result stems from an increase of 0.1 percent in average hourly earnings combined with an increase of 0.4 percent in the Consumer Price Index for All Urban Consumers (CPI-U).

Real average weekly earnings were unchanged over the month due to the change in real average hourly earnings combined with a 0.3-percent increase in the average workweek.

**Chart 1: Over-the-month percent change in real average hourly earnings for all employees, seasonally adjusted, February 2023–February 2024**



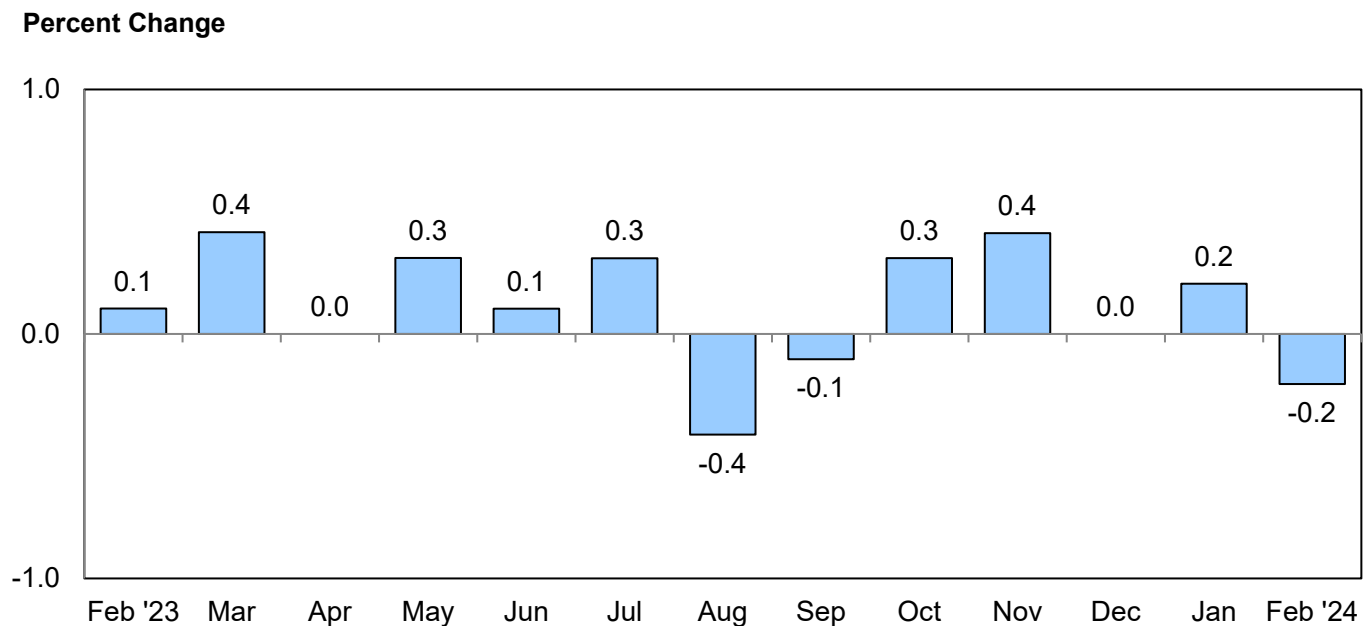
Real average hourly earnings increased 1.1 percent, seasonally adjusted, from February 2023 to February 2024. The change in real average hourly earnings combined with a decrease of 0.6 percent in the average workweek resulted in a 0.5-percent increase in real average weekly earnings over this period.

## Production and nonsupervisory employees

Real average hourly earnings for production and nonsupervisory employees decreased 0.2 percent from January to February, seasonally adjusted. This result stems from a 0.2-percent increase in average hourly earnings combined with an increase of 0.5 percent in the Consumer Price Index for Urban Wage Earners and Clerical Workers (CPI-W).

Real average weekly earnings increased 0.6 percent over the month due to the change in real average hourly earnings combined with a 0.9-percent increase in the average workweek.

**Chart 2: Over-the-month percent change in real average hourly earnings for production and nonsupervisory employees, seasonally adjusted, February 2023–February 2024**



From February 2023 to February 2024, real average hourly earnings increased 1.4 percent, seasonally adjusted. The change in real average hourly earnings combined with a decrease of 0.3 percent in the average workweek resulted in a 1.1-percent increase in real average weekly earnings over this period.

---

**Real Earnings for March 2024 is scheduled to be released on April 10, 2024, at 8:30 a.m. (ET).**

**Table A-1. Current and real (constant 1982-1984 dollars) earnings for all employees on private nonfarm payrolls, seasonally adjusted**

	Feb. 2023	Dec. 2023	Jan. 2024 <sup>p</sup>	Feb. 2024 <sup>p</sup>
Real average hourly earnings <sup>1</sup> .....	\$10.99	\$11.12	\$11.15	\$11.11
Real average weekly earnings <sup>1</sup> .....	\$379.32	\$382.62	\$381.22	\$381.20
Consumer Price Index for All Urban Consumers.....	301.509	308.742	309.685	311.054
Average hourly earnings.....	\$33.15	\$34.34	\$34.52	\$34.57
Average weekly hours.....	34.5	34.4	34.2	34.3
Average weekly earnings.....	\$1,143.68	\$1,181.30	\$1,180.58	\$1,185.75
<b>OVER-THE-MONTH PERCENT CHANGE</b>				
Real average hourly earnings <sup>1</sup> .....	-0.2	0.1	0.3	-0.4
Real average weekly earnings <sup>1</sup> .....	-0.4	0.1	-0.4	0.0
Consumer Price Index for All Urban Consumers.....	0.4	0.2	0.3	0.4
Average hourly earnings.....	0.2	0.3	0.5	0.1
Average weekly hours.....	-0.3	0.0	-0.6	0.3
Average weekly earnings.....	0.0	0.3	-0.1	0.4
<b>OVER-THE-YEAR PERCENT CHANGE</b>				
Real average hourly earnings <sup>1</sup> .....	-1.2	0.9	1.3	1.1
Real average weekly earnings <sup>1</sup> .....	-1.7	0.9	0.1	0.5
Consumer Price Index for All Urban Consumers.....	6.0	3.3	3.1	3.2
Average hourly earnings.....	4.7	4.3	4.4	4.3
Average weekly hours.....	-0.6	0.0	-1.2	-0.6
Average weekly earnings.....	4.1	4.3	3.2	3.7

<sup>1</sup> The Consumer Price Index for All Urban Consumers (CPI-U) is used to deflate the earnings series for all employees.

<sup>p</sup> Preliminary

**Table A-2. Current and real (constant 1982-1984 dollars) earnings for production and nonsupervisory employees on private nonfarm payrolls, seasonally adjusted<sup>1</sup>**

	Feb. 2023	Dec. 2023	Jan. 2024 <sup>p</sup>	Feb. 2024 <sup>p</sup>
Real average hourly earnings <sup>2</sup> .....	\$9.61	\$9.74	\$9.76	\$9.74
Real average weekly earnings <sup>2</sup> .....	\$325.62	\$329.26	\$327.12	\$329.08
Consumer Price Index for Urban Wage Earners and Clerical Workers.....	295.876	302.932	303.542	305.154
Average hourly earnings.....	\$28.42	\$29.51	\$29.64	\$29.71
Average weekly hours.....	33.9	33.8	33.5	33.8
Average weekly earnings.....	\$963.44	\$997.44	\$992.94	\$1,004.20
<b>OVER-THE-MONTH PERCENT CHANGE</b>				
Real average hourly earnings <sup>2</sup> .....	0.1	0.0	0.2	-0.2
Real average weekly earnings <sup>2</sup> .....	-0.2	0.4	-0.6	0.6
Consumer Price Index for Urban Wage Earners and Clerical Workers.....	0.3	0.2	0.2	0.5
Average hourly earnings.....	0.4	0.3	0.4	0.2
Average weekly hours.....	-0.3	0.3	-0.9	0.9
Average weekly earnings.....	0.1	0.6	-0.5	1.1
<b>OVER-THE-YEAR PERCENT CHANGE</b>				
Real average hourly earnings <sup>2</sup> .....	-0.2	1.2	1.7	1.4
Real average weekly earnings <sup>2</sup> .....	-1.1	1.2	0.2	1.1
Consumer Price Index for Urban Wage Earners and Clerical Workers.....	5.7	3.3	2.9	3.1
Average hourly earnings.....	5.4	4.5	4.7	4.5
Average weekly hours.....	-0.9	0.0	-1.5	-0.3
Average weekly earnings.....	4.5	4.5	3.2	4.2

<sup>1</sup> Data relate to production employees in mining and logging and manufacturing, construction employees in construction, and nonsupervisory employees in the service-providing industries. These groups account for approximately four-fifths of the total employment on private nonfarm payrolls.

<sup>2</sup> The Consumer Price Index for Urban Wage Earners and Clerical Workers (CPI-W) is used to deflate the earnings series for production and nonsupervisory employees.

p Preliminary

# Technical Note

The earnings series presented in this release are derived from the Bureau of Labor Statistics' Current Employment Statistics (CES) survey, a monthly establishment survey of employment, payroll, and hours. The deflators used for constant-dollar earnings series presented in this release come from the Consumer Price Indexes Program. The Consumer Price Index for All Urban Consumers (CPI-U) is used to deflate earnings for the all employees series, while the Consumer Price Index for Urban Wage Earners and Clerical Workers (CPI-W) is used to deflate earnings for the production and nonsupervisory employees series.

Seasonally adjusted data are used for estimates of percent change from the same month a year ago for current and constant average hourly and weekly earnings. Special techniques are applied to the CES hours and earnings data in the seasonal adjustment process to mitigate the effect of certain calendar-related fluctuations. Thus, over-the-year changes of these hours and earnings are best measured using seasonally adjusted series. A discussion of the calendar-related fluctuations in the hours and earnings data and the special techniques to remove them is available at <https://www.bls.gov/web/empsit/cestn.htm#section6e>.

Earnings series from the monthly establishment survey are estimated arithmetic averages (means) of the hourly and weekly earnings of all jobs in the private nonfarm sector of the economy, as well as of all production and nonsupervisory jobs in the private nonfarm sector of the economy. Average hourly earnings estimates are derived by dividing the estimated industry payroll by the corresponding paid hours. Average weekly hours estimates are similarly derived by dividing estimated aggregate hours by the corresponding number of jobs. Average weekly earnings estimates are derived by multiplying the average hourly earnings and the average weekly hours estimates. This is equivalent to dividing the estimated payroll by the corresponding number of jobs. The weekly and hourly earnings estimates for aggregate industries, such as the total private sector averages printed in this release, are derived by summing the corresponding payroll, hours, and employment estimates of the component industries. As a result, each industry receives a "weight" in the published averages that corresponds to its current level of activity (employment or total hours). This further implies that fluctuations and varying trends in employment in high-wage versus low-wage industries as well as wage rate changes influence the earnings averages.

There are several characteristics of the series presented in this release that limit their suitability for some types of economic analyses. (1) The denominator for the all employee weekly earnings series is the number of private nonfarm jobs. Similarly, the denominator of the production and nonsupervisory employee weekly earnings series is the number of private nonfarm production and nonsupervisory employee jobs. This number includes full-time and part-time jobs as well as the jobs held by multiple jobholders in the private nonfarm sector. These factors tend to result in weekly earnings averages significantly lower than the corresponding numbers for full-time jobs. (2) Annual earnings averages can differ significantly from the result obtained by multiplying average weekly earnings times 52 weeks. The difference may be due to factors such as turnovers and layoffs. (3) The series are the average earnings of all employees or all production and nonsupervisory jobs, not the earnings average of "typical" jobs or jobs held by "typical" workers. Specifically, there are no adjustments for occupational, age, or schooling variations or for household type or location. Many studies have established the significance of these factors and that their impact varies over time.

Seasonally adjusted data are preferred by some users for analyzing general earnings trends in the economy since they eliminate the effect of changes that normally occur at the same time and in about the same magnitude each year and, therefore, reveal the underlying trends and cyclical movements. Changes in average earnings may be due to seasonal changes in the proportion of workers in high-wage and low-wage industries or occupations or to seasonal changes in the amount of overtime work, and so on.

If you are deaf, hard of hearing, or have a speech disability, please dial 7-1-1 to access telecommunications relay services.