

Transmission of material in this release is embargoed until
8:30 a.m. (EDT) Friday, September 12, 2014

USDL-14-1675

Technical information: (202) 691-7101 • MXPinfo@bls.gov • www.bls.gov/mxp
Media contact: (202) 691-5902 • PressOffice@bls.gov

U.S. IMPORT AND EXPORT PRICE INDEXES – AUGUST 2014

Prices for U.S. imports decreased 0.9 percent in August following a 0.3-percent decline in July, the U.S. Bureau of Labor Statistics reported today. Both the August and July drops in overall import prices were driven by lower fuel prices. U.S. export prices declined 0.5 percent in August, after ticking up 0.1 percent the previous month.

Chart 1. One-month percent change in the Import Price Index: August 2013 – August 2014

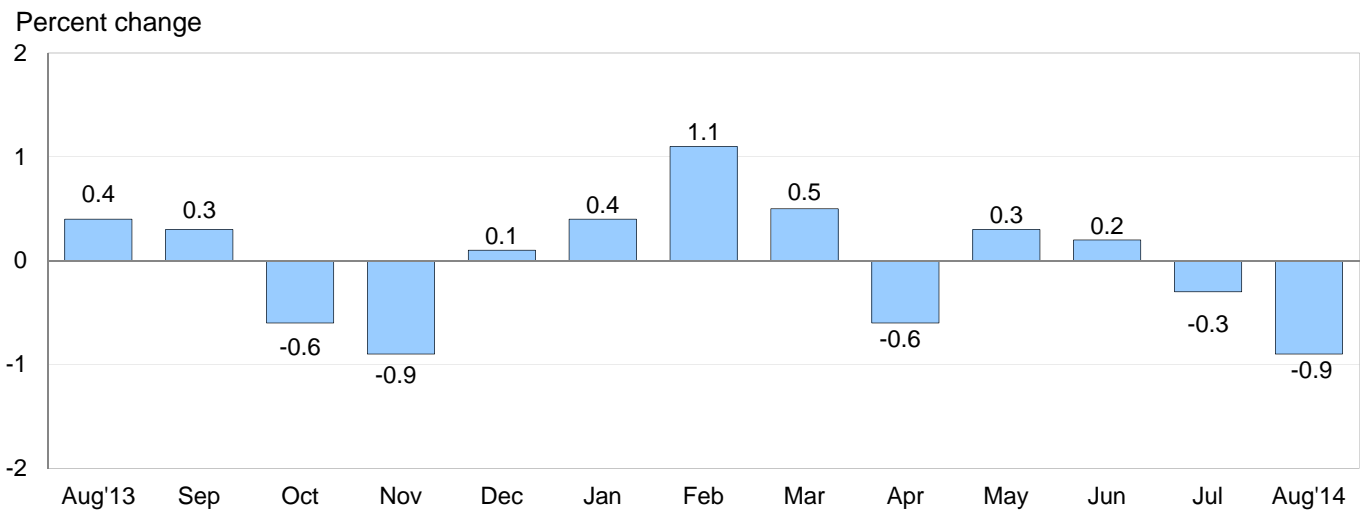
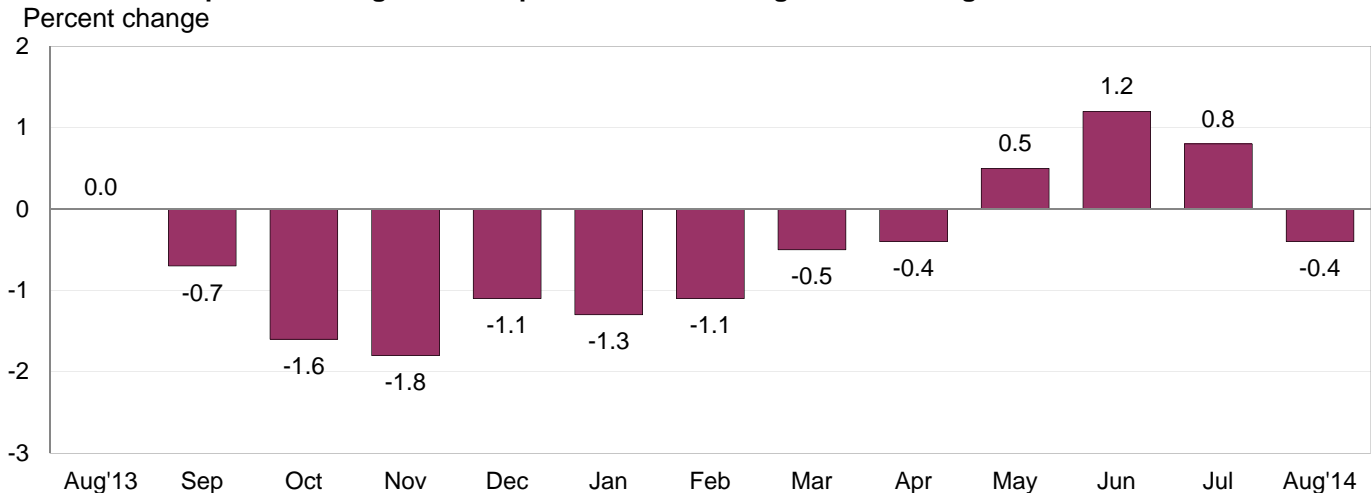


Chart 2. 12-month percent change in the Import Price Index: August 2013 – August 2014



All Imports: Prices for overall imports declined 0.9 percent in August, the largest monthly drop in import prices since a 0.9-percent decrease in November 2013; those were the largest declines since a 2.3-percent drop in June 2012. The August 2014 decrease resulted from lower fuel prices which more than offset a 0.1-percent increase in nonfuel prices. The price index for overall imports fell 0.4 percent for the year ended in August, the first 12-month decline since a 0.4-percent decrease in April.

Fuel Imports: Import fuel prices fell 4.6 percent in August following a 1.7-percent decline in July. The August drop in fuel prices was the largest 1-month decrease for the index since an 8.5-percent decline in June 2012. Both petroleum and natural gas prices contributed to the decrease in August fuel prices, declining 4.4 percent and 11.6 percent, respectively. Prices for imported fuel decreased 4.5 percent over the past year, after rising 4.1 percent between August 2012 and August 2013. The 12-month decrease for fuel prices in August was led by a 5.3-percent drop in petroleum prices which more than offset a 35.4-percent jump in natural gas prices.

All Imports Excluding Fuel: The 0.1-percent advance in nonfuel prices in August was the first monthly uptick in the price index for nonfuel imports since a 0.3-percent rise in March. Higher prices for foods, feeds, and beverages; nonfuel industrial supplies and materials; and automotive vehicles all contributed to the August increase. The price index for nonfuel imports rose 0.7 percent over the past year.

Table A. Percent change in import and export price indexes, selected categories

Month	IMPORTS			EXPORTS		
	All imports	Fuel imports	Nonfuel imports	All exports	Agricultural exports	Non-agricultural exports
2013						
August.....	0.4	2.6	-0.2	-0.5	-4.2	0.0
September.....	0.3	1.0	0.1	0.4	0.6	0.3
October.....	-0.6	-3.3	0.1	-0.6	-1.3	-0.5
November.....	-0.9	-4.2	0.0	0.2	-0.2	0.1
December.....	0.1	0.7	-0.1	0.4	0.3	0.4
2014						
January.....	0.4	0.8	0.3	0.3	0.0	0.4
February.....	1.1	5.9	0.0	0.8	1.4	0.6
March.....	0.5	1.0	0.3	0.9	2.8	0.7
April.....	-0.6	-2.6	0.0	-1.0	1.5	-1.2
May.....	0.3	1.2 ^r	0.0	0.1	0.3	0.0 ^r
June.....	0.2 ^r	1.5 ^r	-0.1	-0.5 ^r	-1.7	-0.3
July.....	-0.3 ^r	-1.7 ^r	0.0	0.1 ^r	-2.0 ^r	0.3
August.....	-0.9	-4.6	0.1	-0.5	-2.8	-0.3
Aug. 2012 to 2013.....	0.0	4.1	-1.0	-1.1	-5.6	-0.6
Aug. 2013 to 2014.....	-0.4	-4.5	0.7	0.4	-1.3	0.5

r Revised

Chart 3. One-month percent change in the Export Price Index: August 2013 – August 2014

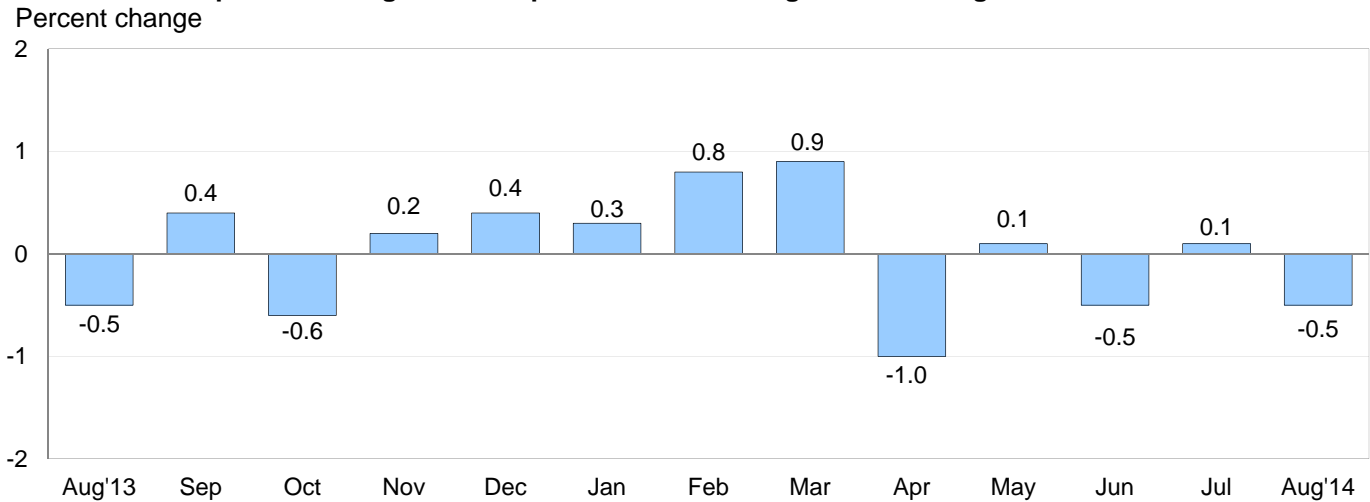


Chart 4. 12-month percent change in the Export Price Index: August 2013 – August 2014



All Exports: Export prices declined 0.5 percent in August following a 0.1-percent uptick in July and a 0.5-percent drop in June. In August, both agricultural and nonagricultural prices contributed to the decrease. Despite declines in August and June, export prices advanced 0.4 percent over the past 12 months as rising nonagricultural prices more than offset lower prices for agricultural exports.

Agricultural Exports: Prices for agricultural exports fell 2.8 percent in August, after recording declines of 2.0 percent and 1.7 percent in July and June. The August decrease was the largest monthly drop since the index fell 4.2 percent in August 2013. Declining prices for soybeans, fruit and corn were major contributors to the recent drop in agricultural prices; soybean prices fell 8.6 percent in August while the price indexes for fruit and corn decreased 5.4 percent and 6.5 percent, respectively. The decline in agricultural prices over the past 3 months drove the index down 1.3 percent for the year ended in August.

All Exports Excluding Agriculture: The price index for nonagricultural exports decreased 0.3 percent in August following a 0.3-percent rise the previous month. In August, lower prices for nonagricultural industrial supplies and materials and automotive vehicles more than offset higher capital goods prices. Despite the August decrease, nonagricultural export prices increased 0.5 percent over the past 12 months.

SELECTED AUGUST HIGHLIGHTS

Import Prices

Imports by Locality of Origin: The price index for imports from China edged down 0.1 percent in August, after decreasing 0.2 percent the previous month. The August decline was driven by the second consecutive 0.3-percent monthly drop in the price index for computers and other electronic equipment. Despite the recent decreases, import prices from China increased 0.2 percent for the year ended in August. Import prices from Canada and Mexico also fell in August, decreasing 1.6 percent and 0.3 percent, respectively. Both indexes were led by lower fuel prices. In contrast, prices for imports from the European Union ticked up 0.1 percent for the third consecutive month in August. The price index for imports from Japan was unchanged in August.

Nonfuel Industrial Supplies and Materials: The price index for nonfuel industrial supplies and materials ticked up 0.1 percent in August, after rising 0.5 percent in July. The August increase was led by a 0.3-percent advance in chemical prices.

Finished Goods: Prices for each of the major finished goods categories recorded little change in August. Automotive vehicles prices advanced 0.1 percent in August following a 0.7-percent drop in July that was the largest monthly decrease since a 1.1-percent decline in December 1992. The price indexes for capital goods and consumer goods each recorded no change in August.

Foods, Feeds, and Beverages: Foods, feeds, and beverages prices advanced for the second consecutive month in August, rising 0.6 percent following a 1.1-percent increase the previous month. Higher meat prices contributed to both monthly advances in overall foods, feeds, and beverages prices, rising 5.5 percent in August and 5.6 percent in July.

Transportation Services: Import air passenger fares fell 4.3 percent in August following a 2.8-percent decline the previous month. The August decrease was the largest monthly decline since a 6.4-percent drop in January, and was led by a 6.9-percent decrease in European fares. Despite the recent declines, import air passenger fares advanced 6.7 percent over the past year. The price index for import air freight rose 0.3 percent in August and 2.3 percent over the past 12 months.

Export Prices

Nonagricultural Industrial Supplies and Materials: Prices for nonagricultural industrial supplies and materials decreased 0.8 percent in August following a 0.7-percent increase in July and a 0.9-percent decline in June. The August drop was driven by a 3.1-percent decrease in export fuel prices.

Finished Goods: Prices for the major finished goods areas were mixed in August. Capital goods prices ticked up 0.1 percent, after edging down 0.2 percent the previous month. Prices for automotive vehicles fell 0.2 percent in August, the largest 1-month decline since the index decreased 0.3 percent in August 2012. The price index for export consumer goods recorded no change in August following a 0.4-percent increase in July.

Transportation Services: Export air passenger fares rose 5.2 percent in August, driven by higher Asian fares. Overall export fares also rose for the year ended in August, increasing 3.6 percent. Export air freight prices were unchanged in August and increased 9.4 percent over the past year.

Import and Export Price Index data for September 2014 are scheduled for release on Friday, October 10, 2014 at 8:30 a.m. (EDT).

Table 1. U.S. import price indexes and percent changes for selected categories of goods: August 2013 to August 2014

[2000=100, unless otherwise noted]

Description	End Use	Relative importance July 2014 ¹	Index		Percent change				
			July 2014	Aug. 2014	Annual	Monthly			
					Aug. 2013 to Aug. 2014	Apr. 2014 to May 2014	May 2014 to June 2014	June 2014 to July 2014	July 2014 to Aug. 2014
All commodities		100.000	140.0	138.8	-0.4	0.3	0.2	-0.3	-0.9
All imports excluding food and fuels (Dec. 2010=100)		74.741	102.3	102.3	0.4	0.1	0.0	-0.1	0.0
All imports excluding petroleum		81.006	115.8	115.7	0.8	-0.1	-0.2	0.0	-0.1
All imports excluding fuels (Dec. 2001=100)		79.999	119.6	119.7	0.7	0.0	-0.1	0.0	0.1
Foods, feeds, & beverages	0	5.258	178.6	179.7	3.4	-0.7	-1.6	1.1	0.6
Agricultural foods, feeds & beverages, excluding distilled beverages.....	00	4.016	196.2	198.0	3.7	-0.6	-1.5	1.4	0.9
Nonagricultural foods (fish, distilled beverages).....	01	1.242	138.6	138.2	2.4	-1.3	-1.8	0.3	-0.3
Industrial supplies & materials	1	32.974	252.6	245.6	-2.2	0.7	0.8	-0.8	-2.8
Industrial supplies & materials excluding petroleum.....		13.980	162.0	161.1	2.7	-0.9	-0.2	0.2	-0.6
Industrial supplies & materials excluding fuels (Dec. 2001=100).....		12.973	181.0	181.1	1.6	-0.1	-0.2	0.5	0.1
Industrial supplies & materials, durable....		7.875	170.0	169.9	2.5	0.1	-0.1	1.1	-0.1
Industrial supplies & materials nondurable excluding petroleum.....		5.098	152.0	150.1	2.8	-2.2	-0.5	-0.7	-1.3
Fuels & lubricants.....	10	20.000	344.3	328.5	-4.5	1.2	1.5	-1.7	-4.6
Petroleum & petroleum products.....	100	18.993	381.4	364.6	-5.3	1.9	1.7	-1.7	-4.4
Crude.....	10000	14.548	397.9	379.5	-5.6	1.4	2.2	-1.4	-4.6
Fuels, n.e.s.-coals & gas.....	101	0.857	147.8	133.6	29.1	-10.4	-1.3	-0.2	-9.6
Gas-natural.....	10110	0.716	137.6	121.6	35.4	-12.4	-1.5	0.0	-11.6
Paper & paper base stocks.....	11	0.535	113.4	113.6	0.2	1.1	-0.1	-0.2	0.2
Materials associated with nondurable supplies & materials.....	12	4.633	168.8	169.2	0.6	-0.6	-0.4	-0.5	0.2
Selected building materials.....	13	1.039	142.2	142.1	1.4	-0.6	0.2	0.4	-0.1
Unfinished metals related to durable goods.....	14	3.601	244.7	244.0	4.1	0.3	-0.5	2.1	-0.3
Finished metals related to durable goods.....	15	1.642	158.3	159.1	2.2	0.4	0.5	0.3	0.5
Nonmetals related to durable goods.....	16	1.523	112.0	112.2	-0.7	0.1	0.3	0.0	0.2
Capital goods	2	24.852	92.5	92.5	0.0	0.3	0.0	0.0	0.0
Electric generating equipment.....	20	3.011	120.3	120.4	0.6	0.4	-0.2	0.5	0.1
Nonelectrical machinery.....	21	19.919	85.1	85.1	-0.1	0.4	0.0	-0.1	0.0
Transportation equipment excluding motor vehicles (Dec. 2001=100).....	22	1.923	135.8	135.9	0.0	-0.1	0.0	0.0	0.1
Automotive vehicles, parts & engines	3	13.433	112.6	112.7	-0.7	0.0	0.0	-0.7	0.1
Consumer goods, excluding automobiles	4	23.483	108.3	108.3	0.8	0.0	0.0	0.0	0.0
Nondurables, manufactured.....	40	11.370	118.6	118.7	2.2	0.2	0.2	0.1	0.1
Durables, manufactured.....	41	10.918	97.6	97.5	-0.9	0.0	-0.1	-0.2	-0.1
Nonmanufactured consumer goods.....	42	1.195	121.3	120.8	3.8	0.0	-0.3	0.0	-0.4

¹ Relative importance figures are based on 2012 trade values.

NOTES: Data may be revised in each of the three months after original publication.

Dash = Not available

Table 2. U.S. export price indexes and percent changes for selected categories of goods: August 2013 to August 2014

[2000=100, unless otherwise noted]

Description	End Use	Relative importance July 2014 ¹	Index		Percent change				
			July 2014	Aug. 2014	Annual Aug. 2013 to Aug. 2014	Monthly			
						Apr. 2014 to May 2014	May 2014 to June 2014	June 2014 to July 2014	July 2014 to Aug. 2014
All commodities.....		100.000	133.1	132.4	0.4	0.1	-0.5	0.1	-0.5
Agricultural commodities.....		9.965	217.4	211.4	-1.3	0.3	-1.7	-2.0	-2.8
All exports excluding food and fuels (Dec. 2010=100).....		80.963	102.5	102.5	0.8	0.0	-0.2	0.1	0.0
Nonagricultural commodities.....		90.036	127.0	126.6	0.5	0.0	-0.3	0.3	-0.3
Foods, feeds, & beverages.....	0	9.194	219.4	213.5	0.0	0.4	-1.5	-1.4	-2.7
Agricultural foods, feeds & beverages, excluding distilled beverages.....	00	8.570	222.9	216.1	-0.5	0.6	-1.6	-1.6	-3.1
Nonagricultural foods (fish, distilled beverages).....	01	0.624	189.6	192.8	6.1	-1.8	-1.4	2.1	1.7
Industrial supplies & materials.....	1	33.327	178.0	176.5	-0.3	-0.1	-1.0	0.5	-0.8
Industrial supplies & materials, durable....		11.232	172.4	172.4	1.2	-0.2	-0.9	1.2	0.0
Industrial supplies & materials, nondurable.....		22.096	181.9	179.6	-1.0	-0.1	-1.0	0.1	-1.3
Agricultural industrial supplies & materials.....	10	1.395	192.7	190.5	-6.2	-1.3	-2.6	-4.2	-1.1
Nonagricultural industrial supplies & materials.....		31.933	177.6	176.2	0.0	-0.1	-0.9	0.7	-0.8
Fuels & lubricants.....	11	9.844	258.4	250.5	-3.1	0.2	-1.5	0.5	-3.1
Nonagricultural supplies & materials excluding fuels & building materials.....	12	21.102	167.4	167.8	1.6	-0.1	-0.7	1.0	0.2
Selected building materials.....	13	0.987	123.5	122.2	-1.8	-0.8	-2.0	-1.8	-1.1
Capital goods.....	2	36.272	107.2	107.3	0.8	0.2	0.0	-0.2	0.1
Electrical generating equipment.....	20	3.687	115.9	115.9	0.6	0.6	-0.1	0.3	0.0
Nonelectrical machinery.....	21	25.608	95.5	95.6	0.2	0.2	0.0	-0.2	0.1
Transportation equipment excluding motor vehicles (Dec. 2001=100).....	22	6.977	156.1	156.1	2.8	0.1	-0.1	-0.1	0.0
Automotive vehicles, parts & engines.....	3	9.452	114.1	113.9	0.4	0.1	0.1	0.0	-0.2
Consumer goods, excluding automotives.....	4	11.755	115.6	115.6	1.0	-0.1	0.1	0.4	0.0
Nondurables, manufactured.....	40	5.412	112.4	112.6	-1.2	-0.1	0.0	1.3	0.2
Durables, manufactured.....	41	4.952	111.9	111.9	0.2	0.0	0.0	-0.4	0.0

¹ Relative importance figures are based on 2012 trade values.

NOTES: Data may be revised in each of the three months after original publication.

Dash = Not available

Table 3. U.S. import price indexes and percent changes for selected categories of goods: August 2013 to August 2014

[December 2005=100, unless otherwise noted]

Description	NAICS	Relative importance July 2014 ¹	Index		Percent change				
			July 2014	Aug. 2014	Annual Aug. 2013 to Aug. 2014	Monthly			
						Apr. 2014 to May 2014	May 2014 to June 2014	June 2014 to July 2014	July 2014 to Aug. 2014
Nonmanufactured articles.....		17.548	173.3	165.8	-2.9	0.1	1.0	-1.0	-4.3
Agriculture, forestry, fishing and hunting.....	11	1.800	178.1	178.2	4.0	-3.3	-5.5	2.2	0.1
Crop production.....	111	1.369	184.7	184.9	4.6	-3.5	-6.6	2.4	0.1
Forestry and logging (Dec. 2012=100).....	113	0.138	78.8	76.2	-19.0	-6.0	2.2	-2.1	-3.3
Mining.....	21	15.748	172.5	164.2	-3.6	0.5	1.7	-1.3	-4.8
Mining (except oil and gas) (Dec. 2006=100).....	212	0.247	123.3	124.2	-4.5	-1.8	0.4	-0.3	0.7
Manufactured articles.....		82.051	116.4	116.3	0.3	0.3	0.1	-0.3	-0.1
Manufactured goods, part 1.....	31	10.504	125.9	126.7	2.4	-0.1	0.1	0.4	0.6
Food manufacturing.....	311	3.088	160.9	163.8	5.3	-0.4	0.3	0.8	1.8
Beverage and tobacco product manufacturing.....	312	0.936	117.4	117.5	3.5	-0.2	0.1	1.6	0.1
Textile mills (Dec. 2011=100).....	313	0.356	102.5	102.7	1.8	0.0	-0.1	0.5	0.2
Textile product mills.....	314	0.761	114.3	114.4	-0.3	0.0	-0.1	0.0	0.1
Apparel manufacturing.....	315	3.713	110.9	111.3	0.9	0.1	-0.1	0.0	0.4
Leather and allied product manufacturing.....	316	1.650	123.6	123.7	1.8	0.1	0.0	0.2	0.1
Manufactured goods, part 2.....	32	17.471	137.5	136.5	-0.1	0.9	0.1	-0.9	-0.7
Wood product manufacturing.....	321	0.626	121.8	121.5	2.2	-0.8	0.2	0.9	-0.2
Paper manufacturing.....	322	0.978	111.0	111.3	0.5	0.5	0.1	0.2	0.3
Printing and related support activities (Dec. 2013=100).....	323	0.186	99.6	99.6	-	-0.5	0.0	0.0	0.0
Petroleum and coal products manufacturing.....	324	4.050	161.3	155.0	-5.7	4.2	0.7	-2.7	-3.9
Chemical manufacturing.....	325	8.883	136.9	137.3	2.8	-0.1	-0.1	-0.4	0.3
Plastics and rubber products manufacturing.....	326	1.915	121.6	121.5	-2.9	-0.2	0.0	-1.1	-0.1
Nonmetallic mineral product manufacturing.....	327	0.833	130.3	130.4	0.8	-0.2	0.4	-0.2	0.1
Manufactured goods, part 3.....	33	54.077	108.1	108.1	0.2	0.2	0.0	-0.1	0.0
Primary metal manufacturing.....	331	4.225	161.0	160.7	4.4	0.6	-0.2	2.0	-0.2
Fabricated metal product manufacturing.....	332	2.665	126.8	127.2	0.3	0.1	0.1	-0.1	0.3
Machinery manufacturing.....	333	6.854	121.3	121.4	0.4	0.2	0.0	-0.2	0.1
Computer and electronic product manufacturing.....	334	15.881	80.0	79.9	-1.0	0.3	0.0	-0.2	-0.1
Electrical equipment, appliance, and component manufacturing.....	335	4.085	119.0	119.3	-0.1	0.3	-0.2	0.3	0.3
Transportation equipment manufacturing.....	336	14.295	111.3	111.3	-0.3	0.0	0.0	-0.5	0.0
Furniture and related product manufacturing.....	337	1.354	116.2	116.4	2.3	0.3	0.4	0.2	0.2
Miscellaneous manufacturing.....	339	4.719	122.5	122.4	1.2	0.2	-0.1	0.3	-0.1

¹ Relative importance figures are based on 2012 trade values.

NOTES: Data may be revised in each of the three months after original publication.

Dash = Not available

Table 4. U.S. export price indexes and percent changes for selected categories of goods: August 2013 to August 2014

[December 2005=100, unless otherwise noted]

Description	NAICS	Relative importance July 2014 ¹	Index		Percent change				
			July 2014	Aug. 2014	Annual	Monthly			
					Aug. 2013 to Aug. 2014	Apr. 2014 to May 2014	May 2014 to June 2014	June 2014 to July 2014	July 2014 to Aug. 2014
Nonmanufactured articles.....		7.079	157.5	150.6	-4.7	-0.2	-2.0	-4.4	-4.4
Agriculture, forestry, fishing and hunting.....	11	4.830	189.3	180.1	-7.6	-0.1	-3.0	-4.6	-4.9
Crop production.....	111	4.617	197.1	187.2	-7.4	0.4	-2.9	-4.8	-5.0
Mining.....	21	2.249	91.3	88.2	2.8	-0.3	0.1	-3.8	-3.4
Mining (except oil and gas).....	212	1.315	97.9	98.5	-2.0	-0.6	0.5	-0.8	0.6
Manufactured articles.....		90.971	121.0	120.7	0.3	0.1	-0.2	0.3	-0.2
Manufactured goods, part 1.....	31	7.305	158.8	157.8	4.1	0.3	0.1	0.6	-0.6
Food manufacturing.....	311	5.217	185.6	184.4	6.0	0.7	0.5	1.0	-0.6
Beverage and tobacco product manufacturing.....	312	0.510	115.0	111.6	-10.9	-1.9	-3.0	-2.7	-3.0
Leather and allied product manufacturing (Dec. 2013=100).....	316	0.299	109.4	109.8	-	0.5	0.1	2.1	0.4
Manufactured goods, part 2.....	32	26.186	132.2	131.4	-1.8	0.1	-0.6	0.7	-0.6
Wood product manufacturing.....	321	0.460	124.2	124.1	3.5	0.2	-0.2	-0.2	-0.1
Paper manufacturing.....	322	1.828	125.1	126.3	3.9	0.0	-0.9	0.9	1.0
Petroleum and coal products manufacturing.....	324	7.296	164.3	159.7	-5.4	0.6	-2.3	1.4	-2.8
Chemical manufacturing.....	325	13.391	128.5	128.7	-0.9	-0.2	0.1	0.6	0.2
Plastics and rubber products manufacturing.....	326	2.159	118.8	119.3	-0.7	0.2	0.2	-0.4	0.4
Nonmetallic mineral product manufacturing.....	327	0.773	113.3	113.3	1.3	0.2	0.0	0.0	0.0
Manufactured goods, part 3.....	33	57.481	113.0	113.0	0.8	0.1	-0.2	0.2	0.0
Primary metal manufacturing.....	331	4.741	150.9	150.5	1.8	-0.9	-1.7	3.1	-0.3
Fabricated metal product manufacturing.....	332	2.713	128.3	128.0	-2.2	0.0	0.1	0.4	-0.2
Machinery manufacturing.....	333	11.740	124.1	124.2	1.4	0.4	0.1	0.0	0.1
Computer and electronic product manufacturing.....	334	13.731	87.5	87.5	-1.2	0.1	0.0	-0.6	0.0
Electrical equipment, appliance, and component manufacturing.....	335	3.476	114.7	114.8	0.3	0.1	-0.2	0.2	0.1
Transportation equipment manufacturing.....	336	15.642	119.9	119.8	1.5	0.0	0.1	0.0	-0.1
Furniture and related product manufacturing (Dec. 2011=100).....	337	0.362	108.0	109.0	1.0	0.1	0.1	0.1	0.9
Miscellaneous manufacturing.....	339	5.076	125.1	125.3	3.6	-0.2	0.2	-0.4	0.2

¹ Relative importance figures are based on 2012 trade values.

NOTES: Data may be revised in each of the three months after original publication.

Dash = Not available

Table 5. U.S. import price indexes and percent changes for selected categories of goods: August 2013 to August 2014

[2000=100, unless otherwise noted]

Description	Harmoni- zied system	Relative importance July 2014 ¹	Index		Percent change				
			July 2014	Aug. 2014	Annual	Monthly			
					Aug. 2013 to Aug. 2014	Apr. 2014 to May 2014	May 2014 to June 2014	June 2014 to July 2014	July 2014 to Aug. 2014
Live animals; animal products.....	I	1.318	199.8	201.2	9.2	-1.0	-1.5	1.8	0.7
Meat and edible meat ofal.....	02	0.315	265.6	272.3	20.5	-0.5	2.4	5.4	2.5
Fish and crustaceans, molluscs and other aquatic invertebrates.....	03	0.687	139.4	137.0	-0.9	-1.4	-3.4	-0.9	-1.7
Vegetable products.....	II	1.635	198.9	199.6	-0.2	0.3	-6.8	1.3	0.4
Edible vegetables, roots, and tubers.....	07	0.386	365.3	362.8	2.6	15.3	-13.3	3.2	-0.7
Edible fruit and nuts; peel of citrus fruit or melons.....	08	0.392	97.7	100.4	-11.4	-13.1	-8.8	-3.1	2.8
Coffee, tea, mate and spices.....	09	0.351	250.7	256.1	11.8	6.6	-4.9	3.9	2.2
Animal or vegetable fats and oils (Dec. 2009=100).....	III	0.249	116.1	117.8	2.2	-0.3	0.3	0.3	1.5
Prepared foodstuffs, beverages, and tobacco.....	IV	2.515	162.6	163.8	3.4	-0.1	0.9	0.6	0.7
Sugars and sugar confectionary (Dec. 2012=100).....	17	0.169	90.4	92.0	1.4	1.7	3.5	-2.1	1.8
Cocoa and cocoa preparations (Dec. 2009=100).....	18	0.249	114.2	116.8	16.7	-1.2	6.5	0.1	2.3
Preparations of cereals, flour, starch or milk; bakers' wares (Dec. 2007=100).....	19	0.243	131.4	131.7	0.8	0.0	0.0	0.1	0.2
Preparations of vegetables, fruit, nuts, or other parts of plants.....	20	0.304	168.6	168.2	2.1	0.3	0.7	-0.6	-0.2
Beverages, spirits, and vinegar.....	22	0.948	127.9	128.2	3.2	-0.1	-0.1	1.7	0.2
Mineral products.....	V	19.899	347.1	331.3	-4.5	1.3	1.6	-1.7	-4.6
Mineral fuels, oils and residuals, bituminous substances and mineral waxes.....	27	19.639	344.3	328.3	-4.5	1.4	1.7	-1.7	-4.6
Products of the chemical or allied industries.....	VI	8.127	152.5	152.4	2.9	0.0	-0.1	0.0	-0.1
Inorganic chemicals.....	28	0.607	309.3	307.8	-3.0	2.5	-1.2	-5.0	-0.5
Organic chemicals.....	29	2.399	136.2	136.2	1.1	-1.0	-0.3	0.8	0.0
Pharmaceutical products.....	30	3.353	134.2	134.3	7.0	0.3	0.6	0.1	0.1
Fertilizers (Dec. 2009=100).....	31	0.316	109.6	108.0	-2.8	-1.2	-2.4	1.2	-1.5
Tanning extracts; dye, pigments, varnish, paints & putty (Dec. 2011=100).....	32	0.175	102.6	105.3	11.5	-0.4	-0.2	1.4	2.6
Miscellaneous chemical products.....	38	0.462	93.2	93.2	-6.0	-0.1	-0.1	-0.4	0.0
Plastics and articles thereof; rubber and articles thereof.....	VII	3.125	147.0	146.6	-2.3	-0.4	0.1	-0.7	-0.3
Plastics and articles thereof.....	39	2.012	149.9	149.8	1.2	0.0	0.1	0.1	-0.1
Rubber and articles thereof.....	40	1.113	143.3	142.5	-8.1	-1.2	0.2	-2.1	-0.6
Raw hides, skins, leather, furskins, travel goods, etc.....	VIII	0.613	127.8	127.9	1.9	0.5	-0.9	0.1	0.1
Articles of leather; travel goods, bags, etc. of various materials.....	42	0.577	130.3	130.3	2.7	0.5	-0.2	0.1	0.0
Wood, wood charcoal, cork, straw, basketware and wickerwork.....	IX	0.656	147.7	147.3	2.2	-0.9	0.1	0.9	-0.3
Woodpulp, recovered paper, and paper products.....	X	1.037	113.6	113.6	-0.3	0.5	-0.1	-0.1	0.0
Paper and paperboard; articles of paper pulp, paper or paperboard.....	48	0.684	107.3	107.2	-0.5	-0.1	0.0	0.1	-0.1
Printed matter (Dec. 2013=100).....	49	0.193	99.5	99.5	-	-0.1	0.0	0.0	0.0
Textile and textile articles.....	XI	4.699	114.1	114.3	0.4	0.0	-0.2	0.1	0.2
Articles of apparel and clothing accessories, knitted or crocheted.....	61	1.833	102.9	102.9	-0.1	0.0	-0.1	0.0	0.0

See footnotes at end of table.

Table 5. U.S. import price indexes and percent changes for selected categories of goods: August 2013 to August 2014 — Continued
 [2000=100, unless otherwise noted]

Description	Harmoni- zied system	Relative importance July 2014 ¹	Index		Percent change				
			July 2014	Aug. 2014	Annual	Monthly			
					Aug. 2013 to Aug. 2014	Apr. 2014 to May 2014	May 2014 to June 2014	June 2014 to July 2014	July 2014 to Aug. 2014
Articles of apparel and clothing accessories, not knitted or crocheted.....	62	1.706	119.0	119.7	1.4	-0.1	-0.3	0.2	0.6
Made-up or worn textile articles.....	63	0.548	108.0	108.0	0.1	-0.1	0.1	0.0	0.0
Headgear, umbrellas, artificial flowers, etc...	XII	1.325	122.1	122.2	1.1	0.2	0.0	0.2	0.1
Footwear and parts of such articles.....	64	1.144	121.5	121.7	1.5	0.2	0.0	0.1	0.2
Stone, plaster, cement, asbestos, ceramics, glass etc.....	XIII	0.770	132.9	133.0	0.3	-0.2	0.4	-0.2	0.1
Articles of stone, plaster, cement, asbestos, or mica (Dec. 2001=100).....	68	0.253	125.4	125.5	-0.6	-0.4	0.9	-0.8	0.1
Ceramic products.....	69	0.238	141.6	141.8	0.6	-0.1	0.4	0.0	0.1
Glass and glassware.....	70	0.279	129.6	129.5	0.5	-0.1	0.0	0.0	-0.1
Pearls, stones, precious metals, imitation jewelry, and coins.....	XIV	2.691	185.8	184.3	2.7	-0.7	-1.3	3.1	-0.8
Base metals and articles of base metals. ...	XV	5.348	183.5	184.2	3.1	0.8	0.4	0.3	0.4
Iron and steel.....	72	1.271	223.3	222.3	3.3	0.5	-0.3	0.4	-0.4
Articles of iron or steel.....	73	1.676	154.4	154.7	0.7	0.4	0.4	0.3	0.2
Copper and articles thereof.....	74	0.431	324.9	333.6	4.1	1.7	-0.5	-0.7	2.7
Aluminum and articles thereof.....	76	0.726	141.7	143.9	6.4	1.0	2.2	0.6	1.6
Tools, implements, cutlery, spoons and forks, of base metal; parts thereof.....	82	0.391	129.1	129.1	-0.1	0.0	-0.1	0.0	0.0
Miscellaneous articles of base metal.....	83	0.442	136.8	138.3	2.2	0.1	0.0	0.1	1.1
Machinery, electrical equipment, TV image and sound recorders, parts, etc.....	XVI	26.974	84.4	84.4	-0.5	0.2	0.0	-0.2	0.0
Machinery and mechanical appliances; parts thereof.....	84	14.024	89.5	89.5	0.0	0.6	-0.1	-0.1	0.0
Electrical machinery and equip, sound and TV recorders & reproducers, parts.....	85	12.950	79.5	79.4	-1.0	0.0	-0.1	-0.3	-0.1
Vehicles, aircraft, vessels and associated transport equipment.....	XVII	11.963	115.4	115.5	-0.4	0.0	0.0	-0.6	0.1
Motor vehicles and their parts.....	87	10.952	114.1	114.2	-0.4	0.0	0.0	-0.7	0.1
Aircraft, spacecraft, and parts thereof (Dec. 2002=100).....	88	0.911	120.0	119.8	-0.3	-0.2	0.0	0.2	-0.2
Optical, photo, measuring, medical & musical instruments; & timepieces.....	XVIII	3.425	104.8	105.1	1.1	0.0	0.2	-0.1	0.3
Optical, photographic, measuring and medical instruments.....	90	3.128	101.6	102.0	1.1	0.1	0.2	-0.1	0.4
Clocks and watches and parts thereof.....	91	0.240	143.1	143.1	1.6	-0.1	-0.1	-0.6	0.0
Miscellaneous manufactured articles.....	XX	3.551	113.9	114.0	1.1	0.1	0.1	0.4	0.1
Furniture & stuffed furnishings; lamps & lighting fittings, nesoi; prefab bldgs.....	94	2.070	118.3	118.4	1.5	0.2	0.1	0.5	0.1
Toys, games and sports equipment; parts and accessories thereof.....	95	1.249	105.9	105.9	0.8	0.1	-0.1	0.2	0.0
Miscellaneous manufactured articles.....	96	0.231	135.1	135.2	-2.7	-0.3	0.3	-0.3	0.1

¹ Relative importance figures are based on 2012 trade values.

NOTES: Data may be revised in each of the three months after original publication.

Dash = Not available

Table 6. U.S. export price indexes and percent changes for selected categories of goods: August 2013 to August 2014

[2000=100, unless otherwise noted]

Description	Harmoni- zied system	Relative importance July 2014 ¹	Index		Percent change				
			July 2014	Aug. 2014	Annual	Monthly			
					Aug. 2013 to Aug. 2014	Apr. 2014 to May 2014	May 2014 to June 2014	June 2014 to July 2014	July 2014 to Aug. 2014
Live animals; animal products.....	I	2.276	251.9	253.6	17.0	0.0	-1.2	4.0	0.7
Meat & edible meat offal (Dec. 2006=100)...	02	1.376	199.1	200.7	20.4	2.1	1.2	5.3	0.8
Fish and crustaceans, molluscs and other aquatic invertebrates.....	03	0.360	206.8	212.1	11.9	-2.7	-1.6	3.3	2.6
Vegetable products.....	II	4.533	242.7	229.0	-7.1	0.7	-2.9	-3.9	-5.6
Edible fruit and nuts; peel of citrus fruit or melons.....	08	1.076	167.9	163.6	2.1	0.4	-4.8	-3.5	-2.6
Cereals.....	10	1.075	237.0	225.7	-16.1	1.7	-8.7	-3.9	-4.8
Oilseeds and misc. grains, seeds, fruits, plants, straw and fodder.....	12	1.933	280.5	258.3	-2.2	0.3	1.1	-4.6	-7.9
Animal or vegetable fats and oils (Dec. 2009=100).....	III	0.250	114.7	112.7	-10.2	0.2	-1.0	-1.3	-1.7
Prepared foodstuffs, beverages, and tobacco.....	IV	2.907	167.2	163.8	-2.0	-0.2	-0.2	-1.4	-2.0
Preparations of vegetables, fruit, nuts or other parts of plants (Dec. 2009=100).....	20	0.349	118.1	118.1	4.8	0.0	0.0	-0.8	0.0
Beverages, spirits, and vinegar (Dec. 2008=100).....	22	0.483	110.8	110.8	-1.8	0.1	-0.8	0.1	0.0
Residues and waste from the food industries; prepared animal feed.....	23	0.721	264.3	244.0	-10.1	-0.7	-0.8	-5.4	-7.7
Mineral products.....	V	9.551	296.9	288.7	-4.1	0.3	-1.7	0.3	-2.8
Ores, slag and ash (Dec. 2012=100).....	26	0.450	96.6	99.2	13.8	2.1	1.6	1.7	2.7
Mineral fuels, oils and residuals, bituminous substances and mineral waxes.....	27	8.919	293.5	284.4	-5.0	0.1	-1.9	0.3	-3.1
Products of the chemical or allied industries.....	VI	10.866	150.7	150.8	-1.3	-0.1	0.5	0.7	0.1
Inorganic chemicals.....	28	0.870	170.7	170.7	-6.6	0.5	-0.8	-0.6	0.0
Organic chemicals.....	29	3.241	169.7	169.9	3.2	0.2	0.3	4.1	0.1
Pharmaceutical products.....	30	2.579	116.0	116.2	-3.8	0.1	0.3	0.2	0.2
Fertilizers (Dec. 2012=100).....	31	0.308	86.1	87.0	-5.0	-0.2	-0.4	1.5	1.0
Essential oils and resinoids; perfumery cosmetic or toilet preparations.....	33	0.706	133.6	133.6	-1.5	0.2	-0.1	0.1	0.0
Soap; lubricants; waxes, polishing or scouring products; candles, pastes.....	34	0.448	116.5	117.1	-3.1	0.3	0.4	-3.4	0.5
Miscellaneous chemical products.....	38	1.747	152.9	151.9	-1.6	-1.2	2.3	-2.6	-0.7
Plastics and articles thereof; rubber and articles thereof.....	VII	5.183	150.3	151.0	1.7	-0.1	-0.1	-0.1	0.5
Plastics and articles thereof.....	39	4.211	145.2	145.8	2.2	0.0	-0.1	0.0	0.4
Rubber and articles thereof.....	40	0.972	172.1	173.1	-0.8	-0.1	-0.2	-0.7	0.6
Raw hides, skins, leather, furskins, travel goods, etc.....	VIII	0.454	161.1	162.4	12.3	0.1	0.2	1.3	0.8
Woodpulp, recovered paper, and paper products.....	X	2.286	125.4	126.4	3.6	-0.4	-1.0	1.3	0.8
Woodpulp and recovered paper.....	47	0.686	130.2	131.9	4.9	-1.2	-2.8	2.7	1.3
Paper and paperboard; articles of paper pulp, paper or paperboard.....	48	1.176	124.7	125.5	4.2	0.2	-0.1	1.1	0.6
Textile and textile articles.....	XI	1.874	131.2	131.1	-0.4	-0.3	-1.2	-1.9	-0.1
Cotton, including yarns and woven fabrics thereof.....	52	0.569	140.1	139.9	-4.3	-1.0	-3.7	-6.2	-0.1
Stone, plaster, cement, asbestos, ceramics, glass etc.....	XIII	0.744	120.2	120.3	1.7	0.3	0.0	0.0	0.1
Glass and glassware.....	70	0.381	98.7	98.9	1.5	0.5	-0.1	0.0	0.2

See footnotes at end of table.

Table 6. U.S. export price indexes and percent changes for selected categories of goods: August 2013 to August 2014 — Continued
 [2000=100, unless otherwise noted]

Description	Harmonized system	Relative importance July 2014 ¹	Index		Percent change				
			July 2014	Aug. 2014	Annual	Monthly			
					Aug. 2013 to Aug. 2014	Apr. 2014 to May 2014	May 2014 to June 2014	June 2014 to July 2014	July 2014 to Aug. 2014
Pearls, stones, precious metals, imitation jewelry, and coins.....	XIV	4.482	252.8	251.7	4.4	-1.3	-1.7	2.6	-0.4
Base metals and articles of base metals. ...	XV	5.321	164.9	165.4	0.8	0.6	-0.1	1.0	0.3
Iron and steel.....	72	1.426	190.1	191.8	4.9	1.1	-0.7	-0.8	0.9
Copper and articles thereof.....	74	0.615	231.9	229.9	-0.9	0.2	0.5	3.1	-0.9
Aluminum and articles thereof.....	76	0.864	124.0	126.1	3.6	2.0	0.3	3.5	1.7
Tools, implements, cutlery, spoons and forks, of base metal; parts thereof.....	82	0.413	141.6	141.7	6.6	0.3	-0.1	2.2	0.1
Miscellaneous articles of base metal.....	83	0.313	147.1	147.1	-0.1	0.0	0.0	0.0	0.0
Machinery, electrical equipment, TV image and sound recorders, parts, etc.....	XVI	27.734	97.3	97.2	0.0	0.2	0.0	-0.3	-0.1
Machinery and mechanical appliances; parts thereof.....	84	16.786	112.7	112.6	1.1	0.4	-0.1	-0.2	-0.1
Electrical machinery and equipment and parts and accessories thereof.....	85	10.948	80.5	80.6	-1.5	0.1	-0.1	-0.5	0.1
Vehicles, aircraft, vessels and associated transport equipment.....	XVII	13.447	130.0	129.9	1.3	0.1	0.1	0.0	-0.1
Motor vehicles and their parts.....	87	8.756	115.3	115.0	1.0	0.1	0.1	0.1	-0.3
Optical, photo, measuring, medical & musical instruments; & timepieces.....	XVIII	5.994	107.5	107.9	0.9	0.0	0.0	-0.2	0.4
Miscellaneous manufactured articles.....	XX	1.412	110.5	111.0	0.2	-0.3	0.0	0.0	0.5
Furniture; stuffed furnishings; lamps and lighting fittings nesoi;.....	94	0.783	121.8	123.0	0.3	-0.6	0.1	0.0	1.0
Toys, games and sports equipment; parts and accessories thereof.....	95	0.476	89.5	89.5	0.2	0.0	0.0	0.0	0.0

¹ Relative importance figures are based on 2012 trade values.

NOTES: Data may be revised in each of the three months after original publication.

Dash = Not available

Table 7. U.S. import price indexes and percent changes by locality of origin: August 2013 to August 2014
 [2000=100, unless otherwise noted]

Description	Relative importance July 2014 ¹	Index		Percent change				
		July 2014	Aug. 2014	Annual	Monthly			
				Aug. 2013 to Aug. 2014	Apr. 2014 to May 2014	May 2014 to June 2014	June 2014 to July 2014	July 2014 to Aug. 2014
Industrialized Countries²	100.000	134.0	133.2	1.0	0.2	0.1	0.1	-0.6
Nonmanufactured articles.....	13.232	257.8	245.3	-2.0	-0.4	1.4	0.0	-4.8
Manufactured articles.....	86.191	124.1	124.2	1.3	0.3	0.0	0.1	0.1
Other Countries³	100.000	138.5	137.2	-1.4	0.3	0.1	-0.2	-0.9
Nonmanufactured articles.....	20.109	349.3	335.1	-4.7	0.3	1.0	-1.0	-4.1
Manufactured articles.....	79.640	109.9	109.7	-0.4	0.2	-0.1	0.0	-0.2
Canada	100.000	156.8	154.3	-0.1	-0.3	0.6	0.3	-1.6
Nonmanufactured articles.....	33.850	249.5	237.2	-1.4	-0.4	1.4	-0.2	-4.9
Manufactured articles.....	65.290	135.9	136.1	0.2	-0.3	0.4	0.4	0.1
European Union⁴	100.000	139.2	139.3	3.0	0.4	0.1	0.1	0.1
Manufactured articles.....	99.305	135.3	135.5	3.0	0.3	0.1	0.1	0.1
France (Dec. 2003=100)	100.000	123.1	123.1	1.3	0.6	0.3	-0.2	0.0
Germany (Dec. 2003=100)	100.000	119.0	118.9	2.7	0.2	0.4	-0.8	-0.1
United Kingdom (Dec. 2003=100)	100.000	132.2	132.0	3.4	0.5	0.2	0.7	-0.2
Latin America⁵	100.000	172.5	170.6	-2.6	0.3	-0.2	-0.5	-1.1
Nonmanufactured articles.....	29.339	371.7	357.0	-6.4	0.3	0.7	-1.0	-4.0
Manufactured articles.....	70.252	129.9	129.9	-0.8	0.3	-0.6	-0.2	0.0
Mexico (Dec. 2003=100)	100.000	141.4	141.0	-2.0	0.0	-0.1	-0.5	-0.3
Nonmanufactured articles (Dec. 2008=100).....	16.793	195.7	190.3	-7.3	-0.1	-0.4	-2.7	-2.8
Manufactured articles (Dec. 2008=100)...	82.955	92.7	92.9	-0.7	0.0	0.0	0.0	0.2
Pacific Rim (Dec. 2003=100)⁶	100.000	102.5	102.5	-0.5	0.0	0.0	-0.2	0.0
China (Dec. 2003=100)	100.000	103.9	103.8	0.2	0.3	0.0	-0.2	-0.1
Japan	100.000	98.6	98.6	-1.4	-0.1	0.0	-0.3	0.0
Asian NICs⁷	100.000	88.9	89.2	-1.8	0.0	0.0	0.0	0.3
ASEAN (Dec. 2003=100)⁸	100.000	103.7	103.7	-0.7	-0.1	-0.3	-0.2	0.0
Asia Near East (Dec. 2003=100)⁹	100.000	266.2	254.6	-4.4	-1.0	0.1	0.2	-4.4

¹ Relative importance figures are based on 2012 trade values.

² Western Europe, Canada, Japan, Australia, New Zealand and South Africa.

³ Eastern Europe, Latin America, OPEC countries, and other countries in Asia, Africa and the Western Hemisphere.

⁴ European Union countries.

⁵ Mexico, Central America, South America and the Caribbean.

⁶ China, Japan, Australia, Brunei, Indonesia, Macao, Malaysia, New Zealand, Papua New Guinea, Philippines and the Asian Newly Industrialized Countries.

⁷ Asian Newly Industrialized Countries - Hong Kong, Singapore, South Korea and Taiwan.

⁸ Association of Southeast Asian Nations - Brunei, Cambodia, Indonesia, Laos, Malaysia, Myanmar, Philippines, Singapore, Thailand and Vietnam.

⁹ Bahrain, Iran, Iraq, Israel, Jordan, Kuwait, Lebanon, Oman, Qatar, Saudi Arabia, Syria, United Arab Emirates and Yemen.

NOTES: Data may be revised in each of the three months after original publication.

Regions are not mutually exclusive.

Dash = Not available

Table 8. U.S. international price indexes and percent changes for selected transportation services: August 2013 to August 2014

[2000=100, unless otherwise noted]

Description	Relative importance July 2014 ¹	Index		Percent change				
		July 2014	Aug. 2014	Annual Aug. 2013 to Aug. 2014	Monthly			
					Apr. 2014 to May 2014	May 2014 to June 2014	June 2014 to July 2014	July 2014 to Aug. 2014
Air Freight								
Import Air Freight	100.000	175.2	175.8	2.3	-0.1	0.0	-0.3	0.3
Europe (Dec. 2003=100).....	28.566	179.5	179.1	9.7	0.1	0.2	-0.7	-0.2
Asia.....	68.262	151.0	152.0	0.2	-0.1	-0.1	-0.2	0.7
Export Air Freight	100.000	159.9	159.9	9.4	5.8	0.0	-0.2	0.0
Europe (Dec. 2006=100).....	37.048	143.0	143.0	8.5	5.4	0.0	-0.1	0.0
Inbound Air Freight	100.000	165.0	165.1	2.8	0.5	0.1	-0.2	0.1
Europe (Dec. 2003=100).....	27.428	159.2	158.7	8.0	0.1	0.1	-0.3	-0.3
Asia.....	62.998	147.4	147.7	1.4	0.8	0.0	-0.1	0.2
Outbound Air Freight	100.000	153.2	153.2	5.2	3.2	0.1	0.0	0.0
Europe (Dec. 2003=100).....	33.478	172.0	172.0	7.6	3.6	0.2	0.0	0.0
Asia.....	47.139	145.2	145.2	4.4	2.9	0.1	0.0	0.0
Air Passenger Fares								
Import Air Passenger Fares	100.000	202.7	193.9	6.7	2.1	6.9	-2.8	-4.3
Europe.....	42.454	223.7	208.2	3.1	3.8	8.7	-5.3	-6.9
Asia.....	24.769	164.3	159.0	1.7	8.3	5.8	-1.9	-3.2
Latin America/Caribbean.....	8.585	172.1	173.4	0.1	-3.3	0.5	1.7	0.8
Export Air Passenger Fares	100.000	203.6	214.1	3.6	2.0	4.8	3.6	5.2
Europe.....	33.179	261.9	240.1	-4.0	4.3	13.2	-0.6	-8.3
Asia.....	32.954	171.5	218.0	7.7	8.8	1.4	1.9	27.1
Latin America/Caribbean.....	19.241	187.4	193.9	-4.4	-2.3	1.3	-4.8	3.5

¹ Relative importance figures are based on 2012 trade values.

NOTES: Data may be revised in each of the three months after original publication.

Dash = Not available

TECHNICAL NOTE

Import and Export Merchandise and Services Price Indexes -- All indexes use a modified Laspeyres formula and are not seasonally adjusted. Price indexes are reweighted annually, with a two-year lag in the weights. Published series use a base year of 2000=100 where possible. More detailed index series and additional information may be obtained at <http://www.bls.gov/mxp>, or by calling (202) 691-7101.

Merchandise Goods Classification Systems -- The merchandise price indexes are published using three classification systems. Items are classified by end use according to the Bureau of Economic Analysis Classification System, by industry according to the North American Industry Classification System (NAICS), and by product category according to the Harmonized System (HS). While classification by end use and product category are self-explanatory, some notes are in order for classifying items by industry. In the NAICS imports and exports tables, items are classified by output industry, not input industry. As an example, NAICS import index 326 (plastics and rubber products manufacturing) include outputs such as manufactured plastic rather than inputs such as petroleum. The NAICS classification structure also matches the classification system used by the PPI (Producer Price Index) to produce the NAICS primary products indexes.

Import Price Indexes -- Products have been classified by the Harmonized Tariff Schedule of the United States Annotated (TSUSA). Import prices are based on U.S. dollar prices paid by the U.S. importer. The prices are generally either "free on board" (f.o.b.) foreign port or "cost, insurance, and freight" (c.i.f.) U.S. port transaction prices, depending on the practices of the individual industry. The index for crude petroleum is calculated from data collected by the U.S. Department of Energy.

Export Price Indexes -- Products have been classified by the Harmonized Schedule B classification system of the U.S. Bureau of the Census. The prices used are generally either "free alongside ship" (f.a.s.) factory or "free on board" (f.o.b.) transaction prices, depending on the practices of the individual industry. Prices used in the grain index, excluding rice, are obtained from the U.S. Department of Agriculture.

Services Price Indexes -- Starting in September 2008 the Import Air Passenger Fares Indexes represent changes in the average revenue per passenger received by foreign carriers from U.S. residents and are calculated from data obtained from an airline consulting service. These data include tickets sold by travel agencies and travel websites. Tickets sold directly by the airlines are excluded, as are frequent flyer tickets generally. Starting in January 2008 the Export Air Passenger Fares Indexes represent changes in the average revenue per passenger received by U.S. carriers from foreign residents and are calculated from data collected directly from airlines. These data include frequent flyer tickets and those sold by consolidators. Taxes and fees are included in the Import Air Passenger Fares Index and excluded from the Export Air Passenger Fares Index. The Air Freight Indexes are calculated from data collected directly from airlines. These data exclude mail and passenger baggage. The scope of the service being priced is the movement of freight from airport to airport only, and does not include any ground transportation or port service. The Air Freight Indexes are presented using two definitions: Balance of Payments (which represent transactions between U.S. and foreign residents) and International (which represent transactions inbound to and outbound from the U.S.). Fact sheets specifying detailed information for each services industry are available at <http://www.bls.gov/mxp> under "MXP Publications."

Import Indexes by Locality of Origin -- Prices used in these indexes are a subset of the data collected for the Import Price Indexes. Beginning with January 2002, the indexes are defined by locality of origin using a nomenclature based upon the North American Industry Classification System (NAICS). Nonmanufactured goods are defined as NAICS 11 and 21 and manufactured goods are defined as NAICS 31-33.

Revision Policy -- To reflect the availability of late reports and corrections by respondents, monthly data may be revised in each of the three months after original publication. After three months, no further data revisions take place. So, for example, data released in the January release will be subject to revision in the releases for February, March, and April.

Uses of the Data -- The primary use of the indexes is to deflate trade statistics, notably the foreign trade sector of the National Income and Product Accounts constructed by the Department of Commerce. Other published indexes are useful for general market analysis. For trade in international services, Balance of Payments indexes are used for deflating National Income and Product Accounts, while International indexes are more appropriate for market analysis. Merchandise and services indexes also can be used to study U.S. competitiveness and to compute price elasticities, and the merchandise import indexes by country or region of origin are useful in terms of trade analysis.

E-Mail Subscription -- The U.S. Import and Export Price Indexes news release is available through an e-mail subscription service at (<http://www.bls.gov/bls/list.htm>).

Additional Information -- More detailed data are available on the Import/Export Price Indexes home page at (<http://www.bls.gov/mxp>). For technical assistance in using the BLS Internet site, send e-mail to (labstat.helpdesk@bls.gov). For Import/Export Price Index data requests, send e-mail to (mxpinfo@bls.gov).

Information from this release will be made available to sensory impaired individuals upon request. Voice phone: 202-691-5200; Federal Relay Service: 1-800-877-8339.