

Transmission of material in this release is embargoed until
8:30 a.m. (EDT) Thursday, September 12, 2013

USDL-13-1836

Technical information: (202) 691-7101 • MXPinfo@bls.gov • www.bls.gov/mxp
Media contact: (202) 691-5902 • PressOffice@bls.gov

U.S. IMPORT AND EXPORT PRICE INDEXES – AUGUST 2013

Prices for U.S. imports were unchanged in August, the U.S. Bureau of Labor Statistics reported today, after ticking up 0.1 percent in July. In August, higher fuel prices were offset by declining nonfuel prices. U.S. export prices fell 0.5 percent in August following a 0.1 percent decrease the previous month.

Chart 1. One-month percent change in the Import Price Index: August 2012 – August 2013

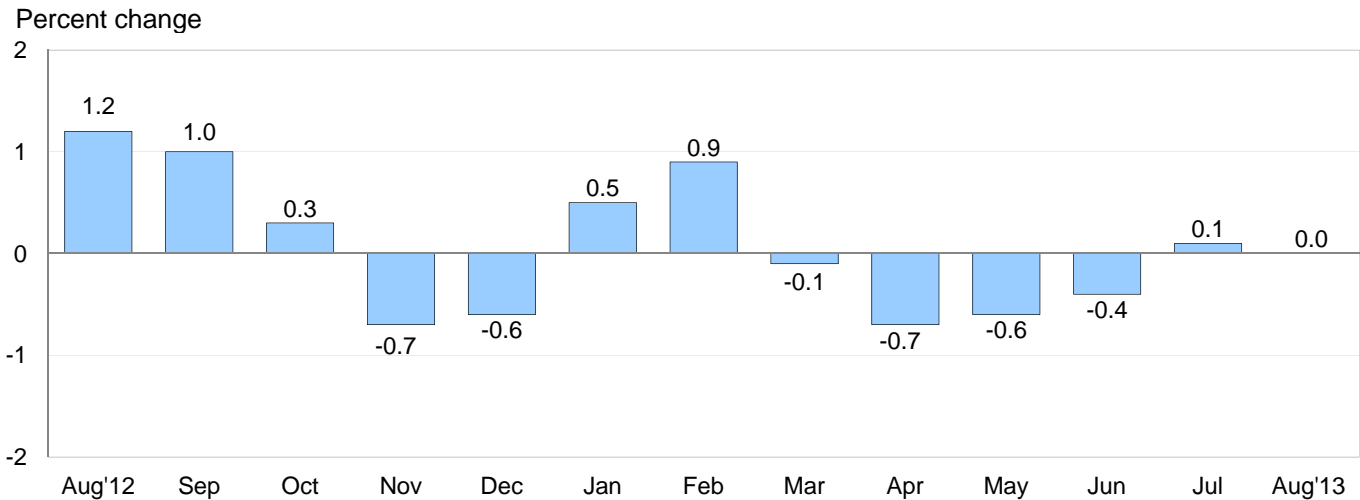
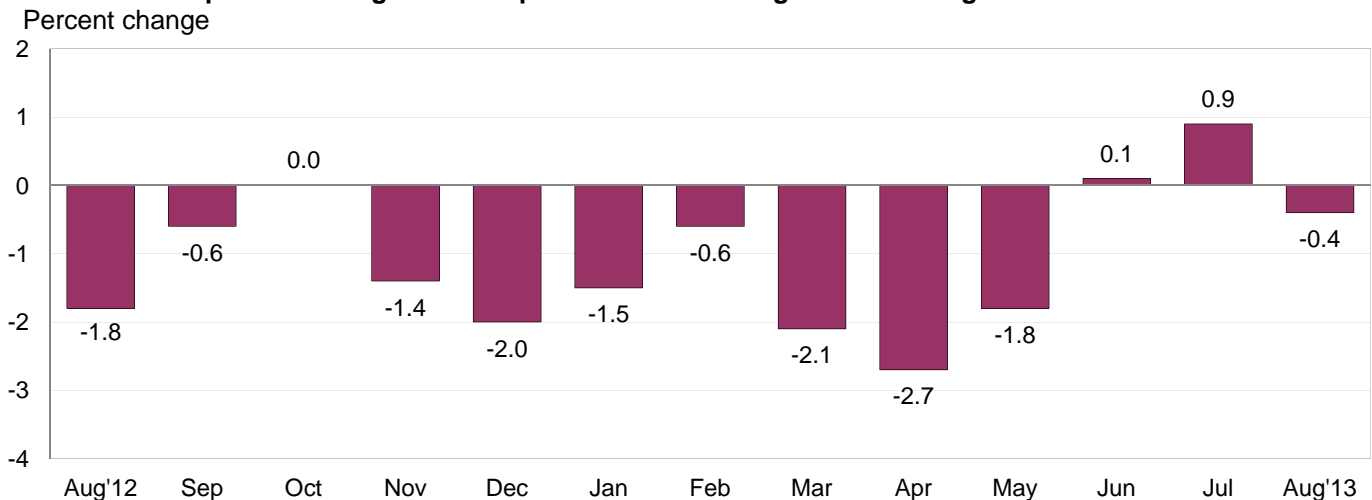


Chart 2. 12-month percent change in the Import Price Index: August 2012 – August 2013



All Imports: Import prices have recorded little change the past 2 months, after decreasing 1.8 percent over the prior 4 months. The recent decline contributed to a 0.4 percent drop in import prices for the year ended in August. The decrease from August 2012 to August 2013 was led by lower nonfuel prices, which more than offset higher fuel prices.

Fuel Imports: The price index for import fuel rose 0.5 percent in August, after advancing 1.8 percent in July. The increases for both months were led by rising petroleum prices, which advanced 0.8 percent in August and 2.7 percent in July. In contrast, natural gas prices fell 9.0 percent in August, after decreasing 22.2 percent the previous month. Overall fuel prices advanced 2.2 percent over the past 12 months, as the price indexes for both petroleum and natural gas rose from August 2012 to August 2013, advancing 1.9 percent and 13.8 percent, respectively.

All Imports Excluding Fuel: Prices for nonfuel imports continued to trend down in August, falling 0.2 percent. The August decrease followed a 0.4 percent drop in July, and was the sixth consecutive monthly decline. Falling prices for nonfuel industrial supplies and materials and finished goods drove the August drop in nonfuel import prices. The price index for nonfuel imports also decreased over the past year, declining 1.0 percent.

Table A. Import and export price indexes, selected categories
Percent changes

Month	IMPORTS			EXPORTS		
	All imports	Fuel imports	Nonfuel imports	All exports	Agricultural exports	Non-agricultural exports
2012						
August.....	1.2	6.1	-0.2	0.9	4.8	0.4
September.....	1.0	3.9	0.2	0.8	1.3	0.7
October.....	0.3	0.1	0.2	0.1	-1.7	0.3
November.....	-0.7	-2.2	-0.2	-0.6	0.5	-0.7
December.....	-0.6	-2.2	-0.1	-0.1	0.1	-0.2
2013						
January.....	0.5	1.9	0.2	0.4	-1.2	0.5
February.....	0.9	3.6	0.1	0.7	2.0	0.6
March.....	-0.1	0.0	-0.1	-0.5	-1.8	-0.3
April.....	-0.7	-2.4	-0.2	-0.6	-2.1	-0.5
May.....	-0.6	-1.7	-0.4	-0.5	1.1 ^r	-0.7
June.....	-0.4	-0.8	-0.3	-0.2 ^r	0.8	-0.2
July.....	0.1 ^r	1.8 ^r	-0.4	-0.1	-0.3	-0.2 ^r
August.....	0.0	0.5	-0.2	-0.5	-4.3	-0.1
Aug. 2011 to 2012.....	-1.8	-6.1	-0.4	-0.9	7.1	-1.9
Aug. 2012 to 2013.....	-0.4	2.2	-1.0	-1.1	-5.7	-0.6

r Revised

Chart 3. One-month percent change in the Export Price Index: August 2012 – August 2013

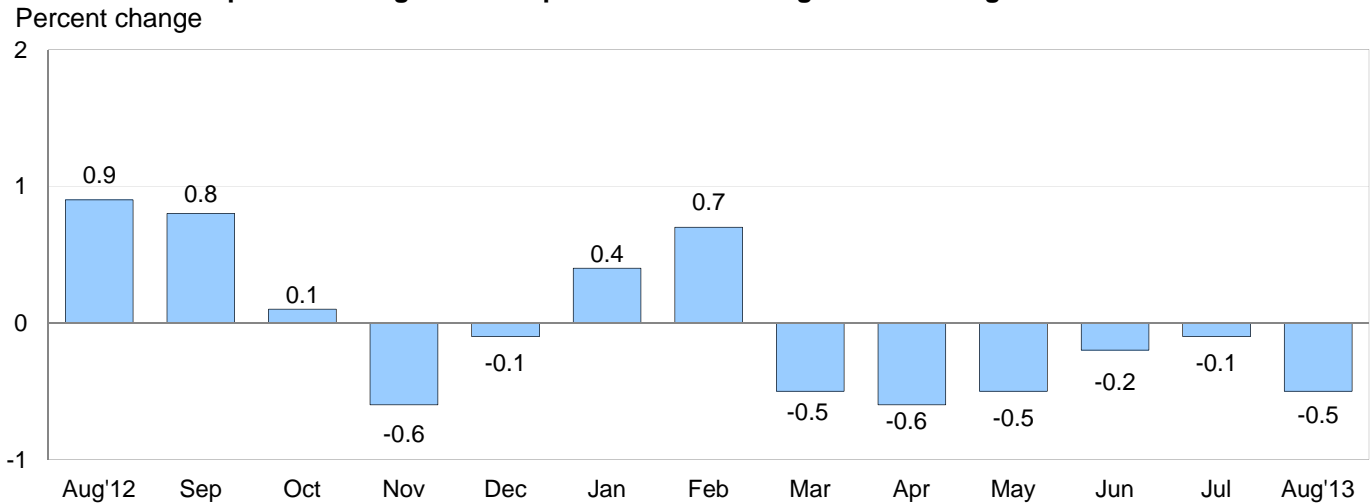
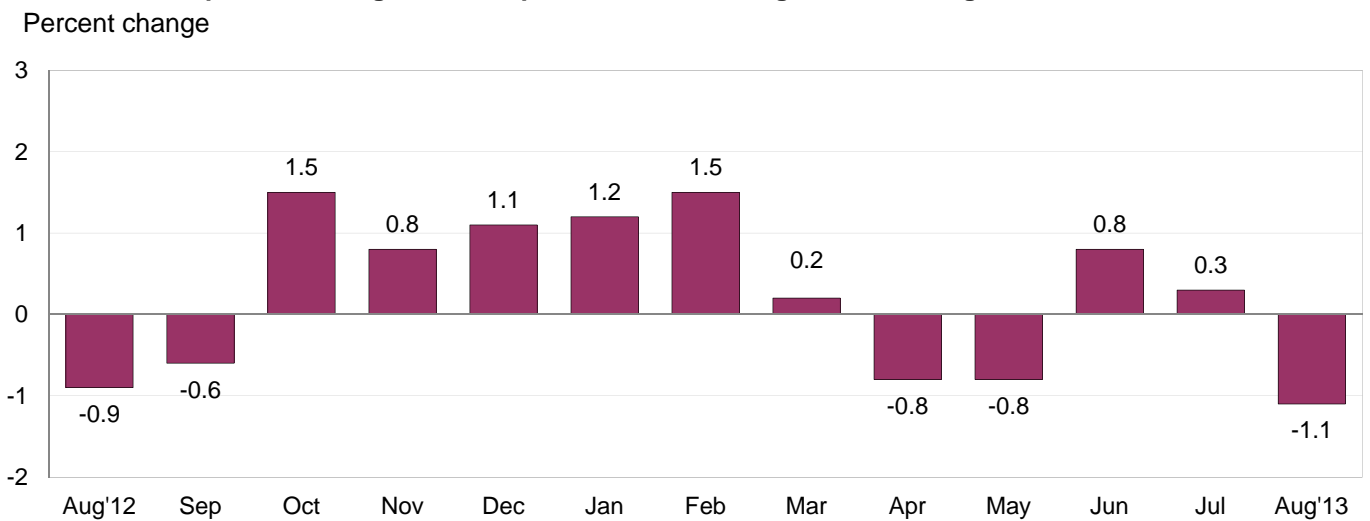


Chart 4. 12-month percent change in the Export Price Index: August 2012 – August 2013



All Exports: Prices for U.S. exports continued to trend down in August, decreasing 0.5 percent. The index for overall export prices has not recorded a monthly advance since a 0.7 percent increase in February. Lower prices for both agricultural and nonagricultural exports contributed to the August decline. Overall export prices fell 1.1 percent for the year ended in August, the largest 12-month drop since the index decreased 1.3 percent between July 2011 and July 2012.

Agricultural Exports: The price index for agricultural exports declined 4.3 percent in August, the largest monthly decrease since the index fell 6.5 percent in October 2011. A 15.9 percent decrease in soybean prices and a 14.5 percent drop in corn prices drove the August decline in agricultural prices. Prices for agricultural exports fell 5.7 percent over the past 12 months, the first year-over-year decline in export agricultural prices since the index fell 5.8 percent for the year ended in June 2012. Lower soybean and corn prices also were the primary contributors to the decline in agricultural prices over the past year.

All Exports Excluding Agriculture: Nonagricultural export prices edged down 0.1 percent in August following a 0.2 percent decline for the previous month. Falling finished goods prices more than offset an increase in the price index for nonagricultural industrial supplies and materials. The price index for nonagricultural exports decreased 0.6 percent over the past 12 months, led by lower prices for nonagricultural industrial supplies and materials and consumer goods.

SELECTED AUGUST HIGHLIGHTS

Import Prices

Imports by Locality of Origin: Import prices from Japan edged down 0.1 percent in August, after declining 0.5 percent in July. Prices for imports from Japan decreased 2.6 percent over the past 12 months, paralleling the decline in the value of the yen relative to the U.S. dollar. The 12-month decrease for August was the largest year-over-year drop in the index since a 2.9 percent decline for the year ended in November 2002. Prices for imports from the European Union also fell 0.1 percent in August. The price index for imports from China recorded no change for the third consecutive month in August. Import prices from China have not increased on a monthly basis since a 0.1 percent advance in February 2012, and fell 1.3 percent over the past year. Prices for imports from Canada also were unchanged in August, following a 0.1 percent decline the previous month. In contrast, import prices from Mexico rose 0.3 percent in August.

Nonfuel Industrial Supplies and Materials: Nonfuel industrial supplies and materials prices fell 0.8 percent in August following a 1.7 percent decline the previous month. Decreasing metals prices were the largest contributor to the drop in both August and July.

Finished Goods: Prices for each of the major finished goods categories edged down 0.1 percent in August. Capital goods prices have not recorded a monthly increase since the index rose 0.2 percent in September 2012, and fell 0.8 percent over the past year. Prices for automotive vehicles also continued a downward trend over the past 5 months as the index decreased 1.4 percent between February and August. The 0.1 percent decline in consumer goods prices in August followed a 0.2 percent decrease in July.

Foods, Feeds, and Beverages: Prices for foods, feeds, and beverages rose 0.3 percent in August, after a 0.6 percent advance the previous month. The increase was led by a 2.8 percent rise in fish and shellfish prices, which more than offset a 4.4 percent decline in vegetable prices.

Transportation Services: Import air passenger fares declined for the second consecutive month, falling 7.9 percent in August following a 3.9 percent drop in July. The decreases for both months were driven by lower European and Asian fares. The index for import air passenger fares fell 0.5 percent over the past year. Import air freight prices fell 0.3 percent in August and 0.8 percent over the past 12 months.

Export Prices

Nonagricultural Industrial Supplies and Materials: Nonagricultural industrial supplies and materials prices rose 0.2 percent in August, after declining 0.6 percent in July as higher fuel prices more than offset lower metals prices.

Finished Goods: Prices for each of the major finished goods areas decreased in August. Consumer goods prices fell 0.6 percent, the largest monthly drop since a similar decline in July 2012. The price indexes for capital goods and automotive vehicles each edged down 0.1 percent.

Transportation Services: Export air passenger fares increased 2.6 percent for the second consecutive month in August. The August increase was driven by a 24.7 percent advance in Asian fares. Despite the recent increases, export air passenger fares fell 4.9 percent for the year ended in August. Export air freight prices were unchanged in August and up 2.1 percent over the past year.

Import and Export Price Index data for September 2013 are scheduled for release on Thursday, October 10, 2013 at 8:30 a.m. (EDT).

Table 1. U.S. import price indexes and percent changes for selected categories of goods: August 2012 to August 2013

[2000=100, unless otherwise noted]

Description	End Use	Relative importance July 2013 ¹	Index		Percent change				
			July 2013	Aug. 2013	Annual	Monthly			
					Aug. 2012 to Aug. 2013	Apr. 2013 to May 2013	May 2013 to June 2013	June 2013 to July 2013	July 2013 to Aug. 2013
All commodities.....		100.000	138.9	138.9	-0.4	-0.6	-0.4	0.1	0.0
All imports excluding food and fuels (Dec. 2010=100).....		73.677	102.1	101.9	-1.3	-0.4	-0.3	-0.4	-0.2
All imports excluding petroleum.....		79.633	115.0	114.8	-0.9	-0.3	-0.3	-0.6	-0.2
All imports excluding fuels (Dec. 2001=100)..		78.760	119.1	118.9	-1.0	-0.4	-0.3	-0.4	-0.2
Foods, feeds, & beverages.....	0	5.083	173.3	173.9	2.8	0.5	-1.0	0.6	0.3
Agricultural foods, feeds & beverages, excluding distilled beverages.....	00	3.875	191.0	190.7	0.0	0.2	-1.5	0.5	-0.2
Nonagricultural foods (fish, distilled beverages).....	01	1.208	133.2	135.9	12.8	1.5	0.6	0.8	2.0
Industrial supplies & materials.....	1	34.278	248.2	248.3	-0.5	-1.6	-0.8	0.4	0.0
Industrial supplies & materials excluding petroleum.....		13.910	158.7	157.0	-3.7	-1.1	-1.0	-2.9	-1.1
Industrial supplies & materials excluding fuels (Dec. 2001=100).....		13.037	179.8	178.4	-4.6	-1.3	-0.9	-1.7	-0.8
Industrial supplies & materials, durable.....		7.649	167.1	166.0	-4.6	-2.2	-1.3	-1.8	-0.7
Industrial supplies & materials nondurable excluding petroleum.....		5.388	148.4	146.0	-2.7	0.1	-0.6	-4.1	-1.6
Fuels & lubricants.....	10	21.241	335.7	337.5	2.2	-1.7	-0.8	1.8	0.5
Petroleum & petroleum products.....	100	20.368	374.8	377.7	1.9	-1.8	-0.7	2.7	0.8
Crude.....	10000	15.749	392.2	393.5	3.6	-1.0	-0.7	3.6	0.3
Fuels, n.e.s.-coals & gas.....	101	0.666	110.0	102.0	11.5	0.7	-2.4	-19.7	-7.3
Gas-natural.....	10110	0.548	96.9	88.2	13.8	1.3	-2.8	-22.2	-9.0
Paper & paper base stocks.....	11	0.566	113.5	113.6	0.4	0.5	-0.1	0.3	0.1
Materials associated with nondurable supplies & materials.....	12	4.902	170.1	168.4	-5.0	-0.1	-0.5	-1.8	-1.0
Selected building materials.....	13	1.003	141.0	139.8	0.1	-1.7	-3.2	-1.8	-0.9
Unfinished metals related to durable goods.....	14	3.465	237.2	234.8	-8.0	-3.9	-1.8	-2.7	-1.0
Finished metals related to durable goods. . .	15	1.562	155.6	155.6	-3.7	-0.4	-0.3	-1.8	0.0
Nonmetals related to durable goods.....	16	1.539	113.8	113.3	-0.9	-0.4	-0.2	0.2	-0.4
Capital goods.....	2	24.133	92.6	92.5	-0.8	-0.1	-0.1	0.0	-0.1
Electric generating equipment.....	20	3.014	119.3	119.5	0.2	-0.2	0.0	-0.2	0.2
Nonelectrical machinery.....	21	19.247	85.4	85.2	-1.0	-0.1	-0.1	0.1	-0.2
Transportation equipment excluding motor vehicles (Dec. 2001=100).....	22	1.873	135.8	135.7	1.2	-0.1	-0.1	0.1	-0.1
Automotive vehicles, parts & engines.....	3	12.178	113.5	113.4	-1.0	-0.3	-0.2	-0.4	-0.1
Consumer goods, excluding automotives..	4	24.329	107.4	107.3	0.0	-0.4	0.0	-0.2	-0.1
Nondurables, manufactured.....	40	11.883	116.0	116.0	1.0	-0.6	0.1	0.0	0.0
Durables, manufactured.....	41	11.118	98.4	98.4	-1.1	-0.1	-0.2	-0.5	0.0
Nonmanufactured consumer goods.....	42	1.328	116.4	116.4	0.9	0.3	-0.4	0.0	0.0

¹ Relative importance figures are based on 2011 trade values.

NOTES: Data may be revised in each of the three months after original publication.

Dash = Not available

Table 2. U.S. export price indexes and percent changes for selected categories of goods: August 2012 to August 2013

[2000=100, unless otherwise noted]

Description	End Use	Relative importance July 2013 ¹	Index		Percent change				
			July 2013	Aug. 2013	Annual	Monthly			
					Aug. 2012 to Aug. 2013	Apr. 2013 to May 2013	May 2013 to June 2013	June 2013 to July 2013	July 2013 to Aug. 2013
All commodities		100.000	132.6	131.9	-1.1	-0.5	-0.2	-0.1	-0.5
Agricultural commodities		10.603	223.5	214.0	-5.7	1.1	0.8	-0.3	-4.3
All exports excluding food and fuels (Dec. 2010=100)		81.004	102.0	101.7	-0.5	-0.5	-0.2	-0.3	-0.3
Nonagricultural commodities		89.397	126.0	125.9	-0.6	-0.7	-0.2	-0.2	-0.1
Foods, feeds, & beverages	0	9.814	222.9	213.3	-6.9	0.8	0.9	-0.4	-4.3
Agricultural foods, feeds & beverages, excluding distilled beverages.....	00	9.160	227.6	216.9	-7.0	1.2	1.0	-0.5	-4.7
Nonagricultural foods (fish, distilled beverages).....	01	0.654	179.6	181.9	-6.0	-4.5	-2.0	0.7	1.3
Industrial supplies & materials	1	33.625	176.5	176.7	-1.9	-1.5	-0.6	-0.6	0.1
Industrial supplies & materials, durable.....		11.569	171.5	170.1	-6.3	-2.5	-1.1	-2.3	-0.8
Industrial supplies & materials, nondurable.....		22.057	180.1	181.1	0.4	-1.0	-0.3	0.4	0.6
Agricultural industrial supplies & materials...	10	1.443	205.9	203.4	3.1	0.4	-0.9	1.0	-1.2
Nonagricultural industrial supplies & materials		32.182	175.6	175.9	-2.2	-1.6	-0.6	-0.6	0.2
Fuels & lubricants.....	11	9.182	253.0	258.0	-1.3	-2.3	-0.2	0.9	2.0
Nonagricultural supplies & materials excluding fuels & building materials.....	12	21.960	165.9	164.8	-3.0	-1.5	-0.7	-1.3	-0.7
Selected building materials.....	13	1.040	123.3	123.4	4.0	0.2	0.2	0.7	0.1
Capital goods	2	35.597	106.6	106.5	0.9	-0.1	0.1	0.1	-0.1
Electrical generating equipment.....	20	3.524	115.4	115.8	1.9	0.0	-0.3	0.8	0.3
Nonelectrical machinery.....	21	25.865	95.5	95.4	0.7	-0.1	0.1	0.1	-0.1
Transportation equipment excluding motor vehicles (Dec. 2001=100).....	22	6.207	151.7	151.7	1.7	0.0	0.0	0.1	0.0
Automotive vehicles, parts & engines	3	8.983	113.5	113.4	0.5	-0.1	0.0	0.1	-0.1
Consumer goods, excluding automotives ..	4	11.981	115.3	114.6	-1.5	-0.2	0.0	0.0	-0.6
Nondurables, manufactured.....	40	5.509	115.3	114.6	-0.3	0.3	0.2	0.3	-0.6
Durables, manufactured.....	41	5.088	111.5	111.2	-2.9	-0.6	-0.1	0.0	-0.3

¹ Relative importance figures are based on 2011 trade values.

NOTES: Data may be revised in each of the three months after original publication.

Dash = Not available

Table 3. U.S. import price indexes and percent changes for selected categories of goods: August 2012 to August 2013

[December 2005=100, unless otherwise noted]

Description	NAICS	Relative importance July 2013 ¹	Index		Percent change				
			July 2013	Aug. 2013	Annual	Monthly			
					Aug. 2012 to Aug. 2013	Apr. 2013 to May 2013	May 2013 to June 2013	June 2013 to July 2013	July 2013 to Aug. 2013
Nonmanufactured articles.....		18.696	167.5	167.7	4.2	-0.7	-1.0	1.8	0.1
Agriculture, forestry, fishing and hunting...	11	1.826	171.9	171.6	2.1	1.2	-1.6	-0.6	-0.2
Crop production.....	111	1.282	176.9	176.4	0.7	2.0	-2.2	0.0	-0.3
Forestry and logging (Dec. 2012=100).....	113	0.192	98.3	94.0	-	2.0	-0.1	-6.6	-4.4
Mining.....	21	16.870	166.7	167.0	4.4	-1.0	-0.9	2.1	0.2
Mining (except oil and gas) (Dec. 2006=100).....	212	0.316	130.2	130.0	-9.3	0.2	-1.1	-1.6	-0.2
Manufactured articles.....		80.849	115.9	115.8	-1.4	-0.6	-0.3	-0.3	-0.1
Manufactured goods, part 1.....	31	10.573	123.7	123.6	-0.6	0.2	-0.1	0.0	-0.1
Food manufacturing.....	311	2.900	155.6	155.6	-1.2	0.9	-0.4	0.5	0.0
Beverage and tobacco product manufacturing.....	312	0.880	113.6	113.4	1.9	0.2	-0.3	0.4	-0.2
Textile mills (Dec. 2011=100).....	313	0.388	100.7	100.7	-1.2	-0.2	-0.3	-0.6	0.0
Textile product mills.....	314	0.787	114.7	114.6	-1.0	0.1	0.1	-0.8	-0.1
Apparel manufacturing.....	315	3.947	110.2	110.1	-1.3	-0.3	0.2	-0.2	-0.1
Leather and allied product manufacturing. . .	316	1.670	121.6	121.7	0.8	-0.1	0.3	-0.2	0.1
Manufactured goods, part 2.....	32	17.789	135.9	136.3	-1.7	-1.7	-0.3	-0.3	0.3
Wood product manufacturing.....	321	0.593	119.9	118.8	0.1	-2.9	-4.9	-2.5	-0.9
Paper manufacturing.....	322	1.042	110.8	110.8	0.1	0.4	-0.1	0.4	0.0
Petroleum and coal products manufacturing.....	324	4.126	158.1	162.0	-5.1	-4.5	-0.2	0.6	2.5
Chemical manufacturing.....	325	9.166	134.4	133.7	-0.3	-1.0	-0.2	-0.6	-0.5
Plastics and rubber products manufacturing.....	326	1.940	125.4	125.2	-1.7	-0.2	-0.4	0.0	-0.2
Nonmetallic mineral product manufacturing.....	327	0.838	129.0	129.2	-0.6	0.1	0.1	-0.2	0.2
Manufactured goods, part 3.....	33	52.487	108.1	107.9	-1.4	-0.4	-0.3	-0.4	-0.2
Primary metal manufacturing.....	331	4.050	155.8	154.2	-8.6	-3.4	-1.8	-2.7	-1.0
Fabricated metal product manufacturing. . .	332	2.644	126.9	126.9	-2.1	-0.6	-0.2	-0.9	0.0
Machinery manufacturing.....	333	6.638	121.3	121.0	0.0	0.2	-0.1	0.1	-0.2
Computer and electronic product manufacturing.....	334	16.068	80.9	80.8	-1.7	-0.1	0.0	-0.1	-0.1
Electrical equipment, appliance, and component manufacturing.....	335	4.029	119.3	119.3	0.6	-0.2	0.0	-0.1	0.0
Transportation equipment manufacturing. . .	336	12.945	111.5	111.4	-0.4	-0.2	-0.2	-0.4	-0.1
Furniture and related product manufacturing.....	337	1.258	114.1	113.8	0.3	0.0	-0.2	-0.1	-0.3
Miscellaneous manufacturing.....	339	4.856	120.7	120.8	-0.2	-0.1	-0.1	-0.1	0.1

¹ Relative importance figures are based on 2011 trade values.

NOTES: Data may be revised in each of the three months after original publication.

Dash = Not available

Table 4. U.S. export price indexes and percent changes for selected categories of goods: August 2012 to August 2013

[December 2005=100, unless otherwise noted]

Description	NAICS	Relative importance July 2013 ¹	Index		Percent change				
			July 2013	Aug. 2013	Annual	Monthly			
					Aug. 2012 to Aug. 2013	Apr. 2013 to May 2013	May 2013 to June 2013	June 2013 to July 2013	July 2013 to Aug. 2013
Nonmanufactured articles.....		7.811	168.7	157.7	-12.1	1.7	-0.1	-1.9	-6.5
Agriculture, forestry, fishing and hunting...	11	5.807	211.1	195.0	-12.3	1.9	0.7	-0.7	-7.6
Crop production.....	111	5.378	220.1	202.3	-12.3	2.7	1.2	-1.0	-8.1
Mining.....	21	2.004	87.9	84.9	-11.7	1.1	-2.0	-5.2	-3.4
Mining (except oil and gas).....	212	1.391	103.0	100.3	-15.9	-0.1	-0.8	-2.4	-2.6
Manufactured articles.....		89.842	120.3	120.3	-0.1	-0.6	-0.1	0.0	0.0
Manufactured goods, part 1.....	31	7.082	152.0	151.6	1.9	-0.5	0.5	0.3	-0.3
Food manufacturing.....	311	4.973	174.1	173.9	2.2	-0.9	0.6	0.3	-0.1
Beverage and tobacco product manufacturing.....	312	0.572	127.0	124.8	-0.6	-0.2	0.1	-0.2	-1.7
Manufactured goods, part 2.....	32	26.519	133.0	133.7	0.5	-0.8	-0.1	0.5	0.5
Wood product manufacturing.....	321	0.429	119.5	118.3	3.6	0.3	0.3	1.4	-1.0
Paper manufacturing.....	322	1.835	122.0	121.6	1.6	0.4	0.4	-0.1	-0.3
Petroleum and coal products manufacturing.....	324	6.976	163.7	168.3	0.2	-3.0	0.3	2.6	2.8
Chemical manufacturing.....	325	14.256	130.4	130.0	-0.2	-0.2	-0.4	-0.3	-0.3
Plastics and rubber products manufacturing.....	326	2.235	119.9	119.8	2.1	0.3	-0.4	-0.6	-0.1
Nonmetallic mineral product manufacturing.....	327	0.787	111.0	111.0	-0.6	-0.2	0.0	0.0	0.0
Manufactured goods, part 3.....	33	56.242	112.3	112.1	-0.5	-0.5	-0.2	-0.2	-0.2
Primary metal manufacturing.....	331	4.645	150.0	147.4	-11.2	-4.2	-2.3	-3.4	-1.7
Fabricated metal product manufacturing. . .	332	2.753	130.7	130.9	-0.5	-0.5	-0.1	-0.6	0.2
Machinery manufacturing.....	333	11.729	122.5	122.5	1.4	0.1	0.0	0.3	0.0
Computer and electronic product manufacturing.....	334	14.249	88.7	88.4	-0.9	-0.2	0.1	0.0	-0.3
Electrical equipment, appliance, and component manufacturing.....	335	3.344	114.5	114.9	2.4	0.1	-0.2	0.5	0.3
Transportation equipment manufacturing. . .	336	14.230	118.0	118.0	1.1	0.0	0.0	0.1	0.0
Furniture and related product manufacturing (Dec. 2011=100).....	337	0.323	107.8	107.9	4.8	-0.4	0.2	2.1	0.1
Miscellaneous manufacturing.....	339	4.969	121.7	121.1	-0.5	-0.6	0.2	-0.1	-0.5

1 Relative importance figures are based on 2011 trade values.

NOTES: Data may be revised in each of the three months after original publication.

Dash = Not available

Table 5. U.S. import price indexes and percent changes for selected categories of goods: August 2012 to August 2013

[2000=100, unless otherwise noted]

Description	Harmonized system	Relative importance July 2013 ¹	Index		Percent change				
			July 2013	Aug. 2013	Annual	Monthly			
					Aug. 2012 to Aug. 2013	Apr. 2013 to May 2013	May 2013 to June 2013	June 2013 to July 2013	July 2013 to Aug. 2013
Live animals; animal products.....	I	1.173	181.3	185.5	15.1	0.9	1.6	0.8	2.3
Meat and edible meat offal.....	02	0.257	222.3	226.1	3.5	0.0	0.0	1.2	1.7
Fish and crustaceans, molluscs and other aquatic invertebrates.....	03	0.660	135.9	139.8	22.6	2.4	2.7	0.3	2.9
Vegetable products.....	II	1.582	201.9	199.9	-5.9	1.4	-4.1	-1.1	-1.0
Edible vegetables, roots, and tubers.....	07	0.366	353.3	353.6	19.1	6.8	-1.6	1.7	0.1
Edible fruit and nuts; peel of citrus fruit or melons.....	08	0.415	111.3	112.8	-2.9	-2.2	-10.0	0.8	1.3
Coffee, tea, mate and spices.....	09	0.359	230.9	229.5	-15.1	0.1	-1.9	-2.0	-0.6
Animal or vegetable fats and oils (Dec. 2009=100).....	III	0.250	116.1	115.1	-8.4	-0.9	-0.3	-0.3	-0.9
Prepared foodstuffs, beverages, and tobacco.....	IV	2.418	157.6	158.4	0.9	0.4	-0.8	0.8	0.5
Sugars and sugar confectionary (Dec. 2012=100).....	17	0.201	94.4	90.7	-	-2.0	-3.9	2.8	-3.9
Cocoa and cocoa preparations (Dec. 2009=100).....	18	0.206	91.2	100.0	19.6	2.5	2.7	1.2	9.6
Preparations of cereals, flour, starch or milk; bakers' wares (Dec. 2007=100).....	19	0.239	130.0	129.9	1.4	-0.3	-0.6	-0.5	-0.1
Preparations of vegetables, fruit, nuts, or other parts of plants.....	20	0.319	166.0	164.8	-2.9	2.1	0.2	0.5	-0.7
Beverages, spirits, and vinegar.....	22	0.869	124.3	124.2	2.2	0.4	-0.4	0.2	-0.1
Mineral products.....	V	21.211	338.5	340.2	2.3	-1.6	-0.7	1.9	0.5
Mineral fuels, oils and residuals, bituminous substances and mineral waxes.....	27	20.929	335.3	337.0	2.5	-1.7	-0.8	1.9	0.5
Products of the chemical or allied industries.....	VI	8.582	148.8	148.2	-1.3	-1.1	-0.3	-0.8	-0.4
Inorganic chemicals.....	28	0.756	333.3	322.5	-18.3	-1.6	-1.5	-3.9	-3.2
Organic chemicals.....	29	2.608	134.5	134.6	-3.0	-1.0	-0.1	-0.5	0.1
Pharmaceutical products.....	30	3.433	125.5	125.5	7.4	-1.1	0.0	0.4	0.0
Fertilizers (Dec. 2009=100).....	31	0.370	116.3	110.7	-18.8	-1.9	0.1	-7.8	-4.8
Tanning extracts; dye, pigments, varnish, paints & putty (Dec. 2011=100).....	32	0.165	94.1	93.9	-9.3	0.1	-0.1	0.3	-0.2
Miscellaneous chemical products.....	38	0.470	98.5	98.6	-3.1	-0.6	-1.2	-1.3	0.1
Plastics and articles thereof; rubber and articles thereof.....	VII	3.200	150.9	150.4	-0.5	-0.3	-0.2	-0.8	-0.3
Plastics and articles thereof.....	39	1.974	147.8	148.0	3.9	-0.5	0.1	-0.1	0.1
Rubber and articles thereof.....	40	1.226	157.7	156.0	-7.1	-0.1	-0.7	-1.9	-1.1
Raw hides, skins, leather, furskins, travel goods, etc.....	VIII	0.599	125.5	125.5	-0.6	-0.5	-0.4	0.1	0.0
Articles of leather; travel goods, bags, etc. of various materials.....	42	0.567	126.9	126.9	-0.1	0.0	-0.5	0.0	0.0
Wood, wood charcoal, cork, straw, basketware and wickerwork.....	IX	0.630	146.2	143.8	0.0	-2.7	-4.9	-2.9	-1.6
Woodpulp, recovered paper, and paper products.....	X	1.142	114.0	113.9	0.2	0.2	0.1	0.4	-0.1
Pulp wood, waste paper, and paperboard (Dec. 2011=100).....	47	0.181	104.0	103.3	1.4	2.3	-0.3	-0.4	-0.7
Paper and paperboard; articles of paper pulp, paper or paperboard.....	48	0.759	107.7	107.9	-0.2	-0.2	0.1	0.7	0.2
Textile and textile articles.....	XI	4.970	113.7	113.6	-1.1	-0.1	0.1	-0.3	-0.1
Articles of apparel and clothing accessories, knitted or crocheted.....	61	1.944	103.0	102.9	-2.6	-0.6	0.1	-0.4	-0.1

See footnotes at end of table.

Table 5. U.S. import price indexes and percent changes for selected categories of goods: August 2012 to August 2013 — Continued
 [2000=100, unless otherwise noted]

Description	Harmonized system	Relative importance July 2013 ¹	Index		Percent change				
			July 2013	Aug. 2013	Annual	Monthly			
					Aug. 2012 to Aug. 2013	Apr. 2013 to May 2013	May 2013 to June 2013	June 2013 to July 2013	July 2013 to Aug. 2013
Articles of apparel and clothing accessories, not knitted or crocheted.....	62	1.841	117.7	117.9	0.4	0.2	0.3	0.0	0.2
Made-up or worn textile articles.....	63	0.551	107.9	107.8	-0.6	0.1	0.2	-0.6	-0.1
Headgear, umbrellas, artificial flowers, etc. . .	XII	1.369	120.9	121.1	0.7	-0.2	0.2	-0.3	0.2
Footwear and parts of such articles.....	64	1.173	120.1	120.2	0.5	-0.2	0.2	-0.3	0.1
Stone, plaster, cement, asbestos, ceramics, glass etc.....	XIII	0.771	132.0	132.1	0.1	0.1	0.1	-0.1	0.1
Articles of stone, plaster, cement, asbestos, or mica (Dec. 2001=100).....	68	0.249	125.7	126.4	0.8	0.3	0.2	-0.1	0.6
Ceramic products.....	69	0.243	141.1	140.9	-0.8	0.0	0.1	0.4	-0.1
Glass and glassware.....	70	0.279	127.2	127.3	0.3	-0.1	0.1	-0.6	0.1
Pearls, stones, precious metals, imitation jewelry, and coins.....	XIV	2.990	180.0	179.5	-8.2	-3.9	-2.5	-3.3	-0.3
Base metals and articles of base metals.....	XV	4.945	179.5	179.0	-3.3	-0.9	-0.1	-1.0	-0.3
Iron and steel.....	72	1.140	215.4	216.4	-6.4	-0.9	-0.6	-0.2	0.5
Articles of iron or steel.....	73	1.488	154.6	154.0	-4.1	-0.1	-0.4	-0.8	-0.4
Copper and articles thereof.....	74	0.447	322.2	320.5	-5.6	-2.9	2.3	-5.2	-0.5
Nickel and articles thereof (Dec. 2009=100)...	75	0.130	87.7	85.5	-12.2	-4.4	-4.5	-4.0	-2.5
Aluminum and articles thereof.....	76	0.672	136.2	135.2	0.9	-1.4	0.8	-1.0	-0.7
Tools, implements, cutlery, spoons and forks, of base metal; parts thereof.....	82	0.388	129.2	129.2	0.8	0.1	0.1	-0.2	0.0
Miscellaneous articles of base metal.....	83	0.432	135.3	135.4	-0.4	0.0	-0.2	-0.3	0.1
Machinery, electrical equipment, TV image and sound recorders, parts, etc.....	XVI	26.532	84.9	84.8	-1.1	-0.1	-0.1	-0.1	-0.1
Machinery and mechanical appliances; parts thereof.....	84	13.764	89.8	89.6	-0.1	0.0	0.0	0.1	-0.2
Electrical machinery and equip, sound and TV recorders & reproducers, parts.....	85	12.768	80.3	80.2	-2.0	-0.2	-0.1	-0.4	-0.1
Vehicles, aircraft, vessels and associated transport equipment.....	XVII	10.731	115.8	115.8	-0.3	0.0	-0.2	-0.3	0.0
Motor vehicles and their parts.....	87	9.786	114.5	114.5	-0.5	0.0	-0.2	-0.4	0.0
Aircraft, spacecraft, and parts thereof (Dec. 2002=100).....	88	0.875	120.1	120.1	1.1	-0.1	0.0	0.1	0.0
Optical, photo, measuring, medical & musical instruments; & timepieces.....	XVIII	3.365	104.0	103.9	0.0	0.0	-0.1	0.3	-0.1
Optical, photographic, measuring and medical instruments.....	90	3.052	100.8	100.8	-0.6	0.0	-0.1	0.2	0.0
Clocks and watches and parts thereof.....	91	0.254	141.3	141.0	8.5	-0.1	-0.6	1.0	-0.2
Miscellaneous manufactured articles.....	XX	3.480	113.0	112.8	0.2	0.0	-0.1	0.0	-0.2
Furniture & stuffed furnishings; lamps & lighting fittings, nesoi; prefab bldgs.....	94	1.943	116.8	116.5	0.1	0.0	-0.3	0.0	-0.3
Toys, games and sports equipment; parts and accessories thereof.....	95	1.341	105.2	105.1	0.1	-0.1	0.1	0.0	-0.1
Miscellaneous manufactured articles.....	96	0.195	138.5	139.0	1.6	-0.1	0.0	0.1	0.4

¹ Relative importance figures are based on 2011 trade values.

NOTES: Data may be revised in each of the three months after original publication.

Dash = Not available

Table 6. U.S. export price indexes and percent changes for selected categories of goods: August 2012 to August 2013

[2000=100, unless otherwise noted]

Description	Harmoni- zied system	Relative importance July 2013 ¹	Index		Percent change				
			July 2013	Aug. 2013	Annual	Monthly			
					Aug. 2012 to Aug. 2013	Apr. 2013 to May 2013	May 2013 to June 2013	June 2013 to July 2013	July 2013 to Aug. 2013
Live animals; animal products.....	I	2.075	217.8	216.2	2.3	-2.5	0.4	1.3	-0.7
Meat & edible meat offal (Dec. 2006=100). . .	02	1.194	168.8	166.2	0.5	-1.7	0.8	0.9	-1.5
Fish and crustaceans, molluscs and other aquatic invertebrates.....	03	0.372	185.5	188.9	-10.4	-6.9	-2.9	1.1	1.8
Vegetable products.....	II	5.356	267.9	246.6	-12.7	2.6	1.4	-1.4	-8.0
Edible fruit and nuts; peel of citrus fruit or melons.....	08	0.991	154.2	160.2	20.0	4.8	-1.3	-0.5	3.9
Cereals.....	10	2.001	292.5	268.9	-20.8	2.7	0.5	-4.7	-8.1
Oilseeds and misc. grains, seeds, fruits, plants, straw and fodder.....	12	1.801	305.0	264.0	-17.9	2.4	4.4	1.8	-13.4
Animal or vegetable fats and oils (Dec. 2009=100).....	III	0.301	131.3	126.6	-12.5	-0.7	-3.1	-0.8	-3.6
Prepared foodstuffs, beverages, and tobacco.....	IV	3.022	167.1	167.0	1.8	-0.5	0.7	0.0	-0.1
Preparations of vegetables, fruit, nuts or other parts of plants (Dec. 2009=100).....	20	0.333	112.6	112.7	0.4	-0.2	0.0	-0.4	0.1
Beverages, spirits, and vinegar (Dec. 2008=100).....	22	0.609	112.8	112.6	2.6	-0.2	-0.2	-0.1	-0.2
Residues and waste from the food industries; prepared animal feed.....	23	0.768	274.4	271.5	1.2	-3.0	3.2	2.5	-1.1
Mineral products.....	V	9.094	295.2	300.2	-2.5	-2.0	-0.1	0.8	1.7
Ores, slag and ash (Dec. 2012=100).....	26	0.444	90.8	87.1	-	-2.6	-0.7	-2.3	-4.1
Mineral fuels, oils and residuals, bituminous substances and mineral waxes.....	27	8.468	292.7	298.6	-1.9	-2.1	0.0	1.0	2.0
Products of the chemical or allied industries.....	VI	11.473	153.1	152.7	-0.9	0.1	-0.5	-0.5	-0.3
Inorganic chemicals.....	28	1.029	185.0	180.8	-2.1	1.1	-1.5	-0.3	-2.3
Organic chemicals.....	29	3.194	162.3	164.0	-0.2	-1.3	-0.8	-0.6	1.0
Pharmaceutical products.....	30	2.685	122.6	121.9	-1.8	0.2	-0.2	0.1	-0.6
Fertilizers (Dec. 2012=100).....	31	0.374	94.3	91.1	-	-1.9	-1.1	-0.9	-3.4
Essential oils and resinoids; perfumery cosmetic or toilet preparations.....	33	0.725	138.4	135.7	-1.0	-0.1	0.0	-0.1	-2.0
Soap; lubricants; waxes, polishing or scouring products; candles, pastes.....	34	0.455	120.9	120.8	-1.8	-0.3	0.1	1.2	-0.1
Miscellaneous chemical products.....	38	1.765	154.0	153.8	0.3	2.4	0.1	-1.6	-0.1
Plastics and articles thereof; rubber and articles thereof.....	VII	5.284	149.1	148.2	1.0	-0.2	-0.3	-0.4	-0.6
Plastics and articles thereof.....	39	4.264	142.3	142.2	3.3	-0.3	-0.2	-0.1	-0.1
Rubber and articles thereof.....	40	1.020	180.1	174.5	-8.1	-0.1	-0.2	-1.6	-3.1
Raw hides, skins, leather, furskins, travel goods, etc.....	VIII	0.406	146.0	144.7	9.5	0.4	0.0	-0.4	-0.9
Wood, wood charcoal, cork, straw, basketware and wickerwork.....	IX	0.590	114.0	113.6	3.3	-0.1	-0.2	0.6	-0.4
Woodpulp, recovered paper, and paper products.....	X	2.299	123.1	122.0	5.4	0.4	0.7	0.3	-0.9
Woodpulp and recovered paper.....	47	0.631	130.3	125.7	7.9	0.7	2.4	-1.4	-3.5
Paper and paperboard; articles of paper pulp, paper or paperboard.....	48	1.214	120.3	120.4	2.8	0.4	-0.1	1.1	0.1
Printed material.....	49	0.455	132.0	132.0	9.0	0.0	0.0	1.0	0.0
Textile and textile articles.....	XI	1.862	132.3	131.9	5.1	0.7	0.3	0.7	-0.3
Cotton, including yarns and woven fabrics thereof.....	52	0.519	147.5	146.4	10.1	0.6	-1.5	2.9	-0.7
Stone, plaster, cement, asbestos, ceramics, glass etc.....	XIII	0.764	118.4	118.3	0.4	0.0	0.0	0.2	-0.1

See footnotes at end of table.

Table 6. U.S. export price indexes and percent changes for selected categories of goods: August 2012 to August 2013 — Continued
 [2000=100, unless otherwise noted]

Description	Harmonized system	Relative importance July 2013 ¹	Index		Percent change				
			July 2013	Aug. 2013	Annual	Monthly			
					Aug. 2012 to Aug. 2013	Apr. 2013 to May 2013	May 2013 to June 2013	June 2013 to July 2013	July 2013 to Aug. 2013
Glass and glassware.....	70	0.391	97.5	97.4	-1.1	0.0	0.0	0.0	-0.1
Pearls, stones, precious metals, imitation jewelry, and coins.....	XIV	4.636	244.5	241.1	-11.3	-4.6	-2.8	-3.7	-1.4
Base metals and articles of base metals.....	XV	5.249	163.8	164.3	-4.3	-1.7	0.1	-1.2	0.3
Iron and steel.....	72	1.441	182.8	183.8	-9.9	-2.9	-0.1	-2.1	0.5
Articles of iron or steel.....	73	1.318	168.3	169.1	-2.3	0.0	-0.4	-0.7	0.5
Copper and articles thereof.....	74	0.585	230.7	231.9	-4.3	-5.9	2.6	-2.6	0.5
Aluminum and articles thereof.....	76	0.836	121.8	121.7	-1.4	-0.9	-0.3	-0.6	-0.1
Tools, implements, cutlery, spoons and forks, of base metal; parts thereof.....	82	0.406	132.7	132.7	0.8	0.1	-0.1	0.0	0.0
Miscellaneous articles of base metal.....	83	0.326	146.9	146.9	0.6	0.4	0.1	-0.1	0.0
Machinery, electrical equipment, TV image and sound recorders, parts, etc.....	XVI	28.096	97.3	97.2	0.4	-0.1	0.0	0.1	-0.1
Machinery and mechanical appliances; parts thereof.....	84	16.789	111.4	111.4	0.8	0.0	0.1	-0.1	0.0
Electrical machinery and equipment and parts and accessories thereof.....	85	11.307	82.1	81.8	-0.4	-0.1	-0.1	0.5	-0.4
Vehicles, aircraft, vessels and associated transport equipment.....	XVII	12.068	128.2	128.2	1.2	-0.1	-0.1	0.2	0.0
Motor vehicles and their parts.....	87	8.184	114.0	114.0	1.0	-0.2	0.0	0.3	0.0
Optical, photo, measuring, medical & musical instruments; & timepieces.....	XVIII	5.923	107.1	107.0	0.9	-0.2	0.1	0.0	-0.1
Miscellaneous manufactured articles.....	XX	1.350	111.0	111.0	0.6	-0.2	-0.2	0.5	0.0
Furniture; stuffed furnishings; lamps and lighting fittings nesoi;.....	94	0.734	122.6	122.8	2.4	-0.1	0.6	0.7	0.2
Toys, games and sports equipment; parts and accessories thereof.....	95	0.507	89.7	89.5	-1.5	-0.3	-1.1	0.1	-0.2

¹ Relative importance figures are based on 2011 trade values.

NOTES: Data may be revised in each of the three months after original publication.

Dash = Not available

Table 7. U.S. import price indexes and percent changes by locality of origin: August 2012 to August 2013
 [2000=100, unless otherwise noted]

Description	Relative importance July 2013 ¹	Index		Percent change				
		July 2013	Aug. 2013	Annual	Monthly			
				Aug. 2012 to Aug. 2013	Apr. 2013 to May 2013	May 2013 to June 2013	June 2013 to July 2013	July 2013 to Aug. 2013
Industrialized Countries²	100.000	131.8	131.4	1.2	-0.1	-0.5	0.2	-0.3
Nonmanufactured articles.....	12.489	244.9	243.2	15.8	4.6	-0.7	2.5	-0.7
Manufactured articles.....	86.931	122.8	122.5	-0.5	-0.6	-0.6	-0.1	-0.2
Other Countries³	100.000	138.0	138.4	-0.9	-0.7	-0.2	0.0	0.3
Nonmanufactured articles.....	22.322	342.8	344.8	0.3	-2.2	-1.0	1.1	0.6
Manufactured articles.....	77.342	109.8	110.0	-1.3	-0.2	0.0	-0.4	0.2
Canada	100.000	152.8	152.8	3.7	0.6	-0.5	-0.1	0.0
Nonmanufactured articles.....	31.112	234.4	232.9	18.4	4.7	-0.7	2.4	-0.6
Manufactured articles.....	67.904	135.3	135.7	-1.7	-1.1	-0.3	-1.2	0.3
European Union⁴	100.000	135.4	135.2	0.5	-0.3	-0.1	0.1	-0.1
Nonmanufactured articles.....	1.012	349.7	349.8	-7.3	-4.1	-0.3	0.3	0.0
Manufactured articles.....	98.809	131.7	131.5	0.5	-0.2	-0.2	0.2	-0.2
France (Dec. 2003=100)	100.000	121.6	121.5	1.4	0.2	-0.1	-0.2	-0.1
Germany (Dec. 2003=100)	100.000	115.9	115.8	1.6	0.0	-0.1	0.2	-0.1
United Kingdom (Dec. 2003=100)	100.000	127.1	126.9	-5.3	-0.3	0.0	-0.5	-0.2
Latin America⁵	100.000	173.6	174.2	-1.1	-0.8	-0.3	0.1	0.3
Nonmanufactured articles.....	32.173	371.5	374.8	0.8	-1.5	-0.5	0.8	0.9
Manufactured articles.....	67.464	130.9	131.0	-1.7	-0.4	-0.2	-0.2	0.1
Mexico (Dec. 2003=100)	100.000	143.1	143.5	-0.8	-0.1	-0.8	0.0	0.3
Nonmanufactured articles (Dec. 2008=100).....	18.818	197.9	201.6	0.9	-0.7	-3.4	0.7	1.9
Manufactured articles (Dec. 2008=100)....	80.881	93.8	93.6	-1.1	0.0	-0.2	-0.1	-0.2
Pacific Rim (Dec. 2003=100)⁶	100.000	103.0	103.0	-1.3	-0.4	-0.1	-0.3	0.0
China (Dec. 2003=100)	100.000	103.5	103.5	-1.3	-0.6	0.0	0.0	0.0
Japan	100.000	100.1	100.0	-2.6	-0.4	-0.3	-0.5	-0.1
Asian NICs⁷	100.000	91.0	90.9	0.1	0.2	0.1	-0.3	-0.1
ASEAN (Dec. 2003=100)⁸	100.000	104.5	104.5	0.0	0.2	0.0	-0.2	0.0
Asia Near East (Dec. 2003=100)⁹	100.000	262.8	262.8	-0.7	-2.4	-2.0	1.3	0.0

1 Relative figures are based on 2011 trade values.

2 Western Europe, Canada, Japan, Australia, New Zealand and South Africa.

3 Eastern Europe, Latin America, OPEC countries, and other countries in Asia, Africa and the Western Hemisphere.

4 European Union countries.

5 Mexico, Central America, South America and the Caribbean.

6 China, Japan, Australia, Brunei, Indonesia, Macao, Malaysia, New Zealand, Papua New Guinea, Philippines and the Asian Newly Industrialized Countries.

7 Asian Newly Industrialized Countries - Hong Kong, Singapore, South Korea and Taiwan.

8 Association of Southeast Asian Nations - Brunei, Cambodia, Indonesia, Laos, Malaysia, Myanmar, Philippines, Singapore, Thailand and Vietnam.

9 Bahrain, Iran, Iraq, Israel, Jordan, Kuwait, Lebanon, Oman, Qatar, Saudi Arabia, Syria, United Arab Emirates and Yemen.

NOTES: Data may be revised in each of the three months after original publication.

Regions are not mutually exclusive.

Dash = Not available

Table 8. U.S. international price indexes and percent changes for selected transportation services: August 2012 to August 2013

[2000=100, unless otherwise noted]

Description	Relative importance July 2013 ¹	Index		Percent change				
		July 2013	Aug. 2013	Annual	Monthly			
				Aug. 2012 to Aug. 2013	Apr. 2013 to May 2013	May 2013 to June 2013	June 2013 to July 2013	July 2013 to Aug. 2013
Air Freight								
Import Air Freight	100.000	172.4	171.9	-0.8	-0.2	-0.3	0.3	-0.3
Europe (Dec. 2003=100).....	22.042	165.0	163.2	4.5	0.6	-0.2	0.9	-1.1
Asia.....	73.621	151.9	151.8	-2.4	-0.5	-0.3	0.3	-0.1
Export Air Freight	100.000	146.2	146.2	2.1	-1.1	-0.9	-0.1	0.0
Europe (Dec. 2006=100).....	35.926	131.6	131.8	1.4	-1.0	-0.7	-0.2	0.2
Inbound Air Freight	100.000	160.7	160.5	-0.3	-0.6	-0.8	0.1	-0.1
Europe (Dec. 2003=100).....	22.130	148.2	147.0	2.7	0.1	-0.4	0.3	-0.8
Asia.....	67.270	145.6	145.6	-1.4	-0.9	-1.0	0.1	0.0
Outbound Air Freight	100.000	145.0	145.4	0.4	-0.9	-1.3	-0.3	0.3
Europe (Dec. 2003=100).....	28.069	159.9	159.9	-2.0	-0.2	-0.1	-0.4	0.0
Asia.....	52.238	138.1	138.7	1.8	-1.3	-1.8	-0.2	0.4
Air Passenger Fares								
Import Air Passenger Fares	100.000	197.5	181.8	-0.5	2.0	10.7	-3.9	-7.9
Europe.....	42.784	219.8	201.9	6.2	-0.4	14.6	-8.0	-8.1
Asia.....	26.400	166.9	156.4	-3.0	3.2	11.4	-3.5	-6.3
Latin America/Caribbean.....	9.224	175.8	173.2	0.4	-1.7	5.0	1.5	-1.5
Export Air Passenger Fares	100.000	198.8	203.9	-4.9	5.2	2.1	2.6	2.6
Europe.....	31.367	262.1	249.8	2.8	4.5	16.4	1.6	-4.7
Asia.....	27.245	163.9	204.4	-11.0	8.3	-0.3	-1.3	24.7
Latin America/Caribbean.....	20.188	191.0	191.7	-13.6	-4.9	-1.0	5.9	0.4

¹ Relative importance figures are based on 2011 trade values.

NOTES: Data may be revised in each of the three months after original publication.

Dash = Not available

TECHNICAL NOTE

Import and Export Merchandise and Services Price Indexes -- All indexes use a modified Laspeyres formula and are not seasonally adjusted. Price indexes are reweighted annually, with a two-year lag in the weights. Published series use a base year of 2000=100 where possible. More detailed index series and additional information may be obtained at <http://www.bls.gov/mxp>, or by calling (202) 691-7101.

Merchandise Goods Classification Systems -- The merchandise price indexes are published using three classification systems. Items are classified by end use according to the Bureau of Economic Analysis Classification System, by industry according to the North American Industry Classification System (NAICS), and by product category according to the Harmonized System (HS). While classification by end use and product category are self-explanatory, some notes are in order for classifying items by industry. In the NAICS imports and exports tables, items are classified by output industry, not input industry. As an example, NAICS import index 326 (plastics and rubber products manufacturing) include outputs such as manufactured plastic rather than inputs such as petroleum. The NAICS classification structure also matches the classification system used by the PPI (Producer Price Index) to produce the NAICS primary products indexes.

Import Price Indexes -- Products have been classified by the Harmonized Tariff Schedule of the United States Annotated (TSUSA). Import prices are based on U.S. dollar prices paid by the U.S. importer. The prices are generally either "free on board" (f.o.b.) foreign port or "cost, insurance, and freight" (c.i.f.) U.S. port transaction prices, depending on the practices of the individual industry. The index for crude petroleum is calculated from data collected by the U.S. Department of Energy.

Export Price Indexes -- Products have been classified by the Harmonized Schedule B classification system of the U.S. Bureau of the Census. The prices used are generally either "free alongside ship" (f.a.s.) factory or "free on board" (f.o.b.) transaction prices, depending on the practices of the individual industry. Prices used in the grain index, excluding rice, are obtained from the U.S. Department of Agriculture.

Services Price Indexes -- Starting in September 2008 the Import Air Passenger Fares Indexes represent changes in the average revenue per passenger received by foreign carriers from U.S. residents and are calculated from data obtained from an airline consulting service. These data include tickets sold by travel agencies and travel websites. Tickets sold directly by the airlines are excluded, as are frequent flyer tickets generally. Starting in January 2008 the Export Air Passenger Fares Indexes represent changes in the average revenue per passenger received by U.S. carriers from foreign residents and are calculated from data collected directly from airlines. These data include frequent flyer tickets and those sold by consolidators. Taxes and fees are included in the Import Air Passenger Fares Index and excluded from the Export Air Passenger Fares Index. The Air Freight Indexes are calculated from data collected directly from airlines. These data exclude mail and passenger baggage. The scope of the service being priced is the movement of freight from airport to airport only, and does not include any ground transportation or port service. The Air Freight Indexes are presented using two definitions: Balance of Payments (which represent transactions between U.S. and foreign residents) and International (which represent transactions inbound to and outbound from the U.S.). Fact sheets specifying detailed information for each services industry are available at <http://www.bls.gov/mxp> under "MXP Publications."

Import Indexes by Locality of Origin -- Prices used in these indexes are a subset of the data collected for the Import Price Indexes. Beginning with January 2002, the indexes are defined by locality of origin using a nomenclature based upon the North American Industry Classification System (NAICS). Nonmanufactured goods are defined as NAICS 11 and 21 and manufactured goods are defined as NAICS 31-33.

Revision Policy -- To reflect the availability of late reports and corrections by respondents, monthly data may be revised in each of the three months after original publication. After three months, no further data revisions take place. So, for example, data released in the January release will be subject to revision in the releases for February, March, and April.

Uses of the Data -- The primary use of the indexes is to deflate trade statistics, notably the foreign trade sector of the National Income and Product Accounts constructed by the Department of Commerce. Other published indexes are useful for general market analysis. For trade in international services, Balance of Payments indexes are used for deflating National Income and Product Accounts, while International indexes are more appropriate for market analysis. Merchandise and services indexes also can be used to study U.S. competitiveness and to compute price elasticities, and the merchandise import indexes by country or region of origin are useful in terms of trade analysis.

E-Mail Subscription -- The U.S. Import and Export Price Indexes news release is available through an e-mail subscription service at (<http://www.bls.gov/bls/list.htm>).

Additional Information -- More detailed data are available on the Import/Export Price Indexes home page at (<http://www.bls.gov/mxp>). Flat Files and the FTP server are available for users requiring access to either a large volume of time series data or other related documentation. The FTP site can be accessed at <ftp://ftp.bls.gov>. For technical assistance in using the BLS Internet site, send e-mail to (labstat.helpdesk@bls.gov). For Import/Export Price Index data requests, send e-mail to (mxpinfo@bls.gov).

Information from this release will be made available to sensory impaired individuals upon request. Voice phone: 202-691-5200; Federal Relay Service: 1-800-877-8339.