

Transmission of material in this release is embargoed until
8:30 a.m. (EDT) Tuesday, August 13, 2013

USDL-13-1624

Technical information: (202) 691-7101 • MXPinfo@bls.gov • www.bls.gov/mxp
Media contact: (202) 691-5902 • PressOffice@bls.gov

U.S. IMPORT AND EXPORT PRICE INDEXES – JULY 2013

Prices for U.S. imports rose 0.2 percent in July, the U.S. Bureau of Labor Statistics reported today, after decreasing in each of the previous 4 months. The July upturn was driven by rising fuel prices which more than offset lower nonfuel prices. In July, U.S. exports edged down 0.1 percent for the second consecutive month.

Chart 1. One-month percent change in the Import Price Index: July 2012 – July 2013

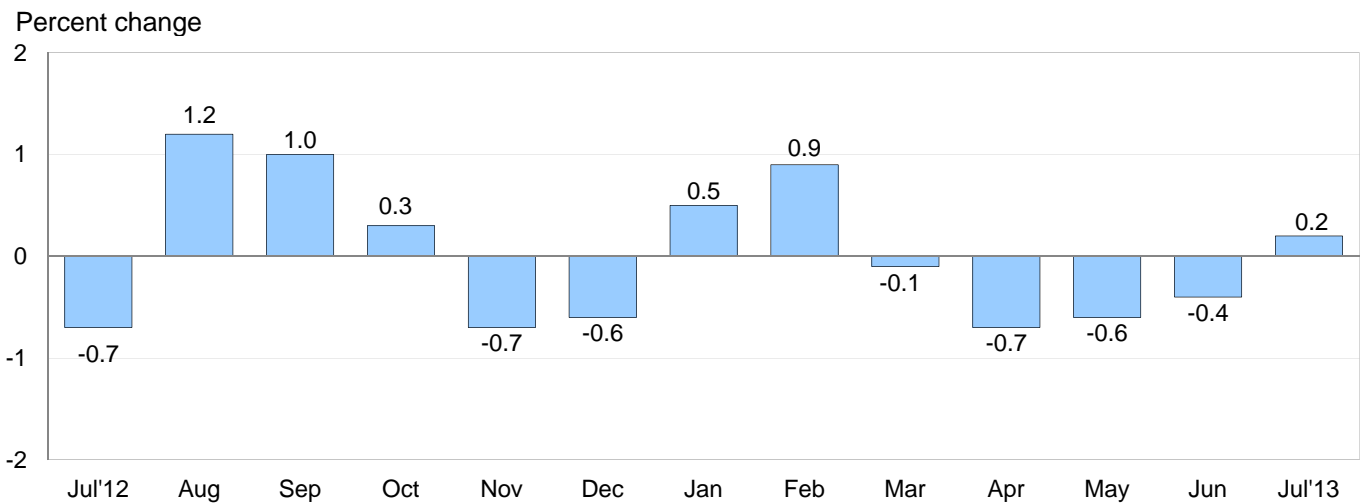
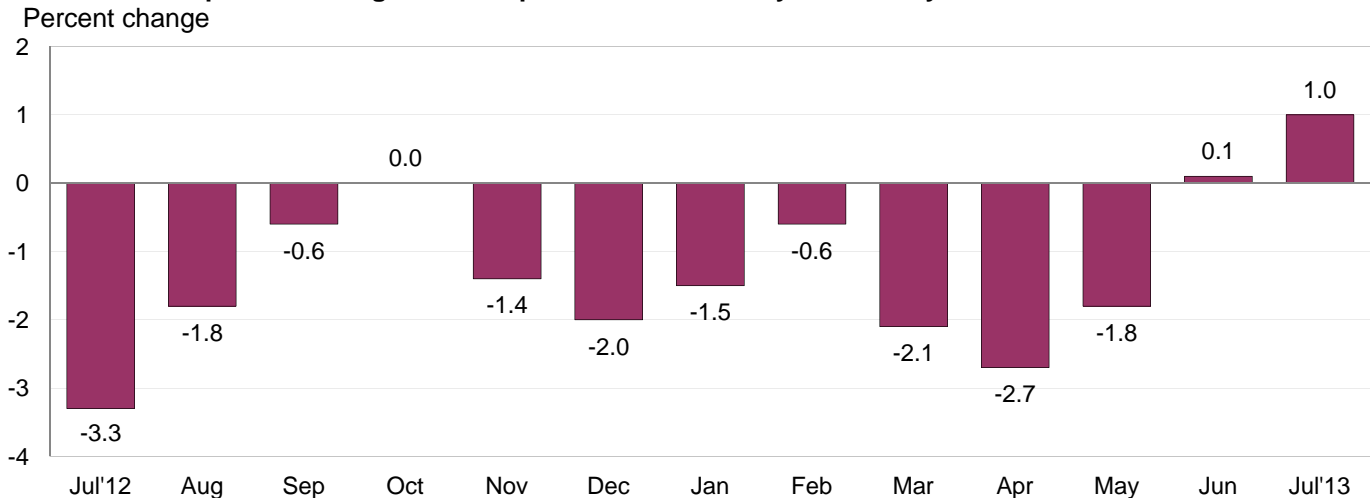


Chart 2. 12-month percent change in the Import Price Index: July 2012 – July 2013



All Imports: Import prices turned up 0.2 percent in July, after declining 1.8 percent over the prior 4 months. The July increase was the first advance since import prices rose 0.9 percent in February. The price index for overall imports increased 1.0 percent over the past year, the largest 12-month rise since import prices advanced 3.5 percent between March 2011 and March 2012.

Fuel Imports: Fuel prices increased 2.5 percent in July following a 0.8 percent decline in June, a 1.7 percent drop in May, and a 2.4 percent decrease in April. The July advance was the first increase in fuel prices since the index rose 3.6 percent in February, and was led by a 3.2 percent advance in petroleum prices. In contrast, natural gas prices fell 13.6 percent in July. Import fuel prices also rose on a 12-month basis, increasing 8.5 percent for the year ended in July. A 7.8 percent advance in petroleum prices and a 49.3 percent rise in natural gas prices each contributed to the year-over-year increase in fuel prices.

All Imports Excluding Fuel: In contrast to fuel prices, nonfuel prices continued to decrease in July, declining 0.4 percent. The decrease followed a 0.3 percent drop in June and was the fifth consecutive monthly decline. In July, falling prices for nonfuel industrial supplies and materials, automotive vehicles, and consumer goods more than offset rising prices for capital goods and foods, feeds, and beverages.

Table A. Import and export price indexes, selected categories
Percent changes

Month	IMPORTS			EXPORTS		
	All imports	Fuel imports	Nonfuel imports	All exports	Agricultural exports	Non-agricultural exports
2012						
July.....	-0.7	-2.0	-0.4	0.4	6.0	-0.2
August.....	1.2	6.1	-0.2	0.9	4.8	0.4
September.....	1.0	3.9	0.2	0.8	1.3	0.7
October.....	0.3	0.1	0.2	0.1	-1.7	0.3
November.....	-0.7	-2.2	-0.2	-0.6	0.5	-0.7
December.....	-0.6	-2.2	-0.1	-0.1	0.1	-0.2
2013						
January.....	0.5	1.9	0.2	0.4	-1.2	0.5
February.....	0.9	3.6	0.1	0.7	2.0	0.6
March.....	-0.1	0.0	-0.1	-0.5	-1.8	-0.3
April.....	-0.7 ^r	-2.4	-0.2	-0.6 ^r	-2.1 ^r	-0.5
May.....	-0.6 ^r	-1.7 ^r	-0.4 ^r	-0.5	1.0 ^r	-0.7
June.....	-0.4 ^r	-0.8 ^r	-0.3	-0.1	0.8 ^r	-0.2
July.....	0.2	2.5	-0.4	-0.1	-0.3	0.0
July 2011 to 2012.....	-3.3	-13.4	0.0	-1.3	3.9	-1.9
July 2012 to 2013.....	1.0	8.5	-1.0	0.4	3.1	0.0

r Revised

Chart 3. One-month percent change in the Export Price Index: July 2012 – July 2013

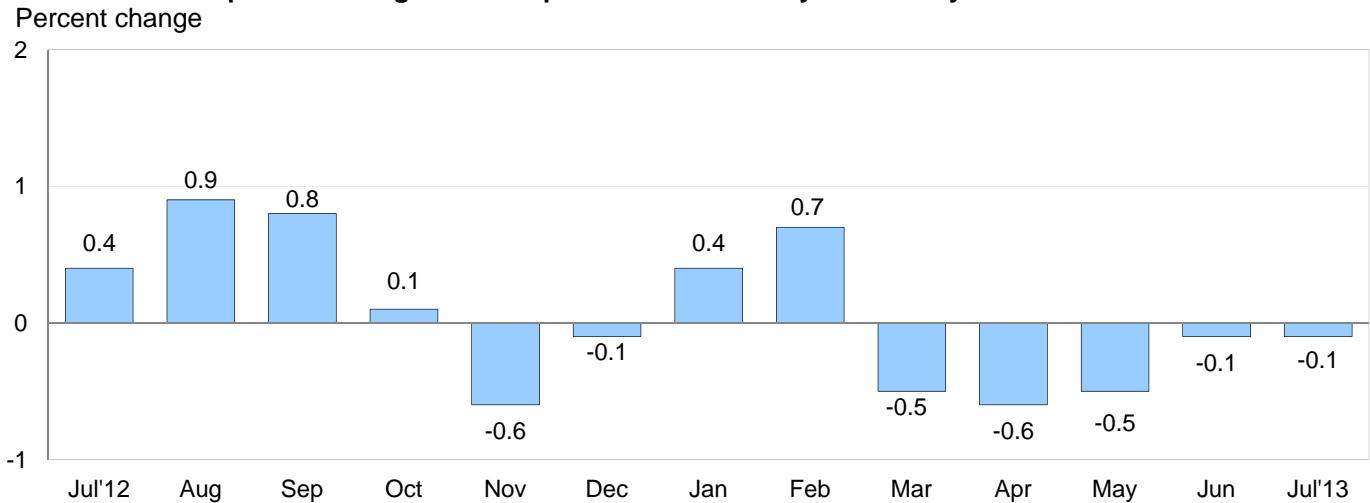
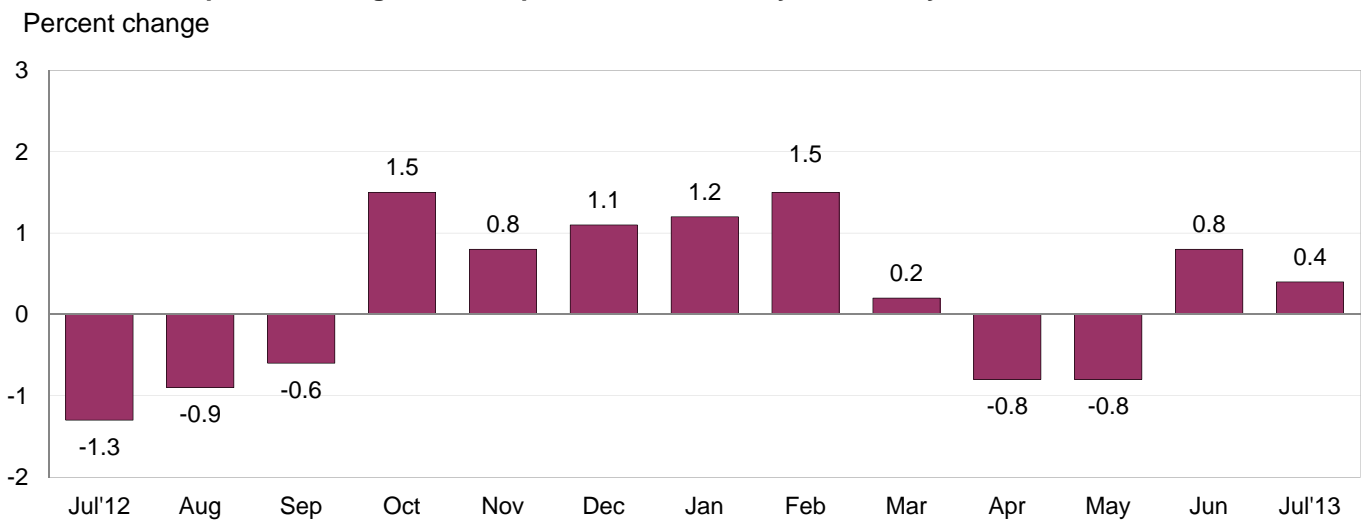


Chart 4. 12-month percent change in the Export Price Index: July 2012 – July 2013



All Exports: U.S. export prices edged down 0.1 percent in July, and continued the downward trend over the previous 4 months. In July, the decline was led by lower agricultural prices. Despite the decreases in each of the past 5 months, overall export prices rose 0.4 percent for the year ended in July.

Agricultural Exports: Prices for agricultural exports declined 0.3 percent in July, following increases of 0.8 percent in June and 1.0 percent in May. The July decline was driven by lower prices for wheat, corn, and fruit, down 7.4 percent, 3.3 percent, and 4.6 percent, respectively, which more than offset higher prices for soybeans and nuts. Agricultural export prices increased 3.1 percent over the past year.

All Exports Excluding Agriculture: The price index for nonagricultural prices recorded no change in July, after decreasing 1.6 percent between February and June. In July, falling prices for nonagricultural industrial supplies and materials offset rising finished goods prices. Overall nonagricultural export prices also recorded no change over the past 12 months following a 1.9 percent decline for the year ended July 2012.

SELECTED JULY HIGHLIGHTS

Import Prices

Imports by Locality of Origin: Prices for imports from Japan fell 0.5 percent in July following a 0.3 percent decrease the previous month. Import prices from Japan declined 2.4 percent over the past 12 months, the largest year-over-year decrease for the index since a 2.5 percent decline between December 2001 and December 2002. The price index for imports from China edged down 0.1 percent in July after recording no change in June. Prices for imports from China declined 1.4 percent over the past year, the largest 12-month decrease for the index since a 1.7 percent drop for the year ended in January 2010. Import prices from Canada also fell in July, declining 0.1 percent. In contrast, the price indexes for imports from the European Union and Mexico both rose in July, increasing 0.2 percent and 0.5 percent, respectively.

Nonfuel Industrial Supplies and Materials: Prices for nonfuel industrial supplies and materials fell 1.6 percent in July, after a 1.0 percent decline in June. Falling metal prices, notably for gold and other precious metals, drove the declines in each month. In July, declining chemical prices also contributed to the overall decrease in nonfuel industrial supplies and materials prices.

Finished Goods: Finished goods prices were mostly down in July. Automotive vehicles prices fell 0.5 percent, mostly attributable to falling prices for passenger cars. The July drop in automotive vehicles prices paralleled the recent rise in the value of the U.S. dollar compared to the yen, and was the largest drop since a 1.1 percent decline in December 1992. The price index for consumer goods also fell in July, decreasing 0.2 percent. In contrast, capital goods prices ticked up 0.1 percent in July.

Foods, Feeds, and Beverages: Prices for import foods, feeds, and beverages advanced 0.2 percent in July following a 1.0 percent decline the previous month. The July increase was led by a 2.8 percent rise in vegetable prices.

Transportation Services: Import air passenger fares fell 3.9 percent in July, after jumping 10.7 percent in June. The decrease in July was driven by a downturn in European fares, down 8.0 percent for the month. Despite the July decline, import air passenger fares advanced 2.1 percent over the past 12 months. The price index for import air freight advanced 0.3 percent in July, while decreasing 2.1 percent over the past year.

Export Prices

Nonagricultural Industrial Supplies and Materials: Nonagricultural industrial supplies and materials prices fell 0.3 percent in July, after decreasing 0.5 percent in June. Both declines were driven by lower prices for nonferrous metals, which fell 4.1 percent in July and 2.5 percent in June.

Finished Goods: Each of the major finished goods areas recorded increases in July. Capital goods prices rose 0.3 percent, the largest monthly advance since a 0.3 percent rise in February, while the price indexes for consumer goods and automotive vehicles each ticked up 0.1 percent.

Transportation Services: Export air passenger fares continued to rise in July, advancing 1.5 percent, after advances of 2.1 percent in June and 5.2 percent in May. In July, the increase was mostly driven by a 6.2 percent rise in Latin American/Caribbean fares. Despite the recent advances, export air passenger fares fell 7.5 percent over the past year. Export air freight prices edged down 0.1 percent in July, while increasing 1.0 percent over the past 12 months.

Import and Export Price Index data for August 2013 are scheduled for release on Thursday, September 12, 2013 at 8:30 a.m. (EDT).

Table 1. U.S. import price indexes and percent changes for selected categories of goods: July 2012 to July 2013

[2000=100, unless otherwise noted]

Description	End Use	Relative importance June 2013 ¹	Index		Percent change				
			June 2013	July 2013	Annual July 2012 to July 2013	Monthly			
						Mar. 2013 to Apr. 2013	Apr. 2013 to May 2013	May 2013 to June 2013	June 2013 to July 2013
All commodities.....		100.000	138.8	139.1	1.0	-0.7	-0.6	-0.4	0.2
All imports excluding food and fuels (Dec. 2010=100).....		74.067	102.5	102.1	-1.2	-0.2	-0.4	-0.3	-0.4
All imports excluding petroleum.....		80.173	115.7	115.1	-0.7	0.0	-0.3	-0.3	-0.5
All imports excluding fuels (Dec. 2001=100).....		79.117	119.6	119.1	-1.0	-0.2	-0.4	-0.3	-0.4
Foods, feeds, & beverages.....	0	5.050	172.1	172.5	1.5	-0.3	0.4	-1.0	0.2
Agricultural foods, feeds & beverages, excluding distilled beverages.....	00	3.858	190.0	190.8	-0.4	-1.0	0.3	-1.6	0.4
Nonagricultural foods (fish, distilled beverages).....	01	1.192	131.4	131.1	8.1	2.4	0.9	0.7	-0.2
Industrial supplies & materials.....	1	34.153	247.1	249.3	3.5	-1.7	-1.5	-0.9	0.9
Industrial supplies & materials excluding petroleum.....		14.327	163.5	159.7	-2.1	-0.1	-1.1	-1.0	-2.3
Industrial supplies & materials excluding fuels (Dec. 2001=100).....		13.271	182.9	179.9	-4.1	-0.7	-1.3	-1.0	-1.6
Industrial supplies & materials, durable.....		7.790	170.1	167.1	-4.5	-1.0	-2.2	-1.3	-1.8
Industrial supplies & materials nondurable excluding petroleum.....		5.481	155.1	150.5	0.9	1.2	0.1	-0.4	-3.0
Fuels & lubricants.....	10	20.881	329.8	337.9	8.5	-2.4	-1.7	-0.8	2.5
Petroleum & petroleum products.....	100	19.825	364.5	376.0	7.8	-3.0	-1.8	-0.8	3.2
Crude.....	10000	15.207	378.4	394.2	10.5	-3.0	-1.0	-0.8	4.2
Fuels, n.e.s.-coals & gas.....	101	0.845	139.5	122.2	39.5	12.5	0.6	-0.6	-12.4
Gas-natural.....	10110	0.719	127.2	109.9	49.3	15.4	1.3	-0.6	-13.6
Paper & paper base stocks.....	11	0.565	113.2	113.3	-0.6	0.0	0.5	-0.1	0.1
Materials associated with nondurable supplies & materials.....	12	4.995	173.2	170.5	-3.7	-0.4	-0.2	-0.5	-1.6
Selected building materials.....	13	1.020	143.3	140.9	1.5	1.3	-1.7	-3.4	-1.7
Unfinished metals related to durable goods.....	14	3.563	243.8	237.2	-8.1	-2.1	-3.9	-1.7	-2.7
Finished metals related to durable goods.....	15	1.590	158.3	155.6	-4.0	-0.6	-0.4	-0.4	-1.7
Nonmetals related to durable goods.....	16	1.538	113.6	113.9	-0.4	-0.2	-0.4	-0.2	0.3
Capital goods.....	2	24.152	92.6	92.7	-0.6	-0.2	-0.1	-0.1	0.1
Electric generating equipment.....	20	3.019	119.5	119.4	0.2	0.2	-0.2	0.0	-0.1
Nonelectrical machinery.....	21	19.259	85.3	85.4	-0.9	-0.3	-0.1	-0.1	0.1
Transportation equipment excluding motor vehicles (Dec. 2001=100).....	22	1.874	135.7	135.8	1.3	0.1	-0.1	-0.1	0.1
Automotive vehicles, parts & engines.....	3	12.243	114.0	113.4	-1.0	-0.3	-0.3	-0.2	-0.5
Consumer goods, excluding automotives.....	4	24.401	107.6	107.4	-0.1	0.3	-0.3	-0.1	-0.2
Nondurables, manufactured.....	40	11.894	116.1	116.2	1.1	0.7	-0.6	0.2	0.1
Durables, manufactured.....	41	11.177	98.9	98.4	-1.2	0.0	-0.1	-0.2	-0.5
Nonmanufactured consumer goods.....	42	1.330	116.4	116.4	-1.6	0.2	0.3	-0.4	0.0

¹ Relative importance figures are based on 2011 trade values.

NOTES: Data may be revised in each of the three months after original publication.

Dash = Not available

Table 2. U.S. export price indexes and percent changes for selected categories of goods: July 2012 to July 2013

[2000=100, unless otherwise noted]

Description	End Use	Relative importance June 2013 ¹	Index		Percent change				
			June 2013	July 2013	Annual July 2012 to July 2013	Monthly			
						Mar. 2013 to Apr. 2013	Apr. 2013 to May 2013	May 2013 to June 2013	June 2013 to July 2013
All commodities		100.000	132.8	132.7	0.4	-0.6	-0.5	-0.1	-0.1
Agricultural commodities		10.616	224.1	223.4	3.1	-2.1	1.0	0.8	-0.3
All exports excluding food and fuels (Dec. 2010=100)		81.078	102.3	102.1	0.0	-0.1	-0.5	-0.2	-0.2
Nonagricultural commodities		89.385	126.2	126.2	0.0	-0.5	-0.7	-0.2	0.0
Foods, feeds, & beverages	0	9.840	223.8	222.8	1.6	-2.3	0.8	0.8	-0.4
Agricultural foods, feeds & beverages, excluding distilled beverages.....	00	9.190	228.7	227.5	2.2	-2.4	1.2	1.0	-0.5
Nonagricultural foods (fish, distilled beverages).....	01	0.650	178.6	180.0	-5.8	-0.4	-4.4	-1.9	0.8
Industrial supplies & materials	1	33.764	177.5	177.1	-0.3	-1.0	-1.5	-0.6	-0.2
Industrial supplies & materials, durable.....		11.821	175.5	171.6	-6.0	-0.4	-2.5	-1.1	-2.2
Industrial supplies & materials, nondurable.....		21.945	179.4	180.9	2.8	-1.3	-1.0	-0.2	0.8
Agricultural industrial supplies & materials..	10	1.426	203.9	206.1	9.0	-0.1	0.4	-0.8	1.1
Nonagricultural industrial supplies & materials		32.338	176.7	176.2	-0.7	-1.0	-1.7	-0.5	-0.3
Fuels & lubricants.....	11	9.083	250.7	255.7	2.3	-2.8	-2.3	-0.2	2.0
Nonagricultural supplies & materials excluding fuels & building materials.....	12	22.223	168.1	166.0	-2.1	-0.3	-1.5	-0.7	-1.2
Selected building materials.....	13	1.032	122.5	123.5	4.2	1.2	0.2	0.2	0.8
Capital goods	2	35.467	106.4	106.7	1.0	-0.2	-0.1	0.0	0.3
Electrical generating equipment.....	20	3.489	114.4	115.4	1.7	0.0	0.0	-0.4	0.9
Nonelectrical machinery.....	21	25.785	95.4	95.6	0.7	-0.2	-0.1	0.1	0.2
Transportation equipment excluding motor vehicles (Dec. 2001=100).....	22	6.194	151.6	151.7	1.7	0.0	0.0	0.0	0.1
Automotive vehicles, parts & engines	3	8.961	113.4	113.5	0.4	0.0	-0.1	0.0	0.1
Consumer goods, excluding automotives ..	4	11.969	115.4	115.5	-0.7	-0.3	-0.2	0.1	0.1
Nondurables, manufactured.....	40	5.487	115.0	115.2	0.4	-0.5	0.3	0.2	0.2
Durables, manufactured.....	41	5.080	111.5	111.4	-2.7	0.0	-0.6	-0.1	-0.1

¹ Relative importance figures are based on 2011 trade values.

NOTES: Data may be revised in each of the three months after original publication.

Dash = Not available

Table 3. U.S. import price indexes and percent changes for selected categories of goods: July 2012 to July 2013

[December 2005=100, unless otherwise noted]

Description	NAICS	Relative importance June 2013 ¹	Index		Percent change				
			June 2013	July 2013	Annual July 2012 to July 2013	Monthly			
						Mar. 2013 to Apr. 2013	Apr. 2013 to May 2013	May 2013 to June 2013	June 2013 to July 2013
Nonmanufactured articles.....		18.383	164.6	168.8	10.6	-2.2	-0.7	-1.0	2.6
Agriculture, forestry, fishing and hunting...	11	1.842	173.3	171.5	1.4	-1.8	1.3	-1.5	-1.0
Crop production.....	111	1.282	176.9	176.9	0.7	-3.0	2.0	-2.2	0.0
Forestry and logging (Dec. 2012=100).....	113	0.206	105.3	98.3	—	-1.7	2.0	-0.1	-6.6
Mining.....	21	16.541	163.3	168.2	11.6	-2.2	-1.0	-0.9	3.0
Mining (except oil and gas) (Dec. 2006=100).....	212	0.323	133.2	130.2	-9.3	-0.4	0.2	-0.4	-2.3
Manufactured articles.....		81.154	116.2	115.8	-1.2	-0.3	-0.6	-0.3	-0.3
Manufactured goods, part 1.....	31	10.569	123.5	123.3	-1.0	0.0	0.2	-0.2	-0.2
Food manufacturing.....	311	2.874	154.1	154.0	-2.7	0.4	0.6	-0.7	-0.1
Beverage and tobacco product manufacturing.....	312	0.878	113.2	113.7	2.2	-0.2	0.2	-0.3	0.4
Textile mills (Dec. 2011=100).....	313	0.391	101.3	100.7	-1.0	-0.1	-0.2	-0.3	-0.6
Textile product mills.....	314	0.794	115.6	114.6	-1.0	0.1	0.1	0.1	-0.9
Apparel manufacturing.....	315	3.958	110.4	110.3	-1.4	-0.1	-0.2	0.1	-0.1
Leather and allied product manufacturing. . .	316	1.674	121.9	121.6	1.2	0.2	-0.1	0.3	-0.2
Manufactured goods, part 2.....	32	17.842	136.2	136.0	-0.4	-0.4	-1.7	-0.4	-0.1
Wood product manufacturing.....	321	0.608	122.8	119.7	1.9	2.4	-2.9	-5.0	-2.5
Paper manufacturing.....	322	1.039	110.4	110.8	-0.4	0.0	0.4	-0.1	0.4
Petroleum and coal products manufacturing.....	324	4.096	156.8	157.7	-2.4	-2.7	-4.3	-0.6	0.6
Chemical manufacturing.....	325	9.235	135.3	134.6	0.7	0.4	-1.0	-0.1	-0.5
Plastics and rubber products manufacturing.....	326	1.942	125.4	125.5	-1.5	-0.6	-0.2	-0.4	0.1
Nonmetallic mineral product manufacturing.....	327	0.839	129.0	129.0	-0.8	0.1	0.0	0.0	0.0
Manufactured goods, part 3.....	33	52.743	108.5	108.1	-1.5	-0.4	-0.4	-0.3	-0.4
Primary metal manufacturing.....	331	4.169	160.3	155.9	-8.7	-2.2	-3.4	-1.7	-2.7
Fabricated metal product manufacturing. . .	332	2.667	128.0	126.8	-2.3	-0.2	-0.7	-0.2	-0.9
Machinery manufacturing.....	333	6.639	121.2	121.5	0.4	-0.4	0.2	-0.2	0.2
Computer and electronic product manufacturing.....	334	16.103	81.0	80.9	-1.7	-0.1	-0.1	0.0	-0.1
Electrical equipment, appliance, and component manufacturing.....	335	4.038	119.4	119.4	0.8	-0.2	-0.2	0.0	0.0
Transportation equipment manufacturing. . .	336	13.003	111.9	111.4	-0.3	-0.3	-0.2	-0.2	-0.4
Furniture and related product manufacturing.....	337	1.260	114.2	114.2	0.5	0.1	0.0	-0.2	0.0
Miscellaneous manufacturing.....	339	4.864	120.8	120.6	-1.4	0.1	-0.1	-0.1	-0.2

¹ Relative importance figures are based on 2011 trade values.

NOTES: Data may be revised in each of the three months after original publication.

Dash = Not available

Table 4. U.S. export price indexes and percent changes for selected categories of goods: July 2012 to July 2013

[December 2005=100, unless otherwise noted]

Description	NAICS	Relative importance June 2013 ¹	Index		Percent change				
			June 2013	July 2013	Annual July 2012 to July 2013	Monthly			
						Mar. 2013 to Apr. 2013	Apr. 2013 to May 2013	May 2013 to June 2013	June 2013 to July 2013
Nonmanufactured articles.....		7.940	171.9	169.3	-1.0	-2.8	1.6	0.0	-1.5
Agriculture, forestry, fishing and hunting...	11	5.834	212.5	211.0	0.6	-3.9	1.9	0.7	-0.7
Crop production.....	111	5.421	222.3	220.0	0.6	-4.6	2.7	1.2	-1.0
Mining.....	21	2.106	92.6	89.0	-6.2	0.1	0.9	-1.9	-3.9
Mining (except oil and gas).....	212	1.421	105.3	103.2	-13.4	-0.6	-0.3	-0.8	-2.0
Manufactured articles.....		89.644	120.3	120.5	0.6	-0.5	-0.6	-0.1	0.2
Manufactured goods, part 1.....	31	7.053	151.6	152.0	3.7	-0.3	-0.5	0.5	0.3
Food manufacturing.....	311	4.945	173.5	174.1	3.9	-0.5	-0.8	0.5	0.3
Beverage and tobacco product manufacturing.....	312	0.574	127.6	127.5	4.9	-0.7	-0.1	0.3	-0.1
Manufactured goods, part 2.....	32	26.350	132.4	133.4	2.0	-1.1	-0.8	-0.1	0.8
Wood product manufacturing.....	321	0.422	117.8	119.5	5.2	1.0	0.3	0.3	1.4
Paper manufacturing.....	322	1.833	122.1	122.0	2.2	0.2	0.4	0.4	-0.1
Petroleum and coal products manufacturing.....	324	6.788	159.6	165.9	4.3	-4.0	-3.0	0.3	3.9
Chemical manufacturing.....	325	14.281	130.9	130.5	1.0	-0.3	-0.2	-0.3	-0.3
Plastics and rubber products manufacturing.....	326	2.241	120.5	119.5	1.8	0.9	0.4	-0.6	-0.8
Nonmetallic mineral product manufacturing.....	327	0.785	111.0	111.1	-0.9	0.3	-0.2	0.0	0.1
Manufactured goods, part 3.....	33	56.241	112.5	112.4	-0.4	-0.2	-0.5	-0.2	-0.1
Primary metal manufacturing.....	331	4.790	155.0	149.9	-10.8	-1.0	-4.2	-2.4	-3.3
Fabricated metal product manufacturing. ...	332	2.764	131.5	130.8	-0.5	0.2	-0.5	-0.1	-0.5
Machinery manufacturing.....	333	11.675	122.1	122.5	1.7	0.0	0.1	0.0	0.3
Computer and electronic product manufacturing.....	334	14.213	88.7	88.8	-0.8	-0.4	-0.2	0.1	0.1
Electrical equipment, appliance, and component manufacturing.....	335	3.320	113.9	114.5	2.1	0.3	0.1	-0.2	0.5
Transportation equipment manufacturing....	336	14.189	117.9	118.0	0.9	0.0	0.0	0.0	0.1
Furniture and related product manufacturing (Dec. 2011=100).....	337	0.316	105.6	107.8	4.7	0.3	-0.4	0.2	2.1
Miscellaneous manufacturing.....	339	4.974	122.1	122.2	0.3	0.0	-0.4	0.2	0.1

¹ Relative importance figures are based on 2011 trade values.

NOTES: Data may be revised in each of the three months after original publication.

Dash = Not available

Table 5. U.S. import price indexes and percent changes for selected categories of goods: July 2012 to July 2013

[2000=100, unless otherwise noted]

Description	Harmoni- zied system	Relative importance June 2013 ¹	Index		Percent change				
			June 2013	July 2013	Annual July 2012 to July 2013	Monthly			
						Mar. 2013 to Apr. 2013	Apr. 2013 to May 2013	May 2013 to June 2013	June 2013 to July 2013
Live animals; animal products.....	I	1.161	179.3	179.4	10.1	1.8	0.3	1.8	0.1
Meat and edible meat offal.....	02	0.254	219.4	222.2	2.6	1.0	0.0	0.0	1.3
Fish and crustaceans, molluscs and other aquatic invertebrates.....	03	0.654	134.7	133.4	15.2	3.0	1.4	3.1	-1.0
Vegetable products.....	II	1.601	204.2	201.9	-5.4	-2.1	1.4	-4.2	-1.1
Edible vegetables, roots, and tubers.....	07	0.360	347.5	353.3	16.8	-12.5	6.8	-1.6	1.7
Edible fruit and nuts; peel of citrus fruit or melons.....	08	0.412	110.4	111.2	-4.7	5.6	-2.2	-10.0	0.7
Coffee, tea, mate and spices.....	09	0.366	235.7	230.7	-15.5	-4.2	0.1	-1.9	-2.1
Animal or vegetable fats and oils (Dec. 2009=100).....	III	0.250	116.2	115.7	-9.2	-1.2	-1.0	-0.4	-0.4
Prepared foodstuffs, beverages, and tobacco.....	IV	2.403	156.5	157.2	0.4	-0.3	0.5	-0.8	0.4
Sugars and sugar confectionary (Dec. 2012=100).....	17	0.195	91.9	94.4	-	-3.4	-1.8	-3.9	2.7
Cocoa and cocoa preparations (Dec. 2009=100).....	18	0.205	90.6	90.8	12.8	-0.8	3.2	2.6	0.2
Preparations of cereals, flour, starch or milk; bakers' wares (Dec. 2007=100).....	19	0.240	130.7	130.0	1.8	0.0	-0.3	-0.6	-0.5
Preparations of vegetables, fruit, nuts, or other parts of plants.....	20	0.318	165.0	164.5	-3.6	0.2	2.1	0.1	-0.3
Beverages, spirits, and vinegar.....	22	0.869	124.1	124.5	2.5	-0.3	0.4	-0.4	0.3
Mineral products.....	V	20.825	332.2	340.9	8.6	-2.4	-1.6	-0.8	2.6
Mineral fuels, oils and residuals, bituminous substances and mineral waxes.....	27	20.538	328.8	337.7	8.9	-2.4	-1.6	-0.8	2.7
Products of the chemical or allied industries.....	VI	8.659	150.1	149.3	-0.3	0.4	-1.0	-0.3	-0.5
Inorganic chemicals.....	28	0.790	348.4	339.0	-13.2	-2.1	-1.5	-1.2	-2.7
Organic chemicals.....	29	2.621	135.1	134.4	-2.7	-1.0	-1.0	-0.2	-0.5
Pharmaceutical products.....	30	3.423	125.1	125.9	7.7	2.4	-1.0	0.0	0.6
Fertilizers (Dec. 2009=100).....	31	0.402	126.2	119.8	-12.0	-1.1	-1.9	0.1	-5.1
Tanning extracts; dye, pigments, varnish, paints & putty (Dec. 2011=100).....	32	0.165	93.8	94.1	-9.3	-0.1	0.1	-0.1	0.3
Miscellaneous chemical products.....	38	0.474	99.3	97.6	-4.5	-1.2	-0.6	-1.7	-1.7
Plastics and articles thereof; rubber and articles thereof.....	VII	3.227	152.1	151.0	-0.1	-0.3	-0.3	-0.2	-0.7
Plastics and articles thereof.....	39	1.977	148.0	148.0	4.0	0.3	-0.5	0.1	0.0
Rubber and articles thereof.....	40	1.250	160.8	157.7	-6.4	-1.2	-0.1	-0.6	-1.9
Raw hides, skins, leather, furskins, travel goods, etc.....	VIII	0.599	125.4	125.5	-0.6	0.1	-0.5	-0.4	0.1
Articles of leather; travel goods, bags, etc. of various materials.....	42	0.567	126.9	126.9	-0.2	0.1	-0.1	-0.4	0.0
Wood, wood charcoal, cork, straw, basketware and wickerwork.....	IX	0.648	150.3	146.0	2.5	2.8	-2.7	-5.1	-2.9
Woodpulp, recovered paper, and paper products.....	X	1.139	113.6	113.9	0.0	0.1	0.2	0.1	0.3
Pulp wood, waste paper, and paperboard (Dec. 2011=100).....	47	0.182	104.4	104.0	0.1	0.7	2.3	-0.3	-0.4
Paper and paperboard; articles of paper pulp, paper or paperboard.....	48	0.755	107.0	107.6	-0.5	-0.1	-0.2	0.1	0.6
Textile and textile articles.....	XI	4.990	114.1	113.7	-1.4	-0.2	-0.1	0.2	-0.4
Articles of apparel and clothing accessories, knitted or crocheted.....	61	1.954	103.5	103.2	-2.9	-0.1	-0.5	0.1	-0.3

See footnotes at end of table.

Table 5. U.S. import price indexes and percent changes for selected categories of goods: July 2012 to July 2013 — Continued
 [2000=100, unless otherwise noted]

Description	Harmonized system	Relative importance June 2013 ¹	Index		Percent change				
			June 2013	July 2013	Annual July 2012 to July 2013	Monthly			
						Mar. 2013 to Apr. 2013	Apr. 2013 to May 2013	May 2013 to June 2013	June 2013 to July 2013
Articles of apparel and clothing accessories, not knitted or crocheted.....	62	1.842	117.7	117.7	0.0	-0.1	0.2	0.3	0.0
Made-up or worn textile articles.....	63	0.554	108.5	107.9	-0.5	0.4	0.1	0.2	-0.6
Headgear, umbrellas, artificial flowers, etc.. ..	XII	1.373	121.3	120.9	1.2	0.2	-0.2	0.2	-0.3
Footwear and parts of such articles.....	64	1.177	120.5	120.0	1.1	0.2	-0.2	0.2	-0.4
Stone, plaster, cement, asbestos, ceramics, glass etc.....	XIII	0.771	131.9	131.8	-0.3	-0.2	0.0	0.0	-0.1
Articles of stone, plaster, cement, asbestos, or mica (Dec. 2001=100).....	68	0.249	125.6	125.8	0.1	-0.2	0.2	0.1	0.2
Ceramic products.....	69	0.241	140.1	140.7	-1.0	0.1	-0.1	-0.1	0.4
Glass and glassware.....	70	0.281	127.9	126.9	-0.2	-0.3	-0.1	0.0	-0.8
Pearls, stones, precious metals, imitation jewelry, and coins.....	XIV	3.095	186.2	179.9	-9.5	-1.2	-3.9	-2.5	-3.4
Base metals and articles of base metals.....	XV	4.999	181.4	179.6	-3.4	-1.3	-0.9	-0.1	-1.0
Iron and steel.....	72	1.141	215.3	215.3	-8.7	-0.5	-1.0	-0.7	0.0
Articles of iron or steel.....	73	1.502	155.9	154.8	-3.9	-0.6	-0.1	-0.3	-0.7
Copper and articles thereof.....	74	0.472	339.8	323.6	-3.3	-4.0	-2.9	2.3	-4.8
Nickel and articles thereof (Dec. 2009=100)...	75	0.135	91.4	87.7	-11.1	-4.2	-4.4	-4.5	-4.0
Aluminum and articles thereof.....	76	0.679	137.6	136.2	1.0	-1.8	-1.4	0.8	-1.0
Tools, implements, cutlery, spoons and forks, of base metal; parts thereof.....	82	0.389	129.4	129.1	0.7	-0.3	0.1	0.1	-0.2
Miscellaneous articles of base metal.....	83	0.434	135.7	135.3	-0.1	-0.1	0.0	-0.2	-0.3
Machinery, electrical equipment, TV image and sound recorders, parts, etc.....	XVI	26.584	85.0	84.9	-0.9	-0.2	-0.1	-0.1	-0.1
Machinery and mechanical appliances; parts thereof.....	84	13.758	89.7	89.8	0.0	-0.2	0.0	0.0	0.1
Electrical machinery and equip, sound and TV recorders & reproducers, parts.....	85	12.826	80.6	80.3	-1.8	-0.1	-0.2	-0.1	-0.4
Vehicles, aircraft, vessels and associated transport equipment.....	XVII	10.775	116.2	115.7	-0.3	-0.3	0.0	-0.2	-0.4
Motor vehicles and their parts.....	87	9.831	115.0	114.4	-0.6	-0.3	0.0	-0.2	-0.5
Aircraft, spacecraft, and parts thereof (Dec. 2002=100).....	88	0.875	120.0	120.1	1.2	0.0	-0.1	0.0	0.1
Optical, photo, measuring, medical & musical instruments; & timepieces.....	XVIII	3.359	103.7	104.0	-0.5	0.1	0.0	-0.1	0.3
Optical, photographic, measuring and medical instruments.....	90	3.048	100.7	100.9	-1.1	0.2	0.0	0.0	0.2
Clocks and watches and parts thereof.....	91	0.252	139.9	141.3	8.7	-0.9	-0.1	-0.6	1.0
Miscellaneous manufactured articles.....	XX	3.482	113.0	113.0	0.4	0.0	0.0	-0.1	0.0
Furniture & stuffed furnishings; lamps & lighting fittings, nesoi; prefab bldgs.....	94	1.944	116.8	116.8	0.3	0.0	0.1	-0.3	0.0
Toys, games and sports equipment; parts and accessories thereof.....	95	1.343	105.2	105.2	0.2	0.0	-0.1	0.1	0.0
Miscellaneous manufactured articles.....	96	0.195	138.3	138.4	1.2	0.0	-0.1	0.0	0.1

¹ Relative importance figures are based on 2011 trade values.

NOTES: Data may be revised in each of the three months after original publication.

Dash = Not available

Table 6. U.S. export price indexes and percent changes for selected categories of goods: July 2012 to July 2013

[2000=100, unless otherwise noted]

Description	Harmonized system	Relative importance June 2013 ¹	Index		Percent change				
			June 2013	July 2013	Annual July 2012 to July 2013	Monthly			
						Mar. 2013 to Apr. 2013	Apr. 2013 to May 2013	May 2013 to June 2013	June 2013 to July 2013
Live animals; animal products.....	I	2.042	214.7	217.7	8.4	0.6	-2.5	0.3	1.4
Meat & edible meat offal (Dec. 2006=100). . .	02	1.179	167.1	168.6	3.2	-0.2	-1.7	0.7	0.9
Fish and crustaceans, molluscs and other aquatic invertebrates.....	03	0.367	183.4	185.5	-10.3	-0.2	-6.9	-2.9	1.1
Vegetable products.....	II	5.420	271.7	267.9	-0.1	-4.5	2.6	1.4	-1.4
Edible fruit and nuts; peel of citrus fruit or melons.....	08	1.001	155.0	154.0	13.2	-3.8	4.8	-1.3	-0.6
Cereals.....	10	2.111	307.0	292.5	-5.7	-5.1	2.7	0.5	-4.7
Oilseeds and misc. grains, seeds, fruits, plants, straw and fodder.....	12	1.778	299.5	305.0	0.0	-5.4	2.4	4.4	1.8
Animal or vegetable fats and oils (Dec. 2009=100).....	III	0.303	132.2	131.1	-9.6	1.7	-0.7	-3.2	-0.8
Prepared foodstuffs, beverages, and tobacco.....	IV	3.015	167.1	167.1	5.0	-0.1	-0.5	0.7	0.0
Preparations of vegetables, fruit, nuts or other parts of plants (Dec. 2009=100).....	20	0.334	113.1	112.6	1.1	0.6	-0.2	0.0	-0.4
Beverages, spirits, and vinegar (Dec. 2008=100).....	22	0.610	113.2	113.3	3.2	-0.1	0.0	-0.1	0.1
Residues and waste from the food industries; prepared animal feed.....	23	0.749	268.1	275.0	10.9	0.4	-3.0	3.4	2.6
Mineral products.....	V	8.999	292.7	298.2	1.1	-3.2	-2.1	-0.1	1.9
Ores, slag and ash (Dec. 2012=100).....	26	0.454	92.9	91.5	-	-1.6	-2.8	-0.5	-1.5
Mineral fuels, oils and residuals, bituminous substances and mineral waxes.....	27	8.363	289.6	295.7	1.8	-3.4	-2.1	0.0	2.1
Products of the chemical or allied industries.....	VI	11.505	153.9	153.3	0.0	-0.1	0.1	-0.4	-0.4
Inorganic chemicals.....	28	1.035	185.8	185.8	0.6	0.8	1.2	-1.5	0.0
Organic chemicals.....	29	3.221	163.4	162.6	0.6	-0.8	-1.3	-0.7	-0.5
Pharmaceutical products.....	30	2.687	122.5	122.6	-1.0	-0.9	0.2	-0.2	0.1
Fertilizers (Dec. 2012=100).....	31	0.378	95.2	93.8	-	1.1	-1.9	-1.1	-1.5
Essential oils and resinoids; perfumery cosmetic or toilet preparations.....	33	0.727	138.5	138.5	1.2	-0.1	-0.1	0.0	0.0
Soap; lubricants; waxes, polishing or scouring products; candles, pastes.....	34	0.450	119.5	121.0	-1.7	0.3	-0.3	0.1	1.3
Miscellaneous chemical products.....	38	1.796	156.6	154.1	0.5	0.0	2.4	0.1	-1.6
Plastics and articles thereof; rubber and articles thereof.....	VII	5.297	149.8	149.2	2.5	0.1	-0.2	-0.2	-0.4
Plastics and articles thereof.....	39	4.263	142.5	142.4	4.5	0.2	-0.3	-0.2	-0.1
Rubber and articles thereof.....	40	1.034	183.0	179.8	-5.4	-0.1	-0.1	-0.2	-1.7
Raw hides, skins, leather, furskins, travel goods, etc.....	VIII	0.407	146.6	146.0	12.3	1.1	0.4	0.0	-0.4
Wood, wood charcoal, cork, straw, basketware and wickerwork.....	IX	0.585	113.3	114.0	3.6	1.2	-0.1	-0.2	0.6
Woodpulp, recovered paper, and paper products.....	X	2.286	122.6	123.1	4.7	0.6	0.4	0.6	0.4
Woodpulp and recovered paper.....	47	0.638	132.1	130.3	4.7	1.5	0.7	2.4	-1.4
Paper and paperboard; articles of paper pulp, paper or paperboard.....	48	1.198	119.0	120.4	3.2	0.1	0.3	0.0	1.2
Printed material.....	49	0.450	130.7	132.0	9.0	0.7	0.0	0.0	1.0
Textile and textile articles.....	XI	1.845	131.4	132.2	6.2	0.2	0.7	0.3	0.6
Cotton, including yarns and woven fabrics thereof.....	52	0.503	143.3	148.6	14.8	-0.3	0.6	-1.5	3.7
Stone, plaster, cement, asbestos, ceramics, glass etc.....	XIII	0.761	118.2	118.5	0.6	0.2	0.0	0.0	0.3

See footnotes at end of table.

Table 6. U.S. export price indexes and percent changes for selected categories of goods: July 2012 to July 2013 — Continued

[2000=100, unless otherwise noted]

Description	Harmonized system	Relative importance June 2013 ¹	Index		Percent change				
			June 2013	July 2013	Annual	Monthly			
					July 2012 to July 2013	Mar. 2013 to Apr. 2013	Apr. 2013 to May 2013	May 2013 to June 2013	June 2013 to July 2013
Glass and glassware.....	70	0.390	97.5	97.5	-0.9	0.1	0.0	0.0	0.0
Pearls, stones, precious metals, imitation jewelry, and coins.....	XIV	4.821	254.8	245.8	-10.6	-1.2	-4.5	-2.5	-3.5
Base metals and articles of base metals.....	XV	5.299	165.7	163.7	-4.7	-0.6	-1.7	0.1	-1.2
Iron and steel.....	72	1.466	186.4	182.3	-10.2	-1.3	-3.0	-0.2	-2.2
Articles of iron or steel.....	73	1.324	169.3	168.3	-3.0	0.3	-0.1	-0.4	-0.6
Copper and articles thereof.....	74	0.600	236.9	230.7	-6.2	-2.2	-5.9	2.6	-2.6
Aluminum and articles thereof.....	76	0.839	122.5	121.8	-1.5	-0.7	-0.9	-0.3	-0.6
Tools, implements, cutlery, spoons and forks, of base metal; parts thereof.....	82	0.405	132.7	132.7	0.8	0.8	0.1	-0.1	0.0
Miscellaneous articles of base metal.....	83	0.326	147.2	147.1	0.8	0.0	0.5	0.1	-0.1
Machinery, electrical equipment, TV image and sound recorders, parts, etc.....	XVI	27.992	97.2	97.4	0.4	-0.2	-0.2	0.1	0.2
Machinery and mechanical appliances; parts thereof.....	84	16.760	111.4	111.2	0.6	0.0	-0.1	0.1	-0.2
Electrical machinery and equipment and parts and accessories thereof.....	85	11.232	81.8	82.4	0.1	-0.6	-0.1	0.0	0.7
Vehicles, aircraft, vessels and associated transport equipment.....	XVII	12.022	127.9	128.2	0.9	0.2	-0.1	-0.1	0.2
Motor vehicles and their parts.....	87	8.148	113.7	114.0	0.7	0.2	-0.2	0.0	0.3
Optical, photo, measuring, medical & musical instruments; & timepieces.....	XVIII	5.908	107.1	107.2	1.1	-0.1	-0.2	0.1	0.1
Miscellaneous manufactured articles.....	XX	1.341	110.4	110.9	0.5	0.0	-0.2	-0.3	0.5
Furniture; stuffed furnishings; lamps and lighting fittings nesoi;.....	94	0.727	121.6	122.3	1.9	0.1	-0.2	0.5	0.6
Toys, games and sports equipment; parts and accessories thereof.....	95	0.506	89.6	89.7	-1.6	-0.1	-0.3	-1.1	0.1

¹ Relative importance figures are based on 2011 trade values.

NOTES: Data may be revised in each of the three months after original publication.

Dash = Not available

Table 7. U.S. import price indexes and percent changes by locality of origin: July 2012 to July 2013
 [2000=100, unless otherwise noted]

Description	Relative importance June 2013 ¹	Index		Percent change				
		June 2013	July 2013	Annual	Monthly			
				July 2012 to July 2013	Mar. 2013 to Apr. 2013	Apr. 2013 to May 2013	May 2013 to June 2013	June 2013 to July 2013
Industrialized Countries²	100.000	131.5	131.7	1.8	-0.2	-0.1	-0.5	0.2
Nonmanufactured articles.....	12.173	238.2	242.5	22.3	3.4	4.7	-1.1	1.8
Manufactured articles.....	87.249	122.9	122.9	-0.6	-0.6	-0.6	-0.6	0.0
Other Countries³	100.000	138.0	138.7	0.7	-1.1	-0.6	-0.3	0.5
Nonmanufactured articles.....	22.073	339.1	350.4	7.5	-4.1	-2.2	-0.9	3.3
Manufactured articles.....	77.581	110.2	109.9	-1.3	-0.4	-0.1	-0.1	-0.3
Canada	100.000	152.8	152.6	5.3	0.5	0.6	-0.5	-0.1
Nonmanufactured articles.....	30.298	228.2	232.3	24.2	3.8	4.7	-1.1	1.8
Manufactured articles.....	68.723	137.0	135.6	-1.4	-0.7	-1.1	-0.2	-1.0
European Union⁴	100.000	135.2	135.5	0.6	-0.1	-0.2	-0.1	0.2
Nonmanufactured articles.....	1.010	348.6	357.3	5.3	-3.3	-4.1	-0.3	2.5
Manufactured articles.....	98.813	131.6	131.8	0.4	-0.1	-0.2	-0.1	0.2
France (Dec. 2003=100)	100.000	121.7	121.8	1.3	-0.3	0.1	-0.1	0.1
Germany (Dec. 2003=100)	100.000	115.7	115.9	1.2	-0.1	0.0	-0.1	0.2
United Kingdom (Dec. 2003=100)	100.000	127.7	127.4	-3.5	-0.7	-0.3	0.0	-0.2
Latin America⁵	100.000	173.5	174.7	1.1	-1.9	-0.9	-0.2	0.7
Nonmanufactured articles.....	31.967	368.9	379.6	7.5	-3.7	-1.5	-0.5	2.9
Manufactured articles.....	67.644	131.2	130.8	-1.7	-1.1	-0.5	-0.1	-0.3
Mexico (Dec. 2003=100)	100.000	143.1	143.8	0.5	-1.2	-0.1	-0.8	0.5
Nonmanufactured articles (Dec. 2008=100).....	18.690	196.6	203.1	8.3	-4.3	-0.7	-3.4	3.3
Manufactured articles (Dec. 2008=100)....	80.979	93.9	93.8	-1.2	-0.3	0.0	-0.2	-0.1
Pacific Rim (Dec. 2003=100)⁶	100.000	103.3	103.0	-1.4	-0.1	-0.4	-0.1	-0.3
China (Dec. 2003=100)	100.000	103.5	103.4	-1.4	0.0	-0.6	0.0	-0.1
Japan	100.000	100.6	100.1	-2.4	-0.8	-0.4	-0.3	-0.5
Asian NICs⁷	100.000	91.3	90.9	0.1	1.1	0.2	0.1	-0.4
ASEAN (Dec. 2003=100)⁸	100.000	104.7	104.3	-0.5	0.6	0.2	0.0	-0.4
Asia Near East (Dec. 2003=100)⁹	100.000	258.6	265.6	3.5	-2.6	-2.4	-2.3	2.7

1 Relative figures are based on 2011 trade values.

2 Western Europe, Canada, Japan, Australia, New Zealand and South Africa.

3 Eastern Europe, Latin America, OPEC countries, and other countries in Asia, Africa and the Western Hemisphere.

4 European Union countries.

5 Mexico, Central America, South America and the Caribbean.

6 China, Japan, Australia, Brunei, Indonesia, Macao, Malaysia, New Zealand, Papua New Guinea, Philippines and the Asian Newly Industrialized Countries.

7 Asian Newly Industrialized Countries - Hong Kong, Singapore, South Korea and Taiwan.

8 Association of Southeast Asian Nations - Brunei, Cambodia, Indonesia, Laos, Malaysia, Myanmar, Philippines, Singapore, Thailand and Vietnam.

9 Bahrain, Iran, Iraq, Israel, Jordan, Kuwait, Lebanon, Oman, Qatar, Saudi Arabia, Syria, United Arab Emirates and Yemen.

NOTES: Data may be revised in each of the three months after original publication.

Regions are not mutually exclusive.

Dash = Not available

Table 8. U.S. international price indexes and percent changes for selected transportation services: July 2012 to July 2013

[2000=100, unless otherwise noted]

Description	Relative importance June 2013 ¹	Index		Percent change				
		June 2013	July 2013	Annual	Monthly			
				July 2012 to July 2013	Mar. 2013 to Apr. 2013	Apr. 2013 to May 2013	May 2013 to June 2013	June 2013 to July 2013
Air Freight								
Import Air Freight	100.000	171.8	172.4	-2.1	-1.1	-0.2	-0.3	0.3
Europe (Dec. 2003=100).....	21.931	163.6	165.0	4.7	-3.9	0.6	-0.2	0.9
Asia.....	73.691	151.5	151.9	-4.2	-0.4	-0.5	-0.3	0.3
Export Air Freight	100.000	146.3	146.2	1.0	0.3	-1.1	-0.9	-0.1
Europe (Dec. 2006=100).....	36.001	131.9	131.6	0.2	0.5	-1.0	-0.7	-0.2
Inbound Air Freight	100.000	160.6	160.7	-0.5	-0.5	-0.6	-0.8	0.1
Europe (Dec. 2003=100).....	22.092	147.8	148.2	2.5	-2.5	0.1	-0.4	0.3
Asia.....	67.255	145.5	145.6	-1.5	-0.1	-0.9	-1.0	0.1
Outbound Air Freight	100.000	145.4	145.0	0.1	0.1	-0.9	-1.3	-0.3
Europe (Dec. 2003=100).....	28.114	160.5	159.9	-1.9	-0.1	-0.2	-0.1	-0.4
Asia.....	52.204	138.4	138.1	1.2	0.1	-1.3	-1.8	-0.2
Air Passenger Fares								
Import Air Passenger Fares	100.000	205.6	197.5	2.1	0.3	2.0	10.7	-3.9
Europe.....	44.645	238.8	219.8	6.4	1.4	-0.4	14.6	-8.0
Asia.....	26.267	172.9	166.9	-0.2	1.9	3.2	11.4	-3.5
Latin America/Caribbean.....	8.726	173.2	175.8	-0.2	0.0	-1.7	5.0	1.5
Export Air Passenger Fares	100.000	193.8	196.7	-7.5	-2.6	5.2	2.1	1.5
Europe.....	31.681	258.0	262.1	2.1	-4.4	4.5	16.4	1.6
Asia.....	28.325	166.0	163.9	-11.2	-4.2	8.3	-0.3	-1.3
Latin America/Caribbean.....	19.565	180.4	191.5	-19.4	-3.5	-4.9	-1.0	6.2

¹ Relative importance figures are based on 2011 trade values.

NOTES: Data may be revised in each of the three months after original publication.

Dash = Not available

TECHNICAL NOTE

Import and Export Merchandise and Services Price Indexes -- All indexes use a modified Laspeyres formula and are not seasonally adjusted. Price indexes are reweighted annually, with a two-year lag in the weights. Published series use a base year of 2000=100 where possible. More detailed index series and additional information may be obtained at <http://www.bls.gov/mxp>, or by calling (202) 691-7101.

Merchandise Goods Classification Systems -- The merchandise price indexes are published using three classification systems. Items are classified by end use according to the Bureau of Economic Analysis Classification System, by industry according to the North American Industry Classification System (NAICS), and by product category according to the Harmonized System (HS). While classification by end use and product category are self-explanatory, some notes are in order for classifying items by industry. In the NAICS imports and exports tables, items are classified by output industry, not input industry. As an example, NAICS import index 326 (plastics and rubber products manufacturing) include outputs such as manufactured plastic rather than inputs such as petroleum. The NAICS classification structure also matches the classification system used by the PPI (Producer Price Index) to produce the NAICS primary products indexes.

Import Price Indexes -- Products have been classified by the Harmonized Tariff Schedule of the United States Annotated (TSUSA). Import prices are based on U.S. dollar prices paid by the U.S. importer. The prices are generally either "free on board" (f.o.b.) foreign port or "cost, insurance, and freight" (c.i.f.) U.S. port transaction prices, depending on the practices of the individual industry. The index for crude petroleum is calculated from data collected by the U.S. Department of Energy.

Export Price Indexes -- Products have been classified by the Harmonized Schedule B classification system of the U.S. Bureau of the Census. The prices used are generally either "free alongside ship" (f.a.s.) factory or "free on board" (f.o.b.) transaction prices, depending on the practices of the individual industry. Prices used in the grain index, excluding rice, are obtained from the U.S. Department of Agriculture.

Services Price Indexes -- Starting in September 2008 the Import Air Passenger Fares Indexes represent changes in the average revenue per passenger received by foreign carriers from U.S. residents and are calculated from data obtained from an airline consulting service. These data include tickets sold by travel agencies and travel websites. Tickets sold directly by the airlines are excluded, as are frequent flyer tickets generally. Starting in January 2008 the Export Air Passenger Fares Indexes represent changes in the average revenue per passenger received by U.S. carriers from foreign residents and are calculated from data collected directly from airlines. These data include frequent flyer tickets and those sold by consolidators. Taxes and fees are included in the Import Air Passenger Fares Index and excluded from the Export Air Passenger Fares Index. The Air Freight Indexes are calculated from data collected directly from airlines. These data exclude mail and passenger baggage. The scope of the service being priced is the movement of freight from airport to airport only, and does not include any ground transportation or port service. The Air Freight Indexes are presented using two definitions: Balance of Payments (which represent transactions between U.S. and foreign residents) and International (which represent transactions inbound to and outbound from the U.S.). Fact sheets specifying detailed information for each services industry are available at <http://www.bls.gov/mxp> under "MXP Publications."

Import Indexes by Locality of Origin -- Prices used in these indexes are a subset of the data collected for the Import Price Indexes. Beginning with January 2002, the indexes are defined by locality of origin using a nomenclature based upon the North American Industry Classification System (NAICS). Nonmanufactured goods are defined as NAICS 11 and 21 and manufactured goods are defined as NAICS 31-33.

Revision Policy -- To reflect the availability of late reports and corrections by respondents, monthly data may be revised in each of the three months after original publication. After three months, no further data revisions take place. So, for example, data released in the January release will be subject to revision in the releases for February, March, and April.

Uses of the Data -- The primary use of the indexes is to deflate trade statistics, notably the foreign trade sector of the National Income and Product Accounts constructed by the Department of Commerce. Other published indexes are useful for general market analysis. For trade in international services, Balance of Payments indexes are used for deflating National Income and Product Accounts, while International indexes are more appropriate for market analysis. Merchandise and services indexes also can be used to study U.S. competitiveness and to compute price elasticities, and the merchandise import indexes by country or region of origin are useful in terms of trade analysis.

E-Mail Subscription -- The U.S. Import and Export Price Indexes news release is available through an e-mail subscription service at (<http://www.bls.gov/bls/list.htm>).

Additional Information -- More detailed data are available on the Import/Export Price Indexes home page at (<http://www.bls.gov/mxp>). Flat Files and the FTP server are available for users requiring access to either a large volume of time series data or other related documentation. The FTP site can be accessed at <ftp://ftp.bls.gov>. For technical assistance in using the BLS Internet site, send e-mail to (labstat.helpdesk@bls.gov). For Import/Export Price Index data requests, send e-mail to (mxpinfo@bls.gov).

Information from this release will be made available to sensory impaired individuals upon request. Voice phone: 202-691-5200; Federal Relay Service: 1-800-877-8339.