

Transmission of material in this release is embargoed until  
8:30 a.m. (EDT) Wednesday, May 13, 2015

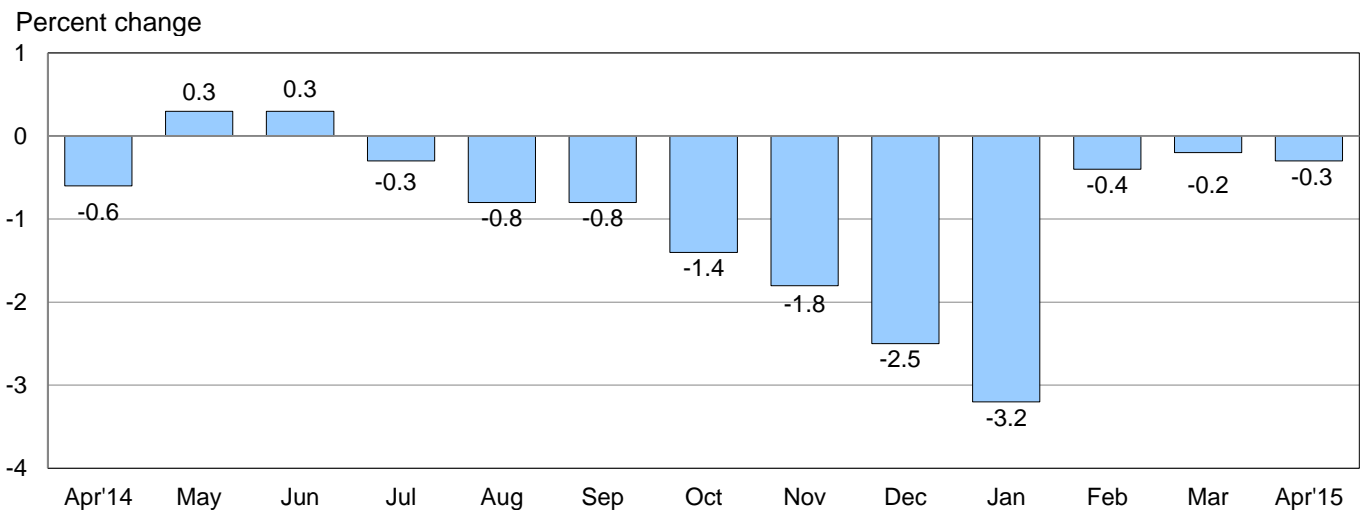
USDL-15-0889

Technical information: (202) 691-7101 • [MXPinfo@bls.gov](mailto:MXPinfo@bls.gov) • [www.bls.gov/mxp](http://www.bls.gov/mxp)  
Media contact: (202) 691-5902 • [PressOffice@bls.gov](mailto:PressOffice@bls.gov)

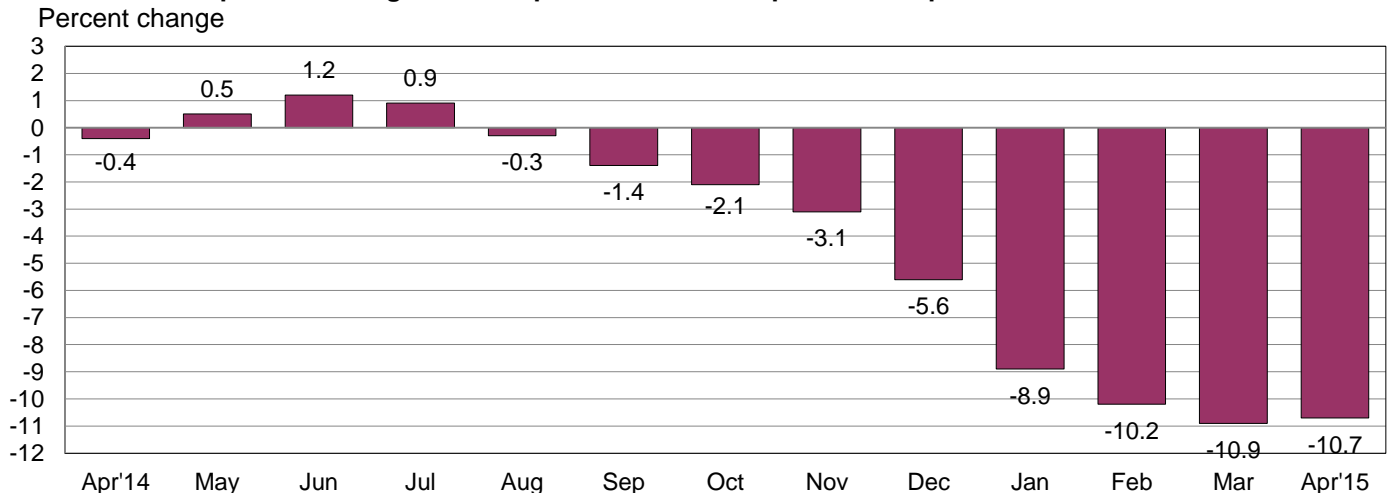
### U.S. IMPORT AND EXPORT PRICE INDEXES – APRIL 2015

U.S. import prices declined 0.3 percent in April, after decreasing 0.2 percent in March and 0.4 percent in February, the U.S. Bureau of Labor Statistics reported today. Falling nonfuel prices in April more than offset higher fuel prices. Prices for U.S. exports fell 0.7 percent in April following a 0.1-percent rise the previous month.

**Chart 1. One-month percent change in the Import Price Index: April 2014 – April 2015**



**Chart 2. 12-month percent change in the Import Price Index: April 2014 – April 2015**



**All Imports:** Prices for U.S. imports declined 0.3 percent in March, and have not recorded a monthly advance since the index rose 0.3 percent in June 2014. Overall, import prices fell 11.2 percent between June 2014 and April 2015, and the index decreased 10.7 percent over the past year. Most of the decline since June 2014 resulted from lower fuel prices, as nonfuel prices declined 2.2 percent over the period.

**Fuel Imports:** The price index for import fuel increased 0.7 percent in April, after rising 1.2 percent the previous month. The March advance was the first monthly increase in fuel prices since the index rose 1.6 percent in June 2014. In April, a 1.0-percent advance in petroleum prices more than offset a 7.0-percent drop in natural gas prices. Despite the recent increases, fuel prices declined 46.1 percent for the year ended in April. Both a 47.0-percent decrease in petroleum prices and a 45.2-percent drop in natural gas prices contributed to the overall year-over-year decline in fuel prices.

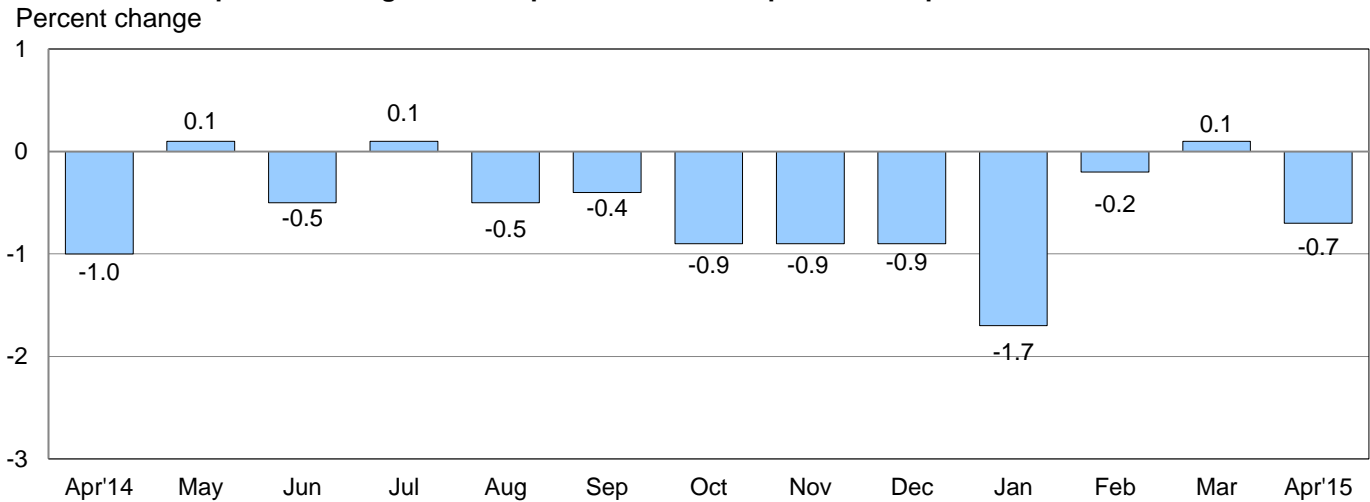
**All Imports Excluding Fuel:** Nonfuel import prices declined 0.4 percent for the second consecutive month in April. Prices for nonfuel imports last recorded a monthly advance when the index edged up 0.1 percent in July 2014. In April, lower prices for nonfuel industrial supplies and materials; capital goods; foods, feeds, and beverages; and consumer goods all contributed to the decline in nonfuel prices. The price index for automotive vehicles recorded no change. The price index for nonfuel imports declined 2.3 percent over the past 12 months. Each of the major finished goods categories decreased over that period.

**Table A. Percent change in Import and Export Price Indexes, selected categories**

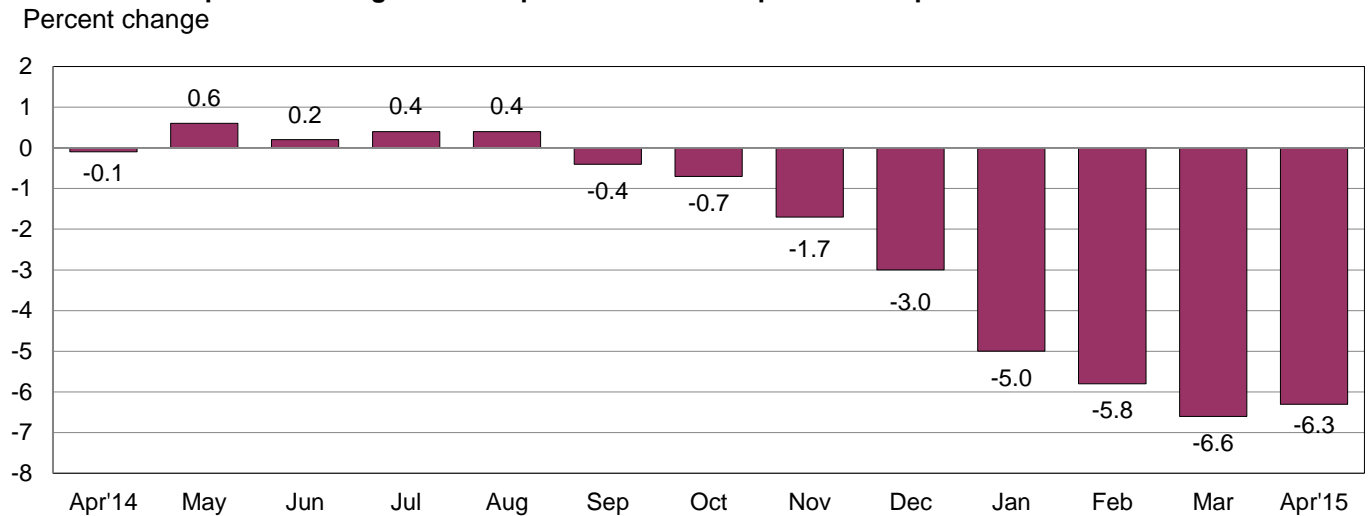
Month	IMPORTS			EXPORTS		
	All imports	Fuel imports	Nonfuel imports	All exports	Agricultural exports	Non-agricultural exports
<b>2014</b>						
April.....	-0.6	-2.6	0.0	-1.0	1.5	-1.2
May.....	0.3	1.2	0.0	0.1	0.3	0.0
June.....	0.3	1.6	-0.1	-0.5	-1.9	-0.3
July.....	-0.3	-1.5	0.1	0.1	-1.8	0.2
August.....	-0.8	-3.8	0.0	-0.5	-3.1	-0.2
September.....	-0.8	-3.6	-0.2	-0.4	-1.6	-0.2
October.....	-1.4	-6.8	-0.1	-0.9	-2.2	-0.7
November.....	-1.8	-9.3	-0.3	-0.9	0.1	-1.0
December.....	-2.5	-15.0	-0.1	-0.9	-0.7	-1.0
<b>2015</b>						
January.....	-3.2	-20.1	-0.7	-1.7 <sup>r</sup>	-1.4 <sup>r</sup>	-1.8 <sup>r</sup>
February.....	-0.4 <sup>r</sup>	-2.0 <sup>r</sup>	-0.2 <sup>r</sup>	-0.2	-2.1	0.1
March.....	-0.2 <sup>r</sup>	1.2 <sup>r</sup>	-0.4	0.1	-1.7	0.2
April.....	-0.3	0.7	-0.4	-0.7	-0.8	-0.7
Apr. 2013 to 2014.....	-0.4	0.8	-0.6	-0.1	2.2	-0.2
Apr. 2014 to 2015.....	-10.7	-46.1	-2.3	-6.3	-15.6	-5.3

r Revised

**Chart 3. One-month percent change in the Export Price Index: April 2014 – April 2015**



**Chart 4. 12-month percent change in the Export Price Index: April 2014 – April 2015**



**All Exports:** U.S. export prices fell 0.7 percent in April, the largest 1-month drop since a 1.7-percent decline in January. The April drop followed a 0.1-percent rise in March which was the first monthly advance since a 0.1-percent increase in July 2014. Lower prices in April for both agricultural exports and nonagricultural exports contributed to the overall drop in export prices. The price index for exports declined 6.3 percent over the past year.

**Agricultural Exports:** Agricultural export prices decreased 0.8 percent in April, after falling 1.7 percent in March. The April drop was driven by a 2.4-percent decline in meat prices, a 1.7-percent decrease in soybean prices, and a 2.7-percent fall in fruit prices. The price index for agricultural exports has not recorded a monthly advance since the index ticked up 0.1 percent in November 2014. The index decreased 15.6 percent for the year ended in April, the largest 12-month decline since the index fell 16.7 percent between September 2008 and September 2009.

**All Exports Excluding Agriculture:** The price index for nonagricultural exports declined 0.7 percent in April following advances of 0.2-percent and 0.1-percent the previous 2 months. The April decline was led by declining prices for nonagricultural industrial supplies and materials, capital goods, and consumer goods. In contrast, prices for automotive vehicles ticked up 0.1 percent in April. Nonagricultural export prices decreased 5.3 percent over the past 12 months.

## SELECTED APRIL HIGHLIGHTS

### Import Prices

**Imports by Locality of Origin:** Import prices from China edged down 0.1 percent for the third consecutive month in April. Prices for imports from China also declined over the past year, falling 0.6 percent, the largest year-over-year drop since the index fell 0.7 percent for the year ended January 2014. The price index for imports from Japan decreased 0.5 percent in April, and has not recorded a monthly advance since the index rose 0.2 percent in March 2014. Import prices from the European Union and Canada also declined in April, falling 0.5 percent and 0.1 percent, respectively. In contrast, prices for imports from Mexico advanced 0.2 percent in April.

**Nonfuel Industrial Supplies and Materials:** The price index for nonfuel industrial supplies and materials decreased 0.9 percent in April following a 1.3-percent decline the previous month. The April drop was driven by a 6.4-percent decrease in iron and steel mill products and a 0.7-percent decline in chemical prices.

**Finished Goods:** Prices for the major finished goods categories were mostly down in April. The price index for capital goods fell 0.3 percent, led by lower prices for computers, peripherals, and semiconductors as well as industrial and service machinery. Consumer goods prices also fell in April, edging down 0.1 percent. Prices for automotive vehicles recorded no change in April.

**Foods, Feeds, and Beverages:** Foods, feeds, and beverages prices fell 0.9 percent in April, after declining 0.7 percent in March. Lower prices for fish and shellfish, food oils, and vegetables contributed to the April decrease.

**Transportation Services:** Import air passenger fares fell 2.9 percent in April following a 2.4-percent decrease in March and a 2.5-percent decline in February. Lower European fares drove the drops in April and March, and falling Asian fares led the decrease in February. The index for import air passenger fares declined 2.7 percent for the year ended in April. Import air freight prices rose 0.5 percent in April and decreased 1.1 percent over the past year.

### Export Prices

**Nonagricultural Industrial Supplies and Materials:** The price index for nonagricultural industrial supplies and materials declined 1.6 percent in April, after rising 0.5 percent the previous month. The April decrease was driven by falling fuel prices, which decreased 5.6 percent in April following a 4.0-percent increase in March.

**Finished Goods:** Prices for both capital goods and consumer goods declined 0.3 percent in April, after recording little change the previous month. In March, prices for capital goods were unchanged and consumer goods prices edged down 0.1 percent. The price index for automotive vehicles ticked up 0.1 percent for the second consecutive month in April.

**Transportation Services:** Export air passenger fares fell 3.6 percent in April, after rising 0.9 percent the previous month. Lower Latin American/Caribbean fares, Asian fares, and European fares all contributed to the April decline. The index for export air passenger fares declined 13.3 percent over the past year. Prices for export air freight rose 0.9 percent in April and increased 4.6 percent over the past 12 months.

---

**Import and Export Price Index data for May 2015 are scheduled for release on Thursday, June 11, 2015 at 8:30 a.m. (EDT).**

**Table 1. U.S. import price indexes and percent changes for selected categories of goods: April 2014 to April 2015**

[2000=100, unless otherwise noted]

Description	End Use	Relative importance Mar. 2015 <sup>1</sup>	Index		Percent change				
			Mar. 2015	Apr. 2015	Annual Apr. 2014 to Apr. 2015	Monthly			
						Dec. 2014 to Jan. 2015	Jan. 2015 to Feb. 2015	Feb. 2015 to Mar. 2015	Mar. 2015 to Apr. 2015
<b>All commodities</b> .....		100.000	125.2	124.8	-10.7	-3.2	-0.4	-0.2	-0.3
<b>All imports excluding food and fuels (Dec. 2010=100)</b> .....		83.283	100.4	100.0	-2.2	-0.6	-0.2	-0.4	-0.4
<b>All imports excluding petroleum</b> .....		90.119	113.5	113.0	-2.7	-0.7	-0.3	-0.4	-0.4
<b>All imports excluding fuels (Dec. 2001=100)</b> .....		89.301	117.5	117.0	-2.3	-0.7	-0.2	-0.4	-0.4
<b>Foods, feeds, &amp; beverages</b> .....	0	6.018	178.0	176.4	-2.4	-1.7	0.1	-0.7	-0.9
Agricultural foods, feeds & beverages, excluding distilled beverages.....	00	4.660	196.0	194.5	-1.6	-1.9	-0.1	-0.7	-0.8
Nonagricultural foods (fish, distilled beverages).....	01	1.358	137.1	135.5	-5.0	-0.7	0.8	-0.7	-1.2
<b>Industrial supplies &amp; materials</b> .....	1	24.363	175.6	175.3	-30.1	-10.4	-1.4	-0.3	-0.2
Industrial supplies & materials excluding petroleum.....		14.482	151.0	149.4	-8.6	-1.6	-1.5	-1.5	-1.1
Industrial supplies & materials excluding fuels (Dec. 2001=100).....		13.664	170.6	169.0	-6.5	-1.3	-1.0	-1.3	-0.9
Industrial supplies & materials, durable....		8.110	158.3	156.5	-6.9	-0.9	-0.9	-1.7	-1.1
Industrial supplies & materials nondurable excluding petroleum.....		5.553	141.8	140.5	-10.6	-2.5	-2.1	-1.3	-0.9
Fuels & lubricants.....	10	10.699	182.3	183.6	-46.1	-20.1	-2.0	1.2	0.7
Petroleum & petroleum products.....	100	9.881	196.4	198.4	-47.0	-21.2	-1.4	1.6	1.0
Crude.....	10000	6.860	191.4	199.6	-48.8	-21.5	-1.8	-0.2	4.3
Fuels, n.e.s.-coals & gas.....	101	0.616	108.9	103.3	-38.3	-7.6	-9.9	-5.6	-5.1
Gas-natural.....	10110	0.456	93.9	87.3	-45.2	-9.0	-12.7	-7.0	-7.0
Paper & paper base stocks.....	11	0.599	111.7	111.2	-1.2	-0.6	-0.2	-0.2	-0.4
Materials associated with nondurable supplies & materials.....	12	5.026	161.4	160.4	-6.4	-2.0	-1.2	-0.8	-0.6
Selected building materials.....	13	1.214	138.4	137.2	-3.4	0.1	-0.7	-1.0	-0.9
Unfinished metals related to durable goods.....	14	3.425	214.8	210.6	-12.4	-1.9	-1.3	-3.1	-2.0
Finished metals related to durable goods.....	15	1.718	154.1	153.9	-1.7	-0.8	-0.7	-0.3	-0.1
Nonmetals related to durable goods.....	16	1.682	110.1	109.5	-1.9	0.2	-0.5	-0.9	-0.5
<b>Capital goods</b> .....	2	27.630	91.3	91.0	-1.3	-0.3	-0.3	-0.2	-0.3
Electric generating equipment.....	20	3.383	119.2	118.4	-0.8	-0.3	-0.2	-0.3	-0.7
Nonelectrical machinery.....	21	21.830	83.9	83.5	-1.6	-0.4	-0.4	-0.1	-0.5
Transportation equipment excluding motor vehicles (Dec. 2001=100).....	22	2.417	136.3	136.3	0.2	0.1	0.0	-0.4	0.0
<b>Automotive vehicles, parts &amp; engines</b> .....	3	15.315	111.2	111.2	-1.9	-0.7	-0.4	-0.2	0.0
<b>Consumer goods, excluding automobiles</b> .....	4	26.674	107.5	107.4	-0.8	-0.4	0.3	-0.3	-0.1
Nondurables, manufactured.....	40	12.698	119.1	119.0	0.8	-0.3	0.1	0.2	-0.1
Durables, manufactured.....	41	12.500	96.0	95.8	-2.1	-0.4	0.1	-0.2	-0.2
Nonmanufactured consumer goods.....	42	1.476	118.0	118.2	-2.9	0.0	2.7	-3.5	0.2

<sup>1</sup> Relative importance figures are based on 2013 trade values.

NOTES: Data may be revised in each of the three months after original publication.

Dash = Not available

**Table 2. U.S. export price indexes and percent changes for selected categories of goods: April 2014 to April 2015**

[2000=100, unless otherwise noted]

Description	End Use	Relative importance Mar. 2015 <sup>1</sup>	Index		Percent change				
			Mar. 2015	Apr. 2015	Annual Apr. 2014 to Apr. 2015	Monthly			
						Dec. 2014 to Jan. 2015	Jan. 2015 to Feb. 2015	Feb. 2015 to Mar. 2015	Mar. 2015 to Apr. 2015
<b>All commodities.....</b>		100.000	126.0	125.1	-6.3	-1.7	-0.2	0.1	-0.7
<b>Agricultural commodities.....</b>		9.074	191.5	190.0	-15.6	-1.4	-2.1	-1.7	-0.8
<b>All exports excluding food and fuels (Dec. 2010=100).....</b>		83.498	100.8	100.6	-1.9	-0.2	-0.2	-0.2	-0.2
<b>Nonagricultural commodities.....</b>		90.927	121.1	120.3	-5.3	-1.8	0.1	0.2	-0.7
<b>Foods, feeds, &amp; beverages.....</b>	0	8.437	193.5	191.9	-14.7	-1.8	-2.2	-1.3	-0.8
Agricultural foods, feeds & beverages, excluding distilled beverages.....	00	7.686	192.8	191.2	-16.4	-2.1	-2.3	-2.2	-0.8
Nonagricultural foods (fish, distilled beverages).....	01	0.751	210.0	208.5	8.7	2.4	-0.5	8.5	-0.7
<b>Industrial supplies &amp; materials.....</b>	1	31.255	155.9	153.6	-14.2	-4.9	0.3	0.5	-1.5
Industrial supplies & materials, durable....		11.064	161.5	161.1	-6.4	-0.4	-0.7	-1.1	-0.2
Industrial supplies & materials, nondurable.....		20.193	153.8	150.4	-18.1	-7.3	0.9	1.5	-2.2
Agricultural industrial supplies & materials.....	10	1.388	188.6	188.3	-10.0	3.0	-0.7	1.0	-0.2
<b>Nonagricultural industrial supplies &amp; materials.....</b>		29.868	154.9	152.4	-14.4	-5.2	0.4	0.5	-1.6
Fuels & lubricants.....	11	8.066	184.1	173.8	-33.3	-16.5	3.8	4.0	-5.6
Nonagricultural supplies & materials excluding fuels & building materials.....	12	20.796	158.0	157.9	-5.5	-0.8	-0.7	-0.8	-0.1
Selected building materials.....	13	1.006	119.2	118.7	-8.1	0.0	-1.2	-0.5	-0.4
<b>Capital goods.....</b>	2	37.762	107.8	107.5	0.3	0.2	0.2	0.0	-0.3
Electrical generating equipment.....	20	3.816	114.8	114.5	-0.4	-0.3	-0.2	0.0	-0.3
Nonelectrical machinery.....	21	25.866	95.5	95.1	-0.4	0.2	0.0	-0.1	-0.4
Transportation equipment excluding motor vehicles (Dec. 2001=100).....	22	8.080	160.7	160.9	3.0	0.5	0.8	0.2	0.1
<b>Automotive vehicles, parts &amp; engines.....</b>	3	10.112	113.9	114.0	0.1	-0.1	-0.2	0.1	0.1
<b>Consumer goods, excluding automotives.....</b>	4	12.434	112.9	112.6	-2.2	-0.7	-0.4	-0.1	-0.3
Nondurables, manufactured.....	40	5.522	108.8	108.5	-2.3	-1.2	-1.2	-0.2	-0.3
Durables, manufactured.....	41	5.306	110.9	110.5	-1.6	-0.4	0.0	0.2	-0.4

<sup>1</sup> Relative importance figures are based on 2013 trade values.

NOTES: Data may be revised in each of the three months after original publication.

Dash = Not available

**Table 3. U.S. import price indexes and percent changes for selected categories of goods: April 2014 to April 2015**

[December 2005=100, unless otherwise noted]

Description	NAICS	Relative importance Mar. 2015 <sup>1</sup>	Index		Percent change				
			Mar. 2015	Apr. 2015	Annual	Monthly			
					Apr. 2014 to Apr. 2015	Dec. 2014 to Jan. 2015	Jan. 2015 to Feb. 2015	Feb. 2015 to Mar. 2015	Mar. 2015 to Apr. 2015
<b>Nonmanufactured articles.....</b>		9.671	95.9	98.0	-43.4	-17.3	-2.0	-0.6	2.2
<b>Agriculture, forestry, fishing and hunting.....</b>	11	2.037	175.4	175.6	-7.9	-4.1	0.1	-1.4	0.1
Crop production.....	111	1.617	183.7	184.4	-7.9	-5.1	0.8	-2.2	0.4
Animal production (Dec. 2014=100).....	112	0.229	93.6	93.9	—	-2.5	-4.1	0.1	0.3
Forestry and logging (Dec. 2012=100).....	113	0.113	65.8	64.4	-23.2	0.4	-1.6	-2.2	-2.1
<b>Mining.....</b>	21	7.634	86.4	88.7	-48.1	-20.2	-2.5	-0.5	2.7
Mining (except oil and gas) (Dec. 2006=100).....	212	0.243	115.9	102.0	-18.7	-1.8	-0.3	0.4	-12.0
<b>Manufactured articles.....</b>		90.014	112.3	111.7	-4.0	-1.3	-0.3	-0.2	-0.5
<b>Manufactured goods, part 1.....</b>	31	12.006	125.2	124.7	-0.6	-0.3	0.1	-0.5	-0.4
Food manufacturing.....	311	3.361	155.4	154.1	-3.6	-0.9	0.3	-2.0	-0.8
Beverage and tobacco product manufacturing.....	312	1.087	118.0	117.6	1.7	0.3	-0.2	0.5	-0.3
Textile mills (Dec. 2011=100).....	313	0.407	102.0	100.9	-1.2	-0.4	-0.4	-0.3	-1.1
Textile product mills.....	314	0.890	112.9	112.6	-1.6	-0.1	-0.4	-0.3	-0.3
Apparel manufacturing.....	315	4.367	112.2	112.1	1.1	-0.1	0.0	0.2	-0.1
Leather and allied product manufacturing.....	316	1.893	124.2	124.3	0.8	0.1	0.2	-0.1	0.1
<b>Manufactured goods, part 2.....</b>	32	17.637	123.5	121.9	-11.3	-4.7	-0.3	0.7	-1.3
Wood product manufacturing.....	321	0.728	116.4	114.9	-5.4	0.3	-1.2	-1.9	-1.3
Paper manufacturing.....	322	1.111	109.6	109.1	-0.9	-0.4	-0.2	-0.9	-0.5
Petroleum and coal products manufacturing.....	324	2.840	99.4	93.5	-40.8	-20.4	-0.1	6.0	-5.9
Chemical manufacturing.....	325	9.581	134.5	134.2	-2.5	-1.6	-0.4	-0.1	-0.2
Plastics and rubber products manufacturing.....	326	2.197	120.2	119.4	-3.0	-0.7	-0.6	-0.2	-0.7
Nonmetallic mineral product manufacturing.....	327	0.972	130.2	130.1	-0.2	-0.1	0.1	0.1	-0.1
<b>Manufactured goods, part 3.....</b>	33	60.371	105.9	105.5	-2.3	-0.5	-0.3	-0.4	-0.4
Primary metal manufacturing.....	331	4.133	143.8	141.1	-10.3	-1.8	-1.0	-2.9	-1.9
Fabricated metal product manufacturing.....	332	3.018	126.3	126.2	-0.4	-0.2	-0.5	-0.2	-0.1
Machinery manufacturing.....	333	7.214	119.2	118.5	-2.4	-0.2	-0.5	-0.1	-0.6
Computer and electronic product manufacturing.....	334	17.760	78.5	78.3	-2.1	-0.5	-0.3	-0.1	-0.3
Electrical equipment, appliance, and component manufacturing.....	335	4.730	118.6	117.7	-0.7	-0.3	0.0	-0.1	-0.8
Transportation equipment manufacturing.....	336	16.440	110.2	110.2	-1.5	-0.5	-0.3	-0.2	0.0
Furniture and related product manufacturing.....	337	1.579	116.1	115.9	0.6	0.1	-0.1	0.0	-0.2
Miscellaneous manufacturing.....	339	5.497	120.5	120.4	-1.3	-0.2	0.0	-0.4	-0.1

<sup>1</sup> Relative importance figures are based on 2013 trade values.

NOTES: Data may be revised in each of the three months after original publication.

Dash = Not available

**Table 4. U.S. export price indexes and percent changes for selected categories of goods: April 2014 to April 2015**

[December 2005=100, unless otherwise noted]

Description	NAICS	Relative importance Mar. 2015 <sup>1</sup>	Index		Percent change				
			Mar. 2015	Apr. 2015	Annual	Monthly			
					Apr. 2014 to Apr. 2015	Dec. 2014 to Jan. 2015	Jan. 2015 to Feb. 2015	Feb. 2015 to Mar. 2015	Mar. 2015 to Apr. 2015
<b>Nonmanufactured articles.....</b>		6.617	138.4	135.2	-19.8	-4.1	-4.0	2.1	-2.3
<b>Agriculture, forestry, fishing and hunting.....</b>	11	4.278	167.9	168.7	-17.7	0.0	-3.0	0.5	0.5
Crop production.....	111	4.011	172.8	174.0	-18.0	-0.2	-3.0	-0.2	0.7
<b>Mining.....</b>	21	2.339	79.6	73.7	-22.5	-10.8	-5.9	5.3	-7.4
Mining (except oil and gas).....	212	1.230	91.3	89.9	-9.0	-2.2	-1.6	-0.1	-1.5
<b>Manufactured articles.....</b>		91.832	115.4	114.7	-5.0	-1.5	0.2	-0.1	-0.6
<b>Manufactured goods, part 1.....</b>	31	7.128	144.8	143.3	-8.8	-1.7	-1.1	-1.8	-1.0
Food manufacturing.....	311	4.895	164.2	161.8	-10.9	-2.4	-1.6	-2.6	-1.5
Beverage and tobacco product manufacturing.....	312	0.612	117.2	118.9	-4.3	1.6	1.0	0.9	1.5
<b>Manufactured goods, part 2.....</b>	32	24.393	115.5	113.8	-13.8	-5.6	0.6	0.8	-1.5
Paper manufacturing.....	322	1.860	123.9	123.7	-1.1	-1.1	-0.4	-0.2	-0.2
Petroleum and coal products manufacturing.....	324	5.547	109.4	102.3	-38.0	-19.0	6.5	4.4	-6.5
Chemical manufacturing.....	325	13.137	120.3	120.5	-5.7	-1.9	-1.2	-0.4	0.2
Plastics and rubber products manufacturing.....	326	2.239	119.3	118.8	-0.1	0.8	-0.1	0.1	-0.4
Nonmetallic mineral product manufacturing.....	327	0.815	112.6	112.4	-0.6	0.2	0.3	-0.1	-0.2
<b>Manufactured goods, part 3.....</b>	33	60.312	112.6	112.3	-0.5	0.2	0.2	-0.2	-0.3
Primary metal manufacturing.....	331	4.795	141.9	141.3	-6.0	0.1	1.5	-2.1	-0.4
Fabricated metal product manufacturing.....	332	2.979	129.3	129.2	1.2	0.8	0.2	-0.2	-0.1
Machinery manufacturing.....	333	11.375	125.0	125.1	1.3	0.3	0.1	0.1	0.1
Computer and electronic product manufacturing.....	334	14.240	86.6	85.9	-2.3	0.0	0.0	-0.3	-0.8
Electrical equipment, appliance, and component manufacturing.....	335	3.712	114.7	115.0	0.3	0.1	0.0	0.0	0.3
Transportation equipment manufacturing..	336	17.289	121.3	121.4	1.3	0.1	0.2	0.2	0.1
Furniture and related product manufacturing (Dec. 2011=100).....	337	0.372	107.7	108.6	0.8	0.6	-0.1	-2.3	0.8
Miscellaneous manufacturing.....	339	5.550	123.6	123.1	-2.0	-0.5	0.0	0.1	-0.4

<sup>1</sup> Relative importance figures are based on 2013 trade values.

NOTES: Data may be revised in each of the three months after original publication.

Dash = Not available



**Table 5. U.S. import price indexes and percent changes for selected categories of goods: April 2014 to April 2015**

[2000=100, unless otherwise noted]

Description	Harmonized system	Relative importance Mar. 2015 <sup>1</sup>	Index		Percent change				
			Mar. 2015	Apr. 2015	Annual Apr. 2014 to Apr. 2015	Monthly			
						Dec. 2014 to Jan. 2015	Jan. 2015 to Feb. 2015	Feb. 2015 to Mar. 2015	Mar. 2015 to Apr. 2015
<b>Live animals; animal products.....</b>	I	1.382	191.7	189.9	-5.6	-1.5	0.2	-1.9	-0.9
Meat and edible meat offal.....	02	0.321	239.6	237.4	-4.1	-2.2	2.1	-5.9	-0.9
Fish and crustaceans, molluscs and other aquatic invertebrates.....	03	0.718	135.8	133.7	-9.5	-0.8	1.2	-1.2	-1.5
<b>Vegetable products.....</b>	II	1.942	199.7	197.1	-6.2	-5.7	1.0	-1.6	-1.3
Edible vegetables, roots, and tubers.....	07	0.506	427.0	408.1	15.2	-20.4	1.8	8.9	-4.4
Edible fruit and nuts; peel of citrus fruit or melons.....	08	0.505	100.0	99.7	-21.6	3.9	0.3	-1.6	-0.3
Coffee, tea, mate and spices.....	09	0.378	245.0	243.6	2.3	1.7	-3.0	-4.6	-0.6
<b>Animal or vegetable fats and oils (Dec. 2009=100).....</b>	III	0.277	108.0	103.6	-10.5	1.3	-2.2	-0.1	-4.1
<b>Prepared foodstuffs, beverages, and tobacco.....</b>	IV	2.816	161.8	161.6	0.8	-0.1	0.4	-0.7	-0.1
Sugars and sugar confectionary (Dec. 2012=100).....	17	0.188	91.7	91.1	3.9	-0.2	0.4	-0.2	-0.7
Cocoa and cocoa preparations (Dec. 2009=100).....	18	0.245	108.5	108.6	0.2	2.1	0.4	-3.8	0.1
Preparations of cereals, flour, starch or milk; bakers' wares (Dec. 2007=100).....	19	0.280	132.5	132.2	0.7	-0.1	-0.5	-0.2	-0.2
Preparations of vegetables, fruit, nuts, or other parts of plants.....	20	0.342	162.2	161.1	-4.1	-1.0	-0.6	-1.5	-0.7
Beverages, spirits, and vinegar.....	22	1.056	128.1	127.6	1.3	0.1	-0.3	0.5	-0.4
<b>Mineral products.....</b>	V	10.619	183.4	184.1	-46.3	-20.0	-1.9	1.2	0.4
Mineral fuels, oils and residuals, bituminous substances and mineral waxes.....	27	10.356	180.1	181.3	-46.7	-20.4	-2.0	1.2	0.7
<b>Products of the chemical or allied industries.....</b>	VI	8.716	148.3	148.5	-2.8	-2.0	-0.5	-0.1	0.1
Inorganic chemicals.....	28	0.673	301.2	304.3	-5.4	-5.8	-3.8	-1.8	1.0
Organic chemicals.....	29	2.458	123.2	123.8	-9.5	-5.5	-1.0	0.0	0.5
Pharmaceutical products.....	30	3.497	136.3	136.2	2.5	0.7	0.4	0.1	-0.1
Fertilizers (Dec. 2009=100).....	31	0.395	114.0	111.0	-1.2	-0.3	-0.4	-0.5	-2.6
Tanning extracts; dye, pigments, varnish, paints & putty (Dec. 2011=100).....	32	0.207	100.0	100.1	-1.7	-0.9	0.1	-4.3	0.1
Miscellaneous chemical products.....	38	0.552	90.2	90.8	-3.2	-1.1	-0.6	0.0	0.7
<b>Plastics and articles thereof; rubber and articles thereof.....</b>	VII	3.449	143.6	142.4	-4.0	-0.7	-0.4	-0.5	-0.8
Plastics and articles thereof.....	39	2.249	148.2	147.3	-1.6	0.0	-0.3	-0.5	-0.6
Rubber and articles thereof.....	40	1.200	136.9	135.5	-8.3	-2.0	-0.8	-0.6	-1.0
<b>Raw hides, skins, leather, furskins, travel goods, etc.....</b>	VIII	0.723	128.2	128.1	-0.1	0.2	0.0	0.0	-0.1
Articles of leather; travel goods, bags, etc. of various materials.....	42	0.682	130.6	130.5	0.6	0.2	0.0	0.0	-0.1
<b>Wood, wood charcoal, cork, straw, basketware and wickerwork.....</b>	IX	0.755	141.4	139.8	-5.2	0.2	-1.1	-1.8	-1.1
Wood and articles of wood; wood charcoal (Dec. 2014=100).....	44	0.717	97.2	96.0	-	0.2	-1.2	-1.8	-1.2
<b>Woodpulp, recovered paper, and paper products.....</b>	X	1.165	112.5	112.1	-1.0	-0.2	-0.2	-0.4	-0.4
Paper and paperboard; articles of paper pulp, paper or paperboard.....	48	0.775	106.4	106.2	-1.0	0.2	-0.2	-0.5	-0.2
<b>Textile and textile articles.....</b>	XI	5.505	114.8	114.6	0.4	-0.1	0.0	0.0	-0.2

See footnotes at end of table.

**Table 5. U.S. import price indexes and percent changes for selected categories of goods: April 2014 to April 2015 — Continued**

[2000=100, unless otherwise noted]

Description	Harmoni- zied system	Relative importance Mar. 2015 <sup>1</sup>	Index		Percent change				
			Mar. 2015	Apr. 2015	Annual	Monthly			
					Apr. 2014 to Apr. 2015	Dec. 2014 to Jan. 2015	Jan. 2015 to Feb. 2015	Feb. 2015 to Mar. 2015	Mar. 2015 to Apr. 2015
Articles of apparel and clothing accessories, knitted or crocheted.....	61	2.201	104.3	104.2	1.2	0.0	0.0	0.4	-0.1
Articles of apparel and clothing accessories, not knitted or crocheted.....	62	1.975	120.4	120.3	0.9	0.0	0.1	0.0	-0.1
Made-up or worn textile articles.....	63	0.642	106.9	106.7	-1.2	-0.2	-0.4	-0.1	-0.2
<b>Headgear, umbrellas, artificial flowers, etc...</b>	XII	1.501	123.0	123.2	1.2	-0.1	0.2	0.2	0.2
Footwear and parts of such articles.....	64	1.306	122.2	122.3	0.9	0.0	0.2	0.0	0.1
<b>Stone, plaster, cement, asbestos, ceramics, glass etc.....</b>	XIII	0.902	132.2	131.9	-0.8	-0.2	0.0	0.0	-0.2
Ceramic products.....	69	0.270	138.8	138.7	-1.7	-0.4	-0.2	0.3	-0.1
Glass and glassware.....	70	0.313	128.4	128.1	-1.2	-0.3	0.0	-0.3	-0.2
<b>Pearls, stones, precious metals, imitation jewelry, and coins.....</b>	XIV	3.080	172.5	172.6	-6.1	0.4	1.4	-2.0	0.1
<b>Base metals and articles of base metals. ...</b>	XV	5.434	172.1	169.9	-6.0	-1.7	-1.7	-1.4	-1.3
Iron and steel.....	72	1.176	196.4	186.5	-15.9	-2.2	-4.6	-3.0	-5.0
Articles of iron or steel.....	73	1.704	150.5	149.7	-2.0	-0.7	-0.8	-0.5	-0.5
Copper and articles thereof.....	74	0.462	288.4	290.8	-10.1	-3.9	-4.8	0.8	0.8
Aluminum and articles thereof.....	76	0.763	135.6	136.0	-0.3	-2.7	0.7	-2.6	0.3
Tools, implements, cutlery, spoons and forks, of base metal; parts thereof.....	82	0.448	128.9	128.6	-0.5	-0.1	0.0	0.0	-0.2
Miscellaneous articles of base metal.....	83	0.522	138.4	138.3	1.3	-0.1	0.1	0.3	-0.1
<b>Machinery, electrical equipment, TV image and sound recorders, parts, etc.....</b>	XVI	29.877	83.0	82.7	-2.0	-0.5	-0.1	-0.2	-0.4
Machinery and mechanical appliances; parts thereof.....	84	15.205	88.3	87.8	-1.6	-0.4	-0.2	-0.1	-0.6
Electrical machinery and equip, sound and TV recorders & reproducers, parts.....	85	14.672	77.9	77.7	-2.6	-0.5	-0.1	-0.4	-0.3
<b>Vehicles, aircraft, vessels and associated transport equipment.....</b>	XVII	13.780	114.5	114.5	-1.4	-0.4	-0.2	-0.2	0.0
Motor vehicles and their parts.....	87	12.455	113.2	113.2	-1.5	-0.5	-0.2	-0.1	0.0
Aircraft, spacecraft, and parts thereof (Dec. 2002=100).....	88	1.231	119.2	119.1	-0.8	0.0	0.0	-0.8	-0.1
<b>Optical, photo, measuring, medical &amp; musical instruments; &amp; timepieces.....</b>	XVIII	3.916	104.1	103.6	-1.1	-0.3	-0.1	0.1	-0.5
Optical, photographic, measuring and medical instruments.....	90	3.590	100.9	100.5	-0.9	-0.2	-0.2	0.2	-0.4
Clocks and watches and parts thereof.....	91	0.263	143.0	140.3	-2.6	-0.7	0.4	0.1	-1.9
<b>Miscellaneous manufactured articles.....</b>	XX	4.054	113.4	113.3	0.0	-0.2	-0.3	-0.2	-0.1
Furniture & stuffed furnishings; lamps & lighting fittings, nesoi; prefab bldgs.....	94	2.445	118.2	117.9	0.4	0.1	-0.3	-0.3	-0.3
Toys, games and sports equipment; parts and accessories thereof.....	95	1.349	105.0	104.9	-0.8	-0.8	0.0	0.0	-0.1
Miscellaneous manufactured articles.....	96	0.259	134.8	134.8	-0.5	0.6	-0.6	-0.1	0.0

<sup>1</sup> Relative importance figures are based on 2013 trade values.

NOTES: Data may be revised in each of the three months after original publication.

Dash = Not available

**Table 6. U.S. export price indexes and percent changes for selected categories of goods: April 2014 to April 2015**

[2000=100, unless otherwise noted]

Description	Harmoni- zied system	Relative importance Mar. 2015 <sup>1</sup>	Index		Percent change				
			Mar. 2015	Apr. 2015	Annual Apr. 2014 to Apr. 2015	Monthly			
						Dec. 2014 to Jan. 2015	Jan. 2015 to Feb. 2015	Feb. 2015 to Mar. 2015	Mar. 2015 to Apr. 2015
<b>Live animals; animal products.....</b>	I	1.985	210.8	206.9	-15.6	-4.6	-2.5	-2.1	-1.9
Meat & edible meat offal (Dec. 2006=100)...	02	1.159	163.1	158.6	-13.2	-4.3	-2.6	-5.7	-2.8
Fish and crustaceans, molluscs and other aquatic invertebrates.....	03	0.447	234.3	231.6	10.8	1.6	-0.6	9.6	-1.2
<b>Vegetable products.....</b>	II	4.011	213.0	212.3	-17.8	-1.0	-3.1	-1.3	-0.3
Edible fruit and nuts; peel of citrus fruit or melons.....	08	1.110	174.3	172.2	-5.3	-1.7	-1.0	-4.5	-1.2
Cereals.....	10	1.034	206.0	211.9	-20.2	-3.5	-5.6	-0.8	2.9
Oilseeds and misc. grains, seeds, fruits, plants, straw and fodder.....	12	1.436	215.4	212.4	-26.7	1.4	-4.1	-0.1	-1.4
<b>Animal or vegetable fats and oils (Dec. 2009=100).....</b>	III	0.201	96.2	93.3	-20.4	-0.9	-6.8	-0.5	-3.0
<b>Prepared foodstuffs, beverages, and tobacco.....</b>	IV	2.996	158.4	157.4	-7.5	-0.5	-0.4	-1.6	-0.6
Preparations of vegetables, fruit, nuts or other parts of plants (Dec. 2009=100)....	20	0.400	118.5	118.1	-0.8	0.9	-0.1	0.1	-0.3
Beverages, spirits, and vinegar (Dec. 2008=100).....	22	0.509	110.2	110.5	-0.9	-0.5	0.1	-0.1	0.3
Residues and waste from the food industries; prepared animal feed.....	23	0.776	234.6	236.2	-16.7	-1.1	-0.2	-2.4	0.7
<b>Mineral products.....</b>	V	7.919	211.3	199.4	-33.6	-16.2	2.7	3.9	-5.6
Ores, slag and ash (Dec. 2012=100).....	26	0.492	88.5	86.1	-6.0	-3.9	-1.2	-0.2	-2.7
Mineral fuels, oils and residuals, bituminous substances and mineral waxes.....	27	7.238	204.1	191.8	-35.6	-17.3	3.1	4.3	-6.0
<b>Products of the chemical or allied industries.....</b>	VI	10.823	143.5	143.1	-4.1	-1.2	-0.6	-0.3	-0.3
Inorganic chemicals.....	28	0.888	184.5	185.0	7.4	2.4	2.6	1.3	0.3
Organic chemicals.....	29	2.910	145.2	143.5	-11.5	-3.9	-1.4	-1.2	-1.2
Pharmaceutical products.....	30	2.551	110.9	110.3	-4.4	-1.0	-1.9	-0.4	-0.5
Essential oils and resinoids; perfumery cosmetic or toilet preparations.....	33	0.784	136.2	136.4	2.3	2.5	-0.3	0.2	0.1
Soap; lubricants; waxes, polishing or scouring products; candles, pastes.....	34	0.478	114.5	114.4	-4.5	-0.1	-2.9	0.7	-0.1
Miscellaneous chemical products.....	38	1.899	153.3	154.7	-0.3	-1.3	1.0	-0.2	0.9
<b>Plastics and articles thereof; rubber and articles thereof.....</b>	VII	5.177	144.2	143.5	-4.8	-1.3	-1.3	-0.2	-0.5
Plastics and articles thereof.....	39	4.224	139.8	139.0	-4.4	-1.5	-1.1	-0.2	-0.6
Rubber and articles thereof.....	40	0.953	162.9	162.8	-6.3	-0.7	-2.0	0.1	-0.1
<b>Raw hides, skins, leather, furskins, travel goods, etc.....</b>	VIII	0.440	148.2	144.6	-8.8	-1.8	-0.9	-0.3	-2.4
Raw hides and skins other than furskins and leather (Dec.2014=100).....	41	0.273	95.9	92.2	-	-2.6	-0.9	-0.6	-3.9
<b>Wood, wood charcoal, cork, straw, baskets and wickerwork (Dec. 2014=100).....</b>	IX	0.622	98.8	97.8	-	0.2	-0.8	-0.6	-1.0
<b>Woodpulp, recovered paper, and paper products.....</b>	X	2.212	122.9	122.9	-2.1	-0.9	-1.2	-0.4	0.0
Woodpulp and recovered paper.....	47	0.607	121.7	122.1	-7.6	-1.9	-3.6	-0.8	0.3
Paper and paperboard; articles of paper pulp, paper or paperboard.....	48	1.197	123.3	123.6	0.2	-0.7	-0.2	-0.3	0.2
Printed material (Dec. 2014=100).....	49	0.409	100.3	99.1	-	0.3	0.0	0.0	-1.2
<b>Textile and textile articles.....</b>	XI	1.775	122.6	123.1	-9.4	-0.6	-0.7	-0.6	0.4

See footnotes at end of table.

**Table 6. U.S. export price indexes and percent changes for selected categories of goods: April 2014 to April 2015 — Continued**

[2000=100, unless otherwise noted]

Description	Harmonized system	Relative importance Mar. 2015 <sup>1</sup>	Index		Percent change				
			Mar. 2015	Apr. 2015	Annual	Monthly			
					Apr. 2014 to Apr. 2015	Dec. 2014 to Jan. 2015	Jan. 2015 to Feb. 2015	Feb. 2015 to Mar. 2015	Mar. 2015 to Apr. 2015
Cotton, including yarns and woven fabrics thereof.....	52	0.451	118.7	119.8	-23.5	-0.3	-1.8	-0.9	0.9
<b>Stone, plaster, cement, asbestos, ceramics, glass etc.....</b>	XIII	0.816	122.6	122.4	2.1	1.7	0.2	0.0	-0.2
Glass and glassware.....	70	0.422	99.6	99.3	1.0	0.5	0.2	0.0	-0.3
<b>Pearls, stones, precious metals, imitation jewelry, and coins.....</b>	XIV	4.779	236.9	236.1	-7.0	-0.2	1.9	-1.6	-0.3
<b>Base metals and articles of base metals. ...</b>	XV	5.212	154.3	153.7	-5.4	-1.3	-1.8	-0.4	-0.4
Iron and steel.....	72	1.236	167.4	164.5	-13.9	-0.3	-5.0	-1.2	-1.7
Copper and articles thereof.....	74	0.504	187.2	192.4	-13.9	-4.5	-4.9	2.2	2.8
Aluminum and articles thereof.....	76	0.888	118.2	117.9	0.7	-3.2	-1.0	-1.1	-0.3
Miscellaneous articles of base metal.....	83	0.329	147.7	147.7	0.4	0.4	0.0	0.0	0.0
<b>Machinery, electrical equipment, TV image and sound recorders, parts, etc.....</b>	XVI	28.875	97.5	97.1	-0.3	0.2	0.1	-0.1	-0.4
Machinery and mechanical appliances; parts thereof.....	84	17.363	114.0	113.6	0.9	0.4	0.4	0.0	-0.4
Electrical machinery and equipment and parts and accessories thereof.....	85	11.512	79.7	79.3	-2.0	-0.1	-0.1	-0.3	-0.5
<b>Vehicles, aircraft, vessels and associated transport equipment.....</b>	XVII	14.414	130.5	130.7	0.7	0.2	0.0	0.1	0.2
Motor vehicles and their parts.....	87	8.971	114.9	114.9	-0.1	-0.1	-0.3	0.1	0.0
<b>Optical, photo, measuring, medical &amp; musical instruments; &amp; timepieces.....</b>	XVIII	6.143	107.3	106.9	-0.7	-0.1	-0.1	-0.1	-0.4
<b>Miscellaneous manufactured articles.....</b>	XX	1.470	110.9	111.5	0.6	0.1	0.4	-0.4	0.5
Furniture; stuffed furnishings; lamps and lighting fittings nesoi;.....	94	0.832	122.4	123.8	1.1	0.2	0.5	-0.7	1.1
Toys, games and sports equipment; parts and accessories thereof.....	95	0.478	90.0	89.9	0.4	0.1	0.2	0.1	-0.1

<sup>1</sup> Relative importance figures are based on 2013 trade values.

NOTES: Data may be revised in each of the three months after original publication.

Dash = Not available

**Table 7. U.S. import price indexes and percent changes by locality of origin: April 2014 to April 2015**  
 [2000=100, unless otherwise noted]

Description	Relative importance Mar. 2015 <sup>1</sup>	Index		Percent change				
		Mar. 2015	Apr. 2015	Annual	Monthly			
				Apr. 2014 to Apr. 2015	Dec. 2014 to Jan. 2015	Jan. 2015 to Feb. 2015	Feb. 2015 to Mar. 2015	Mar. 2015 to Apr. 2015
<b>Industrialized Countries<sup>2</sup></b> .....	100.000	120.8	120.3	-9.8	-2.9	-0.3	-0.5	-0.4
Nonmanufactured articles.....	7.869	135.9	136.6	-46.5	-17.4	-0.9	-0.2	0.5
Manufactured articles.....	91.696	119.2	118.7	-4.0	-1.5	-0.2	-0.5	-0.4
<b>Other Countries<sup>3</sup></b> .....	100.000	123.4	123.2	-10.9	-3.3	-0.5	-0.1	-0.2
Nonmanufactured articles.....	10.758	197.1	204.2	-41.4	-17.4	-2.2	-0.1	3.6
Manufactured articles.....	89.017	106.4	105.7	-3.7	-1.2	-0.3	-0.1	-0.7
<b>Canada</b> .....	100.000	125.4	125.3	-19.6	-5.6	-0.9	-0.5	-0.1
Nonmanufactured articles.....	22.022	130.2	131.0	-47.1	-17.9	-1.0	0.3	0.6
Manufactured articles.....	77.287	128.4	128.1	-5.3	-1.4	-0.8	-0.7	-0.2
<b>European Union<sup>4</sup></b> .....	100.000	134.2	133.5	-3.6	-1.6	-0.2	-0.3	-0.5
Manufactured articles.....	99.401	130.7	130.1	-3.4	-1.5	-0.2	-0.3	-0.5
<b>France (Dec. 2003=100)</b> .....	100.000	122.4	121.9	-0.2	0.2	-0.6	0.0	-0.4
<b>Germany (Dec. 2003=100)</b> .....	100.000	117.0	116.5	-2.3	0.0	-0.7	-0.3	-0.4
<b>United Kingdom (Dec. 2003=100)</b> .....	100.000	121.6	121.2	-7.1	-5.7	1.6	-0.2	-0.3
<b>Latin America<sup>5</sup></b> .....	100.000	147.9	148.3	-14.4	-5.0	0.4	-0.1	0.3
Nonmanufactured articles.....	18.183	220.7	227.2	-38.9	-19.0	5.0	0.3	2.9
Manufactured articles.....	81.414	125.0	124.6	-4.6	-1.4	-0.6	-0.2	-0.3
<b>Mexico (Dec. 2003=100)</b> .....	100.000	130.7	130.9	-7.9	-2.8	0.0	-0.2	0.2
Nonmanufactured articles (Dec. 2008=100).....	10.080	122.6	125.0	-38.2	-19.1	2.3	2.5	2.0
Manufactured articles (Dec. 2008=100)...	89.611	91.0	91.0	-1.8	-0.7	-0.3	-0.4	0.0
<b>Pacific Rim (Dec. 2003=100)<sup>6</sup></b> .....	100.000	101.1	100.7	-1.9	-0.4	-0.2	-0.1	-0.4
<b>China (Dec. 2003=100)</b> .....	100.000	103.3	103.2	-0.6	-0.2	-0.1	-0.1	-0.1
<b>Japan</b> .....	100.000	97.0	96.5	-2.5	-0.6	-0.2	-0.1	-0.5
<b>Asian NICs<sup>7</sup></b> .....	100.000	86.9	86.4	-2.8	-0.9	-0.1	-0.7	-0.6
<b>ASEAN (Dec. 2003=100)<sup>8</sup></b> .....	100.000	100.0	98.9	-5.2	-1.1	-0.3	-0.1	-1.1
<b>Asia Near East (Dec. 2003=100)<sup>9</sup></b> .....	100.000	162.3	163.0	-39.2	-11.1	-7.9	-1.3	0.4

<sup>1</sup> Relative importance figures are based on 2013 trade values.

<sup>2</sup> Western Europe, Canada, Japan, Australia, New Zealand and South Africa.

<sup>3</sup> Eastern Europe, Latin America, OPEC countries, and other countries in Asia, Africa and the Western Hemisphere.

<sup>4</sup> European Union countries.

<sup>5</sup> Mexico, Central America, South America and the Caribbean.

<sup>6</sup> China, Japan, Australia, Brunei, Indonesia, Macao, Malaysia, New Zealand, Papua New Guinea, Philippines and the Asian Newly Industrialized Countries.

<sup>7</sup> Asian Newly Industrialized Countries - Hong Kong, Singapore, South Korea and Taiwan.

<sup>8</sup> Association of Southeast Asian Nations - Brunei, Cambodia, Indonesia, Laos, Malaysia, Myanmar, Philippines, Singapore, Thailand and Vietnam.

<sup>9</sup> Bahrain, Iran, Iraq, Israel, Jordan, Kuwait, Lebanon, Oman, Qatar, Saudi Arabia, Syria, United Arab Emirates and Yemen.

NOTES: Data may be revised in each of the three months after original publication.

Regions are not mutually exclusive.

Dash = Not available

**Table 8. U.S. international price indexes and percent changes for selected transportation services: April 2014 to April 2015**

[2000=100, unless otherwise noted]

Description	Relative importance Mar. 2015 <sup>1</sup>	Index		Percent change				
		Mar. 2015	Apr. 2015	Annual	Monthly			
				Apr. 2014 to Apr. 2015	Dec. 2014 to Jan. 2015	Jan. 2015 to Feb. 2015	Feb. 2015 to Mar. 2015	Mar. 2015 to Apr. 2015
<b>Air Freight</b>								
<b>Import Air Freight</b> .....	100.000	172.9	173.8	-1.1	0.1	0.3	3.1	0.5
Europe (Dec. 2003=100).....	25.112	150.2	145.9	-19.0	-3.3	-5.1	-1.8	-2.9
Asia.....	73.508	158.3	161.1	6.3	1.5	2.4	4.8	1.8
<b>Export Air Freight</b> .....	100.000	157.1	158.5	4.6	4.6	-2.0	-1.8	0.9
Europe (Dec. 2006=100).....	36.428	149.0	151.2	11.3	9.4	-1.8	-1.7	1.5
<b>Inbound Air Freight</b> .....	100.000	159.9	161.0	-2.0	1.0	-0.6	0.4	0.7
Europe (Dec. 2003=100).....	25.887	140.4	137.9	-13.4	-1.6	-3.8	-1.3	-1.8
Asia.....	63.454	147.9	150.5	2.8	2.3	0.7	1.1	1.8
<b>Outbound Air Freight</b> .....	100.000	149.4	144.9	-2.3	-0.7	-0.6	-0.7	-3.0
Europe (Dec. 2003=100).....	35.887	169.6	154.2	-6.9	-0.9	-0.1	-0.5	-9.1
Asia.....	47.360	140.4	141.0	0.0	-1.1	-0.8	-0.4	0.4
<b>Air Passenger Fares</b>								
<b>Import Air Passenger Fares</b> .....	100.000	191.3	185.8	-2.7	-6.8	-2.5	-2.4	-2.9
Europe.....	49.580	232.5	219.8	5.0	3.1	2.7	-3.8	-5.5
Asia.....	24.316	141.3	137.1	-6.2	-14.4	-6.2	2.2	-3.0
Latin America/Caribbean.....	10.211	167.0	165.7	-4.8	-11.2	0.4	0.6	-0.8
<b>Export Air Passenger Fares</b> .....	100.000	165.5	159.5	-13.3	0.4	-13.3	0.9	-3.6
Europe.....	30.050	210.2	203.3	-8.9	-5.4	-1.7	0.2	-3.3
Asia.....	26.477	136.6	129.7	-15.0	2.5	-17.9	-0.5	-5.1
Latin America/Caribbean.....	24.755	184.6	172.1	-13.4	-0.8	-9.4	2.7	-6.8

<sup>1</sup> Relative importance figures are based on 2013 trade values.

NOTES: Data may be revised in each of the three months after original publication.

Dash = Not available

## TECHNICAL NOTE

**Import and Export Merchandise and Services Price Indexes** -- All indexes use a modified Laspeyres formula and are not seasonally adjusted. Price indexes are reweighted annually, with a two-year lag in the weights. Published series use a base year of 2000=100 where possible. More detailed index series and additional information may be obtained at <http://www.bls.gov/mxp>, or by calling (202) 691-7101.

**Merchandise Goods Classification Systems** -- The merchandise price indexes are published using three classification systems. Items are classified by end use according to the Bureau of Economic Analysis Classification System, by industry according to the North American Industry Classification System (NAICS), and by product category according to the Harmonized System (HS). While classification by end use and product category are self-explanatory, some notes are in order for classifying items by industry. In the NAICS imports and exports tables, items are classified by output industry, not input industry. As an example, NAICS import index 326 (plastics and rubber products manufacturing) include outputs such as manufactured plastic rather than inputs such as petroleum. The NAICS classification structure also matches the classification system used by the PPI (Producer Price Index) to produce the NAICS primary products indexes.

**Import Price Indexes** -- Products have been classified by the Harmonized Tariff Schedule of the United States Annotated (TSUSA). Import prices are based on U.S. dollar prices paid by the U.S. importer. The prices are generally either "free on board" (f.o.b.) foreign port or "cost, insurance, and freight" (c.i.f.) U.S. port transaction prices, depending on the practices of the individual industry. The index for crude petroleum is calculated from data collected by the U.S. Department of Energy.

**Export Price Indexes** -- Products have been classified by the Harmonized Schedule B classification system of the U.S. Bureau of the Census. The prices used are generally either "free alongside ship" (f.a.s.) factory or "free on board" (f.o.b.) transaction prices, depending on the practices of the individual industry. Prices used in the grain index, excluding rice, are obtained from the U.S. Department of Agriculture.

**Services Price Indexes** -- Starting in September 2008 the Import Air Passenger Fares Indexes represent changes in the average revenue per passenger received by foreign carriers from U.S. residents and are calculated from data obtained from an airline consulting service. These data include tickets sold by travel agencies and travel websites. Tickets sold directly by the airlines are excluded, as are frequent flyer tickets generally. Starting in January 2008 the Export Air Passenger Fares Indexes represent changes in the average revenue per passenger received by U.S. carriers from foreign residents and are calculated from data collected directly from airlines. These data include frequent flyer tickets and those sold by consolidators. Taxes and fees are included in the Import Air Passenger Fares Index and excluded from the Export Air Passenger Fares Index. The Air Freight Indexes are calculated from data collected directly from airlines. These data exclude mail and passenger baggage. The scope of the service being priced is the movement of freight from airport to airport only, and does not include any ground transportation or port service. The Air Freight Indexes are presented using two definitions: Balance of Payments (which represent transactions between U.S. and foreign residents) and International (which represent transactions inbound to and outbound from the U.S.). Fact sheets specifying detailed information for each services industry are available at <http://www.bls.gov/mxp> under "MXP Publications."

**Import Indexes by Locality of Origin** -- Prices used in these indexes are a subset of the data collected for the Import Price Indexes. Beginning with January 2002, the indexes are defined by locality of origin using a nomenclature based upon the North American Industry Classification System (NAICS). Nonmanufactured goods are defined as NAICS 11 and 21 and manufactured goods are defined as NAICS 31-33.

**Revision Policy** -- To reflect the availability of late reports and corrections by respondents, monthly data may be revised in each of the three months after original publication. After three months, no further data revisions take place. So, for example, data released in the January release will be subject to revision in the releases for February, March, and April.

**Uses of the Data** -- The primary use of the indexes is to deflate trade statistics, notably the foreign trade sector of the National Income and Product Accounts constructed by the Department of Commerce. Other published indexes are useful for general market analysis. For trade in international services, Balance of Payments indexes are used for deflating National Income and Product Accounts, while International indexes are more appropriate for market analysis. Merchandise and services indexes also can be used to study U.S. competitiveness and to compute price elasticities, and the merchandise import indexes by country or region of origin are useful in terms of trade analysis.

**E-Mail Subscription** -- The U.S. Import and Export Price Indexes news release is available through an e-mail subscription service at (<http://www.bls.gov/bls/list.htm>).

**Additional Information** -- More detailed data are available on the Import/Export Price Indexes home page at (<http://www.bls.gov/mxp>). For technical assistance in using the BLS Internet site, send e-mail to ([labstat.helpdesk@bls.gov](mailto:labstat.helpdesk@bls.gov)). For Import/Export Price Index data requests, send e-mail to ([mxpinfo@bls.gov](mailto:mxpinfo@bls.gov)).

Information from this release will be made available to sensory impaired individuals upon request. Voice phone: 202-691-5200; Federal Relay Service: 1-800-877-8339.