

Transmission of material in this release is embargoed until
8:30 a.m. (EDT) Tuesday, May 14, 2013

USDL-13-0927

Technical information: (202) 691-7101 • MXPinfo@bls.gov • www.bls.gov/mxp
Media contact: (202) 691-5902 • PressOffice@bls.gov

U.S. IMPORT AND EXPORT PRICE INDEXES – APRIL 2013

U.S. import prices fell 0.5 percent in April, the U.S. Bureau of Labor Statistics reported today, following a 0.2 percent decrease in March. Lower prices for both fuel and nonfuel imports contributed to the declines in each month. Prices for U.S. exports decreased 0.7 percent in April after a 0.5 percent decline in March.

Chart 1. One-month percent change in the Import Price Index: April 2012 – April 2013

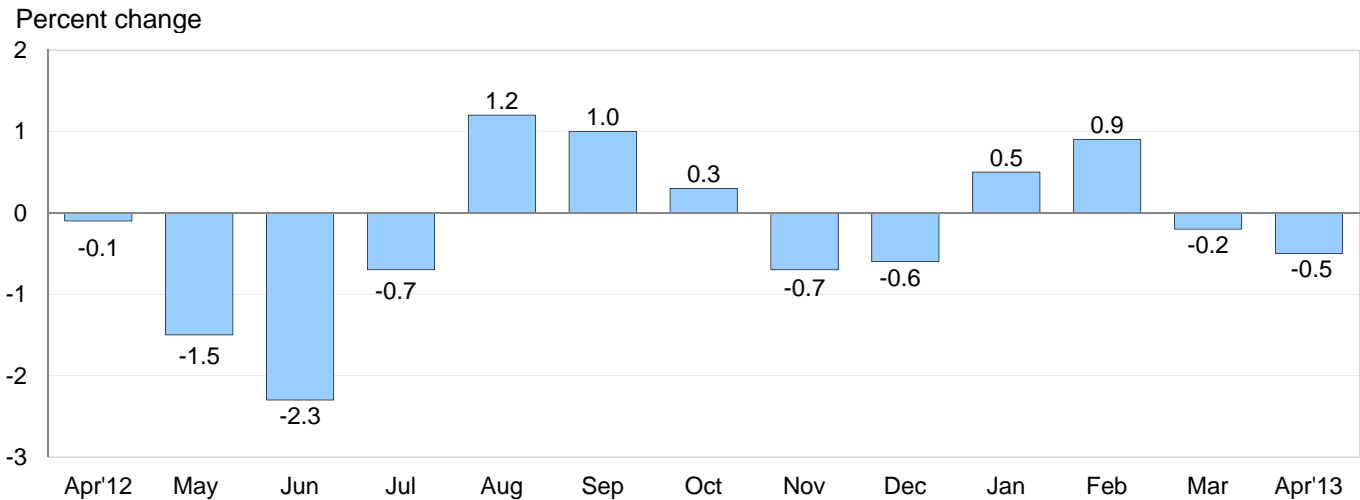
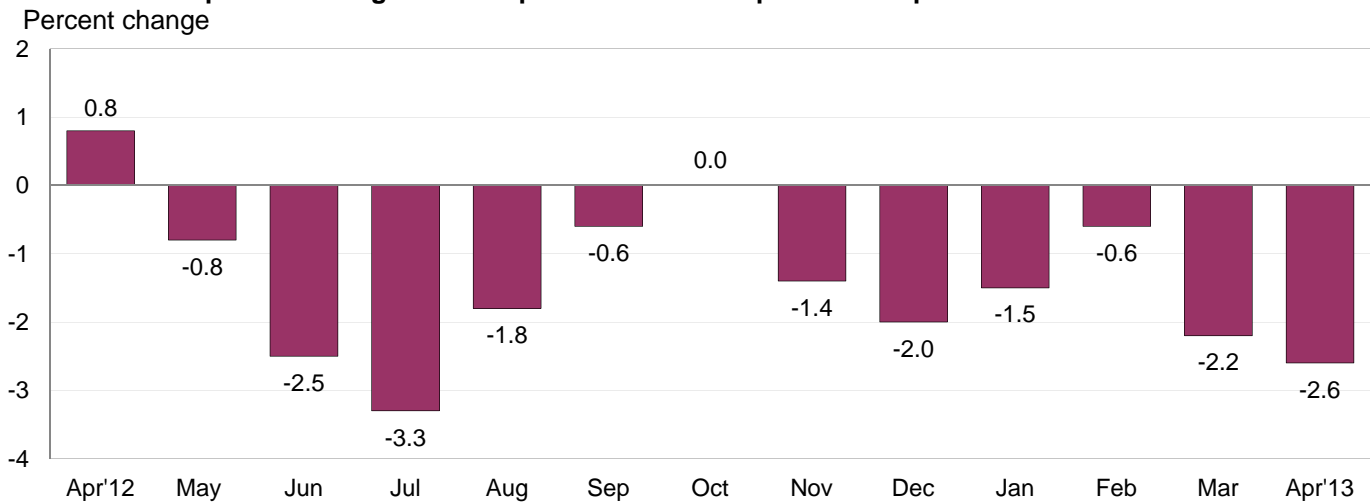


Chart 2. 12-month percent change in the Import Price Index: April 2012 – April 2013



All Imports: The price index for U.S. imports decreased for the second consecutive month in April, after increasing the two months prior to March. The April decrease was largely driven by lower fuel prices, although nonfuel prices also declined in April. Import prices fell 2.6 percent over the past 12 months, the largest year-over-year decline since a 3.3 percent decrease between July 2011 and July 2012.

Fuel Imports: Fuel prices continued to decline in April, decreasing 1.7 percent after falling 0.6 percent in March. In April, a 1.9 percent decline in petroleum prices more than offset a 6.1 percent increase in the price index for natural gas, the first advance in natural gas prices since a 16.6 percent rise in December 2012. The price index for import fuels decreased 7.8 percent for the year ended in April and has not recorded a year-over-year advance since March 2012. The annual decline in fuel prices was led by a 9.5 percent drop in petroleum prices, which more than offset an 83.8 percent rise in natural gas prices.

All Imports Excluding Fuel: Nonfuel import prices also fell in April, decreasing 0.2 percent following a 0.1 percent drop the previous month. Lower prices for nonfuel industrial supplies and materials; capital goods; automotive vehicles; and foods, feeds, and beverages more than offset a 0.3 percent advance in consumer goods prices. The price index for nonfuel imports fell 0.7 percent over the past 12 months.

Table A. Import and export price indexes, selected categories
Percent changes

Month	IMPORTS			EXPORTS		
	All imports	Fuel imports	Nonfuel imports	All exports	Agricultural exports	Non-agricultural exports
2012						
April.....	-0.1	-0.9	0.2	0.4	2.0	0.2
May.....	-1.5	-5.6	-0.1	-0.5	0.5	-0.6
June.....	-2.3	-8.5	-0.3	-1.7	-3.5	-1.5
July.....	-0.7	-2.0	-0.4	0.4	6.0	-0.2
August.....	1.2	6.1	-0.2	0.9	4.8	0.4
September.....	1.0	3.9	0.2	0.8	1.3	0.7
October.....	0.3	0.1	0.2	0.1	-1.7	0.3
November.....	-0.7	-2.2	-0.2	-0.6	0.5	-0.7
December.....	-0.6	-2.2	-0.1	-0.1	0.1	-0.2
2013						
January.....	0.5	1.9 ^r	0.2	0.4	-1.2	0.5
February.....	0.9 ^r	3.7 ^r	0.1	0.7	2.0 ^r	0.6
March.....	-0.2 ^r	-0.6 ^r	-0.1 ^r	-0.5 ^r	-1.9 ^r	-0.3 ^r
April.....	-0.5	-1.7	-0.2	-0.7	-2.2	-0.5
Apr. 2011 to 2012.....	0.8	-0.5	1.3	0.7	-3.1	1.2
Apr. 2012 to 2013.....	-2.6	-7.8	-0.7	-0.9	4.2	-1.5

r Revised

Chart 3. One-month percent change in the Export Price Index: April 2012 – April 2013

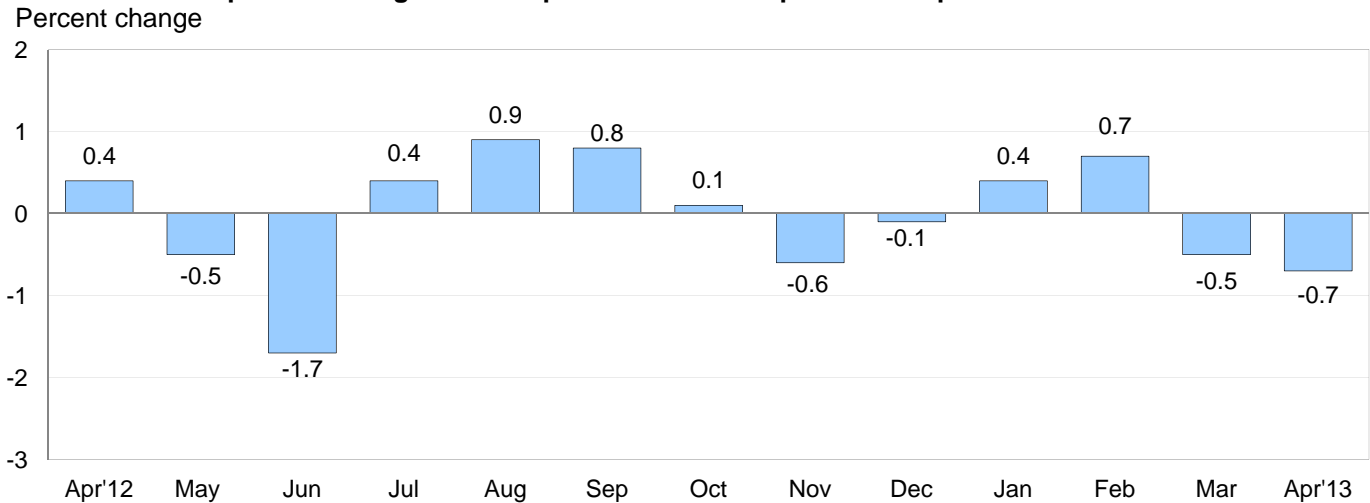
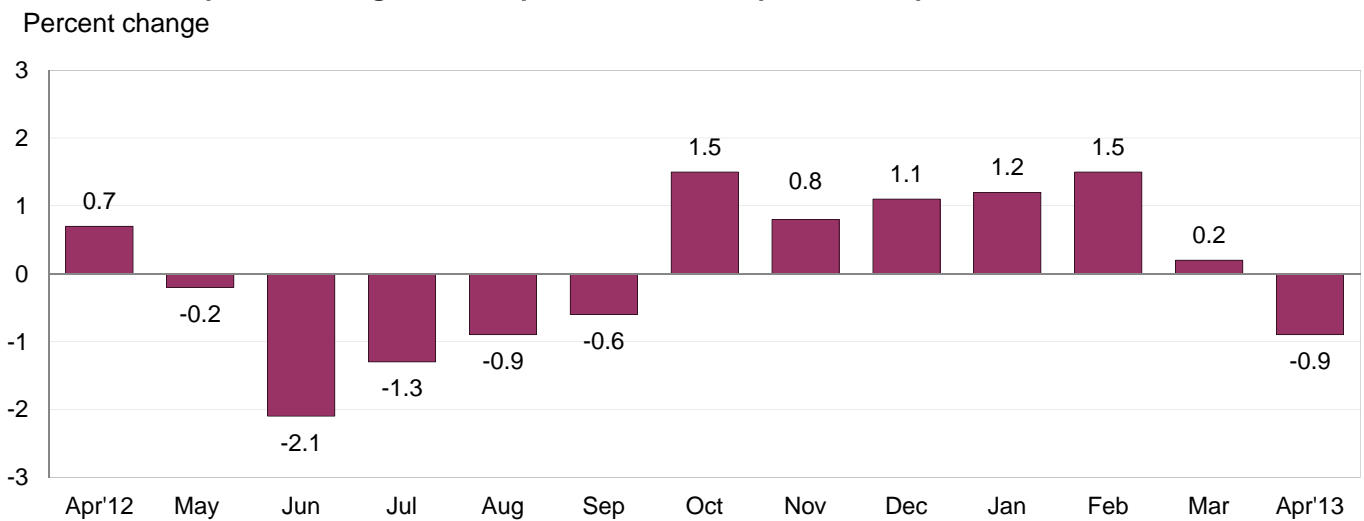


Chart 4. 12-month percent change in the Export Price Index: April 2012 – April 2013



All Exports: The price index for U.S. exports declined 0.7 percent in April, the largest monthly decrease since the index fell 1.7 percent in June 2012. Falling prices for both nonagricultural and agricultural exports each contributed to the decline. U.S. export prices also fell for the April 2012-13 period, decreasing 0.9 percent. The 12-month decrease was led by lower nonagricultural prices, which more than offset rising agricultural prices over the past year.

Agricultural Exports: Agricultural prices fell 2.2 percent in April after decreasing 1.9 percent in March. The April decline was driven by an 8.1 percent drop in corn prices, a 6.2 percent decrease in soybean prices, and a 7.7 percent fall in nut prices. Despite the recent monthly decreases, overall agricultural prices rose 4.2 percent for the year ended in April.

All Exports Excluding Agriculture: The price index for nonagricultural exports decreased 0.5 percent in April, led by a 1.0 percent decline in nonagricultural industrial supplies and materials prices. Each of the major finished goods categories decreased or was unchanged in April. Nonagricultural export prices fell 1.5 percent for the year ended in April, the largest year-over-year decline since a 1.5 percent decrease in September 2012.

SELECTED APRIL HIGHLIGHTS

Import Prices

Imports by Locality of Origin: Prices for imports from Japan decreased 0.6 percent in April, the largest monthly decline since a 0.6 percent drop in September 2008. The April decrease followed declines of 0.2 percent and 0.5 percent for the two previous months. The fall in import prices from Japan over the past three months paralleled a drop in the value of the Japanese yen relative to the U.S. dollar during the first quarter of 2013. Prices for imports from China fell for the second consecutive month in April, edging down 0.1 percent following a 0.2 percent decrease in March. Import prices from China have not recorded a monthly advance since a 0.1 percent rise in February 2012 and decreased 0.9 percent over the past year. Prices for imports from Canada, Mexico, and the European Union also decreased in April, falling 0.6 percent, 0.9 percent, and 0.1 percent, respectively.

Nonfuel Industrial Supplies and Materials: The price index for nonfuel industrial supplies and materials declined 0.7 percent in April after decreasing 0.5 percent the previous month. The decline was primarily led by a 2.2 percent drop in unfinished metals prices.

Finished Goods: Capital goods prices fell for the third consecutive month in April, down 0.2 percent. Prices for capital goods declined 0.6 percent over the past year, the largest 12-month decrease since a 0.7 percent drop in February 2010. The price index for automotive vehicles decreased 0.3 percent in April, led by a 0.4 percent decline in passenger cars prices. In contrast, consumer goods prices rose 0.3 percent in April, led by a 1.8 percent advance in medicinal, dental, and pharmaceutical prices.

Foods, Feeds, and Beverages: Foods, feeds, and beverages prices decreased 0.5 percent in April after rising 1.6 percent in March. The decline was led by a 7.4 percent drop in vegetable prices, which followed an 11.5 percent increase the previous month.

Transportation Services: Import air passenger fares rose 0.3 percent after three consecutive monthly declines. Higher European and Asian fares contributed to the April advance. The index for import air passenger fares increased 1.2 percent for the year ended in April. In contrast, import air freight prices decreased 0.9 percent in April and 2.4 percent over the past year.

Export Prices

Nonagricultural Industrial Supplies and Materials: Nonagricultural industrial supplies and materials prices declined 1.0 percent in April, following a 0.8 percent drop in March. Both declines were driven by lower fuel prices, although nonferrous metal prices and prices for chemicals each decreased in April as well.

Finished Goods: Finished goods prices decreased overall in April. Prices for capital goods fell 0.2 percent, led by a 2.0 percent drop in semiconductor prices. The price index for consumer goods declined 0.3 percent driven by lower prices for medicinal, dental, and pharmaceutical products. Automotive vehicles prices were unchanged in April.

Transportation Services: Export air passenger fares fell 3.2 percent in April, following a 0.9 percent advance in March. A 5.7 percent drop in Asian fares, a 4.1 percent decline in European fares, and a 3.3 percent decrease in Latin American/Caribbean fares each contributed to the decline. In contrast, the price index for export air freight rose 0.3 percent in April.

Import and Export Price Index data for May 2013 are scheduled for release on Thursday, June 13, 2013 at 8:30 a.m. (EDT).

Table 1. U.S. import price indexes and percent changes for selected categories of goods: April 2012 to April 2013

[2000=100, unless otherwise noted]

Description	End Use	Relative importance Mar. 2013 ¹	Index		Percent change				
			Mar. 2013	Apr. 2013	Annual Apr. 2012 to Apr. 2013	Monthly			
						Dec. 2012 to Jan. 2013	Jan. 2013 to Feb. 2013	Feb. 2013 to Mar. 2013	Mar. 2013 to Apr. 2013
All commodities		100.000	141.0	140.3	-2.6	0.5	0.9	-0.2	-0.5
All imports excluding food and fuels (Dec. 2010=100)		73.497	103.4	103.2	-0.8	0.2	0.0	-0.2	-0.2
All imports excluding petroleum		79.462	116.5	116.4	-0.3	0.1	0.0	-0.1	-0.1
All imports excluding fuels (Dec. 2001=100) ..		78.514	120.6	120.4	-0.7	0.2	0.1	-0.1	-0.2
Foods, feeds, & beverages	0	5.017	173.7	172.9	-0.9	-0.2	1.2	1.6	-0.5
Agricultural foods, feeds & beverages, excluding distilled beverages.....	00	3.888	194.5	192.3	-2.1	-0.5	1.1	1.4	-1.1
Nonagricultural foods (fish, distilled beverages).....	01	1.129	126.5	129.1	3.4	0.8	1.5	2.7	2.1
Industrial supplies & materials	1	34.942	256.9	253.5	-6.5	1.3	2.3	-0.5	-1.3
Industrial supplies & materials excluding petroleum.....		14.404	166.9	166.2	-0.7	0.0	-0.1	-0.5	-0.4
Industrial supplies & materials excluding fuels (Dec. 2001=100).....		13.456	188.4	187.1	-3.5	0.5	0.1	-0.5	-0.7
Industrial supplies & materials, durable.....		8.021	177.9	176.1	-2.9	0.5	-0.1	-0.2	-1.0
Industrial supplies & materials nondurable excluding petroleum.....		5.434	153.7	154.2	2.0	-0.5	-0.1	-0.8	0.3
Fuels & lubricants.....	10	21.486	344.7	339.0	-7.8	1.9	3.7	-0.6	-1.7
Petroleum & petroleum products.....	100	20.538	383.6	376.4	-9.5	2.2	4.0	-0.6	-1.9
Crude.....	10000	15.585	394.0	386.2	-9.7	2.2	4.3	-1.3	-2.0
Fuels, n.e.s.-coals & gas.....	101	0.737	123.7	129.7	66.9	-5.3	-2.1	0.0	4.9
Gas-natural.....	10110	0.608	109.3	116.0	83.8	-6.1	-2.1	-0.4	6.1
Paper & paper base stocks.....	11	0.554	112.7	112.7	-0.4	0.4	1.0	-0.3	0.0
Materials associated with nondurable supplies & materials.....	12	4.959	174.7	174.1	-5.0	0.4	0.2	-1.1	-0.3
Selected building materials.....	13	1.043	148.9	151.1	11.8	2.2	0.6	0.8	1.5
Unfinished metals related to durable goods.....	14	3.791	263.5	257.8	-7.2	0.2	0.1	-0.4	-2.2
Finished metals related to durable goods. ...	15	1.585	160.3	159.2	-3.0	0.3	-0.9	-0.3	-0.7
Nonmetals related to durable goods.....	16	1.524	114.4	114.2	-1.4	0.2	-0.1	-0.1	-0.2
Capital goods	2	23.863	93.0	92.8	-0.6	0.0	-0.1	-0.1	-0.2
Electric generating equipment.....	20	2.968	119.3	119.3	0.0	0.0	-0.1	-0.3	0.0
Nonelectrical machinery.....	21	19.053	85.8	85.5	-1.0	0.1	-0.2	-0.1	-0.3
Transportation equipment excluding motor vehicles (Dec. 2001=100).....	22	1.842	135.6	135.7	1.6	0.2	0.1	0.3	0.1
Automotive vehicles, parts & engines	3	12.143	114.9	114.5	0.0	0.1	0.0	-0.1	-0.3
Consumer goods, excluding automotives ..	4	24.035	107.7	108.0	0.3	0.2	0.1	-0.2	0.3
Nondurables, manufactured.....	40	11.687	115.9	116.7	1.5	0.5	0.2	-0.2	0.7
Durables, manufactured.....	41	11.039	99.2	99.1	-0.8	0.0	-0.3	-0.2	-0.1
Nonmanufactured consumer goods.....	42	1.309	116.4	116.6	-2.2	0.0	0.3	0.6	0.2

¹ Relative importance figures are based on 2011 trade values.

NOTES: Data may be revised in each of the three months after original publication.

Dash = Not available

Table 2. U.S. export price indexes and percent changes for selected categories of goods: April 2012 to April 2013

[2000=100, unless otherwise noted]

Description	End Use	Relative importance Mar. 2013 ¹	Index		Percent change				
			Mar. 2013	Apr. 2013	Annual Apr. 2012 to Apr. 2013	Monthly			
						Dec. 2012 to Jan. 2013	Jan. 2013 to Feb. 2013	Feb. 2013 to Mar. 2013	Mar. 2013 to Apr. 2013
All commodities		100.000	134.4	133.5	-0.9	0.4	0.7	-0.5	-0.7
Agricultural commodities		10.514	224.8	219.8	4.2	-1.2	2.0	-1.9	-2.2
All exports excluding food and fuels (Dec. 2010=100)		80.768	103.2	103.0	-0.5	0.5	0.3	-0.3	-0.2
Nonagricultural commodities		89.485	127.9	127.3	-1.5	0.5	0.6	-0.3	-0.5
Foods, feeds, & beverages	0	9.784	225.4	219.9	4.3	-1.5	1.8	-2.0	-2.4
Agricultural foods, feeds & beverages, excluding distilled beverages.....	00	9.097	229.3	223.4	4.7	-1.6	1.9	-2.2	-2.6
Nonagricultural foods (fish, distilled beverages).....	01	0.687	191.2	190.2	-0.6	1.2	-0.1	0.6	-0.5
Industrial supplies & materials	1	34.381	183.0	181.3	-4.1	0.6	1.4	-0.7	-0.9
Industrial supplies & materials, durable.....		12.171	183.0	182.5	-3.7	-0.7	0.5	-1.5	-0.3
Industrial supplies & materials, nondurable.....		22.210	183.9	181.4	-4.4	1.3	2.0	-0.3	-1.4
Agricultural industrial supplies & materials..	10	1.417	205.1	205.1	1.7	2.0	2.4	0.0	0.0
Nonagricultural industrial supplies & materials		32.963	182.4	180.6	-4.4	0.6	1.4	-0.8	-1.0
Fuels & lubricants.....	11	9.447	264.0	256.1	-10.3	0.9	3.7	-0.6	-3.0
Nonagricultural supplies & materials excluding fuels & building materials.....	12	22.512	172.5	172.0	-2.5	0.4	0.5	-0.9	-0.3
Selected building materials.....	13	1.004	120.7	122.1	3.7	0.8	0.6	1.0	1.2
Capital goods	2	35.125	106.7	106.5	0.6	0.7	0.3	0.0	-0.2
Electrical generating equipment.....	20	3.458	114.8	114.8	1.4	0.4	0.3	-0.3	0.0
Nonelectrical machinery.....	21	25.544	95.7	95.5	0.2	0.6	0.2	0.0	-0.2
Transportation equipment excluding motor vehicles (Dec. 2001=100).....	22	6.123	151.8	151.6	1.7	0.9	0.7	0.3	-0.1
Automotive vehicles, parts & engines	3	8.857	113.5	113.5	0.4	0.3	0.3	0.0	0.0
Consumer goods, excluding automotives ..	4	11.853	115.7	115.4	-0.8	-0.1	-0.3	-0.3	-0.3
Nondurables, manufactured.....	40	5.414	115.0	114.2	-0.5	0.2	-0.3	-0.3	-0.7
Durables, manufactured.....	41	5.054	112.3	112.3	-1.4	-0.5	-0.4	-0.4	0.0

¹ Relative importance figures are based on 2011 trade values.

NOTES: Data may be revised in each of the three months after original publication.

Dash = Not available

Table 3. U.S. import price indexes and percent changes for selected categories of goods: April 2012 to April 2013

[December 2005=100, unless otherwise noted]

Description	NAICS	Relative importance Mar. 2013 ¹	Index		Percent change				
			Mar. 2013	Apr. 2013	Annual Apr. 2012 to Apr. 2013	Monthly			
						Dec. 2012 to Jan. 2013	Jan. 2013 to Feb. 2013	Feb. 2013 to Mar. 2013	Mar. 2013 to Apr. 2013
Nonmanufactured articles.....		18.678	169.9	167.1	-6.8	1.5	4.0	-0.6	-1.6
Agriculture, forestry, fishing and hunting...	11	1.851	176.8	172.7	-2.4	-0.8	3.5	4.1	-2.3
Crop production.....	111	1.305	182.7	176.8	-4.0	-2.4	4.4	5.0	-3.2
Forestry and logging (Dec. 2012=100).....	113	0.201	104.5	100.8	-	5.9	0.9	-2.2	-3.5
Mining.....	21	16.827	168.8	166.1	-7.3	1.7	4.0	-1.1	-1.6
Mining (except oil and gas) (Dec. 2006=100).....	212	0.320	134.0	133.6	-8.3	-3.2	-0.1	-0.5	-0.3
Manufactured articles.....		80.864	117.6	117.3	-1.4	0.3	0.1	-0.1	-0.3
Manufactured goods, part 1.....	31	10.396	123.4	123.6	-2.0	0.0	0.0	-0.2	0.2
Food manufacturing.....	311	2.821	153.7	154.2	-6.4	0.3	-0.3	-0.8	0.3
Beverage and tobacco product manufacturing.....	312	0.867	113.5	113.4	1.7	1.3	0.1	0.0	-0.1
Textile mills (Dec. 2011=100).....	313	0.387	101.9	101.9	0.2	-0.4	0.1	-0.1	0.0
Textile product mills.....	314	0.779	115.3	115.4	-1.1	-0.2	0.1	-0.4	0.1
Apparel manufacturing.....	315	3.902	110.6	110.5	-1.5	-0.5	0.2	0.1	-0.1
Leather and allied product manufacturing. . .	316	1.640	121.3	121.5	1.8	0.2	0.1	0.1	0.2
Manufactured goods, part 2.....	32	18.041	139.9	139.8	-2.0	0.9	1.0	0.1	-0.1
Wood product manufacturing.....	321	0.633	130.1	133.2	17.9	3.3	0.9	1.2	2.4
Paper manufacturing.....	322	1.021	110.1	110.1	-0.5	-0.3	0.5	-0.3	0.0
Petroleum and coal products manufacturing.....	324	4.392	170.8	168.0	-9.6	2.1	2.7	1.4	-1.6
Chemical manufacturing.....	325	9.151	136.2	136.9	0.6	0.8	0.6	-0.4	0.5
Plastics and rubber products manufacturing.....	326	1.937	127.1	126.4	-0.9	-0.4	0.1	0.0	-0.6
Nonmetallic mineral product manufacturing.....	327	0.825	128.9	129.1	-0.4	0.3	-0.4	-0.1	0.2
Manufactured goods, part 3.....	33	52.427	109.6	109.2	-1.0	0.1	-0.2	-0.1	-0.4
Primary metal manufacturing.....	331	4.419	172.6	168.9	-7.6	0.5	-0.3	-0.5	-2.1
Fabricated metal product manufacturing. . .	332	2.656	129.4	129.2	-0.5	-0.2	0.0	-0.4	-0.2
Machinery manufacturing.....	333	6.562	121.7	121.3	0.2	0.3	-0.2	-0.3	-0.3
Computer and electronic product manufacturing.....	334	15.902	81.2	81.1	-1.6	-0.2	-0.1	-0.4	-0.1
Electrical equipment, appliance, and component manufacturing.....	335	3.983	119.7	119.4	0.9	0.0	0.0	0.0	-0.3
Transportation equipment manufacturing. . .	336	12.872	112.5	112.3	0.6	0.2	0.0	-0.1	-0.2
Furniture and related product manufacturing.....	337	1.241	114.3	114.4	1.1	0.2	-0.1	0.4	0.1
Miscellaneous manufacturing.....	339	4.792	120.9	120.9	-1.3	0.0	-0.1	0.2	0.0

¹ Relative importance figures are based on 2011 trade values.

NOTES: Data may be revised in each of the three months after original publication.

Dash = Not available

Table 4. U.S. export price indexes and percent changes for selected categories of goods: April 2012 to April 2013

[December 2005=100, unless otherwise noted]

Description	NAICS	Relative importance Mar. 2013 ¹	Index		Percent change				
			Mar. 2013	Apr. 2013	Annual Apr. 2012 to Apr. 2013	Monthly			
						Dec. 2012 to Jan. 2013	Jan. 2013 to Feb. 2013	Feb. 2013 to Mar. 2013	Mar. 2013 to Apr. 2013
Nonmanufactured articles.....		7.934	174.0	169.4	1.1	-1.8	2.6	-1.6	-2.6
Agriculture, forestry, fishing and hunting...	11	5.838	215.4	206.7	2.9	-1.9	3.2	-2.0	-4.0
Crop production.....	111	5.392	224.0	213.3	2.5	-1.9	3.0	-2.1	-4.8
Mining.....	21	2.096	93.3	94.6	-5.6	-1.5	0.8	-0.5	1.4
Mining (except oil and gas).....	212	1.422	106.8	106.6	-15.0	-1.6	0.7	-1.2	-0.2
Manufactured articles.....		89.557	121.7	121.1	-0.9	0.5	0.5	-0.2	-0.5
Manufactured goods, part 1.....	31	6.980	152.0	151.5	3.3	0.1	0.1	-0.4	-0.3
Food manufacturing.....	311	4.916	174.7	173.8	3.5	0.0	0.2	-0.5	-0.5
Beverage and tobacco product manufacturing.....	312	0.569	128.2	127.3	6.9	1.2	0.7	-0.3	-0.7
Manufactured goods, part 2.....	32	26.567	135.2	133.5	-3.5	0.9	1.5	-0.1	-1.3
Wood product manufacturing.....	321	0.411	116.0	117.3	2.0	0.3	0.6	1.5	1.1
Paper manufacturing.....	322	1.792	120.9	121.0	1.1	1.1	0.1	0.5	0.1
Petroleum and coal products manufacturing.....	324	7.174	170.9	163.4	-11.1	1.4	4.6	-0.3	-4.4
Chemical manufacturing.....	325	14.216	132.0	131.7	-1.7	0.9	0.4	-0.2	-0.2
Plastics and rubber products manufacturing.....	326	2.194	119.4	120.0	2.0	0.3	0.1	-0.3	0.5
Nonmetallic mineral product manufacturing.....	327	0.780	111.7	112.3	0.7	-0.4	0.1	1.1	0.5
Manufactured goods, part 3.....	33	56.010	113.5	113.3	-0.2	0.3	0.2	-0.2	-0.2
Primary metal manufacturing.....	331	5.101	167.3	165.7	-6.1	-1.3	-0.4	-1.4	-1.0
Fabricated metal product manufacturing. . .	332	2.740	132.0	132.3	1.7	0.2	0.2	-0.2	0.2
Machinery manufacturing.....	333	11.518	122.1	122.0	1.3	0.7	0.2	0.0	-0.1
Computer and electronic product manufacturing.....	334	14.129	89.3	88.9	-1.4	0.2	0.2	-0.1	-0.4
Electrical equipment, appliance, and component manufacturing.....	335	3.268	113.6	113.9	1.4	0.6	0.1	-0.2	0.3
Transportation equipment manufacturing. . .	336	14.023	118.0	118.0	1.0	0.4	0.5	0.1	0.0
Furniture and related product manufacturing (Dec. 2011=100).....	337	0.311	105.5	105.8	3.1	0.3	0.3	0.1	0.3
Miscellaneous manufacturing.....	339	4.919	122.3	122.3	0.7	0.9	0.1	-0.5	0.0

1 Relative importance figures are based on 2011 trade values.

NOTES: Data may be revised in each of the three months after original publication.

Dash = Not available

Table 5. U.S. import price indexes and percent changes for selected categories of goods: April 2012 to April 2013

[2000=100, unless otherwise noted]

Description	Harmoni- zied system	Relative importance Mar. 2013 ¹	Index		Percent change				
			Mar. 2013	Apr. 2013	Annual Apr. 2012 to Apr. 2013	Monthly			
						Dec. 2012 to Jan. 2013	Jan. 2013 to Feb. 2013	Feb. 2013 to Mar. 2013	Mar. 2013 to Apr. 2013
Live animals; animal products.....	I	1.098	172.5	175.4	4.4	1.2	1.6	2.9	1.7
Meat and edible meat offal.....	02	0.247	217.0	219.1	3.2	1.6	0.4	-2.0	1.0
Fish and crustaceans, molluscs and other aquatic invertebrates.....	03	0.599	125.4	128.9	5.4	1.9	3.0	5.7	2.8
Vegetable products.....	II	1.655	214.6	209.0	-8.3	-1.3	3.0	2.5	-2.6
Edible vegetables, roots, and tubers.....	07	0.385	378.1	333.2	4.6	-10.3	6.3	13.4	-11.9
Edible fruit and nuts; peel of citrus fruit or melons.....	08	0.435	118.4	122.4	-4.2	2.3	4.3	2.0	3.4
Coffee, tea, mate and spices.....	09	0.383	250.6	240.2	-13.0	3.0	3.6	1.2	-4.2
Animal or vegetable fats and oils (Dec. 2009=100).....	III	0.253	119.3	117.9	-13.2	0.8	1.4	-1.6	-1.2
Prepared foodstuffs, beverages, and tobacco.....	IV	2.378	157.4	156.9	-0.4	0.2	-0.4	0.1	-0.3
Sugars and sugar confectionary (Dec. 2012=100).....	17	0.212	101.1	98.2	-	0.9	-0.3	0.5	-2.9
Cocoa and cocoa preparations (Dec. 2009=100).....	18	0.192	86.5	85.8	-0.9	-0.5	-4.7	-1.0	-0.8
Preparations of cereals, flour, starch or milk; bakers' wares (Dec. 2007=100).....	19	0.238	131.9	132.1	4.7	0.5	0.8	0.5	0.2
Preparations of vegetables, fruit, nuts, or other parts of plants.....	20	0.305	160.9	160.3	-7.8	-2.2	-0.7	-0.4	-0.4
Beverages, spirits, and vinegar.....	22	0.857	124.4	124.2	2.0	1.6	0.0	0.0	-0.2
Mineral products.....	V	21.390	346.8	341.1	-7.7	1.8	3.7	-0.6	-1.6
Mineral fuels, oils and residuals, bituminous substances and mineral waxes.....	27	21.109	343.5	337.8	-7.6	1.9	3.8	-0.6	-1.7
Products of the chemical or allied industries.....	VI	8.594	151.4	151.9	1.3	0.5	0.2	-0.5	0.3
Inorganic chemicals.....	28	0.814	364.7	356.4	1.3	-1.5	-1.1	-2.9	-2.3
Organic chemicals.....	29	2.635	138.1	136.7	-2.5	0.6	0.1	-1.8	-1.0
Pharmaceutical products.....	30	3.324	123.4	126.4	7.7	1.6	0.8	0.6	2.4
Fertilizers (Dec. 2009=100).....	31	0.407	129.8	127.7	-14.8	-1.5	-0.8	1.6	-1.6
Tanning extracts; dye, pigments, varnish, paints & putty (Dec. 2011=100).....	32	0.162	93.9	93.8	-12.3	0.9	0.1	-0.1	-0.1
Miscellaneous chemical products.....	38	0.482	102.8	102.1	-1.5	0.1	-0.1	0.2	-0.7
Plastics and articles thereof; rubber and articles thereof.....	VII	3.198	153.2	152.9	-0.5	1.0	0.3	-0.5	-0.2
Plastics and articles thereof.....	39	1.946	148.0	149.1	3.3	1.6	0.7	-0.6	0.7
Rubber and articles thereof.....	40	1.252	163.7	161.1	-6.1	0.0	-0.1	-0.4	-1.6
Raw hides, skins, leather, furskins, travel goods, etc.....	VIII	0.593	126.1	126.2	0.1	0.3	-0.1	-0.2	0.1
Articles of leather; travel goods, bags, etc. of various materials.....	42	0.548	127.2	127.3	0.3	0.2	0.0	0.0	0.1
Wood, wood charcoal, cork, straw, basketware and wickerwork.....	IX	0.671	158.2	162.3	18.6	3.4	1.2	1.2	2.6
Woodpulp, recovered paper, and paper products.....	X	1.117	113.3	113.3	-0.2	-0.3	0.5	-0.1	0.0
Pulp wood, waste paper, and paperboard (Dec. 2011=100).....	47	0.174	101.6	102.3	3.0	0.9	2.7	0.5	0.7
Paper and paperboard; articles of paper pulp, paper or paperboard.....	48	0.744	107.3	107.1	-1.5	-0.6	0.1	-0.3	-0.2
Textile and textile articles.....	XI	4.913	114.1	114.1	-1.5	-0.4	0.1	0.0	0.0
Articles of apparel and clothing accessories, knitted or crocheted.....	61	1.929	103.8	103.8	-2.8	-0.5	-0.2	-0.3	0.0

See footnotes at end of table.

Table 5. U.S. import price indexes and percent changes for selected categories of goods: April 2012 to April 2013 — Continued

[2000=100, unless otherwise noted]

Description	Harmonized system	Relative importance Mar. 2013 ¹	Index		Percent change				
			Mar. 2013	Apr. 2013	Annual Apr. 2012 to Apr. 2013	Monthly			
						Dec. 2012 to Jan. 2013	Jan. 2013 to Feb. 2013	Feb. 2013 to Mar. 2013	Mar. 2013 to Apr. 2013
Articles of apparel and clothing accessories, not knitted or crocheted.....	62	1.807	117.4	117.3	-0.8	-0.7	0.5	0.4	-0.1
Made-up or worn textile articles.....	63	0.542	107.9	108.2	-1.2	-0.3	0.0	-0.4	0.3
Headgear, umbrellas, artificial flowers, etc.. ..	XII	1.348	121.0	121.3	2.3	0.2	0.1	0.2	0.2
Footwear and parts of such articles.....	64	1.155	120.2	120.5	2.6	0.0	0.1	0.2	0.2
Stone, plaster, cement, asbestos, ceramics, glass etc.....	XIII	0.759	132.1	131.9	0.4	0.6	-0.2	0.1	-0.2
Articles of stone, plaster, cement, asbestos, or mica (Dec. 2001=100).....	68	0.245	125.5	125.3	0.6	0.2	0.1	0.5	-0.2
Ceramic products.....	69	0.237	140.3	140.5	-1.1	-0.3	0.0	-0.2	0.1
Glass and glassware.....	70	0.277	128.4	128.0	1.3	1.7	-0.6	0.0	-0.3
Pearls, stones, precious metals, imitation jewelry, and coins.....	XIV	3.288	201.1	198.4	-4.2	-0.8	-0.6	-0.9	-1.3
Base metals and articles of base metals.....	XV	5.031	185.5	183.3	-4.9	0.9	0.1	0.1	-1.2
Iron and steel.....	72	1.147	220.1	218.7	-11.4	-0.5	0.7	0.6	-0.6
Articles of iron or steel.....	73	1.487	156.9	156.6	-3.4	0.2	-0.4	-0.3	-0.2
Copper and articles thereof.....	74	0.487	356.4	341.4	-7.5	2.7	-0.9	-1.4	-4.2
Nickel and articles thereof (Dec. 2009=100)...	75	0.152	104.5	100.1	-9.4	5.2	0.2	1.9	-4.2
Aluminum and articles thereof.....	76	0.684	140.9	138.4	-3.4	2.0	0.1	0.4	-1.8
Tools, implements, cutlery, spoons and forks, of base metal; parts thereof.....	82	0.383	129.7	129.3	1.3	1.3	-0.1	0.1	-0.3
Miscellaneous articles of base metal.....	83	0.429	136.5	136.4	1.1	0.1	0.1	0.0	-0.1
Machinery, electrical equipment, TV image and sound recorders, parts, etc.....	XVI	26.272	85.4	85.2	-0.8	-0.1	-0.1	-0.2	-0.2
Machinery and mechanical appliances; parts thereof.....	84	13.591	90.0	89.8	0.1	0.1	-0.1	-0.1	-0.2
Electrical machinery and equip, sound and TV recorders & reproducers, parts.....	85	12.681	81.0	80.8	-1.7	-0.2	-0.2	-0.4	-0.2
Vehicles, aircraft, vessels and associated transport equipment.....	XVII	10.643	116.7	116.3	0.3	0.2	0.0	0.0	-0.3
Motor vehicles and their parts.....	87	9.715	115.5	115.1	0.2	0.2	0.0	-0.1	-0.3
Aircraft, spacecraft, and parts thereof (Dec. 2002=100).....	88	0.860	119.9	119.9	1.7	0.0	0.1	0.4	0.0
Optical, photo, measuring, medical & musical instruments; & timepieces.....	XVIII	3.305	103.7	103.9	-0.7	-0.1	0.0	0.0	0.2
Optical, photographic, measuring and medical instruments.....	90	2.995	100.5	100.8	-1.3	-0.3	0.0	0.1	0.3
Clocks and watches and parts thereof.....	91	0.252	142.2	141.2	9.3	0.7	0.1	0.0	-0.7
Miscellaneous manufactured articles.....	XX	3.432	113.2	113.2	0.9	0.2	-0.1	0.3	0.0
Furniture & stuffed furnishings; lamps & lighting fittings, nesoi; prefab bldgs.....	94	1.918	117.1	117.2	1.0	0.1	-0.2	0.4	0.1
Toys, games and sports equipment; parts and accessories thereof.....	95	1.322	105.3	105.3	0.3	0.2	0.0	0.0	0.0
Miscellaneous manufactured articles.....	96	0.192	138.4	138.4	3.9	2.3	-0.6	0.4	0.0

¹ Relative importance figures are based on 2011 trade values.

NOTES: Data may be revised in each of the three months after original publication.

Dash = Not available

Table 6. U.S. export price indexes and percent changes for selected categories of goods: April 2012 to April 2013

[2000=100, unless otherwise noted]

Description	Harmonized system	Relative importance Mar. 2013 ¹	Index		Percent change				
			Mar. 2013	Apr. 2013	Annual Apr. 2012 to Apr. 2013	Monthly			
						Dec. 2012 to Jan. 2013	Jan. 2013 to Feb. 2013	Feb. 2013 to Mar. 2013	Mar. 2013 to Apr. 2013
Live animals; animal products.....	I	2.044	217.7	219.8	7.3	-2.7	1.9	-2.0	1.0
Meat & edible meat offal (Dec. 2006=100). . .	02	1.179	169.2	168.9	0.9	-0.8	1.1	0.1	-0.2
Fish and crustaceans, molluscs and other aquatic invertebrates.....	03	0.402	203.3	202.4	-2.9	0.3	-0.7	0.6	-0.4
Vegetable products.....	II	5.387	273.4	260.6	4.2	-1.3	1.4	-1.8	-4.7
Edible fruit and nuts; peel of citrus fruit or melons.....	08	0.986	155.5	147.9	7.7	3.2	1.7	-4.8	-4.9
Cereals.....	10	2.113	313.4	297.4	3.7	-7.9	4.1	-2.8	-5.1
Oilseeds and misc. grains, seeds, fruits, plants, straw and fodder.....	12	1.725	296.3	280.4	0.9	-2.7	3.1	-0.1	-5.4
Animal or vegetable fats and oils (Dec. 2009=100).....	III	0.305	135.1	136.4	-11.7	0.6	2.6	-0.8	1.0
Prepared foodstuffs, beverages, and tobacco.....	IV	2.975	166.9	166.4	6.6	0.4	0.7	-0.7	-0.3
Preparations of vegetables, fruit, nuts or other parts of plants (Dec. 2009=100).....	20	0.342	112.4	113.1	2.3	0.4	0.1	0.4	0.6
Beverages, spirits, and vinegar (Dec. 2008=100).....	22	0.629	113.4	113.3	3.2	2.3	1.2	-0.5	-0.1
Residues and waste from the food industries; prepared animal feed.....	23	0.766	266.3	267.6	18.6	-2.5	0.3	-2.2	0.5
Mineral products.....	V	9.385	309.0	299.5	-11.3	0.7	3.5	-0.3	-3.1
Ores, slag and ash (Dec. 2012=100).....	26	0.471	97.7	96.8	-	-2.0	1.9	-2.2	-0.9
Mineral fuels, oils and residuals, bituminous substances and mineral waxes.....	27	8.733	306.1	296.2	-11.6	0.9	3.7	-0.2	-3.2
Products of the chemical or allied industries.....	VI	11.396	154.3	154.1	-0.7	0.5	0.0	-0.5	-0.1
Inorganic chemicals.....	28	1.008	183.1	183.5	-0.7	0.2	-0.6	-0.3	0.2
Organic chemicals.....	29	3.271	168.0	167.0	-1.8	0.7	0.8	-0.5	-0.6
Pharmaceutical products.....	30	2.674	123.4	122.2	-1.8	0.9	-1.0	-0.9	-1.0
Fertilizers (Dec. 2012=100).....	31	0.381	97.2	99.6	-	-2.1	-2.5	1.8	2.5
Essential oils and resinoids; perfumery cosmetic or toilet preparations.....	33	0.719	138.7	138.7	2.3	0.4	0.0	1.2	0.0
Soap; lubricants; waxes, polishing or scouring products; candles, pastes.....	34	0.444	119.3	120.0	-2.5	-1.2	0.0	-1.6	0.6
Miscellaneous chemical products.....	38	1.729	152.5	152.4	-0.5	1.3	0.8	-1.5	-0.1
Plastics and articles thereof; rubber and articles thereof.....	VII	5.274	151.0	150.8	-1.9	0.9	1.2	0.3	-0.1
Plastics and articles thereof.....	39	4.219	142.8	142.7	-0.6	1.1	1.4	0.3	-0.1
Rubber and articles thereof.....	40	1.055	188.8	188.8	-6.7	0.1	0.3	0.2	0.0
Raw hides, skins, leather, furskins, travel goods, etc.....	VIII	0.396	144.4	146.6	10.6	3.4	1.3	1.0	1.5
Wood, wood charcoal, cork, straw, basketware and wickerwork.....	IX	0.572	112.2	113.6	3.3	0.1	0.5	1.4	1.2
Woodpulp, recovered paper, and paper products.....	X	2.219	120.5	120.4	1.2	2.2	0.0	0.5	-0.1
Woodpulp and recovered paper.....	47	0.603	126.2	125.5	-1.3	6.4	-2.4	2.2	-0.6
Paper and paperboard; articles of paper pulp, paper or paperboard.....	48	1.178	118.5	118.6	0.3	1.0	0.5	-0.3	0.1
Printed material.....	49	0.438	128.9	128.9	7.1	0.3	1.7	0.5	0.0
Textile and textile articles.....	XI	1.802	129.9	130.2	-0.7	1.3	1.8	-0.1	0.2
Cotton, including yarns and woven fabrics thereof.....	52	0.538	145.0	144.6	-7.9	2.8	7.1	-0.5	-0.3
Stone, plaster, cement, asbestos, ceramics, glass etc.....	XIII	0.751	118.0	118.2	0.3	-0.4	0.1	0.1	0.2

See footnotes at end of table.

Table 6. U.S. export price indexes and percent changes for selected categories of goods: April 2012 to April 2013 — Continued
 [2000=100, unless otherwise noted]

Description	Harmonized system	Relative importance Mar. 2013 ¹	Index		Percent change				
			Mar. 2013	Apr. 2013	Annual Apr. 2012 to Apr. 2013	Monthly			
						Dec. 2012 to Jan. 2013	Jan. 2013 to Feb. 2013	Feb. 2013 to Mar. 2013	Mar. 2013 to Apr. 2013
Glass and glassware.....	70	0.385	97.4	97.4	-1.2	-1.5	0.0	0.2	0.0
Pearls, stones, precious metals, imitation jewelry, and coins.....	XIV	5.172	276.7	274.0	-3.5	-1.2	-0.1	-2.0	-1.0
Base metals and articles of base metals.....	XV	5.349	169.4	168.3	-6.3	-0.8	1.1	-1.8	-0.6
Iron and steel.....	72	1.515	195.0	192.4	-14.2	-1.5	2.2	-3.9	-1.3
Articles of iron or steel.....	73	1.306	169.2	169.4	-2.5	-1.5	0.4	-0.1	0.1
Copper and articles thereof.....	74	0.627	250.9	245.7	-7.6	0.4	2.1	-3.6	-2.1
Aluminum and articles thereof.....	76	0.845	124.9	124.1	-3.8	0.6	0.0	-1.5	-0.6
Tools, implements, cutlery, spoons and forks, of base metal; parts thereof.....	82	0.397	131.7	132.4	2.5	-1.0	0.0	-0.1	0.5
Miscellaneous articles of base metal.....	83	0.320	146.3	146.3	3.1	0.0	0.8	-0.3	0.0
Machinery, electrical equipment, TV image and sound recorders, parts, etc.....	XVI	27.771	97.6	97.4	0.1	0.5	0.3	0.0	-0.2
Machinery and mechanical appliances; parts thereof.....	84	16.573	111.5	111.6	0.9	0.6	0.3	0.0	0.1
Electrical machinery and equipment and parts and accessories thereof.....	85	11.198	82.5	82.0	-1.1	0.4	0.4	-0.1	-0.6
Vehicles, aircraft, vessels and associated transport equipment.....	XVII	11.876	127.9	127.8	0.9	0.5	0.2	0.1	-0.1
Motor vehicles and their parts.....	87	8.047	113.7	113.7	0.5	0.4	0.3	0.0	0.0
Optical, photo, measuring, medical & musical instruments; & timepieces.....	XVIII	5.846	107.3	107.2	1.5	0.9	0.0	-0.1	-0.1
Miscellaneous manufactured articles.....	XX	1.329	110.8	110.8	0.5	-0.1	-0.2	0.0	0.0
Furniture; stuffed furnishings; lamps and lighting fittings nesoi;.....	94	0.715	121.0	121.0	1.0	-0.2	-0.3	0.0	0.0
Toys, games and sports equipment; parts and accessories thereof.....	95	0.507	91.0	90.9	-0.3	0.0	0.0	0.1	-0.1

¹ Relative importance figures are based on 2011 trade values.

NOTES: Data may be revised in each of the three months after original publication.

Dash = Not available

Table 7. U.S. import price indexes and percent changes by locality of origin: April 2012 to April 2013
 [2000=100, unless otherwise noted]

Description	Relative importance Mar. 2013 ¹	Index		Percent change				
		Mar. 2013	Apr. 2013	Annual	Monthly			
				Apr. 2012 to Apr. 2013	Dec. 2012 to Jan. 2013	Jan. 2013 to Feb. 2013	Feb. 2013 to Mar. 2013	Mar. 2013 to Apr. 2013
Industrialized Countries²	100.000	132.6	131.8	0.0	0.4	0.5	0.2	-0.6
Nonmanufactured articles.....	11.333	223.7	222.3	2.3	-0.7	2.4	2.1	-0.6
Manufactured articles.....	88.062	125.2	124.5	-0.2	0.5	0.3	0.0	-0.6
Other Countries³	100.000	140.8	139.9	-3.6	0.4	1.3	-0.3	-0.6
Nonmanufactured articles.....	23.214	363.9	356.3	-8.3	2.2	4.4	-0.6	-2.1
Manufactured articles.....	76.443	110.8	110.6	-1.7	-0.1	0.4	-0.1	-0.2
Canada	100.000	151.9	151.0	-0.3	0.1	0.7	0.8	-0.6
Nonmanufactured articles.....	28.495	213.5	212.7	3.8	-0.6	2.6	2.3	-0.4
Manufactured articles.....	70.413	139.6	138.6	-1.6	0.4	0.0	0.2	-0.7
European Union⁴	100.000	135.9	135.8	-0.4	1.6	0.7	-0.7	-0.1
Nonmanufactured articles.....	1.084	377.1	369.8	-8.3	4.0	0.0	-2.0	-1.9
Manufactured articles.....	98.412	132.1	132.0	-0.3	1.6	0.6	-0.7	-0.1
France (Dec. 2003=100)	100.000	122.1	122.1	0.6	0.5	0.0	0.9	0.0
Germany (Dec. 2003=100)	100.000	115.9	115.8	0.7	0.7	0.8	-0.3	-0.1
United Kingdom (Dec. 2003=100)	100.000	129.0	128.3	-6.1	0.6	0.1	-3.3	-0.5
Latin America⁵	100.000	178.6	175.9	-4.6	1.0	2.4	-0.8	-1.5
Nonmanufactured articles.....	32.786	389.5	379.8	-8.0	3.1	6.5	-1.7	-2.5
Manufactured articles.....	66.806	133.4	132.0	-2.4	0.0	0.5	-0.3	-1.0
Mexico (Dec. 2003=100)	100.000	146.0	144.7	-2.9	0.7	1.8	-0.2	-0.9
Nonmanufactured articles (Dec. 2008=100).....	19.842	212.9	206.1	-7.5	3.6	8.4	-0.6	-3.2
Manufactured articles (Dec. 2008=100)....	79.820	94.4	94.1	-1.3	0.1	0.3	-0.1	-0.3
Pacific Rim (Dec. 2003=100)⁶	100.000	103.9	103.8	-1.0	-0.1	-0.1	-0.1	-0.1
China (Dec. 2003=100)	100.000	104.2	104.1	-0.9	-0.1	0.0	-0.2	-0.1
Japan	100.000	102.1	101.5	-0.9	0.0	-0.5	-0.2	-0.6
Asian NICs⁷	100.000	90.0	90.9	0.1	-0.2	0.1	0.1	1.0
ASEAN (Dec. 2003=100)⁸	100.000	103.9	104.7	-1.4	0.1	0.0	-0.4	0.8
Asia Near East (Dec. 2003=100)⁹	100.000	278.2	274.1	-7.9	0.3	1.8	0.7	-1.5

1 Relative figures are based on 2011 trade values.

2 Western Europe, Canada, Japan, Australia, New Zealand and South Africa.

3 Eastern Europe, Latin America, OPEC countries, and other countries in Asia, Africa and the Western Hemisphere.

4 European Union countries.

5 Mexico, Central America, South America and the Caribbean.

6 China, Japan, Australia, Brunei, Indonesia, Macao, Malaysia, New Zealand, Papua New Guinea, Philippines and the Asian Newly Industrialized Countries.

7 Asian Newly Industrialized Countries - Hong Kong, Singapore, South Korea and Taiwan.

8 Association of Southeast Asian Nations - Brunei, Cambodia, Indonesia, Laos, Malaysia, Myanmar, Philippines, Singapore, Thailand and Vietnam.

9 Bahrain, Iran, Iraq, Israel, Jordan, Kuwait, Lebanon, Oman, Qatar, Saudi Arabia, Syria, United Arab Emirates and Yemen.

NOTES: Data may be revised in each of the three months after original publication.

Regions are not mutually exclusive.

Dash = Not available

Table 8. U.S. international price indexes and percent changes for selected transportation services: April 2012 to April 2013

[2000=100, unless otherwise noted]

Description	Relative importance Mar. 2013 ¹	Index		Percent change				
		Mar. 2013	Apr. 2013	Annual Apr. 2012 to Apr. 2013	Monthly			
					Dec. 2012 to Jan. 2013	Jan. 2013 to Feb. 2013	Feb. 2013 to Mar. 2013	Mar. 2013 to Apr. 2013
Air Freight								
Import Air Freight	100.000	174.4	172.8	-2.4	0.2	-0.4	-0.6	-0.9
Europe (Dec. 2003=100).....	22.201	168.1	163.8	0.2	1.9	1.4	0.3	-2.6
Asia.....	73.472	153.3	152.6	-3.2	-0.3	-1.0	-1.0	-0.5
Export Air Freight	100.000	149.0	149.4	-0.6	1.6	-0.3	0.1	0.3
Europe (Dec. 2006=100).....	35.740	133.4	134.1	-1.2	2.6	0.0	0.3	0.5
Inbound Air Freight	100.000	163.7	163.0	1.1	-1.1	-0.7	-0.5	-0.4
Europe (Dec. 2003=100).....	22.196	151.4	149.1	-0.1	1.5	0.5	-0.5	-1.5
Asia.....	67.267	148.3	148.1	2.1	-2.1	-1.2	-0.6	-0.1
Outbound Air Freight	100.000	148.5	148.5	-1.0	-0.1	0.1	0.4	0.0
Europe (Dec. 2003=100).....	27.631	161.1	160.4	-3.2	-0.1	0.0	-0.3	-0.4
Asia.....	52.746	142.8	143.0	-0.3	-0.4	0.1	1.1	0.1
Air Passenger Fares								
Import Air Passenger Fares	100.000	181.7	182.2	1.2	-3.7	-1.2	-1.6	0.3
Europe.....	43.618	206.3	209.2	11.6	1.7	2.4	-4.4	1.4
Asia.....	25.364	147.6	150.4	1.1	-7.7	-6.4	-0.3	1.9
Latin America/Caribbean.....	9.567	167.9	167.9	-7.7	-11.7	0.1	2.6	0.0
Export Air Passenger Fares	100.000	185.6	179.7	-3.6	7.5	-8.2	0.9	-3.2
Europe.....	28.441	221.8	212.8	-5.4	0.2	0.8	1.5	-4.1
Asia.....	28.586	160.4	151.2	-10.1	10.0	-18.0	-1.4	-5.7
Latin America/Caribbean.....	22.622	199.7	193.1	-11.5	6.6	-8.6	2.8	-3.3

¹ Relative importance figures are based on 2011 trade values.

NOTES: Data may be revised in each of the three months after original publication.

Dash = Not available

TECHNICAL NOTE

Import and Export Merchandise and Services Price Indexes -- All indexes use a modified Laspeyres formula and are not seasonally adjusted. Price indexes are reweighted annually, with a two-year lag in the weights. Published series use a base year of 2000=100 where possible. More detailed index series and additional information may be obtained at <http://www.bls.gov/mxp>, or by calling (202) 691-7101.

Merchandise Goods Classification Systems -- The merchandise price indexes are published using three classification systems. Items are classified by end use according to the Bureau of Economic Analysis Classification System, by industry according to the North American Industry Classification System (NAICS), and by product category according to the Harmonized System (HS). While classification by end use and product category are self-explanatory, some notes are in order for classifying items by industry. In the NAICS imports and exports tables, items are classified by output industry, not input industry. As an example, NAICS import index 326 (plastics and rubber products manufacturing) include outputs such as manufactured plastic rather than inputs such as petroleum. The NAICS classification structure also matches the classification system used by the PPI (Producer Price Index) to produce the NAICS primary products indexes.

Import Price Indexes -- Products have been classified by the Harmonized Tariff Schedule of the United States Annotated (TSUSA). Import prices are based on U.S. dollar prices paid by the U.S. importer. The prices are generally either "free on board" (f.o.b.) foreign port or "cost, insurance, and freight" (c.i.f.) U.S. port transaction prices, depending on the practices of the individual industry. The index for crude petroleum is calculated from data collected by the U.S. Department of Energy.

Export Price Indexes -- Products have been classified by the Harmonized Schedule B classification system of the U.S. Bureau of the Census. The prices used are generally either "free alongside ship" (f.a.s.) factory or "free on board" (f.o.b.) transaction prices, depending on the practices of the individual industry. Prices used in the grain index, excluding rice, are obtained from the U.S. Department of Agriculture.

Services Price Indexes -- Starting in September 2008 the Import Air Passenger Fares Indexes represent changes in the average revenue per passenger received by foreign carriers from U.S. residents and are calculated from data obtained from an airline consulting service. These data include tickets sold by travel agencies and travel websites. Tickets sold directly by the airlines are excluded, as are frequent flyer tickets generally. Starting in January 2008 the Export Air Passenger Fares Indexes represent changes in the average revenue per passenger received by U.S. carriers from foreign residents and are calculated from data collected directly from airlines. These data include frequent flyer tickets and those sold by consolidators. Taxes and fees are included in the Import Air Passenger Fares Index and excluded from the Export Air Passenger Fares Index. The Air Freight Indexes are calculated from data collected directly from airlines. These data exclude mail and passenger baggage. The scope of the service being priced is the movement of freight from airport to airport only, and does not include any ground transportation or port service. The Air Freight Indexes are presented using two definitions: Balance of Payments (which represent transactions between U.S. and foreign residents) and International (which represent transactions inbound to and outbound from the U.S.). Fact sheets specifying detailed information for each services industry are available at <http://www.bls.gov/mxp> under "MXP Publications."

Import Indexes by Locality of Origin -- Prices used in these indexes are a subset of the data collected for the Import Price Indexes. Beginning with January 2002, the indexes are defined by locality of origin using a nomenclature based upon the North American Industry Classification System (NAICS). Nonmanufactured goods are defined as NAICS 11 and 21 and manufactured goods are defined as NAICS 31-33.

Revision Policy -- To reflect the availability of late reports and corrections by respondents, monthly data may be revised in each of the three months after original publication. After three months, no further data revisions take place. So, for example, data released in the January release will be subject to revision in the releases for February, March, and April.

Uses of the Data -- The primary use of the indexes is to deflate trade statistics, notably the foreign trade sector of the National Income and Product Accounts constructed by the Department of Commerce. Other published indexes are useful for general market analysis. For trade in international services, Balance of Payments indexes are used for deflating National Income and Product Accounts, while International indexes are more appropriate for market analysis. Merchandise and services indexes also can be used to study U.S. competitiveness and to compute price elasticities, and the merchandise import indexes by country or region of origin are useful in terms of trade analysis.

E-Mail Subscription -- The U.S. Import and Export Price Indexes news release is available through an e-mail subscription service at (<http://www.bls.gov/bls/list.htm>).

Additional Information -- More detailed data are available on the Import/Export Price Indexes home page at (<http://www.bls.gov/mxp>). Flat Files and the FTP server are available for users requiring access to either a large volume of time series data or other related documentation. The FTP site can be accessed at <ftp://ftp.bls.gov>. For technical assistance in using the BLS Internet site, send e-mail to (labstat.helpdesk@bls.gov). For Import/Export Price Index data requests, send e-mail to (mxpinfo@bls.gov).

Information from this release will be made available to sensory impaired individuals upon request. Voice phone: 202-691-5200; Federal Relay Service: 1-800-877-8339.