

Transmission of material in this release is embargoed until  
8:30 a.m. (EST) Friday, February 13, 2015

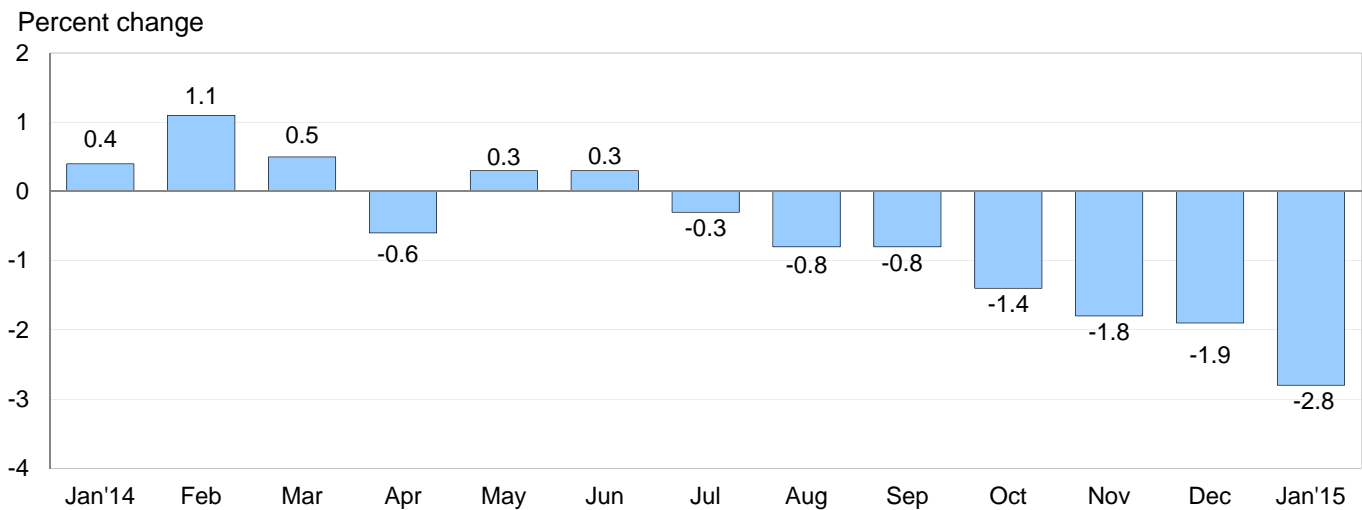
USDL-15-0212

Technical information: (202) 691-7101 • MXPinfo@bls.gov • www.bls.gov/mxp  
Media contact: (202) 691-5902 • PressOffice@bls.gov

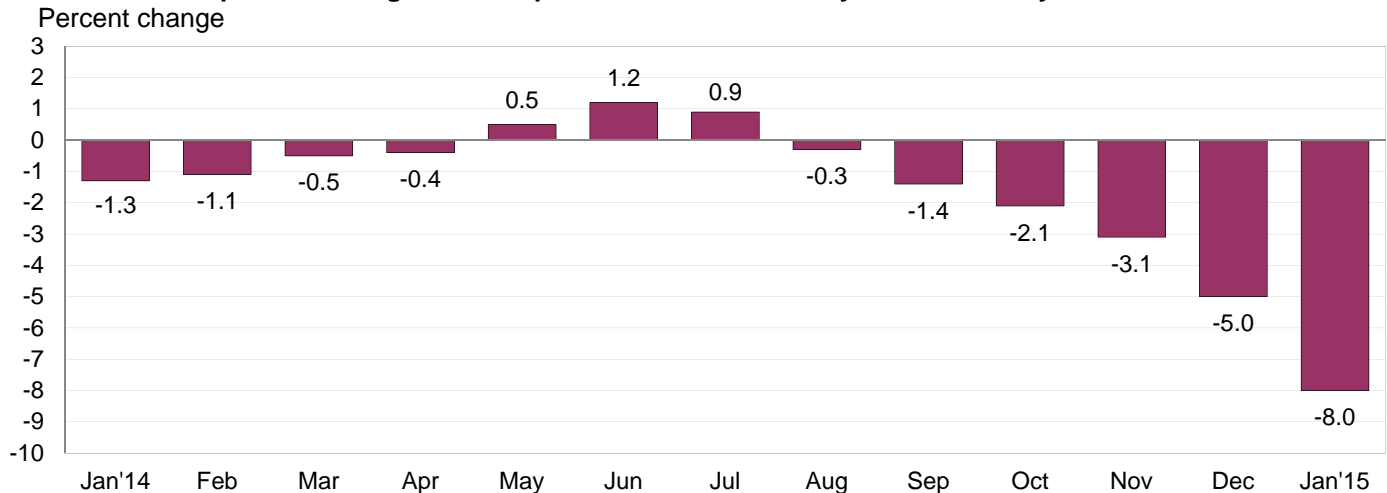
### U.S. IMPORT AND EXPORT PRICE INDEXES – JANUARY 2015

U.S. import prices fell 2.8 percent in January, after declining 1.9 percent in December and 1.8 percent in November, the U.S. Bureau of Labor Statistics reported today. Decreasing fuel prices drove each of the monthly drops. The price index for U.S. exports decreased 2.0 percent in January, and has not recorded a monthly advance since July.

**Chart 1. One-month percent change in the Import Price Index: January 2014 – January 2015**



**Chart 2. 12-month percent change in the Import Price Index: January 2014 – January 2015**



**All Imports:** The price index for U.S. imports declined 2.8 percent in January. The index has not recorded a monthly advance since June 2014, and the January drop was the largest 1-month decrease since the index fell 4.6 percent in December 2008. U.S. import prices decreased 8.0 percent between January 2014 and January 2015, the largest 12-month decline since the index fell 12.0 percent in September 2009.

**Fuel Imports:** Fuel prices fell 16.9 percent in January following declines of 11.3-percent in December and 9.2-percent in October. The January decrease was the largest monthly drop for the index since a 22.2-percent decline in December 2008. Lower petroleum and natural gas prices, down 17.7 percent and 8.8 percent, respectively, each contributed to the January decrease in overall fuel prices. The price index for import fuel declined 39.0 percent over the past 12 months, the largest year-over-year drop since the index fell 41.0 percent between August 2008 and August 2009. In January, the 12-month decline in fuel prices was led by a 40.1-percent decrease in petroleum prices and a 29.0-percent drop in natural gas prices.

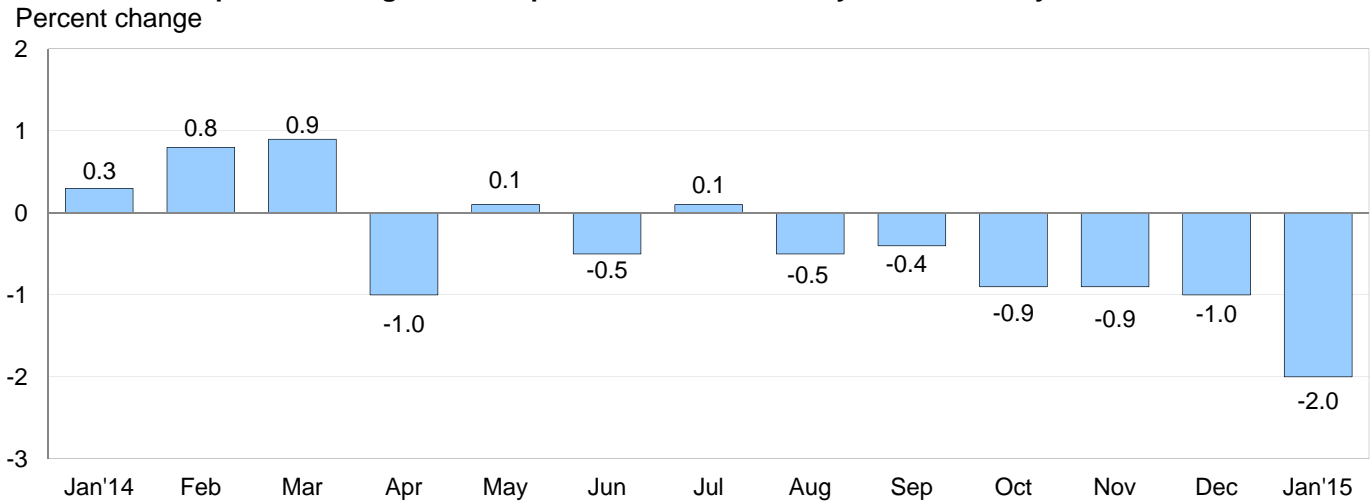
**All Imports Excluding Fuel:** Prices for nonfuel imports fell 0.7 percent in January and have not recorded a monthly advance since July 2014. The January decline matches the 0.7-percent drop in January 2009, and those were the largest 1-month decreases since the index fell 1.1 percent in December 2008. Decreases in prices for each of the major finished goods categories; nonfuel industrial supplies and materials; and foods, feeds, and beverages all contributed to the overall decline in nonfuel import prices. The price index for nonfuel imports decreased 0.9 percent for the year ended in January.

**Table A. Percent change in Import and Export Price Indexes, selected categories**

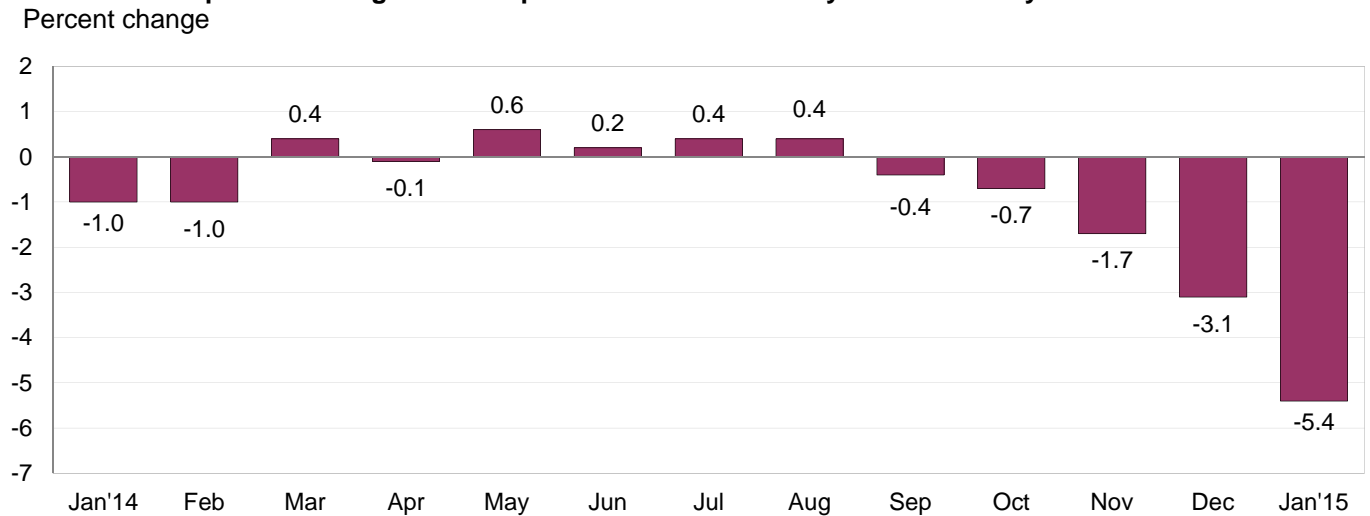
Month	IMPORTS			EXPORTS		
	All imports	Fuel imports	Nonfuel imports	All exports	Agricultural exports	Non-agricultural exports
<b>2014</b>						
January.....	0.4	0.8	0.3	0.3	0.0	0.4
February.....	1.1	5.9	0.0	0.8	1.4	0.6
March.....	0.5	1.0	0.3	0.9	2.8	0.7
April.....	-0.6	-2.6	0.0	-1.0	1.5	-1.2
May.....	0.3	1.2	0.0	0.1	0.3	0.0
June.....	0.3	1.6	-0.1	-0.5	-1.9	-0.3
July.....	-0.3	-1.5	0.1	0.1	-1.8	0.2
August.....	-0.8	-3.8	0.0	-0.5	-3.1	-0.2
September.....	-0.8	-3.6	-0.2	-0.4	-1.6	-0.2
October.....	-1.4	-6.8 <sup>r</sup>	-0.1	-0.9	-2.2	-0.7
November.....	-1.8	-9.2 <sup>r</sup>	-0.3	-0.9 <sup>r</sup>	0.1 <sup>r</sup>	-1.0
December.....	-1.9 <sup>r</sup>	-11.3 <sup>r</sup>	-0.1	-1.0 <sup>r</sup>	-0.7	-1.0 <sup>r</sup>
<b>2015</b>						
January.....	-2.8	-16.9	-0.7	-2.0	-1.2	-2.1
Jan. 2013 to 2014.....	-1.3	-2.2	-1.1	-1.0	-5.3	-0.5
Jan. 2014 to 2015.....	-8.0	-39.0	-0.9	-5.4	-6.3	-5.3

r Revised

**Chart 3. One-month percent change in the Export Price Index: January 2014 – January 2015**



**Chart 4. 12-month percent change in the Export Price Index: January 2014 – January 2015**



**All Exports:** U.S. export prices declined 2.0 percent in January after declines of 1.0-percent in December and 0.9-percent in both November and October. The January drop matched a 2.0-percent decline in October 2011, the largest monthly decrease since the index fell 2.2 percent in December 2008. Both agricultural and nonagricultural prices contributed to the overall drop in January. The price index for overall exports fell 5.4 percent over the past 12 months, the largest year-over-year decline since the index decreased 5.6 percent in September 2009.

**Agricultural Exports:** Agricultural prices decreased 1.2 percent in January, after a 0.7-percent decline in December. The January drop was driven by a 3.2-percent decrease in meat prices, a 6.8-percent fall in wheat prices, and a 3.4-percent drop in fruit prices. Prices for overall agricultural exports declined 6.3 percent for the year ended in January, led by lower prices for soybeans and corn.

**All Exports Excluding Agriculture:** The price index for nonagricultural exports decreased 2.1 percent in January following declines of 1.0-percent in both December and November. The drop in January was the largest 1-month decrease since the index fell 2.8 percent in November 2008. The January decrease was driven by a sharp drop in nonagricultural industrial supplies and materials prices, although lower prices for consumer goods and automotive vehicles also contributed to the overall decline. Nonagricultural prices fell 5.3 percent over the past year.

## SELECTED JANUARY HIGHLIGHTS

### Import Prices

**Imports by Locality of Origin:** Import prices from China fell 0.3 percent in January, after recording no change in each of the previous 4 months. The decline was the largest monthly drop since the index fell 0.6 percent in May 2013. Prices for imports from Japan decreased 0.7 percent in January following a 0.5-percent decline in December. The January decrease was the largest 1-month drop since the index fell 0.8 percent in April 2013. The price indexes for imports from Canada, the European Union, and Mexico also decreased in January led by lower fuel prices. Import prices from Canada fell 4.8 percent for the month, while prices for imports from the European Union and Mexico decreased 1.0 percent and 2.1 percent, respectively.

**Nonfuel Industrial Supplies and Materials:** Nonfuel industrial supplies and materials prices fell 1.2 percent in January, the largest monthly decline since a 1.7-percent drop in July 2013. The January decrease was driven by a 2.2-percent decline in chemicals prices and a 1.9-percent drop in unfinished metals prices.

**Finished Goods:** Each of the major finished goods categories declined in January. Capital goods prices decreased 0.4 percent, the largest 1-month drop since the index fell 0.5 percent in March 2009. Lower prices for industrial service machinery and computers, peripherals, and semiconductors led the January decline. Consumer goods prices decreased 0.3 percent in January, while prices for automotive vehicles fell 0.5 percent.

**Foods, Feeds, and Beverages:** The price index for foods, feeds, and beverages decreased 2.2 percent, after rising 0.7 percent the previous month. The January decline was led by a 17.0-percent downturn in vegetable prices.

**Transportation Services:** Import air passenger fares fell 6.8 percent in January following a 7.9-percent increase the previous month. The January drop was led by a 14.4-percent decline in Asian fares and was the largest monthly decrease since a 7.9-percent decline in August 2013. The index for import air passenger fares rose 2.3 percent over the past year. Import air freight prices ticked up 0.1 percent in January, the first advance since the index increased 0.3 percent in August 2014. Prices for import air freight fell 5.6 percent for the year ended in January.

### Export Prices

**Nonagricultural Industrial Supplies and Materials:** Prices for nonagricultural industrial supplies and materials declined 6.1 percent in January, after decreasing 3.1 percent the previous month. The January drop was the largest monthly decline since the index fell 8.3 percent in November 2008, and was led by an 18.0-percent drop in fuel prices.

**Finished Goods:** Consumer goods prices fell 0.8 percent in January, driven by a 3.2-percent decrease in the price index for medicinal, dental, and pharmaceutical materials. In January, automotive vehicle prices edged down 0.1 percent, while prices for capital goods ticked up 0.1 percent.

**Transportation Services:** Export air passenger fares rose 1.1 percent in January, after increasing 7.8 percent in December. Despite the recent advances, the index for export air passenger fares declined 3.8 percent for the year ended in January. Prices for export air freight increased 3.0 percent in January following a 1.7-percent decline the previous month. The January advance was the largest 1-month rise since the index increased 5.8 percent in May 2014. Export air freight prices rose 6.4 percent over the past 12 months.

---

**Import and Export Price Index data for February 2015 are scheduled for release on Thursday, March 12, 2015 at 8:30 a.m. (EDT).**

**Table 1. U.S. import price indexes and percent changes for selected categories of goods: January 2014 to January 2015**

[2000=100, unless otherwise noted]

Description	End Use	Relative importance Dec. 2014 <sup>1</sup>	Index		Percent change				
			Dec. 2014	Jan. 2015	Annual	Monthly			
					Jan. 2014 to Jan. 2015	Sept. 2014 to Oct. 2014	Oct. 2014 to Nov. 2014	Nov. 2014 to Dec. 2014	Dec. 2014 to Jan. 2015
<b>All commodities</b> .....		100.000	130.9	127.2	-8.0	-1.4	-1.8	-1.9	-2.8
<b>All imports excluding food and fuels (Dec. 2010=100)</b> .....		80.615	101.6	101.0	-1.1	-0.2	-0.3	-0.1	-0.6
<b>All imports excluding petroleum</b> .....		87.448	115.1	114.3	-1.2	-0.2	-0.3	0.0	-0.7
<b>All imports excluding fuels (Dec. 2001=100)</b> .....		86.508	119.0	118.2	-0.9	-0.1	-0.3	-0.1	-0.7
<b>Foods, feeds, &amp; beverages</b> .....	0	5.893	182.2	178.2	0.7	1.1	-0.5	0.7	-2.2
Agricultural foods, feeds & beverages, excluding distilled beverages.....	00	4.588	201.7	196.4	2.3	1.2	-0.4	1.3	-2.6
Nonagricultural foods (fish, distilled beverages).....	01	1.305	137.7	136.8	-4.5	0.5	-1.1	-1.6	-0.7
<b>Industrial supplies &amp; materials</b> .....	1	27.066	204.0	185.5	-23.9	-4.3	-5.6	-6.4	-9.1
Industrial supplies & materials excluding petroleum.....		14.514	158.2	155.6	-4.1	-0.6	-0.8	0.1	-1.6
Industrial supplies & materials excluding fuels (Dec. 2001=100).....		13.574	176.9	174.7	-2.3	-0.7	-0.8	-0.4	-1.2
Industrial supplies & materials, durable....		8.052	164.2	162.7	-1.9	-1.8	-1.2	-0.1	-0.9
Industrial supplies & materials nondurable excluding petroleum.....		5.522	150.5	146.7	-6.6	0.9	-0.4	0.5	-2.5
Fuels & lubricants.....	10	13.493	240.1	199.5	-39.0	-6.8	-9.2	-11.3	-16.9
Petroleum & petroleum products.....	100	12.553	260.6	214.4	-40.1	-7.2	-9.7	-12.4	-17.7
Crude.....	10000	9.099	264.8	220.8	-39.8	-6.7	-10.1	-13.6	-16.6
Fuels, n.e.s.-coals & gas.....	101	0.749	138.2	127.7	-25.1	-1.1	-1.7	8.6	-7.6
Gas-natural.....	10110	0.590	126.7	115.5	-29.0	-1.1	-2.0	10.7	-8.8
Paper & paper base stocks.....	11	0.579	112.8	112.1	-1.1	-0.3	-0.2	0.1	-0.6
Materials associated with nondurable supplies & materials.....	12	5.013	168.1	164.7	-3.2	1.0	-0.3	-0.8	-2.0
Selected building materials.....	13	1.182	140.6	140.8	-1.2	-0.7	-0.6	-0.1	0.1
Unfinished metals related to durable goods.....	14	3.495	228.9	224.6	-4.0	-3.5	-2.1	0.0	-1.9
Finished metals related to durable goods.....	15	1.674	156.9	155.9	0.1	-0.1	-0.8	-0.1	-0.6
Nonmetals related to durable goods.....	16	1.631	111.5	112.0	0.7	-0.3	-0.2	-0.3	0.4
<b>Capital goods</b> .....	2	26.613	92.0	91.6	-1.0	-0.1	-0.2	-0.1	-0.4
Electric generating equipment.....	20	3.258	120.1	119.7	0.4	-0.2	0.0	-0.1	-0.3
Nonelectrical machinery.....	21	21.036	84.5	84.1	-1.3	-0.1	-0.2	-0.1	-0.5
Transportation equipment excluding motor vehicles (Dec. 2001=100).....	22	2.320	136.8	136.9	0.6	-0.1	0.1	0.1	0.1
<b>Automotive vehicles, parts &amp; engines</b> .....	3	14.833	112.6	112.0	-1.1	0.0	0.0	0.0	-0.5
<b>Consumer goods, excluding automobiles</b> .....	4	25.595	107.9	107.6	-0.4	-0.2	-0.1	-0.1	-0.3
Nondurables, manufactured.....	40	12.135	119.0	118.5	0.6	0.0	0.1	0.1	-0.4
Durables, manufactured.....	41	12.037	96.7	96.5	-1.4	-0.4	0.0	-0.3	-0.2
Nonmanufactured consumer goods.....	42	1.423	119.0	119.1	0.5	0.0	-0.5	-1.2	0.1

<sup>1</sup> Relative importance figures are based on 2013 trade values.

NOTES: Data may be revised in each of the three months after original publication.

Dash = Not available

**Table 2. U.S. export price indexes and percent changes for selected categories of goods: January 2014 to January 2015**

[2000=100, unless otherwise noted]

Description	End Use	Relative importance Dec. 2014 <sup>1</sup>	Index		Percent change				
			Dec. 2014	Jan. 2015	Annual	Monthly			
					Jan. 2014 to Jan. 2015	Sept. 2014 to Oct. 2014	Oct. 2014 to Nov. 2014	Nov. 2014 to Dec. 2014	Dec. 2014 to Jan. 2015
<b>All commodities.....</b>		100.000	128.2	125.6	-5.4	-0.9	-0.9	-1.0	-2.0
<b>Agricultural commodities.....</b>		9.396	201.7	199.2	-6.3	-2.2	0.1	-0.7	-1.2
<b>All exports excluding food and fuels (Dec. 2010=100).....</b>		82.480	101.3	100.9	-1.0	-0.3	-0.4	-0.2	-0.4
<b>Nonagricultural commodities.....</b>		90.604	122.8	120.2	-5.3	-0.7	-1.0	-1.0	-2.1
<b>Foods, feeds, &amp; beverages.....</b>	0	8.731	203.8	200.5	-5.6	-2.1	0.1	-0.9	-1.6
Agricultural foods, feeds & beverages, excluding distilled beverages.....	00	8.077	206.1	202.1	-6.3	-2.3	0.2	-0.9	-1.9
Nonagricultural foods (fish, distilled beverages).....	01	0.654	186.2	191.4	3.6	-0.4	-1.8	-1.1	2.8
<b>Industrial supplies &amp; materials.....</b>	1	32.004	162.5	153.2	-14.7	-2.0	-2.6	-2.9	-5.7
Industrial supplies & materials, durable....		11.100	164.9	164.4	-3.5	-1.4	-1.7	-0.1	-0.3
Industrial supplies & materials, nondurable.....		20.903	162.0	148.1	-20.2	-2.3	-3.0	-4.4	-8.6
Agricultural industrial supplies & materials.....	10	1.319	182.3	188.5	-6.4	-1.9	-0.3	0.5	3.4
<b>Nonagricultural industrial supplies &amp; materials.....</b>		30.685	161.9	152.1	-15.0	-2.1	-2.6	-3.1	-6.1
Fuels & lubricants.....	11	8.789	204.1	167.4	-38.1	-4.6	-6.2	-9.0	-18.0
Nonagricultural supplies & materials excluding fuels & building materials....	12	20.891	161.5	159.3	-3.7	-0.9	-1.3	-0.7	-1.4
Selected building materials.....	13	1.005	121.2	121.6	-5.5	-0.2	0.3	-0.4	0.3
<b>Capital goods.....</b>	2	36.943	107.3	107.4	0.8	0.0	-0.1	0.1	0.1
Electrical generating equipment.....	20	3.772	115.4	115.2	0.2	-0.5	0.1	-0.1	-0.2
Nonelectrical machinery.....	21	25.344	95.2	95.3	0.0	-0.2	-0.1	0.0	0.1
Transportation equipment excluding motor vehicles (Dec. 2001=100).....	22	7.826	158.4	159.2	3.9	0.9	0.0	0.3	0.5
<b>Automotive vehicles, parts &amp; engines.....</b>	3	9.957	114.1	114.0	0.3	0.2	0.0	-0.1	-0.1
<b>Consumer goods, excluding automotives.....</b>	4	12.365	114.2	113.3	-1.4	-0.4	-0.3	-0.2	-0.8
Nondurables, manufactured.....	40	5.559	111.5	109.6	-2.6	-0.5	-0.5	0.5	-1.7
Durables, manufactured.....	41	5.225	111.1	110.8	-1.4	-0.3	-0.2	0.0	-0.3

<sup>1</sup> Relative importance figures are based on 2013 trade values.

NOTES: Data may be revised in each of the three months after original publication.

Dash = Not available

**Table 3. U.S. import price indexes and percent changes for selected categories of goods: January 2014 to January 2015**

[December 2005=100, unless otherwise noted]

Description	NAICS	Relative importance Dec. 2014 <sup>1</sup>	Index		Percent change				
			Dec. 2014	Jan. 2015	Annual Jan. 2014 to Jan. 2015	Monthly			
						Sept. 2014 to Oct. 2014	Oct. 2014 to Nov. 2014	Nov. 2014 to Dec. 2014	Dec. 2014 to Jan. 2015
<b>Nonmanufactured articles.....</b>		12.051	125.0	107.5	-34.3	-5.0	-8.7	-10.2	-14.0
<b>Agriculture, forestry, fishing and hunting.....</b>	11	2.071	186.2	177.4	1.8	4.0	-1.8	2.4	-4.7
Crop production.....	111	1.667	197.7	186.1	3.7	5.4	-2.2	3.5	-5.9
Animal production (Dec. 2014=100).....	112	0.234	100.0	97.6	—	—	—	—	-2.4
Forestry and logging (Dec. 2012=100).....	113	0.112	68.1	68.4	-25.5	-5.0	-1.3	0.3	0.4
<b>Mining.....</b>	21	9.980	118.0	99.3	-38.8	-6.2	-9.6	-12.1	-15.8
Mining (except oil and gas) (Dec. 2006=100).....	212	0.237	117.9	115.8	-6.7	-3.4	-0.2	-0.1	-1.8
<b>Manufactured articles.....</b>		87.617	114.3	112.7	-2.8	-0.6	-0.5	-0.5	-1.4
<b>Manufactured goods, part 1.....</b>	31	11.567	126.1	125.6	0.8	-0.2	-0.2	-0.2	-0.4
Food manufacturing.....	311	3.301	159.5	157.6	-0.1	-0.6	-0.7	-0.4	-1.2
Beverage and tobacco product manufacturing.....	312	1.033	117.3	117.4	2.2	-0.1	0.0	-0.1	0.1
Textile mills (Dec. 2011=100).....	313	0.394	103.1	102.6	0.5	0.7	-0.1	-0.2	-0.5
Textile product mills.....	314	0.857	113.7	113.7	-0.8	-0.2	0.2	-0.4	0.0
Apparel manufacturing.....	315	4.173	112.1	112.0	1.3	0.0	0.1	0.0	-0.1
Leather and allied product manufacturing.....	316	1.808	124.0	124.2	1.8	0.2	0.0	0.1	0.2
<b>Manufactured goods, part 2.....</b>	32	17.640	129.1	122.9	-10.2	-1.9	-1.7	-1.9	-4.8
Wood product manufacturing.....	321	0.716	119.8	120.2	-1.6	-1.1	-0.9	0.1	0.3
Paper manufacturing.....	322	1.079	111.3	111.0	0.2	-0.2	0.0	0.4	-0.3
Petroleum and coal products manufacturing.....	324	3.226	118.0	93.5	-40.4	-10.0	-8.0	-8.7	-20.8
Chemical manufacturing.....	325	9.358	137.3	134.9	-1.5	0.9	-0.1	-0.4	-1.7
Plastics and rubber products manufacturing.....	326	2.132	121.9	121.2	-1.9	0.0	0.2	-0.1	-0.6
Nonmetallic mineral product manufacturing.....	327	0.929	130.1	130.2	0.0	0.2	0.1	-0.5	0.1
<b>Manufactured goods, part 3.....</b>	33	58.411	107.1	106.6	-1.1	-0.4	-0.2	-0.2	-0.5
Primary metal manufacturing.....	331	4.190	152.4	149.8	-2.9	-2.6	-1.7	-0.2	-1.7
Fabricated metal product manufacturing.....	332	2.909	127.3	126.9	0.5	0.2	-0.3	-0.2	-0.3
Machinery manufacturing.....	333	6.956	120.2	119.8	-1.5	-0.5	-0.1	-0.2	-0.3
Computer and electronic product manufacturing.....	334	17.147	79.2	78.8	-1.9	-0.1	-0.1	-0.3	-0.5
Electrical equipment, appliance, and component manufacturing.....	335	4.538	119.0	118.6	0.1	-0.2	0.3	-0.3	-0.3
Transportation equipment manufacturing.....	336	15.886	111.3	110.9	-0.7	0.0	0.0	-0.1	-0.4
Furniture and related product manufacturing.....	337	1.510	116.1	116.2	1.1	-0.1	0.0	-0.4	0.1
Miscellaneous manufacturing.....	339	5.273	120.9	120.6	-0.4	-0.5	-0.1	-0.4	-0.2

<sup>1</sup> Relative importance figures are based on 2013 trade values.

NOTES: Data may be revised in each of the three months after original publication.

Dash = Not available

**Table 4. U.S. export price indexes and percent changes for selected categories of goods: January 2014 to January 2015**

[December 2005=100, unless otherwise noted]

Description	NAICS	Relative importance Dec. 2014 <sup>1</sup>	Index		Percent change				
			Dec. 2014	Jan. 2015	Annual Jan. 2014 to Jan. 2015	Monthly			
						Sept. 2014 to Oct. 2014	Oct. 2014 to Nov. 2014	Nov. 2014 to Dec. 2014	Dec. 2014 to Jan. 2015
<b>Nonmanufactured articles.....</b>		6.902	147.0	140.9	-16.5	-3.6	2.2	0.6	-4.1
<b>Agriculture, forestry, fishing and hunting.....</b>	11	4.304	172.0	171.7	-11.4	-4.5	2.0	0.4	-0.2
Crop production.....	111	4.073	178.8	178.2	-10.9	-4.8	2.2	0.5	-0.3
<b>Mining.....</b>	21	2.598	90.0	80.3	-25.2	-1.8	2.7	1.1	-10.8
Mining (except oil and gas).....	212	1.256	95.0	92.9	-8.3	-1.6	-0.1	-0.9	-2.2
<b>Manufactured articles.....</b>		91.431	117.0	114.9	-4.5	-0.7	-1.0	-1.1	-1.8
<b>Manufactured goods, part 1.....</b>	31	7.311	151.3	149.2	-1.5	-0.6	-1.0	-1.4	-1.4
Food manufacturing.....	311	5.122	175.0	171.2	-1.2	-0.5	-1.5	-1.8	-2.2
Beverage and tobacco product manufacturing.....	312	0.580	113.3	116.8	-3.9	-2.4	3.7	1.3	3.1
<b>Manufactured goods, part 2.....</b>	32	25.018	120.6	112.7	-15.6	-1.9	-2.6	-3.6	-6.6
Paper manufacturing.....	322	1.857	126.0	124.6	1.0	0.4	0.0	0.2	-1.1
Petroleum and coal products manufacturing.....	324	6.048	121.5	96.1	-44.2	-5.8	-8.0	-11.9	-20.9
Chemical manufacturing.....	325	13.356	124.6	121.2	-5.4	-0.7	-0.9	-1.1	-2.7
Plastics and rubber products manufacturing.....	326	2.182	118.4	118.9	-0.1	-0.2	-0.2	-0.3	0.4
Nonmetallic mineral product manufacturing.....	327	0.798	112.2	112.5	0.4	-0.1	0.1	0.2	0.3
<b>Manufactured goods, part 3.....</b>	33	59.101	112.4	112.4	0.2	-0.2	-0.3	0.1	0.0
Primary metal manufacturing.....	331	4.732	142.6	142.5	-1.5	-2.6	-2.2	0.8	-0.1
Fabricated metal product manufacturing.....	332	2.901	128.3	129.4	-1.7	0.1	-0.2	0.3	0.9
Machinery manufacturing.....	333	11.107	124.3	124.5	1.0	0.0	0.2	0.1	0.2
Computer and electronic product manufacturing.....	334	13.989	86.7	86.6	-1.5	-0.5	-0.3	0.0	-0.1
Electrical equipment, appliance, and component manufacturing.....	335	3.647	114.8	115.1	0.8	0.3	-0.1	-0.1	0.3
Transportation equipment manufacturing..	336	16.888	120.7	120.8	1.9	0.5	0.0	0.1	0.1
Furniture and related product manufacturing (Dec. 2011=100).....	337	0.371	109.6	110.3	2.5	0.5	0.0	0.4	0.6
Miscellaneous manufacturing.....	339	5.467	124.0	123.4	0.2	-0.3	0.2	-0.9	-0.5

<sup>1</sup> Relative importance figures are based on 2013 trade values.

NOTES: Data may be revised in each of the three months after original publication.

Dash = Not available



**Table 5. U.S. import price indexes and percent changes for selected categories of goods: January 2014 to January 2015**

[2000=100, unless otherwise noted]

Description	Harmonized system	Relative importance Dec. 2014 <sup>1</sup>	Index		Percent change				
			Dec. 2014	Jan. 2015	Annual	Monthly			
					Jan. 2014 to Jan. 2015	Sept. 2014 to Oct. 2014	Oct. 2014 to Nov. 2014	Nov. 2014 to Dec. 2014	Dec. 2014 to Jan. 2015
<b>Live animals; animal products.....</b>	I	1.364	197.8	194.2	0.5	0.0	-1.1	-1.7	-1.8
Meat and edible meat offal.....	02	0.325	253.6	245.5	9.2	-2.9	-1.5	-3.5	-3.2
Fish and crustaceans, molluscs and other aquatic invertebrates.....	03	0.692	136.8	135.5	-8.7	1.1	-1.8	-1.8	-1.0
<b>Vegetable products.....</b>	II	1.991	214.0	200.9	-0.6	4.3	-1.8	4.7	-6.1
Edible vegetables, roots, and tubers.....	07	0.555	489.7	383.3	-4.4	19.3	-7.3	18.6	-21.7
Edible fruit and nuts; peel of citrus fruit or melons.....	08	0.471	97.5	101.0	-8.7	-4.2	4.5	-2.1	3.6
Coffee, tea, mate and spices.....	09	0.386	261.3	265.0	20.5	3.9	-2.2	1.2	1.4
<b>Animal or vegetable fats and oils (Dec. 2009=100).....</b>	III	0.267	109.0	110.5	-2.0	1.4	-0.4	-2.8	1.4
<b>Prepared foodstuffs, beverages, and tobacco.....</b>	IV	2.703	162.5	161.8	1.8	-0.4	-0.6	0.4	-0.4
Sugars and sugar confectionary (Dec. 2012=100).....	17	0.180	91.7	91.5	6.8	-0.6	0.0	1.8	-0.2
Cocoa and cocoa preparations (Dec. 2009=100).....	18	0.238	110.0	112.2	11.2	1.5	-6.6	-0.8	2.0
Preparations of cereals, flour, starch or milk; bakers' wares (Dec. 2007=100).....	19	0.270	133.6	134.0	2.1	0.5	-0.1	0.0	0.3
Preparations of vegetables, fruit, nuts, or other parts of plants.....	20	0.338	167.3	164.4	-0.1	-1.9	0.7	0.6	-1.7
Beverages, spirits, and vinegar.....	22	1.008	127.8	127.7	1.7	0.0	-0.1	-0.1	-0.1
<b>Mineral products.....</b>	V	13.369	241.4	200.8	-38.8	-7.0	-9.2	-11.3	-16.8
Mineral fuels, oils and residuals, bituminous substances and mineral waxes.....	27	13.114	238.4	197.7	-39.2	-7.1	-9.3	-11.5	-17.1
<b>Products of the chemical or allied industries.....</b>	VI	8.548	152.1	148.7	-2.0	0.5	-0.1	-0.3	-2.2
Inorganic chemicals.....	28	0.723	338.7	318.8	3.3	6.2	2.5	-0.5	-5.9
Organic chemicals.....	29	2.513	131.7	122.8	-10.2	-0.7	-0.6	-1.3	-6.8
Pharmaceutical products.....	30	3.294	134.3	135.8	2.3	-0.1	-0.1	0.3	1.1
Fertilizers (Dec. 2009=100).....	31	0.387	116.8	116.8	7.0	7.6	-1.5	1.5	0.0
Tanning extracts; dye, pigments, varnish, paints & putty (Dec. 2011=100).....	32	0.209	105.3	104.4	4.5	0.7	-0.2	-0.5	-0.9
Miscellaneous chemical products.....	38	0.537	91.7	90.6	-3.1	-0.4	-0.6	-0.5	-1.2
<b>Plastics and articles thereof; rubber and articles thereof.....</b>	VII	3.355	146.0	145.0	-2.8	0.2	0.1	-0.3	-0.7
Plastics and articles thereof.....	39	2.168	149.4	149.5	0.1	0.7	0.1	-0.7	0.1
Rubber and articles thereof.....	40	1.187	141.6	138.7	-7.9	-0.6	0.1	0.4	-2.0
<b>Raw hides, skins, leather, furskins, travel goods, etc.....</b>	VIII	0.691	128.0	128.3	0.9	0.0	-0.1	0.2	0.2
Articles of leather; travel goods, bags, etc. of various materials.....	42	0.643	130.4	130.7	1.6	0.0	-0.1	0.2	0.2
<b>Wood, wood charcoal, cork, straw, basketware and wickerwork.....</b>	IX	0.741	145.2	145.6	-1.8	-0.9	-0.9	0.0	0.3
Wood and articles of wood; wood charcoal (Dec. 2014=100).....	44	0.705	100.0	100.2	-	-	-	-	0.2
<b>Woodpulp, recovered paper, and paper products.....</b>	X	1.122	113.3	113.1	-0.8	-0.3	0.0	0.3	-0.2
Paper and paperboard; articles of paper pulp, paper or paperboard.....	48	0.745	106.9	107.1	-0.3	0.0	-0.2	0.1	0.2
<b>Textile and textile articles.....</b>	XI	5.269	114.9	114.8	0.7	0.0	0.1	-0.2	-0.1

See footnotes at end of table.

**Table 5. U.S. import price indexes and percent changes for selected categories of goods: January 2014 to January 2015 — Continued**  
 [2000=100, unless otherwise noted]

Description	Harmonized system	Relative importance Dec. 2014 <sup>1</sup>	Index		Percent change				
			Dec. 2014	Jan. 2015	Annual	Monthly			
					Jan. 2014 to Jan. 2015	Sept. 2014 to Oct. 2014	Oct. 2014 to Nov. 2014	Nov. 2014 to Dec. 2014	Dec. 2014 to Jan. 2015
Articles of apparel and clothing accessories, knitted or crocheted.....	61	2.099	104.0	103.9	1.2	0.0	0.1	0.0	-0.1
Articles of apparel and clothing accessories, not knitted or crocheted.....	62	1.888	120.3	120.3	1.3	-0.1	0.2	-0.1	0.0
Made-up or worn textile articles.....	63	0.618	107.6	107.4	-0.6	-0.3	0.2	-0.1	-0.2
<b>Headgear, umbrellas, artificial flowers, etc...</b>	XII	1.432	122.7	122.7	1.4	0.2	0.0	0.1	0.0
Footwear and parts of such articles.....	64	1.247	122.0	122.1	1.6	0.2	0.0	0.1	0.1
<b>Stone, plaster, cement, asbestos, ceramics, glass etc.....</b>	XIII	0.865	132.6	132.4	-0.6	0.0	0.1	-0.5	-0.2
Ceramic products.....	69	0.260	139.3	138.6	-1.6	0.1	-0.1	-1.6	-0.5
Glass and glassware.....	70	0.302	129.2	129.1	-0.8	0.0	-0.2	-0.1	-0.1
<b>Pearls, stones, precious metals, imitation jewelry, and coins.....</b>	XIV	2.953	172.9	173.6	-1.6	-3.2	-2.2	0.3	0.4
<b>Base metals and articles of base metals. ...</b>	XV	5.454	180.6	177.7	-1.5	-0.9	-0.7	-0.7	-1.6
Iron and steel.....	72	1.244	217.3	212.6	-2.8	-0.6	-1.4	-1.1	-2.2
Articles of iron or steel.....	73	1.665	153.7	152.8	0.1	0.3	-0.5	-0.8	-0.6
Copper and articles thereof.....	74	0.479	312.3	301.5	-12.6	-2.2	-1.6	-1.0	-3.5
Aluminum and articles thereof.....	76	0.764	142.0	138.2	2.5	-1.7	1.1	-1.4	-2.7
Tools, implements, cutlery, spoons and forks, of base metal; parts thereof.....	82	0.429	129.1	128.8	-0.2	0.0	0.0	0.1	-0.2
Miscellaneous articles of base metal.....	83	0.498	138.1	137.9	1.4	-0.2	0.0	0.0	-0.1
<b>Machinery, electrical equipment, TV image and sound recorders, parts, etc.....</b>	XVI	28.834	83.7	83.4	-1.3	-0.1	-0.2	-0.2	-0.4
Machinery and mechanical appliances; parts thereof.....	84	14.655	89.0	88.6	-1.0	-0.1	-0.1	-0.1	-0.4
Electrical machinery and equip, sound and TV recorders & reproducers, parts.....	85	14.179	78.7	78.4	-1.8	-0.3	-0.4	-0.3	-0.4
<b>Vehicles, aircraft, vessels and associated transport equipment.....</b>	XVII	13.298	115.5	115.1	-0.8	0.2	0.0	-0.1	-0.3
Motor vehicles and their parts.....	87	12.021	114.2	113.8	-0.8	0.2	0.0	-0.1	-0.4
Aircraft, spacecraft, and parts thereof (Dec. 2002=100).....	88	1.187	120.2	120.2	-0.2	0.0	0.0	0.0	0.0
<b>Optical, photo, measuring, medical &amp; musical instruments; &amp; timepieces.....</b>	XVIII	3.743	104.0	103.4	-1.1	-0.5	0.0	0.0	-0.6
Optical, photographic, measuring and medical instruments.....	90	3.431	100.8	100.2	-1.2	-0.4	-0.2	0.1	-0.6
Clocks and watches and parts thereof.....	91	0.252	143.3	142.3	-1.2	-1.4	1.7	-0.1	-0.7
<b>Miscellaneous manufactured articles.....</b>	XX	3.899	114.1	113.8	0.6	0.0	0.1	0.1	-0.3
Furniture & stuffed furnishings; lamps & lighting fittings, nesoi; prefab bldgs.....	94	2.351	118.8	118.8	1.5	0.0	0.3	0.1	0.0
Toys, games and sports equipment; parts and accessories thereof.....	95	1.301	105.8	104.9	-0.5	-0.1	0.1	0.1	-0.9
Miscellaneous manufactured articles.....	96	0.248	134.7	135.3	-0.4	0.7	-0.7	-0.1	0.4

<sup>1</sup> Relative importance figures are based on 2013 trade values.

NOTES: Data may be revised in each of the three months after original publication.

Dash = Not available

**Table 6. U.S. export price indexes and percent changes for selected categories of goods: January 2014 to January 2015**

[2000=100, unless otherwise noted]

Description	Harmoni- zied system	Relative importance Dec. 2014 <sup>1</sup>	Index		Percent change				
			Dec. 2014	Jan. 2015	Annual	Monthly			
					Jan. 2014 to Jan. 2015	Sept. 2014 to Oct. 2014	Oct. 2014 to Nov. 2014	Nov. 2014 to Dec. 2014	Dec. 2014 to Jan. 2015
<b>Live animals; animal products.....</b>	I	2.124	229.9	220.3	-0.9	0.1	-2.3	-5.3	-4.2
Meat & edible meat offal (Dec. 2006=100)...	02	1.295	185.6	178.5	7.9	1.2	-1.3	-5.1	-3.8
Fish and crustaceans, molluscs and other aquatic invertebrates.....	03	0.382	203.8	207.3	4.3	-1.5	-1.5	-1.4	1.7
<b>Vegetable products.....</b>	II	4.165	225.6	223.1	-9.3	-3.4	2.0	1.3	-1.1
Edible fruit and nuts; peel of citrus fruit or melons.....	08	1.179	188.8	184.8	-1.6	10.0	-5.4	5.0	-2.1
Cereals.....	10	1.121	227.7	219.5	-7.6	-5.6	6.3	3.4	-3.6
Oilseeds and misc. grains, seeds, fruits, plants, straw and fodder.....	12	1.451	221.8	224.9	-15.6	-12.3	6.0	-2.8	1.4
<b>Animal or vegetable fats and oils (Dec. 2009=100).....</b>	III	0.214	104.6	104.9	-8.5	-1.7	-1.5	0.7	0.3
<b>Prepared foodstuffs, beverages, and tobacco.....</b>	IV	3.014	162.5	162.2	-2.3	-1.2	-0.1	0.7	-0.2
Preparations of vegetables, fruit, nuts or other parts of plants (Dec. 2009=100).....	20	0.368	117.5	118.5	3.0	0.0	-0.2	0.0	0.9
Beverages, spirits, and vinegar (Dec. 2008=100).....	22	0.474	110.8	110.2	-1.6	-0.7	2.0	-1.2	-0.5
Residues and waste from the food industries; prepared animal feed.....	23	0.746	243.5	244.7	-7.1	-4.0	-0.3	5.0	0.5
<b>Mineral products.....</b>	V	8.678	236.2	194.8	-38.6	-4.8	-5.6	-8.7	-17.5
Ores, slag and ash (Dec. 2012=100).....	26	0.509	93.4	89.8	-4.5	-2.4	-0.1	-2.1	-3.9
Mineral fuels, oils and residuals, bituminous substances and mineral waxes.....	27	7.987	229.7	186.5	-40.9	-5.0	-6.0	-9.4	-18.8
<b>Products of the chemical or allied industries.....</b>	VI	10.825	146.4	142.6	-5.2	-0.8	-0.8	-0.7	-2.6
Inorganic chemicals.....	28	0.819	173.5	173.0	-1.1	0.8	-0.4	1.1	-0.3
Organic chemicals.....	29	3.038	154.6	142.6	-12.7	-2.2	-1.7	-3.8	-7.8
Pharmaceutical products.....	30	2.582	114.5	112.9	-4.2	-0.9	-0.7	0.8	-1.4
Essential oils and resinoids; perfumery cosmetic or toilet preparations.....	33	0.750	133.0	136.4	0.5	0.0	-0.2	0.0	2.6
Soap; lubricants; waxes, polishing or scouring products; candles, pastes.....	34	0.479	116.8	116.8	-3.8	0.3	-1.0	-0.1	0.0
Miscellaneous chemical products.....	38	1.871	154.0	151.5	-3.7	0.2	-0.2	0.7	-1.6
<b>Plastics and articles thereof; rubber and articles thereof.....</b>	VII	5.231	148.6	146.8	-1.7	-0.1	-1.0	-0.5	-1.2
Plastics and articles thereof.....	39	4.271	144.1	142.2	-1.3	0.0	-0.8	-0.6	-1.3
Rubber and articles thereof.....	40	0.960	167.3	166.1	-3.6	-0.1	-1.7	-0.7	-0.7
<b>Raw hides, skins, leather, furskins, travel goods, etc.....</b>	VIII	0.446	153.0	149.8	-1.3	-0.9	-1.3	-3.0	-2.1
Raw hides and skins other than furskins and leather (Dec.2014=100).....	41	0.280	100.0	97.1	-	-	-	-	-2.9
<b>Wood, wood charcoal, cork, straw, baskets and wickerwork (Dec. 2014=100).....</b>	IX	0.617	100.0	101.0	-	-	-	-	1.0
<b>Woodpulp, recovered paper, and paper products.....</b>	X	2.223	126.0	124.8	1.1	0.4	-0.2	0.3	-1.0
Woodpulp and recovered paper.....	47	0.634	129.7	127.3	-0.2	-0.5	-0.2	0.5	-1.9
Paper and paperboard; articles of paper pulp, paper or paperboard.....	48	1.190	124.9	124.0	1.6	0.9	-0.2	0.2	-0.7
Printed material (Dec. 2014=100).....	49	0.399	100.0	100.3	-	-	-	-	0.3
<b>Textile and textile articles.....</b>	XI	1.769	124.6	123.6	-8.4	-1.2	-1.2	-1.0	-0.8

See footnotes at end of table.

**Table 6. U.S. export price indexes and percent changes for selected categories of goods: January 2014 to January 2015 — Continued**  
 [2000=100, unless otherwise noted]

Description	Harmonized system	Relative importance Dec. 2014 <sup>1</sup>	Index		Percent change				
			Dec. 2014	Jan. 2015	Annual Jan. 2014 to Jan. 2015	Monthly			
						Sept. 2014 to Oct. 2014	Oct. 2014 to Nov. 2014	Nov. 2014 to Dec. 2014	Dec. 2014 to Jan. 2015
Cotton, including yarns and woven fabrics thereof.....	52	0.453	121.4	119.6	-20.8	-2.5	-2.7	-2.6	-1.5
<b>Stone, plaster, cement, asbestos, ceramics, glass etc.....</b>	XIII	0.786	120.3	122.6	3.3	-0.1	0.1	0.2	1.9
Glass and glassware.....	70	0.411	98.9	99.7	2.0	-0.2	0.1	0.4	0.8
<b>Pearls, stones, precious metals, imitation jewelry, and coins.....</b>	XIV	4.684	236.7	236.2	-1.1	-2.6	-2.4	0.4	-0.2
<b>Base metals and articles of base metals. ...</b>	XV	5.296	159.9	158.0	-5.3	-0.6	-0.9	-0.7	-1.2
Iron and steel.....	72	1.296	178.9	178.8	-6.1	2.5	-3.2	-2.5	-0.1
Copper and articles thereof.....	74	0.533	201.8	194.2	-18.6	-8.4	0.2	-2.3	-3.8
Aluminum and articles thereof.....	76	0.918	124.7	120.7	0.1	-1.2	0.1	0.1	-3.2
Miscellaneous articles of base metal.....	83	0.322	147.1	147.7	0.6	0.0	0.0	0.0	0.4
<b>Machinery, electrical equipment, TV image and sound recorders, parts, etc.....</b>	XVI	28.220	97.2	97.3	0.3	0.0	-0.1	0.0	0.1
Machinery and mechanical appliances; parts thereof.....	84	16.903	113.1	113.4	1.4	0.4	0.0	-0.2	0.3
Electrical machinery and equipment and parts and accessories thereof.....	85	11.317	79.9	79.8	-1.4	-0.6	-0.1	0.1	-0.1
<b>Vehicles, aircraft, vessels and associated transport equipment.....</b>	XVII	14.099	130.2	130.4	1.0	0.1	0.0	0.1	0.2
Motor vehicles and their parts.....	87	8.819	115.2	115.1	0.3	0.2	-0.1	0.0	-0.1
<b>Optical, photo, measuring, medical &amp; musical instruments; &amp; timepieces.....</b>	XVIII	6.043	107.6	107.4	0.0	-0.2	-0.2	0.0	-0.2
<b>Miscellaneous manufactured articles.....</b>	XX	1.440	110.8	110.9	0.5	0.5	-0.4	0.1	0.1
Furniture; stuffed furnishings; lamps and lighting fittings nesoi;.....	94	0.816	122.5	122.7	1.0	1.0	-0.7	0.1	0.2
Toys, games and sports equipment; parts and accessories thereof.....	95	0.466	89.6	89.7	0.0	0.1	0.0	0.0	0.1

<sup>1</sup> Relative importance figures are based on 2013 trade values.

NOTES: Data may be revised in each of the three months after original publication.

Dash = Not available

**Table 7. U.S. import price indexes and percent changes by locality of origin: January 2014 to January 2015**  
[2000=100, unless otherwise noted]

Description	Relative importance Dec. 2014 <sup>1</sup>	Index		Percent change				
		Dec. 2014	Jan. 2015	Annual	Monthly			
				Jan. 2014 to Jan. 2015	Sept. 2014 to Oct. 2014	Oct. 2014 to Nov. 2014	Nov. 2014 to Dec. 2014	Dec. 2014 to Jan. 2015
<b>Industrialized Countries<sup>2</sup></b> .....	100.000	126.6	123.4	-5.8	-1.0	-1.2	-1.4	-2.5
Nonmanufactured articles.....	10.008	181.2	156.9	-30.8	-4.5	-7.5	-10.4	-13.4
Manufactured articles.....	89.476	121.9	120.4	-2.3	-0.4	-0.3	-0.3	-1.2
<b>Other Countries<sup>3</sup></b> .....	100.000	129.0	125.3	-8.9	-1.4	-2.1	-2.0	-2.9
Nonmanufactured articles.....	13.211	252.7	217.0	-35.7	-5.5	-9.0	-10.4	-14.1
Manufactured articles.....	86.577	108.1	106.9	-2.7	-0.5	-0.5	-0.3	-1.1
<b>Canada</b> .....	100.000	138.1	131.5	-12.3	-1.7	-3.0	-3.7	-4.8
Nonmanufactured articles.....	26.759	174.2	150.6	-31.3	-4.6	-7.5	-10.9	-13.5
Manufactured articles.....	72.448	132.5	130.5	-3.6	-0.4	-1.0	-0.7	-1.5
<b>European Union<sup>4</sup></b> .....	100.000	137.1	135.7	-1.3	-0.3	0.4	-0.4	-1.0
Manufactured articles.....	99.307	133.4	132.1	-1.3	-0.3	0.5	-0.4	-1.0
<b>France (Dec. 2003=100)</b> .....	100.000	122.8	123.2	0.3	0.2	-0.1	-0.3	0.3
<b>Germany (Dec. 2003=100)</b> .....	100.000	118.0	117.9	-0.5	0.5	-0.4	-0.4	-0.1
<b>United Kingdom (Dec. 2003=100)</b> .....	100.000	127.3	126.0	-2.7	-0.8	-2.8	0.1	-1.0
<b>Latin America<sup>5</sup></b> .....	100.000	155.9	150.1	-12.6	-1.7	-2.6	-3.3	-3.7
Nonmanufactured articles.....	20.665	264.3	229.2	-36.0	-4.6	-8.7	-11.5	-13.3
Manufactured articles.....	78.965	127.8	126.2	-3.7	-0.6	-0.3	-0.6	-1.3
<b>Mexico (Dec. 2003=100)</b> .....	100.000	134.9	132.1	-6.4	-1.1	-1.2	-1.7	-2.1
Nonmanufactured articles (Dec. 2008=100).....	11.690	146.7	126.0	-34.0	-4.0	-7.7	-11.0	-14.1
Manufactured articles (Dec. 2008=100)...	88.025	92.3	91.8	-1.3	-0.4	0.0	-0.1	-0.5
<b>Pacific Rim (Dec. 2003=100)<sup>6</sup></b> .....	100.000	101.8	101.3	-1.7	0.1	-0.2	-0.2	-0.5
<b>China (Dec. 2003=100)</b> .....	100.000	103.7	103.4	-0.3	0.0	0.0	0.0	-0.3
<b>Japan</b> .....	100.000	97.9	97.2	-1.9	0.0	-0.1	-0.5	-0.7
<b>Asian NICs<sup>7</sup></b> .....	100.000	88.3	88.1	-1.7	-0.1	-0.2	-0.3	-0.2
<b>ASEAN (Dec. 2003=100)<sup>8</sup></b> .....	100.000	101.7	100.6	-3.9	0.2	-0.5	0.0	-1.1
<b>Asia Near East (Dec. 2003=100)<sup>9</sup></b> .....	100.000	208.5	185.7	-27.6	-6.4	-6.7	-8.4	-10.9

<sup>1</sup> Relative importance figures are based on 2013 trade values.

<sup>2</sup> Western Europe, Canada, Japan, Australia, New Zealand and South Africa.

<sup>3</sup> Eastern Europe, Latin America, OPEC countries, and other countries in Asia, Africa and the Western Hemisphere.

<sup>4</sup> European Union countries.

<sup>5</sup> Mexico, Central America, South America and the Caribbean.

<sup>6</sup> China, Japan, Australia, Brunei, Indonesia, Macao, Malaysia, New Zealand, Papua New Guinea, Philippines and the Asian Newly Industrialized Countries.

<sup>7</sup> Asian Newly Industrialized Countries - Hong Kong, Singapore, South Korea and Taiwan.

<sup>8</sup> Association of Southeast Asian Nations - Brunei, Cambodia, Indonesia, Laos, Malaysia, Myanmar, Philippines, Singapore, Thailand and Vietnam.

<sup>9</sup> Bahrain, Iran, Iraq, Israel, Jordan, Kuwait, Lebanon, Oman, Qatar, Saudi Arabia, Syria, United Arab Emirates and Yemen.

NOTES: Data may be revised in each of the three months after original publication.

Regions are not mutually exclusive.

Dash = Not available

**Table 8. U.S. international price indexes and percent changes for selected transportation services: January 2014 to January 2015**

[2000=100, unless otherwise noted]

Description	Relative importance Dec. 2014 <sup>1</sup>	Index		Percent change				
		Dec. 2014	Jan. 2015	Annual	Monthly			
				Jan. 2014 to Jan. 2015	Sept. 2014 to Oct. 2014	Oct. 2014 to Nov. 2014	Nov. 2014 to Dec. 2014	Dec. 2014 to Jan. 2015
<b>Air Freight</b>								
<b>Import Air Freight</b> .....	100.000	167.1	167.3	-5.6	-1.4	-1.3	-1.7	0.1
Europe (Dec. 2003=100).....	27.659	166.6	162.0	-11.2	-1.9	-1.4	-2.3	-2.8
Asia.....	66.986	145.3	147.2	-3.5	-1.3	-1.4	-1.6	1.3
<b>Export Air Freight</b> .....	100.000	155.8	160.5	6.4	-0.4	-0.2	-1.7	3.0
Europe (Dec. 2006=100).....	34.802	141.1	147.4	8.9	0.0	-0.1	-1.3	4.5
<b>Inbound Air Freight</b> .....	100.000	158.7	160.4	-2.3	-0.9	-0.7	-1.9	1.1
Europe (Dec. 2003=100).....	27.132	150.2	148.3	-7.3	-1.3	-1.4	-2.0	-1.3
Asia.....	59.725	142.1	145.1	-0.5	-0.7	-0.7	-2.1	2.1
<b>Outbound Air Freight</b> .....	100.000	152.2	151.2	2.2	0.0	-0.2	-0.3	-0.7
Europe (Dec. 2003=100).....	33.074	172.1	170.6	2.9	0.1	0.0	0.0	-0.9
Asia.....	44.068	143.8	141.9	1.1	0.0	-0.2	-0.6	-1.3
<b>Air Passenger Fares</b>								
<b>Import Air Passenger Fares</b> .....	100.000	215.7	201.1	2.3	2.4	1.0	7.9	-6.8
Europe.....	43.188	228.3	235.4	8.6	2.3	2.8	0.8	3.1
Asia.....	26.295	172.3	147.5	-6.9	1.4	-0.9	16.2	-14.4
Latin America/Caribbean.....	10.095	186.2	165.3	-1.7	4.5	-1.6	10.6	-11.2
<b>Export Air Passenger Fares</b> .....	100.000	187.6	189.7	-3.8	-3.0	-5.0	7.8	1.1
Europe.....	28.829	228.4	211.9	0.8	-1.1	-6.4	5.4	-7.2
Asia.....	27.899	163.0	167.3	-8.2	-3.3	0.8	7.0	2.6
Latin America/Caribbean.....	23.440	197.9	195.9	-9.2	0.2	-1.9	9.5	-1.0

<sup>1</sup> Relative importance figures are based on 2013 trade values.

NOTES: Data may be revised in each of the three months after original publication.

Dash = Not available

## TECHNICAL NOTE

**Import and Export Merchandise and Services Price Indexes** -- All indexes use a modified Laspeyres formula and are not seasonally adjusted. Price indexes are reweighted annually, with a two-year lag in the weights. Published series use a base year of 2000=100 where possible. More detailed index series and additional information may be obtained at <http://www.bls.gov/mxp>, or by calling (202) 691-7101.

**Merchandise Goods Classification Systems** -- The merchandise price indexes are published using three classification systems. Items are classified by end use according to the Bureau of Economic Analysis Classification System, by industry according to the North American Industry Classification System (NAICS), and by product category according to the Harmonized System (HS). While classification by end use and product category are self-explanatory, some notes are in order for classifying items by industry. In the NAICS imports and exports tables, items are classified by output industry, not input industry. As an example, NAICS import index 326 (plastics and rubber products manufacturing) include outputs such as manufactured plastic rather than inputs such as petroleum. The NAICS classification structure also matches the classification system used by the PPI (Producer Price Index) to produce the NAICS primary products indexes.

**Import Price Indexes** -- Products have been classified by the Harmonized Tariff Schedule of the United States Annotated (TSUSA). Import prices are based on U.S. dollar prices paid by the U.S. importer. The prices are generally either "free on board" (f.o.b.) foreign port or "cost, insurance, and freight" (c.i.f.) U.S. port transaction prices, depending on the practices of the individual industry. The index for crude petroleum is calculated from data collected by the U.S. Department of Energy.

**Export Price Indexes** -- Products have been classified by the Harmonized Schedule B classification system of the U.S. Bureau of the Census. The prices used are generally either "free alongside ship" (f.a.s.) factory or "free on board" (f.o.b.) transaction prices, depending on the practices of the individual industry. Prices used in the grain index, excluding rice, are obtained from the U.S. Department of Agriculture.

**Services Price Indexes** -- Starting in September 2008 the Import Air Passenger Fares Indexes represent changes in the average revenue per passenger received by foreign carriers from U.S. residents and are calculated from data obtained from an airline consulting service. These data include tickets sold by travel agencies and travel websites. Tickets sold directly by the airlines are excluded, as are frequent flyer tickets generally. Starting in January 2008 the Export Air Passenger Fares Indexes represent changes in the average revenue per passenger received by U.S. carriers from foreign residents and are calculated from data collected directly from airlines. These data include frequent flyer tickets and those sold by consolidators. Taxes and fees are included in the Import Air Passenger Fares Index and excluded from the Export Air Passenger Fares Index. The Air Freight Indexes are calculated from data collected directly from airlines. These data exclude mail and passenger baggage. The scope of the service being priced is the movement of freight from airport to airport only, and does not include any ground transportation or port service. The Air Freight Indexes are presented using two definitions: Balance of Payments (which represent transactions between U.S. and foreign residents) and International (which represent transactions inbound to and outbound from the U.S.). Fact sheets specifying detailed information for each services industry are available at <http://www.bls.gov/mxp> under "MXP Publications."

**Import Indexes by Locality of Origin** -- Prices used in these indexes are a subset of the data collected for the Import Price Indexes. Beginning with January 2002, the indexes are defined by locality of origin using a nomenclature based upon the North American Industry Classification System (NAICS). Nonmanufactured goods are defined as NAICS 11 and 21 and manufactured goods are defined as NAICS 31-33.

**Revision Policy** -- To reflect the availability of late reports and corrections by respondents, monthly data may be revised in each of the three months after original publication. After three months, no further data revisions take place. So, for example, data released in the January release will be subject to revision in the releases for February, March, and April.

**Uses of the Data** -- The primary use of the indexes is to deflate trade statistics, notably the foreign trade sector of the National Income and Product Accounts constructed by the Department of Commerce. Other published indexes are useful for general market analysis. For trade in international services, Balance of Payments indexes are used for deflating National Income and Product Accounts, while International indexes are more appropriate for market analysis. Merchandise and services indexes also can be used to study U.S. competitiveness and to compute price elasticities, and the merchandise import indexes by country or region of origin are useful in terms of trade analysis.

**E-Mail Subscription** -- The U.S. Import and Export Price Indexes news release is available through an e-mail subscription service at (<http://www.bls.gov/bls/list.htm>).

**Additional Information** -- More detailed data are available on the Import/Export Price Indexes home page at (<http://www.bls.gov/mxp>). For technical assistance in using the BLS Internet site, send e-mail to ([labstat.helpdesk@bls.gov](mailto:labstat.helpdesk@bls.gov)). For Import/Export Price Index data requests, send e-mail to ([mxpinfo@bls.gov](mailto:mxpinfo@bls.gov)).

Information from this release will be made available to sensory impaired individuals upon request. Voice phone: 202-691-5200; Federal Relay Service: 1-800-877-8339.