

Transmission of material in this release is embargoed until
8:30 a.m. (EST) Wednesday, February 13, 2013

USDL-13-0235

Technical information: (202) 691-7101 • MXPinfo@bls.gov • www.bls.gov/mxp
Media contact: (202) 691-5902 • PressOffice@bls.gov

U.S. IMPORT AND EXPORT PRICE INDEXES – JANUARY 2013

The price index for U.S. imports increased 0.6 percent in January, the U.S. Bureau of Labor Statistics reported today, following declines of 0.5 percent and 0.7 percent the previous two months. The January upturn was primarily led by higher fuel prices. U.S. export prices rose 0.3 percent in January after declining 0.1 percent in December and 0.6 percent in November.

Chart 1. One-month percent change in the Import Price Index: January 2012 – January 2013

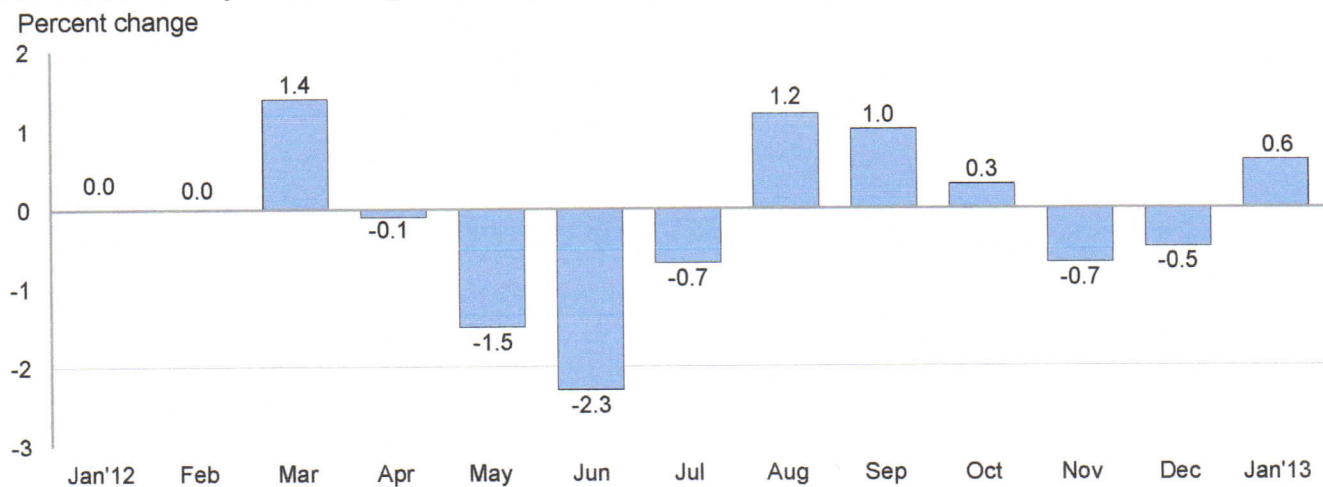
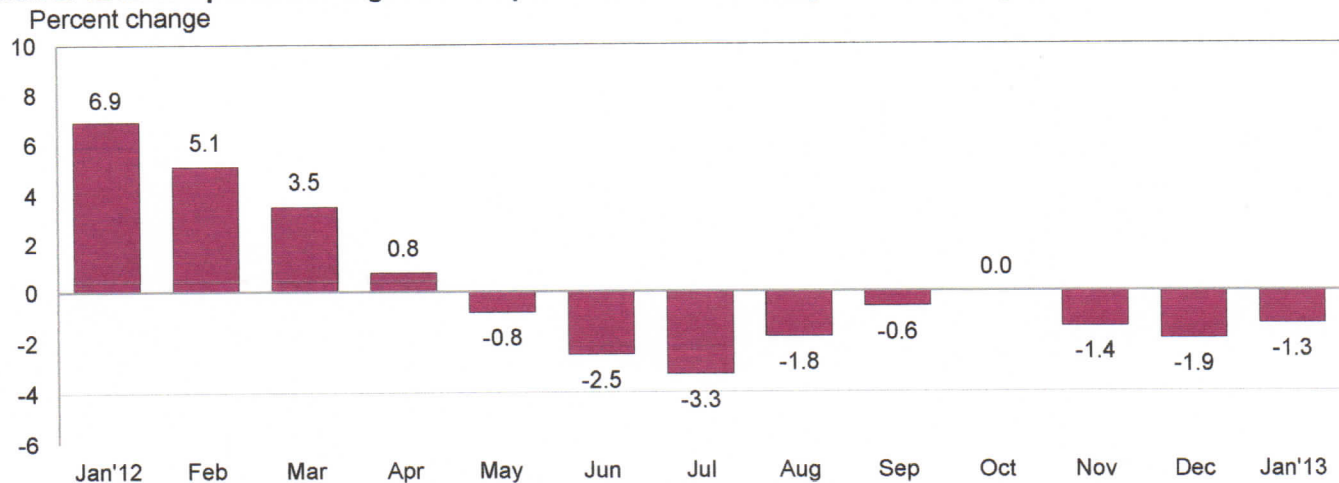


Chart 2. 12-month percent change in the Import Price Index: January 2012 – January 2013



All Imports: Import prices increased 0.6 percent in January, the first monthly advance since a 0.3 percent rise in October. Higher fuel prices were the largest contributor to the January advance, although nonfuel prices also increased. Despite the January rise, import prices declined 1.3 percent over the past year and have not risen on a 12-month basis since the index increased 0.8 percent between April 2011 and April 2012.

Fuel Imports: Prices for fuel imports rose 2.4 percent in January after falling 2.0 percent in December and 2.2 percent in November. The upturn was the largest monthly increase since a 3.9 percent advance in September. The January rise was led by a 2.9 percent increase in petroleum prices, which more than offset a 6.4 percent decline in natural gas prices. The price index for overall fuel imports decreased 5.2 percent for the year ended in January. A 5.9 percent drop in petroleum prices drove the 12-month decline in fuel prices. In contrast, natural gas prices increased 18.0 percent over the past year, despite the decline in January.

All Imports Excluding Fuel: Nonfuel import prices advanced 0.2 percent in January, following declines of 0.1 percent and 0.2 percent over the previous two months. Higher prices for nonfuel industrial supplies and materials; foods, feeds and beverages; consumer goods; and automotive vehicles all contributed to the January increase in nonfuel import prices. The price index for capital goods recorded no change. Prices for nonfuel imports were unchanged over the past year as rising prices for nonfuel industrial supplies and materials, automotive vehicles, and consumer goods offset decreasing prices for capital goods and foods, feeds, and beverages.

Table A. Percent changes

Month	IMPORTS			EXPORTS		
	All imports	Fuel imports	Nonfuel imports	All exports	Agricultural exports	Non-agricultural exports
2012						
January.....	0.0	-0.2	0.2	0.3	1.1	0.2
February.....	0.0	-0.1	0.0	0.5	-0.4	0.6
March.....	1.4	4.4	0.4	0.8	2.4	0.5
April.....	-0.1	-0.9	0.2	0.4	2.0	0.2
May.....	-1.5	-5.6	-0.1	-0.5	0.5	-0.6
June.....	-2.3	-8.5	-0.3	-1.7	-3.5	-1.5
July.....	-0.7	-2.0	-0.4	0.4	6.0	-0.2
August.....	1.2	6.1	-0.2	0.9	4.8	0.4
September.....	1.0	3.9	0.2	0.8	1.3	0.7
October.....	0.3 ^r	0.1	0.2 ^r	0.1 ^r	-1.7 ^r	0.3
November.....	-0.7 ^r	-2.2 ^r	-0.2	-0.6 ^r	0.5 ^r	-0.7 ^r
December.....	-0.5 ^r	-2.0 ^r	-0.1	-0.1	0.2 ^r	-0.2
2013						
January.....	0.6	2.4	0.2	0.3	-1.3	0.5
Jan. 2011 to 2012.....	6.9	19.8	2.9	2.6	-0.9	3.2
Jan. 2012 to 2013.....	-1.3	-5.2	0.0	1.1	10.7	0.0

r Revised

Chart 3. One-month percent change in the Export Price Index: January 2012 – January 2013

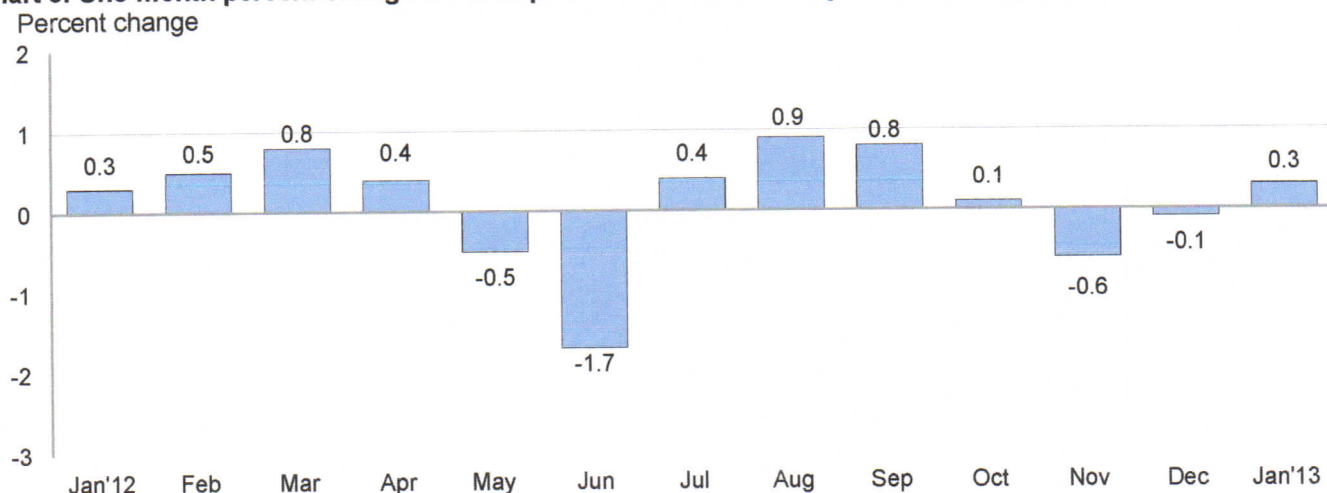
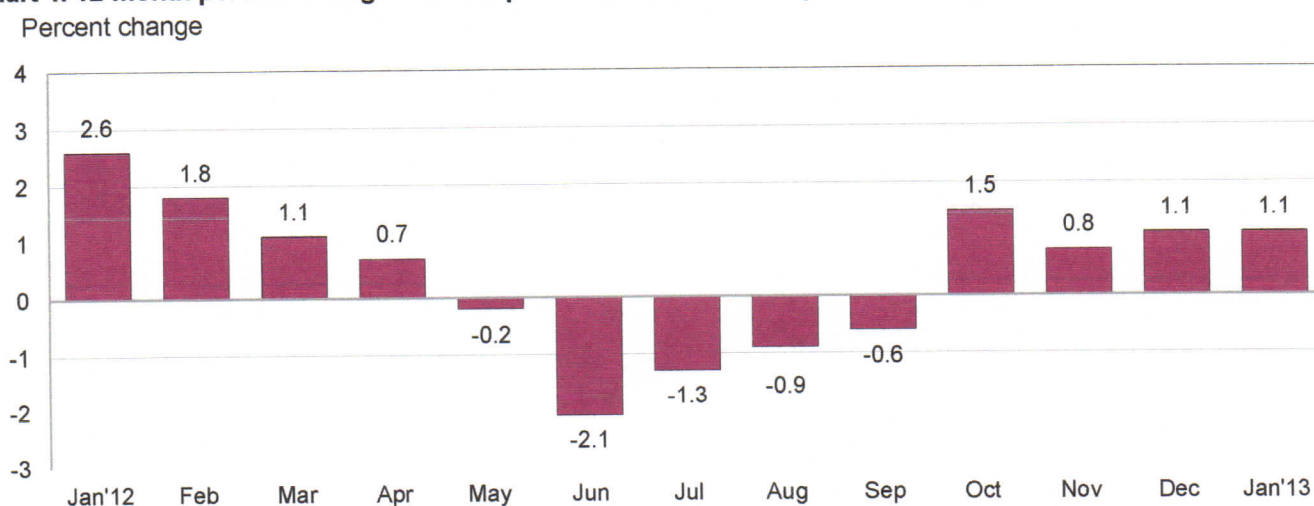


Chart 4. 12-month percent change in the Export Price Index: January 2012 – January 2013



All Exports: Export prices increased 0.3 percent in January, the first monthly advance since a 0.1 percent uptick in October. Higher nonagricultural prices more than offset declining agricultural prices. The price index for overall exports increased 1.1 percent for the year ended in January and was driven by a 10.7 percent advance in agricultural prices.

Agricultural Exports: The price index for agricultural exports decreased 1.3 percent in January following increases of 0.2 percent in December and 0.5 percent in November. The January downturn was led by lower prices for corn, wheat, and soybeans which fell 8.5 percent, 7.9 percent, and 3.5 percent, respectively. Despite the January drop, agricultural prices rose over the past 12 months, primarily driven by higher soybeans, wheat, and corn prices in the summer of 2012.

All Exports Excluding Agriculture: Prices for nonagricultural exports advanced 0.5 percent in January after decreasing in each of the past two months. Rising prices for capital goods, nonagricultural industrial supplies and materials, and automotive vehicles all contributed to the January increase. Prices for overall nonagricultural exports were unchanged over the past year. Increases of 1.0 percent in the price indexes for capital goods and automotive vehicles were offset by a 1.5 percent decline in nonagricultural industrial supplies and materials prices and a 0.1 percent drop in prices for consumer goods.

SELECTED JANUARY HIGHLIGHTS

Import Prices

Imports by Locality of Origin: Prices for imports from China edged down 0.1 percent in January after recording no change the previous month. Import prices from China have not recorded a monthly increase since February 2012, after rising 3.6 percent in 2011. The price index for imports from Japan also declined in January, falling 0.2 percent, the largest one-month decrease since September 2008. In contrast, import prices from the European Union rose 1.1 percent, the largest monthly increase since a 1.2 percent advance in March 2011. Prices for imports from Canada and Mexico also increased in January, rising 0.9 percent and 0.6 percent, respectively.

Nonfuel Industrial Supplies and Materials: Nonfuel industrial supplies and materials prices advanced 0.4 percent in January following a 0.3 percent rise in December. The January increase was led by a 2.9 percent advance in the price index for building materials which increased 12.5 percent over the past 12 months. Higher lumber prices were the primary contributor to both the increase in January and over the past year.

Finished Goods: The price indexes for automotive vehicles and consumer goods each edged up 0.1 percent in January, and capital goods prices were unchanged. The increase in automotive vehicle prices was led by a 0.5 percent advance in passenger car prices, which more than offset lower parts prices. Consumer goods prices were primarily impacted by prices for medicinal, dental, and pharmaceutical products which rose 1.4 percent and cotton apparel prices which fell 0.8 percent.

Foods, Feeds, and Beverages: Prices for foods, feeds, and beverages rose 0.5 percent in January, the first monthly advance for the index since a 1.4 percent rise in September. Despite the January upturn, foods, feeds, and beverages prices declined 3.6 percent over the past year.

Transportation Services: Import air passenger fares declined 3.7 percent in January following a 6.8 percent increase in December. The January decrease was primarily led by a 7.7 percent drop in Asian fares. Despite the January downturn, overall import air passenger fares advanced 3.9 percent over the past year. Prices for import air freight increased 0.2 percent in January and 2.9 percent over the past 12 months.

Export Prices

Nonagricultural Industrial Supplies and Materials: Nonagricultural industrial supplies and materials prices rose 0.3 percent in January after decreasing 0.4 percent the previous month. The increase in January was mostly driven by a 0.9 percent rise in fuels, a 3.4 percent advance in paper prices, and a 0.6 percent rise in chemicals prices. In contrast, nonferrous metals prices fell 1.2 percent.

Finished Goods: Finished goods prices increased overall in January. The price index for capital goods rose 0.8 percent, the largest one-month advance for the index since a similar 0.8 percent rise in January 2012. Prices for automotive vehicles increased 0.3 percent in January, led by higher parts prices and prices for transportation vehicles. Consumer goods prices recorded no change in January.

Transportation Services: Export air passenger fares advanced 9.3 percent in January and 8.4 percent over the past 12 months. The January increase was driven by higher Asian and Latin American/Caribbean fares. The price index for export air freight rose 1.6 percent in January and 2.0 percent over the past year.

Import and Export Price Index data for February 2013 are scheduled for release on Wednesday, March 13, 2013 at 8:30 a.m. (EDT).

Table 1. U.S. import price indexes and percent changes for selected categories of goods: January 2012 to January 2013

[2000=100, unless otherwise noted]

Description	End Use	Relative importance Dec. 2012 ¹	Index		Percent change				
			Dec. 2012	Jan. 2013	Annual Jan. 2012 to Jan. 2013	Monthly			
						Sept. 2012 to Oct. 2012	Oct. 2012 to Nov. 2012	Nov. 2012 to Dec. 2012	Dec. 2012 to Jan. 2013
All commodities.....		100.000	139.5	140.4	-1.3	0.3	-0.7	-0.5	0.6
All imports excluding food and fuels (Dec. 2010=100).....		74.335	103.4	103.6	0.3	0.3	-0.2	0.0	0.2
All imports excluding petroleum.....		80.304	116.5	116.6	0.2	0.3	-0.1	0.2	0.1
All imports excluding fuels (Dec. 2001=100).....		79.273	120.4	120.6	0.0	0.2	-0.2	-0.1	0.2
Foods, feeds, & beverages.....	0	4.938	169.1	170.0	-3.6	0.0	-1.2	-0.3	0.5
Agricultural foods, feeds & beverages, excluding distilled beverages.....	00	3.852	190.6	191.6	-3.6	-0.1	-1.7	-0.2	0.5
Nonagricultural foods (fish, distilled beverages).....	01	1.086	120.4	121.3	-3.3	0.2	0.8	-0.8	0.7
Industrial supplies & materials.....	1	34.350	249.8	253.8	-3.3	0.4	-1.6	-1.2	1.6
Industrial supplies & materials excluding petroleum.....		14.654	168.0	167.9	1.3	1.2	0.6	1.1	-0.1
Industrial supplies & materials excluding fuels (Dec. 2001=100).....		13.623	188.7	189.4	0.6	1.1	-0.5	0.3	0.4
Industrial supplies & materials, durable.....		8.091	177.5	178.4	0.2	2.3	-0.5	-0.3	0.5
Industrial supplies & materials nondurable excluding petroleum.....		5.532	156.4	155.1	2.6	0.0	1.9	2.9	-0.8
Fuels & lubricants.....	10	20.727	329.0	337.0	-5.2	0.1	-2.2	-2.0	2.4
Petroleum & petroleum products.....	100	19.695	363.9	374.4	-5.9	-0.1	-2.9	-2.7	2.9
Crude.....	10000	14.924	373.3	384.5	-5.5	-0.3	-2.7	-2.8	3.0
Fuels, n.e.s.-coals & gas.....	101	0.804	133.4	126.1	16.1	6.0	19.5	14.8	-5.5
Gas-natural.....	10110	0.672	119.5	111.9	18.0	7.7	23.4	16.7	-6.4
Paper & paper base stocks.....	11	0.554	111.5	111.9	-0.5	-0.3	-0.1	-0.6	0.4
Materials associated with nondurable supplies & materials.....	12	5.057	176.2	176.5	1.0	-0.6	-0.5	1.2	0.2
Selected building materials.....	13	1.017	143.6	147.7	12.5	0.2	-0.1	1.5	2.9
Unfinished metals related to durable goods.....	14	3.839	264.0	264.1	-2.5	4.4	-0.9	-0.7	0.0
Finished metals related to durable goods. ..	15	1.616	161.7	162.2	0.3	1.4	-0.5	-0.8	0.3
Nonmetals related to durable goods.....	16	1.540	114.4	114.5	-0.2	0.0	0.2	0.0	0.1
Capital goods.....	2	24.150	93.1	93.1	-0.4	-0.1	-0.1	-0.1	0.0
Electric generating equipment.....	20	3.009	119.7	119.7	0.7	0.1	-0.1	0.2	0.0
Nonelectrical machinery.....	21	19.289	85.9	86.0	-0.8	-0.2	-0.1	-0.2	0.1
Transportation equipment excluding motor vehicles (Dec. 2001=100).....	22	1.852	134.8	135.1	2.7	0.1	0.2	0.4	0.2
Automotive vehicles, parts & engines.....	3	12.282	114.9	115.0	1.5	0.2	0.0	-0.1	0.1
Consumer goods, excluding automotives..	4	24.280	107.6	107.7	0.2	0.5	-0.1	-0.1	0.1
Nondurables, manufactured.....	40	11.756	115.3	115.7	1.0	0.5	0.1	-0.1	0.3
Durables, manufactured.....	41	11.214	99.7	99.7	-0.3	0.4	-0.2	-0.1	0.0
Nonmanufactured consumer goods.....	42	1.310	115.3	115.3	-2.8	0.1	0.1	-0.3	0.0

¹ Relative importance figures are based on 2011 trade values.

NOTES: Data may be revised in each of the three months after original publication.

Dash = Not available

Table 2. U.S. export price indexes and percent changes for selected categories of goods: January 2012 to January 2013

[2000=100, unless otherwise noted]

Description	End Use	Relative importance Dec. 2012 ¹	Index		Percent change				
			Dec. 2012	Jan. 2013	Annual Jan. 2012 to Jan. 2013	Monthly			
						Sept. 2012 to Oct. 2012	Oct. 2012 to Nov. 2012	Nov. 2012 to Dec. 2012	Dec. 2012 to Jan. 2013
All commodities.....		100.000	133.6	134.0	1.1	0.1	-0.6	-0.1	0.3
Agricultural commodities.....		10.703	227.5	224.5	10.7	-1.7	0.5	0.2	-1.3
All exports excluding food and fuels (Dec. 2010=100).....		80.855	102.7	103.1	0.6	0.3	-0.2	0.0	0.4
Nonagricultural commodities.....		89.298	126.9	127.5	0.0	0.3	-0.7	-0.2	0.5
Foods, feeds, & beverages.....	0	10.016	229.3	225.9	12.1	-1.5	0.6	-0.1	-1.5
Agricultural foods, feeds & beverages, excluding distilled beverages.....	00	9.338	233.9	229.8	12.8	-1.6	0.8	0.0	-1.8
Nonagricultural foods (fish, distilled beverages).....	01	0.678	187.5	192.4	3.5	1.0	-2.1	-1.7	2.6
Industrial supplies & materials.....	1	34.117	180.6	181.3	-1.4	0.5	-1.9	-0.3	0.4
Industrial supplies & materials, durable.....		12.451	186.1	184.8	-0.1	2.0	-0.8	0.3	-0.7
Industrial supplies & materials, nondurable.....		21.667	178.3	180.2	-2.1	-0.2	-2.5	-0.7	1.1
Agricultural industrial supplies & materials...	10	1.365	196.4	200.2	-0.2	-1.9	-1.6	1.2	1.9
Nonagricultural industrial supplies & materials.....		32.753	180.2	180.8	-1.5	0.7	-1.8	-0.4	0.3
Fuels & lubricants.....	11	9.130	253.6	256.0	-6.5	-0.4	-5.5	-1.2	0.9
Nonagricultural supplies & materials excluding fuels & building materials.....	12	22.636	172.4	172.6	0.3	1.1	-0.6	-0.1	0.1
Selected building materials.....	13	0.987	117.9	118.8	2.6	-0.8	0.0	0.0	0.8
Capital goods.....	2	34.981	105.7	106.5	1.0	0.0	0.1	0.0	0.8
Electrical generating equipment.....	20	3.461	114.2	114.8	2.2	0.4	-0.1	-0.1	0.5
Nonelectrical machinery.....	21	25.473	94.9	95.6	0.4	0.0	0.1	0.0	0.7
Transportation equipment excluding motor vehicles (Dec. 2001=100).....	22	6.047	149.0	150.1	2.2	-0.1	-0.1	0.1	0.7
Automotive vehicles, parts & engines.....	3	8.867	112.9	113.2	1.0	0.0	0.0	0.0	0.3
Consumer goods, excluding automotives..	4	12.019	116.6	116.6	-0.1	0.2	-0.2	-0.1	0.0
Nondurables, manufactured.....	40	5.479	115.6	115.8	1.0	0.4	0.0	-0.2	0.2
Durables, manufactured.....	41	5.174	114.3	114.0	0.5	-0.3	-0.3	0.0	-0.3

¹ Relative importance figures are based on 2011 trade values.

NOTES: Data may be revised in each of the three months after original publication.

Dash = Not available

Table 3. U.S. import price indexes and percent changes for selected categories of goods: January 2012 to January 2013

[December 2005=100, unless otherwise noted]

Description	NAICS	Relative importance Dec. 2012 ¹	Index		Percent change				
			Dec. 2012	Jan. 2013	Annual Jan. 2012 to Jan. 2013	Monthly			
						Sept. 2012 to Oct. 2012	Oct. 2012 to Nov. 2012	Nov. 2012 to Dec. 2012	Dec. 2012 to Jan. 2013
Nonmanufactured articles.....		17.967	161.7	165.3	-4.7	0.1	-1.8	-1.9	2.2
Agriculture, forestry, fishing and hunting...	11	1.749	165.3	166.7	-5.9	1.2	-4.9	-0.4	0.8
Crop production.....	111	1.232	170.8	170.6	-8.6	0.9	-6.5	-0.2	-0.1
Forestry and logging (Dec. 2012=100).....	113	0.194	100.0	105.9	-	-	-	-	5.9
Mining.....	21	16.218	160.9	164.9	-4.6	0.1	-1.4	-2.2	2.5
Mining (except oil and gas) (Dec. 2006=100).....	212	0.337	139.4	135.2	-8.0	-3.0	-0.9	0.3	-3.0
Manufactured articles.....		81.579	117.4	117.7	-0.3	0.3	-0.4	-0.2	0.3
Manufactured goods, part 1.....	31	10.532	123.7	123.6	-1.0	-0.3	0.1	0.2	-0.1
Food manufacturing.....	311	2.873	154.8	155.2	-2.9	-1.0	0.0	0.8	0.3
Beverage and tobacco product manufacturing.....	312	0.865	112.0	113.2	1.0	0.1	0.4	-0.3	1.1
Textile mills (Dec. 2011=100).....	313	0.392	102.3	101.9	0.7	0.1	-0.1	-0.1	-0.4
Textile product mills.....	314	0.792	115.9	115.6	-1.9	0.1	0.1	0.1	-0.3
Apparel manufacturing.....	315	3.959	111.0	110.4	-1.3	-0.2	0.1	0.0	-0.5
Leather and allied product manufacturing. ...	316	1.652	120.8	121.0	2.1	0.1	0.0	0.0	0.2
Manufactured goods, part 2.....	32	17.963	137.8	139.1	-0.9	0.2	-1.3	-0.4	0.9
Wood product manufacturing.....	321	0.608	123.4	128.6	19.0	0.1	0.4	2.5	4.2
Paper manufacturing.....	322	1.031	110.1	109.0	-1.2	-0.1	0.2	-0.5	-1.0
Petroleum and coal products manufacturing.....	324	4.261	163.9	168.2	-7.8	0.3	-4.9	-1.9	2.6
Chemical manufacturing.....	325	9.178	135.1	135.8	1.7	0.4	0.0	0.1	0.5
Plastics and rubber products manufacturing.....	326	1.966	127.6	126.7	-0.4	0.1	-0.1	0.1	-0.7
Nonmetallic mineral product manufacturing.....	327	0.835	129.1	129.5	0.4	-0.5	-0.2	-0.2	0.3
Manufactured goods, part 3.....	33	53.084	109.8	109.9	0.0	0.5	-0.3	-0.1	0.1
Primary metal manufacturing.....	331	4.477	173.0	173.4	-2.3	4.2	-1.1	-1.0	0.2
Fabricated metal product manufacturing. ...	332	2.699	130.1	129.9	0.5	0.4	-0.2	-0.2	-0.2
Machinery manufacturing.....	333	6.638	121.8	122.3	1.7	0.2	-0.1	0.0	0.4
Computer and electronic product manufacturing.....	334	16.169	81.7	81.6	-1.8	-0.2	-0.5	-0.1	-0.1
Electrical equipment, appliance, and component manufacturing.....	335	4.028	119.8	119.7	1.6	0.3	0.4	0.3	-0.1
Transportation equipment manufacturing....	336	12.988	112.3	112.6	2.0	0.4	0.0	0.0	0.3
Furniture and related product manufacturing.....	337	1.249	113.8	114.0	0.9	-0.3	0.0	0.0	0.2
Miscellaneous manufacturing.....	339	4.835	120.7	120.6	-1.1	0.2	0.1	-0.5	-0.1

¹ Relative importance figures are based on 2011 trade values.

NOTES: Data may be revised in each of the three months after original publication.

Dash = Not available

Table 4. U.S. export price indexes and percent changes for selected categories of goods: January 2012 to January 2013

[December 2005=100, unless otherwise noted]

Description	NAICS	Relative importance Dec. 2012 ¹	Index		Percent change				
			Dec. 2012	Jan. 2013	Annual Jan. 2012 to Jan. 2013	Monthly			
						Sept. 2012 to Oct. 2012	Oct. 2012 to Nov. 2012	Nov. 2012 to Dec. 2012	Dec. 2012 to Jan. 2013
Nonmanufactured articles.....		8.055	175.5	172.4	3.6	-2.9	0.1	-0.2	-1.8
Agriculture, forestry, fishing and hunting...	11	5.920	217.0	212.5	11.5	-3.5	-0.1	-0.3	-2.1
Crop production.....	111	5.486	226.4	221.6	12.0	-3.8	0.2	-0.2	-2.1
Mining.....	21	2.135	94.5	93.6	-17.9	-1.0	1.0	0.3	-1.0
Mining (except oil and gas).....	212	1.460	109.0	108.0	-21.8	-4.9	-3.8	1.5	-0.9
Manufactured articles.....		89.381	120.7	121.2	0.7	0.3	-0.7	-0.2	0.4
Manufactured goods, part 1.....	31	7.038	152.3	152.6	6.9	1.0	0.4	0.0	0.2
Food manufacturing.....	311	4.963	175.2	175.3	7.7	1.5	0.5	-0.1	0.1
Beverage and tobacco product manufacturing.....	312	0.564	126.3	127.8	11.9	-0.5	-1.4	0.3	1.2
Manufactured goods, part 2.....	32	26.133	132.1	133.1	-0.2	0.1	-2.1	-0.6	0.8
Wood product manufacturing.....	321	0.404	113.3	113.6	-0.5	-0.7	0.4	-0.4	0.3
Paper manufacturing.....	322	1.773	118.9	120.3	1.3	-0.1	-0.5	-0.1	1.2
Petroleum and coal products manufacturing.....	324	6.837	161.8	163.8	-2.3	-0.1	-7.6	-1.3	1.2
Chemical manufacturing.....	325	14.134	130.4	131.0	-0.1	0.2	-0.5	-0.5	0.5
Plastics and rubber products manufacturing.....	326	2.206	119.4	120.1	2.9	0.0	0.1	0.5	0.6
Nonmetallic mineral product manufacturing.....	327	0.779	110.8	110.2	-0.8	-0.3	-0.2	-0.4	-0.5
Manufactured goods, part 3.....	33	56.210	113.2	113.6	0.5	0.4	-0.1	-0.1	0.4
Primary metal manufacturing.....	331	5.299	172.6	170.2	-1.6	4.0	-1.1	-0.5	-1.4
Fabricated metal product manufacturing.....	332	2.753	131.8	131.7	1.7	0.3	0.0	-0.2	-0.1
Machinery manufacturing.....	333	11.499	121.1	121.9	1.8	0.0	0.1	0.1	0.7
Computer and electronic product manufacturing.....	334	14.168	88.9	89.3	-1.4	0.1	0.0	-0.2	0.4
Electrical equipment, appliance, and component manufacturing.....	335	3.271	113.0	113.7	2.4	0.2	0.0	0.2	0.6
Transportation equipment manufacturing.....	336	13.972	116.8	117.2	1.4	0.0	0.0	0.0	0.3
Furniture and related product manufacturing (Dec. 2011=100).....	337	0.312	104.8	105.1	5.1	1.4	0.2	0.1	0.3
Miscellaneous manufacturing.....	339	4.936	121.9	123.3	0.7	-0.2	0.0	-0.2	1.1

¹ Relative importance figures are based on 2011 trade values.

NOTES: Data may be revised in each of the three months after original publication.

Dash = Not available

Table 5. U.S. import price indexes and percent changes for selected categories of goods: January 2012 to January 2013

[2000=100, unless otherwise noted]

Description	Harmonized system	Relative importance Dec. 2012 ¹	Index		Percent change				
			Dec. 2012	Jan. 2013	Annual Jan. 2012 to Jan. 2013	Monthly			
						Sept. 2012 to Oct. 2012	Oct. 2012 to Nov. 2012	Nov. 2012 to Dec. 2012	Dec. 2012 to Jan. 2013
Live animals; animal products.....	I	1.050	163.1	165.0	-2.8	0.2	1.5	-0.7	1.2
Meat and edible meat offal.....	02	0.250	217.2	220.4	-0.2	-0.7	0.4	-0.6	1.5
Fish and crustaceans, molluscs and other aquatic invertebrates.....	03	0.546	113.1	115.2	-7.2	0.2	1.6	-1.3	1.9
Vegetable products.....	II	1.605	205.8	207.7	-4.8	-1.5	-4.3	1.9	0.9
Edible vegetables, roots, and tubers.....	07	0.360	349.8	357.6	-2.3	-3.7	-2.6	-0.2	2.2
Edible fruit and nuts; peel of citrus fruit or melons.....	08	0.403	108.7	111.0	-5.0	-2.3	-3.0	-0.7	2.1
Coffee, tea, mate and spices.....	09	0.359	232.1	233.1	-22.0	4.0	-11.4	-0.3	0.4
Animal or vegetable fats and oils (Dec. 2009=100).....	III	0.254	118.4	120.4	-11.3	-2.5	-2.0	-2.5	1.7
Prepared foodstuffs, beverages, and tobacco.....	IV	2.407	157.6	157.6	-0.3	0.1	0.0	-0.1	0.0
Sugars and sugar confectionary (Dec. 2012=100).....	17	0.211	100.0	100.9	-	-	-	-	0.9
Cocoa and cocoa preparations (Dec. 2009=100).....	18	0.206	91.7	91.0	6.6	2.8	1.6	3.9	-0.8
Preparations of cereals, flour, starch or milk; bakers' wares (Dec. 2007=100).....	19	0.236	129.0	129.3	2.8	0.2	0.0	-0.1	0.2
Preparations of vegetables, fruit, nuts, or other parts of plants.....	20	0.320	166.9	163.0	-7.8	-0.8	0.4	-1.2	-2.3
Beverages, spirits, and vinegar.....	22	0.852	122.4	124.0	1.0	0.2	0.3	-0.2	1.3
Mineral products.....	V	20.640	331.0	339.3	-5.0	0.1	-2.4	-1.9	2.5
Mineral fuels, oils and residuals, bituminous substances and mineral waxes.....	27	20.342	327.5	336.0	-4.9	0.1	-2.4	-1.9	2.6
Products of the chemical or allied industries.....	VI	8.671	151.1	151.9	2.4	0.5	0.2	-0.3	0.5
Inorganic chemicals.....	28	0.871	386.1	380.0	3.5	-1.0	-0.1	-1.6	-1.6
Organic chemicals.....	29	2.696	139.8	141.4	2.8	0.2	1.0	-0.2	1.1
Pharmaceutical products.....	30	3.261	119.8	121.0	4.6	2.2	0.1	0.1	1.0
Fertilizers (Dec. 2009=100).....	31	0.414	130.6	128.7	-7.7	-1.5	-2.0	-0.5	-1.5
Tanning extracts; dye, pigments, varnish, paints & putty (Dec. 2011=100).....	32	0.163	93.1	93.8	-9.0	-10.0	0.0	-0.1	0.8
Miscellaneous chemical products.....	38	0.487	102.7	102.1	-1.3	-0.5	0.6	0.8	-0.6
Plastics and articles thereof; rubber and articles thereof.....	VII	3.217	152.5	153.1	0.8	0.3	-0.5	0.7	0.4
Plastics and articles thereof.....	39	1.943	146.2	147.5	3.0	0.4	-0.2	1.5	0.9
Rubber and articles thereof.....	40	1.274	164.8	164.3	-2.6	0.1	-0.9	-0.5	-0.3
Raw hides, skins, leather, furskins, travel goods, etc.....	VIII	0.599	126.1	126.3	0.6	0.0	0.0	-0.1	0.2
Articles of leather; travel goods, bags, etc. of various materials.....	42	0.552	126.8	127.1	0.6	-0.1	0.0	-0.1	0.2
Wood, wood charcoal, cork, straw, basketware and wickerwork.....	IX	0.642	149.5	156.1	19.4	0.4	0.1	2.3	4.4
Woodpulp, recovered paper, and paper products.....	X	1.128	113.1	112.1	-0.7	-0.1	0.0	-0.3	-0.9
Pulp wood, waste paper, and paperboard (Dec. 2011=100).....	47	0.169	97.5	98.4	2.9	-1.2	-0.8	-0.3	0.9
Paper and paperboard; articles of paper pulp, paper or paperboard.....	48	0.759	108.1	106.5	-2.3	0.2	0.2	-0.5	-1.5
Textile and textile articles.....	XI	4.985	114.6	114.0	-1.6	-0.1	0.2	-0.1	-0.5
Articles of apparel and clothing accessories, knitted or crocheted.....	61	1.968	104.8	104.0	-2.6	-0.4	0.2	0.0	-0.8

See footnotes at end of table.

Table 5. U.S. import price indexes and percent changes for selected categories of goods: January 2012 to January 2013 — Continued
 [2000=100, unless otherwise noted]

Description	Harmoni- zied system	Relative importance Dec. 2012 ¹	Index		Percent change				
			Dec. 2012	Jan. 2013	Annual Jan. 2012 to Jan. 2013	Monthly			
						Sept. 2012 to Oct. 2012	Oct. 2012 to Nov. 2012	Nov. 2012 to Dec. 2012	Dec. 2012 to Jan. 2013
Articles of apparel and clothing accessories, not knitted or crocheted.....	62	1.825	117.3	116.7	-0.7	0.0	0.1	-0.2	-0.5
Made-up or worn textile articles.....	63	0.552	108.6	108.1	-3.5	0.0	0.2	-0.1	-0.5
Headgear, umbrellas, artificial flowers, etc. . .	XII	1.357	120.5	120.7	2.3	0.2	0.0	0.2	0.2
Footwear and parts of such articles.....	64	1.144	119.8	119.8	2.5	0.1	0.0	0.1	0.0
Stone, plaster, cement, asbestos, ceramics, glass etc.....	XIII	0.764	131.4	132.3	0.8	-0.2	-0.2	-0.3	0.7
Articles of stone, plaster, cement, asbestos, or mica (Dec. 2001=100).....	68	0.246	124.5	124.8	0.6	-1.0	0.4	-0.6	0.2
Ceramic products.....	69	0.241	141.0	140.6	-0.4	0.1	-1.0	0.1	-0.3
Glass and glassware.....	70	0.277	126.9	129.3	2.2	0.0	0.1	-0.2	1.9
Pearls, stones, precious metals, imitation jewelry, and coins.....	XIV	3.402	205.8	204.2	0.6	4.5	-0.7	-0.6	-0.8
Base metals and articles of base metals.....	XV	5.025	183.3	185.0	-2.4	0.7	-0.5	-0.5	0.9
Iron and steel.....	72	1.143	218.5	216.7	-12.2	-2.7	0.2	-1.2	-0.8
Articles of iron or steel.....	73	1.494	157.0	156.9	-2.9	-0.4	-0.4	-0.6	-0.1
Copper and articles thereof.....	74	0.487	355.0	364.6	4.5	5.0	-3.2	0.3	2.7
Nickel and articles thereof (Dec. 2009=100)...	75	0.142	97.2	102.4	-2.4	6.9	2.5	-6.6	5.3
Aluminum and articles thereof.....	76	0.670	137.5	140.2	1.4	4.1	-1.0	0.5	2.0
Tools, implements, cutlery, spoons and forks, of base metal; parts thereof.....	82	0.380	128.0	131.5	3.7	-0.5	0.2	-0.1	2.7
Miscellaneous articles of base metal.....	83	0.430	136.3	136.6	3.3	-0.4	-0.1	0.1	0.2
Machinery, electrical equipment, TV image and sound recorders, parts, etc.....	XVI	26.653	85.7	85.7	-0.6	0.0	-0.2	0.0	0.0
Machinery and mechanical appliances; parts thereof.....	84	13.734	90.0	90.0	0.3	0.0	-0.2	0.0	0.0
Electrical machinery and equip, sound and TV recorders & reproducers, parts.....	85	12.919	81.6	81.5	-1.6	-0.1	-0.2	0.0	-0.1
Vehicles, aircraft, vessels and associated transport equipment.....	XVII	10.739	116.5	116.7	1.8	0.3	0.0	0.0	0.2
Motor vehicles and their parts.....	87	9.807	115.3	115.6	1.7	0.3	-0.1	-0.2	0.3
Aircraft, spacecraft, and parts thereof (Dec. 2002=100).....	88	0.865	119.3	119.4	2.8	0.0	0.3	0.7	0.1
Optical, photo, measuring, medical & musical instruments; & timepieces.....	XVIII	3.348	104.0	103.6	-0.3	0.7	0.0	-0.8	-0.4
Optical, photographic, measuring and medical instruments.....	90	3.037	100.8	100.4	-1.0	0.2	0.0	-0.9	-0.4
Clocks and watches and parts thereof.....	91	0.252	140.8	141.7	10.9	6.4	0.1	-0.1	0.6
Miscellaneous manufactured articles.....	XX	3.457	112.8	113.2	1.4	0.2	0.1	0.1	0.4
Furniture & stuffed furnishings; lamps & lighting fittings, nesoi; prefab bldgs.....	94	1.932	116.7	117.0	1.7	0.1	0.0	0.1	0.3
Toys, games and sports equipment; parts and accessories thereof.....	95	1.334	105.1	105.3	0.5	0.4	0.1	0.0	0.2
Miscellaneous manufactured articles.....	96	0.190	135.5	141.4	6.6	0.1	0.0	-0.3	4.4

¹ Relative importance figures are based on 2011 trade values.

NOTES: Data may be revised in each of the three months after original publication.

Dash = Not available

Table 6. U.S. export price indexes and percent changes for selected categories of goods: January 2012 to January 2013

[2000=100, unless otherwise noted]

Description	Harmonized system	Relative importance Dec. 2012 ¹	Index		Percent change				
			Dec. 2012	Jan. 2013	Annual Jan. 2012 to Jan. 2013	Monthly			
						Sept. 2012 to Oct. 2012	Oct. 2012 to Nov. 2012	Nov. 2012 to Dec. 2012	Dec. 2012 to Jan. 2013
Live animals; animal products.....	I	2.123	224.7	219.1	6.4	4.2	1.9	2.1	-2.5
Meat & edible meat offal (Dec. 2006=100) . . .	02	1.186	169.1	167.7	-0.7	1.6	-0.2	0.1	-0.8
Fish and crustaceans, molluscs and other aquatic invertebrates.....	03	0.404	203.4	206.9	2.1	1.3	-2.4	-2.3	1.7
Vegetable products.....	II	5.512	278.1	274.2	16.2	-3.7	0.5	-0.1	-1.4
Edible fruit and nuts; peel of citrus fruit or melons.....	08	0.989	155.1	158.6	20.0	4.2	3.8	3.8	2.3
Cereals.....	10	2.281	336.2	309.8	10.7	-1.0	0.6	0.5	-7.9
Oilseeds and misc. grains, seeds, fruits, plants, straw and fodder.....	12	1.730	295.5	287.6	18.2	-9.2	-0.5	-2.4	-2.7
Animal or vegetable fats and oils (Dec. 2009=100).....	III	0.299	131.7	132.0	-10.4	-2.6	-6.7	-1.6	0.2
Prepared foodstuffs, beverages, and tobacco.....	IV	2.979	166.2	166.8	12.0	0.4	0.5	-1.2	0.4
Preparations of vegetables, fruit, nuts or other parts of plants (Dec. 2009=100).....	20	0.339	110.8	111.2	1.5	-1.4	0.1	-0.2	0.4
Beverages, spirits, and vinegar (Dec. 2008=100).....	22	0.615	110.3	113.2	6.6	0.7	0.0	-0.4	2.6
Residues and waste from the food industries; prepared animal feed.....	23	0.808	279.2	271.3	33.7	1.3	1.2	-3.2	-2.8
Mineral products.....	V	9.068	296.9	299.0	-6.9	-0.4	-5.8	-1.1	0.7
Ores, slag and ash (Dec. 2012=100).....	26	0.483	100.0	97.7	-	-	-	-	-2.3
Mineral fuels, oils and residuals, bituminous substances and mineral waxes.....	27	8.403	292.9	295.4	-7.2	-0.5	-6.0	-1.3	0.9
Products of the chemical or allied industries.....	VI	11.482	154.5	154.6	0.1	0.2	-0.2	-0.2	0.1
Inorganic chemicals.....	28	1.016	184.2	184.4	-0.5	-0.9	0.7	-0.6	0.1
Organic chemicals.....	29	3.247	166.3	164.6	-1.4	0.5	-0.4	0.1	-1.0
Pharmaceutical products.....	30	2.710	124.7	125.7	1.0	0.4	-0.1	-0.2	0.8
Fertilizers (Dec. 2012=100).....	31	0.393	100.0	97.8	-	-	-	-	-2.2
Essential oils and resinoids; perfumery cosmetic or toilet preparations.....	33	0.709	136.5	137.2	1.9	-0.4	0.1	0.0	0.5
Soap; lubricants; waxes, polishing or scouring products; candles, pastes.....	34	0.458	122.8	120.9	-2.6	0.0	-0.1	-0.1	-1.5
Miscellaneous chemical products.....	38	1.740	153.1	154.9	1.6	0.1	-0.6	0.1	1.2
Plastics and articles thereof; rubber and articles thereof.....	VII	5.180	147.4	149.1	0.9	-0.1	-0.4	-0.5	1.2
Plastics and articles thereof.....	39	4.126	138.8	140.7	1.2	-0.1	-0.4	-0.6	1.4
Rubber and articles thereof.....	40	1.054	187.7	187.9	-0.5	-0.3	-0.1	-0.5	0.1
Raw hides, skins, leather, furskins, travel goods, etc.....	VIII	0.377	136.8	141.6	14.7	0.8	1.5	1.3	3.5
Wood, wood charcoal, cork, straw, basketware and wickerwork.....	IX	0.564	110.0	110.1	3.8	-0.3	0.0	0.0	0.1
Woodpulp, recovered paper, and paper products.....	X	2.171	117.3	120.5	2.8	1.1	0.8	0.2	2.7
Woodpulp and recovered paper.....	47	0.571	119.0	128.5	4.9	2.0	2.9	1.0	8.0
Paper and paperboard; articles of paper pulp, paper or paperboard.....	48	1.170	117.0	118.2	0.7	0.2	0.0	-0.3	1.0
Printed material.....	49	0.430	125.8	126.2	5.5	2.8	0.1	0.2	0.3
Textile and textile articles.....	XI	1.758	126.0	127.4	-4.1	-0.8	0.2	0.4	1.1
Cotton, including yarns and woven fabrics thereof.....	52	0.484	132.5	135.3	-19.2	-3.1	0.2	1.5	2.1
Stone, plaster, cement, asbestos, ceramics, glass etc.....	XIII	0.757	118.2	117.8	0.9	0.4	0.0	-0.1	-0.3

See footnotes at end of table.

Table 6. U.S. export price indexes and percent changes for selected categories of goods: January 2012 to January 2013 — Continued

[200=100, unless otherwise noted]

Description	Harmonized system	Relative importance Dec. 2012 ¹	Index		Percent change				
			Dec. 2012	Jan. 2013	Annual Jan. 2012 to Jan. 2013	Monthly			
						Sept. 2012 to Oct. 2012	Oct. 2012 to Nov. 2012	Nov. 2012 to Dec. 2012	Dec. 2012 to Jan. 2013
Glass and glassware.....	70	0.392	98.6	97.1	-1.6	0.3	0.0	-0.2	-1.5
Pearls, stones, precious metals, imitation jewelry, and coins.....	XIV	5.374	285.9	282.5	0.1	3.7	-1.5	-0.1	-1.2
Base metals and articles of base metals.....	XV	5.465	172.0	170.6	-3.0	0.5	-0.2	0.5	-0.8
Iron and steel.....	72	1.582	201.9	198.5	-9.8	-1.8	2.1	1.2	-1.7
Articles of iron or steel.....	73	1.331	171.0	168.0	-2.7	0.0	-0.6	-0.6	-1.8
Copper and articles thereof.....	74	0.640	253.8	254.8	2.7	4.5	-4.3	2.6	0.4
Aluminum and articles thereof.....	76	0.859	126.0	126.8	0.2	2.3	-1.0	0.2	0.6
Tools, implements, cutlery, spoons and forks, of base metal; parts thereof.....	82	0.404	133.1	131.7	2.1	1.1	0.0	0.0	-1.1
Miscellaneous articles of base metal.....	83	0.321	145.6	145.6	6.9	0.0	0.0	-0.3	0.0
Machinery, electrical equipment, TV image and sound recorders, parts, etc.....	XVI	27.730	96.9	97.5	0.4	0.1	0.0	0.0	0.6
Machinery and mechanical appliances; parts thereof.....	84	16.538	110.6	111.4	1.3	0.0	0.2	-0.1	0.7
Electrical machinery and equipment and parts and accessories thereof.....	85	11.192	82.0	82.4	-0.8	0.2	-0.2	0.0	0.5
Vehicles, aircraft, vessels and associated transport equipment.....	XVII	11.847	126.9	127.5	1.4	0.0	0.0	0.1	0.5
Motor vehicles and their parts.....	87	8.043	113.0	113.4	1.0	-0.1	0.1	0.0	0.4
Optical, photo, measuring, medical & musical instruments; & timepieces.....	XVIII	5.821	106.2	107.4	2.6	0.1	0.0	0.0	1.1
Miscellaneous manufactured articles.....	XX	1.340	111.1	111.0	2.2	0.4	0.2	0.2	-0.1
Furniture; stuffed furnishings; lamps and lighting fittings nesoi;.....	94	0.722	121.6	121.4	2.2	0.7	0.3	0.3	-0.2
Toys, games and sports equipment; parts and accessories thereof.....	95	0.510	90.9	90.9	0.1	0.0	0.0	0.0	0.0

¹ Relative importance figures are based on 2011 trade values.

NOTES: Data may be revised in each of the three months after original publication.

Dash = Not available

Table 7. U.S. import price indexes and percent changes by locality of origin: January 2012 to January 2013
 [2000=100, unless otherwise noted]

Description	Relative importance Dec. 2012 ¹	Index		Percent change				
		Dec. 2012	Jan. 2013	Annual	Monthly			
				Jan. 2012 to Jan. 2013	Sept. 2012 to Oct. 2012	Oct. 2012 to Nov. 2012	Nov. 2012 to Dec. 2012	Dec. 2012 to Jan. 2013
Industrialized Countries²	100.000	131.2	131.9	-0.5	0.5	0.1	-0.6	0.5
Nonmanufactured articles.....	11.054	215.8	217.7	-10.3	2.2	0.4	-6.1	0.9
Manufactured articles.....	88.363	124.2	124.9	1.1	0.2	0.0	0.1	0.6
Other Countries³	100.000	138.7	139.5	-1.9	-0.2	-0.9	-0.3	0.6
Nonmanufactured articles.....	22.148	342.0	351.4	-3.2	-0.4	-2.9	-0.7	2.7
Manufactured articles.....	77.506	110.7	110.6	-1.3	-0.2	-0.3	-0.1	-0.1
Canada	100.000	149.6	150.9	-2.3	0.7	0.3	-1.8	0.9
Nonmanufactured articles.....	27.786	205.0	207.6	-10.6	3.1	0.7	-6.1	1.3
Manufactured articles.....	71.163	138.9	139.8	1.6	-0.1	0.1	0.1	0.6
European Union⁴	100.000	133.7	135.2	0.1	0.7	0.0	-1.1	1.1
Nonmanufactured articles.....	1.081	370.0	386.5	4.0	1.1	-2.9	-0.1	4.5
Manufactured articles.....	98.435	130.0	131.4	-0.1	0.8	0.0	-1.1	1.1
France (Dec. 2003=100)	100.000	120.4	121.0	-0.2	0.3	0.2	-0.1	0.5
Germany (Dec. 2003=100)	100.000	114.6	115.5	1.2	0.3	0.2	-0.3	0.8
United Kingdom (Dec. 2003=100)	100.000	132.5	133.3	-0.2	0.4	-0.6	-1.3	0.6
Latin America⁵	100.000	173.7	175.2	-4.1	-0.4	-2.4	0.1	0.9
Nonmanufactured articles.....	31.009	358.3	368.3	-8.3	-1.5	-4.9	-0.3	2.8
Manufactured articles.....	68.557	133.1	133.1	-1.6	0.1	-0.9	0.3	0.0
Mexico (Dec. 2003=100)	100.000	142.6	143.4	-4.0	-0.3	-1.7	-0.1	0.6
Nonmanufactured articles (Dec. 2008=100).....	18.118	189.8	195.3	-10.5	-1.8	-5.8	-0.9	2.9
Manufactured articles (Dec. 2008=100)....	81.529	94.1	94.2	-2.1	0.1	-0.6	0.0	0.1
Pacific Rim (Dec. 2003=100)⁶	100.000	104.2	104.1	-0.8	0.0	-0.2	0.1	-0.1
China (Dec. 2003=100)	100.000	104.4	104.3	-1.0	-0.2	-0.1	0.0	-0.1
Japan	100.000	102.8	102.6	0.3	0.1	-0.1	-0.1	-0.2
Asian NICs⁷	100.000	90.4	90.7	0.1	0.2	-0.8	-0.1	0.3
ASEAN (Dec. 2003=100)⁸	100.000	104.1	104.6	-0.5	0.0	-0.7	0.2	0.5
Asia Near East (Dec. 2003=100)⁹	100.000	270.1	276.1	1.1	1.3	-0.9	-0.7	2.2

1 Relative figures are based on 2011 trade values.

2 Western Europe, Canada, Japan, Australia, New Zealand and South Africa.

3 Eastern Europe, Latin America, OPEC countries, and other countries in Asia, Africa and the Western Hemisphere.

4 European Union countries.

5 Mexico, Central America, South America and the Caribbean.

6 China, Japan, Australia, Brunei, Indonesia, Macao, Malaysia, New Zealand, Papua New Guinea, Philippines and the Asian Newly Industrialized Countries.

7 Asian Newly Industrialized Countries - Hong Kong, Singapore, South Korea and Taiwan.

8 Association of Southeast Asian Nations - Brunei, Cambodia, Indonesia, Laos, Malaysia, Myanmar, Philippines, Singapore, Thailand and Vietnam.

9 Bahrain, Iran, Iraq, Israel, Jordan, Kuwait, Lebanon, Oman, Qatar, Saudi Arabia, Syria, United Arab Emirates and Yemen.

NOTES: Data may be revised in each of the three months after original publication.

Regions are not mutually exclusive.

Dash = Not available

Table 8. U.S. international price indexes and percent changes for selected transportation services: January 2012 to January 2013

[2000=100, unless otherwise noted]

Description	Relative importance Dec. 2012 ¹	Index		Percent change				
		Dec. 2012	Jan. 2013	Annual	Monthly			
				Jan. 2012 to Jan. 2013	Sept. 2012 to Oct. 2012	Oct. 2012 to Nov. 2012	Nov. 2012 to Dec. 2012	Dec. 2012 to Jan. 2013
Air Freight								
Import Air Freight	100.000	175.8	176.2	2.9	1.3	0.6	-0.7	0.2
Europe (Dec. 2003=100).....	21.247	162.2	165.3	0.5	3.8	1.8	-2.7	1.9
Asia.....	74.465	156.7	156.3	4.0	0.5	0.2	-0.1	-0.3
Export Air Freight	100.000	147.0	149.4	2.0	1.2	-0.3	-0.7	1.6
Europe (Dec. 2006=100).....	35.184	129.6	133.0	1.1	-1.3	-0.4	-0.3	2.6
Inbound Air Freight	100.000	167.5	165.7	5.3	1.2	1.8	-0.6	-1.1
Europe (Dec. 2003=100).....	21.359	149.2	151.4	2.9	3.2	1.3	-1.7	1.5
Asia.....	68.349	154.3	151.1	7.2	0.6	2.3	-0.1	-2.1
Outbound Air Freight	100.000	148.0	148.1	2.8	0.3	1.3	-0.8	0.1
Europe (Dec. 2003=100).....	27.820	161.7	161.6	-0.4	-1.3	0.3	-0.6	-0.1
Asia.....	52.489	141.6	141.8	5.0	0.9	2.3	-1.0	0.1
Air Passenger Fares								
Import Air Passenger Fares	100.000	194.2	187.0	3.9	2.0	-0.9	6.8	-3.7
Europe.....	40.999	207.2	210.8	14.1	3.7	2.4	2.1	1.7
Asia.....	27.546	171.3	158.1	1.4	-0.3	-3.0	16.1	-7.7
Latin America/Caribbean.....	9.870	185.1	163.5	-8.5	1.5	6.3	9.4	-11.7
Export Air Passenger Fares	100.000	193.7	211.8	8.4	-0.4	-2.2	5.9	9.3
Europe.....	27.269	222.2	221.1	6.0	-2.2	0.6	2.6	-0.5
Asia.....	31.314	183.7	205.4	8.1	-0.9	-4.1	10.9	11.8
Latin America/Caribbean.....	24.243	223.7	244.3	15.0	-0.4	0.4	3.8	9.2

¹ Relative importance figures are based on 2011 trade values.

NOTES: Data may be revised in each of the three months after original publication.

Dash = Not available

TECHNICAL NOTE

Import and Export Merchandise and Services Price Indexes -- All indexes use a modified Laspeyres formula and are not seasonally adjusted. Price indexes are reweighted annually, with a two-year lag in the weights. Published series use a base year of 2000=100 where possible. More detailed index series and additional information may be obtained at <http://www.bls.gov/mxp>, or by calling (202) 691-7101.

Merchandise Goods Classification Systems -- The merchandise price indexes are published using three classification systems. Items are classified by end use according to the Bureau of Economic Analysis Classification System, by industry according to the North American Industry Classification System (NAICS), and by product category according to the Harmonized System (HS). While classification by end use and product category are self-explanatory, some notes are in order for classifying items by industry. In the NAICS imports and exports tables, items are classified by output industry, not input industry. As an example, NAICS import index 326 (plastics and rubber products manufacturing) include outputs such as manufactured plastic rather than inputs such as petroleum. The NAICS classification structure also matches the classification system used by the PPI (Producer Price Index) to produce the NAICS primary products indexes.

Import Price Indexes -- Products have been classified by the Harmonized Tariff Schedule of the United States Annotated (TSUSA). Import prices are based on U.S. dollar prices paid by the U.S. importer. The prices are generally either "free on board" (f.o.b.) foreign port or "cost, insurance, and freight" (c.i.f.) U.S. port transaction prices, depending on the practices of the individual industry. The index for crude petroleum is calculated from data collected by the U.S. Department of Energy.

Export Price Indexes -- Products have been classified by the Harmonized Schedule B classification system of the U.S. Bureau of the Census. The prices used are generally either "free alongside ship" (f.a.s.) factory or "free on board" (f.o.b.) transaction prices, depending on the practices of the individual industry. Prices used in the grain index, excluding rice, are obtained from the U.S. Department of Agriculture.

Services Price Indexes -- Starting in September 2008 the Import Air Passenger Fares Indexes represent changes in the average revenue per passenger received by foreign carriers from U.S. residents and are calculated from data obtained from an airline consulting service. These data include tickets sold by travel agencies and travel websites. Tickets sold directly by the airlines are excluded, as are frequent flyer tickets generally. Starting in January 2008 the Export Air Passenger Fares Indexes represent changes in the average revenue per passenger received by U.S. carriers from foreign residents and are calculated from data collected directly from airlines. These data include frequent flyer tickets and those sold by consolidators. Taxes and fees are included in the Import Air Passenger Fares Index and excluded from the Export Air Passenger Fares Index. The Air Freight Indexes are calculated from data collected directly from airlines. These data exclude mail and passenger baggage. The scope of the service being priced is the movement of freight from airport to airport only, and does not include any ground transportation or port service. The Air Freight Indexes are presented using two definitions: Balance of Payments (which represent transactions between U.S. and foreign residents) and International (which represent transactions inbound to and outbound from the U.S.). Fact sheets specifying detailed information for each services industry are available at <http://www.bls.gov/mxp> under "MXP Publications."

Import Indexes by Locality of Origin -- Prices used in these indexes are a subset of the data collected for the Import Price Indexes. Beginning with January 2002, the indexes are defined by locality of origin using a nomenclature based upon the North American Industry Classification System (NAICS). Nonmanufactured goods are defined as NAICS 11 and 21 and manufactured goods are defined as NAICS 31-33.

Revision Policy -- To reflect the availability of late reports and corrections by respondents, monthly data may be revised in each of the three months after original publication. After three months, no further data revisions take place. So, for example, data released in the January release will be subject to revision in the releases for February, March, and April.

Uses of the Data -- The primary use of the indexes is to deflate trade statistics, notably the foreign trade sector of the National Income and Product Accounts constructed by the Department of Commerce. Other published indexes are useful for general market analysis. For trade in international services, Balance of Payments indexes are used for deflating National Income and Product Accounts, while International indexes are more appropriate for market analysis. Merchandise and services indexes also can be used to study U.S. competitiveness and to compute price elasticities, and the merchandise import indexes by country or region of origin are useful in terms of trade analysis.

E-Mail Subscription -- The U.S. Import and Export Price Indexes news release is available through an e-mail subscription service at (<http://www.bls.gov/bls/list.htm>).

Additional Information -- More detailed data are available on the Import/Export Price Indexes home page at (<http://www.bls.gov/mxp>). Flat Files and the FTP server are available for users requiring access to either a large volume of time series data or other related documentation. The FTP site can be accessed at <ftp://ftp.bls.gov>. For technical assistance in using the BLS Internet site, send e-mail to (labstat.helpdesk@bls.gov). For Import/Export Price Index data requests, send e-mail to (mxpinfo@bls.gov).

Information from this release will be made available to sensory impaired individuals upon request. Voice phone: 202-691-5200; Federal Relay Service: 1-800-877-8339.