

Transmission of material in this release is embargoed until  
8:30 a.m. (EST) Wednesday, December 12, 2012

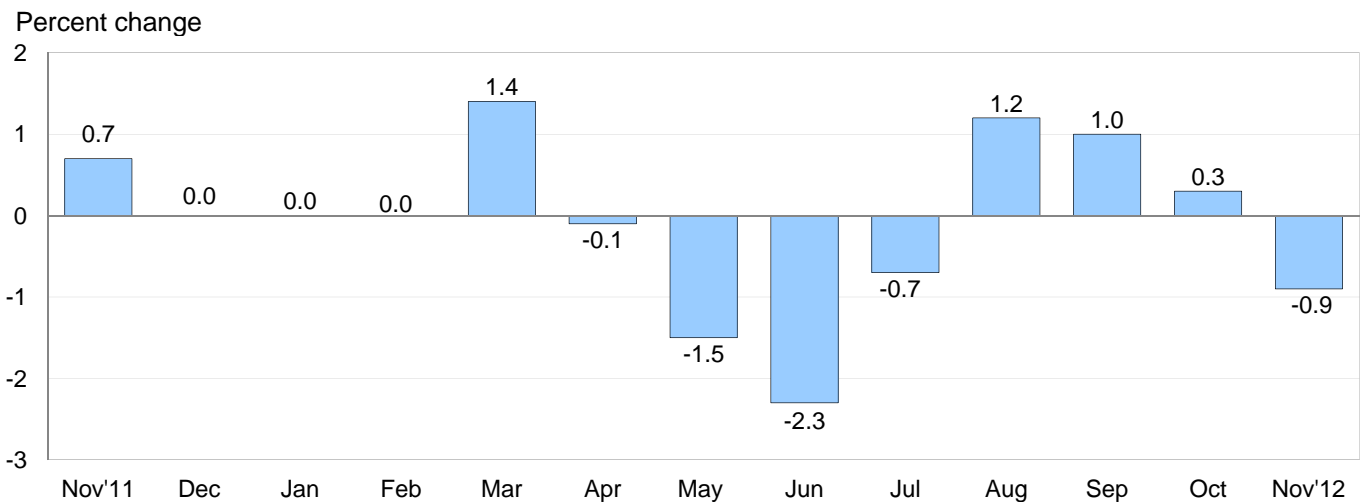
USDL-12-2406

Technical information: (202) 691-7101 • MXPinfo@bls.gov • www.bls.gov/mxp  
Media contact: (202) 691-5902 • PressOffice@bls.gov

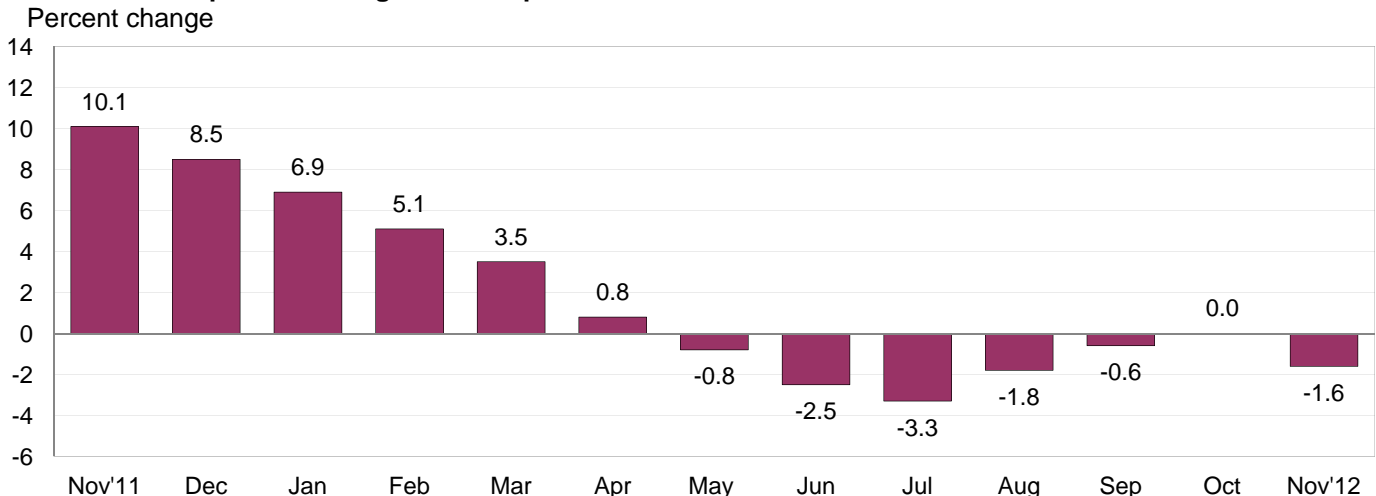
## U.S. IMPORT AND EXPORT PRICE INDEXES – NOVEMBER 2012

U.S. import prices decreased 0.9 percent in November, the U.S. Bureau of Labor Statistics reported today, following increases in each of the three previous months. The decline was primarily led by lower fuel prices. The price index for U.S. exports also fell in November, decreasing 0.7 percent after remaining unchanged in October.

**Chart 1. One-month percent change in the Import Price Index: November 2011 – November 2012**



**Chart 2. 12-month percent change in the Import Price Index: November 2011 – November 2012**



**All Imports:** Import prices fell for the first time since July after rising 2.5 percent over the previous three months. A 3.0 percent decline in fuel prices mainly drove the November decrease in import prices, although nonfuel prices also decreased for the month. The price index for overall imports fell 1.6 percent over the past 12 months, a contrast to the previous 12-month period ended in November 2011 when import prices rose 10.1 percent.

**Fuel Imports:** Import fuel prices fell 3.0 percent in November after edging down 0.1 percent the previous month. The November decline was the largest downturn since an 8.5 percent drop in June. A 3.6 percent decline in petroleum prices in November more than offset an 18.2 percent advance in natural gas prices. Fuel prices decreased 7.0 percent for the year ended in November following a 32.4 percent rise for the November 2010-11 period. Falling prices for both petroleum and natural gas over the past year, down 7.0 percent and 7.4 percent, respectively, each contributed to the 12-month drop in overall fuel prices.

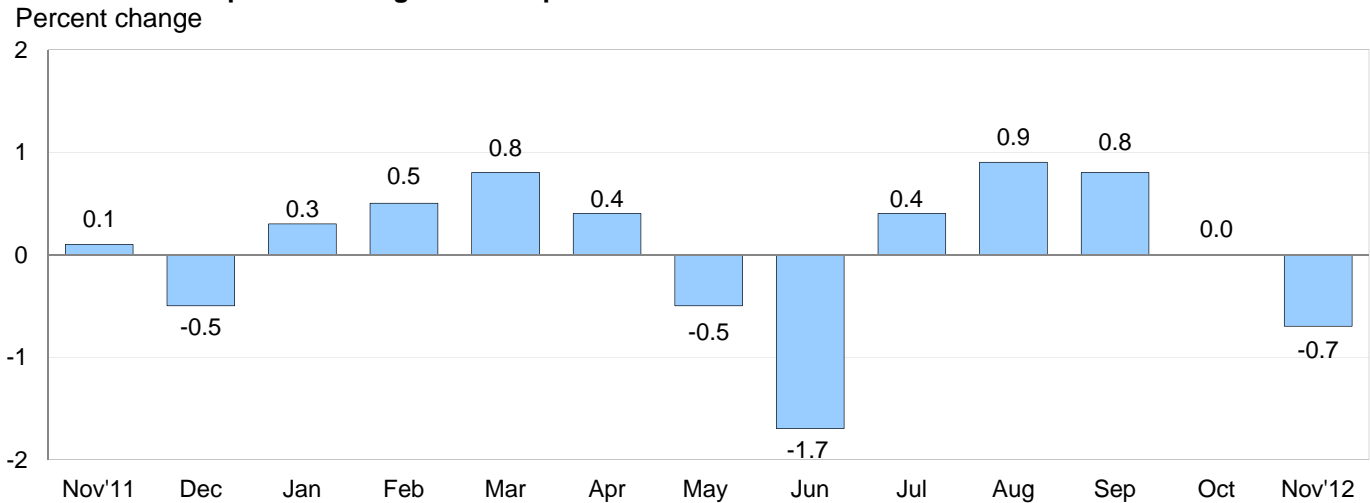
**All Imports Excluding Fuel:** The price index for nonfuel imports fell 0.2 percent in November after rising 0.4 percent in October and 0.2 percent in September. In November, most of the major finished goods categories contributed to the decline as prices for capital goods; foods, feeds, and beverages; nonfuel industrial supplies and materials; and consumer goods all fell. Despite the November decrease, prices for nonfuel imports rose 0.2 percent over the past year as higher finished goods prices more than offset lower prices for nonfuel industrial supplies and materials and foods, feeds, and beverages.

**Table A. Percent changes**

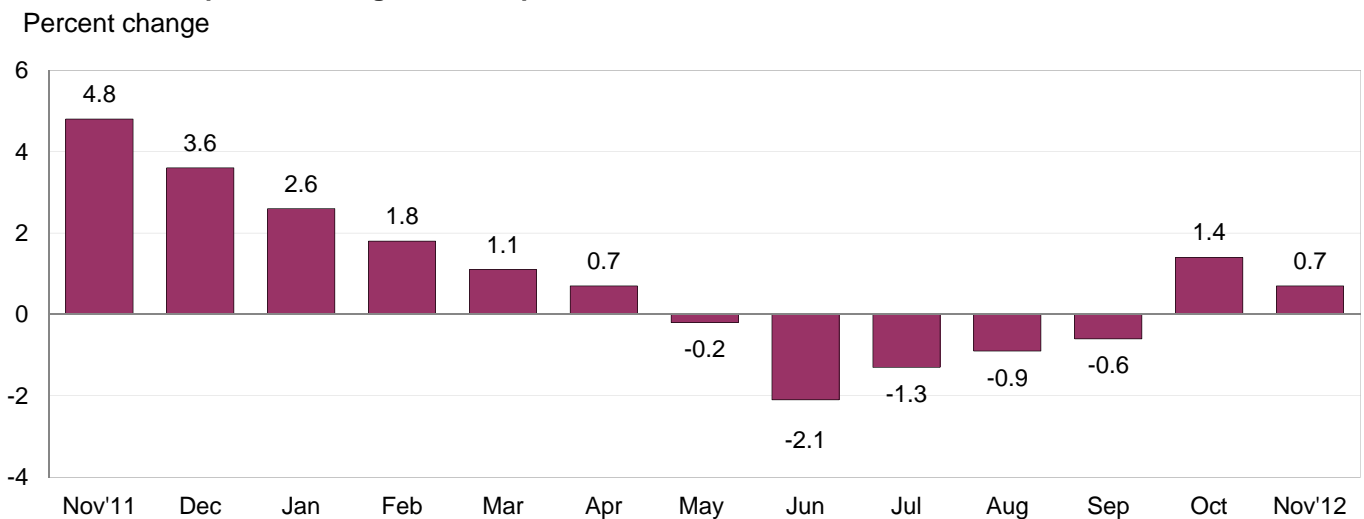
| Month                  | IMPORTS          |                   |                  | EXPORTS     |                      |                          |
|------------------------|------------------|-------------------|------------------|-------------|----------------------|--------------------------|
|                        | All imports      | Fuel imports      | Nonfuel imports  | All exports | Agricultural exports | Non-agricultural exports |
| <b>2011</b>            |                  |                   |                  |             |                      |                          |
| November.....          | 0.7              | 3.4               | -0.2             | 0.1         | 1.7                  | -0.2                     |
| December.....          | 0.0              | -0.4              | 0.1              | -0.5        | -2.3                 | -0.2                     |
| <b>2012</b>            |                  |                   |                  |             |                      |                          |
| January.....           | 0.0              | -0.2              | 0.2              | 0.3         | 1.1                  | 0.2                      |
| February.....          | 0.0              | -0.1              | 0.0              | 0.5         | -0.4                 | 0.6                      |
| March.....             | 1.4              | 4.4               | 0.4              | 0.8         | 2.4                  | 0.5                      |
| April.....             | -0.1             | -0.9              | 0.2              | 0.4         | 2.0                  | 0.2                      |
| May.....               | -1.5             | -5.6              | -0.1             | -0.5        | 0.5                  | -0.6                     |
| June.....              | -2.3             | -8.5              | -0.3             | -1.7        | -3.5                 | -1.5                     |
| July.....              | -0.7             | -2.0              | -0.4             | 0.4         | 6.0                  | -0.2                     |
| August.....            | 1.2              | 6.1               | -0.2             | 0.9         | 4.8 <sup>r</sup>     | 0.4                      |
| September.....         | 1.0 <sup>r</sup> | 3.8 <sup>r</sup>  | 0.2              | 0.8         | 1.3 <sup>r</sup>     | 0.7                      |
| October.....           | 0.3 <sup>r</sup> | -0.1 <sup>r</sup> | 0.4 <sup>r</sup> | 0.0         | -1.9                 | 0.2                      |
| November.....          | -0.9             | -3.0              | -0.2             | -0.7        | 0.1                  | -0.7                     |
| Nov. 2010 to 2011..... | 10.1             | 32.4              | 3.7              | 4.8         | 5.4                  | 4.8                      |
| Nov. 2011 to 2012..... | -1.6             | -7.0              | 0.2              | 0.7         | 10.0                 | -0.4                     |

r Revised

**Chart 3. One-month percent change in the Export Price Index: November 2011 – November 2012**



**Chart 4. 12-month percent change in the Export Price Index: November 2011 – November 2012**



**All Exports:** Prices for overall exports decreased 0.7 percent in November after recording no change in October. The decline was driven by lower nonagricultural prices which more than offset a 0.1 percent uptick in agricultural prices. Despite the November decline, the price index for overall exports rose 0.7 percent over the past year.

**Agricultural Exports:** Agricultural prices advanced 0.1 percent in November, led by a 5.9 percent increase in fruit prices and a 2.4 percent rise in wheat prices. In contrast, prices for fish, corn, and soybeans all declined for the month. Prices for agricultural exports increased 10.0 percent over the past 12 months. That advance was driven by a 30.2 percent rise in soybeans prices, a 14.5 percent increase in corn prices, and a 19.8 percent advance in wheat prices.

**All Exports Excluding Agriculture:** The price index for nonagricultural exports declined 0.7 percent in November following increases over the three previous months. The November drop was led by lower prices for nonagricultural industrial supplies and materials and consumer goods. The decrease in November helped drive nonagricultural prices down 0.4 percent over the past 12 months.

## SELECTED NOVEMBER HIGHLIGHTS

### Import Prices

**Imports by Locality of Origin:** Prices for imports from China fell for the third consecutive month in November, edging down 0.1 percent following 0.2 percent declines in October and September. Import prices from China have not recorded a monthly advance since a 0.1 percent rise in February and decreased 0.7 percent over the past year. The index had previously increased 4.0 percent between November 2010 and November 2011. The price index for imports from Mexico also decreased in November falling 1.3 percent. In contrast, the price for imports from Canada ticked up 0.1 percent. Import prices from the European Union and Japan were unchanged in November.

**Nonfuel Industrial Supplies and Materials:** The price index for nonfuel industrial supplies and materials declined 0.4 percent in November after rising 1.2 percent the previous month. Both the November decrease and October advance were led by unfinished metals prices which fell 0.7 percent in November following a 4.5 percent increase the previous month.

**Finished Goods:** Finished goods prices were mostly down in November as capital goods prices decreased 0.3 percent and consumer goods edged down 0.1 percent. Prices for automotive vehicles were unchanged. The November drop in capital goods prices was driven by a 0.6 percent decline in the price index for computers, peripherals, and semiconductors.

**Foods, Feeds, and Beverages:** Prices for import foods, feeds, and beverages decreased 1.3 percent in November following a 0.2 percent rise in October. The November decline was driven by a 14.5 percent drop in coffee prices and a 5.9 percent decrease in vegetable prices.

**Transportation Services:** Import air passenger fares fell 0.9 percent in November after rising 2.0 percent the previous month. Lower Asian fares more than offset increasing European and Latin American/Caribbean fares. Despite the decline, import air passenger fares rose 2.9 percent for the year ended in November. Prices for import air freight advanced 0.5 percent in November but decreased 0.5 percent over the past 12 months.

### Export Prices

**Nonagricultural Industrial Supplies and Materials:** Nonagricultural industrial supplies and materials prices fell 2.0 percent in November following a 0.5 percent increase in October. The November drop was driven by a 6.0 percent decrease in export fuel prices.

**Finished Goods:** Finished goods prices were mixed in November; capital goods prices rose 0.2 percent, consumer goods prices fell 0.2 percent, and the price index for automotive vehicles remained unchanged. The increase in capital goods prices was led by a 3.3 percent advance in the price index for computer peripherals.

**Transportation Services:** Export air passenger fares rose 0.4 percent in November, led by higher Latin American/Caribbean and European fares. The index for export air passenger fares advanced 0.9 percent for the November 2011-12 period. Export air freight prices declined 0.3 percent in November.

---

**Import and Export Price Index data for December 2012 are scheduled for release on Friday, January 11, 2013 at 8:30 a.m. (EST).**

**Table 1. U.S. import price indexes and percent changes for selected categories of goods: November 2011 to November 2012**

[2000=100, unless otherwise noted]

| Description  | End Use | Relative importance Oct. 2012 <sup>1</sup> | Index     |           | Percent change                      |                              |                                  |                               |                              |
|--|---------|--|-----------|-----------|-------------------------------------|------------------------------|----------------------------------|-------------------------------|------------------------------|
|  |         |  | Oct. 2012 | Nov. 2012 | Annual<br>Nov. 2011 to<br>Nov. 2012 | Monthly                      |                                  |                               |                              |
|  |         |  |           |           |                                     | July 2012<br>to Aug.<br>2012 | Aug.<br>2012 to<br>Sept.<br>2012 | Sept.<br>2012 to<br>Oct. 2012 | Oct. 2012<br>to Nov.<br>2012 |
| <b>All commodities.....</b>  |         | 100.000                                    | 141.2     | 139.9     | -1.6                                | 1.2                          | 1.0                              | 0.3                           | -0.9                         |
| <b>All imports excluding food and fuels (Dec. 2010=100).....</b>             |         | 71.266                                     | 103.6     | 103.5     | 0.3                                 | -0.1                         | 0.0                              | 0.4                           | -0.1                         |
| <b>All imports excluding petroleum.....</b>                                  |         | 77.353                                     | 116.4     | 116.3     | 0.0                                 | -0.1                         | 0.1                              | 0.4                           | -0.1                         |
| <b>All imports excluding fuels (Dec. 2001=100)..</b>                         |         | 76.359                                     | 120.8     | 120.5     | 0.2                                 | -0.2                         | 0.2                              | 0.4                           | -0.2                         |
| <b>Foods, feeds, &amp; beverages.....</b>                                    | 0       | 5.093                                      | 171.9     | 169.6     | -2.1                                | -0.5                         | 1.4                              | 0.2                           | -1.3                         |
| Agricultural foods, feeds & beverages,<br>excluding distilled beverages..... | 00      | 3.971                                      | 194.7     | 190.9     | -2.1                                | -0.4                         | 1.9                              | 0.2                           | -2.0                         |
| Nonagricultural foods (fish, distilled<br>beverages).....                    | 01      | 1.122                                      | 120.3     | 121.6     | -2.0                                | -0.7                         | -0.3                             | 0.2                           | 1.1                          |
| <b>Industrial supplies &amp; materials.....</b>                              | 1       | 36.828                                     | 256.6     | 251.4     | -4.9                                | 3.7                          | 2.4                              | 0.4                           | -2.0                         |
| Industrial supplies & materials excluding<br>petroleum.....                  |         | 14.181                                     | 165.1     | 165.9     | -1.6                                | -0.1                         | 0.0                              | 1.3                           | 0.5                          |
| Industrial supplies & materials excluding<br>fuels (Dec. 2001=100).....      |         | 13.187                                     | 189.2     | 188.5     | -1.0                                | -0.3                         | 0.0                              | 1.2                           | -0.4                         |
| Industrial supplies & materials, durable.....                                |         | 7.846                                      | 179.0     | 178.1     | -1.0                                | -0.6                         | 0.5                              | 2.3                           | -0.5                         |
| Industrial supplies & materials nondurable<br>excluding petroleum.....       |         | 5.341                                      | 149.1     | 151.4     | -2.4                                | 0.5                          | -0.6                             | 0.0                           | 1.5                          |
| Fuels & lubricants.....  | 10      | 23.641                                     | 342.8     | 332.5     | -7.0                                | 6.1                          | 3.8                              | -0.1                          | -3.0                         |
| Petroleum & petroleum products.....  | 100     | 22.648                                     | 384.6     | 370.8     | -7.0                                | 6.2                          | 4.0                              | -0.2                          | -3.6                         |
| Crude.....   | 10000   | 17.048                                     | 393.9     | 382.3     | -6.2                                | 6.4                          | 4.2                              | -0.5                          | -2.9                         |
| Fuels, n.e.s.-coals & gas.....   | 101     | 0.713                                      | 96.9      | 111.6     | -7.1                                | 4.5                          | 0.2                              | 5.7                           | 15.2                         |
| Gas-natural.....   | 10110   | 0.608                                      | 82.8      | 97.9      | -7.4                                | 5.3                          | -0.5                             | 7.4                           | 18.2                         |
| Paper & paper base stocks.....   | 11      | 0.583                                      | 112.3     | 112.2     | -3.4                                | -0.7                         | -0.5                             | -0.3                          | -0.1                         |
| Materials associated with nondurable<br>supplies & materials.....            | 12      | 4.847                                      | 175.0     | 174.6     | -0.7                                | 0.2                          | -0.7                             | -0.6                          | -0.2                         |
| Selected building materials.....   | 13      | 1.053                                      | 141.6     | 141.0     | 8.3                                 | 0.6                          | 1.3                              | 0.1                           | -0.4                         |
| Unfinished metals related to durable<br>goods.....                           | 14      | 3.662                                      | 268.1     | 266.2     | -4.0                                | -1.2                         | 0.6                              | 4.5                           | -0.7                         |
| Finished metals related to durable goods. ...                                | 15      | 1.556                                      | 164.2     | 163.5     | 0.6                                 | -0.2                         | 0.2                              | 1.4                           | -0.4                         |
| Nonmetals related to durable goods.....                                      | 16      | 1.486                                      | 114.2     | 114.4     | -1.2                                | -0.1                         | -0.1                             | 0.0                           | 0.2                          |
| <b>Capital goods.....</b>  | 2       | 22.258                                     | 93.4      | 93.1      | 0.3                                 | -0.1                         | 0.2                              | 0.0                           | -0.3                         |
| Electric generating equipment.....   | 20      | 2.900                                      | 119.8     | 119.9     | 1.2                                 | 0.1                          | 0.3                              | 0.2                           | 0.1                          |
| Nonelectrical machinery.....   | 21      | 17.704                                     | 86.3      | 86.0      | -0.1                                | -0.1                         | 0.2                              | 0.0                           | -0.3                         |
| Transportation equipment excluding motor<br>vehicles (Dec. 2001=100).....    | 22      | 1.654                                      | 134.0     | 134.0     | 4.0                                 | 0.1                          | -0.1                             | 0.1                           | 0.0                          |
| <b>Automotive vehicles, parts &amp; engines.....</b>                         | 3       | 11.647                                     | 115.1     | 115.1     | 1.6                                 | 0.1                          | 0.2                              | 0.3                           | 0.0                          |
| <b>Consumer goods, excluding automotives..</b>                               | 4       | 24.174                                     | 107.7     | 107.6     | 0.3                                 | -0.2                         | 0.0                              | 0.4                           | -0.1                         |
| Nondurables, manufactured.....   | 40      | 11.643                                     | 115.2     | 115.3     | 0.9                                 | -0.1                         | -0.1                             | 0.4                           | 0.1                          |
| Durables, manufactured.....  | 41      | 11.267                                     | 100.0     | 99.7      | -0.3                                | -0.1                         | 0.0                              | 0.5                           | -0.3                         |
| Nonmanufactured consumer goods.....  | 42      | 1.264                                      | 115.6     | 115.7     | 1.0                                 | -2.5                         | 0.1                              | 0.1                           | 0.1                          |

<sup>1</sup> Relative importance figures are based on 2010 trade values.

NOTES: Data may be revised in each of the three months after original publication.

Dash = Not available

**Table 2. U.S. export price indexes and percent changes for selected categories of goods: November 2011 to November 2012**

[2000=100, unless otherwise noted]

| Description  | End Use | Relative importance Oct. 2012 <sup>1</sup> | Index     |           | Percent change         |                        |                         |                         |                        |
|--|---------|--|-----------|-----------|------------------------|------------------------|-------------------------|-------------------------|------------------------|
|  |         |  | Oct. 2012 | Nov. 2012 | Annual                 | Monthly                |                         |                         |                        |
|  |         |  |           |           | Nov. 2011 to Nov. 2012 | July 2012 to Aug. 2012 | Aug. 2012 to Sept. 2012 | Sept. 2012 to Oct. 2012 | Oct. 2012 to Nov. 2012 |
| <b>All commodities</b> .....   |         | 100.000                                    | 134.5     | 133.6     | 0.7                    | 0.9                    | 0.8                     | 0.0                     | -0.7                   |
| <b>Agricultural commodities</b> .....  |         | 11.760                                     | 225.6     | 225.8     | 10.0                   | 4.8                    | 1.3                     | -1.9                    | 0.1                    |
| <b>All exports excluding food and fuels (Dec. 2010=100)</b> .....              |         | 80.468                                     | 102.9     | 102.7     | 0.3                    | 0.1                    | 0.4                     | 0.3                     | -0.2                   |
| <b>Nonagricultural commodities</b> .....                                       |         | 88.241                                     | 127.9     | 127.0     | -0.4                   | 0.4                    | 0.7                     | 0.2                     | -0.7                   |
| <b>Foods, feeds, &amp; beverages</b> .....                                     | 0       | 10.895                                     | 227.7     | 228.3     | 12.4                   | 4.6                    | 1.0                     | -1.7                    | 0.3                    |
| Agricultural foods, feeds & beverages, excluding distilled beverages.....      | 00      | 10.166                                     | 231.5     | 232.7     | 13.1                   | 4.8                    | 1.2                     | -1.9                    | 0.5                    |
| Nonagricultural foods (fish, distilled beverages).....                         | 01      | 0.729                                      | 194.4     | 189.6     | 3.8                    | 1.3                    | -0.3                    | 0.7                     | -2.5                   |
| <b>Industrial supplies &amp; materials</b> .....                               | 1       | 34.129                                     | 184.5     | 180.8     | -2.7                   | 1.4                    | 1.9                     | 0.4                     | -2.0                   |
| Industrial supplies & materials, durable.....                                  |         | 12.218                                     | 187.4     | 186.5     | -0.4                   | -0.5                   | 1.2                     | 2.0                     | -0.5                   |
| Industrial supplies & materials, nondurable.....                               |         | 21.913                                     | 183.7     | 178.5     | -4.0                   | 2.5                    | 2.3                     | -0.4                    | -2.8                   |
| Agricultural industrial supplies & materials...                                | 10      | 1.594                                      | 197.5     | 192.6     | -6.9                   | 4.3                    | 2.0                     | -1.8                    | -2.5                   |
| <b>Nonagricultural industrial supplies &amp; materials</b> .....               |         | 32.536                                     | 184.2     | 180.6     | -2.5                   | 1.3                    | 1.9                     | 0.5                     | -2.0                   |
| Fuels & lubricants.....  | 11      | 8.638                                      | 270.4     | 254.3     | -8.6                   | 4.6                    | 4.3                     | -0.9                    | -6.0                   |
| Nonagricultural supplies & materials excluding fuels & building materials..... | 12      | 22.963                                     | 173.7     | 172.8     | -0.3                   | 0.2                    | 1.1                     | 1.2                     | -0.5                   |
| Selected building materials.....   | 13      | 0.935                                      | 117.8     | 117.8     | 1.3                    | 0.2                    | 0.1                     | -0.8                    | 0.0                    |
| <b>Capital goods</b> .....   | 2       | 34.210                                     | 105.6     | 105.8     | 1.2                    | -0.1                   | 0.1                     | 0.0                     | 0.2                    |
| Electrical generating equipment.....   | 20      | 3.522                                      | 114.1     | 114.0     | 1.0                    | 0.1                    | 0.3                     | 0.2                     | -0.1                   |
| Nonelectrical machinery.....   | 21      | 24.760                                     | 94.8      | 95.0      | 0.8                    | -0.2                   | 0.0                     | 0.1                     | 0.2                    |
| Transportation equipment excluding motor vehicles (Dec. 2001=100).....         | 22      | 5.927                                      | 149.2     | 149.2     | 2.8                    | 0.0                    | 0.0                     | 0.0                     | 0.0                    |
| <b>Automotive vehicles, parts &amp; engines</b> .....                          | 3       | 8.118                                      | 112.4     | 112.4     | 0.4                    | -0.3                   | -0.2                    | -0.2                    | 0.0                    |
| <b>Consumer goods, excluding automotives</b> ..                                | 4       | 12.648                                     | 116.7     | 116.5     | -0.2                   | 0.0                    | 0.3                     | 0.0                     | -0.2                   |
| Nondurables, manufactured.....   | 40      | 5.914                                      | 115.8     | 115.7     | 1.8                    | 0.2                    | 0.3                     | 0.4                     | -0.1                   |
| Durables, manufactured.....  | 41      | 5.315                                      | 114.3     | 113.9     | 0.5                    | 0.0                    | 0.3                     | -0.4                    | -0.3                   |

<sup>1</sup> Relative importance figures are based on 2010 trade values.

NOTES: Data may be revised in each of the three months after original publication.

Dash = Not available

**Table 3. U.S. import price indexes and percent changes for selected categories of goods: November 2011 to November 2012**

[December 2005=100, unless otherwise noted]

| Description   | NAICS | Relative importance Oct. 2012 <sup>1</sup> | Index     |           | Percent change         |                        |                         |                         |                        |
|---|-------|--|-----------|-----------|------------------------|------------------------|-------------------------|-------------------------|------------------------|
|   |       |  | Oct. 2012 | Nov. 2012 | Annual                 | Monthly                |                         |                         |                        |
|   |       |  |           |           | Nov. 2011 to Nov. 2012 | July 2012 to Aug. 2012 | Aug. 2012 to Sept. 2012 | Sept. 2012 to Oct. 2012 | Oct. 2012 to Nov. 2012 |
| <b>Nonmanufactured articles.....</b>                              |       | 20.273                                     | 167.6     | 164.1     | -6.1                   | 5.5                    | 4.2                     | -0.1                    | -2.1                   |
| <b>Agriculture, forestry, fishing and hunting...</b>              | 11    | 1.859                                      | 174.3     | 165.4     | -5.8                   | -0.7                   | 2.7                     | 1.0                     | -5.1                   |
| Crop production.....  | 111   | 1.336                                      | 183.1     | 171.0     | -5.7                   | -0.3                   | 3.5                     | 1.0                     | -6.6                   |
| <b>Mining.....</b>  | 21    | 18.414                                     | 166.6     | 163.6     | -6.1                   | 6.2                    | 4.3                     | -0.1                    | -1.8                   |
| Mining (except oil and gas) (Dec. 2006=100).....                  | 212   | 0.319                                      | 140.2     | 139.0     | -7.8                   | -0.1                   | 0.8                     | -3.0                    | -0.9                   |
| <b>Manufactured articles.....</b>                                 |       | 79.267                                     | 118.1     | 117.4     | -0.5                   | 0.2                    | 0.3                     | 0.3                     | -0.6                   |
| <b>Manufactured goods, part 1.....</b>                            | 31    | 10.716                                     | 123.4     | 123.4     | -0.2                   | -0.2                   | -0.6                    | -0.2                    | 0.0                    |
| Food manufacturing.....   | 311   | 2.917                                      | 153.6     | 153.6     | -1.9                   | -0.4                   | -1.6                    | -0.9                    | 0.0                    |
| Beverage and tobacco product manufacturing.....                   | 312   | 0.844                                      | 112.0     | 112.1     | 0.1                    | 0.0                    | 0.4                     | 0.2                     | 0.1                    |
| Textile mills (Dec. 2011=100).....                                | 313   | 0.405                                      | 102.3     | 102.3     | -                      | 0.2                    | 0.5                     | -0.1                    | 0.0                    |
| Textile product mills.....  | 314   | 0.867                                      | 115.7     | 115.8     | -2.4                   | 0.0                    | -0.2                    | 0.1                     | 0.1                    |
| Apparel manufacturing.....  | 315   | 4.038                                      | 110.8     | 111.0     | -0.4                   | -0.4                   | -0.4                    | -0.2                    | 0.2                    |
| Leather and allied product manufacturing. . .                     | 316   | 1.645                                      | 120.8     | 120.8     | 3.8                    | 0.4                    | 0.0                     | 0.1                     | 0.0                    |
| <b>Manufactured goods, part 2.....</b>                            | 32    | 18.053                                     | 140.1     | 137.3     | -2.6                   | 1.5                    | 0.9                     | 0.2                     | -2.0                   |
| Wood product manufacturing.....                                   | 321   | 0.642                                      | 120.1     | 120.3     | 12.3                   | 1.0                    | 1.0                     | 0.2                     | 0.2                    |
| Paper manufacturing.....  | 322   | 1.081                                      | 110.4     | 110.5     | -1.7                   | -0.4                   | -0.2                    | -0.1                    | 0.1                    |
| Petroleum and coal products manufacturing.....                    | 324   | 4.768                                      | 175.4     | 162.3     | -10.9                  | 5.6                    | 2.6                     | 0.2                     | -7.5                   |
| Chemical manufacturing.....                                       | 325   | 8.750                                      | 134.9     | 135.0     | 0.0                    | 0.3                    | 0.2                     | 0.4                     | 0.1                    |
| Plastics and rubber products manufacturing.....                   | 326   | 1.892                                      | 127.6     | 127.5     | 1.2                    | 0.0                    | 0.1                     | 0.1                     | -0.1                   |
| Nonmetallic mineral product manufacturing.....                    | 327   | 0.832                                      | 129.6     | 129.4     | 1.0                    | -0.1                   | 0.2                     | -0.5                    | -0.2                   |
| <b>Manufactured goods, part 3.....</b>                            | 33    | 50.498                                     | 110.2     | 109.9     | 0.2                    | -0.3                   | 0.2                     | 0.5                     | -0.3                   |
| Primary metal manufacturing.....                                  | 331   | 4.260                                      | 176.8     | 175.0     | -3.4                   | -1.2                   | 0.5                     | 4.3                     | -1.0                   |
| Fabricated metal product manufacturing. . .                       | 332   | 2.566                                      | 130.7     | 130.4     | 1.2                    | -0.2                   | 0.5                     | 0.4                     | -0.2                   |
| Machinery manufacturing.....                                      | 333   | 5.656                                      | 121.9     | 121.8     | 2.0                    | 0.0                    | 0.3                     | 0.4                     | -0.1                   |
| Computer and electronic product manufacturing.....                | 334   | 15.411                                     | 82.2      | 81.7      | -1.1                   | -0.1                   | 0.1                     | -0.1                    | -0.6                   |
| Electrical equipment, appliance, and component manufacturing..... | 335   | 3.849                                      | 118.9     | 119.5     | 2.0                    | 0.1                    | -0.1                    | 0.3                     | 0.5                    |
| Transportation equipment manufacturing. . .                       | 336   | 12.330                                     | 112.3     | 112.5     | 2.1                    | 0.1                    | 0.2                     | 0.3                     | 0.2                    |
| Furniture and related product manufacturing.....                  | 337   | 1.311                                      | 113.8     | 113.8     | 0.7                    | -0.1                   | 0.5                     | -0.3                    | 0.0                    |
| Miscellaneous manufacturing.....                                  | 339   | 5.115                                      | 121.3     | 121.3     | -1.1                   | -1.1                   | -0.1                    | 0.3                     | 0.0                    |

<sup>1</sup> Relative importance figures are based on 2010 trade values.

NOTES: Data may be revised in each of the three months after original publication.

Dash = Not available

**Table 4. U.S. export price indexes and percent changes for selected categories of goods: November 2011 to November 2012**

[December 2005=100, unless otherwise noted]

| Description   | NAICS | Relative importance Oct. 2012 <sup>1</sup> | Index     |           | Percent change         |                        |                         |                         |                        |
|---|-------|--|-----------|-----------|------------------------|------------------------|-------------------------|-------------------------|------------------------|
|   |       |  | Oct. 2012 | Nov. 2012 | Annual                 | Monthly                |                         |                         |                        |
|   |       |  |           |           | Nov. 2011 to Nov. 2012 | July 2012 to Aug. 2012 | Aug. 2012 to Sept. 2012 | Sept. 2012 to Oct. 2012 | Oct. 2012 to Nov. 2012 |
| <b>Nonmanufactured articles.....</b>                              |       | 8.693                                      | 174.9     | 175.2     | 3.0                    | 5.0                    | 0.8                     | -3.3                    | 0.2                    |
| <b>Agriculture, forestry, fishing and hunting...</b>              | 11    | 6.895                                      | 217.9     | 217.3     | 12.8                   | 6.1                    | 1.5                     | -3.5                    | -0.3                   |
| Crop production.....  | 111   | 6.440                                      | 226.4     | 226.5     | 13.4                   | 5.5                    | 2.0                     | -3.8                    | 0.0                    |
| <b>Mining.....</b>  | 21    | 1.798                                      | 91.7      | 93.4      | -22.1                  | 1.3                    | -2.0                    | -2.7                    | 1.9                    |
| Mining (except oil and gas).....                                  | 212   | 1.223                                      | 108.8     | 107.3     | -24.9                  | 0.1                    | -1.5                    | -7.3                    | -1.4                   |
| <b>Manufactured articles.....</b>                                 |       | 88.399                                     | 121.7     | 120.8     | 0.6                    | 0.5                    | 0.8                     | 0.2                     | -0.7                   |
| <b>Manufactured goods, part 1.....</b>                            | 31    | 7.280                                      | 150.8     | 150.4     | 4.2                    | 1.5                    | 0.9                     | 0.4                     | -0.3                   |
| Food manufacturing.....   | 311   | 5.092                                      | 173.1     | 172.8     | 5.2                    | 1.6                    | 1.1                     | 0.6                     | -0.2                   |
| Beverage and tobacco product manufacturing.....                   | 312   | 0.601                                      | 127.7     | 125.3     | 8.3                    | 3.4                    | 2.2                     | -0.5                    | -1.9                   |
| Apparel manufacturing.....  | 315   | 0.425                                      | 122.8     | 122.8     | 5.0                    | 0.0                    | 1.1                     | 0.0                     | 0.0                    |
| <b>Manufactured goods, part 2.....</b>                            | 32    | 26.609                                     | 136.0     | 133.0     | -0.4                   | 1.8                    | 2.1                     | 0.1                     | -2.2                   |
| Wood product manufacturing.....                                   | 321   | 0.396                                      | 113.4     | 113.9     | -0.2                   | 0.5                    | 0.0                     | -0.7                    | 0.4                    |
| Paper manufacturing.....  | 322   | 1.825                                      | 119.6     | 119.1     | -2.1                   | 0.3                    | -0.1                    | 0.0                     | -0.4                   |
| Petroleum and coal products manufacturing.....                    | 324   | 6.520                                      | 177.3     | 163.6     | -3.7                   | 5.5                    | 5.7                     | -0.1                    | -7.7                   |
| Chemical manufacturing.....                                       | 325   | 14.893                                     | 131.6     | 130.8     | 0.2                    | 0.8                    | 0.9                     | 0.2                     | -0.6                   |
| Plastics and rubber products manufacturing.....                   | 326   | 2.229                                      | 121.0     | 121.8     | 4.9                    | -0.1                   | 2.6                     | 0.6                     | 0.7                    |
| Nonmetallic mineral product manufacturing.....                    | 327   | 0.745                                      | 111.4     | 111.5     | 0.5                    | -0.4                   | 0.0                     | -0.3                    | 0.1                    |
| <b>Manufactured goods, part 3.....</b>                            | 33    | 54.510                                     | 113.3     | 113.2     | 0.6                    | -0.2                   | 0.2                     | 0.4                     | -0.1                   |
| Primary metal manufacturing.....                                  | 331   | 4.857                                      | 175.5     | 173.5     | -2.3                   | -1.3                   | 1.8                     | 3.9                     | -1.1                   |
| Fabricated metal product manufacturing. ....                      | 332   | 2.648                                      | 132.1     | 132.1     | 2.6                    | 0.2                    | 0.1                     | 0.3                     | 0.0                    |
| Machinery manufacturing.....                                      | 333   | 11.039                                     | 121.0     | 121.2     | 2.9                    | 0.2                    | 0.1                     | 0.1                     | 0.2                    |
| Computer and electronic product manufacturing.....                | 334   | 14.137                                     | 89.0      | 89.1      | -0.4                   | -0.3                   | -0.2                    | 0.0                     | 0.1                    |
| Electrical equipment, appliance, and component manufacturing..... | 335   | 3.189                                      | 112.6     | 112.7     | 1.1                    | 0.1                    | 0.3                     | 0.1                     | 0.1                    |
| Transportation equipment manufacturing....                        | 336   | 13.255                                     | 116.5     | 116.5     | 1.4                    | -0.2                   | -0.1                    | -0.1                    | 0.0                    |
| Furniture and related product manufacturing (Dec. 2011=100).....  | 337   | 0.300                                      | 104.5     | 104.6     | -                      | 0.0                    | 0.1                     | 1.4                     | 0.1                    |
| Miscellaneous manufacturing.....                                  | 339   | 5.086                                      | 121.8     | 121.9     | -1.9                   | -0.1                   | 0.6                     | -0.5                    | 0.1                    |

1 Relative importance figures are based on 2010 trade values.

NOTES: Data may be revised in each of the three months after original publication.

Dash = Not available



**Table 5. U.S. import price indexes and percent changes for selected categories of goods: November 2011 to November 2012**

[2000=100, unless otherwise noted]

| Description  | Harmonized system | Relative importance Oct. 2012 <sup>1</sup> | Index     |           | Percent change                   |                        |                         |                         |                        |
|--|-------------------|--|-----------|-----------|----------------------------------|------------------------|-------------------------|-------------------------|------------------------|
|  |                   |  | Oct. 2012 | Nov. 2012 | Annual<br>Nov. 2011 to Nov. 2012 | Monthly                |                         |                         |                        |
|  |                   |  |           |           |                                  | July 2012 to Aug. 2012 | Aug. 2012 to Sept. 2012 | Sept. 2012 to Oct. 2012 | Oct. 2012 to Nov. 2012 |
| <b>Live animals; animal products.....</b>  | I                 | 1.127                                      | 161.4     | 164.2     | -1.5                             | -1.0                   | 0.3                     | -0.2                    | 1.7                    |
| Meat and edible meat offal.....  | 02                | 0.272                                      | 217.7     | 219.3     | 1.5                              | 0.9                    | 0.4                     | -0.8                    | 0.7                    |
| Fish and crustaceans, molluscs and other aquatic invertebrates.....                | 03                | 0.567                                      | 112.5     | 114.8     | -6.3                             | -1.6                   | -1.2                    | -0.1                    | 2.0                    |
| <b>Vegetable products.....</b>   | II                | 1.671                                      | 212.8     | 203.6     | -2.0                             | -0.5                   | 0.9                     | -0.7                    | -4.3                   |
| Edible vegetables, roots, and tubers.....  | 07                | 0.375                                      | 375.3     | 369.3     | 15.6                             | -1.9                   | 25.8                    | 0.5                     | -1.6                   |
| Edible fruit and nuts; peel of citrus fruit or melons.....                         | 08                | 0.445                                      | 112.5     | 107.8     | -5.3                             | -0.4                   | -0.6                    | -2.6                    | -4.2                   |
| Coffee, tea, mate and spices.....  | 09                | 0.402                                      | 262.8     | 233.0     | -18.9                            | -1.0                   | -6.5                    | 4.0                     | -11.3                  |
| <b>Animal or vegetable fats and oils (Dec. 2009=100).....</b>                      | III               | 0.242                                      | 123.9     | 121.2     | -8.2                             | -1.4                   | 1.2                     | -2.5                    | -2.2                   |
| <b>Prepared foodstuffs, beverages, and tobacco.....</b>                            | IV                | 2.375                                      | 157.6     | 157.5     | -0.5                             | 0.3                    | 0.3                     | 0.1                     | -0.1                   |
| Cocoa and cocoa preparations (Dec. 2009=100).....                                  | 18                | 0.186                                      | 86.9      | 88.3      | -8.5                             | 3.9                    | 1.1                     | 2.8                     | 1.6                    |
| Preparations of cereals, flour, starch or milk; bakers' wares (Dec. 2007=100)..... | 19                | 0.231                                      | 129.3     | 129.4     | 3.1                              | 0.3                    | 0.5                     | 0.4                     | 0.1                    |
| Preparations of vegetables, fruit, nuts, or other parts of plants.....             | 20                | 0.338                                      | 167.9     | 168.9     | -0.7                             | -0.5                   | -0.1                    | -1.0                    | 0.6                    |
| Beverages, spirits, and vinegar.....   | 22                | 0.797                                      | 122.3     | 122.4     | -0.2                             | 0.0                    | 0.3                     | 0.3                     | 0.1                    |
| <b>Mineral products.....</b>   | V                 | 23.347                                     | 345.2     | 334.1     | -7.0                             | 6.0                    | 3.9                     | -0.1                    | -3.2                   |
| Mineral fuels, oils and residuals, bituminous substances and mineral waxes.....    | 27                | 23.053                                     | 341.7     | 330.6     | -7.0                             | 6.1                    | 4.0                     | 0.0                     | -3.2                   |
| <b>Products of the chemical or allied industries.....</b>                          | VI                | 8.328                                      | 151.2     | 151.6     | 0.9                              | 0.3                    | 0.1                     | 0.5                     | 0.3                    |
| Inorganic chemicals.....   | 28                | 0.977                                      | 393.4     | 393.6     | 0.3                              | 1.1                    | 0.5                     | -0.9                    | 0.1                    |
| Organic chemicals.....   | 29                | 2.438                                      | 138.8     | 140.3     | 2.0                              | 0.4                    | -0.3                    | 0.3                     | 1.1                    |
| Pharmaceutical products.....   | 30                | 3.081                                      | 119.6     | 119.7     | 2.9                              | 0.0                    | 0.1                     | 2.2                     | 0.1                    |
| Fertilizers (Dec. 2009=100).....   | 31                | 0.426                                      | 134.3     | 131.8     | -12.8                            | 0.1                    | -0.2                    | -1.3                    | -1.9                   |
| Tanning extracts; dye, pigments, varnish, paints & putty (Dec. 2011=100).....      | 32                | 0.162                                      | 93.2      | 93.2      | -                                | -0.3                   | 0.0                     | -10.0                   | 0.0                    |
| Essential oils and resinoids (Dec. 2001=100).....                                  | 33                | 0.417                                      | 125.9     | 126.0     | 0.5                              | 0.4                    | -0.2                    | 0.4                     | 0.1                    |
| Miscellaneous chemical products.....   | 38                | 0.463                                      | 100.7     | 100.8     | -3.4                             | -0.4                   | 0.0                     | -1.1                    | 0.1                    |
| <b>Plastics and articles thereof; rubber and articles thereof.....</b>             | VII               | 3.087                                      | 152.1     | 151.8     | -0.6                             | 0.0                    | 0.3                     | 0.3                     | -0.2                   |
| Plastics and articles thereof.....   | 39                | 1.886                                      | 144.4     | 144.8     | 2.0                              | 0.1                    | 0.9                     | 0.4                     | 0.3                    |
| Rubber and articles thereof.....   | 40                | 1.201                                      | 167.1     | 165.6     | -4.4                             | -0.2                   | -0.7                    | 0.1                     | -0.9                   |
| <b>Raw hides, skins, leather, furskins, travel goods, etc.....</b>                 | VIII              | 0.585                                      | 126.2     | 126.2     | 2.4                              | 0.0                    | -0.1                    | 0.0                     | 0.0                    |
| Articles of leather; travel goods, bags, etc. of various materials.....            | 42                | 0.538                                      | 126.9     | 127.0     | 2.7                              | -0.1                   | 0.0                     | -0.1                    | 0.1                    |
| <b>Wood, wood charcoal, cork, straw, basketware and wickerwork.....</b>            | IX                | 0.677                                      | 146.0     | 145.7     | 12.4                             | 1.0                    | 1.1                     | 0.4                     | -0.2                   |
| <b>Woodpulp, recovered paper, and paper products.....</b>                          | X                 | 1.185                                      | 113.4     | 113.4     | -1.3                             | -0.2                   | -0.2                    | -0.1                    | 0.0                    |
| Pulp wood, waste paper, and paperboard (Dec. 2011=100).....                        | 47                | 0.175                                      | 98.6      | 97.6      | -                                | -1.9                   | -2.1                    | -1.2                    | -1.0                   |
| Paper and paperboard; articles of paper pulp, paper or paperboard.....             | 48                | 0.794                                      | 108.5     | 108.6     | -1.2                             | 0.0                    | 0.1                     | 0.3                     | 0.1                    |
| <b>Textile and textile articles.....</b>   | XI                | 5.165                                      | 114.5     | 114.6     | -0.9                             | -0.3                   | -0.3                    | -0.1                    | 0.1                    |
| Articles of apparel and clothing accessories, knitted or crocheted.....            | 61                | 1.985                                      | 104.5     | 104.8     | -1.5                             | -0.6                   | -0.8                    | -0.4                    | 0.3                    |

See footnotes at end of table.

**Table 5. U.S. import price indexes and percent changes for selected categories of goods: November 2011 to November 2012 — Continued**  
 [2000=100, unless otherwise noted]

| Description  | Harmonized system | Relative importance Oct. 2012 <sup>1</sup> | Index     |           | Percent change         |                        |                         |                         |                        |
|--|-------------------|--|-----------|-----------|------------------------|------------------------|-------------------------|-------------------------|------------------------|
|  |                   |  | Oct. 2012 | Nov. 2012 | Annual                 | Monthly                |                         |                         |                        |
|  |                   |  |           |           | Nov. 2011 to Nov. 2012 | July 2012 to Aug. 2012 | Aug. 2012 to Sept. 2012 | Sept. 2012 to Oct. 2012 | Oct. 2012 to Nov. 2012 |
| Articles of apparel and clothing accessories, not knitted or crocheted.....                | 62                | 1.906                                      | 117.3     | 117.3     | 0.3                    | -0.3                   | 0.0                     | -0.1                    | 0.0                    |
| Made-up or worn textile articles.....  | 63                | 0.628                                      | 108.5     | 108.6     | -3.7                   | 0.0                    | 0.1                     | 0.0                     | 0.1                    |
| <b>Headgear, umbrellas, artificial flowers, etc..</b> ...                                  | XII               | 1.346                                      | 120.1     | 120.1     | 3.2                    | 0.6                    | -0.1                    | 0.0                     | 0.0                    |
| Footwear and parts of such articles.....   | 64                | 1.150                                      | 119.7     | 119.7     | 3.8                    | 0.8                    | 0.0                     | 0.1                     | 0.0                    |
| <b>Stone, plaster, cement, asbestos, ceramics, glass etc.....</b>                          | XIII              | 0.754                                      | 132.0     | 131.8     | 0.8                    | -0.2                   | 0.2                     | -0.2                    | -0.2                   |
| Articles of stone, plaster, cement, asbestos, or mica (Dec. 2001=100).....                 | 68                | 0.241                                      | 124.8     | 125.3     | 1.0                    | -0.2                   | 0.6                     | -1.0                    | 0.4                    |
| Ceramic products.....  | 69                | 0.226                                      | 142.2     | 140.8     | -0.2                   | 0.0                    | 0.0                     | 0.1                     | -1.0                   |
| Glass and glassware.....   | 70                | 0.286                                      | 127.2     | 127.4     | 1.7                    | -0.2                   | 0.1                     | 0.2                     | 0.2                    |
| <b>Pearls, stones, precious metals, imitation jewelry, and coins.....</b>                  | XIV               | 3.385                                      | 208.6     | 207.0     | 2.6                    | -1.6                   | 2.0                     | 4.6                     | -0.8                   |
| <b>Base metals and articles of base metals.....</b>  | XV                | 4.766                                      | 185.6     | 184.7     | -2.8                   | -0.5                   | -0.6                    | 0.9                     | -0.5                   |
| Iron and steel.....  | 72                | 1.020                                      | 220.5     | 220.2     | -11.1                  | -2.0                   | -1.7                    | -3.0                    | -0.1                   |
| Articles of iron or steel.....   | 73                | 1.400                                      | 159.8     | 158.8     | -1.7                   | -0.3                   | -0.4                    | -0.1                    | -0.6                   |
| Copper and articles thereof.....   | 74                | 0.466                                      | 365.0     | 359.1     | 6.1                    | 1.5                    | 0.9                     | 6.5                     | -1.6                   |
| Nickel and articles thereof (Dec. 2009=100)...   | 75                | 0.131                                      | 101.6     | 104.1     | -4.7                   | -1.2                   | -2.5                    | 6.9                     | 2.5                    |
| Aluminum and articles thereof.....   | 76                | 0.699                                      | 138.2     | 136.8     | -4.7                   | -0.7                   | -0.9                    | 4.1                     | -1.0                   |
| Tools, implements, cutlery, spoons and forks, of base metal; parts thereof.....            | 82                | 0.361                                      | 127.9     | 128.1     | 3.6                    | 0.0                    | 0.2                     | -0.5                    | 0.2                    |
| Miscellaneous articles of base metal.....  | 83                | 0.412                                      | 136.4     | 136.3     | 3.4                    | 0.3                    | 0.7                     | -0.3                    | -0.1                   |
| <b>Machinery, electrical equipment, TV image and sound recorders, parts, etc.....</b>      | XVI               | 24.729                                     | 85.9      | 85.7      | 0.0                    | 0.0                    | 0.2                     | 0.0                     | -0.2                   |
| Machinery and mechanical appliances; parts thereof.....                                    | 84                | 12.487                                     | 90.1      | 89.8      | 1.1                    | -0.1                   | 0.4                     | 0.0                     | -0.3                   |
| Electrical machinery and equip, sound and TV recorders & reproducers, parts.....           | 85                | 12.242                                     | 81.9      | 81.7      | -1.1                   | 0.0                    | 0.0                     | 0.1                     | -0.2                   |
| <b>Vehicles, aircraft, vessels and associated transport equipment.....</b>                 | XVII              | 10.278                                     | 116.6     | 116.8     | 1.9                    | 0.0                    | 0.1                     | 0.3                     | 0.2                    |
| Motor vehicles and their parts.....  | 87                | 9.475                                      | 115.7     | 115.6     | 1.6                    | 0.0                    | 0.1                     | 0.4                     | -0.1                   |
| Aircraft, spacecraft, and parts thereof (Dec. 2002=100).....                               | 88                | 0.705                                      | 118.4     | 118.4     | 2.2                    | 0.1                    | -0.4                    | 0.1                     | 0.0                    |
| <b>Optical, photo, measuring, medical &amp; musical instruments; &amp; timepieces.....</b> | XVIII             | 3.207                                      | 104.4     | 104.5     | -0.9                   | -0.6                   | 0.1                     | 0.4                     | 0.1                    |
| Optical, photographic, measuring and medical instruments.....                              | 90                | 2.950                                      | 101.8     | 101.8     | -1.3                   | -0.6                   | 0.1                     | 0.3                     | 0.0                    |
| Clocks and watches and parts thereof.....  | 91                | 0.197                                      | 131.7     | 132.4     | 3.6                    | -0.1                   | 0.2                     | 1.2                     | 0.5                    |
| <b>Miscellaneous manufactured articles.....</b>  | XX                | 3.689                                      | 112.6     | 112.7     | 1.0                    | 0.0                    | -0.2                    | 0.2                     | 0.1                    |
| Furniture & stuffed furnishings; lamps & lighting fittings, nesoi; prefab bldgs.....       | 94                | 1.969                                      | 116.6     | 116.6     | 1.1                    | 0.0                    | 0.1                     | 0.1                     | 0.0                    |
| Toys, games and sports equipment; parts and accessories thereof.....                       | 95                | 1.517                                      | 105.0     | 105.1     | 0.6                    | 0.0                    | -0.5                    | 0.5                     | 0.1                    |
| Miscellaneous manufactured articles.....   | 96                | 0.202                                      | 135.9     | 135.9     | 2.0                    | 0.1                    | -0.8                    | 0.1                     | 0.0                    |

<sup>1</sup> Relative importance figures are based on 2010 trade values.

NOTES: Data may be revised in each of the three months after original publication.

Dash = Not available

**Table 6. U.S. export price indexes and percent changes for selected categories of goods: November 2011 to November 2012**

[2000=100, unless otherwise noted]

| Description  | Harmoni-<br>zied<br>system | Relative<br>importance<br>Oct.<br>2012 <sup>1</sup> | Index        |              | Percent change                  |                              |                                  |                               |                              |
|--|----------------------------|---|--------------|--------------|---------------------------------|------------------------------|----------------------------------|-------------------------------|------------------------------|
|  |                            |   | Oct.<br>2012 | Nov.<br>2012 | Annual                          | Monthly                      |                                  |                               |                              |
|  |                            |   |              |              | Nov.<br>2011 to<br>Nov.<br>2012 | July 2012<br>to Aug.<br>2012 | Aug.<br>2012 to<br>Sept.<br>2012 | Sept.<br>2012 to<br>Oct. 2012 | Oct. 2012<br>to Nov.<br>2012 |
| <b>Live animals; animal products.....</b>  | I                          | 1.977   | 213.0        | 212.5        | 2.2                             | 5.2                          | -1.8                             | 2.7                           | -0.2                         |
| Meat & edible meat offal (Dec. 2006=100). . .  | 02                         | 1.145   | 169.2        | 169.0        | -1.2                            | 1.2                          | 0.8                              | 1.6                           | -0.1                         |
| Fish and crustaceans, molluscs and other<br>aquatic invertebrates.....                   | 03                         | 0.435   | 212.6        | 207.4        | 5.3                             | 1.9                          | -0.1                             | 0.9                           | -2.4                         |
| <b>Vegetable products.....</b>   | II                         | 6.467   | 276.9        | 278.6        | 17.1                            | 5.3                          | 1.7                              | -3.7                          | 0.6                          |
| Edible fruit and nuts; peel of citrus fruit or<br>melons.....                            | 08                         | 0.891   | 143.9        | 150.3        | 15.6                            | -1.9                         | 3.5                              | 4.1                           | 4.4                          |
| Cereals.....   | 10                         | 2.541   | 332.5        | 334.6        | 14.7                            | 9.4                          | -1.1                             | -1.0                          | 0.6                          |
| Oilseeds and misc. grains, seeds, fruits,<br>plants, straw and fodder.....               | 12                         | 2.438   | 304.5        | 302.7        | 26.6                            | 5.4                          | 4.4                              | -9.2                          | -0.6                         |
| <b>Animal or vegetable fats and oils (Dec.<br/>2009=100).....</b>                        | III                        | 0.454   | 143.4        | 133.8        | -9.7                            | -0.3                         | 1.7                              | -2.6                          | -6.7                         |
| <b>Prepared foodstuffs, beverages, and<br/>tobacco.....</b>                              | IV                         | 2.872   | 167.4        | 168.0        | 11.6                            | 3.0                          | 1.6                              | 0.4                           | 0.4                          |
| Preparations of vegetables, fruit, nuts or other<br>parts of plants (Dec. 2009=100)..... | 20                         | 0.319   | 110.9        | 110.9        | 0.6                             | 0.7                          | 0.3                              | -1.4                          | 0.0                          |
| Beverages, spirits, and vinegar (Dec.<br>2008=100).....                                  | 22                         | 0.400   | 110.7        | 110.7        | 5.3                             | 0.0                          | 0.1                              | 0.7                           | 0.0                          |
| Residues and waste from the food industries;<br>prepared animal feed.....                | 23                         | 0.978   | 285.0        | 287.0        | 36.1                            | 8.2                          | 5.0                              | 1.2                           | 0.7                          |
| <b>Mineral products.....</b>   | V                          | 8.575   | 316.9        | 298.9        | -8.6                            | 4.4                          | 3.9                              | -0.9                          | -5.7                         |
| Mineral fuels, oils and residuals, bituminous<br>substances and mineral waxes.....       | 27                         | 7.982   | 313.9        | 294.7        | -9.0                            | 4.8                          | 4.2                              | -1.1                          | -6.1                         |
| <b>Products of the chemical or allied<br/>industries.....</b>                            | VI                         | 12.163  | 155.1        | 154.9        | 0.2                             | 0.5                          | 0.5                              | 0.2                           | -0.1                         |
| Inorganic chemicals.....   | 28                         | 0.991   | 184.2        | 185.9        | -5.0                            | 0.0                          | 0.6                              | -0.9                          | 0.9                          |
| Organic chemicals.....   | 29                         | 3.401   | 166.6        | 166.5        | 0.7                             | 1.7                          | 1.0                              | 0.4                           | -0.1                         |
| Pharmaceutical products.....   | 30                         | 3.147   | 125.1        | 124.9        | 0.6                             | 0.2                          | 0.4                              | 0.4                           | -0.2                         |
| Essential oils and resinoids; perfumery<br>cosmetic or toilet preparations.....          | 33                         | 0.757   | 136.3        | 136.5        | 2.5                             | 0.1                          | -0.2                             | -0.4                          | 0.1                          |
| Soap; lubricants; waxes, polishing or scouring<br>products; candles, pastes.....         | 34                         | 0.463   | 123.0        | 123.0        | -1.4                            | -0.1                         | 0.0                              | 0.0                           | 0.0                          |
| Miscellaneous chemical products.....   | 38                         | 1.759   | 153.6        | 152.6        | 1.5                             | 0.0                          | 0.3                              | -0.1                          | -0.7                         |
| <b>Plastics and articles thereof; rubber and<br/>articles thereof.....</b>               | VII                        | 5.452   | 149.6        | 148.7        | 0.9                             | 0.8                          | 2.0                              | -0.1                          | -0.6                         |
| Plastics and articles thereof.....   | 39                         | 4.400   | 141.2        | 140.2        | 1.7                             | 1.0                          | 2.5                              | 0.1                           | -0.7                         |
| Rubber and articles thereof.....   | 40                         | 1.052   | 188.8        | 188.6        | -2.4                            | -0.1                         | -0.3                             | -0.3                          | -0.1                         |
| <b>Raw hides, skins, leather, furskins, travel<br/>goods, etc.....</b>                   | VIII                       | 0.374   | 133.0        | 135.0        | 9.0                             | 1.6                          | -0.2                             | 0.8                           | 1.5                          |
| <b>Wood, wood charcoal, cork, straw,<br/>basketware and wickerwork.....</b>              | IX                         | 0.539   | 110.0        | 110.0        | 0.5                             | 0.0                          | 0.3                              | -0.3                          | 0.0                          |
| <b>Woodpulp, recovered paper, and paper<br/>products.....</b>                            | X                          | 2.261   | 115.9        | 116.9        | -2.5                            | -1.5                         | -0.9                             | 1.0                           | 0.9                          |
| Woodpulp and recovered paper.....  | 47                         | 0.578   | 114.5        | 118.0        | -9.7                            | -6.4                         | -3.7                             | 2.0                           | 3.1                          |
| Paper and paperboard; articles of paper pulp,<br>paper or paperboard.....                | 48                         | 1.221   | 117.4        | 117.4        | -0.6                            | 0.3                          | 0.1                              | 0.2                           | 0.0                          |
| Printed material.....  | 49                         | 0.462   | 123.8        | 123.8        | 3.8                             | 0.0                          | 0.2                              | 2.1                           | 0.0                          |
| <b>Textile and textile articles.....</b>   | XI                         | 1.880   | 125.3        | 124.9        | -7.4                            | 0.8                          | 0.6                              | -0.8                          | -0.3                         |
| Cotton, including yarns and woven fabrics<br>thereof.....                                | 52                         | 0.541   | 130.6        | 129.7        | -27.4                           | 2.8                          | 1.1                              | -2.8                          | -0.7                         |
| <b>Stone, plaster, cement, asbestos, ceramics,<br/>glass etc.....</b>                    | XIII                       | 0.741   | 118.4        | 118.5        | 1.5                             | 0.0                          | 0.0                              | 0.5                           | 0.1                          |
| Glass and glassware.....   | 70                         | 0.399   | 98.9         | 98.9         | -0.4                            | 0.1                          | 0.0                              | 0.4                           | 0.0                          |

See footnotes at end of table.

**Table 6. U.S. export price indexes and percent changes for selected categories of goods: November 2011 to November 2012 — Continued**  
 [2000=100, unless otherwise noted]

| Description  | Harmonized system | Relative importance Oct. 2012 <sup>1</sup> | Index     |           | Percent change         |                        |                         |                         |                        |
|--|-------------------|--|-----------|-----------|------------------------|------------------------|-------------------------|-------------------------|------------------------|
|  |                   |  | Oct. 2012 | Nov. 2012 | Annual                 | Monthly                |                         |                         |                        |
|  |                   |  |           |           | Nov. 2011 to Nov. 2012 | July 2012 to Aug. 2012 | Aug. 2012 to Sept. 2012 | Sept. 2012 to Oct. 2012 | Oct. 2012 to Nov. 2012 |
| <b>Pearls, stones, precious metals, imitation jewelry, and coins.....</b>                  | XIV               | 5.411                                      | 289.9     | 285.7     | -1.9                   | -1.2                   | 3.1                     | 3.5                     | -1.4                   |
| <b>Base metals and articles of base metals.....</b>  | XV                | 5.397                                      | 171.5     | 171.3     | -1.7                   | -0.1                   | -0.5                    | 0.4                     | -0.1                   |
| Iron and steel.....  | 72                | 1.531                                      | 195.5     | 199.5     | -6.3                   | 0.6                    | -2.5                    | -1.7                    | 2.0                    |
| Articles of iron or steel.....   | 73                | 1.350                                      | 173.1     | 172.7     | 0.1                    | -0.2                   | 0.0                     | 0.0                     | -0.2                   |
| Copper and articles thereof.....   | 74                | 0.667                                      | 258.4     | 247.3     | -0.1                   | -1.5                   | 2.0                     | 4.5                     | -4.3                   |
| Aluminum and articles thereof.....   | 76                | 0.824                                      | 127.1     | 125.6     | -2.3                   | -0.2                   | 0.6                     | 2.3                     | -1.2                   |
| Tools, implements, cutlery, spoons and forks, of base metal; parts thereof.....            | 82                | 0.385                                      | 133.1     | 133.1     | 3.7                    | 0.1                    | 0.0                     | 1.1                     | 0.0                    |
| Miscellaneous articles of base metal.....  | 83                | 0.336                                      | 146.0     | 146.0     | 7.6                    | 0.1                    | 0.0                     | 0.0                     | 0.0                    |
| <b>Machinery, electrical equipment, TV image and sound recorders, parts, etc.....</b>      | XVI               | 27.331                                     | 96.8      | 97.0      | 0.7                    | -0.2                   | 0.0                     | 0.0                     | 0.2                    |
| Machinery and mechanical appliances; parts thereof.....                                    | 84                | 15.925                                     | 110.5     | 110.9     | 2.1                    | 0.0                    | 0.0                     | 0.0                     | 0.4                    |
| Electrical machinery and equipment and parts and accessories thereof.....                  | 85                | 11.406                                     | 82.1      | 82.0      | -1.1                   | -0.2                   | -0.1                    | 0.1                     | -0.1                   |
| <b>Vehicles, aircraft, vessels and associated transport equipment.....</b>                 | XVII              | 10.850                                     | 126.4     | 126.4     | 1.6                    | -0.2                   | -0.1                    | -0.2                    | 0.0                    |
| Motor vehicles and their parts.....  | 87                | 7.156                                      | 112.5     | 112.5     | 1.2                    | -0.3                   | -0.2                    | -0.2                    | 0.0                    |
| <b>Optical, photo, measuring, medical &amp; musical instruments; &amp; timepieces.....</b> | XVIII             | 5.769                                      | 106.3     | 106.3     | 0.8                    | 0.0                    | 0.2                     | 0.1                     | 0.0                    |
| <b>Miscellaneous manufactured articles.....</b>  | XX                | 1.341                                      | 110.7     | 110.7     | 2.0                    | -0.1                   | 0.0                     | 0.4                     | 0.0                    |
| Furniture; stuffed furnishings; lamps and lighting fittings nesoi;.....                    | 94                | 0.695                                      | 120.8     | 120.9     | 1.4                    | -0.1                   | 0.1                     | 0.7                     | 0.1                    |
| Toys, games and sports equipment; parts and accessories thereof.....                       | 95                | 0.514                                      | 90.9      | 90.9      | 1.0                    | -0.3                   | 0.0                     | 0.0                     | 0.0                    |

1 Relative importance figures are based on 2010 trade values.

NOTES: Data may be revised in each of the three months after original publication.

Dash = Not available

**Table 7. U.S. import price indexes and percent changes by locality of origin: November 2011 to November 2012**  
[2000=100, unless otherwise noted]

| Description   | Relative importance Oct. 2012 <sup>1</sup> | Index     |           | Percent change         |                        |                         |                         |                        |
|---|--|-----------|-----------|------------------------|------------------------|-------------------------|-------------------------|------------------------|
|   |  | Oct. 2012 | Nov. 2012 | Annual                 | Monthly                |                         |                         |                        |
|   |  |           |           | Nov. 2011 to Nov. 2012 | July 2012 to Aug. 2012 | Aug. 2012 to Sept. 2012 | Sept. 2012 to Oct. 2012 | Oct. 2012 to Nov. 2012 |
| <b>Industrialized Countries<sup>2</sup></b> .....       | 100.000                                    | 132.2     | 132.2     | -0.8                   | 0.3                    | 1.2                     | 0.7                     | 0.0                    |
| Nonmanufactured articles.....                           | 12.858                                     | 233.3     | 233.3     | -5.3                   | 5.9                    | 6.8                     | 4.0                     | 0.0                    |
| Manufactured articles.....                              | 86.549                                     | 124.0     | 123.9     | -0.1                   | -0.5                   | 0.5                     | 0.2                     | -0.1                   |
| <b>Other Countries<sup>3</sup></b> .....                | 100.000                                    | 140.4     | 138.7     | -2.3                   | 1.5                    | 0.7                     | -0.2                    | -1.2                   |
| Nonmanufactured articles.....                           | 25.376                                     | 354.4     | 343.4     | -5.7                   | 5.5                    | 3.5                     | -0.4                    | -3.1                   |
| Manufactured articles.....                              | 74.268                                     | 111.1     | 110.5     | -1.2                   | 0.1                    | -0.3                    | -0.1                    | -0.5                   |
| <b>Canada</b> .....                                     | 100.000                                    | 152.3     | 152.5     | -1.6                   | 1.7                    | 2.2                     | 1.1                     | 0.1                    |
| Nonmanufactured articles.....                           | 29.699                                     | 219.1     | 219.7     | -6.8                   | 5.1                    | 6.9                     | 4.2                     | 0.3                    |
| Manufactured articles.....                              | 69.363                                     | 138.7     | 138.8     | 1.0                    | 0.4                    | 0.6                     | -0.1                    | 0.1                    |
| <b>European Union<sup>4</sup></b> .....                 | 100.000                                    | 135.1     | 135.1     | -1.3                   | -0.1                   | -0.1                    | 0.6                     | 0.0                    |
| Nonmanufactured articles.....                           | 2.352                                      | 380.2     | 371.3     | -0.1                   | 11.2                   | 0.1                     | 0.7                     | -2.3                   |
| Manufactured articles.....                              | 96.840                                     | 131.4     | 131.4     | -1.4                   | -0.4                   | -0.2                    | 0.7                     | 0.0                    |
| <b>France (Dec. 2003=100)</b> .....                     | 100.000                                    | 119.8     | 120.0     | -0.5                   | -0.3                   | 0.1                     | -0.1                    | 0.2                    |
| <b>Germany (Dec. 2003=100)</b> .....                    | 100.000                                    | 114.7     | 115.1     | -0.3                   | -0.4                   | 0.3                     | 0.3                     | 0.3                    |
| <b>United Kingdom (Dec. 2003=100)</b> .....             | 100.000                                    | 135.0     | 134.3     | 1.1                    | 1.5                    | 0.4                     | 0.4                     | -0.5                   |
| <b>Latin America<sup>5</sup></b> .....                  | 100.000                                    | 177.6     | 174.5     | -3.8                   | 1.9                    | 1.2                     | -0.4                    | -1.7                   |
| Nonmanufactured articles.....                           | 35.113                                     | 377.7     | 365.0     | -8.2                   | 5.4                    | 3.1                     | -1.5                    | -3.4                   |
| Manufactured articles.....                              | 64.422                                     | 133.9     | 132.8     | -1.3                   | 0.2                    | 0.3                     | 0.1                     | -0.8                   |
| <b>Mexico (Dec. 2003=100)</b> .....                     | 100.000                                    | 145.4     | 143.5     | -3.0                   | 1.0                    | 0.8                     | -0.2                    | -1.3                   |
| Nonmanufactured articles (Dec. 2008=100).....           | 21.621                                     | 205.4     | 198.1     | -6.9                   | 6.5                    | 3.7                     | -0.8                    | -3.6                   |
| Manufactured articles (Dec. 2008=100)....               | 78.379                                     | 94.6      | 93.9      | -2.0                   | -0.3                   | 0.0                     | 0.0                     | -0.7                   |
| <b>Pacific Rim (Dec. 2003=100)<sup>6</sup></b> .....    | 100.000                                    | 104.4     | 104.2     | -0.5                   | -0.1                   | -0.1                    | 0.1                     | -0.2                   |
| <b>China (Dec. 2003=100)</b> .....                      | 100.000                                    | 104.5     | 104.4     | -0.7                   | 0.0                    | -0.2                    | -0.2                    | -0.1                   |
| <b>Japan</b> .....                                      | 100.000                                    | 103.1     | 103.1     | 1.2                    | 0.1                    | 0.2                     | 0.2                     | 0.0                    |
| <b>Asian NICs<sup>7</sup></b> .....                     | 100.000                                    | 91.2      | 90.5      | -0.3                   | 0.0                    | 0.2                     | 0.2                     | -0.8                   |
| <b>ASEAN (Dec. 2003=100)<sup>8</sup></b> .....          | 100.000                                    | 104.6     | 104.0     | -1.0                   | -0.3                   | 0.1                     | 0.0                     | -0.6                   |
| <b>Asia Near East (Dec. 2003=100)<sup>9</sup></b> ..... | 100.000                                    | 274.3     | 268.9     | -2.6                   | 3.2                    | 2.5                     | 1.1                     | -2.0                   |

1 Relative figures are based on 2010 trade values.

2 Includes Western Europe, Canada, Japan, Australia, New Zealand and South Africa.

3 Includes Eastern Europe, Latin America, OPEC countries, and other countries in Asia, Africa and the Western Hemisphere.

4 Includes European Union countries.

5 Includes Mexico, Central America, South America and the Caribbean.

6 Includes China, Japan, Australia, Brunei, Indonesia, Macao, Malaysia, New Zealand, Papua New Guinea, Philippines and Asian Newly Industrialized Countries.

7 Asian Newly Industrialized Countries. Includes Hong Kong, Singapore, South Korea and Taiwan.

8 Association of Southeast Asian Nations. Includes Brunei, Cambodia, Indonesia, Laos, Malaysia, Myanmar, Philippines, Singapore, Thailand and Vietnam.

9 Includes Bahrain, Iran, Iraq, Israel, Jordan, Kuwait, Lebanon, Oman, Qatar, Saudi Arabia, Syria, United Arab Emirates and Yemen.

NOTES: Data may be revised in each of the three months after original publication.

Regions are not mutually exclusive.

Dash = Not available

**Table 8. U.S. international price indexes and percent changes for selected transportation services: November 2011 to November 2012**

[2000=100, unless otherwise noted]

| Description                             | Relative importance Oct. 2012 <sup>1</sup> | Index     |           | Percent change         |                        |                         |                         |                        |
|---|--|-----------|-----------|------------------------|------------------------|-------------------------|-------------------------|------------------------|
|   |  | Oct. 2012 | Nov. 2012 | Annual                 | Monthly                |                         |                         |                        |
|   |  |           |           | Nov. 2011 to Nov. 2012 | July 2012 to Aug. 2012 | Aug. 2012 to Sept. 2012 | Sept. 2012 to Oct. 2012 | Oct. 2012 to Nov. 2012 |
| <b>Air Freight</b>                      |  |           |           |                        |                        |                         |                         |                        |
| <b>Import Air Freight</b> .....         | 100.000                                    | 176.2     | 177.0     | -0.5                   | -1.6                   | 0.3                     | 1.3                     | 0.5                    |
| Europe (Dec. 2003=100).....             | 24.217                                     | 164.4     | 166.5     | -1.4                   | -0.9                   | 1.0                     | 4.2                     | 1.3                    |
| Asia.....                               | 71.296                                     | 156.5     | 156.8     | -0.2                   | -2.0                   | 0.1                     | 0.5                     | 0.2                    |
| <b>Export Air Freight</b> .....         | 100.000                                    | 148.5     | 148.1     | 2.8                    | -1.0                   | 2.4                     | 1.2                     | -0.3                   |
| Europe (Dec. 2006=100).....             | 35.200                                     | 130.5     | 130.0     | -0.3                   | -1.0                   | 1.7                     | -1.3                    | -0.4                   |
| <b>Inbound Air Freight</b> .....        | 100.000                                    | 165.3     | 168.0     | 3.6                    | -0.3                   | 1.4                     | 1.3                     | 1.6                    |
| Europe (Dec. 2003=100).....             | 24.481                                     | 150.3     | 151.4     | 1.3                    | -1.0                   | 1.4                     | 3.5                     | 0.7                    |
| Asia.....                               | 64.434                                     | 150.6     | 154.0     | 4.8                    | -0.1                   | 1.4                     | 0.6                     | 2.3                    |
| <b>Outbound Air Freight</b> .....       | 100.000                                    | 147.5     | 149.2     | 3.9                    | 0.0                    | 1.4                     | 0.5                     | 1.2                    |
| Europe (Dec. 2003=100).....             | 30.235                                     | 162.2     | 162.7     | -0.4                   | 0.1                    | 0.7                     | -1.3                    | 0.3                    |
| Asia.....                               | 49.672                                     | 140.1     | 143.1     | 7.0                    | -0.1                   | 1.8                     | 1.0                     | 2.1                    |
| <b>Air Passenger Fares</b>              |  |           |           |                        |                        |                         |                         |                        |
| <b>Import Air Passenger Fares</b> ..... | 100.000                                    | 183.4     | 181.8     | 2.9                    | -5.5                   | -1.6                    | 2.0                     | -0.9                   |
| Europe.....                             | 40.661                                     | 198.2     | 202.9     | 12.7                   | -8.0                   | 0.6                     | 3.7                     | 2.4                    |
| Asia.....                               | 26.052                                     | 152.1     | 147.5     | -5.0                   | -3.5                   | -5.4                    | -0.3                    | -3.0                   |
| Latin America/Caribbean.....            | 10.839                                     | 159.2     | 169.2     | -2.3                   | -2.0                   | -9.1                    | 1.5                     | 6.3                    |
| <b>Export Air Passenger Fares</b> ..... | 100.000                                    | 185.0     | 185.7     | 0.9                    | 0.8                    | -12.4                   | -1.5                    | 0.4                    |
| Europe.....                             | 26.856                                     | 212.6     | 216.2     | 1.6                    | -5.3                   | -9.8                    | -3.0                    | 1.7                    |
| Asia.....                               | 28.163                                     | 166.9     | 161.5     | -7.3                   | 24.4                   | -25.9                   | -1.9                    | -3.2                   |
| Latin America/Caribbean.....            | 24.164                                     | 216.6     | 226.7     | 18.8                   | -6.6                   | -0.3                    | -2.1                    | 4.7                    |

<sup>1</sup> Relative importance figures are based on 2010 trade values.

NOTES: Data may be revised in each of the three months after original publication.

Dash = Not available

## TECHNICAL NOTE

**Import and Export Merchandise and Services Price Indexes** -- All indexes use a modified Laspeyres formula and are not seasonally adjusted. Price indexes are reweighted annually, with a two-year lag in the weights. Published series use a base year of 2000=100 where possible. More detailed index series and additional information may be obtained at <http://www.bls.gov/mxp>, or by calling (202) 691-7101.

**Merchandise Goods Classification Systems** -- The merchandise price indexes are published using three classification systems. Items are classified by end use according to the Bureau of Economic Analysis Classification System, by industry according to the North American Industry Classification System (NAICS), and by product category according to the Harmonized System (HS). While classification by end use and product category are self-explanatory, some notes are in order for classifying items by industry. In the NAICS imports and exports tables, items are classified by output industry, not input industry. As an example, NAICS import index 326 (plastics and rubber products manufacturing) include outputs such as manufactured plastic rather than inputs such as petroleum. The NAICS classification structure also matches the classification system used by the PPI (Producer Price Index) to produce the NAICS primary products indexes.

**Import Price Indexes** -- Products have been classified by the Harmonized Tariff Schedule of the United States Annotated (TSUSA). Import prices are based on U.S. dollar prices paid by the U.S. importer. The prices are generally either "free on board" (f.o.b.) foreign port or "cost, insurance, and freight" (c.i.f.) U.S. port transaction prices, depending on the practices of the individual industry. The index for crude petroleum is calculated from data collected by the U.S. Department of Energy.

**Export Price Indexes** -- Products have been classified by the Harmonized Schedule B classification system of the U.S. Bureau of the Census. The prices used are generally either "free alongside ship" (f.a.s.) factory or "free on board" (f.o.b.) transaction prices, depending on the practices of the individual industry. Prices used in the grain index, excluding rice, are obtained from the U.S. Department of Agriculture.

**Services Price Indexes** -- Starting in September 2008 the Import Air Passenger Fares Indexes represent changes in the average revenue per passenger received by foreign carriers from U.S. residents and are calculated from data obtained from an airline consulting service. These data include tickets sold by travel agencies and travel websites. Tickets sold directly by the airlines are excluded, as are frequent flyer tickets generally. Starting in January 2008 the Export Air Passenger Fares Indexes represent changes in the average revenue per passenger received by U.S. carriers from foreign residents and are calculated from data collected directly from airlines. These data include frequent flyer tickets and those sold by consolidators. Taxes and fees are included in the Import Air Passenger Fares Index and excluded from the Export Air Passenger Fares Index. The Air Freight Indexes are calculated from data collected directly from airlines. These data exclude mail and passenger baggage. The scope of the service being priced is the movement of freight from airport to airport only, and does not include any ground transportation or port service. The Air Freight Indexes are presented using two definitions: Balance of Payments (which represent transactions between U.S. and foreign residents) and International (which represent transactions inbound to and outbound from the U.S.). Fact sheets specifying detailed information for each services industry are available at <http://www.bls.gov/mxp> under "MXP Publications."

**Import Indexes by Locality of Origin** -- Prices used in these indexes are a subset of the data collected for the Import Price Indexes. Beginning with January 2002, the indexes are defined by locality of origin using a nomenclature based upon the North American Industry Classification System (NAICS). Nonmanufactured goods are defined as NAICS 11 and 21 and manufactured goods are defined as NAICS 31-33.

**Revision Policy** -- To reflect the availability of late reports and corrections by respondents, monthly data may be revised in each of the three months after original publication. After three months, no further data revisions take place. So, for example, data released in the January release will be subject to revision in the releases for February, March, and April.

**Uses of the Data** -- The primary use of the indexes is to deflate trade statistics, notably the foreign trade sector of the National Income and Product Accounts constructed by the Department of Commerce. Other published indexes are useful for general market analysis. For trade in international services, Balance of Payments indexes are used for deflating National Income and Product Accounts, while International indexes are more appropriate for market analysis. Merchandise and services indexes also can be used to study U.S. competitiveness and to compute price elasticities, and the merchandise import indexes by country or region of origin are useful in terms of trade analysis.

**E-Mail Subscription** -- The U.S. Import and Export Price Indexes news release is available through an e-mail subscription service at (<http://www.bls.gov/bls/list.htm>).

**Additional Information** -- More detailed data are available on the Import/Export Price Indexes home page at (<http://www.bls.gov/mxp>). Flat Files and the FTP server are available for users requiring access to either a large volume of time series data or other related documentation. The FTP site can be accessed at <ftp://ftp.bls.gov>. For technical assistance in using the BLS Internet site, send e-mail to ([labstat.helpdesk@bls.gov](mailto:labstat.helpdesk@bls.gov)). For Import/Export Price Index data requests, send e-mail to ([mxpinfo@bls.gov](mailto:mxpinfo@bls.gov)).

Information from this release will be made available to sensory impaired individuals upon request. Voice phone: 202-691-5200; Federal Relay Service: 1-800-877-8339.