

Transmission of material in this release is embargoed until
8:30 a.m. (EST) Tuesday, February 15, 2011

USDL-11-0201

Technical information: (202) 691-7101 • MXPinfo@bls.gov • www.bls.gov/mxp
Media contact: (202) 691-5902 • PressOffice@bls.gov

U.S. IMPORT AND EXPORT PRICE INDEXES – JANUARY 2011

The price index for U.S. imports increased 1.5 percent in January, the U.S. Bureau of Labor Statistics reported today, as higher prices for fuel and nonfuel imports each contributed to the advance. U.S. export prices rose 1.2 percent in January, following increases of 1.5 percent in November and 0.6 percent in December.

Chart 1. One-month percent change in the Import Price Index: January 2010 – January 2011

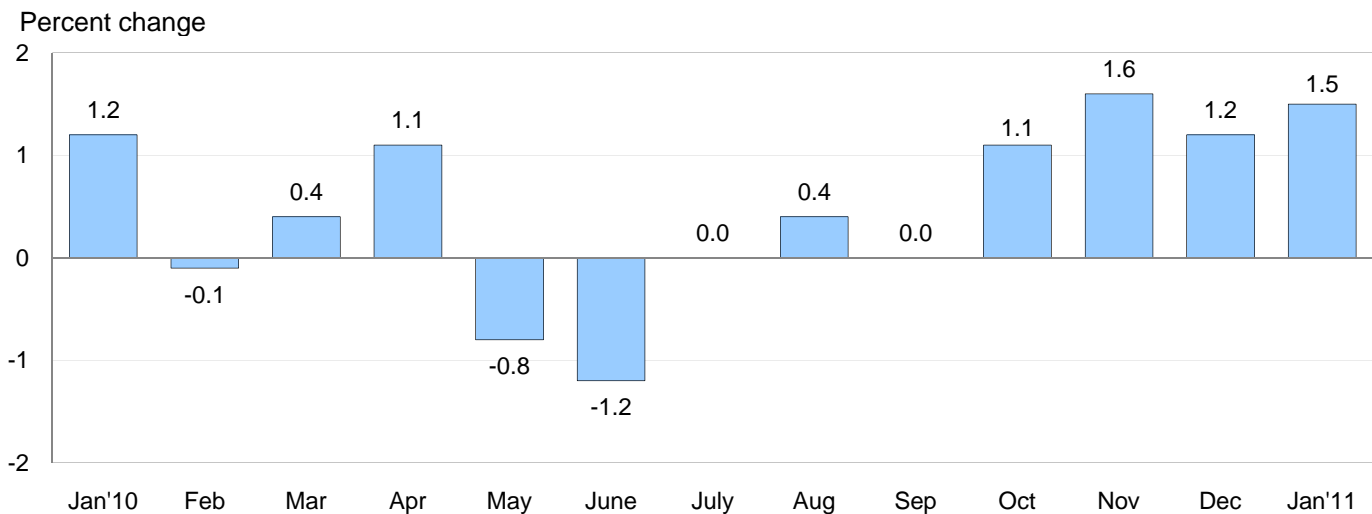
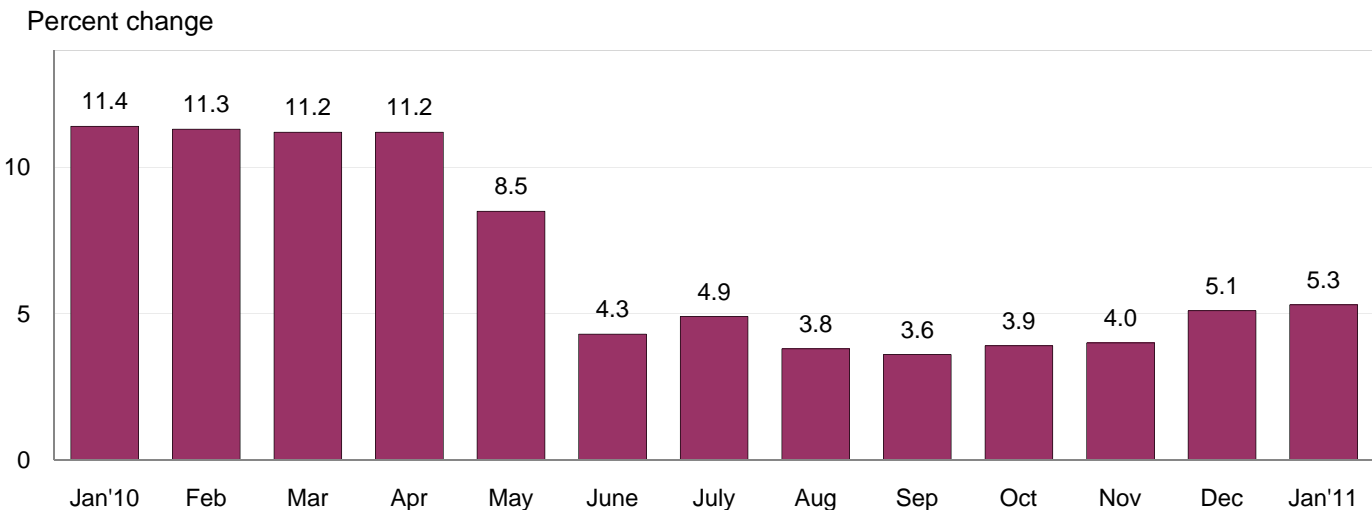


Chart 2. 12-month percent change in the Import Price Index: January 2010 – January 2011



All Imports: Import prices advanced 1.5 percent in January, and for the first time since July 2008 the index advanced at least 1.0 percent for four consecutive months. Import prices increased 5.3 percent over the past year, the largest 12-month advance for the index since an 8.5 percent rise between May 2009 and May 2010. In addition to contributing to the January price increases, higher fuel and nonfuel prices also both contributed to the 12 month advance in overall imports.

Fuel Imports: Fuel prices rose 3.9 percent in January, after rising 14.1 percent over the previous three months. Rising prices for petroleum and natural gas led the overall increase in fuel prices in January. Petroleum prices advanced 3.4 percent in January and prices for natural gas surged 13.0 percent, the largest monthly rise for that index since a 17.7 jump in January 2010. Fuel prices advanced 12.4 percent over the past year, led by a 14.3 percent increase in petroleum prices. Despite the January rise, natural gas prices fell 18.8 percent over the past year.

All Imports Excluding Fuel: The price index for nonfuel imports increased 0.8 percent in January, with higher prices for nonfuel industrial supplies and materials, finished goods, and foods, feeds, and beverages all contributing to the overall advance. The January increase matched a similar 0.8 percent rise in November, the largest one-month advances for the index since a 1.1 percent increase in April 2008. Nonfuel import prices rose 3.4 percent for the year ended in January, led by a 13.0 percent advance in nonfuel industrial supplies and materials prices and a 14.8 percent increase in foods, feeds, and beverages prices.

Table A. Percent changes

Month	IMPORTS			EXPORTS		
	All imports	Fuel imports	Nonfuel imports	All exports	Agricultural exports	Non-agricultural exports
2010						
January.....	1.2	4.4	0.4	0.8	1.3	0.7
February.....	-0.1	-0.7	0.1	-0.3	-4.0	0.1
March.....	0.4	1.4	0.2	0.7	1.9	0.6
April.....	1.1	2.6	0.6	1.1	-0.4	1.3
May.....	-0.8	-5.1	0.4	0.5	1.6	0.3
June.....	-1.2	-3.8	-0.4	-0.7	0.0	-0.8
July.....	0.0	1.0	-0.3	-0.2	-0.2	-0.2
August.....	0.4	1.0	0.3	0.8	4.2	0.5
September.....	0.0	-1.5	0.3	0.6	2.4	0.4
October.....	1.1	4.3	0.3 ^r	0.8	2.8	0.6
November.....	1.6 ^r	4.7 ^r	0.8	1.5	7.6	0.8
December.....	1.2 ^r	4.4 ^r	0.3	0.6 ^r	1.7	0.6
2011						
January.....	1.5	3.9	0.8	1.2	3.2	0.9
Jan. 2009 to 2010.....	11.4	77.8	1.3	3.5	4.4	3.3
Jan. 2010 to 2011.....	5.3	12.4	3.4	6.8	22.6	5.3

^r Revised

Chart 3. One-month percent change in the Export Price Index: January 2010 – January 2011

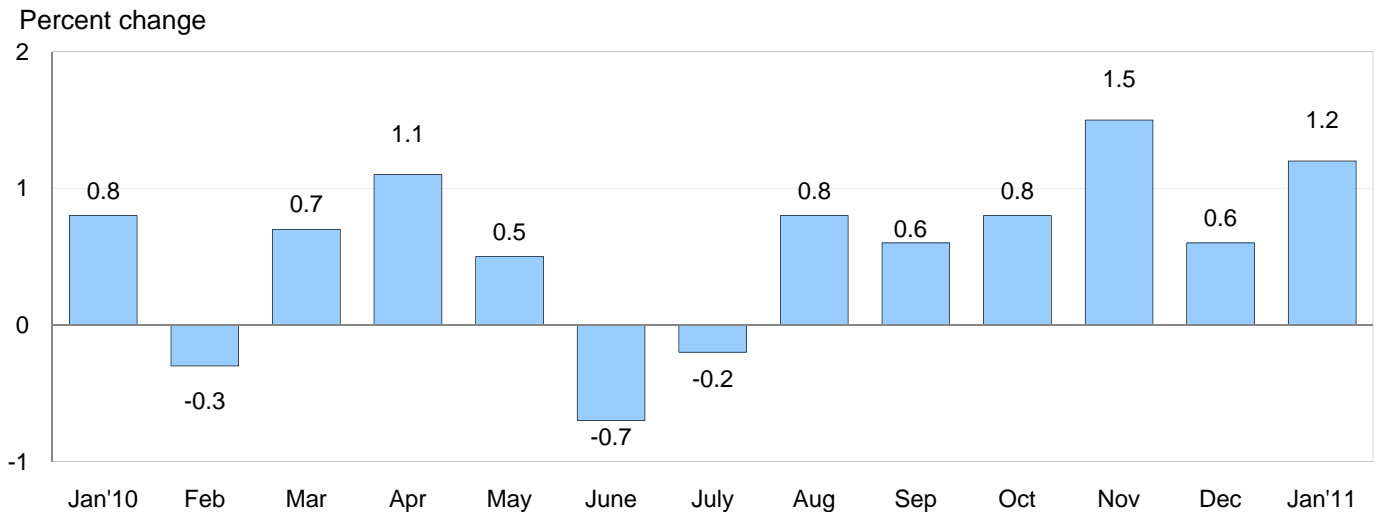
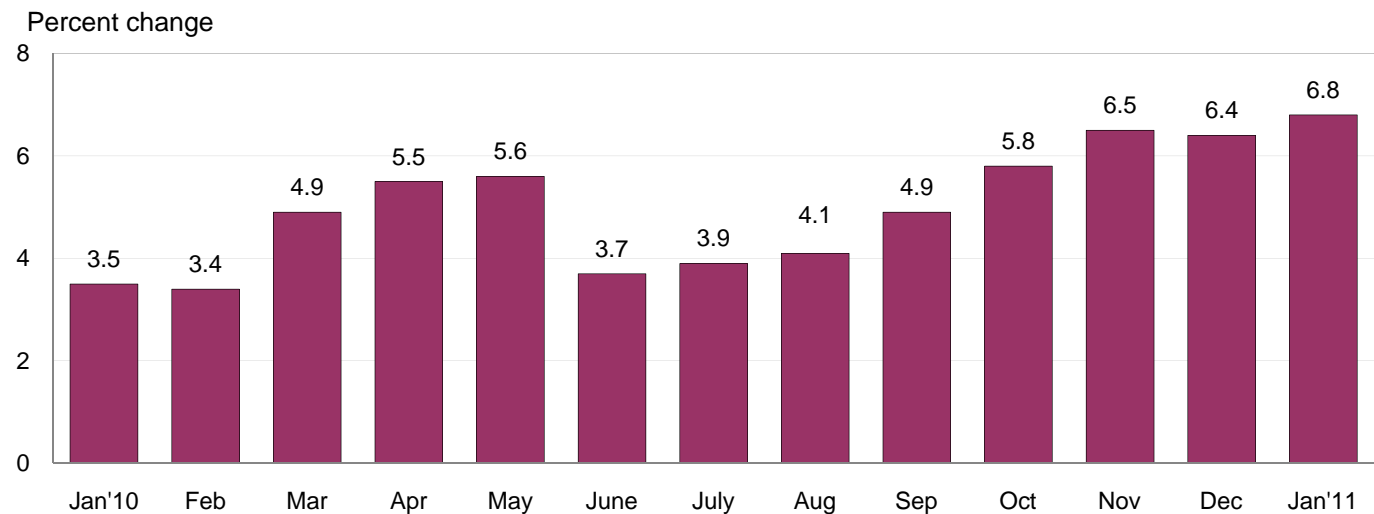


Chart 4. 12-month percent change in the Export Price Index: January 2010 – January 2011



All Exports: Export prices increased 1.2 percent in January, led up by rising prices for both agricultural and nonagricultural export prices. Overall export prices have not recorded a decline since July, and rose 6.8 percent over the past year. The 12-month increase in January was the largest year-over-year advance since a 7.0 percent increase between September 2007 and September 2008.

Agricultural Exports: Agricultural export prices rose 3.2 percent in January, and increased 23.9 percent since July. The January advance was driven by higher prices for soybeans, corn, and wheat, up 5.8 percent, 8.0 percent, and 8.2 percent, respectively. In contrast, cotton prices, which rose 111.8 percent over the past year, fell 0.2 percent in January, the first monthly decline for the index since February 2010. The price index for agricultural exports increased 22.6 percent for the year ended in January.

All Exports Excluding Agriculture: The price index for nonagricultural exports advanced 0.9 percent in January, the largest monthly increase for the index since a 1.3 percent rise in April 2010. Higher prices for nonagricultural industrial supplies and materials, capital goods, and automotive vehicles more than offset a 0.4 percent drop in prices for consumer goods. Nonagricultural prices rose 5.3 percent over the past year, led mostly by a 13.9 percent advance in the price index for nonagricultural industrial supplies and materials.

SELECTED JANUARY HIGHLIGHTS

Import Prices

Nonfuel Industrial Supplies and Materials: Nonfuel industrial supplies and materials prices increased 2.3 percent in January after a 1.1 percent advance the previous month. Following a recent trend, the January increase was led by higher prices for unfinished metals and chemicals, up 3.2 percent and 2.3 percent, respectively. The price index for unfinished metals rose 20.5 percent over the past year, while chemicals prices advanced 13.7 percent for the same period.

Finished Goods: Each of the major finished goods categories increased in January. Consumer goods prices advanced 0.3 percent; the largest contributors to the increase were a 0.9 percent advance in apparel, footwear, and household goods prices and a 4.0 percent jump in jewelry prices. Prices for automotive vehicles rose 0.5 percent, led by a 1.2 percent increase in parts prices. The price index for capital goods ticked up 0.1 percent as a 0.8 percent increase in capital goods prices, excluding computers more than offset 1.4 percent drop in computers, peripherals, and semiconductor prices.

Foods, Feeds, and Beverages: Foods, feeds, and beverages prices advanced 2.6 percent in January following a 1.4 percent increase in December. Higher prices for food oils, fish, coffee, meat, and fruit all contributed to the January rise.

Imports by Locality of Origin: Prices for imports from China rose 0.3 percent for the fourth consecutive month in January, driving the index up 1.4 percent over the past year. The advance between January 2010 and January 2011 was the largest 12-month increase since a 1.5 percent rise in import prices from China in January 2009. The price index for imports from Japan rose 0.4 percent in January, the largest monthly increase since a 0.7 percent advance in June 2009. Higher fuel prices contributed to rising prices for imports from Canada, the European Union, and Mexico, up 2.8 percent, 1.0 percent, and 1.2 percent, respectively.

Transportation Services: Import air passenger fares declined 2.6 percent in January, led by lower Asian and Latin American/Caribbean fares. Despite the downturn, import air passenger fares rose 12.2 percent over the past 12 months. The price index for import air freight fell 1.6 percent in January, but advanced 6.7 percent over the past year.

Export Prices

Nonagricultural Industrial Supplies and Materials: The price index for nonagricultural industrial supplies and materials rose 2.3 percent in January after a 1.4 percent increase the previous month. The January advance was led by higher prices for fuel, metals, and chemicals.

Finished Goods: Finished goods prices were mixed in January. Prices for capital goods and automotive vehicles increased 0.2 percent and 0.1 percent, respectively. In contrast, consumer goods prices declined 0.4 percent.

Transportation Services: Export air passenger fares rose 7.9 percent in January, driven by a 12.4 percent increase in Asian fares and a 7.7 percent advance in Latin American/Caribbean fares. The index for overall export fares increased 15.6 percent over the past 12 months. Export air freight prices advanced 3.8 percent in January and 7.9 percent over the past year.

Import and Export Price Index data for February 2011 are scheduled for release on Tuesday, March 15, 2011 at 8:30 a.m. (EDT).

Table 1. U.S. import price indexes and percent changes for selected categories of goods: January 2010 to January 2011

[2000=100, unless otherwise noted]

Description	End Use	Relative importance Dec. 2010 ¹	Index		Percent change				
			Dec. 2010	Jan. 2011	Annual Jan. 2010 to Jan. 2011	Monthly			
						Sept. 2010 to Oct. 2010	Oct. 2010 to Nov. 2010	Nov. 2010 to Dec. 2010	Dec. 2010 to Jan. 2011
All commodities.....		100.000	130.7	132.6	5.3	1.1	1.6	1.2	1.5
All imports excluding food and fuels (Dec. 2010=100).....		57.805	100.0	100.6	–	–	–	–	0.6
All imports excluding petroleum.....		78.239	112.6	113.8	3.2	0.3	0.8	0.4	1.1
All imports excluding fuels (Dec. 2001=100)..		76.747	116.4	117.3	3.4	0.3	0.8	0.3	0.8
Foods, feeds, & beverages.....	0	5.778	162.9	167.1	14.8	2.1	2.6	1.4	2.6
Agricultural foods, feeds & beverages, excluding distilled beverages.....	00	4.492	183.0	187.8	14.6	2.2	3.0	1.6	2.6
Nonagricultural foods (fish, distilled beverages).....	01	1.286	117.6	120.2	15.4	1.8	1.0	1.3	2.2
Industrial supplies & materials.....	1	36.417	221.1	228.4	12.7	3.2	3.8	3.1	3.3
Industrial supplies & materials excluding petroleum.....		14.656	159.3	164.6	10.5	1.5	2.4	1.5	3.3
Industrial supplies & materials excluding fuels (Dec. 2001=100).....		13.164	178.1	182.2	13.0	1.7	2.5	1.1	2.3
Industrial supplies & materials, durable.....		8.040	171.1	174.8	12.6	1.8	2.6	0.8	2.2
Industrial supplies & materials nondurable excluding petroleum.....		5.124	145.5	152.2	7.6	1.0	2.1	2.6	4.6
Fuels & lubricants.....	10	23.254	281.9	292.8	12.4	4.3	4.7	4.4	3.9
Petroleum & petroleum products.....	100	21.762	309.3	319.7	14.3	4.7	5.0	4.3	3.4
Crude.....	10000	16.185	316.0	325.2	14.8	4.8	4.3	4.5	2.9
Fuels, n.e.s.-coals & gas.....	101	1.140	124.9	139.6	-13.9	-2.5	1.2	6.7	11.8
Gas-natural.....	10110	1.016	110.4	124.8	-18.8	-3.5	1.7	9.2	13.0
Paper & paper base stocks.....	11	0.682	117.5	117.9	13.0	-0.5	0.5	0.0	0.3
Materials associated with nondurable supplies & materials.....	12	4.508	157.4	161.8	13.5	1.9	2.5	2.0	2.8
Selected building materials.....	13	1.105	127.0	129.6	5.8	0.6	1.0	0.3	2.0
Unfinished metals related to durable goods.....	14	3.821	265.9	274.5	20.5	2.9	4.5	1.2	3.2
Finished metals related to durable goods. ...	15	1.604	152.4	153.6	8.5	1.6	1.3	0.3	0.8
Nonmetals related to durable goods.....	16	1.444	108.6	110.0	3.8	0.2	0.6	0.1	1.3
Capital goods.....	2	22.368	92.0	92.1	0.2	0.1	0.0	0.1	0.1
Electric generating equipment.....	20	2.782	113.7	114.4	2.4	0.1	0.6	0.2	0.6
Nonelectrical machinery.....	21	17.685	86.2	86.2	0.0	0.2	-0.1	0.0	0.0
Transportation equipment excluding motor vehicles (Dec. 2001=100).....	22	1.900	121.9	121.9	-0.8	0.1	0.1	0.1	0.0
Automotive vehicles, parts & engines.....	3	9.680	109.4	109.9	1.4	0.1	0.2	-0.2	0.5
Consumer goods, excluding automotives..	4	25.757	104.1	104.4	0.0	-0.5	0.4	0.0	0.3
Nondurables, manufactured.....	40	12.661	110.3	110.4	1.8	-0.5	0.5	0.3	0.1
Durables, manufactured.....	41	12.079	98.2	98.6	-1.9	-0.6	0.4	-0.3	0.4
Nonmanufactured consumer goods.....	42	1.017	103.7	105.9	3.7	0.6	0.0	0.1	2.1

¹ Relative importance figures are based on 2009 trade values.

NOTES: Data may be revised in each of the three months after original publication.

Dash = Not available

Table 2. U.S. export price indexes and percent changes for selected categories of goods: January 2010 to January 2011

[2000=100, unless otherwise noted]

Description	End Use	Relative importance Dec. 2010 ¹	Index		Percent change				
			Dec. 2010	Jan. 2011	Annual	Monthly			
					Jan. 2010 to Jan. 2011	Sept. 2010 to Oct. 2010	Oct. 2010 to Nov. 2010	Nov. 2010 to Dec. 2010	Dec. 2010 to Jan. 2011
All commodities		100.000	127.4	128.9	6.8	0.8	1.5	0.6	1.2
Agricultural commodities		11.443	198.2	204.5	22.6	2.8	7.6	1.7	3.2
All exports excluding food and fuels (Dec. 2010=100)		82.057	100.0	100.5	-	-	-	-	0.5
Nonagricultural commodities		88.556	122.4	123.5	5.3	0.6	0.8	0.6	0.9
Foods, feeds, & beverages	0	10.138	190.9	197.7	18.0	2.4	6.0	0.7	3.6
Agricultural foods, feeds & beverages, excluding distilled beverages.....	00	9.454	194.4	201.3	18.0	2.4	6.4	0.5	3.5
Nonagricultural foods (fish, distilled beverages).....	01	0.684	160.9	166.8	18.4	2.3	0.3	5.0	3.7
Industrial supplies & materials	1	33.391	172.4	176.4	15.4	1.7	2.5	1.7	2.3
Industrial supplies & materials, durable.....		12.017	174.8	178.8	12.0	1.5	1.7	1.4	2.3
Industrial supplies & materials, nondurable.....		21.374	172.0	175.9	17.7	1.8	3.1	2.0	2.3
Agricultural industrial supplies & materials..	10	1.989	222.6	225.5	48.3	4.8	13.7	7.8	1.3
Nonagricultural industrial supplies & materials		31.402	170.4	174.4	13.9	1.5	1.9	1.4	2.3
Fuels & lubricants.....	11	7.804	233.2	243.8	21.9	3.1	3.6	2.6	4.5
Nonagricultural supplies & materials excluding fuels & building materials.....	12	22.693	164.3	167.1	12.2	1.2	1.6	1.2	1.7
Selected building materials.....	13	0.905	116.4	116.2	1.2	-0.2	0.3	-0.7	-0.2
Capital goods	2	35.881	103.8	104.0	0.4	-0.1	0.3	0.1	0.2
Electrical generating equipment.....	20	3.425	109.9	110.6	0.6	0.6	0.5	0.0	0.6
Nonelectrical machinery.....	21	25.265	94.3	93.9	-0.6	-0.2	0.2	0.0	-0.4
Transportation equipment excluding motor vehicles (Dec. 2001=100).....	22	7.192	141.1	144.2	4.1	0.3	0.1	0.3	2.2
Automotive vehicles, parts & engines	3	6.932	109.1	109.2	0.6	0.2	0.2	0.0	0.1
Consumer goods, excluding automotives ..	4	13.657	112.9	112.5	2.7	0.6	0.4	0.0	-0.4
Nondurables, manufactured.....	40	7.036	114.1	113.9	2.7	0.4	0.8	-0.2	-0.2
Durables, manufactured.....	41	5.550	111.1	110.6	2.6	1.0	0.1	0.0	-0.5

¹ Relative importance figures are based on 2009 trade values.

NOTES: Data may be revised in each of the three months after original publication.

Dash = Not available

Table 3. U.S. import price indexes and percent changes for selected categories of goods: January 2010 to January 2011

[December 2005=100, unless otherwise noted]

Description	NAICS	Relative importance Dec. 2010 ¹	Index		Percent change				
			Dec. 2010	Jan. 2011	Annual	Monthly			
					Jan. 2010 to Jan. 2011	Sept. 2010 to Oct. 2010	Oct. 2010 to Nov. 2010	Nov. 2010 to Dec. 2010	Dec. 2010 to Jan. 2011
Nonmanufactured articles.....		20.416	140.9	146.1	13.1	4.1	3.9	4.5	3.7
Agriculture, forestry, fishing and hunting...	11	2.126	166.1	173.6	20.9	2.5	2.5	3.0	4.5
Crop production.....	111	1.534	170.8	176.8	16.3	2.6	2.3	2.1	3.5
Mining.....	21	18.290	138.1	143.2	12.3	4.2	4.2	4.6	3.7
Mining (except oil and gas) (Dec. 2006=100).....	212	0.368	140.5	145.2	13.1	-0.1	0.8	0.1	3.3
Manufactured articles.....		79.086	112.3	113.4	3.6	0.5	1.0	0.4	1.0
Manufactured goods, part 1.....	31	10.989	114.2	115.8	7.3	0.9	1.3	0.8	1.4
Food manufacturing.....	311	3.243	142.0	146.4	20.0	2.3	3.0	1.6	3.1
Beverage and tobacco product manufacturing.....	312	0.951	110.2	109.8	0.9	0.5	1.0	0.0	-0.4
Textile product mills.....	314	0.850	106.7	107.8	6.7	0.3	1.0	1.6	1.0
Apparel manufacturing.....	315	4.074	103.1	104.2	3.0	0.5	0.4	0.5	1.1
Leather and allied product manufacturing. . .	316	1.505	108.6	109.0	2.1	0.2	0.1	0.1	0.4
Manufactured goods, part 2.....	32	18.679	127.2	129.8	7.5	0.9	2.5	1.3	2.0
Wood product manufacturing.....	321	0.673	104.8	108.4	10.2	0.6	1.9	0.4	3.4
Paper manufacturing.....	322	1.234	110.6	111.4	9.6	-0.1	0.5	-0.1	0.7
Petroleum and coal products manufacturing.....	324	4.550	139.1	145.0	11.8	4.1	6.8	3.6	4.2
Chemical manufacturing.....	325	9.558	129.6	130.8	5.8	0.0	1.7	0.9	0.9
Plastics and rubber products manufacturing.....	326	1.755	116.5	120.2	5.3	-0.3	0.3	0.3	3.2
Nonmetallic mineral product manufacturing.....	327	0.809	123.4	125.5	4.3	0.7	0.2	0.1	1.7
Manufactured goods, part 3.....	33	49.418	107.4	107.9	1.5	0.3	0.5	0.1	0.5
Primary metal manufacturing.....	331	4.574	173.6	178.4	18.9	2.7	4.0	1.2	2.8
Fabricated metal product manufacturing. . .	332	2.564	121.3	122.1	5.0	0.8	0.4	0.7	0.7
Machinery manufacturing.....	333	5.577	114.8	115.8	2.2	0.6	0.3	0.1	0.9
Computer and electronic product manufacturing.....	334	15.900	85.1	84.5	-4.2	-0.7	-0.2	-0.5	-0.7
Electrical equipment, appliance, and component manufacturing.....	335	3.658	113.7	114.0	0.8	-0.1	0.4	0.4	0.3
Transportation equipment manufacturing. . .	336	10.836	106.4	106.4	0.5	0.2	0.1	-0.1	0.0
Furniture and related product manufacturing.....	337	1.246	107.2	107.2	0.1	0.2	0.1	0.5	0.0
Miscellaneous manufacturing.....	339	5.063	114.3	117.3	4.6	0.3	0.8	0.3	2.6

¹ Relative importance figures are based on 2009 trade values.

NOTES: Data may be revised in each of the three months after original publication.

Dash = Not available

Table 4. U.S. export price indexes and percent changes for selected categories of goods: January 2010 to January 2011

[December 2005=100, unless otherwise noted]

Description	NAICS	Relative importance Dec. 2010 ¹	Index		Percent change				
			Dec. 2010	Jan. 2011	Annual	Monthly			
					Jan. 2010 to Jan. 2011	Sept. 2010 to Oct. 2010	Oct. 2010 to Nov. 2010	Nov. 2010 to Dec. 2010	Dec. 2010 to Jan. 2011
Nonmanufactured articles.....		9.013	165.1	175.3	34.0	2.7	10.1	1.0	6.2
Agriculture, forestry, fishing and hunting...	11	6.667	189.6	199.5	34.9	3.6	13.5	2.8	5.2
Crop production.....	111	6.412	198.0	208.4	36.8	4.0	14.5	2.8	5.3
Mining.....	21	2.346	112.3	122.2	32.1	0.4	2.5	-3.4	8.8
Mining (except oil and gas).....	212	1.547	129.9	131.1	35.7	1.3	1.6	-5.1	0.9
Manufactured articles.....		87.472	115.1	115.7	4.6	0.6	0.9	0.5	0.5
Manufactured goods, part 1.....	31	7.228	135.3	136.7	11.0	1.6	1.8	1.4	1.0
Food manufacturing.....	311	5.017	152.3	152.7	10.8	1.5	2.0	1.7	0.3
Beverage and tobacco product manufacturing.....	312	0.567	114.8	113.9	5.7	2.0	0.3	-0.3	-0.8
Apparel manufacturing.....	315	0.397	105.6	108.3	5.8	0.0	0.0	0.0	2.6
Manufactured goods, part 2.....	32	25.911	124.5	125.7	9.1	1.1	1.6	0.8	1.0
Wood product manufacturing.....	321	0.408	116.5	113.0	2.8	-0.3	4.9	-2.2	-3.0
Paper manufacturing.....	322	2.019	122.7	124.1	9.7	-0.4	0.0	-0.6	1.1
Petroleum and coal products manufacturing.....	324	5.178	139.6	144.0	18.5	4.7	5.1	4.3	3.2
Chemical manufacturing.....	325	15.603	125.4	125.9	8.4	0.7	1.1	0.5	0.4
Plastics and rubber products manufacturing.....	326	1.970	107.5	107.7	0.9	0.2	-0.6	0.0	0.2
Nonmetallic mineral product manufacturing.....	327	0.734	112.5	110.7	-3.5	-0.2	0.0	-0.4	-1.6
Manufactured goods, part 3.....	33	54.333	109.6	110.0	2.2	0.3	0.6	0.3	0.4
Primary metal manufacturing.....	331	4.849	160.3	164.9	18.1	2.5	3.4	1.9	2.9
Fabricated metal product manufacturing.	332	2.485	122.3	123.0	1.7	0.3	0.2	0.3	0.6
Machinery manufacturing.....	333	10.702	115.2	115.5	1.6	0.1	0.3	-0.1	0.3
Computer and electronic product manufacturing.....	334	14.634	91.4	91.0	-1.7	-0.4	0.1	0.2	-0.4
Electrical equipment, appliance, and component manufacturing.....	335	3.139	110.0	110.6	0.9	0.5	0.9	0.2	0.5
Transportation equipment manufacturing....	336	13.273	111.9	113.2	2.4	0.2	0.1	0.2	1.2
Miscellaneous manufacturing.....	339	4.941	112.7	110.7	1.5	1.0	0.0	0.0	-1.8

¹ Relative importance figures are based on 2009 trade values.

NOTES: Data may be revised in each of the three months after original publication.

Dash = Not available

Table 5. U.S. import price indexes and percent changes for selected categories of goods: January 2010 to January 2011

[2000=100, unless otherwise noted]

Description	Harmoni- zied system	Relative importance Dec. 2010 ¹	Index		Percent change				
			Dec. 2010	Jan. 2011	Annual	Monthly			
					Jan. 2010 to Jan. 2011	Sept. 2010 to Oct. 2010	Oct. 2010 to Nov. 2010	Nov. 2010 to Dec. 2010	Dec. 2010 to Jan. 2011
Live animals; animal products.....	I	1.334	155.8	160.2	21.7	1.8	1.3	2.2	2.8
Meat and edible meat offal.....	02	0.303	189.4	195.8	21.0	0.5	-0.1	2.9	3.4
Fish and crustaceans, molluscs and other aquatic invertebrates.....	03	0.725	119.5	122.3	22.9	2.9	1.1	1.6	2.3
Vegetable products.....	II	1.788	190.3	195.8	16.8	2.5	2.1	2.0	2.9
Edible vegetables, roots, and tubers.....	07	0.356	325.1	330.7	8.3	-1.2	-0.8	5.6	1.7
Edible fruit and nuts; peel of citrus fruit or melons.....	08	0.529	114.3	117.7	10.2	3.8	-2.2	0.5	3.0
Coffee, tea, mate and spices.....	09	0.402	218.3	230.6	39.6	-1.0	9.3	0.1	5.6
Animal or vegetable fats and oils (Dec. 2009=100).....	III	0.321	135.4	152.8	49.2	5.0	7.1	7.5	12.9
Prepared foodstuffs, beverages, and tobacco.....	IV	2.651	149.3	150.5	7.0	1.5	2.4	0.3	0.8
Cocoa and cocoa preparations (Dec. 2009=100).....	18	0.226	96.3	98.8	-4.3	-1.0	2.5	0.6	2.6
Preparations of cereals, flour, starch or milk; bakers' wares (Dec. 2007=100).....	19	0.292	132.9	133.2	16.1	2.9	7.7	-3.6	0.2
Preparations of vegetables, fruit, nuts, or other parts of plants.....	20	0.369	147.9	149.9	14.9	6.5	5.5	1.6	1.4
Beverages, spirits, and vinegar.....	22	0.923	120.5	119.9	1.3	0.6	1.3	0.2	-0.5
Mineral products.....	V	22.864	283.0	293.5	11.8	4.0	4.5	4.3	3.7
Mineral fuels, oils and residuals, bituminous substances and mineral waxes.....	27	22.540	279.5	289.9	11.7	4.1	4.6	4.4	3.7
Products of the chemical or allied industries.....	VI	9.192	143.8	145.2	5.8	0.4	1.6	0.9	1.0
Inorganic chemicals.....	28	1.046	327.0	341.6	38.3	7.3	5.2	1.3	4.5
Organic chemicals.....	29	3.022	137.1	136.8	4.0	0.4	0.9	1.3	-0.2
Pharmaceutical products.....	30	3.440	115.5	115.7	-2.0	-3.0	0.5	0.2	0.2
Fertilizers (Dec. 2009=100).....	31	0.245	112.1	120.3	11.9	2.5	5.0	4.2	7.3
Essential oils and resinoids (Dec. 2001=100).....	33	0.448	124.1	122.6	1.5	1.0	3.8	-0.2	-1.2
Miscellaneous chemical products.....	38	0.498	100.5	104.3	14.0	2.4	2.9	1.5	3.8
Plastics and articles thereof; rubber and articles thereof.....	VII	2.947	142.0	145.8	10.7	0.5	0.9	1.4	2.7
Plastics and articles thereof.....	39	1.843	134.1	135.1	6.1	-0.2	0.6	0.8	0.7
Rubber and articles thereof.....	40	1.104	157.0	166.4	18.8	1.5	1.3	2.3	6.0
Raw hides, skins, leather, furskins, travel goods, etc.....	VIII	0.545	115.5	116.4	2.4	0.0	0.1	0.3	0.8
Articles of leather; travel goods, bags, etc. of various materials.....	42	0.498	115.6	116.6	1.7	-0.1	0.2	0.3	0.9
Wood, wood charcoal, cork, straw, basketware and wickerwork.....	IX	0.705	126.3	130.3	9.3	0.6	1.5	0.4	3.2
Woodpulp, recovered paper, and paper products.....	X	1.359	114.3	114.6	7.7	-0.1	0.4	0.0	0.3
Paper and paperboard; articles of paper pulp, paper or paperboard.....	48	0.898	106.8	107.4	5.9	0.5	0.2	0.1	0.6
Textile and textile articles.....	XI	5.196	105.9	107.3	4.3	0.5	0.8	0.8	1.3
Articles of apparel and clothing accessories, knitted or crocheted.....	61	2.047	100.6	101.6	3.5	0.5	0.5	0.4	1.0
Articles of apparel and clothing accessories, not knitted or crocheted.....	62	1.898	104.4	105.6	2.7	0.5	0.4	0.6	1.1
Made-up or worn textile articles.....	63	0.630	100.6	101.8	9.9	0.5	1.7	2.5	1.2
Headgear, umbrellas, artificial flowers, etc..	XII	1.257	108.8	109.1	1.9	0.2	0.2	0.1	0.3

See footnotes at end of table.

Table 5. U.S. import price indexes and percent changes for selected categories of goods: January 2010 to January 2011 — Continued
 [2000=100, unless otherwise noted]

Description	Harmonized system	Relative importance Dec. 2010 ¹	Index		Percent change				
			Dec. 2010	Jan. 2011	Annual	Monthly			
					Jan. 2010 to Jan. 2011	Sept. 2010 to Oct. 2010	Oct. 2010 to Nov. 2010	Nov. 2010 to Dec. 2010	Dec. 2010 to Jan. 2011
Footwear and parts of such articles.....	64	1.073	107.9	108.1	1.9	0.1	0.2	0.0	0.2
Stone, plaster, cement, asbestos, ceramics, glass etc.....	XIII	0.743	126.3	126.5	1.6	1.3	0.2	0.2	0.2
Articles of stone, plaster, cement, asbestos, or mica (Dec. 2001=100).....	68	0.255	119.4	119.2	1.1	0.7	-0.4	0.8	-0.2
Ceramic products.....	69	0.216	138.3	138.3	-1.1	0.0	0.1	0.0	0.0
Glass and glassware.....	70	0.272	120.3	121.1	4.8	3.1	1.0	-0.2	0.7
Pearls, stones, precious metals, imitation jewelry, and coins.....	XIV	2.944	176.2	181.3	16.6	3.0	3.7	2.3	2.9
Base metals and articles of base metals.....	XV	5.212	187.7	191.4	12.2	1.2	2.2	0.2	2.0
Iron and steel.....	72	0.916	231.0	240.0	19.1	-1.2	1.6	0.7	3.9
Articles of iron or steel.....	73	1.588	152.7	153.1	8.9	0.3	0.1	0.1	0.3
Copper and articles thereof.....	74	0.602	379.8	405.5	23.3	5.7	5.8	2.0	6.8
Nickel and articles thereof (Dec. 2009=100)...	75	0.173	128.0	131.8	32.9	3.4	5.9	-4.3	3.0
Aluminum and articles thereof.....	76	0.908	144.1	145.1	8.8	2.4	3.9	-0.1	0.7
Tools, implements, cutlery, spoons and forks, of base metal; parts thereof.....	82	0.332	120.3	121.8	3.1	0.6	0.3	0.8	1.2
Miscellaneous articles of base metal.....	83	0.379	127.8	128.8	1.0	0.3	0.1	0.2	0.8
Machinery, electrical equipment, TV image and sound recorders, parts, etc.....	XVI	24.930	85.9	85.7	-1.6	-0.2	0.0	-0.1	-0.2
Machinery and mechanical appliances; parts thereof.....	84	12.348	88.5	88.2	-0.1	0.2	0.0	0.0	-0.3
Electrical machinery and equip, sound and TV recorders & reproducers, parts.....	85	12.582	83.3	83.2	-3.3	-0.8	0.0	-0.4	-0.1
Vehicles, aircraft, vessels and associated transport equipment.....	XVII	9.011	110.5	110.5	0.5	0.1	0.1	-0.2	0.0
Motor vehicles and their parts.....	87	7.999	109.6	109.5	0.6	0.2	0.1	-0.2	-0.1
Aircraft, spacecraft, and parts thereof (Dec. 2002=100).....	88	0.925	113.8	113.8	-1.6	0.0	0.1	0.0	0.0
Optical, photo, measuring, medical & musical instruments; & timepieces.....	XVIII	3.259	101.8	104.3	2.9	0.3	0.3	0.2	2.5
Optical, photographic, measuring and medical instruments.....	90	3.006	99.4	102.0	2.9	0.3	0.2	0.2	2.6
Clocks and watches and parts thereof.....	91	0.187	124.2	125.1	0.3	0.5	0.8	0.1	0.7
Miscellaneous manufactured articles.....	XX	3.651	107.2	107.4	0.6	0.3	0.0	0.2	0.2
Furniture & stuffed furnishings; lamps & lighting fittings, nesoi; prefab bldgs.....	94	1.792	110.4	110.2	0.0	0.2	0.1	0.4	-0.2
Toys, games and sports equipment; parts and accessories thereof.....	95	1.652	101.0	101.4	0.3	0.2	-0.1	0.0	0.4
Miscellaneous manufactured articles.....	96	0.208	124.9	127.3	7.2	1.3	0.4	0.3	1.9

¹ Relative importance figures are based on 2009 trade values.

NOTES: Data may be revised in each of the three months after original publication.

Dash = Not available

Table 6. U.S. export price indexes and percent changes for selected categories of goods: January 2010 to January 2011

[2000=100, unless otherwise noted]

Description	Harmoni- zied system	Relative importance Dec. 2010 ¹	Index		Percent change				
			Dec. 2010	Jan. 2011	Annual	Monthly			
					Jan. 2010 to Jan. 2011	Sept. 2010 to Oct. 2010	Oct. 2010 to Nov. 2010	Nov. 2010 to Dec. 2010	Dec. 2010 to Jan. 2011
Live animals; animal products.....	I	1.868	179.3	181.0	16.0	2.2	-0.7	0.7	0.9
Meat & edible meat offal (Dec. 2006=100). . .	02	1.135	144.9	145.6	17.2	2.1	-0.9	-0.3	0.5
Fish and crustaceans, molluscs and other aquatic invertebrates.....	03	0.394	173.1	184.2	30.5	3.3	0.0	6.9	6.4
Vegetable products.....	II	5.763	225.6	239.4	24.6	2.8	10.9	1.2	6.1
Edible fruit and nuts; peel of citrus fruit or melons.....	08	0.994	129.4	134.6	7.1	4.2	3.5	1.9	4.0
Cereals.....	10	2.135	256.1	277.1	40.7	2.8	16.4	-1.2	8.2
Oilseeds and misc. grains, seeds, fruits, plants, straw and fodder.....	12	2.150	251.0	263.6	25.8	3.7	11.9	4.1	5.0
Animal or vegetable fats and oils (Dec. 2009=100).....	III	0.498	140.2	150.8	46.8	4.6	8.0	12.3	7.6
Prepared foodstuffs, beverages, and tobacco.....	IV	2.710	147.1	146.6	3.3	1.0	1.2	0.5	-0.3
Preparations of vegetables, fruit, nuts or other parts of plants (Dec. 2009=100).....	20	0.346	104.5	103.9	3.0	0.3	-0.7	1.1	-0.6
Miscellaneous edible preparations.....	21	0.462	119.1	120.6	1.2	0.4	0.0	0.1	1.3
Beverages, spirits, and vinegar (Dec. 2008=100).....	22	0.346	104.6	103.6	-0.7	2.1	0.1	-0.8	-1.0
Residues and waste from the food industries; prepared animal feed.....	23	0.734	219.9	216.8	10.1	2.7	6.4	1.3	-1.4
Mineral products.....	V	7.795	277.3	289.1	21.7	2.9	3.7	2.0	4.3
Mineral fuels, oils and residuals, bituminous substances and mineral waxes.....	27	7.154	270.1	282.6	21.9	3.1	4.0	2.6	4.6
Products of the chemical or allied industries.....	VI	12.984	148.2	148.8	7.1	0.3	1.1	0.3	0.4
Inorganic chemicals.....	28	1.046	194.1	197.4	17.6	1.6	1.7	1.0	1.7
Organic chemicals.....	29	3.225	154.6	156.6	7.2	-1.1	0.9	0.6	1.3
Pharmaceutical products.....	30	4.076	125.9	125.7	4.2	0.7	1.1	-0.4	-0.2
Tanning or dyeing extracts, dyes, paints, varnish, putty, & inks.....	32	0.552	118.1	118.4	5.1	1.6	1.6	-3.4	0.3
Essential oils and resinoids; perfumery cosmetic or toilet preparations.....	33	0.758	126.6	126.4	1.9	0.5	1.0	0.1	-0.2
Soap; lubricants; waxes, polishing or scouring products; candles, pastes.....	34	0.484	121.1	121.4	4.8	-2.4	0.9	0.0	0.2
Miscellaneous chemical products.....	38	1.829	143.5	144.4	5.9	0.3	0.1	0.1	0.6
Plastics and articles thereof; rubber and articles thereof.....	VII	5.133	140.3	141.2	6.0	0.1	0.8	0.6	0.6
Plastics and articles thereof.....	39	4.175	134.0	134.6	6.7	0.2	0.9	0.7	0.4
Rubber and articles thereof.....	40	0.958	168.6	170.5	3.0	0.1	0.4	0.1	1.1
Raw hides, skins, leather, furskins, travel goods, etc.....	VIII	0.409	123.0	124.5	14.2	0.4	0.7	0.7	1.2
Wood, wood charcoal, cork, straw, basketware and wickerwork.....	IX	0.530	109.8	108.8	1.6	-0.2	1.3	-0.7	-0.9
Woodpulp, recovered paper, and paper products.....	X	2.758	123.8	125.4	11.7	0.7	0.7	0.0	1.3
Woodpulp and recovered paper.....	47	0.947	146.5	149.2	27.2	1.9	3.0	0.4	1.8
Paper and paperboard; articles of paper pulp, paper or paperboard.....	48	1.309	117.5	118.9	7.9	0.0	-0.4	-0.3	1.2
Printed material.....	49	0.502	117.3	118.0	1.6	1.0	-0.1	0.0	0.6
Textile and textile articles.....	XI	2.330	143.6	145.2	32.5	3.8	9.7	4.5	1.1
Cotton, including yarns and woven fabrics thereof.....	52	1.049	224.9	226.0	96.9	10.6	24.9	10.1	0.5

See footnotes at end of table.

Table 6. U.S. export price indexes and percent changes for selected categories of goods: January 2010 to January 2011 — Continued
 [2000=100, unless otherwise noted]

Description	Harmo- nized system	Relative importance Dec. 2010 ¹	Index		Percent change				
			Dec. 2010	Jan. 2011	Annual	Monthly			
					Jan. 2010 to Jan. 2011	Sept. 2010 to Oct. 2010	Oct. 2010 to Nov. 2010	Nov. 2010 to Dec. 2010	Dec. 2010 to Jan. 2011
Stone, plaster, cement, asbestos, ceramics, glass etc. (Dec. 2008=100).....	XIII	0.711	116.0	115.6	-1.6	0.1	0.3	-0.3	-0.3
Glass and glassware.....	70	0.394	98.2	99.1	-0.9	0.3	0.4	-0.5	0.9
Pearls, stones, precious metals, imitation jewelry, and coins.....	XIV	4.801	236.6	240.6	21.6	4.0	3.3	2.1	1.7
Base metals and articles of base metals.....	XV	5.598	167.9	174.7	10.8	0.5	0.6	1.5	4.1
Iron and steel.....	72	1.693	198.8	213.5	18.2	-1.8	-0.7	4.2	7.4
Articles of iron or steel.....	73	1.244	159.8	162.7	3.6	-0.3	0.5	0.1	1.8
Copper and articles thereof.....	74	0.715	259.0	278.2	24.2	4.2	2.1	2.6	7.4
Aluminum and articles thereof.....	76	0.941	128.9	132.3	7.2	2.9	2.1	-0.5	2.6
Tools, implements, cutlery, spoons and forks, of base metal; parts thereof.....	82	0.348	125.4	125.4	1.2	1.0	0.0	0.0	0.0
Miscellaneous articles of base metal.....	83	0.296	124.8	121.9	-0.4	0.4	-0.4	0.5	-2.3
Machinery, electrical equipment, TV image and sound recorders, parts, etc.....	XVI	27.386	95.6	96.1	0.2	-0.1	0.4	0.1	0.5
Machinery and mechanical appliances; parts thereof.....	84	15.969	106.9	107.6	1.1	-0.1	0.5	0.0	0.7
Electrical machinery and equipment and parts and accessories thereof.....	85	11.417	83.4	83.5	-1.1	-0.1	0.2	0.4	0.1
Vehicles, aircraft, vessels and associated transport equipment.....	XVII	11.024	122.2	122.6	1.7	0.1	0.2	0.2	0.3
Motor vehicles and their parts.....	87	6.181	108.9	108.9	0.8	0.2	0.2	0.0	0.0
Optical, photo, measuring, medical & musical instruments; & timepieces.....	XVIII	6.137	107.1	105.5	-0.8	0.1	0.2	0.0	-1.5
Miscellaneous manufactured articles.....	XX	1.420	107.2	107.3	-1.2	-0.2	-0.1	-0.3	0.1
Furniture; stuffed furnishings; lamps and lighting fittings nesoi;.....	94	0.680	118.3	118.2	0.7	-0.1	-0.2	-0.2	-0.1
Toys, games and sports equipment; parts and accessories thereof.....	95	0.632	91.6	91.5	-3.9	-0.4	0.1	-0.7	-0.1

1 Relative importance figures are based on 2009 trade values.

NOTES: Data may be revised in each of the three months after original publication.

Dash = Not available

Table 7. U.S. import price indexes and percent changes by locality of origin: January 2010 to January 2011
 [2000=100, unless otherwise noted]

Description	Percent of U.S. imports ¹	Index		Percent change				
		Dec. 2010	Jan. 2011	Annual	Monthly			
				Jan. 2010 to Jan. 2011	Sept. 2010 to Oct. 2010	Oct. 2010 to Nov. 2010	Nov. 2010 to Dec. 2010	Dec. 2010 to Jan. 2011
Industrialized Countries²	39.494	127.6	129.3	3.0	-0.1	1.8	0.7	1.3
Nonmanufactured articles.....	4.457	211.8	222.1	5.9	1.0	6.8	4.3	4.9
Manufactured articles.....	34.670	120.8	121.7	2.4	-0.2	1.3	0.2	0.7
Other Countries³	60.506	128.7	130.4	5.4	1.4	1.4	1.3	1.3
Nonmanufactured articles.....	12.079	285.8	294.9	14.9	4.8	3.6	3.7	3.2
Manufactured articles.....	48.226	106.8	107.6	2.5	0.3	0.8	0.4	0.7
Canada	14.271	146.8	150.9	5.7	0.6	2.6	1.7	2.8
Nonmanufactured articles.....	3.991	204.6	215.0	5.2	0.6	7.0	4.4	5.1
Manufactured articles.....	10.005	135.5	137.9	5.6	0.5	1.2	0.6	1.8
European Union⁴	17.186	129.1	130.4	2.1	-0.1	0.6	0.0	1.0
Nonmanufactured articles.....	0.256	270.9	272.8	10.4	0.0	4.2	3.2	0.7
Manufactured articles.....	16.854	126.4	127.6	1.9	-0.2	0.6	-0.1	0.9
France (Dec. 2003=100)	1.995	121.4	121.8	-1.9	0.0	0.3	-0.3	0.3
Germany (Dec. 2003=100)	4.510	112.4	112.7	-1.2	0.5	0.4	-0.3	0.3
United Kingdom (Dec. 2003=100)	2.795	128.3	129.8	3.8	0.4	0.6	0.8	1.2
Latin America⁵	18.406	163.0	166.6	5.8	1.7	1.9	1.1	2.2
Nonmanufactured articles.....	5.479	309.4	318.9	11.6	4.1	3.5	3.0	3.1
Manufactured articles.....	12.844	131.9	134.1	2.7	0.6	1.1	0.2	1.7
Mexico (Dec. 2003=100)	11.380	139.9	141.6	2.8	1.3	0.8	0.8	1.2
Nonmanufactured articles (Dec. 2008=100).....	1.900	167.4	173.1	12.9	5.3	2.4	5.3	3.4
Manufactured articles (Dec. 2008=100)....	9.437	95.7	96.3	-0.2	0.2	0.2	-0.5	0.6
Pacific Rim (Dec. 2003=100)⁶	34.852	102.0	102.3	1.9	-0.1	0.1	0.6	0.3
China (Dec. 2003=100)	19.595	101.4	101.7	1.4	0.3	0.3	0.3	0.3
Japan	6.198	99.8	100.2	2.3	0.3	0.2	0.3	0.4
Asian NICs⁷	5.555	88.4	89.0	1.9	-1.0	-0.2	1.0	0.7
ASEAN (Dec. 2003=100)⁸	5.987	100.4	102.5	5.9	0.3	0.9	1.9	2.1
Asia Near East (Dec. 2003=100)⁹	3.795	223.3	227.9	11.8	2.4	2.4	4.5	2.1

1 Percentage of trade figures are based on 2009 trade values.

2 Includes Western Europe, Canada, Japan, Australia, New Zealand and South Africa.

3 Includes Eastern Europe, Latin America, OPEC countries, and other countries in Asia, Africa and the Western Hemisphere.

4 Includes European Union countries.

5 Includes Mexico, Central America, South America and the Caribbean.

6 Includes China, Japan, Australia, Brunei, Indonesia, Macao, Malaysia, New Zealand, Papua New Guinea, Philippines and Asian Newly Industrialized Countries.

7 Asian Newly Industrialized Countries. Includes Hong Kong, Singapore, South Korea and Taiwan.

8 Association of Southeast Asian Nations. Includes Brunei, Cambodia, Indonesia, Laos, Malaysia, Myanmar, Philippines, Singapore, Thailand and Vietnam.

9 Includes Bahrain, Iran, Iraq, Israel, Jordan, Kuwait, Lebanon, Oman, Qatar, Saudi Arabia, Syria, United Arab Emirates and Yemen.

NOTES: Data may be revised in each of the three months after original publication.

Regions are not mutually exclusive.

Dash = Not available

Table 8. U.S. international price indexes and percent changes for selected transportation services: January 2010 to January 2011

[2000=100, unless otherwise noted]

Description	Relative importance Dec. 2010 ¹	Index		Percent change				
		Dec. 2010	Jan. 2011	Annual	Monthly			
				Jan. 2010 to Jan. 2011	Sept. 2010 to Oct. 2010	Oct. 2010 to Nov. 2010	Nov. 2010 to Dec. 2010	Dec. 2010 to Jan. 2011
Air Freight								
Import Air Freight	100.000	170.0	167.2	6.7	1.0	2.9	0.2	-1.6
Europe (Dec. 2003=100).....	22.167	142.5	141.4	2.2	3.2	4.6	0.3	-0.8
Asia.....	74.272	156.4	153.2	7.6	0.3	2.5	0.3	-2.0
Export Air Freight	100.000	127.9	132.8	7.9	0.5	0.7	0.6	3.8
Europe (Dec. 2006=100).....	39.289	117.2	120.7	6.5	0.6	0.2	1.7	3.0
Inbound Air Freight	100.000	153.5	153.1	6.3	1.6	2.1	0.5	-0.3
Europe (Dec. 2003=100).....	22.632	132.5	132.4	2.8	2.2	3.8	0.4	-0.1
Asia.....	65.649	141.1	140.6	6.7	0.7	2.1	0.2	-0.4
Outbound Air Freight	100.000	126.4	129.8	12.4	1.3	0.2	1.4	2.7
Europe (Dec. 2003=100).....	37.653	147.3	149.4	11.5	1.8	0.3	2.1	1.4
Asia.....	43.312	114.2	118.3	11.8	1.3	0.2	0.8	3.6
Air Passenger Fares								
Import Air Passenger Fares	100.000	169.9	165.4	12.2	4.8	-1.3	2.1	-2.6
Europe.....	36.664	170.7	176.9	15.2	5.8	-3.2	-5.8	3.6
Asia.....	27.808	156.8	142.1	6.9	3.9	-1.9	9.8	-9.4
Latin America/Caribbean.....	15.109	171.1	157.7	20.6	5.0	4.5	9.2	-7.8
Export Air Passenger Fares	100.000	169.0	182.3	15.6	-2.3	-3.2	3.7	7.9
Europe.....	28.787	189.3	185.9	-0.2	-0.9	-13.6	2.2	-1.8
Asia.....	30.859	157.6	177.1	31.3	-6.1	3.9	-1.1	12.4
Latin America/Caribbean.....	21.673	189.0	203.5	15.4	-1.5	3.8	9.9	7.7

¹ Relative importance figures are based on 2009 trade values.

NOTES: Data may be revised in each of the three months after original publication.

Dash = Not available

TECHNICAL NOTE

Import and Export Merchandise and Services Price Indexes -- All indexes use a modified Laspeyres formula and are not seasonally adjusted. Price indexes are reweighted annually, with a two-year lag in the weights. Published series use a base year of 2000=100 where possible. More detailed index series and additional information may be obtained at <http://www.bls.gov/mxp>, or by calling (202) 691-7101.

Merchandise Goods Classification Systems -- The merchandise price indexes are published using three classification systems. Items are classified by end use according to the Bureau of Economic Analysis Classification System, by industry according to the North American Industry Classification System (NAICS), and by product category according to the Harmonized System (HS). While classification by end use and product category are self-explanatory, some notes are in order for classifying items by industry. In the NAICS imports and exports tables, items are classified by output industry, not input industry. As an example, NAICS import index 326 (plastics and rubber products manufacturing) include outputs such as manufactured plastic rather than inputs such as petroleum. The NAICS classification structure also matches the classification system used by the PPI (Producer Price Index) to produce the NAICS primary products indexes.

Import Price Indexes -- Products have been classified by the Harmonized Tariff Schedule of the United States Annotated (TSUSA). Import prices are based on U.S. dollar prices paid by the U.S. importer. The prices are generally either "free on board" (f.o.b.) foreign port or "cost, insurance, and freight" (c.i.f.) U.S. port transaction prices, depending on the practices of the individual industry. The index for crude petroleum is calculated from data collected by the U.S. Department of Energy.

Export Price Indexes -- Products have been classified by the Harmonized Schedule B classification system of the U.S. Bureau of the Census. The prices used are generally either "free alongside ship" (f.a.s.) factory or "free on board" (f.o.b.) transaction prices, depending on the practices of the individual industry. Prices used in the grain index, excluding rice, are obtained from the U.S. Department of Agriculture.

Services Price Indexes -- Starting in September 2008 the Import Air Passenger Fares Indexes represent changes in the average revenue per passenger received by foreign carriers from U.S. residents and are calculated from data obtained from an airline consulting service. These data include tickets sold by travel agencies and travel websites. Tickets sold directly by the airlines are excluded, as are frequent flyer tickets generally. Starting in January 2008 the Export Air Passenger Fares Indexes represent changes in the average revenue per passenger received by U.S. carriers from foreign residents and are calculated from data collected directly from airlines. These data include frequent flyer tickets and those sold by consolidators. Taxes and fees are included in the Import Air Passenger Fares Index and excluded from the Export Air Passenger Fares Index. The Air Freight Indexes are calculated from data collected directly from airlines. These data exclude mail and passenger baggage. The scope of the service being priced is the movement of freight from airport to airport only, and does not include any ground transportation or port service. The Air Freight Indexes are presented using two definitions: Balance of Payments (which represent transactions between U.S. and foreign residents) and International (which represent transactions inbound to and outbound from the U.S.). Fact sheets specifying detailed information for each services industry are available at <http://www.bls.gov/mxp> under "MXP Publications."

Import Indexes by Locality of Origin -- Prices used in these indexes are a subset of the data collected for the Import Price Indexes. Beginning with January 2002, the indexes are defined by locality of origin using a nomenclature based upon the North American Industry Classification System (NAICS). Nonmanufactured goods are defined as NAICS 11 and 21 and manufactured goods are defined as NAICS 31-33.

Revision Policy -- To reflect the availability of late reports and corrections by respondents, monthly data may be revised in each of the three months after original publication. After three months, no further data revisions take place. So, for example, data released in the January release will be subject to revision in the releases for February, March, and April.

Uses of the Data -- The primary use of the indexes is to deflate trade statistics, notably the foreign trade sector of the National Income and Product Accounts constructed by the Department of Commerce. Other published indexes are useful for general market analysis. For trade in international services, Balance of Payments indexes are used for deflating National Income and Product Accounts, while International indexes are more appropriate for market analysis. Merchandise and services indexes also can be used to study U.S. competitiveness and to compute price elasticities, and the merchandise import indexes by country or region of origin are useful in terms of trade analysis.

E-Mail Subscription -- The U.S. Import and Export Price Indexes news release is available through an e-mail subscription service at (<http://www.bls.gov/bls/list.htm>).

Additional Information -- More detailed data are available on the Import/Export Price Indexes home page at (<http://www.bls.gov/mxp>). Flat Files and the FTP server are available for users requiring access to either a large volume of time series data or other related documentation. The FTP site can be accessed at <ftp://ftp.bls.gov>. For technical assistance in using the BLS Internet site, send e-mail to (labstat.helpdesk@bls.gov). For Import/Export Price Index data requests, send e-mail to (mxpinfo@bls.gov).

Information from this release will be made available to sensory impaired individuals upon request. Voice phone: 202-691-5200; Federal Relay Service: 1-800-877-8339.