

**Transmission of material in this release is embargoed until  
8:30 a.m. (EDT) Friday, May 13, 2011**

USDL-11-0681

Technical information: (202) 691-7000 • Reed.Steve@bls.gov • www.bls.gov/cpi  
Media Contact: (202) 691-5902 • PressOffice@bls.gov

### CONSUMER PRICE INDEX – APRIL 2011

The Consumer Price Index for All Urban Consumers (CPI-U) increased 0.4 percent in April on a seasonally adjusted basis, the U.S. Bureau of Labor Statistics reported today. Over the last 12 months, the all items index increased 3.2 percent before seasonal adjustment.

The energy index posted another increase in April as the gasoline index continued to rise, the latter accounting for almost half of the seasonally adjusted all items increase. The household energy index also rose, with all of its major components posting increases. The food index increased as well in April, though the 0.5 percent rise in the food at home index was the smallest increase this year. Within the food at home component, the indexes for meats, poultry, fish, and eggs, for dairy and related products, and for nonalcoholic beverages all posted notable increases, though the fresh vegetables index did decline following recent advances.

The index for all items less food and energy rose 0.2 percent in April, the third increase of that size in the last four months. Indexes making major contributions to that increase included those for new vehicles, used cars and trucks, medical care, and shelter.

The 12-month increases of major indexes continue to climb. The all items index rose 3.2 percent for the 12 months ending April 2011, the highest figure since October 2008. The energy index has now risen 19.0 percent over the last 12 months, with the gasoline index up 33.1 percent. The food index has risen 3.2 percent while the index for all items less food and energy has increased 1.3 percent; both figures represent increases over recent months.

**Chart 1. One-month percent change in CPI for All Urban Consumers (CPI-U), seasonally adjusted, Apr. 2010 - Apr. 2011**  
Percent change

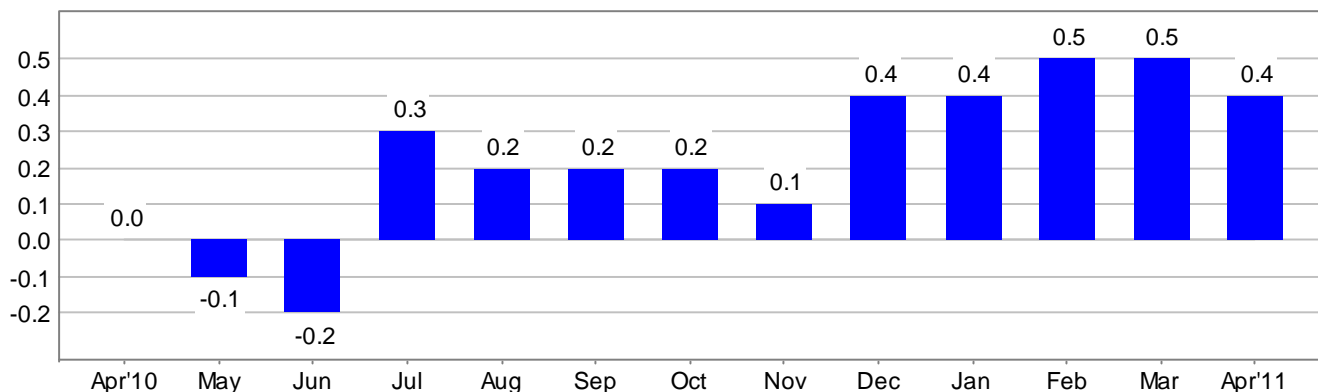


Chart 2. 12-month percent change in CPI for All Urban Consumers (CPI-U), not seasonally adjusted, Apr. 2010 - Apr. 2011

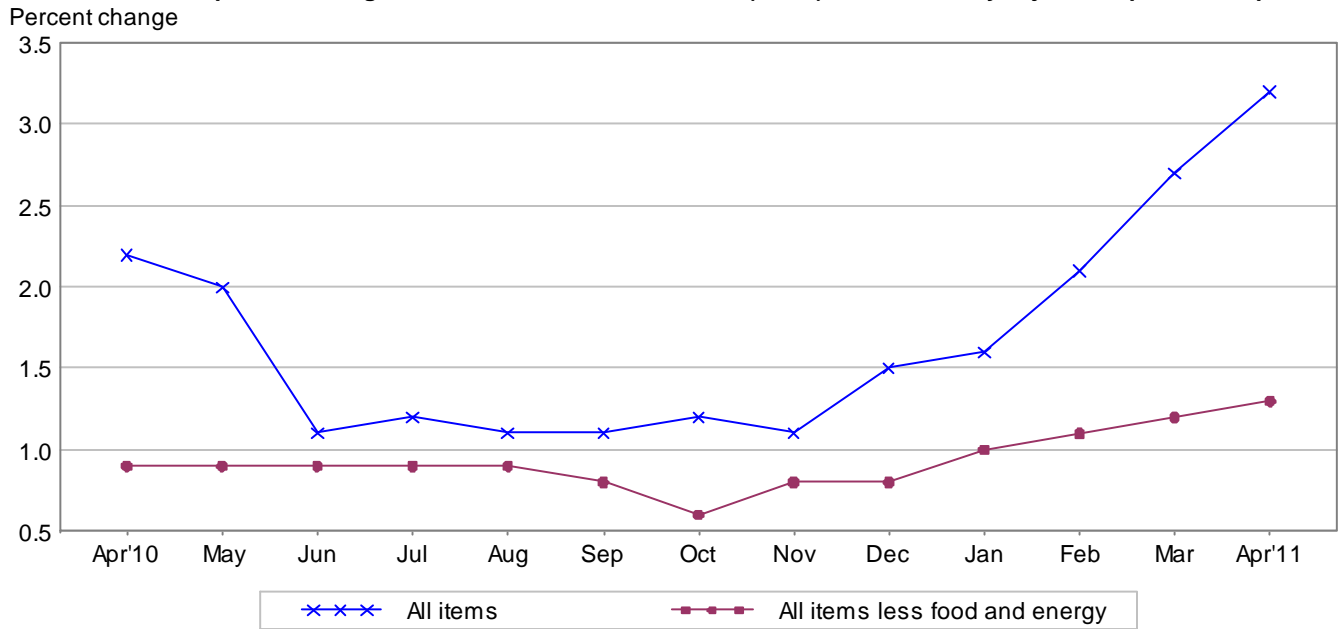


Table A. Percent changes in CPI for All Urban Consumers (CPI-U): U.S. city average

	Seasonally adjusted changes from preceding month							Un-adjusted 12-mos. ended Apr. 2011
	Oct. 2010	Nov. 2010	Dec. 2010	Jan. 2011	Feb. 2011	Mar. 2011	Apr. 2011	
All items .....	.2	.1	.4	.4	.5	.5	.4	3.2
Food .....	.1	.2	.1	.5	.6	.8	.4	3.2
Food at home .....	.1	.2	.2	.7	.8	1.1	.5	3.9
Food away from home <sup>1</sup> .....	.1	.1	.1	.2	.2	.3	.3	2.1
Energy .....	2.5	.1	4.0	2.1	3.4	3.5	2.2	19.0
Energy commodities .....	4.4	.7	6.4	4.0	4.8	5.5	3.1	32.7
Gasoline (all types) .....	4.5	.7	6.7	3.5	4.7	5.6	3.3	33.1
Fuel oil <sup>1</sup> .....	4.7	4.2	4.9	6.8	5.8	6.2	3.2	35.1
Energy services .....	.0	-.8	.6	-.6	1.1	.2	.6	.1
Electricity .....	.2	.6	.3	-.5	.4	.7	.2	.6
Utility (piped) gas service .....	-.6	-5.3	1.7	-1.2	3.4	-1.4	1.9	-1.5
All items less food and energy .....	.0	.1	.1	.2	.2	.1	.2	1.3
Commodities less food and energy commodities .....	-.2	.0	-.1	.2	.2	.1	.4	.7
New vehicles .....	-.1	-.2	-.1	-.1	1.0	.7	.7	2.4
Used cars and trucks .....	-.6	.1	-.1	-.3	.1	.8	1.2	3.3
Apparel .....	-.2	.1	.1	1.0	-.9	-.5	.2	.1
Medical care commodities <sup>1</sup> .....	.1	.2	.1	.5	.7	.5	.5	3.1
Services less energy services .....	.1	.2	.1	.1	.2	.2	.1	1.6
Shelter .....	.1	.1	.1	.1	.1	.1	.1	1.0
Transportation services .....	.3	.4	.2	.6	.5	.5	.2	3.6
Medical care services .....	.2	.2	.3	-.1	.4	.1	.3	2.8

<sup>1</sup> Not seasonally adjusted.

## **Consumer Price Index Data for April 2011**

### **Food**

The food index rose 0.4 percent in April after rising 0.8 percent in March. The food at home index, up 1.1 percent in March, rose 0.5 percent in April. The deceleration was mainly due to the fresh vegetables index, which turned down in April, falling 2.7 percent after posting large increases in each of the previous two months. This led to the fruits and vegetables index declining 1.1 percent, the only major grocery store food group to decline in April. In contrast to this decline, the index for dairy and related products rose 1.7 percent, the index for nonalcoholic beverages advanced 1.2 percent, and the index for meats, poultry, fish, and eggs increased 1.1 percent. The indexes for cereals and bakery products and for other food at home posted smaller increases. The food at home index has risen 3.9 percent over the last 12 months, with all major grocery store food groups increasing over the period. The index for food away from home rose 0.3 percent in April, the same increase as in March.

### **Energy**

The energy index rose 2.2 percent in April. This is the tenth increase in a row and follows advances of 3.5 percent in March and 3.4 percent in February. The gasoline index rose 3.3 percent in April after a 5.6 percent increase in March. (Before seasonal adjustment, gasoline prices rose 7.5 percent in April.) The index for household energy also increased in April, rising 0.7 percent. The fuel oil index rose 3.2 percent, continuing a strong upward trend, while the index for electricity increased 0.2 percent. The index for natural gas, which declined in March, rose 1.9 percent in April. The household energy index has risen 1.9 percent over the last 12 months, with the fuel oil index up 35.1 percent and the electricity index up 0.6 percent but the index for natural gas down 1.5 percent.

### **All items less food and energy**

The index for all items less food and energy rose 0.2 percent in April after increasing 0.1 percent in March. The shelter index, and its rent and owners' equivalent rent components, all repeated their March increases of 0.1 percent. The new vehicles index rose 0.7 percent, also a repeat of its March increase, while the index for used cars and trucks advanced 1.2 percent in April after a 0.8 percent increase in March. The index for medical care, which rose 0.2 percent in March, advanced 0.4 percent in April. The index for medical care commodities increased 0.5 percent while the medical care services index rose 0.3 percent. The indexes for apparel and for household furnishings and operations both turned up in April, each rising 0.2 percent after declining in March. The index for recreation was unchanged in April, as it was in March. The tobacco index declined in April, falling 0.4 percent, its largest decline since 2007.

The index for all items less food and energy increased 1.3 percent over the last 12 months. Indexes that have increased over that time include airline fares (up 12.1 percent), medical care (up 2.9 percent), new vehicles (up 2.4 percent), and shelter (up 1.0 percent). Indexes that have declined included household furnishings and operations (down 0.9 percent) and recreation (down 0.4 percent).

## **Not seasonally adjusted CPI measures**

The Consumer Price Index for All Urban Consumers (CPI-U) increased 3.2 percent over the last 12 months to an index level of 224.906 (1982-84=100). For the month, the index increased 0.6 percent prior to seasonal adjustment.

The Consumer Price Index for Urban Wage Earners and Clerical Workers (CPI-W) increased 3.6 percent over the last 12 months to an index level of 221.743 (1982-84=100). For the month, the index rose 0.8 percent prior to seasonal adjustment.

The Chained Consumer Price Index for All Urban Consumers (C-CPI-U) increased 2.9 percent over the last 12 months. For the month, the index increased 0.6 percent on a not seasonally adjusted basis. Please note that the indexes for the post-2009 period are subject to revision.

---

**The Consumer Price Index for May 2011 is scheduled to be released on Wednesday, June 15, 2011, at 8:30 a.m. (EDT).**

## **Facilities for Sensory Impaired**

Information from this release will be made available to sensory impaired individuals upon request.  
Voice phone: 202-691-5200, Federal Relay Services: 1-800-877-8339.

## **Brief Explanation of the CPI**

The Consumer Price Index (CPI) is a measure of the average change in prices over time of goods and services purchased by households. The Bureau of Labor Statistics publishes CPIs for two population groups: (1) the CPI for Urban Wage Earners and Clerical Workers (CPI-W), which covers households of wage earners and clerical workers that comprise approximately 32 percent of the total population and (2) the CPI for All Urban Consumers (CPI-U) and the Chained CPI for All Urban Consumers (C-CPI-U), which cover approximately 87 percent of the total population and include in addition to wage earners and clerical worker households, groups such as professional, managerial, and technical workers, the self-employed, short-term workers, the unemployed, and retirees and others not in the labor force.

The CPIs are based on prices of food, clothing, shelter, and fuels, transportation fares, charges for doctors' and dentists' services, drugs, and other goods and services that people buy for day-to-day living. Prices are collected each month in 87 urban areas across the country from about 4,000 housing units and approximately 26,000 retail establishments-department stores, supermarkets, hospitals, filling stations, and other types of stores and service establishments. All taxes directly associated with the purchase and use of items are included in the index. Prices of fuels and a few other items are obtained every month in all 87 locations. Prices of most other commodities and services are collected every month in the three largest geographic areas and every other month in other areas. Prices of most goods and services are obtained by personal visits or telephone calls of the Bureau's trained representatives.

In calculating the index, price changes for the various items in each location are averaged together with weights, which represent their importance in the spending of the appropriate population group. Local data are then combined to obtain a U.S. city average. For the CPI-U and CPI-W separate indexes are also published by size of city, by region of the country, for cross-classifications of regions and population-size classes, and for 27 local areas. Area indexes do not measure differences in the level of prices among cities; they only measure the average change in prices for each area since the base period. For the C-CPI-U data are issued only at the national level. It is important to note that the CPI-U and CPI-W are considered final when released, but the C-CPI-U is issued in preliminary form and subject to two annual revisions.

The index measures price change from a designed reference date. For the CPI-U and the CPI-W the reference base is 1982-84 equals 100. The reference base for the C-CPI-U is December 1999 equals 100. An increase of 16.5 percent from the reference base, for example, is shown as 116.500. This change can also be expressed in dollars as follows: the price of a base period market basket of goods and services in the CPI has risen from \$10 in 1982-84 to \$11.65.

For further details visit the CPI home page on the Internet at <http://www.bls.gov/cpi/> or contact our CPI Information and Analysis Section on (202) 691-7000.

## Note on Sampling Error in the Consumer Price Index

The CPI is a statistical estimate that is subject to sampling error because it is based upon a sample of retail prices and not the complete universe of all prices. BLS calculates and publishes estimates of the 1-month, 2-month, 6-month and 12-month percent change standard errors annually, for the CPI-U. These standard error estimates can be used to construct confidence intervals for hypothesis testing. For example, the estimated standard error of the 1 month percent change is 0.03 percent for the U.S. All Items Consumer Price Index. This means that if we repeatedly sample from the universe of all retail prices using the same methodology, and estimate a percentage change for each sample, then 95% of these estimates would be within 0.06 percent of the 1 month percentage change based on all retail prices. For example, for a 1-month change of 0.2 percent in the All Items CPI for All Urban Consumers, we are 95 percent confident that the actual percent change based on all retail prices would fall between 0.14 and 0.26 percent. For the latest data, including information on how to use the estimates of standard error, see “Variance Estimates for Price Changes in the Consumer Price Index, January-December 2010”. These data are available on the CPI home page (<http://www.bls.gov/cpi>), or by using the following link <http://www.bls.gov/cpi/cpivar2010.pdf>

## Calculating Index Changes

Movements of the indexes from one month to another are usually expressed as percent changes rather than changes in index points, because index point changes are affected by the level of the index in relation to its base period while percent changes are not. The example below illustrates the computation of index point and percent changes.

Percent changes for 3-month and 6-month periods are expressed as annual rates and are computed according to the standard formula for compound growth rates. These data indicate what the percent change would be if the current rate were maintained for a 12-month period.

### Index Point Change

CPI	202.416
Less previous index	201.800
Equals index point change	.616

### Percent Change

Index point difference	.616
Divided by the previous index	201.800
Equals	0.003
Results multiplied by one hundred	0.003x100
Equals percent change	0.3

## Regions Defined

The states in the four regions shown in Tables 3 and 6 are listed below.

The Northeast--Connecticut, Maine, Massachusetts, New Hampshire, New York, New Jersey, Pennsylvania, Rhode Island, and Vermont.

The Midwest--Illinois, Indiana, Iowa, Kansas, Michigan, Minnesota, Missouri, Nebraska, North Dakota, Ohio, South Dakota, and Wisconsin.

The South--Alabama, Arkansas, Delaware, Florida, Georgia, Kentucky, Louisiana, Maryland, Mississippi, North Carolina, Oklahoma, South Carolina, Tennessee, Texas, Virginia, West Virginia, and the District of Columbia.

The West--Alaska, Arizona, California, Colorado, Hawaii, Idaho, Montana, Nevada, New Mexico, Oregon, Utah, Washington, and Wyoming.

## A Note on Seasonally Adjusted and Unadjusted Data

Because price data are used for different purposes by different groups, the Bureau of Labor Statistics publishes seasonally adjusted as well as unadjusted changes each month.

For analyzing general price trends in the economy, seasonally adjusted changes are usually preferred since they eliminate the effect of changes that normally occur at the same time and in about the same magnitude every year--such as price movements resulting from changing climatic conditions, production cycles, model changeovers, holidays, and sales.

The unadjusted data are of primary interest to consumers concerned about the prices they actually pay. Unadjusted data also are used extensively for escalation purposes. Many collective bargaining contract agreements and pension plans, for example, tie compensation changes to the Consumer Price Index before adjustment for seasonal variation.

Seasonal factors used in computing the seasonally adjusted indexes are derived by the X-12-ARIMA Seasonal Adjustment Method. Seasonally adjusted indexes and seasonal factors are computed annually. Each year, the last 5 years of seasonally adjusted data are revised. Data from January 2006 through December 2010 were replaced in January 2011. Exceptions to the usual revision schedule were: the updated seasonal data at the end of 1977 replaced data from 1967 through 1977; and, in January 2002, dependently seasonally adjusted series were revised for January 1987-December 2001 as a result of a change in the aggregation weights for dependently adjusted series. For further information, please see "Aggregation of Dependently Adjusted Seasonally Adjusted Series," in the October 2001 issue of the CPI Detailed Report.

Effective with the publication of data from January 2006 through December 2010 in January 2011, the Video and audio series and the Information technology, hardware and services series were changed from independently adjusted to dependently adjusted. This resulted in an increase in the number of seasonal components used in deriving seasonal movement of the All items and 54 other lower level aggregations, from 73 for the publication of January 1998 through December 2005 data to 82 for the publication of seasonally adjusted data for January 2006 and later. Each year the seasonal status of every series is reevaluated based upon certain statistical criteria. If any of the 82 components change their seasonal adjustment status from seasonally adjusted to not seasonally adjusted, not seasonally adjusted data will be used in the aggregation of the dependent series for the last 5 years, but the seasonally adjusted

indexes before that period will not be changed. Note: 37 of the 82 components are not seasonally adjusted for 2011.

Seasonally adjusted data, including the all items index levels, are subject to revision for up to five years after their original release. For this reason, BLS advises against the use of these data in escalation agreements.

Effective with the calculation of the seasonal factors for 1990, the Bureau of Labor Statistics has used an enhanced seasonal adjustment procedure called Intervention Analysis Seasonal Adjustment for some CPI series. Intervention Analysis Seasonal Adjustment allows for better estimates of seasonally adjusted data. Extreme values and/or sharp movements which might distort the seasonal pattern are estimated and removed from the data prior to calculation of seasonal factors. Beginning with the calculation of seasonal factors for 1996, X-12-ARIMA software was used for Intervention Analysis Seasonal Adjustment.

For the seasonal factors introduced in January 2011, BLS adjusted 29 series using Intervention Analysis Seasonal Adjustment, including selected food and beverage items, motor fuels, electricity and vehicles. For example, this procedure was used for the Motor fuel series to offset the effects of events such as damage to oil refineries from Hurricane Katrina.

For a complete list of Intervention Analysis Seasonal Adjustment series and explanations, please refer to the article "Intervention Analysis Seasonal Adjustment", located on our website at <http://www.bls.gov/cpi/cpisapage.htm>.

For additional information on seasonal adjustment in the CPI, please write to the Bureau of Labor Statistics, Division of Consumer Prices and Price Indexes, Washington, DC 20212 or contact David Levin at (202) 691-6968, or by e-mail at [Levin.David@bls.gov](mailto:Levin.David@bls.gov). If you have general questions about the CPI, please call our information staff at (202) 691-7000.



**Table 1. Consumer Price Index for All Urban Consumers (CPI-U): U.S. city average, by expenditure category and commodity and service group**

(1982-84=100, unless otherwise noted)

CPI-U  Expenditure category	Relative importance, December 2010	Unadjusted indexes		Unadjusted percent change to Apr. 2011 from—		Seasonally adjusted percent change from—		
		Mar. 2011	Apr. 2011	Apr. 2010	Mar. 2011	Jan. to Feb.	Feb. to Mar.	Mar. to Apr.
All items .....	100.000	223.467	224.906	3.2	0.6	0.5	0.5	0.4
All items (1967=100) .....	-	669.409	673.717	-	-	-	-	-
Food and beverages .....	14.792	225.479	226.248	3.1	.3	.5	.7	.4
Food .....	13.742	225.350	226.150	3.2	.4	.6	.8	.4
Food at home .....	7.816	223.430	224.233	3.9	.4	.8	1.1	.5
Cereals and bakery products .....	1.090	255.482	255.956	2.2	.2	.0	.5	.1
Meats, poultry, fish, and eggs .....	1.813	218.808	220.747	7.6	.9	1.2	1.1	1.1
Dairy and related products <sup>1</sup> .....	.839	206.161	209.707	6.3	1.7	.6	1.3	1.7
Fruits and vegetables .....	1.152	290.279	286.501	2.6	-1.3	2.2	1.9	-1.1
Nonalcoholic beverages and beverage materials .....	.926	165.038	166.086	2.4	.6	.2	.8	1.2
Other food at home .....	1.996	194.747	195.239	2.2	.3	.6	1.0	.3
Sugar and sweets <sup>1</sup> .....	.297	205.505	203.783	1.5	-.8	.8	.7	-.8
Fats and oils .....	.232	214.352	213.818	8.1	-.2	.9	2.8	.8
Other foods .....	1.466	206.743	207.892	1.4	.6	.5	.8	.5
Other miscellaneous foods <sup>1 2</sup> .....	.432	122.665	123.769	1.2	.9	.4	1.0	.9
Food away from home <sup>1</sup> .....	5.926	229.282	230.082	2.1	.3	.2	.3	.3
Other food away from home <sup>1 2</sup> .....	.329	161.886	162.218	2.2	.2	.7	.0	.2
Alcoholic beverages .....	1.051	225.693	226.053	1.7	.2	.2	.0	.3
Housing .....	41.460	217.707	217.901	1.0	.1	.3	.1	.2
Shelter .....	31.955	250.310	250.447	1.0	.1	.1	.1	.1
Rent of primary residence <sup>3</sup> .....	5.925	252.145	252.221	1.3	.0	.1	.1	.1
Lodging away from home <sup>2</sup> .....	.776	136.486	136.597	1.7	.1	.0	.8	.0
Owners' equivalent rent of residences <sup>3 4</sup> .....	24.905	258.263	258.400	.9	.1	.1	.1	.1
Owners' equivalent rent of primary residence <sup>3 4</sup> .....	23.310	258.253	258.387	.9	.1	.1	.1	.1
Tenants' and household insurance <sup>1 2</sup> .....	.349	125.863	126.574	1.4	.6	.3	-.5	.6
Fuels and utilities .....	5.096	216.672	217.254	2.6	.3	1.2	.6	.6
Household energy .....	4.000	190.071	190.622	1.9	.3	1.3	.6	.7
Fuel oil and other fuels <sup>1</sup> .....	.309	341.884	348.657	25.4	2.0	4.1	4.6	2.0
Energy services <sup>3</sup> .....	3.691	190.213	190.459	.1	.1	1.1	.2	.6
Water and sewer and trash collection services <sup>2</sup> .....	1.095	177.694	178.033	5.3	.2	.8	.5	.4
Household furnishings and operations .....	4.409	124.735	124.893	-.9	.1	.1	-.1	.2
Household operations <sup>1 2</sup> .....	.772	150.541	151.338	.8	.5	.1	-.5	.5
Apparel .....	3.601	121.286	122.226	.1	.8	-.9	-.5	.2
Men's and boys' apparel .....	.882	112.337	113.487	-.2	1.0	-.9	-.7	.0
Women's and girls' apparel .....	1.520	109.544	110.144	-.6	.5	-1.2	-.9	.3
Infants' and toddlers' apparel .....	.192	111.547	112.323	-3.6	.7	-1.6	.1	.3
Footwear .....	.700	128.518	128.581	-.7	.0	-.4	-.2	-.6
Transportation .....	17.308	211.014	216.867	11.8	2.8	1.9	2.2	1.4
Private transportation .....	16.082	206.165	212.210	12.0	2.9	1.9	2.3	1.5
New and used motor vehicles <sup>2</sup> .....	6.333	98.275	98.972	2.2	.7	.5	.8	.8
New vehicles .....	3.513	140.860	141.462	2.4	.4	1.0	.7	.7
Used cars and trucks .....	2.055	144.072	145.968	3.3	1.3	.1	.8	1.2
Motor fuel .....	5.079	303.565	326.024	33.2	7.4	4.8	5.6	3.2
Gasoline (all types) .....	4.865	302.574	325.282	33.1	7.5	4.7	5.6	3.3
Motor vehicle parts and equipment <sup>1</sup> .....	.408	140.686	141.590	4.3	.6	.3	-.2	.6
Motor vehicle maintenance and repair <sup>1</sup> .....	1.172	250.820	251.458	1.7	.3	.0	.0	.3
Public transportation .....	1.227	270.366	272.187	9.3	.7	1.9	1.3	.2
Medical care .....	6.627	397.726	398.813	2.9	.3	.4	.2	.4
Medical care commodities <sup>1</sup> .....	1.633	322.691	324.241	3.1	.5	.7	.5	.5
Medical care services .....	4.994	420.852	421.716	2.8	.2	.4	.1	.3
Professional services .....	2.830	334.671	334.978	2.4	.1	.5	.2	.1

See footnotes at end of table.

**Table 1. Consumer Price Index for All Urban Consumers (CPI-U): U.S. city average, by expenditure category and commodity and service group-Continued**

(1982-84=100, unless otherwise noted)

CPI-U	Relative importance, December 2010	Unadjusted indexes		Unadjusted percent change to Apr. 2011 from—		Seasonally adjusted percent change from—		
		Mar. 2011	Apr. 2011	Apr. 2010	Mar. 2011	Jan. to Feb.	Feb. to Mar.	Mar. to Apr.
<b>Expenditure category</b>								
Hospital and related services .....	1.703	634.387	637.188	5.4	0.4	0.5	0.2	0.6
Recreation <sup>2</sup> .....	6.293	113.261	113.368	-.4	.1	.3	.0	.0
Video and audio <sup>2</sup> .....	1.816	98.719	98.918	-1.2	.2	.5	.1	.0
Education and communication <sup>2</sup> .....	6.421	130.682	130.643	1.0	.0	.2	.1	.1
Education <sup>2</sup> .....	3.107	204.251	204.316	3.8	.0	.4	.3	.3
Educational books and supplies .....	.204	522.903	522.440	4.2	-.1	-.2	.6	.3
Tuition, other school fees, and childcare .....	2.903	586.914	587.151	3.8	.0	.4	.3	.3
Communication <sup>2</sup> .....	3.313	83.730	83.655	-1.5	-.1	.0	-.1	-.1
Information and information processing <sup>2</sup> .....	3.138	80.364	80.281	-1.8	-.1	.0	-.1	-.1
Telephone services <sup>1 2</sup> .....	2.334	101.258	101.191	-1.2	-.1	-.1	-.1	-.1
Information technology, hardware and services <sup>5</sup> .....	.804	9.196	9.176	-3.7	-.2	.2	-.3	-.3
Personal computers and peripheral equipment <sup>6</sup> .....	.228	72.073	72.010	-8.0	-.1	-.5	-1.6	-.2
Other goods and services .....	3.497	385.637	386.226	1.9	.2	.1	-.1	.1
Tobacco and smoking products <sup>1</sup> .....	.906	830.693	827.287	5.0	-.4	.2	.1	-.4
Personal care .....	2.591	207.758	208.485	.9	.3	.1	-.2	.3
Personal care products <sup>1</sup> .....	.671	160.981	161.418	-.1	.3	.3	-.2	.3
Personal care services <sup>1</sup> .....	.638	230.034	230.380	.3	.2	.1	-.1	.2
Miscellaneous personal services .....	1.055	359.096	361.062	2.3	.5	.2	.1	.4
<b>Commodity and service group</b>								
Commodities .....	40.012	182.728	185.311	5.7	1.4	1.0	1.2	.8
Food and beverages .....	14.792	225.479	226.248	3.1	.3	.5	.7	.4
Commodities less food and beverages .....	25.219	159.351	162.578	7.2	2.0	1.2	1.4	1.0
Nondurables less food and beverages .....	15.474	208.134	214.256	11.4	2.9	1.6	1.8	1.1
Apparel .....	3.601	121.286	122.226	.1	.8	-.9	-.5	.2
Nondurables less food, beverages, and apparel .....	11.873	266.993	276.504	15.0	3.6	2.1	2.9	1.5
Durables .....	9.745	111.707	112.242	.7	.5	.4	.4	.6
Services .....	59.988	263.956	264.256	1.5	.1	.3	.2	.2
Rent of shelter <sup>4</sup> .....	31.607	260.834	260.963	1.0	.0	.0	.0	.1
Tenants' and household insurance <sup>1 2</sup> .....	.349	125.863	126.574	1.4	.6	.3	-.5	.6
Energy services <sup>3</sup> .....	3.691	190.213	190.459	.1	.1	1.1	.2	.6
Water and sewer and trash collection services <sup>2</sup> .....	1.095	177.694	178.033	5.3	.2	.8	.5	.4
Household operations <sup>1 2</sup> .....	.772	150.541	151.338	.8	.5	.1	-.5	.5
Transportation services .....	6.140	266.754	267.587	3.6	.3	.5	.5	.2
Medical care services .....	4.994	420.852	421.716	2.8	.2	.4	.1	.3
Other services .....	11.340	312.310	312.593	1.3	.1	.2	.1	.1
<b>Special indexes</b>								
All items less food .....	86.258	223.192	224.731	3.2	.7	.5	.5	.4
All items less shelter .....	68.045	215.505	217.475	4.2	.9	.7	.8	.6
All items less medical care .....	93.373	214.907	216.346	3.2	.7	.6	.6	.4
Commodities less food .....	26.270	161.804	164.964	7.0	2.0	1.2	1.4	1.0
Nondurables less food .....	16.525	209.282	215.090	10.8	2.8	1.5	1.7	1.1
Nondurables less food and apparel .....	12.923	262.068	270.729	13.9	3.3	2.0	2.7	1.5
Nondurables .....	30.266	217.791	221.504	7.3	1.7	1.1	1.4	.9
Services less rent of shelter <sup>4</sup> .....	28.382	288.077	288.612	2.0	.2	.4	.2	.3
Services less medical care services .....	54.994	251.834	252.100	1.4	.1	.2	.1	.2
Energy .....	9.079	242.516	253.495	19.0	4.5	3.4	3.5	2.2
All items less energy .....	90.921	223.315	223.798	1.6	.2	.3	.2	.2
All items less food and energy .....	77.179	223.690	224.118	1.3	.2	.2	.1	.2
Commodities less food and energy commodities .....	20.882	144.632	145.214	.7	.4	.2	.1	.4
Energy commodities .....	5.388	307.589	329.419	32.7	7.1	4.8	5.5	3.1
Services less energy services .....	56.297	271.468	271.775	1.6	.1	.2	.2	.1
Purchasing power of the consumer dollar (1982-84=\$1.00) .....	-	\$ .447	\$ .445	-	-	-	-	-
Purchasing power of the consumer dollar (1967=\$1.00) .....	-	\$ .149	\$ .148	-	-	-	-	-

<sup>1</sup> Not seasonally adjusted.

<sup>2</sup> Indexes on a December 1997=100 base.

<sup>3</sup> This index series was calculated using a Laspeyres estimator. All other item stratum index series were calculated using a geometric means estimator.

<sup>4</sup> Indexes on a December 1982=100 base.

<sup>5</sup> Indexes on a December 1988=100 base.

<sup>6</sup> Indexes on a December 2007=100 base.

- Data not available.

NOTE: Index applies to a month as a whole, not to any specific date.

**Table 2. Consumer Price Index for All Urban Consumers (CPI-U): Seasonally adjusted U.S. city average, by expenditure category and commodity and service group**

(1982-84=100, unless otherwise noted)

CPI-U	Seasonally adjusted indexes				Seasonally adjusted annual rate percent change for					
					3 months ended—			6 months ended—		
	Jan. 2011	Feb. 2011	Mar. 2011	Apr. 2011	July 2010	Oct. 2010	Jan. 2011	Apr. 2011	Oct. 2010	Apr. 2011
<b>Expenditure category</b>										
All items .....	221.062	222.270	223.490	224.433	0.0	2.5	3.9	6.2	1.2	5.1
Food and beverages .....	222.602	223.779	225.345	226.330	.1	2.3	3.1	6.9	1.2	5.0
Food .....	222.314	223.544	225.228	226.231	-.1	2.4	3.2	7.2	1.1	5.2
Food at home .....	218.983	220.800	223.219	224.373	-7.7	2.1	4.5	10.2	.7	7.3
Cereals and bakery products .....	253.956	254.037	255.395	255.751	-2.1	2.1	6.1	2.9	.0	4.5
Meats, poultry, fish, and eggs .....	213.942	216.444	218.803	221.181	7.2	4.9	4.4	14.2	6.0	9.2
Dairy and related products <sup>1</sup> .....	202.349	203.510	206.161	209.707	3.5	4.7	2.1	15.4	4.1	8.5
Fruits and vegetables .....	278.517	284.574	289.890	286.716	-13.8	2.1	12.1	12.3	-6.2	12.2
Nonalcoholic beverages and beverage materials .....	162.636	162.958	164.340	166.375	-2.0	-1.3	4.0	9.5	-1.7	6.7
Other food at home .....	191.580	192.706	194.602	195.207	.2	.2	.9	7.8	.2	4.3
Sugar and sweets <sup>1</sup> .....	202.648	204.168	205.505	203.783	.8	3.6	-.6	2.3	2.2	.8
Fats and oils .....	206.878	208.833	214.596	216.297	-.8	4.7	10.2	19.5	1.9	14.7
Other foods .....	203.922	204.936	206.493	207.448	.2	-1.2	-.2	7.1	-.5	3.4
Other miscellaneous foods <sup>1 2</sup> .....	120.930	121.438	122.665	123.769	-.8	-1.2	-2.5	9.7	-1.0	3.4
Food away from home <sup>1</sup> .....	228.181	228.606	229.282	230.082	.8	2.8	1.6	3.4	1.8	2.5
Other food away from home <sup>1 2</sup> .....	160.643	161.836	161.886	162.218	1.5	1.8	1.5	4.0	1.6	2.7
Alcoholic beverages .....	224.951	225.415	225.409	226.141	2.3	1.3	1.1	2.1	1.8	1.6
Housing .....	216.983	217.561	217.852	218.192	.1	.4	1.1	2.2	.3	1.7
Shelter .....	249.523	249.867	250.102	250.278	1.0	.4	1.2	1.2	.7	1.2
Rent of primary residence <sup>3</sup> .....	251.249	251.607	251.930	252.102	.7	.7	2.3	1.4	.7	1.8
Lodging away from home <sup>2</sup> .....	132.892	132.915	133.920	133.885	16.5	-6.9	-4.2	3.0	4.1	-7.7
Owners' equivalent rent of residences <sup>3 4</sup> .....	257.659	258.016	258.204	258.377	.6	.6	1.2	1.1	.6	1.2
Owners' equivalent rent of primary residence <sup>3 4</sup> .....	257.648	258.003	258.196	258.364	.6	.6	1.2	1.1	.6	1.2
Tenants' and household insurance <sup>1 2</sup> .....	126.192	126.529	125.863	126.574	3.2	4.0	-2.9	1.2	3.6	-.8
Fuels and utilities .....	215.607	218.231	219.480	220.834	-3.2	2.2	1.8	10.1	-.6	5.8
Household energy .....	189.553	192.096	193.211	194.539	-5.2	1.5	.9	10.9	-1.9	5.8
Fuel oil and other fuels <sup>1</sup> .....	314.130	326.919	341.884	348.657	-22.1	25.6	66.5	51.8	-1.1	58.9
Energy services <sup>3</sup> .....	191.114	193.224	193.654	194.751	-3.8	.0	-3.2	7.8	-1.9	2.2
Water and sewer and trash collection services <sup>2</sup> .....	175.400	176.725	177.684	178.316	4.6	4.5	5.2	6.8	4.6	6.0
Household furnishings and operations .....	124.382	124.493	124.375	124.661	-1.9	-1.5	-.9	.9	-1.7	.0
Household operations <sup>1 2</sup> .....	151.189	151.358	150.541	151.338	1.8	-1.6	2.8	.4	.1	1.6
Apparel .....	120.456	119.384	118.770	118.951	3.7	-3.0	4.9	-4.9	.3	-.1
Men's and boys' apparel .....	112.414	111.408	110.648	110.613	7.2	-2.7	1.6	-6.3	2.1	-2.4
Women's and girls' apparel .....	107.957	106.622	105.708	105.993	3.2	-5.6	7.7	-7.1	-1.3	.1
Infants' and toddlers' apparel .....	111.436	109.634	109.796	110.154	10.1	-15.9	-2.1	-4.5	-3.8	-3.3
Footwear .....	128.166	127.691	127.476	126.702	1.8	1.5	-1.3	-4.5	1.6	-2.9
Transportation .....	203.622	207.433	212.001	215.016	-3.5	12.1	15.4	24.3	4.0	19.8
Private transportation .....	198.730	202.446	207.045	210.173	-3.8	12.9	14.9	25.1	4.3	19.9
New and used motor vehicles <sup>2</sup> .....	97.000	97.490	98.249	99.051	1.8	-.1	-1.3	8.7	.9	3.6
New vehicles .....	137.752	139.065	140.078	141.092	.8	.7	-1.6	10.1	.7	4.1
Used cars and trucks .....	143.664	143.847	144.958	146.704	6.1	-.4	-.9	8.7	2.8	3.8
Motor fuel .....	277.665	291.093	307.358	317.215	-16.8	44.6	53.5	70.3	9.7	61.7
Gasoline (all types) .....	277.129	290.027	306.128	316.333	-17.6	46.1	53.6	69.8	9.7	61.5
Motor vehicle parts and equipment <sup>1</sup> .....	140.487	140.912	140.686	141.590	4.6	3.1	6.5	3.2	3.9	4.8
Motor vehicle maintenance and repair <sup>1</sup> .....	250.726	250.851	250.820	251.458	.3	3.7	1.5	1.2	2.0	1.3
Public transportation .....	264.616	269.625	273.100	273.781	.2	1.9	21.7	14.6	1.1	18.1
Medical care .....	393.843	395.615	396.364	397.793	1.4	4.0	2.0	4.1	2.7	3.0
Medical care commodities <sup>1</sup> .....	318.929	321.186	322.691	324.241	-.5	2.5	3.7	6.8	1.0	5.2
Medical care services .....	417.004	418.529	418.937	420.282	2.0	4.5	1.4	3.2	3.3	2.3
Professional services .....	331.974	333.483	333.993	334.196	2.9	2.6	1.5	2.7	2.8	2.1

See footnotes at end of table.

**Table 2. Consumer Price Index for All Urban Consumers (CPI-U): Seasonally adjusted U.S. city average, by expenditure category and commodity and service group-Continued**

(1982-84=100, unless otherwise noted)

CPI-U	Seasonally adjusted indexes				Seasonally adjusted annual rate percent change for					
					3 months ended—			6 months ended—		
	Jan. 2011	Feb. 2011	Mar. 2011	Apr. 2011	July 2010	Oct. 2010	Jan. 2011	Apr. 2011	Oct. 2010	Apr. 2011
<b>Expenditure category</b>										
Hospital and related services .....	624.854	628.137	629.315	633.287	3.4	10.0	2.7	5.5	6.7	4.1
Recreation <sup>2</sup> .....	112.939	113.242	113.228	113.183	-2	-1.8	-.3	.9	-1.0	-.3
Video and audio <sup>2</sup> .....	97.904	98.395	98.466	98.437	-2.3	-1.3	-3.1	2.2	-1.8	-.5
Education and communication <sup>2</sup> .....	130.548	130.759	130.898	131.012	1.9	-.1	.9	1.4	.9	1.2
Education <sup>2</sup> .....	203.738	204.456	205.133	205.707	4.7	.6	6.1	3.9	2.6	5.0
Educational books and supplies .....	520.236	519.288	522.344	523.912	4.2	.2	10.0	2.9	2.2	6.3
Tuition, other school fees, and childcare .....	585.549	587.834	589.674	591.314	4.8	.6	5.9	4.0	2.7	4.9
Communication <sup>2</sup> .....	83.760	83.746	83.656	83.576	-6	-8	-3.7	-.9	-.7	-2.3
Information and information processing <sup>2</sup> .....	80.399	80.383	80.290	80.201	-7	-8	-4.8	-1.0	-.7	-2.9
Telephone services <sup>1 2</sup> .....	101.412	101.316	101.258	101.191	.3	-.1	-4.0	-.9	.1	-2.5
Information technology, hardware and services <sup>5</sup> .....	9.171	9.189	9.163	9.140	-3.3	-3.0	-7.0	-1.3	-3.2	-4.2
Personal computers and peripheral equipment <sup>6</sup> .....	72.662	72.289	71.142	71.002	-4.6	-2.3	-15.6	-8.8	-3.4	-12.3
Other goods and services .....	385.031	385.532	385.215	385.600	5.4	-.6	2.4	.6	2.3	1.5
Tobacco and smoking products <sup>1</sup> .....	828.079	829.535	830.693	827.287	16.8	1.1	3.2	-.4	8.7	1.4
Personal care .....	207.547	207.783	207.451	208.030	1.8	-1.2	2.2	.9	.3	1.6
Personal care products <sup>1</sup> .....	160.920	161.325	160.981	161.418	-.6	-3.5	2.4	1.2	-2.0	1.8
Personal care services <sup>1</sup> .....	229.933	230.177	230.034	230.380	1.5	-2.0	1.0	.8	-.3	.9
Miscellaneous personal services .....	358.181	358.894	359.233	360.622	2.7	1.7	2.2	2.8	2.2	2.5
<b>Commodity and service group</b>										
Commodities .....	178.833	180.549	182.627	184.090	-1.9	5.0	7.6	12.3	1.5	9.9
Food and beverages .....	222.602	223.779	225.345	226.330	.1	2.3	3.1	6.9	1.2	5.0
Commodities less food and beverages .....	155.178	157.054	159.267	160.874	-3.0	6.6	10.3	15.5	1.7	12.9
Nondurables less food and beverages .....	200.839	204.142	207.789	210.177	-3.9	10.7	20.7	19.9	3.1	20.3
Apparel .....	120.456	119.384	118.770	118.951	3.7	-3.0	4.9	-4.9	.3	-.1
Nondurables less food, beverages, and apparel .....	255.448	260.797	268.329	272.442	-7.0	16.5	24.8	29.4	4.1	27.1
Durables .....	110.557	111.024	111.490	112.128	.5	-1.2	-2.1	5.8	-.3	1.8
Services .....	263.034	263.745	264.161	264.561	1.2	.9	1.5	2.3	1.0	1.9
Rent of shelter <sup>4</sup> .....	260.471	260.509	260.389	260.645	.2	1.5	1.9	.3	.9	1.1
Tenants' and household insurance <sup>1 2</sup> .....	126.192	126.529	125.863	126.574	3.2	4.0	-2.9	1.2	3.6	-.8
Energy services <sup>3</sup> .....	191.114	193.224	193.654	194.751	-3.8	.0	-3.2	7.8	-1.9	2.2
Water and sewer and trash collection services <sup>2</sup> .....	175.400	176.725	177.684	178.316	4.6	4.5	5.2	6.8	4.6	6.0
Household operations <sup>1 2</sup> .....	151.189	151.358	150.541	151.338	1.8	-1.6	2.8	.4	.1	1.6
Transportation services .....	264.832	266.061	267.523	268.096	1.5	2.7	5.0	5.0	2.1	5.0
Medical care services .....	417.004	418.529	418.937	420.282	2.0	4.5	1.4	3.2	3.3	2.3
Other services .....	311.610	312.190	312.626	312.898	2.6	-.4	1.5	1.7	1.1	1.6
<b>Special indexes</b>										
All items less food .....	220.885	222.091	223.237	224.171	.0	2.5	4.0	6.1	1.3	5.0
All items less shelter .....	212.429	213.995	215.619	216.878	-.5	3.5	5.1	8.6	1.5	6.9
All items less medical care .....	212.578	213.755	214.982	215.899	-.1	2.4	4.0	6.4	1.1	5.2
Commodities less food .....	157.709	159.553	161.713	163.303	-2.8	6.4	9.9	15.0	1.7	12.4
Nondurables less food .....	202.374	205.455	208.940	211.335	-3.9	10.2	19.5	18.9	2.9	19.2
Nondurables less food and apparel .....	251.499	256.414	263.245	267.120	-6.3	14.9	22.9	27.3	3.8	25.1
Nondurables .....	212.320	214.660	217.689	219.744	-2.8	6.4	11.8	14.7	1.7	13.2
Services less rent of shelter <sup>4</sup> .....	287.061	288.270	288.851	289.660	1.0	1.5	1.9	3.7	1.3	2.8
Services less medical care services .....	251.378	251.810	252.011	252.413	.5	1.2	2.0	1.7	.9	1.8
Energy .....	229.915	237.620	245.941	251.319	-11.6	22.8	27.7	42.8	4.2	35.0
All items less energy .....	221.922	222.483	222.992	223.494	1.2	.7	1.7	2.9	1.0	2.3
All items less food and energy .....	222.587	223.029	223.331	223.745	1.4	.4	1.4	2.1	.9	1.8
Commodities less food and energy commodities .....	143.571	143.793	143.917	144.423	1.0	-.9	.4	2.4	.1	1.4
Energy commodities .....	281.416	294.905	311.218	320.989	-17.1	43.5	54.2	69.3	9.0	61.6
Services less energy services .....	270.374	270.955	271.371	271.707	1.6	.9	1.8	2.0	1.2	1.9

<sup>1</sup> Not seasonally adjusted.

<sup>2</sup> Indexes on a December 1997=100 base.

<sup>3</sup> This index series was calculated using a Laspeyres estimator. All other item stratum index series were calculated using a geometric means estimator.

<sup>4</sup> Indexes on a December 1982=100 base.

<sup>5</sup> Indexes on a December 1988=100 base.

<sup>6</sup> Indexes on a December 2007=100 base.

NOTE: Index applies to a month as a whole, not to any specific date.

**Table 3. Consumer Price Index for All Urban Consumers (CPI-U): Selected areas, all items index**

(1982-84=100, unless otherwise noted)

CPI-U	Pricing schedule 1	All items									
		Indexes				Percent change to Apr.2011 from—			Percent change to Mar.2011 from—		
		Jan. 2011	Feb. 2011	Mar. 2011	Apr. 2011	Apr. 2010	Feb. 2011	Mar. 2011	Mar. 2010	Jan. 2011	Feb. 2011
U.S. city average .....	M	220.223	221.309	223.467	224.906	3.2	1.6	0.6	2.7	1.5	1.0
<b>Region and area size<sup>2</sup></b>											
Northeast urban .....	M	235.969	237.110	239.074	240.267	2.8	1.3	.5	2.5	1.3	.8
Size A - More than 1,500,000 .....	M	237.564	238.798	240.599	241.626	2.6	1.2	.4	2.4	1.3	.8
Size B/C - 50,000 to 1,500,000 <sup>3</sup> .....	M	141.001	141.547	143.001	143.987	3.5	1.7	.7	3.0	1.4	1.0
Midwest urban .....	M	210.388	211.090	212.954	214.535	3.3	1.6	.7	2.7	1.2	.9
Size A - More than 1,500,000 .....	M	210.928	211.503	213.449	214.878	3.2	1.6	.7	2.6	1.2	.9
Size B/C - 50,000 to 1,500,000 <sup>3</sup> .....	M	135.061	135.665	136.834	138.005	3.4	1.7	.9	2.8	1.3	.9
Size D - Nonmetropolitan (less than 50,000) .....	M	207.551	208.156	209.713	211.314	3.4	1.5	.8	2.7	1.0	.7
South urban .....	M	213.589	214.735	217.214	218.820	3.4	1.9	.7	2.8	1.7	1.2
Size A - More than 1,500,000 .....	M	215.127	216.145	218.391	219.944	3.2	1.8	.7	2.7	1.5	1.0
Size B/C - 50,000 to 1,500,000 <sup>3</sup> .....	M	135.925	136.625	138.211	139.177	3.4	1.9	.7	2.9	1.7	1.2
Size D - Nonmetropolitan (less than 50,000) .....	M	216.750	218.772	222.275	224.716	4.7	2.7	1.1	3.4	2.5	1.6
West urban .....	M	223.149	224.431	226.558	227.837	3.0	1.5	.6	2.6	1.5	.9
Size A - More than 1,500,000 .....	M	227.281	228.444	230.707	231.808	3.0	1.5	.5	2.7	1.5	1.0
Size B/C - 50,000 to 1,500,000 <sup>3</sup> .....	M	134.917	135.826	137.200	138.174	3.0	1.7	.7	2.5	1.7	1.0
<b>Size classes</b>											
A <sup>4</sup> .....	M	201.059	201.974	203.833	204.963	3.0	1.5	.6	2.6	1.4	.9
B/C <sup>3</sup> .....	M	136.260	136.960	138.404	139.413	3.3	1.8	.7	2.8	1.6	1.1
D .....	M	213.417	214.862	216.988	218.920	3.8	1.9	.9	2.8	1.7	1.0
<b>Selected local areas<sup>5</sup></b>											
Chicago-Gary-Kenosha, IL-IN-WI .....	M	215.155	216.192	217.880	218.762	2.7	1.2	.4	2.3	1.3	.8
Los Angeles-Riverside-Orange County, CA ...	M	228.652	229.729	232.241	233.319	3.3	1.6	.5	3.0	1.6	1.1
New York-Northern N.J.-Long Island, NY-NJ-CT-PA .....	M	242.639	243.832	245.617	246.489	2.5	1.1	.4	2.3	1.2	.7
Boston-Brockton-Nashua, MA-NH-ME-CT .....	1	239.814	-	242.787	-	-	-	-	2.0	1.2	-
Cleveland-Akron, OH .....	1	207.587	-	209.372	-	-	-	-	2.8	.9	-
Dallas-Fort Worth, TX .....	1	203.199	-	206.967	-	-	-	-	2.5	1.9	-
Washington-Baltimore, DC-MD-VA-WV <sup>6</sup> .....	1	144.327	-	146.044	-	-	-	-	3.0	1.2	-
Atlanta, GA .....	2	-	205.744	-	209.215	2.5	1.7	-	-	-	-
Detroit-Ann Arbor-Flint, MI .....	2	-	206.816	-	211.673	3.1	2.3	-	-	-	-
Houston-Galveston-Brazoria, TX .....	2	-	197.224	-	201.624	3.9	2.2	-	-	-	-
Miami-Fort Lauderdale, FL .....	2	-	227.451	-	231.503	4.0	1.8	-	-	-	-
Philadelphia-Wilmington-Atlantic City, PA-NJ-DE-MD .....	2	-	230.878	-	233.143	2.5	1.0	-	-	-	-
San Francisco-Oakland-San Jose, CA .....	2	-	229.981	-	234.121	2.8	1.8	-	-	-	-
Seattle-Tacoma-Bremerton, WA .....	2	-	229.482	-	231.314	2.1	.8	-	-	-	-

<sup>1</sup> Foods, fuels, and several other items priced every month in all areas; most other goods and services priced as indicated:

M - Every month.

1 - January, March, May, July, September, and November.

2 - February, April, June, August, October, and December.

<sup>2</sup> Regions defined as the four Census regions. See technical notes.

<sup>3</sup> Indexes on a December 1996=100 base.

<sup>4</sup> Indexes on a December 1986=100 base.

<sup>5</sup> In addition, the following metropolitan areas are published semiannually and appear in Tables 34 and 39 of the January and July issues of the CPI Detailed Report: Anchorage, AK; Cincinnati-Hamilton, OH-KY-IN; Denver-Boulder-Greeley, CO; Honolulu, HI; Kansas City, MO-KS; Milwaukee-Racine, WI; Minneapolis-St. Paul, MN-WI; Phoenix-Mesa, AZ; Pittsburgh, PA; Portland-Salem, OR-WA; St. Louis, MO-IL; San Diego, CA;

Tampa-St. Petersburg-Clearwater, FL.

<sup>6</sup> Indexes on a November 1996=100 base.

- Data not available.

NOTE: Local area indexes are byproducts of the national CPI program. Each local index has a smaller sample size than the national index and is, therefore, subject to substantially more sampling and other measurement error. As a result, local area indexes show greater volatility than the national index, although their long-term trends are similar. Therefore, the Bureau of Labor Statistics strongly urges users to consider adopting the national average CPI for use in their escalator clauses.

NOTE: Index applies to a month as a whole, not to any specific date.

**Table 4. Consumer Price Index for Urban Wage Earners and Clerical Workers (CPI-W): U.S. city average, by expenditure category and commodity and service group**

(1982-84=100, unless otherwise noted)

CPI-W Expenditure category	Relative importance, December 2010	Unadjusted indexes		Unadjusted percent change to Apr. 2011 from—		Seasonally adjusted percent change from—		
		Mar. 2011	Apr. 2011	Apr. 2010	Mar. 2011	Jan. to Feb.	Feb. to Mar.	Mar. to Apr.
All items .....	100.000	220.024	221.743	3.6	0.8	0.6	0.6	0.5
All items (1967=100) .....	-	655.385	660.503	-	-	-	-	-
Food and beverages .....	16.401	224.825	225.667	3.2	.4	.5	.7	.5
Food .....	15.315	224.577	225.439	3.3	.4	.6	.8	.5
Food at home .....	8.906	222.391	223.245	4.1	.4	.9	1.1	.5
Cereals and bakery products .....	1.236	256.227	256.912	2.3	.3	.1	.6	.2
Meats, poultry, fish, and eggs .....	2.227	218.848	220.753	7.7	.9	1.2	1.2	1.1
Dairy and related products <sup>1</sup> .....	.917	205.163	208.951	6.6	1.8	.6	1.4	1.8
Fruits and vegetables .....	1.219	288.168	284.147	2.7	-1.4	2.4	2.0	-1.3
Nonalcoholic beverages and beverage materials .....	1.091	164.583	165.553	2.4	.6	.1	.9	1.2
Other food at home .....	2.217	193.787	194.281	2.1	.3	.6	.9	.3
Sugar and sweets <sup>1</sup> .....	.324	204.408	202.613	1.5	-9	.8	.5	-9
Fats and oils .....	.258	214.457	214.363	8.0	.0	1.0	2.6	.7
Other foods .....	1.635	206.624	207.711	1.3	.5	.5	.7	.4
Other miscellaneous foods <sup>1 2</sup> .....	.463	122.850	123.797	.9	.8	.4	1.0	.8
Food away from home <sup>1</sup> .....	6.409	229.293	230.174	2.1	.4	.1	.3	.4
Other food away from home <sup>1 2</sup> .....	.326	162.850	163.275	2.6	.3	.7	.1	.3
Alcoholic beverages .....	1.086	227.022	227.552	1.9	.2	.2	.2	.4
Housing .....	39.228	214.323	214.523	1.0	.1	.3	.1	.2
Shelter .....	29.811	244.270	244.420	1.0	.1	.2	.1	.1
Rent of primary residence <sup>3</sup> .....	8.396	250.445	250.579	1.3	.1	.1	.1	.1
Lodging away from home <sup>2</sup> .....	.436	138.131	138.699	2.1	.4	.2	.8	.4
Owners' equivalent rent of residences <sup>3 4</sup> .....	20.672	234.018	234.133	.9	.0	.2	.1	.1
Owners' equivalent rent of primary residence <sup>3 4</sup> .....	19.942	234.015	234.127	.9	.0	.2	.1	.1
Tenants' and household insurance <sup>1 2</sup> .....	.306	126.914	127.654	1.4	.6	.3	-9	.6
Fuels and utilities .....	5.633	214.774	215.338	2.4	.3	1.0	.5	.6
Household energy .....	4.476	187.561	188.078	1.7	.3	1.1	.5	.7
Fuel oil and other fuels <sup>1</sup> .....	.301	341.440	347.371	23.7	1.7	3.7	4.4	1.7
Energy services <sup>3</sup> .....	4.175	188.985	189.281	.2	.2	.9	.2	.6
Water and sewer and trash collection services <sup>2</sup> .....	1.157	178.016	178.392	5.1	.2	.7	.5	.4
Household furnishings and operations .....	3.784	120.765	120.873	-9	.1	.0	.0	.2
Household operations <sup>1 2</sup> .....	.364	152.965	153.923	1.0	.6	.1	-5	.6
Apparel .....	3.668	120.091	121.140	-1	.9	-7	-6	.3
Men's and boys' apparel .....	.921	112.360	113.477	-1	1.0	-8	-1.2	.2
Women's and girls' apparel .....	1.502	108.551	109.589	-2	1.0	-1.0	-1.0	.8
Infants' and toddlers' apparel .....	.280	114.446	115.274	-4.0	.7	-1.7	.1	.3
Footwear .....	.750	128.077	128.602	-4	.4	-2	.0	-4
Transportation .....	19.418	211.774	218.352	12.9	3.1	2.0	2.4	1.6
Private transportation .....	18.631	208.361	215.044	13.1	3.2	2.0	2.5	1.6
New and used motor vehicles <sup>2</sup> .....	6.914	97.405	98.172	2.5	.8	.5	.8	.9
New vehicles .....	3.320	141.899	142.475	2.4	.4	1.0	.8	.7
Used cars and trucks .....	3.003	145.014	146.907	3.3	1.3	.1	.8	1.2
Motor fuel .....	6.470	305.066	327.663	33.2	7.4	4.8	5.6	3.2
Gasoline (all types) .....	6.193	304.224	327.095	33.2	7.5	4.7	5.6	3.3
Motor vehicle parts and equipment <sup>1</sup> .....	.479	140.693	141.505	4.1	.6	.3	.0	.6
Motor vehicle maintenance and repair <sup>1</sup> .....	1.184	253.391	253.990	1.6	.2	.1	-1	.2
Public transportation .....	.787	266.726	268.501	8.9	.7	2.0	1.1	.3
Medical care .....	5.355	399.516	400.683	3.0	.3	.5	.2	.4
Medical care commodities <sup>1</sup> .....	1.318	314.190	315.798	3.2	.5	.7	.5	.5
Medical care services .....	4.038	424.516	425.450	2.9	.2	.4	.1	.3
Professional services .....	2.220	338.225	338.558	2.5	.1	.4	.1	.1

See footnotes at end of table.

**Table 4. Consumer Price Index for Urban Wage Earners and Clerical Workers (CPI-W): U.S. city average, by expenditure category and commodity and service group-Continued**

(1982-84=100, unless otherwise noted)

CPI-W	Relative importance, December 2010	Unadjusted indexes		Unadjusted percent change to Apr. 2011 from—		Seasonally adjusted percent change from—		
		Mar. 2011	Apr. 2011	Apr. 2010	Mar. 2011	Jan. to Feb.	Feb. to Mar.	Mar. to Apr.
<b>Expenditure category</b>								
Hospital and related services .....	1.414	637.216	640.223	5.7	0.5	0.6	0.2	0.5
Recreation <sup>2</sup> .....	5.862	109.848	109.933	-.4	.1	.4	.1	.0
Video and audio <sup>2</sup> .....	1.959	99.398	99.523	-1.0	.1	.5	.1	-.1
Education and communication <sup>2</sup> .....	6.118	125.047	124.993	.3	.0	.1	.1	.0
Education <sup>2</sup> .....	2.380	201.588	201.611	3.8	.0	.3	.3	.3
Educational books and supplies .....	.199	527.623	526.990	4.5	-.1	.1	.4	.3
Tuition, other school fees, and childcare .....	2.181	566.335	566.469	3.7	.0	.3	.3	.3
Communication <sup>2</sup> .....	3.738	86.124	86.057	-1.7	-.1	.0	-.1	-.1
Information and information processing <sup>2</sup> .....	3.605	83.793	83.719	-2.0	-.1	-.1	-.1	-.1
Telephone services <sup>1 2</sup> .....	2.823	100.701	100.643	-1.5	-.1	-.1	-.1	-.1
Information technology, hardware and services <sup>5</sup> .....	.782	9.729	9.710	-3.7	-.2	.2	-.2	-.3
Personal computers and peripheral equipment <sup>6</sup> .....	.208	71.404	71.220	-9.2	-.3	-.5	-1.8	-.5
Other goods and services .....	3.950	415.318	415.578	2.4	.1	.2	-.1	.0
Tobacco and smoking products <sup>1</sup> .....	1.450	835.368	832.003	4.9	-.4	.2	.1	-.4
Personal care .....	2.500	205.738	206.422	1.0	.3	.2	-.2	.2
Personal care products <sup>1</sup> .....	.717	161.667	162.088	.3	.3	.3	-.2	.3
Personal care services <sup>1</sup> .....	.572	230.252	230.597	.3	.1	.1	-.1	.1
Miscellaneous personal services .....	1.027	360.881	362.774	2.3	.5	.2	.0	.4
<b>Commodity and service group</b>								
Commodities .....	43.898	186.832	189.816	6.5	1.6	1.1	1.3	.9
Food and beverages .....	16.401	224.825	225.667	3.2	.4	.5	.7	.5
Commodities less food and beverages .....	27.497	165.647	169.461	8.4	2.3	1.4	1.6	1.1
Nondurables less food and beverages .....	17.244	219.775	226.985	12.9	3.3	1.8	2.1	1.3
Apparel .....	3.668	120.091	121.140	-.1	.9	-.7	-.6	.3
Nondurables less food, beverages, and apparel .....	13.576	286.361	297.497	16.6	3.9	2.0	3.4	1.5
Durables .....	10.253	113.063	113.678	1.1	.5	.5	.5	.6
Services .....	56.102	259.108	259.419	1.4	.1	.3	.1	.2
Rent of shelter <sup>4</sup> .....	29.504	235.413	235.544	1.0	.1	.1	.0	.1
Tenants' and household insurance <sup>1 2</sup> .....	.306	126.914	127.654	1.4	.6	.3	-.9	.6
Energy services <sup>3</sup> .....	4.175	188.985	189.281	.2	.2	.9	.2	.6
Water and sewer and trash collection services <sup>2</sup> .....	1.157	178.016	178.392	5.1	.2	.7	.5	.4
Household operations <sup>1 2</sup> .....	.364	152.965	153.923	1.0	.6	.1	-.5	.6
Transportation services .....	5.994	266.383	267.258	3.4	.3	.5	.4	.3
Medical care services .....	4.038	424.516	425.450	2.9	.2	.4	.1	.3
Other services .....	10.563	298.010	298.262	1.0	.1	.2	.1	.1
<b>Special indexes</b>								
All items less food .....	84.685	219.027	220.894	3.7	.9	.6	.6	.5
All items less shelter .....	70.189	213.549	215.853	4.8	1.1	.8	.9	.7
All items less medical care .....	94.645	212.722	214.442	3.7	.8	.6	.7	.5
Commodities less food .....	28.583	167.826	171.564	8.2	2.2	1.3	1.6	1.1
Nondurables less food .....	18.329	220.431	227.290	12.2	3.1	1.7	2.0	1.3
Nondurables less food and apparel .....	14.662	280.056	290.247	15.5	3.6	1.9	3.2	1.4
Nondurables .....	33.644	223.402	227.661	8.1	1.9	1.2	1.6	1.0
Services less rent of shelter <sup>4</sup> .....	26.598	254.057	254.540	1.9	.2	.4	.2	.3
Services less medical care services .....	52.065	247.622	247.899	1.3	.1	.2	.1	.2
Energy .....	10.946	244.773	256.400	20.0	4.8	3.4	3.7	2.3
All items less energy .....	89.054	218.011	218.537	1.7	.2	.3	.2	.3
All items less food and energy .....	73.739	217.067	217.525	1.3	.2	.2	.1	.2
Commodities less food and energy commodities .....	21.812	146.835	147.472	.9	.4	.2	.1	.4
Energy commodities .....	6.771	308.083	330.157	32.8	7.2	4.8	5.6	3.1
Services less energy services .....	51.927	266.766	267.077	1.5	.1	.2	.1	.1
Purchasing power of the consumer dollar (1982-84=\$1.00) .....	-	\$ .454	\$ .451	-	-	-	-	-
Purchasing power of the consumer dollar (1967=\$1.00) .....	-	\$ .153	\$ .151	-	-	-	-	-

<sup>1</sup> Not seasonally adjusted.

<sup>2</sup> Indexes on a December 1997=100 base.

<sup>3</sup> This index series was calculated using a Laspeyres estimator. All other item stratum index series were calculated using a geometric means estimator.

<sup>4</sup> Indexes on a December 1984=100 base

<sup>5</sup> Indexes on a December 1988=100 base.

<sup>6</sup> Indexes on a December 2007=100 base.

- Data not available.

NOTE: Index applies to a month as a whole, not to any specific date.

**Table 5. Consumer Price Index for Urban Wage Earners and Clerical Workers (CPI-W): Seasonally adjusted U.S. city average, by expenditure category and commodity and service group**

(1982-84=100, unless otherwise noted)

CPI-W	Seasonally adjusted indexes				Seasonally adjusted annual rate percent change for					
					3 months ended—			6 months ended—		
	Jan. 2011	Feb. 2011	Mar. 2011	Apr. 2011	July 2010	Oct. 2010	Jan. 2011	Apr. 2011	Oct. 2010	Apr. 2011
<b>Expenditure category</b>										
All items .....	217.344	218.702	220.122	221.212	-0.2	3.0	4.4	7.3	1.4	5.9
Food and beverages .....	221.853	223.029	224.691	225.708	.2	2.3	3.2	7.1	1.3	5.1
Food .....	221.486	222.716	224.464	225.485	.0	2.4	3.4	7.4	1.2	5.4
Food at home .....	217.871	219.728	222.200	223.322	-4	1.9	4.7	10.4	.8	7.5
Cereals and bakery products .....	254.540	254.751	256.158	256.620	-2.1	2.3	6.1	3.3	.0	4.7
Meats, poultry, fish, and eggs .....	213.732	216.300	218.838	221.143	7.5	4.9	4.3	14.6	6.2	9.3
Dairy and related products <sup>1</sup> .....	201.170	202.335	205.163	208.951	3.8	4.3	2.6	16.4	4.1	9.3
Fruits and vegetables .....	275.896	282.396	288.166	284.305	-14.3	2.2	12.6	12.8	-6.4	12.7
Nonalcoholic beverages and beverage materials .....	162.150	162.352	163.753	165.778	-1.4	-2.1	4.2	9.3	-1.8	6.7
Other food at home .....	190.804	191.912	193.640	194.133	.2	-2	1.3	7.2	.0	4.2
Sugar and sweets <sup>1</sup> .....	201.824	203.373	204.408	202.613	.4	3.3	.7	1.6	1.8	1.1
Fats and oils .....	207.171	209.238	214.678	216.271	.0	3.9	10.4	18.8	1.9	14.5
Other foods .....	203.965	204.938	206.374	207.193	.3	-1.4	.1	6.5	-6	3.2
Other miscellaneous foods <sup>1 2</sup> .....	121.161	121.605	122.850	123.797	-1.6	-1.3	-2.1	9.0	-1.5	3.3
Food away from home <sup>1</sup> .....	228.279	228.596	229.293	230.174	.6	3.1	1.5	3.4	1.8	2.4
Other food away from home <sup>1 2</sup> .....	161.635	162.728	162.850	163.275	1.6	3.2	1.6	4.1	2.4	2.9
Alcoholic beverages .....	225.786	226.181	226.591	227.525	2.8	1.2	.6	3.1	2.0	1.8
Housing .....	213.712	214.274	214.579	214.943	-.1	.5	1.3	2.3	.2	1.8
Shelter .....	243.522	243.891	244.098	244.287	.8	.5	1.5	1.3	.6	1.4
Rent of primary residence <sup>3</sup> .....	249.556	249.881	250.220	250.444	.6	.5	2.5	1.4	.5	2.0
Lodging away from home <sup>2</sup> .....	134.166	134.483	135.526	136.073	17.5	-8.0	-4.8	5.8	4.0	.4
Owners' equivalent rent of residences <sup>3 4</sup> .....	233.453	233.818	233.967	234.102	.5	.6	1.2	1.1	.6	1.2
Owners' equivalent rent of primary residence <sup>3 4</sup> .....	233.452	233.819	233.963	234.097	.5	.6	1.2	1.1	.6	1.2
Tenants' and household insurance <sup>1 2</sup> .....	127.690	128.035	126.914	127.654	3.5	3.8	-1.4	-.1	3.6	-7
Fuels and utilities .....	214.330	216.540	217.690	219.052	-3.0	1.8	1.9	9.1	-6	5.4
Household energy .....	187.675	189.762	190.781	192.083	-4.8	1.2	1.1	9.7	-1.8	5.3
Fuel oil and other fuels <sup>1</sup> .....	315.348	326.950	341.440	347.371	-22.7	25.3	64.3	47.2	-1.6	55.6
Energy services <sup>3</sup> .....	190.284	192.035	192.493	193.645	-3.5	-2	-2.3	7.3	-1.9	2.4
Water and sewer and trash collection services <sup>2</sup> .....	175.803	177.057	177.954	178.669	4.4	4.3	5.0	6.7	4.3	5.8
Household furnishings and operations .....	120.479	120.458	120.458	120.697	-2.1	-1.6	-.7	.7	-1.8	.0
Household operations <sup>1 2</sup> .....	153.583	153.703	152.965	153.923	3.5	-2.3	2.3	.9	.5	1.6
Apparel .....	119.268	118.404	117.667	118.059	3.4	-3.5	3.8	-4.0	-.1	-2
Men's and boys' apparel .....	112.711	111.786	110.496	110.770	6.2	-3.2	4.0	-6.7	1.4	-1.5
Women's and girls' apparel .....	107.067	106.045	104.954	105.750	2.1	-3.6	6.0	-4.8	-.8	.5
Infants' and toddlers' apparel .....	114.477	112.572	112.693	112.979	9.2	-16.9	-1.4	-5.1	-4.8	-3.3
Footwear .....	127.404	127.194	127.212	126.695	2.1	-.5	-.9	-2.2	.8	-1.6
Transportation .....	203.697	207.843	212.833	216.214	-3.9	13.7	16.6	26.9	4.5	21.7
Private transportation .....	200.277	204.353	209.373	212.808	-4.1	14.2	16.5	27.5	4.6	21.9
New and used motor vehicles <sup>2</sup> .....	96.217	96.700	97.462	98.310	2.7	-.1	-1.2	9.0	1.3	3.8
New vehicles .....	138.691	140.067	141.132	142.121	.9	.4	-1.7	10.3	.6	4.1
Used cars and trucks .....	144.598	144.792	145.911	147.635	6.0	-.2	-.9	8.7	2.9	3.8
Motor fuel .....	278.809	292.327	308.827	318.736	-17.1	44.6	53.7	70.8	9.5	62.1
Gasoline (all types) .....	278.404	291.392	307.739	318.025	-17.4	45.2	53.9	70.3	9.5	61.9
Motor vehicle parts and equipment <sup>1</sup> .....	140.289	140.763	140.693	141.505	3.9	2.8	6.3	3.5	3.3	4.9
Motor vehicle maintenance and repair <sup>1</sup> .....	253.310	253.524	253.391	253.990	.4	3.9	1.2	1.1	2.2	1.1
Public transportation .....	260.787	266.108	268.996	269.886	.6	2.1	19.4	14.7	1.4	17.0
Medical care .....	395.575	397.444	398.099	399.544	1.7	4.0	2.2	4.1	2.8	3.1
Medical care commodities <sup>1</sup> .....	310.488	312.764	314.190	315.798	-.5	2.3	3.9	7.0	.9	5.4
Medical care services .....	420.595	422.224	422.517	423.843	2.5	4.5	1.7	3.1	3.5	2.4
Professional services .....	335.757	337.029	337.449	337.866	2.9	2.6	2.1	2.5	2.7	2.3

See footnotes at end of table.



**Table 5. Consumer Price Index for Urban Wage Earners and Clerical Workers (CPI-W): Seasonally adjusted U.S. city average, by expenditure category and commodity and service group-Continued**

(1982-84=100, unless otherwise noted)

CPI-W	Seasonally adjusted indexes				Seasonally adjusted annual rate percent change for					
					3 months ended—			6 months ended—		
	Jan. 2011	Feb. 2011	Mar. 2011	Apr. 2011	July 2010	Oct. 2010	Jan. 2011	Apr. 2011	Oct. 2010	Apr. 2011
<b>Expenditure category</b>										
Hospital and related services .....	627.317	630.894	632.454	635.892	4.3	9.9	3.3	5.6	7.1	4.4
Recreation <sup>2</sup> .....	109.345	109.742	109.798	109.747	-8	-1.5	-6	1.5	-1.1	.4
Video and audio <sup>2</sup> .....	98.510	99.020	99.167	99.080	-2.6	-9	-2.8	2.3	-1.8	-3
Education and communication <sup>2</sup> .....	124.959	125.081	125.167	125.225	1.3	-1	-6	.9	.6	.1
Education <sup>2</sup> .....	200.978	201.628	202.290	202.814	4.4	1.1	5.9	3.7	2.8	4.8
Educational books and supplies .....	524.385	524.817	526.817	528.629	3.0	.7	11.3	3.3	1.8	7.2
Tuition, other school fees, and childcare .....	564.783	566.738	568.569	569.997	4.6	1.2	5.4	3.7	2.9	4.6
Communication <sup>2</sup> .....	86.192	86.152	86.067	85.989	-5	-9	-4.5	-9	-7	-2.8
Information and information processing <sup>2</sup> .....	83.864	83.822	83.735	83.651	-5	-9	-5.3	-1.0	-7	-3.2
Telephone services <sup>1 2</sup> .....	100.882	100.768	100.701	100.643	.2	-2	-4.8	-9	.0	-2.9
Information technology, hardware and services <sup>5</sup> .....	9.704	9.722	9.699	9.674	-3.1	-3.4	-6.9	-1.2	-3.3	-4.1
Personal computers and peripheral equipment <sup>6</sup> .....	72.178	71.808	70.542	70.196	-5.5	-3.9	-16.2	-10.5	-4.7	-13.4
Other goods and services .....	414.533	415.238	414.916	414.900	6.8	-2	2.9	.4	3.2	1.6
Tobacco and smoking products <sup>1</sup> .....	832.904	834.343	835.368	832.003	16.5	1.1	3.2	-.4	8.6	1.3
Personal care .....	205.476	205.822	205.424	205.891	1.7	-1.0	2.7	.8	.3	1.8
Personal care products <sup>1</sup> .....	161.462	161.974	161.667	162.088	-5	-3.0	3.3	1.6	-1.8	2.4
Personal care services <sup>1</sup> .....	230.140	230.418	230.252	230.597	1.6	-2.0	.9	.8	-.2	.8
Miscellaneous personal services .....	360.275	360.922	360.899	362.235	1.9	2.1	3.1	2.2	2.0	2.6
<b>Commodity and service group</b>										
Commodities .....	182.495	184.454	186.856	188.512	-1.9	5.8	8.5	13.9	1.9	11.1
Food and beverages .....	221.853	223.029	224.691	225.708	.2	2.3	3.2	7.1	1.3	5.1
Commodities less food and beverages .....	160.848	163.087	165.737	167.620	-3.2	7.9	11.7	17.9	2.2	14.8
Nondurables less food and beverages .....	211.319	215.122	219.564	222.388	-4.9	13.5	22.7	22.7	3.9	22.7
Apparel .....	119.268	118.404	117.667	118.059	3.4	-3.5	3.8	-4.0	-1	-2
Nondurables less food, beverages, and apparel .....	273.060	278.583	287.991	292.312	-7.1	19.7	26.5	31.3	5.5	28.9
Durables .....	111.840	112.365	112.981	113.705	1.3	-1.4	-2.1	6.8	-1	2.3
Services .....	258.262	258.975	259.346	259.786	1.0	.9	1.3	2.4	1.0	1.8
Rent of shelter <sup>4</sup> .....	234.950	235.112	235.189	235.375	.2	1.1	1.9	.7	.7	1.3
Tenants' and household insurance <sup>1 2</sup> .....	127.690	128.035	126.914	127.654	3.5	3.8	-1.4	-1	3.6	-7
Energy services <sup>3</sup> .....	190.284	192.035	192.493	193.645	-3.5	-2	-2.3	7.3	-1.9	2.4
Water and sewer and trash collection services <sup>2</sup> .....	175.803	177.057	177.954	178.669	4.4	4.3	5.0	6.7	4.3	5.8
Household operations <sup>1 2</sup> .....	153.583	153.703	152.965	153.923	3.5	-2.3	2.3	.9	.5	1.6
Transportation services .....	264.463	265.678	266.766	267.612	2.2	3.1	3.5	4.8	2.6	4.1
Medical care services .....	420.595	422.224	422.517	423.843	2.5	4.5	1.7	3.1	3.5	2.4
Other services .....	297.247	297.790	298.163	298.388	2.1	-2	.6	1.5	.9	1.1
<b>Special indexes</b>										
All items less food .....	216.422	217.800	219.161	220.262	-3	3.1	4.6	7.3	1.4	5.9
All items less shelter .....	210.141	211.871	213.745	215.173	-7	4.1	5.7	9.9	1.7	7.8
All items less medical care .....	210.104	211.434	212.864	213.934	-3	3.0	4.5	7.5	1.3	6.0
Commodities less food .....	163.108	165.304	167.903	169.766	-3.0	7.7	11.3	17.4	2.2	14.3
Nondurables less food .....	212.360	215.973	220.224	223.009	-4.5	12.4	21.5	21.6	3.6	21.6
Nondurables less food and apparel .....	267.850	272.891	281.517	285.598	-6.4	17.8	24.9	29.3	5.0	27.1
Nondurables .....	217.332	219.926	223.418	225.644	-2.9	7.3	13.0	16.2	2.1	14.6
Services less rent of shelter <sup>4</sup> .....	253.273	254.399	254.803	255.550	.9	1.5	1.4	3.6	1.2	2.5
Services less medical care services .....	247.082	247.660	247.897	248.319	.6	1.0	1.6	2.0	.8	1.8
Energy .....	231.611	239.431	248.232	253.853	-11.9	24.0	29.7	44.3	4.5	36.8
All items less energy .....	216.590	217.170	217.702	218.248	1.2	.8	1.6	3.1	1.0	2.4
All items less food and energy .....	215.982	216.431	216.717	217.167	1.5	.4	1.3	2.2	1.0	1.7
Commodities less food and energy commodities .....	145.784	146.034	146.215	146.774	1.6	-9	.4	2.7	.3	1.6
Energy commodities .....	281.694	295.209	311.719	321.527	-17.3	43.7	54.2	69.7	9.0	61.8
Services less energy services .....	265.675	266.270	266.630	266.988	1.4	1.0	1.6	2.0	1.2	1.8

<sup>1</sup> Not seasonally adjusted.

<sup>2</sup> Indexes on a December 1997=100 base.

<sup>3</sup> This index series was calculated using a Laspeyres estimator. All other item stratum index series were calculated using a geometric means estimator.

<sup>4</sup> Indexes on a December 1984=100 base

<sup>5</sup> Indexes on a December 1988=100 base.

<sup>6</sup> Indexes on a December 2007=100 base.

NOTE: Index applies to a month as a whole, not to any specific date.

**Table 6. Consumer Price Index for Urban Wage Earners and Clerical Workers (CPI-W): Selected areas, all items index**

(1982-84=100, unless otherwise noted)

CPI-W	Pricing schedule 1	All items									
		Indexes				Percent change to Apr.2011 from—			Percent change to Mar.2011 from—		
		Jan. 2011	Feb. 2011	Mar. 2011	Apr. 2011	Apr. 2010	Feb. 2011	Mar. 2011	Mar. 2010	Jan. 2011	Feb. 2011
U.S. city average .....	M	216.400	217.535	220.024	221.743	3.6	1.9	0.8	3.0	1.7	1.1
<b>Region and area size<sup>2</sup></b>											
Northeast urban .....	M	233.914	235.109	237.377	238.756	3.3	1.6	.6	2.9	1.5	1.0
Size A - More than 1,500,000 .....	M	233.851	235.230	237.239	238.390	3.0	1.3	.5	2.8	1.4	.9
Size B/C - 50,000 to 1,500,000 <sup>3</sup> .....	M	142.196	142.691	144.395	145.520	3.8	2.0	.8	3.2	1.5	1.2
Midwest urban .....	M	206.258	206.981	209.094	210.991	3.7	1.9	.9	3.0	1.4	1.0
Size A - More than 1,500,000 .....	M	205.878	206.516	208.740	210.508	3.7	1.9	.8	3.0	1.4	1.1
Size B/C - 50,000 to 1,500,000 <sup>3</sup> .....	M	135.277	135.841	137.189	138.552	3.8	2.0	1.0	3.0	1.4	1.0
Size D - Nonmetropolitan (less than 50,000) .....	M	205.648	206.306	208.108	209.987	3.8	1.8	.9	3.0	1.2	.9
South urban .....	M	211.216	212.416	215.272	217.234	3.9	2.3	.9	3.2	1.9	1.3
Size A - More than 1,500,000 .....	M	213.058	214.129	216.680	218.615	3.6	2.1	.9	2.9	1.7	1.2
Size B/C - 50,000 to 1,500,000 <sup>3</sup> .....	M	135.207	135.919	137.789	138.962	3.9	2.2	.9	3.3	1.9	1.4
Size D - Nonmetropolitan (less than 50,000) .....	M	217.200	219.352	223.059	225.869	5.1	3.0	1.3	3.6	2.7	1.7
West urban .....	M	217.995	219.368	221.830	223.268	3.4	1.8	.6	3.0	1.8	1.1
Size A - More than 1,500,000 .....	M	220.564	221.848	224.576	225.833	3.5	1.8	.6	3.2	1.8	1.2
Size B/C - 50,000 to 1,500,000 <sup>3</sup> .....	M	134.900	135.845	137.331	138.362	3.3	1.9	.8	2.7	1.8	1.1
<b>Size classes</b>											
A <sup>4</sup> .....	M	200.022	201.033	203.220	204.607	3.4	1.8	.7	3.0	1.6	1.1
B/C <sup>3</sup> .....	M	136.112	136.808	138.471	139.645	3.8	2.1	.8	3.1	1.7	1.2
D .....	M	212.005	213.495	215.928	218.220	4.2	2.2	1.1	3.2	1.9	1.1
<b>Selected local areas<sup>5</sup></b>											
Chicago-Gary-Kenosha, IL-IN-WI .....	M	209.016	210.106	212.256	213.633	3.5	1.7	.6	2.8	1.6	1.0
Los Angeles-Riverside-Orange County, CA ...	M	221.540	222.814	225.770	227.051	3.9	1.9	.6	3.5	1.9	1.3
New York-Northern N.J.-Long Island, NY-NJ-CT-PA .....	M	238.396	239.750	241.667	242.697	2.9	1.2	.4	2.7	1.4	.8
Boston-Brockton-Nashua, MA-NH-ME-CT .....	1	240.540	-	244.324	-	-	-	-	2.5	1.6	-
Cleveland-Akron, OH .....	1	199.568	-	201.146	-	-	-	-	3.2	.8	-
Dallas-Fort Worth, TX .....	1	206.954	-	211.227	-	-	-	-	2.9	2.1	-
Washington-Baltimore, DC-MD-VA-WV <sup>6</sup> .....	1	144.556	-	146.572	-	-	-	-	3.4	1.4	-
Atlanta, GA .....	2	-	204.611	-	208.356	2.6	1.8	-	-	-	-
Detroit-Ann Arbor-Flint, MI .....	2	-	202.849	-	208.217	3.6	2.6	-	-	-	-
Houston-Galveston-Brazoria, TX .....	2	-	195.677	-	200.997	4.4	2.7	-	-	-	-
Miami-Fort Lauderdale, FL .....	2	-	225.346	-	229.675	4.1	1.9	-	-	-	-
Philadelphia-Wilmington-Atlantic City, PA-NJ-DE-MD .....	2	-	231.306	-	233.441	2.7	.9	-	-	-	-
San Francisco-Oakland-San Jose, CA .....	2	-	226.638	-	231.600	3.5	2.2	-	-	-	-
Seattle-Tacoma-Bremerton, WA .....	2	-	225.790	-	228.313	2.7	1.1	-	-	-	-

<sup>1</sup> Foods, fuels, and several other items priced every month in all areas; most other goods and services priced as indicated:

M - Every month.

1 - January, March, May, July, September, and November.

2 - February, April, June, August, October, and December.

<sup>2</sup> Regions defined as the four Census regions. See technical notes.

<sup>3</sup> Indexes on a December 1996=100 base.

<sup>4</sup> Indexes on a December 1986=100 base.

<sup>5</sup> In addition, the following metropolitan areas are published semiannually and appear in Tables 34 and 39 of the January and July issues of the CPI Detailed Report: Anchorage, AK; Cincinnati-Hamilton, OH-KY-IN; Denver-Boulder-Greeley, CO; Honolulu, HI; Kansas City, MO-KS; Milwaukee-Racine, WI; Minneapolis-St. Paul, MN-WI; Phoenix-Mesa, AZ; Pittsburgh, PA; Portland-Salem, OR-WA; St. Louis, MO-IL; San Diego, CA;

Tampa-St. Petersburg-Clearwater, FL.

<sup>6</sup> Indexes on a November 1996=100 base.

- Data not available.

NOTE: Local area indexes are byproducts of the national CPI program. Each local index has a smaller sample size than the national index and is, therefore, subject to substantially more sampling and other measurement error. As a result, local area indexes show greater volatility than the national index, although their long-term trends are similar. Therefore, the Bureau of Labor Statistics strongly urges users to consider adopting the national average CPI for use in their escalator clauses.

NOTE: Index applies to a month as a whole, not to any specific date.

**Table 7. Chained Consumer Price Index for All Urban Consumers (C-CPI-U): U.S. city average, by expenditure category and commodity and service group**

(December 1999=100, unless otherwise noted)

<b>C-CPI-U</b>	Relative importance, 2007-2008	Unadjusted indexes		Unadjusted percent change to Apr. 2011 from—	
		Mar. 2011	Apr. 2011	Apr. 2010	Mar. 2011
<b>Expenditure category</b>					
All items .....	100.000	128.618	129.416	2.9	0.6
Food and beverages .....	14.519	131.225	131.682	3.0	.3
Food .....	13.493	131.371	131.848	3.1	.4
Food at home .....	7.780	127.156	127.631	3.8	.4
Food away from home .....	5.712	137.136	137.614	2.1	.3
Alcoholic beverages .....	1.027	130.010	130.206	1.6	.2
Housing .....	42.074	128.982	129.089	.9	.1
Shelter .....	32.119	132.169	132.241	.9	.1
Fuels and utilities .....	5.231	159.059	159.420	2.3	.2
Household furnishings and operations .....	4.724	92.462	92.568	-1.3	.1
Apparel .....	3.772	90.915	91.583	-.3	.7
Transportation .....	17.199	142.121	145.823	11.6	2.6
Private transportation .....	16.013	142.885	146.817	11.8	2.8
Public transportation .....	1.186	132.342	133.188	9.2	.6
Medical care .....	6.294	153.840	154.243	2.6	.3
Medical care commodities .....	1.570	135.901	136.565	2.9	.5
Medical care services .....	4.723	160.419	160.719	2.6	.2
Recreation .....	6.625	102.508	102.570	-1.2	.1
Education and communication .....	6.288	112.691	112.667	.6	.0
Education .....	2.804	188.438	188.494	3.7	.0
Communication .....	3.484	71.732	71.688	-1.9	-.1
Other goods and services .....	3.229	140.404	142.309	2.8	1.4
<b>Commodity and service group</b>					
Services .....	59.383	136.799	137.030	1.4	.2
Commodities .....	40.617	118.832	120.357	5.2	1.3
Durables .....	10.376	80.840	81.185	.0	.4
Nondurables .....	30.241	138.722	140.911	7.0	1.6
All items less food and energy .....	76.901	121.086	121.368	1.1	.2
Energy .....	9.606	205.843	214.382	18.1	4.1

Indexes for 2011 are initial estimates. Indexes for 2010 are interim adjustments.  
NOTE: Index applies to a month as a whole, not to any specific date.