



**Transmission of material in this release is embargoed until
 8:30 a.m. (EDT) April 10, 2020**

USDL-20-0568

Technical information: (202) 691-7000 • cpi_info@bls.gov • www.bls.gov/cpi
 Media Contact: (202) 691-5902 • PressOffice@bls.gov

CONSUMER PRICE INDEX – MARCH 2020

The Consumer Price Index for All Urban Consumers (CPI-U) declined 0.4 percent in March on a seasonally adjusted basis, the largest monthly decline since January 2015, the U.S. Bureau of Labor Statistics reported today. Over the last 12 months, the all items index increased 1.5 percent before seasonal adjustment.

A sharp decline in the gasoline index was a major cause of the monthly decrease in the seasonally adjusted all items index, with decreases in the indexes for airline fares, lodging away from home, and apparel also contributing. The energy index fell 5.8 percent as the gasoline index decreased 10.5 percent. The food index rose in March, increasing 0.3 percent as the food at home index rose 0.5 percent.

The index for all items less food and energy fell 0.1 percent in March, its first monthly decline since January 2010. Along with the indexes for airline fares, lodging away from home, and apparel, the index for new vehicles declined in March. The index for shelter was unchanged, with increases in the indexes for rent and for owners' equivalent rent offsetting the aforementioned decline in the index for lodging away from home. Indexes that increased in March include medical care, used cars and trucks, motor vehicle insurance, and education.

The all items index increased 1.5 percent for the 12 months ending March, a notably smaller increase than the 2.3-percent increase for the period ending February. The index for all items less food and energy rose 2.1 percent over the last 12 months. The food index rose 1.9 percent over the last 12 months, while the energy index declined 5.7 percent.

Chart 1. One-month percent change in CPI for All Urban Consumers (CPI-U), seasonally adjusted, Mar. 2019 - Mar. 2020
 Percent change

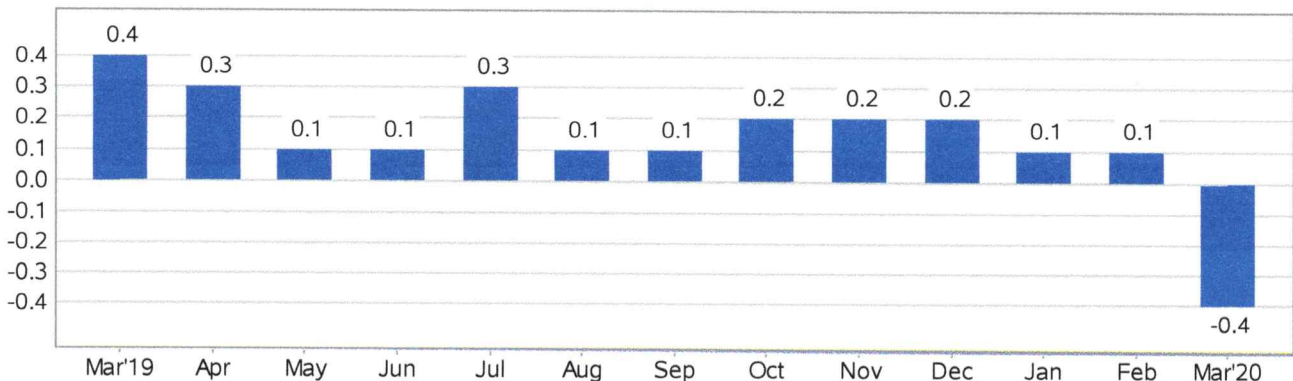


Chart 2. 12-month percent change in CPI for All Urban Consumers (CPI-U), not seasonally adjusted, Mar. 2019 - Mar. 2020

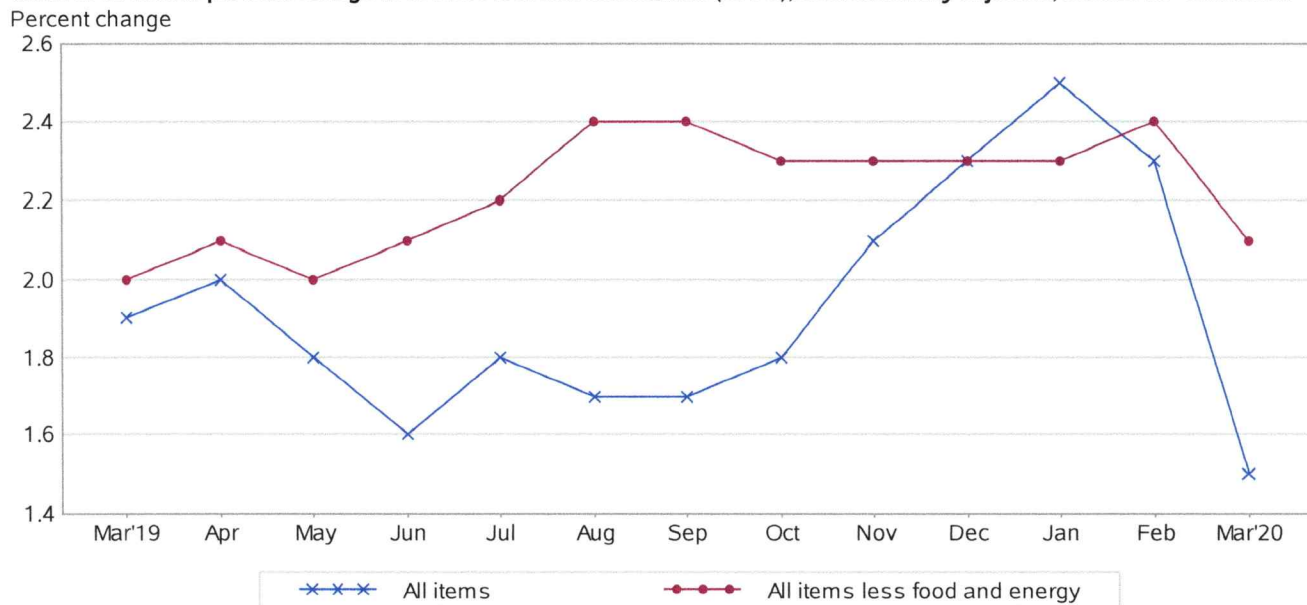


Table A. Percent changes in CPI for All Urban Consumers (CPI-U): U.S. city average

	Seasonally adjusted changes from preceding month							Un-adjusted 12-mos. ended Mar. 2020
	Sep. 2019	Oct. 2019	Nov. 2019	Dec. 2019	Jan. 2020	Feb. 2020	Mar. 2020	
All items.....	0.1	0.2	0.2	0.2	0.1	0.1	-0.4	1.5
Food.....	0.2	0.2	0.1	0.2	0.2	0.4	0.3	1.9
Food at home.....	0.1	0.2	0.1	0.0	0.1	0.5	0.5	1.1
Food away from home ¹	0.3	0.2	0.2	0.3	0.4	0.2	0.2	3.0
Energy.....	-0.8	1.7	0.8	1.6	-0.7	-2.0	-5.8	-5.7
Energy commodities.....	-1.5	2.6	1.2	3.0	-1.6	-3.5	-10.4	-10.4
Gasoline (all types).....	-1.5	2.7	1.2	3.1	-1.6	-3.4	-10.5	-10.2
Fuel oil.....	-0.6	1.1	1.0	1.1	-0.4	-8.5	-13.7	-20.1
Energy services.....	0.1	0.7	0.2	-0.2	0.6	-0.3	-0.5	-0.5
Electricity.....	0.2	0.6	0.2	-0.2	0.4	-0.1	-0.2	0.2
Utility (piped) gas service.....	-0.2	1.2	0.5	-0.5	1.0	-0.9	-1.4	-2.9
All items less food and energy.....	0.2	0.1	0.2	0.1	0.2	0.2	-0.1	2.1
Commodities less food and energy commodities.....	0.0	-0.4	-0.1	0.0	0.0	0.2	-0.3	-0.2
New vehicles.....	-0.1	-0.1	-0.1	0.1	0.0	0.1	-0.4	-0.4
Used cars and trucks.....	0.6	-1.2	-0.7	-0.4	-1.2	0.4	0.8	0.1
Apparel.....	-0.3	-1.7	0.6	0.1	0.7	0.4	-2.0	-1.6
Medical care commodities.....	-0.1	1.0	0.0	1.0	-0.6	-0.6	0.0	1.3
Services less energy services.....	0.2	0.3	0.3	0.2	0.3	0.2	0.0	2.8
Shelter.....	0.3	0.1	0.3	0.2	0.4	0.3	0.0	3.0
Transportation services.....	0.2	0.1	0.0	-0.1	0.3	0.3	-1.9	-0.7
Medical care services.....	0.4	0.8	0.4	0.3	0.3	0.3	0.5	5.5

¹ Not seasonally adjusted.

Food

The food index increased 0.3 percent in March, after rising 0.4 percent in February. The index for food at home increased 0.5 percent in March, the same increase as the prior month. All six major grocery store food group indexes increased in March. The index for nonalcoholic beverages rose 0.9 percent, its third consecutive increase. The index for fruits and vegetables rose 0.8 percent in March after being unchanged in February.

The index for dairy and related products continued to rise, increasing 0.6 percent in March after a 1.1-percent increase in February. The index for other food at home also rose 0.6 percent over the month, and the indexes for cereals and bakery products and for meats, poultry, fish, and eggs each increased 0.1 percent.

The index for food away from home rose 0.2 percent in March, the same increase as the prior month. The index for limited service meals rose 0.4 percent, while the index for full service meals was unchanged in March.

The food at home index increased 1.1 percent over the last 12 months. The index for dairy and related products increased 3.7 percent over the last year. The index for meats, poultry, fish, and eggs rose 2.3 percent, with the beef index increasing 3.8 percent. The indexes for nonalcoholic beverages and for other food at home both rose 1.4 percent over the last 12 months, while the index for cereals and bakery products increased slightly, rising 0.1 percent. The fruits and vegetables index declined 1.9 percent, with the fresh fruits index falling 3.5 percent. The index for food away from home rose 3.0 percent over the last year. The index for full service meals increased 3.2 percent and the index for limited service meals rose 2.8 percent over the last 12 months.

Energy

The energy index declined 5.8 percent in March, its largest monthly decrease since January 2015. The gasoline index fell for the third month in a row, declining 10.5 percent; before seasonal adjustment, gasoline prices fell 7.4 percent. The other major energy component indexes also declined in March. The index for fuel oil declined sharply, falling 13.7 percent. The index for natural gas fell 1.4 percent, and the electricity index decreased 0.2 percent.

The energy index fell 5.7 percent over the past 12 months, its largest 12-month decline since the period ending August 2016. The gasoline index decreased 10.2 percent, while the fuel oil index fell 20.1 percent. The index for natural gas declined more modestly, falling 2.9 percent. The electricity index increased slightly over the last 12 months, rising 0.2 percent.

All items less food and energy

The index for all items less food and energy decreased 0.1 percent in March. The shelter index was unchanged in March. The indexes for rent and owners' equivalent rent both increased 0.3 percent, but were offset by a 6.8-percent decline in the index for lodging away from home. The airline fares index declined sharply in March, falling 12.6 percent following a 0.3-percent decline in February. The apparel index fell 2.0 percent in March after rising in each of the prior 4 months. The index for new vehicles fell 0.4 percent in March after rising in February.

The medical care index rose 0.4 percent in March, though its component indexes were mixed. The index for physicians' services rose 0.3 percent, and the index for hospital services increased 0.4 percent. The prescription drugs index, however, decreased 0.2 percent. The index for used cars and trucks increased 0.8 percent in March, and the index for motor vehicle insurance rose 0.6 percent. The indexes for education, recreation, tobacco, alcoholic beverages, and personal care all also increased in March.

The index for all items less food and energy rose 2.1 percent over the past 12 months. The shelter index rose 3.0 percent over the 12-month span, and the medical care index rose 4.7 percent. Indexes that declined over the past 12 months include airline fares (-10.6 percent), apparel (-1.6 percent), and new vehicles (-0.4 percent).

Not seasonally adjusted CPI measures

The Consumer Price Index for All Urban Consumers (CPI-U) increased 1.5 percent over the last 12 months to an index level of 258.115 (1982-84=100). For the month, the index decreased 0.2 percent prior to seasonal adjustment.

The Consumer Price Index for Urban Wage Earners and Clerical Workers (CPI-W) increased 1.5 percent over the last 12 months to an index level of 251.375 (1982-84=100). For the month, the index decreased 0.2 percent prior to seasonal adjustment.

The Chained Consumer Price Index for All Urban Consumers (C-CPI-U) increased 1.3 percent over the last 12 months. For the month, the index decreased 0.3 percent on a not seasonally adjusted basis. Please note that the indexes for the past 10 to 12 months are subject to revision.

The Consumer Price Index for April 2020 is scheduled to be released on Tuesday, May 12, 2020 at 8:30 a.m. (EDT).

Coronavirus (COVID-19) Impact on March 2020 Consumer Price Index Data

The Consumer Price Index (CPI) program suspended data collection by personal visit on March 16, 2020. When possible, data normally collected by personal visit were collected either online or by phone. Additionally, data collection in March was affected by the temporary closing or limited operations of certain types of establishments. These factors resulted in an increase in the number of prices being considered temporarily unavailable and imputed. While the CPI program attempted to collect as much data as possible, many indexes are based on smaller amounts of collected prices than usual, and a small number of indexes that are normally published were not published this month. Additional information is available at www.bls.gov/bls/effects-of-covid-19-pandemic-on-bls-price-indexes.htm#CPI.

Specific information about the impact of COVID-19 on March 2020 CPI data collection is available at www.bls.gov/cpi/additional-resources/covid19-statement-march-2020.htm.

Technical Note

Brief Explanation of the CPI

The Consumer Price Index (CPI) measures the change in prices paid by consumers for goods and services. The CPI reflects spending patterns for each of two population groups: all urban consumers and urban wage earners and clerical workers. The all urban consumer group represents about 93 percent of the total U.S. population. It is based on the expenditures of almost all residents of urban or metropolitan areas, including professionals, the self-employed, the poor, the unemployed, and retired people, as well as urban wage earners and clerical workers. Not included in the CPI are the spending patterns of people living in rural nonmetropolitan areas, farming families, people in the Armed Forces, and those in institutions, such as prisons and mental hospitals. Consumer inflation for all urban consumers is measured by two indexes, namely, the Consumer Price Index for All Urban Consumers (CPI-U) and the Chained Consumer Price Index for All Urban Consumers (C-CPI-U).

The Consumer Price Index for Urban Wage Earners and Clerical Workers (CPI-W) is based on the expenditures of households included in the CPI-U definition that meet two requirements: more than one-half of the household's income must come from clerical or wage occupations, and at least one of the household's earners must have been employed for at least 37 weeks during the previous 12 months. The CPI-W population represents about 29 percent of the total U.S. population and is a subset of the CPI-U population.

The CPIs are based on prices of food, clothing, shelter, fuels, transportation, doctors' and dentists' services, drugs, and other goods and services that people buy for day-to-day living. Prices are collected each month in 75 urban areas across the country from about 6,000 housing units and approximately 22,000 retail establishments (department stores, supermarkets, hospitals, filling stations, and other types of stores and service establishments). All taxes directly associated with the purchase and use of items are included in the index. Prices of fuels and a few other items are obtained every month in all 75 locations. Prices of most other commodities and services are collected every month in the three largest geographic areas and every other month in other areas. Prices of most goods and services are obtained by personal visits or telephone calls by the Bureau's trained representatives.

In calculating the index, price changes for the various items in each location are aggregated using weights, which represent their importance in the spending of the appropriate population group. Local data are then combined to obtain a U.S. city average. For the CPI-U and CPI-W, separate indexes are also published by size of city, by region of the country, for cross-classifications of regions and population-size classes, and for 23 selected local areas. Area indexes do not measure differences in the level of prices among cities; they only measure the average change in prices for each area since the base period. For the C-CPI-U, data are issued only at the national level. The CPI-U and CPI-W are considered final when released, but the C-CPI-U is issued in preliminary form and subject to three subsequent quarterly revisions.

The index measures price change from a designed reference date. For most of the CPI-U and the CPI-W, the reference base is 1982-84 equals 100. The reference base for the C-CPI-U is December 1999 equals 100. An increase of 7 percent from the reference base, for example, is shown as 107.000. Alternatively, that relationship can also be expressed as the price of a base period market basket of goods and services rising from \$100 to \$107.

Sampling Error in the CPI

The CPI is a statistical estimate that is subject to sampling error because it is based upon a sample of retail prices and not the complete universe of all prices. BLS calculates and publishes estimates of the 1-month, 2-month, 6-month, and 12-month percent change standard errors annually for the CPI-U. These standard error estimates can be used to construct confidence intervals for hypothesis testing. For

example, the estimated standard error of the 1-month percent change is 0.03 percent for the U.S. all items CPI. This means that if we repeatedly sample from the universe of all retail prices using the same methodology, and estimate a percentage change for each sample, then 95 percent of these estimates will be within 0.06 percent of the 1-month percentage change based on all retail prices. For example, for a 1-month change of 0.2 percent in the all items CPI-U, we are 95 percent confident that the actual percent change based on all retail prices would fall between 0.14 and 0.26 percent. For the latest data, including information on how to use the estimates of standard error, see <https://www.bls.gov/cpi/tables/variance-estimates/home.htm>.

Calculating Index Changes

Movements of the indexes from 1 month to another are usually expressed as percent changes rather than changes in index points, because index point changes are affected by the level of the index in relation to its base period, while percent changes are not. The following table shows an example of using index values to calculate percent changes:

	Item A	Item B	Item C
Year I	112.500	225.000	110.000
Year II	121.500	243.000	128.000
Change in index points	9.000	18.000	18.000
Percent change	$9.0/112.500 \times 100 = 8.0$	$18.0/225.000 \times 100 = 8.0$	$18.0/110.000 \times 100 = 16.4$

Use of Seasonally Adjusted and Unadjusted Data

The Consumer Price Index (CPI) produces both unadjusted and seasonally adjusted data. Seasonally adjusted data are computed using seasonal factors derived by the X-13ARIMA-SEATS seasonal adjustment method. These factors are updated each February, and the new factors are used to revise the previous 5 years of seasonally adjusted data. The factors are available at www.bls.gov/cpi/tables/seasonal-adjustment/seasonal-factors-2020.pdf. For more information on data revision scheduling, please see the Factsheet on Seasonal Adjustment at www.bls.gov/cpi/seasonal-adjustment/questions-and-answers.htm and the Timeline of Seasonal Adjustment Methodological Changes at www.bls.gov/cpi/seasonal-adjustment/timeline-seasonal-adjustment-methodology-changes.htm.

For analyzing short-term price trends in the economy, seasonally adjusted changes are usually preferred since they eliminate the effect of changes that normally occur at the same time and in about the same magnitude every year—such as price movements resulting from weather events, production cycles, model changeovers, holidays, and sales. This allows data users to focus on changes that are not typical for the time of year. The unadjusted data are of primary interest to consumers concerned about the prices they actually pay. Unadjusted data are also used extensively for escalation purposes. Many collective bargaining contract agreements and pension plans, for example, tie compensation changes to the Consumer Price Index before adjustment for seasonal variation. BLS advises against the use of seasonally adjusted data in escalation agreements because seasonally adjusted series are revised annually.

Intervention Analysis

The Bureau of Labor Statistics uses intervention analysis seasonal adjustment for some CPI series. Sometimes extreme values or sharp movements can distort the underlying seasonal pattern of price change. Intervention analysis seasonal adjustment is a process by which the distortions caused by such unusual events are estimated and removed from the data prior to calculation of seasonal factors. The resulting seasonal factors, which more accurately represent the seasonal pattern, are then applied to the unadjusted data.

For example, this procedure was used for the motor fuel series to offset the effects of the 2009 return to normal pricing after the worldwide economic downturn in 2008. Retaining this outlier data during seasonal factor calculation would distort the computation of the seasonal portion of the time series data for motor fuel, so it was estimated and removed from the data prior to seasonal adjustment. Following that, seasonal factors were calculated based on this “prior adjusted” data. These seasonal factors represent a clearer picture of the seasonal pattern in the data. The last step is for motor fuel seasonal factors to be applied to the unadjusted data.

For the seasonal factors introduced for January 2020, BLS adjusted 53 series using intervention analysis seasonal adjustment, including selected food and beverage items, motor fuels, electricity, and vehicles.

Revision of Seasonally Adjusted Indexes

Seasonally adjusted data, including the U.S. city average all items index levels, are subject to revision for up to 5 years after their original release. Every year, economists in the CPI calculate new seasonal factors for seasonally adjusted series and apply them to the last 5 years of data. Seasonally adjusted indexes beyond the last 5 years of data are considered to be final and not subject to revision. For January 2020, revised seasonal factors and seasonally adjusted indexes for 2015 to 2019 were calculated and published. For series which are directly adjusted using the Census X-13ARIMA-SEATS seasonal adjustment software, the seasonal factors for 2019 will be applied to data for 2020 to produce the seasonally adjusted 2020 indexes. Series which are indirectly seasonally adjusted by summing seasonally adjusted component series have seasonal factors which are derived and are therefore not available in advance.

Determining Seasonal Status

Each year the seasonal status of every series is reevaluated based upon certain statistical criteria. Using these criteria, BLS economists determine whether a series should change its status from "not seasonally adjusted" to "seasonally adjusted", or vice versa. If any of the 81 components of the U.S. city average all items index change their seasonal adjustment status from seasonally adjusted to not seasonally adjusted, not seasonally adjusted data will be used in the aggregation of the dependent series for the last 5 years, but the seasonally adjusted indexes before that period will not be changed. Twenty-eight of the 81 components of the U.S. city average all items index are not seasonally adjusted for 2020.

Contact Information

For additional information about the CPI visit www.bls.gov/cpi or contact the CPI Information and Analysis Section at 202-691-7000 or cpi_info@bls.gov.

For additional information on seasonal adjustment in the CPI visit www.bls.gov/cpi/seasonal-adjustment/home.htm or contact the CPI seasonal adjustment section at 202-691-6968 or cpiseas@bls.gov.

Information from this release will be made available to sensory impaired individuals upon request. Voice phone: 202-691-5200; Federal Relay Service: 1-800-877-8339.

Table 1. Consumer Price Index for All Urban Consumers (CPI-U): U.S. city average, by expenditure category, March 2020

[1982-84=100, unless otherwise noted]

Expenditure category	Relative importance Feb. 2020	Unadjusted indexes			Unadjusted percent change		Seasonally adjusted percent change		
		Mar. 2019	Feb. 2020	Mar. 2020	Mar. 2019-Mar. 2020	Feb. 2020-Mar. 2020	Dec. 2019-Jan. 2020	Jan. 2020-Feb. 2020	Feb. 2020-Mar. 2020
All items.....	100.000	254.202	258.678	258.115	1.5	-0.2	0.1	0.1	-0.4
Food.....	13.788	257.724	261.876	262.708	1.9	0.3	0.2	0.4	0.3
Food at home.....	7.601	242.555	244.054	245.163	1.1	0.5	0.1	0.5	0.5
Cereals and bakery products.....	0.983	277.275	276.641	277.646	0.1	0.4	-0.4	0.5	0.1
Meats, poultry, fish, and eggs.....	1.675	249.062	253.396	254.724	2.3	0.5	0.0	0.2	0.1
Dairy and related products.....	0.772	217.531	224.443	225.627	3.7	0.5	0.2	1.1	0.6
Fruits and vegetables.....	1.321	305.399	299.817	299.641	-1.9	-0.1	0.1	0.0	0.8
Nonalcoholic beverages and beverage materials.....	0.914	172.060	173.194	174.454	1.4	0.7	0.4	0.5	0.9
Other food at home.....	1.937	211.550	213.215	214.565	1.4	0.6	0.2	0.8	0.6
Food away from home ¹	6.187	281.887	289.781	290.216	3.0	0.2	0.4	0.2	0.2
Energy.....	6.517	211.724	208.354	199.573	-5.7	-4.2	-0.7	-2.0	-5.8
Energy commodities.....	3.422	231.228	223.913	207.215	-10.4	-7.5	-1.6	-3.5	-10.4
Fuel oil.....	0.098	287.496	268.835	229.794	-20.1	-14.5	-0.4	-8.5	-13.7
Motor fuel.....	3.261	226.616	219.677	203.512	-10.2	-7.4	-1.6	-3.3	-10.4
Gasoline (all types).....	3.186	225.282	218.373	202.205	-10.2	-7.4	-1.6	-3.4	-10.5
Energy services.....	3.095	202.461	202.712	201.439	-0.5	-0.6	0.6	-0.3	-0.5
Electricity.....	2.417	210.937	212.180	211.332	0.2	-0.4	0.4	-0.1	-0.2
Utility (piped) gas service.....	0.678	174.089	171.469	168.994	-2.9	-1.4	1.0	-0.9	-1.4
All items less food and energy.....	79.695	261.836	267.268	267.312	2.1	0.0	0.2	0.2	-0.1
Commodities less food and energy commodities.....	20.240	144.994	144.605	144.718	-0.2	0.1	0.0	0.2	-0.3
Apparel.....	2.916	125.785	124.438	123.815	-1.6	-0.5	0.7	0.4	-2.0
New vehicles.....	3.750	147.788	147.803	147.124	-0.4	-0.5	0.0	0.1	-0.4
Used cars and trucks.....	2.522	140.513	137.452	140.689	0.1	2.4	-1.2	0.4	0.8
Medical care commodities.....	1.620	379.568	384.701	384.498	1.3	-0.1	-0.6	-0.6	0.0
Alcoholic beverages.....	1.026	252.087	254.831	255.660	1.4	0.3	0.3	0.3	0.5
Tobacco and smoking products.....	0.586	1,103.240	1,148.752	1,162.660	5.4	1.2	0.3	0.6	1.0
Services less energy services.....	59.455	334.518	344.006	343.990	2.8	0.0	0.3	0.2	0.0
Shelter.....	33.194	315.135	324.254	324.615	3.0	0.1	0.4	0.3	0.0
Rent of primary residence.....	7.782	327.513	338.616	339.519	3.7	0.3	0.4	0.3	0.3
Owners' equivalent rent of residences ²	24.032	322.482	332.177	332.864	3.2	0.2	0.3	0.2	0.3
Medical care services.....	7.228	528.575	555.597	557.889	5.5	0.4	0.3	0.3	0.5
Physicians' services.....	1.804	381.045	386.202	386.483	1.4	0.1	-0.4	0.2	0.3
Hospital services ³	2.208	336.648	350.635	351.350	4.4	0.2	0.8	-0.1	0.4
Transportation services.....	5.418	323.982	327.466	321.610	-0.7	-1.8	0.3	0.3	-1.9
Motor vehicle maintenance and repair ¹	1.079	294.226	302.220	304.131	3.4	0.6	0.2	0.7	0.6
Motor vehicle insurance.....	1.700	573.087	576.450	579.462	1.1	0.5	-0.2	0.5	0.6
Airline fares.....	0.820	259.698	265.142	232.113	-10.6	-12.5	0.7	-0.3	-12.6

¹ Not seasonally adjusted.

² Indexes on a December 1982=100 base.

³ Indexes on a December 1996=100 base.

Table 2. Consumer Price Index for All Urban Consumers (CPI-U): U.S. city average, by detailed expenditure category, March 2020

[1982-84=100, unless otherwise noted]

Expenditure category	Relative importance Feb. 2020	Unadjusted percent change		Seasonally adjusted percent change		
		Mar. 2019- Mar. 2020	Feb. 2020- Mar. 2020	Dec. 2019- Jan. 2020	Jan. 2020- Feb. 2020	Feb. 2020- Mar. 2020
All items.....	100.000	1.5	-0.2	0.1	0.1	-0.4
Food.....	13.788	1.9	0.3	0.2	0.4	0.3
Food at home.....	7.601	1.1	0.5	0.1	0.5	0.5
Cereals and bakery products.....	0.983	0.1	0.4	-0.4	0.5	0.1
Cereals and cereal products.....	0.301	-1.0	0.8	0.1	-0.2	0.7
Flour and prepared flour mixes.....	0.042	-0.7	0.8	-0.5	-0.6	1.0
Breakfast cereal ¹	0.137	-1.2	1.8	-1.0	-0.8	1.8
Rice, pasta, cornmeal ¹	0.123	-1.0	-0.2	1.5	0.7	-0.2
Rice ^{1, 2, 3}		-2.3	-0.2	1.0	0.1	-0.2
Bakery products ¹	0.682	0.7	0.2	0.1	0.5	0.2
Bread ^{1, 2}	0.195	2.3	0.3	-0.8	0.9	0.3
White bread ^{1, 3}		4.0	0.8	-0.4	0.8	0.8
Bread other than white ^{1, 3}		0.7	0.5	-1.0	0.8	0.5
Fresh biscuits, rolls, muffins ²	0.098	-1.4	-0.1	-1.1	0.9	-0.5
Cakes, cupcakes, and cookies.....	0.174	0.8	1.5	0.6	-1.2	1.8
Cookies ^{1, 3}		1.4	1.4	1.3	-1.3	1.4
Fresh cakes and cupcakes ^{1, 3}		-0.5	0.8	1.2	-0.9	0.8
Other bakery products.....	0.214	0.0	-1.0	-1.8	2.1	-1.0
Fresh sweetrolls, coffeecakes, doughnuts ^{1, 3}		-1.4	-2.3	-1.1	1.2	-2.3
Crackers, bread, and cracker products ³		1.8	0.3	-3.1	2.7	0.1
Frozen and refrigerated bakery products, pies, tarts, turnovers ³		-1.3	-1.5	-0.4	2.2	-1.7
Meats, poultry, fish, and eggs.....	1.675	2.3	0.5	0.0	0.2	0.1
Meats, poultry, and fish.....	1.576	2.5	0.5	0.1	0.3	0.0
Meats.....	0.989	3.3	0.4	0.3	0.3	-0.3
Beef and veal.....	0.451	3.8	0.6	0.0	-0.1	-0.1
Uncooked ground beef ¹	0.166	5.9	1.4	0.6	-0.4	1.4
Uncooked beef roasts ^{1, 2}	0.070	3.6	0.0	-0.7	1.2	0.0
Uncooked beef steaks ²	0.174	2.1	0.5	0.0	-0.1	-1.1
Uncooked other beef and veal ^{1, 2}	0.041	2.7	-0.7	0.2	0.8	-0.7
Pork.....	0.313	3.5	0.2	0.2	1.1	-0.6
Bacon, breakfast sausage, and related products ²	0.129	1.8	-0.4	0.2	-0.6	-1.0
Bacon and related products ³		-1.1	-2.4	-0.1	0.0	-3.1
Breakfast sausage and related products ^{2, 3}		6.4	2.6	1.1	-1.1	3.1
Ham.....	0.065	8.2	4.9	1.9	3.2	1.2
Ham, excluding canned ³		7.7	5.0	1.8	4.1	0.2
Pork chops ¹	0.048	3.2	-1.3	-1.7	2.4	-1.3
Other pork including roasts, steaks, and ribs ²	0.071	2.3	-2.1	-0.9	1.9	-1.9
Other meats.....	0.225	1.9	0.3	1.2	-0.2	-0.2
Frankfurters ³		1.9	2.7	4.8	-3.4	1.6
Lunchmeats ^{2, 3}		1.9	-0.2	0.9	-0.4	-0.3
Lamb and organ meats ^{1, 3}						
Lamb and mutton ^{1, 2, 3}						
Poultry ¹	0.319	2.2	1.3	-1.2	0.4	1.3
Chicken ^{1, 2}	0.259	1.2	1.3	-1.7	0.0	1.3
Fresh whole chicken ^{1, 3}		1.5	1.2	-2.1	-0.9	1.2
Fresh and frozen chicken parts ^{1, 3}		1.1	1.2	-1.6	0.5	1.2
Other uncooked poultry including turkey ²	0.060	7.1	1.3	0.1	1.9	1.6
Fish and seafood.....	0.267	0.1	-0.4	0.7	0.0	-0.5
Fresh fish and seafood ²	0.136	1.4	0.5	0.7	0.3	0.1
Processed fish and seafood ²	0.131	-1.2	-1.3	0.9	-0.5	-0.5
Shelf stable fish and seafood ^{1, 3}		0.9	-0.6	0.7	-1.4	-0.6

See footnotes at end of table.

Table 2. Consumer Price Index for All Urban Consumers (CPI-U): U.S. city average, by detailed expenditure category, March 2020 — Continued

[1982-84=100, unless otherwise noted]

Expenditure category	Relative importance Feb. 2020	Unadjusted percent change		Seasonally adjusted percent change		
		Mar. 2019- Mar. 2020	Feb. 2020- Mar. 2020	Dec. 2019- Jan. 2020	Jan. 2020- Feb. 2020	Feb. 2020- Mar. 2020
Frozen fish and seafood ³		-2.1	-2.5	0.0	0.1	-2.0
Eggs.....	0.099	-1.6	1.7	-1.4	-0.8	2.8
Dairy and related products.....	0.772	3.7	0.5	0.2	1.1	0.6
Milk ²	0.209	4.9	0.0	2.1	0.1	0.2
Fresh whole milk ³		5.1	0.0	1.8	0.2	0.1
Fresh milk other than whole ^{2, 3}		4.2	0.0	2.1	-0.1	0.1
Cheese and related products ¹	0.261	5.0	0.0	-0.2	1.1	0.0
Ice cream and related products.....	0.108	2.6	1.1	0.5	-0.6	2.2
Other dairy and related products ^{1, 2}	0.194	1.4	1.4	0.2	1.5	1.4
Fruits and vegetables.....	1.321	-1.9	-0.1	0.1	0.0	0.8
Fresh fruits and vegetables.....	1.040	-2.4	-0.2	0.2	0.0	0.7
Fresh fruits.....	0.530	-3.5	0.6	-1.4	0.1	1.0
Apples.....	0.074	-8.8	-1.4	-0.9	-1.6	-1.9
Bananas ¹	0.077	-1.4	0.3	-0.8	-0.4	0.3
Citrus fruits ²	0.128	-9.5	0.0	-0.2	-2.7	-1.1
Oranges, including tangerines ³		-10.8	-1.4	-0.2	-3.7	-0.7
Other fresh fruits ²	0.251	1.0	1.5	-3.6	3.0	4.6
Fresh vegetables.....	0.510	-1.3	-1.0	2.0	0.0	0.3
Potatoes.....	0.080	4.1	0.8	1.0	-0.9	2.5
Lettuce ¹	0.061	-4.2	-0.5	0.5	-3.6	-0.5
Tomatoes.....	0.084	7.8	2.1	5.1	3.2	4.5
Other fresh vegetables.....	0.285	-4.7	-2.5	1.3	-0.5	-1.8
Processed fruits and vegetables ²	0.280	0.2	0.5	-0.5	-0.2	1.1
Canned fruits and vegetables ²	0.146	-0.7	0.3	-1.0	-0.3	1.1
Canned fruits ^{2, 3}		-1.9	-0.7	-1.4	0.7	-0.4
Canned vegetables ^{2, 3}		0.4	1.3	-0.4	-0.8	1.8
Frozen fruits and vegetables ²	0.084	0.8	0.7	1.6	-1.0	0.3
Frozen vegetables ³		0.9	-0.2	1.5	0.2	-0.5
Other processed fruits and vegetables including dried ²	0.051	2.6	0.6	-0.2	-0.4	1.8
Dried beans, peas, and lentils ^{1, 2, 3}		1.8	1.1	-0.2	-0.5	1.1
Nonalcoholic beverages and beverage materials.....	0.914	1.4	0.7	0.4	0.5	0.9
Juices and nonalcoholic drinks ²	0.650	1.5	0.7	0.6	0.1	1.1
Carbonated drinks.....	0.273	1.6	1.0	0.4	0.0	1.3
Frozen noncarbonated juices and drinks ^{1, 2}	0.006	-4.1	0.3	0.2	-1.1	0.3
Nonfrozen noncarbonated juices and drinks ²	0.372	1.6	0.5	0.3	-0.2	0.9
Beverage materials including coffee and tea ²	0.264	1.1	0.7	-0.6	1.1	1.1
Coffee.....	0.169	0.3	1.1	-0.5	0.9	1.0
Roasted coffee ³		0.8	1.5	0.2	0.2	1.3
Instant coffee ^{1, 3}		-3.1	-0.6	-1.3	1.5	-0.6
Other beverage materials including tea ^{1, 2}	0.094	2.4	0.1	-0.7	1.6	0.1
Other food at home.....	1.937	1.4	0.6	0.2	0.8	0.6
Sugar and sweets ¹	0.265	2.6	0.6	2.6	-0.6	0.6
Sugar and sugar substitutes.....	0.036	5.9	1.0	0.7	0.8	1.7
Candy and chewing gum ^{1, 2}	0.176	3.2	0.6	2.4	-0.7	0.6
Other sweets ²	0.053	-1.6	0.6	0.1	-1.5	0.7
Fats and oils.....	0.213	-0.3	0.7	1.2	-0.4	1.1
Butter and margarine ²	0.064	0.2	2.5	2.0	-1.2	3.1
Butter ³		0.7	2.4	1.7	-0.6	2.6
Margarine ³		2.0	2.1	2.2	-1.0	2.7
Salad dressing ²	0.051	2.7	1.4	1.4	-1.0	1.8
Other fats and oils including peanut butter ²	0.098	-2.2	-0.8	0.5	0.4	-0.6
Peanut butter ^{1, 2, 3}		-1.9	-0.2	-3.6	4.2	-0.2
Other foods.....	1.459	1.5	0.6	-0.4	1.3	0.5

See footnotes at end of table.

Table 2. Consumer Price Index for All Urban Consumers (CPI-U): U.S. city average, by detailed expenditure category, March 2020 — Continued

[1982-84=100, unless otherwise noted]

Expenditure category	Relative importance Feb. 2020	Unadjusted percent change		Seasonally adjusted percent change		
		Mar. 2019- Mar. 2020	Feb. 2020- Mar. 2020	Dec. 2019- Jan. 2020	Jan. 2020- Feb. 2020	Feb. 2020- Mar. 2020
Soups.....	0.087	3.2	1.9	0.7	1.6	0.4
Frozen and freeze dried prepared foods.....	0.252	1.6	-0.1	1.1	1.0	-0.1
Snacks ¹	0.332	-0.3	0.5	-0.7	2.5	0.5
Spices, seasonings, condiments, sauces.....	0.290	1.8	1.6	-0.7	1.5	1.6
Salt and other seasonings and spices ^{2, 3}		1.6	1.2	0.1	-0.9	2.2
Olives, pickles, relishes ^{1, 2, 3}			0.9	4.0	0.1	0.9
Sauces and gravies ^{2, 3}		2.3	2.3	-0.9	3.0	1.7
Other condiments ³		-0.1	1.9	-0.8	-0.6	1.8
Baby food ^{1, 2}	0.042	3.6	0.2	-1.2	3.7	0.2
Other miscellaneous foods ²	0.455	2.1	0.3	-1.0	1.0	0.0
Prepared salads ^{1, 3, 4}		5.4	0.0	-0.5	0.3	0.0
Food away from home ¹	6.187	3.0	0.2	0.4	0.2	0.2
Full service meals and snacks ^{1, 2}	3.124	3.2	0.0	0.4	0.2	0.0
Limited service meals and snacks ^{1, 2}	2.666	2.8	0.4	0.4	0.3	0.4
Food at employee sites and schools ²	0.145	1.9	0.3	0.1	0.2	0.4
Food at elementary and secondary schools ^{1, 3, 5}		2.2	0.0	0.0	-0.1	0.0
Food from vending machines and mobile vendors ^{1, 2}	0.080	3.6	0.2	0.3	-0.3	0.2
Other food away from home ^{1, 2}	0.172	1.8	0.1	0.0	0.1	0.1
Energy.....	6.517	-5.7	-4.2	-0.7	-2.0	-5.8
Energy commodities.....	3.422	-10.4	-7.5	-1.6	-3.5	-10.4
Fuel oil and other fuels.....	0.161	-14.2	-9.5	-1.4	-5.7	-8.9
Fuel oil.....	0.098	-20.1	-14.5	-0.4	-8.5	-13.7
Propane, kerosene, and firewood ⁶	0.062	-4.6	-1.5	-3.0	-0.1	-0.7
Motor fuel.....	3.261	-10.2	-7.4	-1.6	-3.3	-10.4
Gasoline (all types).....	3.186	-10.2	-7.4	-1.6	-3.4	-10.5
Gasoline, unleaded regular ³		-11.0	-7.8	-1.5	-3.7	-10.9
Gasoline, unleaded midgrade ^{3, 7}		-6.9	-5.7	-1.0	-3.6	-8.2
Gasoline, unleaded premium ³		-5.6	-5.3	-1.3	-2.9	-7.2
Other motor fuels ²	0.075	-8.1	-5.4	0.4	-2.0	-6.3
Energy services.....	3.095	-0.5	-0.6	0.6	-0.3	-0.5
Electricity.....	2.417	0.2	-0.4	0.4	-0.1	-0.2
Utility (piped) gas service.....	0.678	-2.9	-1.4	1.0	-0.9	-1.4
All items less food and energy.....	79.695	2.1	0.0	0.2	0.2	-0.1
Commodities less food and energy commodities.....	20.240	-0.2	0.1	0.0	0.2	-0.3
Household furnishings and supplies ⁸	3.737	-0.4	-0.2	-0.1	0.1	-0.3
Window and floor coverings and other linens ^{1, 2}	0.293	0.7	-0.7	4.4	1.2	-0.7
Floor coverings ^{1, 2}	0.064	-1.2	-0.4	0.8	0.2	-0.4
Window coverings ^{1, 2}	0.061	7.1	1.4	2.2	1.4	1.4
Other linens ^{1, 2}	0.169	-0.3	-1.6	6.6	1.5	-1.6
Furniture and bedding ¹	0.940	-0.5	-1.1	0.2	0.9	-1.1
Bedroom furniture ¹	0.333	-0.8	-2.0	0.6	-0.8	-2.0
Living room, kitchen, and dining room furniture ^{1, 2}	0.454	1.0	-0.6	-0.5	1.9	-0.6
Other furniture ^{1, 2}	0.144	-5.2	-0.9	1.7	1.6	-0.9
Infants' furniture ^{1, 3, 5}			-6.6	1.0	0.0	-6.6
Appliances ²	0.211	-0.3	0.0	-0.8	0.0	0.4
Major appliances ²	0.071	-1.9	0.2	-0.4	4.3	0.2
Laundry equipment ³		-1.4	5.4	-1.6	0.6	4.1
Other appliances ²	0.138	0.9	-0.1	-1.2	-1.8	0.2
Other household equipment and furnishings ²	0.535	-2.9	0.0	-0.4	-1.8	0.0
Clocks, lamps, and decorator items ¹	0.310	-4.8	-0.6	0.3	-0.6	-0.6
Indoor plants and flowers ⁹	0.090	-0.2	2.0	-1.6	-1.6	2.1
Dishes and flatware ^{1, 2}	0.055	9.5	1.0	5.1	-1.5	1.0
Nonelectric cookware and tableware ²	0.080	-6.5	-0.4	1.1	-2.0	-1.6

See footnotes at end of table.

Table 2. Consumer Price Index for All Urban Consumers (CPI-U): U.S. city average, by detailed expenditure category, March 2020 — Continued
 [1982-84=100, unless otherwise noted]

Expenditure category	Relative importance Feb. 2020	Unadjusted percent change		Seasonally adjusted percent change		
		Mar. 2019- Mar. 2020	Feb. 2020- Mar. 2020	Dec. 2019- Jan. 2020	Jan. 2020- Feb. 2020	Feb. 2020- Mar. 2020
Tools, hardware, outdoor equipment and supplies ² ...	0.874	0.4	0.3	0.0	0.0	0.1
Tools, hardware and supplies ^{1, 2}	0.241	-0.4	0.6	1.0	0.6	0.6
Outdoor equipment and supplies ²	0.447	0.8	0.2	-0.2	0.0	-0.1
Housekeeping supplies ¹	0.882	-0.1	0.4	-0.1	-0.2	0.4
Household cleaning products ^{1, 2}	0.347	0.2	1.1	-0.1	-0.7	1.1
Household paper products ^{1, 2}	0.218	1.2	0.1	-0.8	0.3	0.1
Miscellaneous household products ^{1, 2}	0.318	-1.6	-0.3	0.2	0.1	-0.3
Apparel.....	2.916	-1.6	-0.5	0.7	0.4	-2.0
Men's and boys' apparel.....	0.740	-0.8	-0.8	0.6	-0.3	0.2
Men's apparel.....	0.601	0.1	-1.3	2.3	-0.7	0.0
Men's suits, sport coats, and outerwear.....	0.113	-4.1	-1.5	1.5	1.0	-0.8
Men's underwear, nightwear, swimwear, and accessories ¹	0.166	3.9	-0.7	4.2	3.4	-0.7
Men's shirts and sweaters ²	0.169	-3.9	-0.5	-1.0	-1.9	1.0
Men's pants and shorts.....	0.146	4.2	-2.7	6.2	-2.5	0.5
Boys' apparel.....	0.139	-5.2	1.3	-5.8	-0.1	3.2
Women's and girls' apparel.....	1.203	-2.6	0.5	0.2	1.4	-3.0
Women's apparel.....	1.000	-3.5	0.6	-0.1	1.2	-3.1
Women's outerwear.....	0.067	-8.0	0.0	-5.5	4.2	-1.1
Women's dresses.....	0.110	-10.0	1.1	-2.3	0.9	-5.7
Women's suits and separates ²	0.513	-4.3	1.3	-0.7	-0.7	-2.5
Women's underwear, nightwear, swimwear, and accessories ²	0.300	1.9	-0.5	3.5	2.4	-2.5
Girls' apparel.....	0.203	3.3	0.1	1.8	2.6	-2.4
Footwear.....	0.678	-0.2	-1.2	1.3	0.1	-2.8
Men's footwear ¹	0.235	-1.3	-2.2	1.3	0.5	-2.2
Boys' and girls' footwear.....	0.143	-0.4	-1.2	1.3	2.9	-3.6
Women's footwear.....	0.300	0.8	-0.5	1.7	-0.7	-1.9
Infants' and toddlers' apparel.....	0.133	-8.0	-3.6	1.2	-0.9	-4.3
Jewelry and watches ⁶	0.162	2.0	-1.1	2.0	-1.2	0.1
Watches ^{1, 6}	0.039	2.9	1.2	2.4	0.5	1.2
Jewelry ⁶	0.123	1.1	-1.8	2.7	-3.0	-0.8
Transportation commodities less motor fuel ⁸	6.903	-0.1	0.6	-0.4	0.2	0.1
New vehicles.....	3.750	-0.4	-0.5	0.0	0.1	-0.4
New cars and trucks ^{2, 3}		-0.4	-0.5	0.0	0.1	-0.4
New cars ³		0.0	-0.5	0.2	0.4	-0.5
New trucks ^{3, 10}		-0.6	-0.4	-0.1	0.2	-0.6
Used cars and trucks.....	2.522	0.1	2.4	-1.2	0.4	0.8
Motor vehicle parts and equipment ¹	0.396	1.6	-0.2	0.4	0.1	-0.2
Tires ¹	0.251	0.4	-0.2	-0.2	0.2	-0.2
Vehicle accessories other than tires ^{1, 2}	0.146	3.5	-0.2	1.4	-0.2	-0.2
Vehicle parts and equipment other than tires ^{1, 3}		4.1	0.1	1.8	-0.3	0.1
Motor oil, coolant, and fluids ^{1, 3}		-1.2	-3.7	-3.0	3.4	-3.7
Medical care commodities.....	1.620	1.3	-0.1	-0.6	-0.6	0.0
Medicinal drugs ⁸	1.547	1.3	0.0	-0.4	-0.8	0.1
Prescription drugs.....	1.171	1.5	-0.3	-0.4	-0.8	-0.2
Nonprescription drugs ^{1, 8}	0.376	0.6	0.8	-1.3	-0.3	0.8
Medical equipment and supplies ^{1, 8}	0.072	1.3	-0.2	-0.8	-0.3	-0.2
Recreation commodities ⁸	2.038	-1.1	-0.8	0.1	-0.1	-0.8
Video and audio products ⁸	0.273	-7.9	0.3	-0.9	-0.3	0.3
Televisions.....	0.096	-16.8	-0.6	-1.7	-1.6	-0.2
Other video equipment ²	0.042	-2.2	0.2	-1.4	0.4	-0.7
Audio equipment ¹	0.079	0.1	1.3	0.2	1.1	1.3
Recorded music and music subscriptions ^{1, 2}	0.045	-4.2	0.8	-0.7	-0.6	0.8

See footnotes at end of table.

Table 2. Consumer Price Index for All Urban Consumers (CPI-U): U.S. city average, by detailed expenditure category, March 2020 — Continued
 [1982-84=100, unless otherwise noted]

Expenditure category	Relative importance Feb. 2020	Unadjusted percent change		Seasonally adjusted percent change		
		Mar. 2019- Mar. 2020	Feb. 2020- Mar. 2020	Dec. 2019- Jan. 2020	Jan. 2020- Feb. 2020	Feb. 2020- Mar. 2020
Pets and pet products ¹	0.651	1.6	-0.6	-0.1	0.5	-0.6
Pet food ^{1, 2, 3}		1.8	-0.3	-0.3	0.7	-0.3
Purchase of pets, pet supplies, accessories ^{1, 2, 3}		1.3	-1.0	0.2	0.3	-1.0
Sporting goods.....	0.594	-0.3	-1.5	0.6	-0.4	-2.0
Sports vehicles including bicycles ¹	0.357	-0.5	-2.1	0.6	-1.1	-2.1
Sports equipment.....	0.227	-0.1	-0.5	0.0	1.4	-0.9
Photographic equipment and supplies.....	0.027	9.8	0.8	2.4	4.9	0.0
Film and photographic supplies ^{1, 2, 3}						
Photographic equipment ^{2, 3}		9.1	0.6	2.6	5.2	-0.1
Recreational reading materials ¹	0.118	5.8	-0.2	1.4	0.3	-0.2
Newspapers and magazines ^{1, 2}	0.066	8.5	0.7	2.4	-1.6	0.7
Recreational books ^{1, 2}	0.050	1.4	-1.4	-0.1	3.0	-1.4
Other recreational goods ²	0.375	-6.1	-1.2	-0.2	-0.9	-0.7
Toys.....	0.290	-7.3	-1.1	-0.3	-1.6	-0.4
Toys, games, hobbies and playground equipment ^{2, 3}		-8.0	-0.6	-0.4	-2.4	-0.4
Sewing machines, fabric and supplies ^{1, 2}	0.022	-11.2	-7.1	0.4	2.7	-7.1
Music instruments and accessories ^{1, 2}	0.047	5.1	1.1	0.4	1.0	1.1
Education and communication commodities ⁸	0.516	-4.7	0.4	-1.2	0.6	0.4
Educational books and supplies.....	0.107	-2.7	0.1	-1.7	0.1	0.2
College textbooks ^{1, 3, 11}		-2.9	0.1	-2.7	0.9	0.1
Information technology commodities ⁸	0.409	-5.5	0.5	-1.1	0.7	0.4
Computers, peripherals, and smart home assistants ⁴	0.298	-3.0	1.2	-1.1	1.5	0.8
Computer software and accessories ^{1, 2}	0.019	-10.9	-1.2	-1.2	0.5	-1.2
Telephone hardware, calculators, and other consumer information items ²	0.091	-13.5	-1.4	-1.4	-1.9	-0.4
Alcoholic beverages.....	1.026	1.4	0.3	0.3	0.3	0.5
Alcoholic beverages at home.....	0.575	1.4	0.6	0.4	0.4	0.7
Beer, ale, and other malt beverages at home.....	0.221	3.4	0.7	0.8	0.8	0.8
Distilled spirits at home.....	0.093	-1.0	0.1	0.4	0.0	-0.1
Whiskey at home ^{1, 3}		-1.1	-0.9	1.5	1.0	-0.9
Distilled spirits, excluding whiskey, at home ^{1, 3}		-0.3	0.5	1.0	-0.1	0.5
Wine at home.....	0.261	0.2	0.6	-0.1	0.2	0.9
Alcoholic beverages away from home ¹	0.451	1.6	0.0	0.4	0.2	0.0
Beer, ale, and other malt beverages away from home ^{2, 3}		0.0	-0.2	0.5	0.1	-0.2
Wine away from home ^{1, 2, 3}		1.8	0.1	0.2	0.1	0.1
Distilled spirits away from home ^{1, 2, 3}		3.5	0.3	0.2	0.6	0.3
Other goods ⁹	1.484	3.1	0.4	0.5	0.6	0.3
Tobacco and smoking products.....	0.586	5.4	1.2	0.3	0.6	1.0
Cigarettes ²	0.509	5.8	1.3	0.4	0.7	1.0
Tobacco products other than cigarettes ^{1, 2}	0.059	1.3	0.3	-0.5	0.3	0.3
Personal care products ¹	0.693	0.5	-0.1	0.1	1.1	-0.1
Hair, dental, shaving, and miscellaneous personal care products ^{1, 2}	0.372	1.4	-0.3	-0.2	1.2	-0.3
Cosmetics, perfume, bath, nail preparations and implements ¹	0.313	-0.7	0.2	0.4	1.0	0.2
Miscellaneous personal goods ²	0.205	4.2	-0.3	2.9	-1.2	-0.5
Stationery, stationery supplies, gift wrap ³		5.0	-0.5	0.2	-0.2	-0.6
Infants' equipment ^{1, 3, 5}		11.6	2.4	16.1	-2.8	2.4
Services less energy services.....	59.455	2.8	0.0	0.3	0.2	0.0
Shelter.....	33.194	3.0	0.1	0.4	0.3	0.0
Rent of shelter ¹²	32.825	3.0	0.1	0.4	0.3	0.1

See footnotes at end of table.

Table 2. Consumer Price Index for All Urban Consumers (CPI-U): U.S. city average, by detailed expenditure category, March 2020 — Continued

[1982-84=100, unless otherwise noted]

Expenditure category	Relative importance Feb. 2020	Unadjusted percent change		Seasonally adjusted percent change		
		Mar. 2019- Mar. 2020	Feb. 2020- Mar. 2020	Dec. 2019- Jan. 2020	Jan. 2020- Feb. 2020	Feb. 2020- Mar. 2020
Rent of primary residence.....	7.782	3.7	0.3	0.4	0.3	0.3
Lodging away from home ²	1.011	-6.4	-3.1	0.2	2.0	-6.8
Housing at school, excluding board ¹²	0.117	2.3	0.0	0.2	0.2	0.2
Other lodging away from home including hotels and motels.....	0.894	-7.5	-3.5	0.1	2.3	-7.7
Owners' equivalent rent of residences ¹²	24.032	3.2	0.2	0.3	0.2	0.3
Owners' equivalent rent of primary residence ¹² ..	22.826	3.2	0.2	0.3	0.2	0.3
Tenants' and household insurance ^{1, 2}	0.369	-0.5	-0.6	-0.3	0.3	-0.6
Water and sewer and trash collection services ²	1.086	3.2	0.2	0.2	0.3	0.3
Water and sewerage maintenance.....	0.795	3.1	0.3	0.0	0.2	0.4
Garbage and trash collection ^{1, 10}	0.291	3.5	0.2	0.9	0.7	0.2
Household operations ^{1, 2}	0.877	4.5	0.1	0.1	0.7	0.1
Domestic services ^{1, 2}	0.290	1.0	0.0	0.2	0.0	0.0
Gardening and lawn care services ^{1, 2}					1.7	
Moving, storage, freight expense ^{1, 2}	0.088	2.3	-0.4	1.3	0.9	-0.4
Repair of household items ^{1, 2}	0.116	5.7	0.1	0.5	-0.3	0.1
Medical care services.....	7.228	5.5	0.4	0.3	0.3	0.5
Professional services.....	3.630	1.6	0.2	-0.2	0.1	0.3
Physicians' services.....	1.804	1.4	0.1	-0.4	0.2	0.3
Dental services.....	0.988	2.8	0.7	-0.3	-0.1	0.4
Eyeglasses and eye care ^{1, 6}	0.366	0.6	0.0	-0.1	0.0	0.0
Services by other medical professionals ^{1, 6}	0.472	0.8	0.0	0.2	0.0	0.0
Hospital and related services.....	2.400	4.2	0.2	0.7	0.0	0.4
Hospital services ¹³	2.208	4.4	0.2	0.8	-0.1	0.4
Inpatient hospital services ^{13, 3}		4.0	0.2	0.6	-0.7	0.6
Outpatient hospital services ^{3, 6}		3.6	0.1	1.0	0.0	0.2
Nursing homes and adult day services ¹³	0.123	2.5	0.2	0.0	0.2	0.3
Care of invalids and elderly at home ^{1, 5}	0.069	3.1	1.7	0.0	0.7	1.7
Health insurance ^{1, 5}	1.199	20.6	1.3	1.7	1.4	1.3
Transportation services.....	5.418	-0.7	-1.8	0.3	0.3	-1.9
Leased cars and trucks ^{1, 11}	0.642	-3.6	-0.6	-0.2	0.3	-0.6
Car and truck rental ²	0.120	3.6	-2.8	1.2	-2.2	-6.9
Motor vehicle maintenance and repair ¹	1.079	3.4	0.6	0.2	0.7	0.6
Motor vehicle body work ¹	0.057	3.8	0.0	-0.2	0.2	0.0
Motor vehicle maintenance and servicing ¹	0.625	3.5	0.8	0.0	0.3	0.8
Motor vehicle repair ^{1, 2}	0.338	3.2	0.4	0.5	1.6	0.4
Motor vehicle insurance.....	1.700	1.1	0.5	-0.2	0.5	0.6
Motor vehicle fees ^{1, 2}	0.572	2.7	0.2	0.3	0.2	0.2
State motor vehicle registration and license fees ^{1, 2}	0.297	2.8	0.1	0.4	0.1	0.1
Parking and other fees ^{1, 2}	0.260	2.6	0.3	0.2	0.3	0.3
Parking fees and tolls ^{2, 3}		2.5	0.3	0.0	0.3	0.3
Automobile service clubs ^{1, 2, 3}			1.2	0.2	0.1	1.2
Public transportation.....	1.305	-7.2	-8.2	0.2	0.2	-8.5
Airline fares.....	0.820	-10.6	-12.5	0.7	-0.3	-12.6
Other intercity transportation.....	0.177	-6.1	-2.7	0.3	-0.2	-4.0
Intercity bus fare ^{1, 3, 4}		-5.2	-2.1	-16.3	-0.6	-2.1
Intercity train fare ^{1, 3, 4}						
Ship fare ^{1, 2, 3}		-7.7	-1.4	0.2	-0.8	-1.4
Intracity transportation ¹	0.304	1.1	0.2	0.3	0.3	0.2
Intracity mass transit ^{1, 3, 8}		1.8	0.0	0.1	0.2	0.0
Recreation services ⁸	3.769	2.4	0.7	0.3	-0.5	0.6
Video and audio services ⁸	1.243	2.6	0.4	0.4	-0.6	0.1
Cable and satellite television service ¹⁰	1.162	3.4	0.4	0.7	-0.6	0.1

See footnotes at end of table.

Table 2. Consumer Price Index for All Urban Consumers (CPI-U): U.S. city average, by detailed expenditure category, March 2020 — Continued
 [1982-84=100, unless otherwise noted]

Expenditure category	Relative importance Feb. 2020	Unadjusted percent change		Seasonally adjusted percent change		
		Mar. 2019- Mar. 2020	Feb. 2020- Mar. 2020	Dec. 2019- Jan. 2020	Jan. 2020- Feb. 2020	Feb. 2020- Mar. 2020
Video discs and other media, including rental of video ^{1, 2}	0.081	-9.6	0.5	-2.4	-0.6	0.5
Video discs and other media ^{1, 2, 3}		-16.0	0.9	-4.1	-1.1	0.9
Rental of video discs and other media ^{1, 2, 3}		2.7	0.8	0.2	0.2	0.8
Pet services including veterinary ²	0.548	3.1	0.3	0.3	-0.4	0.3
Pet services ^{1, 2, 3}		3.1	0.1	0.2	0.6	0.1
Veterinarian services ^{2, 3}		3.3	0.4	0.2	-0.7	0.4
Photographers and photo processing ^{1, 2}	0.045	0.5	0.2	0.2	2.9	0.2
Photographer fees ^{1, 2, 3}		2.9	0.0	-0.3	2.4	0.0
Photo processing ^{1, 2, 3}		-3.1	0.5	0.6	0.6	0.5
Other recreation services ²	1.932	2.2	1.0	0.2	-0.4	1.1
Club membership for shopping clubs, fraternal, or other organizations, or participant sports fees ^{1, 2}	0.698	2.8	0.8	0.5	-0.3	0.8
Admissions.....	0.700	2.4	1.3	-0.1	-0.8	1.7
Admission to movies, theaters, and concerts ^{1, 2, 3}		3.1	0.5	0.3	0.7	0.5
Admission to sporting events ^{1, 2, 3}		2.7	2.2	0.4	-4.0	2.2
Fees for lessons or instructions ^{1, 6}	0.212	0.5	0.0	0.2	0.2	0.0
Education and communication services ⁸	6.230	2.1	-0.1	0.4	0.1	0.1
Tuition, other school fees, and childcare.....	2.912	2.3	0.0	0.4	0.3	0.3
College tuition and fees.....	1.569	1.7	0.0	0.5	0.2	0.2
Elementary and high school tuition and fees.....	0.424	2.7	0.1	0.3	0.3	0.4
Day care and preschool ⁹	0.764	3.5	0.1	0.1	0.6	0.2
Technical and business school tuition and fees ²	0.036	2.1	0.1	0.4	0.2	0.2
Postage and delivery services ²	0.112	4.1	-0.1	0.6	0.6	0.2
Postage.....	0.102	4.3	0.0	0.8	0.7	0.2
Delivery services ²	0.010	1.3	-0.6	-1.4	0.1	-0.4
Telephone services ^{1, 2}	2.293	1.8	0.0	0.3	-0.1	0.0
Wireless telephone services ^{1, 2}	1.891	-0.1	0.0	0.0	-0.2	0.0
Land-line telephone services ^{1, 8}	0.402	7.9	0.1	1.6	0.3	0.1
Internet services and electronic information providers ²	0.901	2.1	-0.6	0.7	0.0	-0.3
Other personal services ^{1, 8}	1.654	2.8	0.2	0.6	0.3	0.2
Personal care services ¹	0.669	3.3	0.1	0.7	0.3	0.1
Haircuts and other personal care services ^{1, 2}	0.669	3.3	0.1	0.7	0.3	0.1
Miscellaneous personal services.....	0.986	2.4	0.3	0.6	0.2	0.1
Legal services ^{1, 6}	0.251	0.6	0.0	0.7	0.6	0.0
Funeral expenses ^{1, 6}	0.140	1.6	0.0	0.3	-0.4	0.0
Laundry and dry cleaning services ^{1, 2}	0.219	3.3	0.1	0.3	0.4	0.1
Apparel services other than laundry and dry cleaning ^{1, 2}	0.030	5.4	1.6	0.2	0.8	1.6
Financial services ⁶	0.233	4.0	0.8	0.8	0.5	0.0
Checking account and other bank services ^{1, 2, 3}		2.2	1.2	0.0	0.8	1.2
Tax return preparation and other accounting fees ^{1, 2, 3}		7.4	0.5	2.0	0.1	0.5

¹ Not seasonally adjusted.

² Indexes on a December 1997=100 base.

³ Special index based on a substantially smaller sample.

⁴ Indexes on a December 2007=100 base.

⁵ Indexes on a December 2005=100 base.

⁶ Indexes on a December 1986=100 base.

⁷ Indexes on a December 1993=100 base.

⁸ Indexes on a December 2009=100 base.

⁹ Indexes on a December 1990=100 base.

¹⁰ Indexes on a December 1983=100 base.

¹¹ Indexes on a December 2001=100 base.

¹² Indexes on a December 1982=100 base.

¹³ Indexes on a December 1996=100 base.

Table 3. Consumer Price Index for All Urban Consumers (CPI-U): U.S. city average, special aggregate indexes, March 2020

[1982-84=100, unless otherwise noted]

Special aggregate indexes	Relative importance Feb. 2020	Unadjusted indexes			Unadjusted percent change		Seasonally adjusted percent change		
		Mar. 2019	Feb. 2020	Mar. 2020	Mar. 2019-Mar. 2020	Feb. 2020-Mar. 2020	Dec. 2019-Jan. 2020	Jan. 2020-Feb. 2020	Feb. 2020-Mar. 2020
All items less food.....	86.212	253.643	258.165	257.382	1.5	-0.3	0.1	0.0	-0.5
All items less shelter.....	66.806	233.290	236.084	235.184	0.8	-0.4	0.0	0.0	-0.7
All items less food and shelter.....	53.018	226.909	229.390	228.099	0.5	-0.6	0.0	-0.1	-0.9
All items less food, shelter, and energy.....	46.501	232.222	235.659	235.539	1.4	-0.1	0.2	0.2	-0.2
All items less food, shelter, energy, and used cars and trucks.....	43.979	237.836	241.844	241.387	1.5	-0.2	0.2	0.1	-0.3
All items less medical care.....	91.152	242.776	246.445	245.778	1.2	-0.3	0.1	0.1	-0.5
All items less energy.....	93.483	260.505	265.734	265.896	2.1	0.1	0.2	0.2	0.0
Commodities.....	37.450	184.993	185.331	184.364	-0.3	-0.5	-0.2	-0.1	-1.0
Commodities less food, energy, and used cars and trucks.....	17.718	146.120	146.126	145.767	-0.2	-0.2	0.1	0.1	-0.5
Commodities less food.....	23.662	152.742	151.792	150.257	-1.6	-1.0	-0.4	-0.4	-1.9
Commodities less food and beverages.....	22.636	149.344	148.304	146.714	-1.8	-1.1	-0.4	-0.4	-2.0
Services.....	62.550	322.456	331.139	331.021	2.7	0.0	0.4	0.2	-0.1
Services less rent of shelter ¹	29.724	340.396	348.701	347.979	2.2	-0.2	0.2	0.2	-0.2
Services less medical care services.....	55.322	306.807	314.141	313.845	2.3	-0.1	0.3	0.2	-0.1
Durables.....	10.683	105.379	104.421	104.703	-0.6	0.3	-0.4	0.2	-0.1
Nondurables.....	26.767	225.714	227.015	225.113	-0.3	-0.8	-0.2	-0.1	-1.3
Nondurables less food.....	12.979	198.584	197.680	193.597	-2.5	-2.1	-0.5	-0.6	-3.0
Nondurables less food and beverages.....	11.953	195.255	194.122	189.714	-2.8	-2.3	-0.6	-0.6	-3.3
Nondurables less food, beverages, and apparel.....	9.037	242.842	241.692	234.822	-3.3	-2.8	-1.0	-0.9	-3.7
Nondurables less food and apparel.....	10.063	242.500	241.755	235.665	-2.8	-2.5	-0.9	-0.7	-3.3
Housing.....	42.149	263.886	270.281	270.273	2.4	0.0	0.3	0.2	0.0
Education and communication ²	6.746	137.082	139.256	139.199	1.5	0.0	0.3	0.1	0.1
Education ²	3.019	263.905	269.360	269.450	2.1	0.0	0.3	0.3	0.3
Communication ²	3.726	72.943	73.793	73.719	1.1	-0.1	0.2	0.0	0.0
Information and information processing ²	3.614	68.950	69.693	69.622	1.0	-0.1	0.2	0.0	0.0
Information technology, hardware and services ³	1.321	7.390	7.375	7.354	-0.5	-0.3	0.1	0.2	-0.1
Recreation ²	5.807	120.743	122.067	122.265	1.3	0.2	0.3	-0.3	0.1
Video and audio ²	1.517	105.119	106.034	106.466	1.3	0.4	0.3	-0.6	0.1
Pets, pet products and services ²	1.199	176.496	180.819	180.452	2.2	-0.2	0.1	0.1	-0.2
Photography ²	0.073	73.161	75.996	76.305	4.3	0.4	0.9	3.6	0.1
Food and beverages.....	14.814	257.430	261.487	262.320	1.9	0.3	0.2	0.4	0.3
Domestically produced farm food.....	6.343	250.216	251.833	252.974	1.1	0.5	0.1	0.4	0.5
Other services.....	11.653	357.332	364.767	365.516	2.3	0.2	0.4	0.0	0.3
Apparel less footwear.....	2.238	118.637	116.710	116.390	-1.9	-0.3	0.5	0.5	-1.8
Fuels and utilities.....	4.341	241.550	242.951	241.160	-0.2	-0.7	0.4	-0.3	-0.6
Household energy.....	3.255	199.429	199.117	196.998	-1.2	-1.1	0.5	-0.6	-0.9
Medical care.....	8.848	492.306	513.923	515.605	4.7	0.3	0.2	0.1	0.4
Transportation.....	15.582	208.836	207.772	203.854	-2.4	-1.9	-0.6	-0.5	-2.9
Private transportation.....	14.277	204.680	203.291	200.626	-2.0	-1.3	-0.7	-0.6	-2.4
New and used motor vehicles ²	7.268	99.975	99.028	99.527	-0.4	0.5	-0.4	0.2	-0.1
Utilities and public transportation.....	8.941	216.735	219.886	216.968	0.1	-1.3	0.2	0.2	-1.2
Household furnishings and operations.....	4.613	123.746	124.636	124.469	0.6	-0.1	-0.1	0.1	-0.1
Other goods and services.....	3.139	448.471	460.144	461.495	2.9	0.3	0.6	0.4	0.3
Personal care.....	2.552	232.888	237.978	238.175	2.3	0.1	0.7	0.4	0.1

¹ Indexes on a December 1982=100 base.

² Indexes on a December 1997=100 base.

³ Indexes on a December 1988=100 base.

Table 4. Consumer Price Index for All Urban Consumers (CPI-U): Selected areas, all items index, March 2020
 [1982-84=100, unless otherwise noted]

Area	Pricing Schedule ¹	Percent change to Mar. 2020 from:			Percent change to Feb. 2020 from:		
		Mar. 2019	Jan. 2020	Feb. 2020	Feb. 2019	Dec. 2019	Jan. 2020
U.S. city average.....	M	1.5	0.1	-0.2	2.3	0.7	0.3
Region and area size²							
Northeast.....	M	1.7	0.1	-0.2	2.4	1.0	0.3
Northeast - Size Class A.....	M	1.9	0.1	-0.1	2.5	1.0	0.3
Northeast - Size Class B/C ³	M	1.4	0.0	-0.3	2.2	1.0	0.3
New England ⁴	M	1.5	0.0	-0.2	2.5	0.9	0.2
Middle Atlantic ⁴	M	1.8	0.1	-0.2	2.3	1.0	0.3
Midwest.....	M	1.0	-0.2	-0.5	2.1	0.7	0.3
Midwest - Size Class A.....	M	1.3	-0.3	-0.5	2.3	0.7	0.2
Midwest - Size Class B/C ³	M	0.8	-0.2	-0.5	2.0	0.7	0.4
East North Central ⁴	M	1.0	-0.4	-0.6	2.0	0.6	0.1
West North Central ⁴	M	1.0	0.3	-0.4	2.3	0.8	0.7
South.....	M	1.1	0.1	-0.1	1.9	0.5	0.2
South - Size Class A.....	M	1.1	0.0	-0.2	1.9	0.5	0.2
South - Size Class B/C ³	M	1.0	0.1	-0.1	1.9	0.4	0.1
South Atlantic ⁴	M	1.3	0.1	-0.2	2.2	0.6	0.2
East South Central ⁴	M	0.4	0.0	0.0	1.0	0.3	0.0
West South Central ⁴	M	0.9	0.0	-0.1	1.6	0.3	0.1
West.....	M	2.5	0.2	-0.2	3.1	0.7	0.4
West - Size Class A.....	M	2.4	0.2	-0.3	3.2	0.9	0.4
West - Size Class B/C ³	M	2.5	0.3	0.0	2.9	0.4	0.4
Mountain ⁴	M	3.2	0.0	-0.1	4.0	0.3	0.2
Pacific ⁴	M	2.2	0.3	-0.2	2.8	0.8	0.5
Size classes							
Size Class A ⁵	M	1.7	0.1	-0.2	2.5	0.8	0.3
Size Class B/C ³	M	1.4	0.1	-0.2	2.2	0.6	0.3
Selected local areas							
Chicago-Naperville-Elgin, IL-IN-WI.....	M	1.1	-0.7	-0.7	2.0	1.0	0.0
Los Angeles-Long Beach-Anaheim, CA.....	M	1.9	-0.4	-0.7	3.4	1.1	0.3
New York-Newark-Jersey City, NY-NJ-PA.....	M	2.0	0.0	-0.2	2.4	1.0	0.2
Atlanta-Sandy Springs-Roswell, GA.....	2				2.9	0.8	
Baltimore-Columbia-Towson, MD ⁶	2				1.8	0.5	
Detroit-Warren-Dearborn, MI.....	2				2.6	0.5	
Houston-The Woodlands-Sugar Land, TX.....	2				1.5	0.6	
Miami-Fort Lauderdale-West Palm Beach, FL.....	2				1.4	0.4	
Philadelphia-Camden-Wilmington, PA-NJ-DE-MD.....	2				2.6	1.0	
Phoenix-Mesa-Scottsdale, AZ ⁷	2				4.4	0.6	
San Francisco-Oakland-Hayward, CA.....	2				2.9	0.9	
Seattle-Tacoma-Bellevue, WA.....	2				2.5	1.0	
St. Louis, MO-IL.....	2				2.1	0.8	
Urban Alaska.....	2				-0.3	0.0	
Boston-Cambridge-Newton, MA-NH.....	1	1.8	0.1				
Dallas-Fort Worth-Arlington, TX.....	1	1.0	0.0				
Denver-Aurora-Lakewood, CO.....	1	2.2	-0.3				
Minneapolis-St. Paul-Bloomington, MN-WI.....	1	1.2	-0.3				
Riverside-San Bernardino-Ontario, CA ⁴	1	2.3	0.0				
San Diego-Carlsbad, CA.....	1	1.8	0.0				
Tampa-St. Petersburg-Clearwater, FL ⁸	1	2.1	0.2				
Urban Hawaii.....	1	1.8	0.6				
Washington-Arlington-Alexandria, DC-VA-MD-WV ⁶	1	0.4	-0.4				

¹ Foods, fuels, and several other items are priced every month in all areas. Most other goods and services are priced as indicated: M - Every month. 1 - January, March, May, July, September, and November. 2 - February, April, June, August, October, and December.

² Regions defined as the four Census regions.

³ Indexes on a December 1996=100 base.

⁴ Indexes on a December 2017=100 base.

⁵ Indexes on a December 1986=100 base.

⁶ 1998 - 2017 indexes based on substantially smaller sample.

⁷ Indexes on a December 2001=100 base.

⁸ Indexes on a 1987=100 base.

NOTE: Local area indexes are byproducts of the national CPI program. Each local index has a smaller sample size than the national index and is, therefore, subject to substantially more sampling and other measurement error. As a result, local area indexes show greater volatility than the national index, although their long-term trends are similar. Therefore, the Bureau of Labor Statistics strongly urges users to consider adopting the national average CPI for use in their escalator clauses.

Table 5. Chained Consumer Price Index for All Urban Consumers (C-CPI-U) and the Consumer Price Index for All Urban Consumers (CPI-U): U.S. city average, all items index, March 2020
 [Percent changes]

Month Year	Unadjusted 1-month percent change		Unadjusted 12-month percent change	
	C-CPI-U ¹	CPI-U	C-CPI-U ¹	CPI-U
December 2000.....			2.6	3.4
December 2001.....			1.3	1.6
December 2002.....			2.0	2.4
December 2003.....			1.7	1.9
December 2004.....			3.2	3.3
December 2005.....			2.9	3.4
December 2006.....			2.3	2.5
December 2007.....			3.7	4.1
December 2008.....			0.2	0.1
December 2009.....			2.5	2.7
December 2010.....			1.3	1.5
December 2011.....			2.9	3.0
December 2012.....			1.5	1.7
December 2013.....			1.3	1.5
December 2014.....			0.5	0.8
December 2015.....			0.4	0.7
December 2016.....			1.8	2.1
December 2017.....			1.7	2.1
January 2018.....	0.5	0.5	1.6	2.1
February 2018.....	0.4	0.5	1.7	2.2
March 2018.....	0.2	0.2	1.9	2.4
April 2018.....	0.4	0.4	2.1	2.5
May 2018.....	0.3	0.4	2.3	2.8
June 2018.....	0.1	0.2	2.4	2.9
July 2018.....	0.0	0.0	2.6	2.9
August 2018.....	0.0	0.1	2.3	2.7
September 2018.....	0.1	0.1	1.9	2.3
October 2018.....	0.1	0.2	2.1	2.5
November 2018.....	-0.3	-0.3	1.8	2.2
December 2018.....	-0.4	-0.3	1.5	1.9
January 2019.....	0.2	0.2	1.3	1.6
February 2019.....	0.4	0.4	1.3	1.5
March 2019.....	0.5	0.6	1.5	1.9
April 2019.....	0.5	0.5	1.7	2.0
May 2019.....	0.2	0.2	1.5	1.8
June 2019.....	0.0	0.0	1.4	1.6
July 2019.....	0.2	0.2	1.6	1.8
August 2019.....	0.0	0.0	1.6	1.7
September 2019.....	0.1	0.1	1.5	1.7
October 2019.....	0.2	0.2	1.6	1.8
November 2019.....	-0.1	-0.1	1.8	2.1
December 2019.....	-0.1	-0.1	2.1	2.3
January 2020.....	0.4	0.4	2.3	2.5
February 2020.....	0.3	0.3	2.1	2.3
March 2020.....	-0.3	-0.2	1.3	1.5

¹ The C-CPI-U is designed to be a closer approximation to a cost-of-living index in that it, in its final form, accounts for any substitution that consumers make across item categories in response to changes in relative prices. Since the expenditure data required for the calculation of the C-CPI-U are available only with a time lag, the C-CPI-U is issued first in preliminary form using the latest available expenditure data at that time and is subject to four revisions.

Indexes are issued as initial estimates. Indexes are revised each quarter with the publication of January, April, July, and October data as updated expenditure estimates become available. The C-CPI-U indexes are updated quarterly until they become final. January-March indexes are final in January of the following year; April-June indexes are final in April of the following year; July-September indexes are final in July of the following year; October-December indexes are final in October of the following year.

Table 6. Consumer Price Index for All Urban Consumers (CPI-U): U.S. city average, by expenditure category, March 2020, 1-month analysis table

[1982-84=100, unless otherwise noted]

Expenditure category	Relative importance Feb. 2020	One Month				
		Seasonally adjusted percent change Feb. 2020-Mar. 2020	Seasonally adjusted effect on All Items Feb. 2020-Mar. 2020 ¹	Standard error, median price change ²	Largest (L) or Smallest (S) seasonally adjusted change since: ³	
					Date	Percent change
All items.....	100.000	-0.4		0.04	S-Jan.2015	-0.6
Food.....	13.788	0.3	0.047	0.07	S-Jan.2020	0.2
Food at home.....	7.601	0.5	0.038	0.12	—	—
Cereals and bakery products.....	0.983	0.1	0.001	0.30	S-Jan.2020	-0.4
Cereals and cereal products.....	0.301	0.7	0.002	0.54	L-Mar.2019	1.4
Flour and prepared flour mixes.....	0.042	1.0	0.000	0.83	L-Mar.2019	1.1
Breakfast cereal ⁴	0.137	1.8	0.002	0.74	L-Oct.2015	2.4
Rice, pasta, cornmeal ⁴	0.123	-0.2	0.000	0.98	S-Dec.2019	-1.8
Rice ^{4, 5, 6}		-0.2		1.14	S-Dec.2019	-2.1
Bakery products ⁴	0.682	0.2	0.001	0.36	S-Jan.2020	0.1
Bread ^{4, 5}	0.195	0.3	0.001	0.74	S-Jan.2020	-0.8
White bread ^{4, 6}		0.8		1.01	—	—
Bread other than white ^{4, 6}		0.5		0.77	S-Jan.2020	-1.0
Fresh biscuits, rolls, muffins ⁵	0.098	-0.5	-0.001	0.96	S-Jan.2020	-1.1
Cakes, cupcakes, and cookies.....	0.174	1.8	0.003	0.71	L-Jun.2018	2.3
Cookies ^{4, 6}		1.4		1.07	L-Jun.2018	3.7
Fresh cakes and cupcakes ^{4, 6}		0.8		0.78	L-Jan.2020	1.2
Other bakery products.....	0.214	-1.0	-0.002	0.52	S-Jan.2020	-1.8
Fresh sweetrolls, coffeecakes, doughnuts ^{4, 6}		-2.3		0.83	S-Oct.2016	-2.7
Crackers, bread, and cracker products ⁶		0.1		0.94	S-Jan.2020	-3.1
Frozen and refrigerated bakery products, pies, tarts, turnovers ⁶		-1.7		0.75	S-Aug.2014	-1.9
Meats, poultry, fish, and eggs.....	1.675	0.1	0.002	0.23	S-Jan.2020	0.0
Meats, poultry, and fish.....	1.576	0.0	0.000	0.24	S-Aug.2019	-0.4
Meats.....	0.989	-0.3	-0.003	0.29	S-Aug.2019	-0.7
Beef and veal.....	0.451	-0.1	-0.001	0.45	—	—
Uncooked ground beef ⁴	0.166	1.4	0.002	0.75	L-Jul.2017	1.8
Uncooked beef roasts ^{4, 5}	0.070	0.0	0.000	1.31	S-Jan.2020	-0.7
Uncooked beef steaks ⁵	0.174	-1.1	-0.002	0.70	S-Jun.2019	-1.5
Uncooked other beef and veal ^{4, 5}	0.041	-0.7	0.000	0.75	S-Aug.2019	-1.0
Pork.....	0.313	-0.6	-0.002	0.61	S-Aug.2019	-1.8
Bacon, breakfast sausage, and related products ⁵	0.129	-1.0	-0.001	0.83	S-Aug.2019	-2.7
Bacon and related products ⁶		-3.1		0.99	S-Aug.2019	-4.7
Breakfast sausage and related products ^{5, 6}		3.1		1.20	L-Dec.2013	4.6
Ham.....	0.065	1.2	0.001	1.81	S-Dec.2019	-1.1
Ham, excluding canned ⁶		0.2		1.73	S-Dec.2019	-1.1
Pork chops ⁴	0.048	-1.3	-0.001	1.57	S-Jan.2020	-1.7
Other pork including roasts, steaks, and ribs ⁵	0.071	-1.9	-0.001	1.30	S-Aug.2019	-2.4
Other meats.....	0.225	-0.2	0.000	0.54	—	—
Frankfurters ⁶		1.6		1.31	L-Jan.2020	4.8
Lunchmeats ^{5, 6}		-0.3		0.59	L-Jan.2020	0.9
Lamb and organ meats ^{4, 6}						
Lamb and mutton ^{4, 5, 6}						
Poultry ⁴	0.319	1.3	0.004	0.63	L-Dec.2019	1.7
Chicken ^{4, 5}	0.259	1.3	0.003	0.70	L-Dec.2019	1.8
Fresh whole chicken ^{4, 6}		1.2		1.43	L-Dec.2019	3.3
Fresh and frozen chicken parts ^{4, 6}		1.2		0.77	L-Dec.2019	1.2
Other uncooked poultry including turkey ⁵	0.060	1.6	0.001	1.43	S-Jan.2020	0.1
Fish and seafood.....	0.267	-0.5	-0.001	0.47	S-Jun.2019	-0.6
Fresh fish and seafood ⁵	0.136	0.1	0.000	0.71	S-Nov.2019	-0.6
Processed fish and seafood ⁵	0.131	-0.5	-0.001	0.65	—	—

See footnotes at end of table.

Table 6. Consumer Price Index for All Urban Consumers (CPI-U): U.S. city average, by expenditure category, March 2020, 1-month analysis table — Continued

[1982-84=100, unless otherwise noted]

Expenditure category	Relative importance Feb. 2020	One Month				
		Seasonally adjusted percent change Feb. 2020-Mar. 2020	Seasonally adjusted effect on All Items Feb. 2020-Mar. 2020 ¹	Standard error, median price change ²	Largest (L) or Smallest (S) seasonally adjusted change since: ³	
					Date	Percent change
Shelf stable fish and seafood ^{4, 6}		-0.6		0.97	L-Jan.2020	0.7
Frozen fish and seafood ⁶		-2.0		0.84	S-Oct.2016	-2.2
Eggs.....	0.099	2.8	0.003	0.98	L-Sep.2019	6.0
Dairy and related products.....	0.772	0.6	0.004	0.31	S-Jan.2020	0.2
Milk ⁵	0.209	0.2	0.000	0.48	L-Jan.2020	2.1
Fresh whole milk ⁶		0.1		0.70	S-Sep.2019	0.0
Fresh milk other than whole ^{5, 6}		0.1		0.52	L-Jan.2020	2.1
Cheese and related products ⁴	0.261	0.0	0.000	0.55	S-Jan.2020	-0.2
Ice cream and related products.....	0.108	2.2	0.002	0.86	L-Jan.2013	2.4
Other dairy and related products ^{4, 5}	0.194	1.4	0.003	0.56	S-Jan.2020	0.2
Fruits and vegetables.....	1.321	0.8	0.010	0.35	L-Mar.2019	1.1
Fresh fruits and vegetables.....	1.040	0.7	0.007	0.41	L-Mar.2019	1.0
Fresh fruits.....	0.530	1.0	0.005	0.56	L-Dec.2018	1.3
Apples.....	0.074	-1.9	-0.001	1.21	S-Nov.2019	-2.1
Bananas ⁴	0.077	0.3	0.000	0.80	L-Nov.2019	0.8
Citrus fruits ⁵	0.128	-1.1	-0.002	0.97	L-Jan.2020	-0.2
Oranges, including tangerines ⁵		-0.7		1.35	L-Jan.2020	-0.2
Other fresh fruits ⁵	0.251	4.6	0.011	0.97	L-Mar.2017	5.7
Fresh vegetables.....	0.510	0.3	0.001	0.59	L-Jan.2020	2.0
Potatoes.....	0.080	2.5	0.002	1.57	L-Jul.2019	2.6
Lettuce ⁴	0.061	-0.5	0.000	2.16	L-Jan.2020	0.5
Tomatoes.....	0.084	4.5	0.004	1.38	L-Jan.2020	5.1
Other fresh vegetables.....	0.285	-1.8	-0.005	0.74	S-May 2016	-2.7
Processed fruits and vegetables ⁵	0.280	1.1	0.003	0.49	L-Mar.2019	1.4
Canned fruits and vegetables ⁵	0.146	1.1	0.002	0.69	L-Mar.2019	1.8
Canned fruits ^{5, 6}		-0.4		0.88	S-Jan.2020	-1.4
Canned vegetables ^{5, 6}		1.8		0.98	L-Feb.2019	1.8
Frozen fruits and vegetables ⁵	0.084	0.3	0.000	0.94	L-Jan.2020	1.6
Frozen vegetables ⁵		-0.5		1.21	S-Dec.2019	-1.3
Other processed fruits and vegetables including dried ⁵	0.051	1.8	0.001	0.79	L-Aug.2018	1.9
Dried beans, peas, and lentils ^{4, 5, 6}		1.1		1.47	L-Oct.2019	2.9
Nonalcoholic beverages and beverage materials.....	0.914	0.9	0.009	0.38	L-May 2019	0.9
Juices and nonalcoholic drinks ⁵	0.650	1.1	0.007	0.45	L-Jan.2019	1.4
Carbonated drinks.....	0.273	1.3	0.004	0.83	L-Aug.2018	1.4
Frozen noncarbonated juices and drinks ^{4, 5}	0.006	0.3	0.000	0.65	L-Dec.2019	1.0
Nonfrozen noncarbonated juices and drinks ⁵	0.372	0.9	0.003	0.54	L-May 2019	0.9
Beverage materials including coffee and tea ⁵	0.264	1.1	0.003	0.63	—	—
Coffee.....	0.169	1.0	0.002	0.90	L-Nov.2019	1.6
Roasted coffee ⁶		1.3		0.99	L-Nov.2019	1.3
Instant coffee ^{4, 6}		-0.6		1.15	S-Jan.2020	-1.3
Other beverage materials including tea ^{4, 5}	0.094	0.1	0.000	0.74	S-Jan.2020	-0.7
Other food at home.....	1.937	0.6	0.011	0.24	S-Jan.2020	0.2
Sugar and sweets ⁴	0.265	0.6	0.002	0.64	L-Jan.2020	2.6
Sugar and sugar substitutes.....	0.036	1.7	0.001	0.84	L-May 2017	1.7
Candy and chewing gum ^{4, 5}	0.176	0.6	0.001	0.90	L-Jan.2020	2.4
Other sweets ⁵	0.053	0.7	0.000	0.79	L-Oct.2019	0.8
Fats and oils.....	0.213	1.1	0.002	0.51	L-Jan.2020	1.2
Butter and margarine ⁵	0.064	3.1	0.002	0.97	L-Oct.2015	4.1
Butter ⁶		2.6		1.57	L-Apr.2018	3.6
Margarine ⁶		2.7		0.92	L-Jul.2011	2.7
Salad dressing ⁵	0.051	1.8	0.001	0.93	L-May 2019	1.9
Other fats and oils including peanut butter ⁵	0.098	-0.6	-0.001	0.87	S-Dec.2019	-1.0

See footnotes at end of table.

Table 6. Consumer Price Index for All Urban Consumers (CPI-U): U.S. city average, by expenditure category, March 2020, 1-month analysis table — Continued

[1982-84=100, unless otherwise noted]

Expenditure category	Relative importance Feb. 2020	One Month				
		Seasonally adjusted percent change Feb. 2020-Mar. 2020	Seasonally adjusted effect on All Items Feb. 2020-Mar. 2020 ¹	Standard error, median price change ²	Largest (L) or Smallest (S) seasonally adjusted change since: ³	
					Date	Percent change
Peanut butter ^{4, 5, 6}		-0.2		1.28	S-Jan.2020	-3.6
Other foods.....	1.459	0.5	0.007	0.25	S-Jan.2020	-0.4
Soups.....	0.087	0.4	0.000	1.06	S-Dec.2019	-0.2
Frozen and freeze dried prepared foods.....	0.252	-0.1	0.000	0.69	S-Dec.2019	-1.1
Snacks ⁴	0.332	0.5	0.002	0.66	S-Jan.2020	-0.7
Spices, seasonings, condiments, sauces.....	0.290	1.6	0.005	0.51	L-May 2014	1.6
Salt and other seasonings and spices ^{5, 6}		2.2		1.05	L-Nov.2014	2.4
Olives, pickles, relishes ^{4, 5, 6}		0.9		0.63	L-Jan.2020	4.0
Sauces and gravies ^{5, 6}		1.7		0.87	S-Jan.2020	-0.9
Other condiments ⁶		1.8		1.12	L-Sep.2019	3.2
Baby food ^{4, 5}	0.042	0.2	0.000	0.78	S-Jan.2020	-1.2
Other miscellaneous foods ⁵	0.455	0.0	0.000	0.58	S-Jan.2020	-1.0
Prepared salads ^{4, 7, 6}		0.0		0.87	S-Jan.2020	-0.5
Food away from home ⁴	6.187	0.2	0.009	0.05	—	—
Full service meals and snacks ^{4, 5}	3.124	0.0	-0.001	0.06	S-Oct.2016	0.0
Limited service meals and snacks ^{4, 5}	2.666	0.4	0.010	0.10	L-Jan.2020	0.4
Food at employee sites and schools ⁵	0.145	0.4	0.001	0.11	L-Jul.2019	0.6
Food at elementary and secondary schools ^{4, 8, 6}		0.0		0.06	L-Jan.2020	0.0
Food from vending machines and mobile vendors ^{4, 5}	0.080	0.2	0.000	0.25	L-Jan.2020	0.3
Other food away from home ^{4, 5}	0.172	0.1	0.000	0.09	—	—
Energy.....	6.517	-5.8	-0.388	0.16	S-Jan.2015	-8.5
Energy commodities.....	3.422	-10.4	-0.373	0.20	S-Jan.2015	-15.8
Fuel oil and other fuels.....	0.161	-8.9	-0.014	0.43	S-Dec.2008	-9.1
Fuel oil.....	0.098	-13.7	-0.013	0.52	S-Nov.2008	-15.0
Propane, kerosene, and firewood ⁹	0.062	-0.7	0.000	0.60	S-Jan.2020	-3.0
Motor fuel.....	3.261	-10.4	-0.359	0.21	S-Feb.2016	-10.5
Gasoline (all types).....	3.186	-10.5	-0.355	0.21	S-Feb.2016	-10.5
Gasoline, unleaded regular ⁶		-10.9		0.68	S-Feb.2016	-10.9
Gasoline, unleaded midgrade ^{10, 6}		-8.2		0.73	S-Feb.2016	-10.4
Gasoline, unleaded premium ⁶		-7.2		0.76	S-Feb.2016	-9.1
Other motor fuels ⁵	0.075	-6.3	-0.005	0.24	S-Feb.2016	-6.6
Energy services.....	3.095	-0.5	-0.015	0.19	S-May 2019	-0.5
Electricity.....	2.417	-0.2	-0.006	0.20	S-Dec.2019	-0.2
Utility (piped) gas service.....	0.678	-1.4	-0.010	0.31	S-Feb.2019	-2.2
All items less food and energy.....	79.695	-0.1	-0.082	0.04	S-Jan.2010	-0.1
Commodities less food and energy commodities.....	20.240	-0.3	-0.067	0.11	S-Oct.2019	-0.4
Household furnishings and supplies ¹¹	3.737	-0.3	-0.010	0.22	S-Oct.2019	-0.3
Window and floor coverings and other linens ^{4, 5}	0.293	-0.7	-0.002	1.10	S-Nov.2019	-2.4
Floor coverings ^{4, 5}	0.064	-0.4	0.000	0.91	S-Nov.2019	-0.7
Window coverings ^{4, 5}	0.061	1.4	0.001	1.47	—	—
Other linens ^{4, 5}	0.169	-1.6	-0.003	1.72	S-Nov.2019	-3.9
Furniture and bedding ⁴	0.940	-1.1	-0.011	0.49	S-Aug.2019	-1.7
Bedroom furniture ⁴	0.333	-2.0	-0.007	0.62	S-Sep.2013	-2.0
Living room, kitchen, and dining room furniture ^{4, 5}	0.454	-0.6	-0.003	0.86	S-Dec.2019	-1.0
Other furniture ^{4, 5}	0.144	-0.9	-0.001	0.99	S-Nov.2019	-1.5
Infants' furniture ^{4, 8, 6}		-6.6		0.37	S-EVER	—
Appliances ⁵	0.211	0.4	0.001	0.58	L-Nov.2019	0.9
Major appliances ⁵	0.071	0.2	0.000	0.98	S-Jan.2020	-0.4
Laundry equipment ⁶		4.1		1.42	L-May 2018	4.5
Other appliances ⁵	0.138	0.2	0.000	0.70	L-Dec.2019	0.8
Other household equipment and furnishings ⁵	0.535	0.0	0.000	0.59	L-Aug.2019	0.3
Clocks, lamps, and decorator items ⁴	0.310	-0.6	-0.002	0.93	—	—

See footnotes at end of table.

Table 6. Consumer Price Index for All Urban Consumers (CPI-U): U.S. city average, by expenditure category, March 2020, 1-month analysis table — Continued

[1982-84=100, unless otherwise noted]

Expenditure category	Relative importance Feb. 2020	One Month				
		Seasonally adjusted percent change Feb. 2020-Mar. 2020	Seasonally adjusted effect on All Items Feb. 2020-Mar. 2020 ¹	Standard error, median price change ²	Largest (L) or Smallest (S) seasonally adjusted change since: ³	
					Date	Percent change
Indoor plants and flowers ¹²	0.090	2.1	0.002	0.64	L-Feb.2001	2.4
Dishes and flatware ^{4, 5}	0.055	1.0	0.001	1.39	L-Jan.2020	5.1
Nonelectric cookware and tableware ⁵	0.080	-1.6	-0.001	0.96	L-Jan.2020	1.1
Tools, hardware, outdoor equipment and supplies ⁵	0.874	0.1	0.001	0.43	L-Dec.2019	0.3
Tools, hardware and supplies ^{4, 5}	0.241	0.6	0.002	0.60	—	—
Outdoor equipment and supplies ⁵	0.447	-0.1	0.000	0.52	S-Jan.2020	-0.2
Housekeeping supplies ⁴	0.882	0.4	0.003	0.31	L-Mar.2019	0.7
Household cleaning products ^{4, 5}	0.347	1.1	0.004	0.34	L-Sep.2011	1.1
Household paper products ^{4, 5}	0.218	0.1	0.000	0.59	S-Jan.2020	-0.8
Miscellaneous household products ^{4, 5}	0.318	-0.3	-0.001	0.66	S-Dec.2019	-0.5
Apparel.....	2.916	-2.0	-0.059	0.52	S-EVER	—
Men's and boys' apparel.....	0.740	0.2	0.001	0.66	L-Jan.2020	0.6
Men's apparel.....	0.601	0.0	0.000	0.74	L-Jan.2020	2.3
Men's suits, sport coats, and outerwear.....	0.113	-0.8	-0.001	2.12	S-Dec.2019	-5.1
Men's underwear, nightwear, swimwear, and accessories ⁴	0.166	-0.7	-0.001	1.11	S-Dec.2019	-2.6
Men's shirts and sweaters ⁵	0.169	1.0	0.002	1.15	L-Dec.2019	1.2
Men's pants and shorts.....	0.146	0.5	0.001	1.22	L-Jan.2020	6.2
Boys' apparel.....	0.139	3.2	0.004	1.46	L-Sep.2018	3.4
Women's and girls' apparel.....	1.203	-3.0	-0.036	0.93	S-EVER	—
Women's apparel.....	1.000	-3.1	-0.031	1.09	S-EVER	—
Women's outerwear.....	0.067	-1.1	-0.001	1.87	S-Jan.2020	-5.5
Women's dresses.....	0.110	-5.7	-0.006	1.58	S-Mar.2009	-6.2
Women's suits and separates ⁵	0.513	-2.5	-0.013	1.54	S-Oct.2019	-4.7
Women's underwear, nightwear, swimwear, and accessories ⁵	0.300	-2.5	-0.008	1.38	S-Nov.2017	-2.5
Girls' apparel.....	0.203	-2.4	-0.005	1.95	S-Oct.2019	-3.1
Footwear.....	0.678	-2.8	-0.019	0.71	S-EVER	—
Men's footwear ⁴	0.235	-2.2	-0.005	0.99	S-Dec.2017	-3.6
Boys' and girls' footwear.....	0.143	-3.6	-0.005	1.31	S-Jul.2002	-4.5
Women's footwear.....	0.300	-1.9	-0.006	0.91	S-Apr.2018	-2.1
Infants' and toddlers' apparel.....	0.133	-4.3	-0.006	1.21	S-EVER	—
Jewelry and watches ⁹	0.162	0.1	0.000	2.07	L-Jan.2020	2.0
Watches ^{4, 9}	0.039	1.2	0.000	1.91	L-Jan.2020	2.4
Jewelry ⁹	0.123	-0.8	-0.001	2.46	L-Jan.2020	2.7
Transportation commodities less motor fuel ¹¹	6.903	0.1	0.006	0.11	S-Jan.2020	-0.4
New vehicles.....	3.750	-0.4	-0.015	0.19	S-Apr.2018	-0.4
New cars and trucks ^{5, 6}		-0.4		0.17	S-Apr.2018	-0.4
New cars ⁶		-0.5		0.17	S-Jul.2017	-0.8
New trucks ^{13, 6}		-0.6		0.20	S-Aug.2009	-0.8
Used cars and trucks.....	2.522	0.8	0.021	0.02	L-Jun.2019	1.3
Motor vehicle parts and equipment ⁴	0.396	-0.2	-0.001	0.36	S-Oct.2019	-0.2
Tires ⁴	0.251	-0.2	0.000	0.35	S-Jan.2020	-0.2
Vehicle accessories other than tires ^{4, 5}	0.146	-0.2	0.000	0.62	—	—
Vehicle parts and equipment other than tires ^{4, 6}		0.1		0.47	L-Jan.2020	1.8
Motor oil, coolant, and fluids ^{4, 6}		-3.7		1.56	S-Apr.2019	-5.2
Medical care commodities.....	1.620	0.0	0.000	0.30	L-Dec.2019	1.0
Medicinal drugs ¹¹	1.547	0.1	0.001	0.31	L-Dec.2019	1.3
Prescription drugs.....	1.171	-0.2	-0.002	0.32	L-Dec.2019	1.5
Nonprescription drugs ^{4, 11}	0.376	0.8	0.003	0.53	L-Aug.2019	1.6
Medical equipment and supplies ^{4, 11}	0.072	-0.2	0.000	0.59	L-Nov.2019	1.0
Recreation commodities ¹¹	2.038	-0.8	-0.017	0.22	S-Feb.2019	-0.8
Video and audio products ¹¹	0.273	0.3	0.001	0.38	L-Apr.2019	0.3

See footnotes at end of table.

Table 6. Consumer Price Index for All Urban Consumers (CPI-U): U.S. city average, by expenditure category, March 2020, 1-month analysis table — Continued

[1982-84=100, unless otherwise noted]

Expenditure category	Relative importance Feb. 2020	One Month				
		Seasonally adjusted percent change Feb. 2020-Mar. 2020	Seasonally adjusted effect on All Items Feb. 2020-Mar. 2020 ¹	Standard error, median price change ²	Largest (L) or Smallest (S) seasonally adjusted change since: ³	
					Date	Percent change
Televisions.....	0.096	-0.2	0.000	0.68	L-Jun.2017	1.8
Other video equipment ⁵	0.042	-0.7	0.000	0.88	S-Jan.2020	-1.4
Audio equipment ⁴	0.079	1.3	0.001	0.84	L-Apr.2019	4.2
Recorded music and music subscriptions ^{4, 5}	0.045	0.8	0.000	0.67	L-Oct.2019	0.8
Pets and pet products ⁴	0.651	-0.6	-0.004	0.24	S-Nov.2017	-0.7
Pet food ^{4, 5, 6}		-0.3		0.26	S-Jan.2020	-0.3
Purchase of pets, pet supplies, accessories ^{4, 5, 6}		-1.0		0.45	S-Nov.2015	-1.7
Sporting goods.....	0.594	-2.0	-0.012	0.56	S-Nov.1982	-2.0
Sports vehicles including bicycles ⁴	0.357	-2.1	-0.008	0.79	S-May 2019	-2.3
Sports equipment.....	0.227	-0.9	-0.002	0.53	S-Jul.2019	-1.4
Photographic equipment and supplies.....	0.027	0.0	0.000	0.88	S-Dec.2019	-1.1
Film and photographic supplies ^{4, 5, 6}						
Photographic equipment ^{5, 6}		-0.1		1.01	S-Dec.2019	-1.8
Recreational reading materials ⁴	0.118	-0.2	0.000	1.00	S-Dec.2019	-1.1
Newspapers and magazines ^{4, 5}	0.066	0.7	0.000	1.26	L-Jan.2020	2.4
Recreational books ^{4, 5}	0.050	-1.4	-0.001	1.25	S-Jun.2019	-1.6
Other recreational goods ⁵	0.375	-0.7	-0.002	0.48	L-Jan.2020	-0.2
Toys.....	0.290	-0.4	-0.001	0.50	L-Jan.2020	-0.3
Toys, games, hobbies and playground equipment ^{5, 6}		-0.4		0.68	L-Jan.2020	-0.4
Sewing machines, fabric and supplies ^{4, 5}	0.022	-7.1	-0.002	1.24	S-EVER	—
Music instruments and accessories ^{4, 5}	0.047	1.1	0.001	0.64	L-Nov.2019	2.0
Education and communication commodities ¹¹	0.516	0.4	0.002	0.46	S-Jan.2020	-1.2
Educational books and supplies.....	0.107	0.2	0.000	0.76	L-Nov.2019	0.2
College textbooks ^{4, 14, 6}		0.1		0.84	S-Jan.2020	-2.7
Information technology commodities ¹¹	0.409	0.4	0.002	0.53	S-Jan.2020	-1.1
Computers, peripherals, and smart home assistants ⁷	0.298	0.8	0.002	0.68	S-Jan.2020	-1.1
Computer software and accessories ^{4, 5}	0.019	-1.2	0.000	1.50	S-Jan.2020	-1.2
Telephone hardware, calculators, and other consumer information items ⁵	0.091	-0.4	0.000	0.81	L-Jul.2018	1.2
Alcoholic beverages.....	1.026	0.5	0.005	0.18	L-Nov.2014	0.7
Alcoholic beverages at home.....	0.575	0.7	0.004	0.27	L-May 2019	0.7
Beer, ale, and other malt beverages at home.....	0.221	0.8	0.002	0.34	—	—
Distilled spirits at home.....	0.093	-0.1	0.000	0.44	S-Nov.2019	-0.2
Whiskey at home ^{4, 6}		-0.9		0.90	S-Oct.2019	-1.8
Distilled spirits, excluding whiskey, at home ^{4, 6}		0.5		0.62	L-Jan.2020	1.0
Wine at home.....	0.261	0.9	0.002	0.47	L-May 2019	0.9
Alcoholic beverages away from home ⁴	0.451	0.0	0.000	0.22	S-Nov.2019	0.0
Beer, ale, and other malt beverages away from home ^{4, 5, 6}		-0.2		0.25	S-Oct.2019	-0.2
Wine away from home ^{4, 5, 6}		0.1		0.17	—	—
Distilled spirits away from home ^{4, 5, 6}		0.3		0.25	S-Jan.2020	0.2
Other goods ¹¹	1.484	0.3	0.004	0.21	S-Dec.2019	-0.4
Tobacco and smoking products.....	0.586	1.0	0.006	0.13	L-Mar.2019	1.2
Cigarettes ⁵	0.509	1.0	0.005	0.13	L-Mar.2019	1.3
Tobacco products other than cigarettes ^{4, 5}	0.059	0.3	0.000	0.39	—	—
Personal care products ⁴	0.693	-0.1	-0.001	0.28	S-Dec.2019	-1.1
Hair, dental, shaving, and miscellaneous personal care products ^{4, 5}	0.372	-0.3	-0.001	0.37	S-Dec.2019	-0.6
Cosmetics, perfume, bath, nail preparations and implements ⁴	0.313	0.2	0.000	0.44	S-Dec.2019	-1.9
Miscellaneous personal goods ⁵	0.205	-0.5	-0.001	1.05	L-Jan.2020	2.9
Stationery, stationery supplies, gift wrap ⁶		-0.6		1.05	S-May 2019	-0.6

See footnotes at end of table.

Table 6. Consumer Price Index for All Urban Consumers (CPI-U): U.S. city average, by expenditure category, March 2020, 1-month analysis table — Continued

[1982-84=100, unless otherwise noted]

Expenditure category	Relative importance Feb. 2020	One Month				
		Seasonally adjusted percent change Feb. 2020-Mar. 2020	Seasonally adjusted effect on All Items Feb. 2020-Mar. 2020 ¹	Standard error, median price change ²	Largest (L) or Smallest (S) seasonally adjusted change since: ³	
					Date	Percent change
Infants' equipment ^{4, 8, 6}		2.4		1.19	L-Jan.2020	16.1
Services less energy services.....	59.455	0.0	-0.019	0.04	S-Mar.2017	0.0
Shelter.....	33.194	0.0	0.013	0.05	S-Oct.2010	0.0
Rent of shelter ¹⁵	32.825	0.1	0.030	0.06	S-Oct.2019	0.1
Rent of primary residence.....	7.782	0.3	0.023	0.04	—	—
Lodging away from home ⁵	1.011	-6.8	-0.070	1.55	S-EVER	—
Housing at school, excluding board ¹⁵	0.117	0.2	0.000	0.04	—	—
Other lodging away from home including hotels and motels.....	0.894	-7.7	-0.070	1.76	S-EVER	—
Owners' equivalent rent of residences ¹⁵	24.032	0.3	0.063	0.04	L-Jan.2020	0.3
Owners' equivalent rent of primary residence ¹⁵ ..	22.826	0.3	0.059	0.04	L-Jan.2020	0.3
Tenants' and household insurance ^{4, 5}	0.369	-0.6	-0.002	0.07	S-Apr.2013	-1.0
Water and sewer and trash collection services ⁵	1.086	0.3	0.003	0.08	—	—
Water and sewerage maintenance.....	0.795	0.4	0.003	0.09	L-Oct.2019	0.4
Garbage and trash collection ^{4, 13}	0.291	0.2	0.001	0.15	S-Dec.2019	0.0
Household operations ^{4, 5}	0.877	0.1	0.001	0.21	S-Jan.2020	0.1
Domestic services ^{4, 5}	0.290	0.0	0.000	0.29	—	—
Gardening and lawn care services ^{4, 5}						
Moving, storage, freight expense ^{4, 5}	0.088	-0.4	0.000	0.60	S-Nov.2019	-2.4
Repair of household items ^{4, 5}	0.116	0.1	0.000	0.22	L-Jan.2020	0.5
Medical care services.....	7.228	0.5	0.037	0.17	L-Oct.2019	0.8
Professional services.....	3.630	0.3	0.012	0.13	L-Jun.2019	0.3
Physicians' services.....	1.804	0.3	0.006	0.17	L-Sep.2019	0.3
Dental services.....	0.988	0.4	0.004	0.10	L-Jun.2019	1.0
Eyeglasses and eye care ^{4, 9}	0.366	0.0	0.000	0.24	—	—
Services by other medical professionals ^{4, 9}	0.472	0.0	0.000	0.14	—	—
Hospital and related services.....	2.400	0.4	0.009	0.21	L-Jan.2020	0.7
Hospital services ¹⁶	2.208	0.4	0.009	0.24	L-Jan.2020	0.8
Inpatient hospital services ^{16, 6}		0.6		0.32	L-Jan.2020	0.6
Outpatient hospital services ^{9, 6}		0.2		0.25	L-Jan.2020	1.0
Nursing homes and adult day services ¹⁶	0.123	0.3	0.000	0.13	L-Dec.2019	0.3
Care of invalids and elderly at home ^{4, 8}	0.069	1.7	0.001	0.11	L-Dec.2007	3.0
Health insurance ^{4, 8}	1.199	1.3	0.015	0.20	S-Jun.2019	1.3
Transportation services.....	5.418	-1.9	-0.105	0.11	S-EVER	—
Leased cars and trucks ^{4, 14}	0.642	-0.6	-0.004	0.37	S-Dec.2019	-0.7
Car and truck rental ⁵	0.120	-6.9	-0.009	1.64	S-EVER	—
Motor vehicle maintenance and repair ⁴	1.079	0.6	0.007	0.19	S-Jan.2020	0.2
Motor vehicle body work ⁴	0.057	0.0	0.000	0.25	S-Jan.2020	-0.2
Motor vehicle maintenance and servicing ⁴	0.625	0.8	0.005	0.23	L-Aug.2019	1.2
Motor vehicle repair ^{4, 5}	0.338	0.4	0.001	0.26	S-Dec.2019	0.0
Motor vehicle insurance.....	1.700	0.6	0.011	0.11	L-Sep.2018	0.6
Motor vehicle fees ^{4, 5}	0.572	0.2	0.001	0.13	—	—
State motor vehicle registration and license fees ^{4, 5}	0.297	0.1	0.000	0.11	—	—
Parking and other fees ^{4, 5}	0.260	0.3	0.001	0.25	—	—
Parking fees and tolls ^{5, 6}		0.3		0.26	—	—
Automobile service clubs ^{4, 5, 6}		1.2		0.31	L-Nov.2016	9.9
Public transportation.....	1.305	-8.5	-0.111	0.37	S-EVER	—
Airline fares.....	0.820	-12.6	-0.104	0.57	S-EVER	—
Other intercity transportation.....	0.177	-4.0	-0.007	0.70	S-EVER	—
Intercity bus fare ^{4, 7, 6}		-2.1		1.47	S-Jan.2020	-16.3
Intercity train fare ^{4, 7, 6}						
Ship fare ^{4, 5, 6}		-1.4		0.75	S-Oct.2019	-1.4

See footnotes at end of table.

Table 6. Consumer Price Index for All Urban Consumers (CPI-U): U.S. city average, by expenditure category, March 2020, 1-month analysis table — Continued

[1982-84=100, unless otherwise noted]

Expenditure category	Relative importance Feb. 2020	One Month				
		Seasonally adjusted percent change Feb. 2020-Mar. 2020	Seasonally adjusted effect on All Items Feb. 2020-Mar. 2020 ¹	Standard error, median price change ²	Largest (L) or Smallest (S) seasonally adjusted change since: ³	
					Date	Percent change
Intracity transportation ⁴	0.304	0.2	0.001	0.35	S-Dec.2019	-1.1
Intracity mass transit ^{4, 11, 6}		0.0		0.13	S-Dec.2019	0.0
Recreation services ¹¹	3.769	0.6	0.024	0.17	L-Oct.2019	0.7
Video and audio services ¹¹	1.243	0.1	0.001	0.17	L-Jan.2020	0.4
Cable and satellite television service ¹³	1.162	0.1	0.001	0.19	L-Jan.2020	0.7
Video discs and other media, including rental of video ^{4, 5}	0.081	0.5	0.000	0.95	L-Sep.2019	0.8
Video discs and other media ^{4, 5, 6}		0.9		1.68	L-Jun.2019	1.3
Rental of video discs and other media ^{4, 5, 6}		0.8		0.76	L-Jun.2019	2.2
Pet services including veterinary ⁵	0.548	0.3	0.002	0.16	L-Jan.2020	0.3
Pet services ^{4, 5, 6}		0.1		0.24	S-Aug.2019	-0.4
Veterinarian services ^{5, 6}		0.4		0.25	L-Dec.2019	0.5
Photographers and photo processing ^{4, 5}	0.045	0.2	0.000	0.46	S-Jan.2020	0.2
Photographer fees ^{4, 5, 6}		0.0		0.62	S-Jan.2020	-0.3
Photo processing ^{4, 5, 6}		0.5		0.62	S-Dec.2019	-0.6
Other recreation services ⁵	1.932	1.1	0.022	0.31	L-Oct.2019	1.1
Club membership for shopping clubs, fraternal, or other organizations, or participant sports fees ^{4, 5}	0.698	0.8	0.006	0.35	L-Nov.2019	1.1
Admissions.....	0.700	1.7	0.012	0.69	L-Mar.2019	2.3
Admission to movies, theaters, and concerts ^{4, 5, 6}		0.5		0.54	S-Jan.2020	0.3
Admission to sporting events ^{4, 5, 6}		2.2		2.10	L-Nov.2019	3.7
Fees for lessons or instructions ^{4, 9}	0.212	0.0	0.000	0.43	S-Dec.2019	0.0
Education and communication services ¹¹	6.230	0.1	0.005	0.07	—	—
Tuition, other school fees, and childcare.....	2.912	0.3	0.008	0.10	—	—
College tuition and fees.....	1.569	0.2	0.004	0.16	—	—
Elementary and high school tuition and fees.....	0.424	0.4	0.002	0.06	L-Oct.2019	0.5
Day care and preschool ¹²	0.764	0.2	0.001	0.13	S-Jan.2020	0.1
Technical and business school tuition and fees ⁵	0.036	0.2	0.000	0.12	—	—
Postage and delivery services ⁵	0.112	0.2	0.000	0.03	S-Dec.2019	0.2
Postage.....	0.102	0.2	0.000	0.00	S-Dec.2019	0.1
Delivery services ⁵	0.010	-0.4	0.000	0.27	S-Jan.2020	-1.4
Telephone services ^{4, 5}	2.293	0.0	0.000	0.10	L-Jan.2020	0.3
Wireless telephone services ^{4, 5}	1.891	0.0	0.000	0.05	L-Jan.2020	0.0
Land-line telephone services ^{4, 11}	0.402	0.1	0.000	0.36	S-Apr.2019	0.1
Internet services and electronic information providers ⁵	0.901	-0.3	-0.003	0.22	S-Sep.2019	-0.6
Other personal services ^{4, 11}	1.654	0.2	0.003	0.13	S-Nov.2019	0.1
Personal care services ⁴	0.669	0.1	0.001	0.14	S-Sep.2019	0.1
Haircuts and other personal care services ^{4, 5}	0.669	0.1	0.001	0.14	S-Sep.2019	0.1
Miscellaneous personal services.....	0.986	0.1	0.001	0.15	S-Nov.2019	0.0
Legal services ^{4, 9}	0.251	0.0	0.000	0.12	S-Dec.2019	0.0
Funeral expenses ^{4, 9}	0.140	0.0	0.000	0.19	L-Jan.2020	0.3
Laundry and dry cleaning services ^{4, 5}	0.219	0.1	0.000	0.22	S-Nov.2019	0.1
Apparel services other than laundry and dry cleaning ^{4, 5}	0.030	1.6	0.000	0.36	L-Mar.2005	2.4
Financial services ⁹	0.233	0.0	0.000	0.20	S-Nov.2019	0.0
Checking account and other bank services ^{4, 5, 6}		1.2		0.00	L-Mar.2018	4.7
Tax return preparation and other accounting fees ^{4, 5, 6}		0.5		0.31	L-Jan.2020	2.0
Special aggregate indexes						

See footnotes at end of table.

Table 6. Consumer Price Index for All Urban Consumers (CPI-U): U.S. city average, by expenditure category, March 2020, 1-month analysis table — Continued

[1982-84=100, unless otherwise noted]

Expenditure category	Relative importance Feb. 2020	One Month				
		Seasonally adjusted percent change Feb. 2020-Mar. 2020	Seasonally adjusted effect on All Items Feb. 2020-Mar. 2020 ¹	Standard error, median price change ²	Largest (L) or Smallest (S) seasonally adjusted change since: ³	
					Date	Percent change
All items less food.....	86.212	-0.5	-0.470	0.04	S-Jan.2015	-0.7
All items less shelter.....	66.806	-0.7	-0.437	0.05	S-Jan.2015	-1.1
All items less food and shelter.....	53.018	-0.9	-0.484	0.06	S-Jan.2015	-1.4
All items less food, shelter, and energy.....	46.501	-0.2	-0.095	0.06	S-Mar.2017	-0.2
All items less food, shelter, energy, and used cars and trucks.....	43.979	-0.3	-0.116	0.07	S-EVER	-
All items less medical care.....	91.152	-0.5	-0.460	0.04	S-Jan.2015	-0.7
All items less energy.....	93.483	0.0	-0.035	0.04	S-Mar.2017	0.0
Commodities.....	37.450	-1.0	-0.394	0.07	S-Sep.2015	-1.0
Commodities less food, energy, and used cars and trucks.....	17.718	-0.5	-0.088	0.12	S-Aug.2001	-0.5
Commodities less food.....	23.662	-1.9	-0.441	0.09	S-Jan.2015	-3.2
Commodities less food and beverages.....	22.636	-2.0	-0.445	0.10	S-Jan.2015	-3.3
Services.....	62.550	-0.1	-0.034	0.04	S-Jan.2010	-0.2
Services less rent of shelter ¹⁵	29.724	-0.2	-0.048	0.06	S-Mar.2017	-0.3
Services less medical care services.....	55.322	-0.1	-0.059	0.04	S-Mar.2017	-0.1
Durables.....	10.683	-0.1	-0.009	0.12	S-Jan.2020	-0.4
Nondurables.....	26.767	-1.3	-0.356	0.08	S-Jan.2015	-2.5
Nondurables less food.....	12.979	-3.0	-0.396	0.15	S-Jan.2015	-4.9
Nondurables less food and beverages.....	11.953	-3.3	-0.397	0.16	S-Jan.2015	-5.3
Nondurables less food, beverages, and apparel.....	9.037	-3.7	-0.337	0.13	S-Sep.2015	-3.8
Nondurables less food and apparel.....	10.063	-3.3	-0.335	0.12	S-Sep.2015	-3.4
Housing.....	42.149	0.0	-0.017	0.05	S-Apr.2014	0.0
Education and communication ⁵	6.746	0.1	0.007	0.07	-	-
Education ⁵	3.019	0.3	0.008	0.10	-	-
Communication ⁵	3.726	0.0	-0.001	0.10	-	-
Information and information processing ⁵	3.614	0.0	-0.001	0.11	-	-
Information technology, hardware and services ¹⁷	1.321	-0.1	-0.001	0.24	S-Dec.2019	-0.3
Recreation ⁵	5.807	0.1	0.007	0.15	L-Jan.2020	0.3
Video and audio ⁵	1.517	0.1	0.002	0.17	L-Jan.2020	0.3
Pets, pet products and services ⁵	1.199	-0.2	-0.002	0.16	S-Aug.2019	-0.2
Photography ⁵	0.073	0.1	0.000	0.53	S-Dec.2019	-0.7
Food and beverages.....	14.814	0.3	0.052	0.07	S-Jan.2020	0.2
Domestically produced farm food.....	6.343	0.5	0.034	0.13	L-Mar.2017	0.5
Other services.....	11.653	0.3	0.031	0.07	L-Jan.2020	0.4
Apparel less footwear.....	2.238	-1.8	-0.040	0.64	S-Oct.2019	-2.1
Fuels and utilities.....	4.341	-0.6	-0.026	0.14	S-Dec.2015	-0.8
Household energy.....	3.255	-0.9	-0.029	0.18	S-Dec.2015	-1.1
Medical care.....	8.848	0.4	0.037	0.18	L-Dec.2019	0.5
Transportation.....	15.582	-2.9	-0.458	0.08	S-Jan.2015	-4.5
Private transportation.....	14.277	-2.4	-0.347	0.09	S-Sep.2015	-2.8
New and used motor vehicles ⁵	7.268	-0.1	-0.006	0.11	S-Jan.2020	-0.4
Utilities and public transportation.....	8.941	-1.2	-0.109	0.10	S-Jan.1966	-1.4
Household furnishings and operations.....	4.613	-0.1	-0.004	0.18	S-Jan.2020	-0.1
Other goods and services.....	3.139	0.3	0.008	0.12	S-Dec.2019	-0.1
Personal care ⁴	2.552	0.1	0.002	0.15	S-Dec.2019	-0.2

¹ The 'effect' of an item category is a measure of that item's contribution to the All items price change. For example, if the Food index had an effect of 0.40, and the All items index rose 1.2 percent, then the increase in food prices contributed 0.40 / 1.2, or 33.3 percent, to that All items increase. Said another way, had food prices been unchanged for that month the change in the All items index would have been 1.2 percent minus 0.40, or 0.8 percent. Effects can be negative as well. For example, if the effect of food was a negative 0.1, and the All items index rose 0.5 percent, the All items index actually would have been 0.1 percent higher (or 0.6 percent) had food prices been unchanged. Since food prices fell while prices overall were rising, the contribution of food to the All items price change was negative (in this case, -0.1 / 0.5, or minus 20 percent).

² A statistic's margin of error is often expressed as its point estimate plus or minus two standard errors. For example, if a CPI category rose 0.6 percent, and its standard error was 0.15 percent, the margin of error on this item's 1-month percent change would be 0.6 percent, plus or minus 0.3 percent.

³ If the current seasonally adjusted 1-month percent change is greater than the previous published 1-month percent change, then this column identifies the closest prior month with a 1-month percent change as (L)arge as or (L)arger than the current 1-month change. If the current 1-month percent change is smaller than the previous published 1-month percent change, the most recent month with a change as (S)mall or (S)maller than the current month change is identified. If the current and previous published 1-month percent changes are equal, a dash will appear. Standard numerical comparisons are used. For example, 0.8% is greater than 0.6%, -0.4% is less than -0.2%, and -0.2% is less than 0.0%. Note that a (L)arger change can be a smaller decline, for example, a -0.2% change is larger than a -0.4% change, but still represents a decline in the price index. Likewise, (S)maller changes can be increases, for example, a 0.6% change is smaller than 0.8%, but still represents an increase in the price index. In this context, a -0.2% change is considered to be smaller than a 0.0% change.

⁴ Not seasonally adjusted.

⁵ Indexes on a December 1997=100 base.

⁶ Special indexes based on a substantially smaller sample. These series do not contribute to the all items index aggregation and therefore do not have a relative importance or effect.

⁷ Indexes on a December 2007=100 base.

⁸ Indexes on a December 2005=100 base.

⁹ Indexes on a December 1986=100 base.

¹⁰ Indexes on a December 1993=100 base.

¹¹ Indexes on a December 2009=100 base.

¹² Indexes on a December 1990=100 base.

¹³ Indexes on a December 1983=100 base.

¹⁴ Indexes on a December 2001=100 base.

¹⁵ Indexes on a December 1982=100 base.

¹⁶ Indexes on a December 1996=100 base.

¹⁷ Indexes on a December 1988=100 base.

Table 7. Consumer Price Index for All Urban Consumers (CPI-U): U.S. city average, by expenditure category, March 2020, 12-month analysis table
 [1982-84=100, unless otherwise noted]

Expenditure category	Relative importance Feb. 2020	Twelve Month				
		Unadjusted percent change Mar. 2019- Mar. 2020	Unadjusted effect on All Items Mar. 2019- Mar. 2020 ¹	Standard error, median price change ²	Largest (L) or Smallest (S) unadjusted change since: ³	
					Date	Percent change
All items.....	100.000	1.5		0.08	S-Feb.2019	1.5
Food.....	13.788	1.9	0.263	0.15	L-Nov.2019	2.0
Food at home.....	7.601	1.1	0.084	0.19	L-May 2019	1.2
Cereals and bakery products.....	0.983	0.1	0.002	0.44	S-May 2018	-0.2
Cereals and cereal products.....	0.301	-1.0	-0.003	0.80	S-Oct.2018	-1.2
Flour and prepared flour mixes.....	0.042	-0.7	0.000	1.08	—	—
Breakfast cereal.....	0.137	-1.2	-0.002	1.01	L-Jan.2020	-0.1
Rice, pasta, cornmeal.....	0.123	-1.0	-0.001	1.35	S-Jan.2018	-2.0
Rice ^{4, 5}		-2.3		1.84	S-Dec.2019	-2.9
Bakery products.....	0.682	0.7	0.005	0.55	L-Nov.2019	1.5
Bread ⁴	0.195	2.3	0.004	0.98	L-Nov.2019	3.8
White bread ⁵		4.0		1.32	L-Nov.2019	4.6
Bread other than white ⁵		0.7		1.32	S-Jan.2020	0.6
Fresh biscuits, rolls, muffins ⁴	0.098	-1.4	-0.001	1.35	S-Jan.2020	-2.0
Cakes, cupcakes, and cookies.....	0.174	0.8	0.002	1.01	L-Jan.2020	1.0
Cookies ⁵		1.4		1.31	L-Oct.2019	1.5
Fresh cakes and cupcakes ⁵		-0.5		1.09	S-Dec.2019	-1.8
Other bakery products.....	0.214	0.0	0.000	0.89	S-Jan.2020	-0.5
Fresh sweetrolls, coffeecakes, doughnuts ⁵		-1.4		1.97	S-Nov.2016	-2.1
Crackers, bread, and cracker products ⁵		1.8		1.60	L-Dec.2019	2.3
Frozen and refrigerated bakery products, pies, tarts, turnovers ⁵		-1.3		0.81	S-Dec.2019	-1.3
Meats, poultry, fish, and eggs.....	1.675	2.3	0.037	0.33	L-Dec.2019	2.3
Meats, poultry, and fish.....	1.576	2.5	0.038	0.35	L-Dec.2019	2.6
Meats.....	0.989	3.3	0.031	0.44	S-Nov.2019	2.5
Beef and veal.....	0.451	3.8	0.016	0.59	S-Nov.2019	2.6
Uncooked ground beef.....	0.166	5.9	0.010	0.86	L-Jul.2015	9.4
Uncooked beef roasts ⁴	0.070	3.6	0.002	1.62	S-Oct.2019	3.1
Uncooked beef steaks ⁴	0.174	2.1	0.003	0.93	S-Oct.2019	1.8
Uncooked other beef and veal ⁴	0.041	2.7	0.001	1.19	S-Oct.2019	1.8
Pork.....	0.313	3.5	0.010	0.91	S-Jan.2020	3.2
Bacon, breakfast sausage, and related products ⁴	0.129	1.8	0.002	1.14	S-Sep.2019	1.2
Bacon and related products ⁵		-1.1		1.48	S-Feb.2019	-1.9
Breakfast sausage and related products ^{4, 5}		6.4		1.62	L-Dec.2014	7.3
Ham.....	0.065	8.2	0.005	3.14	S-Jan.2020	4.6
Ham, excluding canned ⁵		7.7		3.40	S-Jan.2020	4.3
Pork chops.....	0.048	3.2	0.001	2.19	S-Dec.2019	1.8
Other pork including roasts, steaks, and ribs ⁴	0.071	2.3	0.001	2.01	S-Jan.2020	1.6
Other meats.....	0.225	1.9	0.004	0.72	L-Jan.2020	2.5
Frankfurters ⁵		1.9		1.91	L-Jan.2020	4.2
Lunchmeats ^{4, 5}		1.9		0.88	L-Jan.2020	2.9
Lamb and organ meats ⁵						
Lamb and mutton ^{4, 5}						
Poultry.....	0.319	2.2	0.007	0.77	L-Dec.2017	2.5
Chicken ⁴	0.259	1.2	0.003	0.91	L-Dec.2019	1.4
Fresh whole chicken ⁵		1.5		1.77	L-Jan.2020	2.2
Fresh and frozen chicken parts ⁵		1.1		1.08	L-Jan.2019	1.3
Other uncooked poultry including turkey ⁴	0.060	7.1	0.004	2.42	L-Jul.2012	8.2
Fish and seafood.....	0.267	0.1	0.000	0.76	—	—
Fresh fish and seafood ⁴	0.136	1.4	0.002	1.11	L-Oct.2019	1.4
Processed fish and seafood ⁴	0.131	-1.2	-0.002	1.15	S-Feb.2018	-1.9
Shelf stable fish and seafood ⁵		0.9		1.59	L-Oct.2019	1.3

See footnotes at end of table.

Table 7. Consumer Price Index for All Urban Consumers (CPI-U): U.S. city average, by expenditure category, March 2020, 12-month analysis table — Continued

[1982-84=100, unless otherwise noted]

Expenditure category	Relative importance Feb. 2020	Twelve Month				
		Unadjusted percent change Mar. 2019-Mar. 2020	Unadjusted effect on All Items Mar. 2019-Mar. 2020 ¹	Standard error, median price change ²	Largest (L) or Smallest (S) unadjusted change since: ³	
					Date	Percent change
Frozen fish and seafood ⁵		-2.1		1.70	S-Feb.2018	-3.5
Eggs.....	0.099	-1.6	-0.001	1.58	L-Nov.2018	3.6
Dairy and related products.....	0.772	3.7	0.028	0.43	L-Jan.2015	3.8
Milk ⁴	0.209	4.9	0.010	0.78	S-Nov.2019	3.9
Fresh whole milk ⁵		5.1		1.41	S-Nov.2019	4.4
Fresh milk other than whole ^{4, 5}		4.2		1.25	S-Dec.2019	3.8
Cheese and related products.....	0.261	5.0	0.012	0.71	S-Jan.2020	3.5
Ice cream and related products.....	0.108	2.6	0.003	1.16	L-Apr.2015	2.7
Other dairy and related products ⁴	0.194	1.4	0.003	0.87	L-Jul.2019	1.6
Fruits and vegetables.....	1.321	-1.9	-0.024	0.58	S-Feb.2017	-4.7
Fresh fruits and vegetables.....	1.040	-2.4	-0.025	0.61	S-Feb.2017	-5.7
Fresh fruits.....	0.530	-3.5	-0.019	0.64	L-Dec.2019	-2.4
Apples.....	0.074	-8.8	-0.007	1.68	S-Aug.2015	-9.7
Bananas.....	0.077	-1.4	-0.001	1.27	S-Jul.2019	-1.6
Citrus fruits ⁴	0.128	-9.5	-0.014	1.55	S-Mar.2009	-9.7
Oranges, including tangerines ⁵		-10.8		2.14	S-Jun.2008	-11.3
Other fresh fruits ⁴	0.251	1.0	0.003	1.12	L-Mar.2019	1.5
Fresh vegetables.....	0.510	-1.3	-0.006	0.97	S-Dec.2019	-1.8
Potatoes.....	0.080	4.1	0.003	2.45	L-Jan.2020	5.3
Lettuce.....	0.061	-4.2	-0.003	2.84	S-Jun.2018	-7.2
Tomatoes.....	0.084	7.8	0.006	2.00	L-Jan.2018	16.5
Other fresh vegetables.....	0.285	-4.7	-0.013	1.12	S-Feb.2017	-7.3
Processed fruits and vegetables ⁴	0.280	0.2	0.001	0.94	S-Apr.2019	0.2
Canned fruits and vegetables ⁴	0.146	-0.7	-0.001	1.33	S-Mar.2018	-2.4
Canned fruits ^{4, 5}		-1.9		1.81	S-Mar.2018	-5.5
Canned vegetables ^{4, 5}		0.4		1.74	L-Jan.2020	2.0
Frozen fruits and vegetables ⁴	0.084	0.8	0.001	1.57	S-Dec.2019	0.3
Frozen vegetables ⁵		0.9		1.70	S-Dec.2019	0.3
Other processed fruits and vegetables including dried ⁴	0.051	2.6	0.001	1.31	L-Jul.2015	3.2
Dried beans, peas, and lentils ^{4, 5}		1.8		2.39	L-Jan.2020	2.0
Nonalcoholic beverages and beverage materials.....	0.914	1.4	0.013	0.56	L-Nov.2019	1.7
Juices and nonalcoholic drinks ⁴	0.650	1.5	0.010	0.71	L-Dec.2019	1.9
Carbonated drinks.....	0.273	1.6	0.005	1.43	L-Nov.2019	2.8
Frozen noncarbonated juices and drinks ⁴	0.006	-4.1	0.000	1.37	S-Jan.2005	-5.6
Nonfrozen noncarbonated juices and drinks ⁴	0.372	1.6	0.006	0.79	L-Dec.2019	2.3
Beverage materials including coffee and tea ⁴	0.264	1.1	0.003	0.82	L-Dec.2017	1.1
Coffee.....	0.169	0.3	0.001	1.08	L-Nov.2019	0.4
Roasted coffee ⁵		0.8		1.05	L-Dec.2017	1.3
Instant coffee ⁵		-3.1		2.32	S-Jan.2020	-3.4
Other beverage materials including tea ⁴	0.094	2.4	0.002	1.16	L-Mar.2009	2.4
Other food at home.....	1.937	1.4	0.029	0.33	L-Nov.2015	1.5
Sugar and sweets.....	0.265	2.6	0.007	0.80	S-Dec.2019	2.6
Sugar and sugar substitutes.....	0.036	5.9	0.002	1.49	L-Oct.2015	6.6
Candy and chewing gum ⁴	0.176	3.2	0.006	1.07	S-Dec.2019	2.5
Other sweets ⁴	0.053	-1.6	-0.001	1.22	S-Jan.2019	-2.1
Fats and oils.....	0.213	-0.3	0.000	0.77	L-Jun.2019	0.1
Butter and margarine ⁴	0.064	0.2	0.000	1.23	L-Jan.2020	0.7
Butter ⁵		0.7		1.96	L-Jan.2020	1.8
Margarine ⁵		2.0		1.35	L-Oct.2017	2.3
Salad dressing ⁴	0.051	2.7	0.001	1.42	L-Jun.2019	2.9
Other fats and oils including peanut butter ⁴	0.098	-2.2	-0.002	1.19	S-Jan.2020	-2.6
Peanut butter ^{4, 5}		-1.9		2.62	L-Jul.2019	0.8
Other foods.....	1.459	1.5	0.022	0.36	L-Nov.2015	1.7

See footnotes at end of table.

Table 7. Consumer Price Index for All Urban Consumers (CPI-U): U.S. city average, by expenditure category, March 2020, 12-month analysis table — Continued

[1982-84=100, unless otherwise noted]

Expenditure category	Relative importance Feb. 2020	Twelve Month				
		Unadjusted percent change Mar. 2019-Mar. 2020	Unadjusted effect on All Items Mar. 2019-Mar. 2020 ¹	Standard error, median price change ²	Largest (L) or Smallest (S) unadjusted change since: ³	
					Date	Percent change
Soups.....	0.087	3.2	0.003	1.43	L-Sep.2017	3.5
Frozen and freeze dried prepared foods.....	0.252	1.6	0.004	0.81	L-Oct.2015	1.9
Snacks.....	0.332	-0.3	0.000	0.81	L-Jun.2019	0.5
Spices, seasonings, condiments, sauces.....	0.290	1.8	0.006	0.77	L-Apr.2016	2.6
Salt and other seasonings and spices ^{4, 5}		1.6		1.22	L-Dec.2018	1.6
Olives, pickles, relishes ^{4, 5}				1.58	—	—
Sauces and gravies ^{4, 5}		2.3		1.28	L-Jun.2018	3.7
Other condiments ⁵		-0.1		1.77	L-Jan.2020	0.4
Baby food ⁴	0.042	3.6	0.002	2.13	L-Oct.2019	4.3
Other miscellaneous foods ⁴	0.455	2.1	0.008	0.74	S-Jan.2020	1.2
Prepared salads ^{6, 5}		5.4		1.29	S-Jan.2020	4.8
Food away from home.....	6.187	3.0	0.179	0.18	—	—
Full service meals and snacks ⁴	3.124	3.2	0.096	0.39	S-Jul.2019	3.2
Limited service meals and snacks ⁴	2.666	2.8	0.073	0.25	L-Jan.2020	2.9
Food at employee sites and schools ⁴	0.145	1.9	0.003	0.45	L-Apr.2019	2.3
Food at elementary and secondary schools ^{7, 5}		2.2		0.39	—	—
Food from vending machines and mobile vendors ⁴	0.080	3.6	0.003	1.05	S-Aug.2018	3.1
Other food away from home ⁴	0.172	1.8	0.004	0.47	S-May 2019	1.3
Energy.....	6.517	-5.7	-0.382	0.28	S-Aug.2016	-9.2
Energy commodities.....	3.422	-10.4	-0.366	0.33	S-Aug.2016	-17.3
Fuel oil and other fuels.....	0.161	-14.2	-0.025	0.83	S-May 2016	-16.1
Fuel oil.....	0.098	-20.1	-0.021	1.02	S-May 2016	-23.6
Propane, kerosene, and firewood ⁶	0.062	-4.6	-0.003	1.25	S-Nov.2019	-5.0
Motor fuel.....	3.261	-10.2	-0.341	0.34	S-Aug.2016	-17.8
Gasoline (all types).....	3.186	-10.2	-0.335	0.34	S-Aug.2016	-17.8
Gasoline, unleaded regular ⁵		-11.0		1.01	S-Aug.2016	-18.4
Gasoline, unleaded midgrade ^{9, 5}		-6.9		1.02	S-Feb.2019	-7.5
Gasoline, unleaded premium ⁵		-5.6		0.99	S-Feb.2019	-6.4
Other motor fuels ⁴	0.075	-8.1	-0.006	0.49	S-Oct.2019	-8.4
Energy services.....	3.095	-0.5	-0.017	0.46	S-Dec.2019	-1.2
Electricity.....	2.417	0.2	0.004	0.50	S-Dec.2019	-0.4
Utility (piped) gas service.....	0.678	-2.9	-0.021	0.70	S-Jan.2020	-3.2
All items less food and energy.....	79.695	2.1	1.659	0.09	S-Jun.2019	2.1
Commodities less food and energy commodities.....	20.240	-0.2	-0.024	0.21	S-Jan.2020	-0.3
Household furnishings and supplies ¹⁰	3.737	-0.4	-0.011	0.44	S-Aug.2018	-0.5
Window and floor coverings and other linens ⁴	0.293	0.7	0.004	1.76	S-Jan.2020	-1.4
Floor coverings ⁴	0.064	-1.2	-0.001	2.53	S-Nov.2019	-1.2
Window coverings ⁴	0.061	7.1	0.004	3.82	L-EVER	—
Other linens ⁴	0.169	-0.3	0.000	2.71	S-Jan.2020	-3.0
Furniture and bedding.....	0.940	-0.5	-0.005	0.94	S-Aug.2018	-0.7
Bedroom furniture.....	0.333	-0.8	-0.003	1.47	S-Sep.2018	-1.3
Living room, kitchen, and dining room furniture ⁴	0.454	1.0	0.004	1.78	S-Jan.2020	0.7
Other furniture ⁴	0.144	-5.2	-0.006	2.17	S-Dec.2016	-7.2
Infants' furniture ^{7, 5}				8.93	—	—
Appliances ⁴	0.211	-0.3	-0.001	1.76	L-Dec.2019	0.2
Major appliances ⁴	0.071	-1.9	-0.002	2.33	L-Sep.2019	-0.1
Laundry equipment ⁵		-1.4		2.81	L-Apr.2019	3.0
Other appliances ⁴	0.138	0.9	0.001	2.29	L-Jan.2020	1.4
Other household equipment and furnishings ⁴	0.535	-2.9	-0.014	1.43	L-Jan.2020	-1.6
Clocks, lamps, and decorator items.....	0.310	-4.8	-0.014	2.31	L-Jan.2020	-2.4
Indoor plants and flowers ¹¹	0.090	-0.2	0.000	1.94	L-Dec.2019	0.2
Dishes and flatware ⁴	0.055	9.5	0.005	4.67	L-EVER	—
Nonelectric cookware and tableware ⁴	0.080	-6.5	-0.005	3.13	S-Oct.2019	-7.1

See footnotes at end of table.

Table 7. Consumer Price Index for All Urban Consumers (CPI-U): U.S. city average, by expenditure category, March 2020, 12-month analysis table — Continued

[1982-84=100, unless otherwise noted]

Expenditure category	Relative importance Feb. 2020	Twelve Month				
		Unadjusted percent change Mar. 2019-Mar. 2020	Unadjusted effect on All Items Mar. 2019-Mar. 2020 ¹	Standard error, median price change ²	Largest (L) or Smallest (S) unadjusted change since: ³	
					Date	Percent change
Tools, hardware, outdoor equipment and supplies ⁴ ...	0.874	0.4	0.006	0.81	L-Jan.2020	0.4
Tools, hardware and supplies ⁴	0.241	-0.4	0.000	1.49	L-Nov.2019	0.7
Outdoor equipment and supplies ⁴	0.447	0.8	0.004	1.13	L-Jan.2020	1.6
Housekeeping supplies.....	0.882	-0.1	-0.001	0.51	S-May.2018	-0.3
Household cleaning products ⁴	0.347	0.2	0.001	0.71	L-Jan.2020	0.8
Household paper products ⁴	0.218	1.2	0.003	1.26	S-Oct.2018	0.6
Miscellaneous household products ⁴	0.318	-1.6	-0.004	1.24	—	—
Apparel.....	2.916	-1.6	-0.050	0.86	S-Nov.2019	-1.6
Men's and boys' apparel.....	0.740	-0.8	-0.007	1.76	L-Jan.2020	-0.5
Men's apparel.....	0.601	0.1	0.002	1.51	L-Jan.2020	2.1
Men's suits, sport coats, and outerwear.....	0.113	-4.1	-0.004	3.69	S-Sep.2018	-4.7
Men's underwear, nightwear, swimwear, and accessories.....	0.166	3.9	0.007	3.27	—	—
Men's shirts and sweaters ⁴	0.169	-3.9	-0.006	2.43	L-Jan.2020	-2.0
Men's pants and shorts.....	0.146	4.2	0.005	2.31	L-Jan.2020	6.6
Boys' apparel.....	0.139	-5.2	-0.009	5.37	L-Dec.2019	-4.0
Women's and girls' apparel.....	1.203	-2.6	-0.031	1.54	S-Jan.2020	-3.1
Women's apparel.....	1.000	-3.5	-0.038	1.74	S-Jan.2020	-4.0
Women's outerwear.....	0.067	-8.0	-0.006	4.11	L-Dec.2019	-6.7
Women's dresses.....	0.110	-10.0	-0.013	3.14	S-Sep.2019	-12.8
Women's suits and separates ⁴	0.513	-4.3	-0.024	2.49	S-Jan.2020	-5.5
Women's underwear, nightwear, swimwear, and accessories ⁴	0.300	1.9	0.006	2.54	S-Dec.2019	-1.4
Girls' apparel.....	0.203	3.3	0.007	3.27	L-Jul.2019	4.0
Footwear.....	0.678	-0.2	-0.002	1.44	S-Jul.2019	-0.5
Men's footwear.....	0.235	-1.3	-0.003	1.93	S-Jan.2020	-1.7
Boys' and girls' footwear.....	0.143	-0.4	-0.001	3.23	S-Dec.2018	-1.9
Women's footwear.....	0.300	0.8	0.002	1.86	S-Oct.2019	0.7
Infants' and toddlers' apparel.....	0.133	-8.0	-0.011	2.75	S-Mar.1954	-10.0
Jewelry and watches ⁸	0.162	2.0	0.001	3.57	S-Jan.2020	1.2
Watches ⁸	0.039	2.9	0.000	5.88	S-Nov.2019	1.8
Jewelry ⁸	0.123	1.1	0.000	4.18	L-Oct.2019	2.5
Transportation commodities less motor fuel ¹⁰	6.903	-0.1	-0.001	0.25	L-Dec.2019	-0.1
New vehicles.....	3.750	-0.4	-0.016	0.43	S-Jun.2018	-0.5
New cars and trucks ^{4, 5}		-0.4		0.39	S-Jun.2018	-0.5
New cars ⁵		0.0		0.52	S-Nov.2019	0.0
New trucks ^{12, 5}		-0.6		0.46	S-Dec.2018	-0.7
Used cars and trucks.....	2.522	0.1	0.009	0.06	L-Oct.2019	1.4
Motor vehicle parts and equipment.....	0.396	1.6	0.006	0.68	S-Jul.2019	1.4
Tires.....	0.251	0.4	0.001	0.83	S-Oct.2018	0.0
Vehicle accessories other than tires ⁴	0.146	3.5	0.005	1.13	S-Dec.2019	2.6
Vehicle parts and equipment other than tires ⁵		4.1		1.17	L-Jan.2020	4.1
Motor oil, coolant, and fluids ⁵		-1.2		1.97	S-Nov.2019	-2.3
Medical care commodities.....	1.620	1.3	0.023	0.79	S-Nov.2019	0.6
Medicinal drugs ¹⁰	1.547	1.3	0.022	0.82	S-Nov.2019	0.6
Prescription drugs.....	1.171	1.5	0.020	0.95	S-Nov.2019	0.5
Nonprescription drugs ¹⁰	0.376	0.6	0.002	1.00	L-Nov.2019	0.8
Medical equipment and supplies ¹⁰	0.072	1.3	0.001	1.73	L-Dec.2019	1.3
Recreation commodities ¹⁰	2.038	-1.1	-0.021	0.62	S-Jan.2020	-1.1
Video and audio products ¹⁰	0.273	-7.9	-0.017	0.81	L-Dec.2017	-7.2
Televisions.....	0.096	-16.8	-0.016	1.38	L-Feb.2019	-16.8
Other video equipment ⁴	0.042	-2.2	0.000	2.24	S-Jun.2019	-2.2
Audio equipment.....	0.079	0.1	0.001	2.28	L-Nov.2019	0.9
Recorded music and music subscriptions ⁴	0.045	-4.2	-0.002	2.26	L-Jan.2020	-3.9

See footnotes at end of table.

Table 7. Consumer Price Index for All Urban Consumers (CPI-U): U.S. city average, by expenditure category, March 2020, 12-month analysis table — Continued

[1982-84=100, unless otherwise noted]

Expenditure category	Relative importance Feb. 2020	Twelve Month				
		Unadjusted percent change Mar. 2019-Mar. 2020	Unadjusted effect on All Items Mar. 2019-Mar. 2020 ¹	Standard error, median price change ²	Largest (L) or Smallest (S) unadjusted change since: ³	
					Date	Percent change
Pets and pet products.....	0.651	1.6	0.009	0.73	S-Oct.2018	0.9
Pet food ^{4, 5}		1.8		0.63	S-Feb.2019	1.7
Purchase of pets, pet supplies, accessories ^{4, 5}		1.3		1.18	S-Jul.2018	0.6
Sporting goods.....	0.594	-0.3	-0.003	1.48	S-Jul.2019	-1.1
Sports vehicles including bicycles.....	0.357	-0.5	-0.003	2.36	S-Jul.2019	-0.7
Sports equipment.....	0.227	-0.1	0.000	1.42	S-Jan.2020	-2.0
Photographic equipment and supplies.....	0.027	9.8	0.003	1.95	L-Dec.1980	11.3
Film and photographic supplies ^{4, 5}						
Photographic equipment ^{4, 5}		9.1		1.71	S-Jan.2020	1.9
Recreational reading materials.....	0.118	5.8	0.007	1.66	S-Jan.2020	2.8
Newspapers and magazines ⁴	0.066	8.5	0.006	2.30	L-Jan.2019	10.5
Recreational books ⁴	0.050	1.4	0.001	2.36	S-Jan.2020	-1.9
Other recreational goods ⁴	0.375	-6.1	-0.020	1.29	S-Jul.2019	-6.5
Toys.....	0.290	-7.3	-0.018	1.49	L-Jan.2020	-7.3
Toys, games, hobbies and playground equipment ^{4, 5}		-8.0		2.03	S-Dec.2018	-8.4
Sewing machines, fabric and supplies ⁴	0.022	-11.2	-0.003	2.89	S-EVER	—
Music instruments and accessories ⁴	0.047	5.1	0.002	2.82	L-EVER	—
Education and communication commodities ¹⁰	0.516	-4.7	-0.025	1.05	L-Nov.2019	-4.2
Educational books and supplies.....	0.107	-2.7	-0.003	2.02	L-Dec.2019	-2.0
College textbooks ^{13, 5}		-2.9		1.97	L-Dec.2019	-1.7
Information technology commodities ¹⁰	0.409	-5.5	-0.022	1.23	L-Nov.2019	-5.1
Computers, peripherals, and smart home assistants ⁶	0.298	-3.0	-0.009	1.59	L-Nov.2019	-2.4
Computer software and accessories ⁴	0.019	-10.9	-0.003	2.89	S-Dec.2019	-11.2
Telephone hardware, calculators, and other consumer information items ⁴	0.091	-13.5	-0.010	1.92	L-Dec.2018	-11.2
Alcoholic beverages.....	1.026	1.4	0.015	0.38	L-Aug.2019	2.0
Alcoholic beverages at home.....	0.575	1.4	0.008	0.53	L-Sep.2019	1.5
Beer, ale, and other malt beverages at home.....	0.221	3.4	0.008	0.72	L-Nov.2009	3.6
Distilled spirits at home.....	0.093	-1.0	-0.001	1.03	L-Jan.2020	-0.2
Whiskey at home ⁵		-1.1		1.17	S-Nov.2018	-1.1
Distilled spirits, excluding whiskey, at home ⁵		-0.3		1.46	L-Jan.2020	-0.1
Wine at home.....	0.261	0.2	0.001	0.98	L-Nov.2019	0.4
Alcoholic beverages away from home.....	0.451	1.6	0.006	0.43	S-Jan.2020	1.3
Beer, ale, and other malt beverages away from home ^{4, 5}		0.0		0.82	S-Dec.2019	0.0
Wine away from home ^{4, 5}		1.8		1.00	L-Jul.2019	2.4
Distilled spirits away from home ^{4, 5}		3.5		0.60	S-Jan.2020	2.1
Other goods ¹⁰	1.484	3.1	0.046	0.45	—	—
Tobacco and smoking products.....	0.586	5.4	0.034	0.32	S-Jan.2020	5.4
Cigarettes ⁴	0.509	5.8	0.033	0.33	S-Dec.2019	5.8
Tobacco products other than cigarettes ⁴	0.059	1.3	0.001	1.18	L-Dec.2019	2.8
Personal care products.....	0.693	0.5	0.004	0.58	L-Aug.2016	0.9
Hair, dental, shaving, and miscellaneous personal care products ⁴	0.372	1.4	0.005	0.77	L-Nov.2019	1.4
Cosmetics, perfume, bath, nail preparations and implements.....	0.313	-0.7	-0.002	1.01	L-Aug.2019	-0.7
Miscellaneous personal goods ⁴	0.205	4.2	0.009	2.55	S-Sep.2019	0.0
Stationery, stationery supplies, gift wrap ⁵		5.0		2.41	S-Sep.2019	3.9
Infants' equipment ^{7, 5}		11.6		2.24	L-EVER	—
Services less energy services.....	59.455	2.8	1.682	0.11	S-Jul.2019	2.8
Shelter.....	33.194	3.0	0.996	0.15	S-Jun.2015	3.0
Rent of shelter ¹⁴	32.825	3.0	0.998	0.15	S-Jun.2015	3.0

See footnotes at end of table.

Table 7. Consumer Price Index for All Urban Consumers (CPI-U): U.S. city average, by expenditure category, March 2020, 12-month analysis table — Continued

[1982-84=100, unless otherwise noted]

Expenditure category	Relative importance Feb. 2020	Twelve Month				
		Unadjusted percent change Mar. 2019-Mar. 2020	Unadjusted effect on All Items Mar. 2019-Mar. 2020 ¹	Standard error, median price change ²	Largest (L) or Smallest (S) unadjusted change since: ³	
					Date	Percent change
Rent of primary residence.....	7.782	3.7	0.288	0.14	S-Dec.2019	3.7
Lodging away from home ⁴	1.011	-6.4	-0.060	2.54	S-Sep.2009	-6.9
Housing at school, excluding board ¹⁴	0.117	2.3	0.003	0.25	—	—
Other lodging away from home including hotels and motels.....	0.894	-7.5	-0.062	2.87	S-Sep.2009	-7.6
Owners' equivalent rent of residences ¹⁴	24.032	3.2	0.770	0.15	S-Jan.2019	3.2
Owners' equivalent rent of primary residence ¹⁴ ...	22.826	3.2	0.729	0.15	S-Jan.2019	3.2
Tenants' and household insurance ⁴	0.369	-0.5	-0.002	0.42	S-Nov.2007	-1.1
Water and sewer and trash collection services ⁴	1.086	3.2	0.035	0.33	—	—
Water and sewerage maintenance.....	0.795	3.1	0.025	0.40	—	—
Garbage and trash collection ¹²	0.291	3.5	0.010	0.66	S-Jan.2020	3.2
Household operations ⁴	0.877	4.5	0.040	0.71	L-Nov.2019	5.4
Domestic services ⁴	0.290	1.0	0.003	0.87	S-Jun.2019	0.8
Gardening and lawn care services ⁴						
Moving, storage, freight expense ⁴	0.088	2.3	0.002	2.20	S-Jan.2020	1.2
Repair of household items ⁴	0.116	5.7	0.006	0.90	L-Dec.2019	6.2
Medical care services.....	7.228	5.5	0.387	0.53	L-Jan.2008	5.7
Professional services.....	3.630	1.6	0.054	0.83	L-Dec.2019	1.6
Physicians' services.....	1.804	1.4	0.025	1.55	L-Dec.2019	1.4
Dental services.....	0.988	2.8	0.024	0.76	L-Dec.2019	3.0
Eyeglasses and eye care ⁹	0.366	0.6	0.002	0.64	L-Jan.2020	0.8
Services by other medical professionals ⁹	0.472	0.8	0.003	0.47	S-Dec.2019	0.8
Hospital and related services.....	2.400	4.2	0.105	0.52	L-Jul.2018	4.3
Hospital services ¹⁵	2.208	4.4	0.098	0.58	L-Jul.2018	4.6
Inpatient hospital services ^{15, 5}		4.0		0.84	—	—
Outpatient hospital services ^{8, 5}		3.6		1.14	L-Dec.2018	4.0
Nursing homes and adult day services ¹⁵	0.123	2.5	0.004	0.51	—	—
Care of invalids and elderly at home ⁷	0.069	3.1	0.002	0.93	L-Jul.2019	3.4
Health insurance ⁷	1.199	20.6	0.228	0.61	S-Jan.2020	20.5
Transportation services.....	5.418	-0.7	-0.040	0.33	S-Sep.1943	-0.8
Leased cars and trucks ¹³	0.642	-3.6	-0.023	0.98	—	—
Car and truck rental ⁴	0.120	3.6	0.003	2.41	S-Dec.2019	3.6
Motor vehicle maintenance and repair.....	1.079	3.4	0.037	0.59	S-Jan.2020	3.2
Motor vehicle body work.....	0.057	3.8	0.002	0.88	—	—
Motor vehicle maintenance and servicing.....	0.625	3.5	0.022	0.80	—	—
Motor vehicle repair ⁴	0.338	3.2	0.011	0.93	S-Jan.2020	2.6
Motor vehicle insurance.....	1.700	1.1	0.019	0.59	L-Apr.2019	1.4
Motor vehicle fees ⁴	0.572	2.7	0.015	0.46	L-Jan.2020	2.7
State motor vehicle registration and license fees ⁴	0.297	2.8	0.008	0.32	L-Jun.2016	2.8
Parking and other fees ⁴	0.260	2.6	0.006	0.83	L-Jan.2020	2.6
Parking fees and tolls ^{4, 5}		2.5		0.74	L-Dec.2019	2.5
Automobile service clubs ^{4, 5}				0.97	—	—
Public transportation.....	1.305	-7.2	-0.091	0.71	S-Sep.2009	-8.2
Airline fares.....	0.820	-10.6	-0.083	1.04	S-Sep.2009	-11.6
Other intercity transportation.....	0.177	-6.1	-0.011	1.70	S-Nov.2009	-6.7
Intercity bus fare ^{6, 5}		-5.2		6.41	S-EVER	—
Intercity train fare ^{6, 5}						
Ship fare ^{4, 5}		-7.7		1.95	S-Nov.2009	-8.1
Intracity transportation.....	0.304	1.1	0.003	0.64	S-Jan.2020	1.1
Intracity mass transit ^{10, 5}		1.8		1.11	S-Jan.2020	1.8
Recreation services ¹⁰	3.769	2.4	0.093	0.56	L-Jan.2020	2.6
Video and audio services ¹⁰	1.243	2.6	0.037	0.66	L-Jan.2020	2.9
Cable and satellite television service ¹²	1.162	3.4	0.046	0.66	L-Jan.2020	3.5

See footnotes at end of table.

Table 7. Consumer Price Index for All Urban Consumers (CPI-U): U.S. city average, by expenditure category, March 2020, 12-month analysis table — Continued

[1982-84=100, unless otherwise noted]

Expenditure category	Relative importance Feb. 2020	Twelve Month				
		Unadjusted percent change Mar. 2019-Mar. 2020	Unadjusted effect on All Items Mar. 2019-Mar. 2020 ¹	Standard error, median price change ²	Largest (L) or Smallest (S) unadjusted change since: ³	
					Date	Percent change
Video discs and other media, including rental of video ⁴	0.081	-9.6	-0.009	2.85	S-EVER	-
Video discs and other media ^{4, 5}		-16.0		5.58	L-Jan.2020	-12.6
Rental of video discs and other media ^{4, 5}		2.7		1.16	S-May 2019	2.0
Pet services including veterinary ⁴	0.548	3.1	0.014	0.63	-	-
Pet services ^{4, 5}		3.1		1.49	L-Aug.2019	3.3
Veterinarian services ^{4, 5}		3.3		0.53	S-Jan.2019	2.5
Photographers and photo processing ⁴	0.045	0.5	0.000	1.40	L-Mar.2019	1.1
Photographer fees ^{4, 5}		2.9		2.30	L-Aug.2016	3.0
Photo processing ^{4, 5}		-3.1		1.42	S-Dec.2018	-3.2
Other recreation services ⁴	1.932	2.2	0.042	1.03	L-Nov.2019	2.2
Club membership for shopping clubs, fraternal, or other organizations, or participant sports fees ⁴	0.698	2.8	0.019	0.72	L-Jan.2020	3.0
Admissions.....	0.700	2.4	0.017	2.01	S-Jan.2020	1.6
Admission to movies, theaters, and concerts ^{4, 5}		3.1		1.29	-	-
Admission to sporting events ^{4, 5}		2.7		4.22	S-Jan.2020	2.3
Fees for lessons or instructions ⁸	0.212	0.5	0.001	1.95	S-Oct.2019	0.3
Education and communication services ¹⁰	6.230	2.1	0.126	0.22	-	-
Tuition, other school fees, and childcare.....	2.912	2.3	0.067	0.33	S-Dec.2019	2.3
College tuition and fees.....	1.569	1.7	0.027	0.46	S-Dec.2019	1.7
Elementary and high school tuition and fees.....	0.424	2.7	0.009	0.49	L-Jan.2020	2.7
Day care and preschool ¹¹	0.764	3.5	0.027	0.46	-	-
Technical and business school tuition and fees ⁴	0.036	2.1	0.001	0.38	L-Dec.2018	2.1
Postage and delivery services ⁴	0.112	4.1	0.004	0.23	S-Jan.2019	3.1
Postage.....	0.102	4.3	0.004	0.25	-	-
Delivery services ⁴	0.010	1.3	0.000	0.84	S-Dec.2016	-2.0
Telephone services ⁴	2.293	1.8	0.039	0.29	-	-
Wireless telephone services ⁴	1.891	-0.1	-0.002	0.31	L-Jan.2020	-0.1
Land-line telephone services ¹⁰	0.402	7.9	0.041	0.72	S-Dec.2019	6.9
Internet services and electronic information providers ⁴	0.901	2.1	0.016	0.93	L-Jan.2020	2.2
Other personal services ¹⁰	1.654	2.8	0.045	0.36	L-Mar.2019	3.0
Personal care services.....	0.669	3.3	0.021	0.48	-	-
Haircuts and other personal care services ⁴	0.669	3.3	0.021	0.48	-	-
Miscellaneous personal services.....	0.986	2.4	0.024	0.47	L-Mar.2019	2.9
Legal services ⁸	0.251	0.6	0.001	0.93	-	-
Funeral expenses ⁸	0.140	1.6	0.002	0.63	S-Nov.2019	1.6
Laundry and dry cleaning services ⁴	0.219	3.3	0.008	0.69	S-Sep.2018	3.0
Apparel services other than laundry and dry cleaning ⁴	0.030	5.4	0.002	1.68	L-Mar.2019	5.6
Financial services ⁹	0.233	4.0	0.009	1.05	L-Feb.2019	9.1
Checking account and other bank services ^{4, 5}		2.2		0.22	L-Feb.2019	5.4
Tax return preparation and other accounting fees ^{4, 5}		7.4		1.83	L-Feb.2019	13.8
Special aggregate indexes						
All items less food.....	86.212	1.5	1.276	0.09	S-Feb.2019	1.5
All items less shelter.....	66.806	0.8	0.543	0.11	S-Sep.2019	0.8
All items less food and shelter.....	53.018	0.5	0.280	0.13	S-Jun.2019	0.5
All items less food, shelter, and energy.....	46.501	1.4	0.663	0.14	S-Jul.2019	1.3
All items less food, shelter, energy, and used cars and trucks.....	43.979	1.5	0.654	0.14	S-Sep.2019	1.5
All items less medical care.....	91.152	1.2	1.130	0.08	S-Sep.2016	1.2

See footnotes at end of table.

Table 7. Consumer Price Index for All Urban Consumers (CPI-U): U.S. city average, by expenditure category, March 2020, 12-month analysis table — Continued

[1982-84=100, unless otherwise noted]

Expenditure category	Relative importance Feb. 2020	Twelve Month				
		Unadjusted percent change Mar. 2019-Mar. 2020	Unadjusted effect on All Items Mar. 2019-Mar. 2020 ¹	Standard error, median price change ²	Largest (L) or Smallest (S) unadjusted change since: ³	
					Date	Percent change
All items less energy.....	93.483	2.1	1.922	0.08	S-Jul.2019	2.1
Commodities.....	37.450	-0.3	-0.126	0.13	S-Jan.2019	-0.3
Commodities less food, energy, and used cars and trucks.....	17.718	-0.2	-0.032	0.24	S-May 2019	-0.3
Commodities less food.....	23.662	-1.6	-0.389	0.19	S-Sep.2016	-1.6
Commodities less food and beverages.....	22.636	-1.8	-0.404	0.20	S-Sep.2016	-1.8
Services.....	62.550	2.7	1.666	0.10	S-Aug.2019	2.7
Services less rent of shelter ¹⁴	29.724	2.2	0.668	0.17	S-Dec.2019	2.2
Services less medical care services.....	55.322	2.3	1.279	0.11	S-Sep.2015	2.3
Durables.....	10.683	-0.6	-0.054	0.27	—	—
Nondurables.....	26.767	-0.3	-0.072	0.16	S-Sep.2019	-0.4
Nondurables less food.....	12.979	-2.5	-0.335	0.27	S-Feb.2019	-2.7
Nondurables less food and beverages.....	11.953	-2.8	-0.350	0.29	S-Feb.2019	-3.0
Nondurables less food, beverages, and apparel.....	9.037	-3.3	-0.300	0.25	S-Sep.2019	-3.3
Nondurables less food and apparel.....	10.063	-2.8	-0.286	0.23	S-Sep.2019	-2.9
Housing.....	42.149	2.4	1.017	0.13	S-Jul.2016	2.4
Education and communication ⁴	6.746	1.5	0.101	0.22	—	—
Education ⁴	3.019	2.1	0.064	0.34	S-Dec.2019	2.1
Communication ⁴	3.726	1.1	0.038	0.32	L-May 2009	1.3
Information and information processing ⁴	3.614	1.0	0.033	0.33	L-May 2009	1.2
Information technology, hardware and services ¹⁶	1.321	-0.5	-0.005	0.77	L-Apr.2019	-0.4
Recreation ⁴	5.807	1.3	0.073	0.47	S-Sep.2019	1.0
Video and audio ⁴	1.517	1.3	0.020	0.58	L-Dec.2019	1.6
Pets, pet products and services ⁴	1.199	2.2	0.023	0.51	S-Nov.2018	2.2
Photography ⁴	0.073	4.3	0.003	1.34	L-EVER	—
Food and beverages.....	14.814	1.9	0.278	0.14	L-Nov.2019	1.9
Domestically produced farm food.....	6.343	1.1	0.071	0.21	L-Oct.2019	1.1
Other services.....	11.653	2.3	0.265	0.23	L-Jan.2020	2.4
Apparel less footwear.....	2.238	-1.9	-0.048	1.05	S-Jan.2020	-1.9
Fuels and utilities.....	4.341	-0.2	-0.007	0.34	S-Dec.2019	-0.2
Household energy.....	3.255	-1.2	-0.042	0.43	S-Aug.2019	-1.2
Medical care.....	8.848	4.7	0.410	0.43	L-Sep.2016	4.9
Transportation.....	15.582	-2.4	-0.381	0.16	S-Aug.2016	-4.0
Private transportation.....	14.277	-2.0	-0.290	0.17	S-Aug.2016	-4.2
New and used motor vehicles ⁴	7.268	-0.4	-0.026	0.26	L-Oct.2019	0.3
Utilities and public transportation.....	8.941	0.1	0.011	0.23	S-Jun.2019	0.1
Household furnishings and operations.....	4.613	0.6	0.028	0.37	S-Jun.2018	0.3
Other goods and services.....	3.139	2.9	0.092	0.30	L-Aug.2010	2.9
Personal care.....	2.552	2.3	0.058	0.37	L-May 2018	2.3

¹ The 'effect' of an item category is a measure of that item's contribution to the All items price change. For example, if the Food index had an effect of 0.40, and the All items index rose 1.2 percent, then the increase in food prices contributed 0.40 / 1.2, or 33.3 percent, to that All items increase. Said another way, had food prices been unchanged for that year the change in the All items index would have been 1.2 percent minus 0.40, or 0.8 percent. Effects can be negative as well. For example, if the effect of food was a negative 0.1, and the All items index rose 0.5 percent, the All items index actually would have been 0.1 percent higher (or 0.6 percent) had food prices been unchanged. Since food prices fell while prices overall were rising, the contribution of food to the All items price change was negative (in this case, -0.1 / 0.5, or minus 20 percent).

² A statistic's margin of error is often expressed as its point estimate plus or minus two standard errors. For example, if a CPI category rose 2.6 percent, and its standard error was 0.25 percent, the margin of error on this item's 12-month percent change would be 2.6 percent, plus or minus 0.5 percent.

³ If the current 12-month percent change is greater than the previous published 12-month percent change, then this column identifies the closest prior month with a 12-month percent change as (L)arge as or (L)arger than the current 12-month change. If the current 12-month percent change is smaller than the previous published 12-month percent change, the most recent month with a change as (S)mall or (S)maller than the current month change is identified. If the current and previous published 12-month percent changes are equal, a dash will appear. Standard numerical comparison is used. For example, 2.0% is greater than 0.6%, -4.4% is less than -2.0%, and -2.0% is less than 0.0%. Note that a (L)arger change can be a smaller decline, for example, a -0.2% change is larger than a -0.4% change, but still represents a decline in the price index. Likewise, (S)maller changes can be increases, for example, a 0.6% change is smaller than 0.8%, but still represents an increase in the price index. In this context, a -0.2% change is considered to be smaller than a 0.0% change.

⁴ Indexes on a December 1997=100 base.

- ⁵ Special indexes based on a substantially smaller sample. These series do not contribute to the all items index aggregation and therefore do not have a relative importance or effect.
- ⁶ Indexes on a December 2007=100 base.
- ⁷ Indexes on a December 2005=100 base.
- ⁸ Indexes on a December 1986=100 base.
- ⁹ Indexes on a December 1993=100 base.
- ¹⁰ Indexes on a December 2009=100 base.
- ¹¹ Indexes on a December 1990=100 base.
- ¹² Indexes on a December 1983=100 base.
- ¹³ Indexes on a December 2001=100 base.
- ¹⁴ Indexes on a December 1982=100 base.
- ¹⁵ Indexes on a December 1996=100 base.
- ¹⁶ Indexes on a December 1988=100 base.