



NEWS RELEASE



**Transmission of material in this release is embargoed until
8:30 a.m. (EST) Thursday, January 19, 2012**

USDL-12-0061

Technical information: (202) 691-7000 • Reed.Steve@bls.gov • www.bls.gov/cpi
Media Contact: (202) 691-5902 • PressOffice@bls.gov

CONSUMER PRICE INDEX – DECEMBER 2011

The Consumer Price Index for All Urban Consumers (CPI-U) was unchanged in December on a seasonally adjusted basis, the U.S. Bureau of Labor Statistics reported today. Over the last 12 months, the all items index increased 3.0 percent before seasonal adjustment.

Similar to last month, the energy index declined in December and offset increases in other indexes. The gasoline index declined for the third month in a row and the household energy index declined as well. The food index rose in December, with the index for food at home turning up after declining last month.

The index for all items less food and energy increased 0.1 percent in December after rising 0.2 percent in November. The indexes for shelter, recreation, medical care, and tobacco all posted increases, while the indexes for used cars and trucks, new vehicles, and apparel all declined.

The all items index has risen 3.0 percent over the last 12 months, a decline from last month's 3.4 percent figure. Recent declines in the energy index have brought its 12-month change down to 6.6 percent from 19.3 percent in September. The 12-month change in the index for all items less food and energy held at 2.2 percent, while the 12-month change in the food index edged up from 4.6 percent to 4.7 percent.

Chart 1. One-month percent change in CPI for All Urban Consumers (CPI-U), seasonally adjusted, Dec. 2010 - Dec. 2011
Percent change

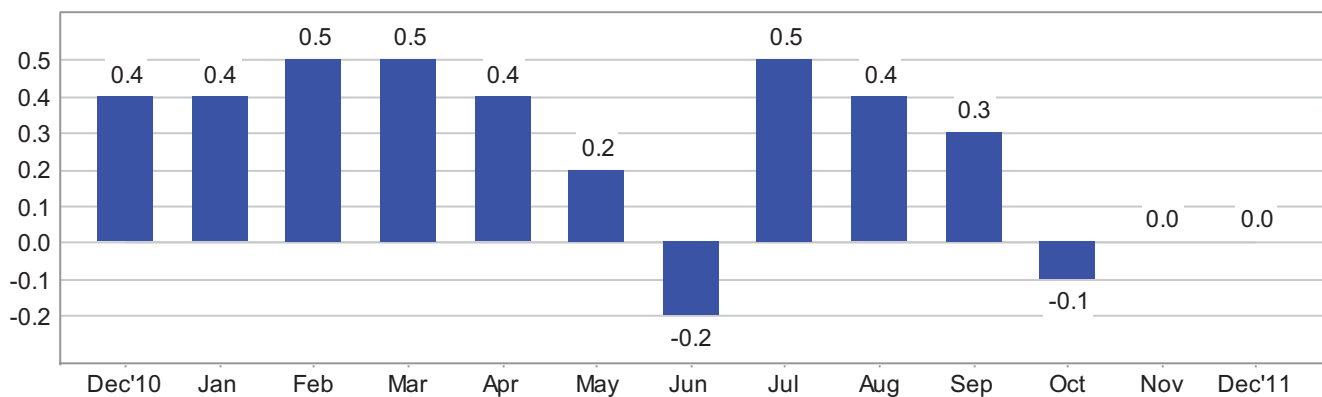


Chart 2. 12-month percent change in CPI for All Urban Consumers (CPI-U), not seasonally adjusted, Dec. 2010 - Dec. 2011

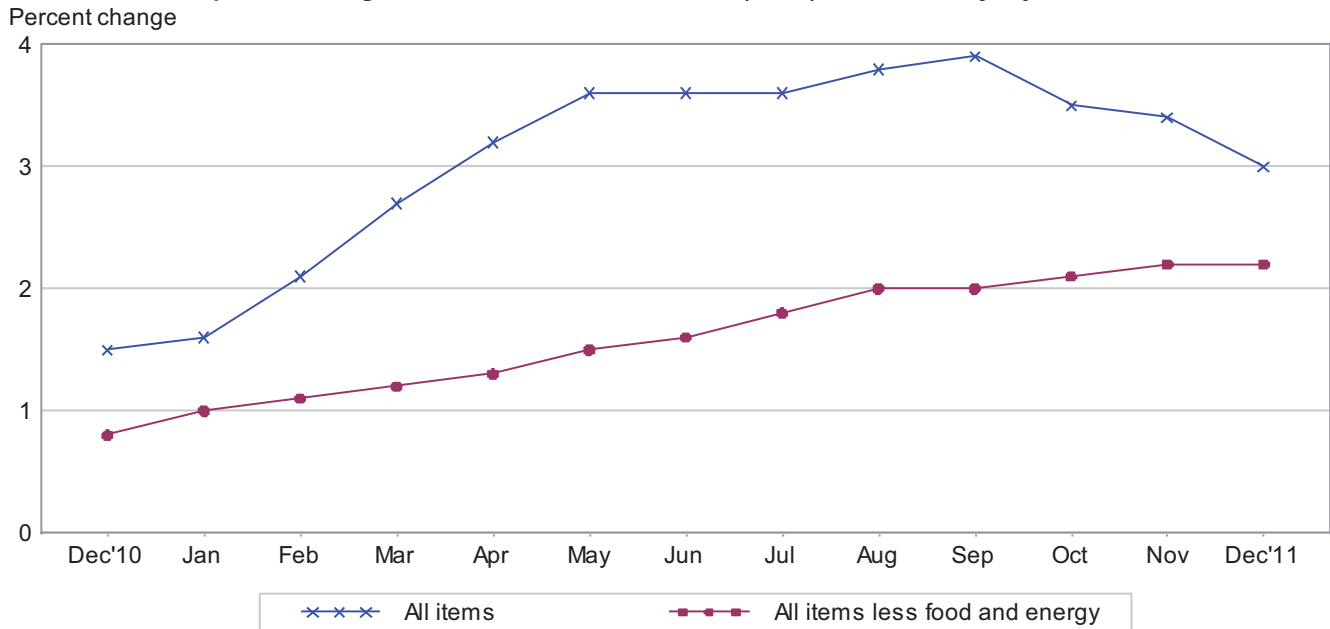


Table A. Percent changes in CPI for All Urban Consumers (CPI-U): U.S. city average

	Seasonally adjusted changes from preceding month							Un-adjusted 12-mos. ended Dec. 2011
	June 2011	July 2011	Aug. 2011	Sep. 2011	Oct. 2011	Nov. 2011	Dec. 2011	
All items	-.2	.5	.4	.3	-.1	.0	.0	3.0
Food2	.4	.5	.4	.1	.1	.2	4.7
Food at home2	.6	.6	.6	.1	-.1	.3	6.0
Food away from home ¹3	.2	.4	.2	.2	.3	.2	2.9
Energy	-4.4	2.8	1.2	2.0	-2.0	-1.6	-1.3	6.6
Energy commodities	-6.3	4.3	1.6	2.7	-2.9	-2.1	-1.9	10.6
Gasoline (all types)	-6.8	4.7	1.9	2.9	-3.1	-2.4	-2.0	9.9
Fuel oil ¹	-2.2	-1.7	-.4	-.7	-.5	2.7	-1.0	18.0
Energy services	-1.1	.4	.4	.7	-.4	-.7	-.3	.8
Electricity	-1.6	.8	-.1	.7	.4	.4	-.2	2.2
Utility (piped) gas service4	-1.2	2.2	.8	-3.0	-4.4	-.8	-3.7
All items less food and energy3	.2	.2	.1	.1	.2	.1	2.2
Commodities less food and energy								
commodities5	.3	.4	-.2	-.1	.1	-.2	2.2
New vehicles6	.0	.0	.0	-.3	-.3	-.2	3.2
Used cars and trucks	1.6	.7	.9	-.6	-.6	-.1	-.9	4.0
Apparel	1.4	1.2	1.1	-1.1	.4	.6	-.1	4.6
Medical care commodities ¹	-.1	.0	.1	.2	.3	.2	.2	3.2
Services less energy services1	.2	.2	.2	.2	.2	.3	2.3
Shelter2	.3	.2	.1	.2	.2	.2	1.9
Transportation services	-.3	-.1	.2	.5	.1	.1	.1	2.5
Medical care services3	.3	.3	.2	.5	.5	.4	3.6

¹ Not seasonally adjusted.

Year in Review

The CPI rose 3.0 percent in 2011 after a 1.5 percent increase in 2010. This was the largest December-December increase since 2007.

The energy index increased 6.6 percent in 2011, a deceleration from the 2010 increase of 7.7 percent. The gasoline index, which rose 13.8 percent in 2010, increased 9.9 percent in 2011. In contrast, the household energy index accelerated in 2011, rising 1.8 percent after a 0.8 percent increase in 2010. The fuel oil index rose 18.0 percent and the electricity index increased 2.2 percent, although the index for natural gas declined for the third straight year, falling 3.7 percent.

The index for food accelerated in 2011, rising 4.7 percent compared to a 1.5 percent increase in 2010. The index for food at home rose 6.0 percent in 2011 compared to 1.7 percent in 2010. All six major grocery store food group indexes rose in 2011, with increases ranging from 2.3 percent (fruits and vegetables) to 8.1 percent (dairy and related products). The index for food away from home rose 2.9 percent in 2011 after increasing 1.3 percent in 2010.

The index for all items less food and energy also accelerated in 2011, increasing 2.2 percent after its historical low 2010 increase of 0.8 percent. This was the largest increase since 2007. Several indexes turned up in 2011. The apparel index rose 4.6 percent after a 1.1 percent decline the previous year. Similarly, the new vehicles index rose 3.2 percent in 2011 after a slight decline in 2010. The indexes for recreation and household furnishings and operations also rose in 2011 after declining in 2010. A number of other indexes rose more quickly in 2011 than in 2010. The shelter index accelerated notably, advancing 1.9 percent in 2011 after rising only 0.4 percent the previous year. The indexes for used cars and trucks, medical care, education, and personal care also rose more quickly in 2011 than in 2010. In contrast, the indexes for tobacco and airline fare posted smaller increases in 2011 than 2010.

Consumer Price Index Data for December 2011

Food

The food index rose 0.2 percent in December after a 0.1 percent increase in November. The index for food at home, which fell 0.1 percent in November, rose 0.3 percent in December as four of the six major grocery store food group indexes increased. The index for meats, poultry, fish, and eggs rose the most, increasing 0.7 percent, even though the index for eggs declined. Also rising in December were the indexes for cereals and bakery products and for nonalcoholic beverages, each increasing 0.3 percent, while the index for other food at home rose 0.4 percent. In contrast, the fruits and vegetables index decreased 0.5 percent in December as the fresh vegetables index fell 1.4 percent, and the index for dairy and related products declined 0.1 percent. The index for food away from home, which rose 0.3 percent in November, increased 0.2 percent in December.

Energy

The energy index declined for the third month in a row, falling 1.3 percent in December as all of its major component indexes declined. The gasoline index, which fell 2.4 percent in November, declined 2.0 percent in December. (Before seasonal adjustment, gasoline prices fell 4.0 percent in December.) The household energy index also declined, falling 0.4 percent in December, the same decrease as

November. The index for fuel oil fell 1.0 percent, the natural gas index declined 0.8 percent, and the electricity index decreased 0.2 percent.

All items less food and energy

The index for all items less food and energy increased 0.1 percent in December after rising 0.2 percent in November. The shelter index rose 0.2 percent for the third month in a row. The rent index increased 0.3 percent and the index for owners' equivalent rent advanced 0.2 percent. The medical care index continued to rise significantly; its 0.4 percent increase in December was the third in a row of at least that size. The medical care services index rose 0.4 percent with the hospital services index up 0.5 percent. The recreation index increased 0.4 percent in December and the indexes for tobacco, household furnishings and operations, and airline fares posted increases as well. In contrast, the index for used cars and trucks declined for the fourth month in a row, falling 0.9 percent, while the index for new vehicles fell 0.2 percent, its third consecutive decline. The apparel index fell 0.1 percent in December after increasing in seven of the last eight months. The index for personal care, which rose 0.6 percent in November, was unchanged in December.

Not seasonally adjusted CPI measures

The Consumer Price Index for All Urban Consumers (CPI-U) increased 3.0 percent over the last 12 months to an index level of 225.672 (1982-84=100). For the month, the index declined 0.2 percent prior to seasonal adjustment.

The Consumer Price Index for Urban Wage Earners and Clerical Workers (CPI-W) increased 3.2 percent over the last 12 months to an index level of 222.166 (1982-84=100). For the month, the index declined 0.3 percent prior to seasonal adjustment.

The Chained Consumer Price Index for All Urban Consumers (C-CPI-U) increased 2.8 percent over the last 12 months. For the month, the index declined 0.3 percent on a not seasonally adjusted basis. Please note that the indexes for the post-2009 period are subject to revision.

The Consumer Price Index for January 2012 is scheduled to be released on Friday, February 17, 2012, at 8:30 a.m. (EST).

Redesigning the Consumer Price Index (CPI) Press Release Tables

The format of the tables contained in the CPI News Release will change beginning with the CPI News Release for March, 2012, which will be issued on Friday, April 13, 2012. News Release tables are currently available as part of the News Release pdf and html files, and independently in html format. The new tables will also be available in Excel format. In addition, the BLS will begin issuing monthly companion Excel files, which will contain additional index level and CPI-W information.

These tables were made available for public comment during October 2011. In response to the public comments, the BLS will issue Excel files each month, as companions to the News Release. There will be CPI-U and CPI-W files, and in addition to the data contained in the News Release tables, the Excel files will contain index values. Samples of the companion Excel files will be available with the February CPI News Release in March 2012. Samples of the new CPI press release tables are available now at <http://www.bls.gov/cpi/mock-ups.htm>.

In August 2009, the Bureau of Labor Statistics (BLS) restructured the text of the CPI press release to focus on the price movements of three broad expenditure categories, namely Food, Energy, and All items less food and energy. Table A within the CPI press release text was also updated in August 2009 to reflect this new structure. Before August 2009, the text of the CPI press release had focused on eight CPI 'major groups' (Food and beverages; Housing; Apparel; Transportation; Medical care; Recreation; Education and communication; and Other goods and services).

While the text of the CPI press release was restructured in 2009, seven additional CPI press release tables continued to be published using the eight major groups. BLS has redesigned these press release tables, to reflect the focus on Food, Energy, and All items less food and energy. Within these three broad categories, CPI item series will be further divided into commodities and services. The CPI News Release will contain these updated tables beginning with the March 2012 News Release, to be issued on Friday, April 13, 2012.

Beyond the redesign in the structure of the CPI press release tables, several other improvements to these tables have been made.

The new Table 1 gives a summary of the index series which typically contribute to changes in the Consumer Price Index for All Urban Consumers (CPI-U).

The new Table 2 will show the full publication stub using the new structure for the CPI-U, including 11 new items series that were created to augment the redesign in the publication structure. Table 3 will show aggregate item series (e.g., Transportation) that do not fall under the Food, Energy, and All items less food and energy structure.

Table 4 will show the All items indexes at the local, regional, and city-size class levels.

Table 5 will show the Chained Consumer Price Index for All Urban Consumers (C-CPI-U), and presents a history of annual percentage changes in the C-CPI-U compared to the CPI-U.

Table 6 will focus on 1-month seasonally adjusted changes in the CPI-U, while table 7 will focus on 12-month not seasonally adjusted changes. Tables 6 and 7 will present three additional pieces of data to help users better interpret index changes. First, these tables will show the 'effect' each item has on the price change for All items. For example, if the effect of food is 0.4, and the index for All items increased

1.2 percent, it can be said that increases in food prices accounted for 0.4 / 1.2, or 33.3 percent, of the increase in overall prices for that period. Said another way, had food prices been unchanged, the All items index only would have increased 0.8 percent (or 1.2 percent for All items, minus the 0.4 effect for Food). Effects can be negative as well. For example, if the effect of food was a negative 0.1, and the All items index rose 0.5 percent, the All items index actually would have been 0.1 percent higher (or 0.6 percent) had food prices been unchanged.

Second, standard errors for percent changes will be shown on tables 6 and 7. Confidence intervals for statistics can be created using standard errors; e.g., roughly 95% confidence intervals can be constructed using two standard errors. For example, if an item increased 3.7 percent, and its standard error was 0.6 percent, the 95% confidence interval for that price change can be said to be 3.7 percent plus or minus two standard errors, or 3.7 percent plus or minus 1.2 percent.

Finally, each item series in tables 6 and 7 will show the last time that item had a price change as large (or as small) as the percent change published that period. For example, if bananas rose 3.7 percent, and that was its largest increase since November 2007, that would be noted in the new tables.

In addition, most of the existing tables show the ‘relative importance’, or weight, of each item category as of the previous December. The relative importance columns in the new tables will be improved in that they will be updated monthly to reflect the change in relative prices over time.

Finally, there will no longer be any press release tables that focus on the Consumer Price Index for Urban Wage Earners and Clerical Workers (CPI-W). That said, the CPI-W All items index level and percent changes will still be noted in the text of the press release, and a companion Excel file with CPI-W information will be available.

Expenditure Weight Update

Effective with the release of the January 2012 CPI on February 17, 2012, the Bureau of Labor Statistics (BLS) will update the consumption expenditure weights in the Consumer Price Index for All Urban Consumers (CPI-U) and Consumer Price Index for Urban Wage Earners and Clerical Workers (CPI-W) to the 2009-10 period. The updated expenditure weights for these indexes will replace the 2007-2008 weights that were introduced effective with the January 2010 CPI release. As originally announced by BLS in December 1998, CPI expenditure weights will continue to be updated at two-year intervals.

Facilities for Sensory Impaired

Information from this release will be made available to sensory impaired individuals upon request. Voice phone: 202-691-5200, Federal Relay Services: 1-800-877-8339.

Brief Explanation of the CPI

The Consumer Price Index (CPI) is a measure of the average change in prices over time of goods and services purchased by households. The Bureau of Labor Statistics publishes CPIs for two population groups: (1) the CPI for Urban Wage Earners and Clerical Workers (CPI-W), which covers households

of wage earners and clerical workers that comprise approximately 32 percent of the total population and (2) the CPI for All Urban Consumers (CPI-U) and the Chained CPI for All Urban Consumers (C-CPI-U), which cover approximately 87 percent of the total population and include in addition to wage earners and clerical worker households, groups such as professional, managerial, and technical workers, the self-employed, short-term workers, the unemployed, and retirees and others not in the labor force.

The CPIs are based on prices of food, clothing, shelter, and fuels, transportation fares, charges for doctors' and dentists' services, drugs, and other goods and services that people buy for day-to-day living. Prices are collected each month in 87 urban areas across the country from about 4,000 housing units and approximately 26,000 retail establishments—department stores, supermarkets, hospitals, filling stations, and other types of stores and service establishments. All taxes directly associated with the purchase and use of items are included in the index. Prices of fuels and a few other items are obtained every month in all 87 locations. Prices of most other commodities and services are collected every month in the three largest geographic areas and every other month in other areas. Prices of most goods and services are obtained by personal visits or telephone calls of the Bureau's trained representatives.

In calculating the index, price changes for the various items in each location are averaged together with weights, which represent their importance in the spending of the appropriate population group. Local data are then combined to obtain a U.S. city average. For the CPI-U and CPI-W separate indexes are also published by size of city, by region of the country, for cross-classifications of regions and population-size classes, and for 27 local areas. Area indexes do not measure differences in the level of prices among cities; they only measure the average change in prices for each area since the base period. For the C-CPI-U data are issued only at the national level. It is important to note that the CPI-U and CPI-W are considered final when released, but the C-CPI-U is issued in preliminary form and subject to two annual revisions.

The index measures price change from a designed reference date. For the CPI-U and the CPI-W the reference base is 1982-84 equals 100. The reference base for the C-CPI-U is December 1999 equals 100. An increase of 16.5 percent from the reference base, for example, is shown as 116.500. This change can also be expressed in dollars as follows: the price of a base period market basket of goods and services in the CPI has risen from \$10 in 1982-84 to \$11.65.

For further details visit the CPI home page on the Internet at <http://www.bls.gov/cpi/> or contact our CPI Information and Analysis Section on (202) 691-7000.

Note on Sampling Error in the Consumer Price Index

The CPI is a statistical estimate that is subject to sampling error because it is based upon a sample of retail prices and not the complete universe of all prices. BLS calculates and publishes estimates of the 1-month, 2-month, 6-month and 12-month percent change standard errors annually, for the CPI-U. These standard error estimates can be used to construct confidence intervals for hypothesis testing. For example, the estimated standard error of the 1 month percent change is 0.03 percent for the U.S. All Items Consumer Price Index. This means that if we repeatedly sample from the universe of all retail prices using the same methodology, and estimate a percentage change for each sample, then 95% of these estimates would be within 0.06 percent of the 1 month percentage change based on all retail prices. For example, for a 1-month change of 0.2 percent in the All Items CPI for All Urban Consumers, we are

95 percent confident that the actual percent change based on all retail prices would fall between 0.14 and 0.26 percent. For the latest data, including information on how to use the estimates of standard error, see “Variance Estimates for Price Changes in the Consumer Price Index, January-December 2010”. These data are available on the CPI home page (<http://www.bls.gov/cpi>), or by using the following link <http://www.bls.gov/cpi/cpivar2010.pdf>

Calculating Index Changes

Movements of the indexes from one month to another are usually expressed as percent changes rather than changes in index points, because index point changes are affected by the level of the index in relation to its base period while percent changes are not. The example below illustrates the computation of index point and percent changes.

Percent changes for 3-month and 6-month periods are expressed as annual rates and are computed according to the standard formula for compound growth rates. These data indicate what the percent change would be if the current rate were maintained for a 12-month period.

Index Point Change

CPI	202.416
Less previous index	201.800
Equals index point change	.616

Percent Change

Index point difference	.616
Divided by the previous index	201.800
Equals	0.003
Results multiplied by one hundred	0.003x100
Equals percent change	0.3

Regions Defined

The states in the four regions shown in Tables 3 and 6 are listed below.

The Northeast--Connecticut, Maine, Massachusetts, New Hampshire, New York, New Jersey, Pennsylvania, Rhode Island, and Vermont.

The Midwest--Illinois, Indiana, Iowa, Kansas, Michigan, Minnesota, Missouri, Nebraska, North Dakota, Ohio, South Dakota, and Wisconsin.

The South--Alabama, Arkansas, Delaware, Florida, Georgia, Kentucky, Louisiana, Maryland, Mississippi, North Carolina, Oklahoma, South Carolina, Tennessee, Texas, Virginia, West Virginia, and the District of Columbia.

The West--Alaska, Arizona, California, Colorado, Hawaii, Idaho, Montana, Nevada, New Mexico, Oregon, Utah, Washington, and Wyoming.

A Note on Seasonally Adjusted and Unadjusted Data

Because price data are used for different purposes by different groups, the Bureau of Labor Statistics publishes seasonally adjusted as well as unadjusted changes each month.

For analyzing general price trends in the economy, seasonally adjusted changes are usually preferred since they eliminate the effect of changes that normally occur at the same time and in about the same magnitude every year--such as price movements resulting from changing climatic conditions, production cycles, model changeovers, holidays, and sales.

The unadjusted data are of primary interest to consumers concerned about the prices they actually pay. Unadjusted data also are used extensively for escalation purposes. Many collective bargaining contract agreements and pension plans, for example, tie compensation changes to the Consumer Price Index before adjustment for seasonal variation.

Seasonal factors used in computing the seasonally adjusted indexes are derived by the X-12-ARIMA Seasonal Adjustment Method. Seasonally adjusted indexes and seasonal factors are computed annually. Each year, the last 5 years of seasonally adjusted data are revised. Data from January 2006 through December 2010 were replaced in January 2011. Exceptions to the usual revision schedule were: the updated seasonal data at the end of 1977 replaced data from 1967 through 1977; and, in January 2002, dependently seasonally adjusted series were revised for January 1987-December 2001 as a result of a change in the aggregation weights for dependently adjusted series. For further information, please see "Aggregation of Dependently Adjusted Seasonally Adjusted Series," in the October 2001 issue of the CPI Detailed Report.

Effective with the publication of data from January 2006 through December 2010 in January 2011, the Video and audio series and the Information technology, hardware and services series were changed from independently adjusted to dependently adjusted. This resulted in an increase in the number of seasonal components used in deriving seasonal movement of the All items and 54 other lower level aggregations, from 73 for the publication of January 1998 through December 2005 data to 82 for the publication of seasonally adjusted data for January 2006 and later. Each year the seasonal status of every series is reevaluated based upon certain statistical criteria. If any of the 82 components change their seasonal adjustment status from seasonally adjusted to not seasonally adjusted, not seasonally adjusted data will be used in the aggregation of the dependent series for the last 5 years, but the seasonally adjusted indexes before that period will not be changed. Note: 37 of the 82 components are not seasonally adjusted for 2011.

Seasonally adjusted data, including the all items index levels, are subject to revision for up to five years after their original release. For this reason, BLS advises against the use of these data in escalation agreements.

Effective with the calculation of the seasonal factors for 1990, the Bureau of Labor Statistics has used an enhanced seasonal adjustment procedure called Intervention Analysis Seasonal Adjustment for some CPI series. Intervention Analysis Seasonal Adjustment allows for better estimates of seasonally adjusted data. Extreme values and/or sharp movements which might distort the seasonal pattern are estimated and removed from the data prior to calculation of seasonal factors. Beginning with the calculation of seasonal factors for 1996, X-12-ARIMA software was used for Intervention Analysis Seasonal Adjustment.

For the seasonal factors introduced in January 2011, BLS adjusted 29 series using Intervention Analysis Seasonal Adjustment, including selected food and beverage items, motor fuels, electricity and vehicles. For example, this procedure was used for the Motor fuel series to offset the effects of events such as damage to oil refineries from Hurricane Katrina.

For a complete list of Intervention Analysis Seasonal Adjustment series and explanations, please refer to the article “Intervention Analysis Seasonal Adjustment”, located on our website at <http://www.bls.gov/cpi/cpisapage.htm>.

For additional information on seasonal adjustment in the CPI, please write to the Bureau of Labor Statistics, Division of Consumer Prices and Price Indexes, Washington, DC 20212 or contact David Levin at (202) 691-6968, or by e-mail at Levin.David@bls.gov. If you have general questions about the CPI, please call our information staff at (202) 691-7000.

Recalculated Seasonally Adjusted Indexes to be Available on February 15, 2012

Each year with the release of the January CPI, seasonal adjustment factors are recalculated to reflect price movements from the just-completed calendar year. This routine annual recalculation may result in revisions to seasonally adjusted indexes for the previous 5 years. BLS will make available recalculated seasonally adjusted indexes, as well as recalculated seasonal adjustment factors, for the period January 2007 through December 2011, on Wednesday, February 15, 2012. This date is two working days before the scheduled release of the January 2012 CPI on Friday, February 17, 2012.

The revised indexes and seasonal factors will be available on the internet. The address is <http://www.bls.gov/cpi/cpisapage.htm>. Look under Seasonal Adjustment in the CPI and select Revised Seasonally Adjusted Indexes and Factors, 2007-2011.

For further information please contact David Levin by electronic mail at: Levin.David@bls.gov or by telephone at: (202) 691-5261.

Table 1. Consumer Price Index for All Urban Consumers (CPI-U): U.S. city average, by expenditure category and commodity and service group

(1982-84=100, unless otherwise noted)

CPI-U Expenditure category	Relative importance, December 2010	Unadjusted indexes		Unadjusted percent change to Dec. 2011 from—		Seasonally adjusted percent change from—		
		Nov. 2011	Dec. 2011	Dec. 2010	Nov. 2011	Sep. to Oct.	Oct. to Nov.	Nov. to Dec.
All items	100.000	226.230	225.672	3.0	-0.2	-0.1	0.0	0.0
All items (1967=100)	-	677.684	676.014	-	-	-	-	-
Food and beverages	14.792	230.656	231.130	4.5	.2	.1	.1	.2
Food	13.742	230.790	231.301	4.7	.2	.1	.1	.2
Food at home	7.816	229.380	229.982	6.0	.3	.1	-.1	.3
Cereals and bakery products	1.090	265.552	265.997	6.1	.2	.4	.3	.3
Meats, poultry, fish, and eggs	1.813	227.583	228.853	7.9	.6	.5	-.1	.7
Dairy and related products ¹839	218.767	218.458	8.1	-.1	.1	-.3	-.1
Fruits and vegetables	1.152	282.605	283.550	2.3	.3	-1.7	-.6	-.5
Nonalcoholic beverages and beverage materials926	168.606	168.520	5.8	-.1	.5	.2	.3
Other food at home	1.996	199.924	200.566	5.5	.3	.4	-.1	.4
Sugar and sweets ¹297	210.039	210.846	3.8	.4	.1	-1.7	.4
Fats and oils232	224.907	227.601	13.5	1.2	.3	.8	1.7
Other foods	1.466	211.649	211.986	4.5	.2	.4	.1	.2
Other miscellaneous foods ^{1 2}432	125.702	126.293	3.2	.5	.3	.2	.5
Food away from home ¹	5.926	234.046	234.435	2.9	.2	.2	.3	.2
Other food away from home ^{1 2}329	164.120	164.095	2.1	.0	.4	.1	.0
Alcoholic beverages	1.051	227.363	227.335	1.4	.0	.0	.0	.1
Housing	41.460	219.969	220.193	1.9	.1	.1	.1	.1
Shelter	31.955	253.312	253.716	1.9	.2	.2	.2	.2
Rent of primary residence ³	5.925	256.367	257.189	2.5	.3	.4	.2	.3
Lodging away from home ²776	130.687	128.131	2.0	-2.0	-1.7	-.1	-.2
Owners' equivalent rent of residences ^{3 4}	24.905	261.503	261.982	1.8	.2	.2	.1	.2
Owners' equivalent rent of primary residence ^{3 4}	23.310	261.479	261.960	1.8	.2	.2	.1	.2
Tenants' and household insurance ^{1 2}349	128.777	129.480	2.6	.5	.4	.3	.5
Fuels and utilities	5.096	218.199	217.674	2.4	-.2	-.2	-.3	-.2
Household energy	4.000	190.444	189.711	1.8	-.4	-.3	-.4	-.4
Fuel oil and other fuels ¹309	342.823	340.512	14.3	-.7	.1	2.3	-.7
Energy services ³	3.691	190.572	189.891	.8	-.4	-.4	-.7	-.3
Water and sewer and trash collection services ²	1.095	182.254	182.758	4.7	.3	.2	.2	.5
Household furnishings and operations	4.409	125.073	125.170	1.0	.1	.1	.0	.1
Household operations ^{1 2}772	152.578	152.729	1.4	.1	.3	.1	.1
Apparel	3.601	127.285	123.470	4.6	-3.0	.4	.6	-.1
Men's and boys' apparel882	119.930	115.997	5.7	-3.3	.6	1.2	-.8
Women's and girls' apparel	1.520	115.603	110.918	4.9	-4.1	.6	.9	-.4
Infants' and toddlers' apparel192	118.775	118.032	4.9	-.6	-.8	1.2	2.1
Footwear700	130.293	128.208	1.3	-1.6	-1.0	-.3	.4
Transportation	17.308	211.358	208.585	5.2	-1.3	-1.1	-.8	-.7
Private transportation	16.082	206.635	203.809	5.3	-1.4	-1.2	-.9	-.8
New and used motor vehicles ²	6.333	100.021	99.795	2.8	-.2	-.4	-.3	-.4
New vehicles	3.513	142.736	142.953	3.2	.2	-.3	-.3	-.2
Used cars and trucks	2.055	149.230	148.140	4.0	-.7	-.6	-.1	-.9
Motor fuel	5.079	294.049	282.501	10.3	-3.9	-3.1	-2.4	-2.0
Gasoline (all types)	4.865	292.486	280.713	9.9	-4.0	-3.1	-2.4	-2.0
Motor vehicle parts and equipment ¹408	146.338	147.499	5.9	.8	-.2	.7	.8
Motor vehicle maintenance and repair ¹	1.172	255.663	255.644	2.2	.0	.2	.0	.0
Public transportation	1.227	268.478	266.958	3.8	-.6	.0	.1	.0
Medical care	6.627	404.858	405.629	3.5	.2	.5	.4	.4
Medical care commodities ¹	1.633	326.624	327.254	3.2	.2	.3	.2	.2
Medical care services	4.994	429.191	430.005	3.6	.2	.5	.5	.4
Professional services	2.830	337.347	337.907	2.2	.2	.3	.2	.3

See footnotes at end of table.

Table 1. Consumer Price Index for All Urban Consumers (CPI-U): U.S. city average, by expenditure category and commodity and service group-Continued

(1982-84=100, unless otherwise noted)

CPI-U	Relative importance, December 2010	Unadjusted indexes		Unadjusted percent change to Dec. 2011 from—		Seasonally adjusted percent change from—		
		Nov. 2011	Dec. 2011	Dec. 2010	Nov. 2011	Sep. to Oct.	Oct. to Nov.	Nov. to Dec.
Expenditure category								
Hospital and related services	1.703	654.117	653.839	5.3	0.0	0.6	0.7	0.5
Recreation ²	6.293	113.232	113.499	1.0	.2	-.1	.1	.4
Video and audio ²	1.816	98.315	98.225	1.1	-.1	.3	-.1	.3
Education and communication ²	6.421	132.750	132.728	1.7	.0	.2	.2	.1
Education ²	3.107	212.751	212.745	4.6	.0	.4	.5	.3
Educational books and supplies204	541.618	540.742	5.2	-.2	.4	.7	-.2
Tuition, other school fees, and childcare	2.903	611.581	611.633	4.6	.0	.4	.5	.3
Communication ²	3.313	83.016	82.990	-1.1	.0	.0	.0	.0
Information and information processing ²	3.138	79.625	79.599	-1.4	.0	.0	.0	.0
Telephone services ^{1 2}	2.334	101.259	101.397	-.3	.1	.2	.0	.1
Information technology, hardware and services ⁵804	8.866	8.818	-4.5	-.5	-.4	-.1	-.6
Personal computers and peripheral equipment ⁶228	65.849	64.348	-12.5	-2.3	-.8	.7	-2.5
Other goods and services	3.497	390.761	391.043	1.7	.1	.1	.5	.1
Tobacco and smoking products ¹906	843.604	847.063	2.3	.4	.0	.1	.4
Personal care	2.591	210.354	210.257	1.5	.0	.1	.6	.0
Personal care products ¹671	161.585	160.825	.1	-.5	.3	.5	-.5
Personal care services ¹638	232.216	232.302	.9	.0	.1	.4	.0
Miscellaneous personal services	1.055	367.157	367.912	3.2	.2	.2	.5	.5
Commodity and service group								
Commodities	40.012	184.791	183.345	4.2	-.8	-.4	-.3	-.3
Food and beverages	14.792	230.656	231.130	4.5	.2	.1	.1	.2
Commodities less food and beverages	25.219	160.091	157.921	4.0	-1.4	-1.8	-.5	-.6
Nondurables less food and beverages	15.474	208.902	204.529	5.5	-2.1	-1.4	-.1	-.7
Apparel	3.601	127.285	123.470	4.6	-3.0	.4	.6	-.1
Nondurables less food, beverages, and apparel	11.873	264.478	259.668	5.8	-1.8	-1.8	-.6	-.9
Durables	9.745	112.405	112.277	1.6	-.1	-.4	-.4	-.1
Services	59.988	267.413	267.737	2.2	.1	.2	.1	.2
Rent of shelter ⁴	31.607	263.931	264.341	1.9	.2	.2	.3	.3
Tenants' and household insurance ^{1 2}349	128.777	129.480	2.6	.5	.4	.3	.5
Energy services ³	3.691	190.572	189.891	.8	-.4	-.4	-.7	-.3
Water and sewer and trash collection services ²	1.095	182.254	182.758	4.7	.3	.2	.2	.5
Household operations ^{1 2}772	152.578	152.729	1.4	.1	.3	.1	.1
Transportation services	6.140	270.117	269.858	2.5	-.1	.1	.1	.1
Medical care services	4.994	429.191	430.005	3.6	.2	.5	.5	.4
Other services	11.340	317.275	318.043	2.3	.2	.2	.3	.5
Special indexes								
All items less food	86.258	225.532	224.805	2.7	-.3	-.1	.0	.0
All items less shelter	68.045	218.205	217.260	3.5	-.4	-.2	-.1	-.1
All items less medical care	93.373	217.479	216.875	2.9	-.3	-.1	.0	.0
Commodities less food	26.270	162.572	160.453	3.9	-1.3	-.7	-.4	-.6
Nondurables less food	16.525	210.101	205.966	5.2	-2.0	-1.3	-.1	-.5
Nondurables less food and apparel	12.923	259.934	255.567	5.4	-1.7	-1.7	-.5	-.8
Nondurables	30.266	220.592	218.411	5.0	-1.0	-.6	.1	-.3
Services less rent of shelter ⁴	28.382	292.242	292.487	2.5	.1	.2	.1	.3
Services less medical care services	54.994	254.978	255.271	2.0	.1	.2	.3	.3
Energy	9.079	238.177	232.300	6.6	-2.5	-2.0	-1.6	-1.3
All items less energy	90.921	226.818	226.795	2.6	.0	.1	.2	.2
All items less food and energy	77.179	226.859	226.740	2.2	-.1	.1	.2	.1
Commodities less food and energy commodities	20.882	146.811	145.929	2.2	-.6	-.1	.1	-.2
Energy commodities	5.388	298.530	287.363	10.6	-3.7	-2.9	-2.1	-1.9
Services less energy services	56.297	275.224	275.643	2.3	.2	.2	.2	.3
Purchasing power of the consumer dollar (1982-84=\$1.00)	-	\$.442	\$.443	-	-	-	-	-
Purchasing power of the consumer dollar (1967=\$1.00)	-	\$.148	\$.148	-	-	-	-	-

¹ Not seasonally adjusted.

² Indexes on a December 1997=100 base.

³ This index series was calculated using a Laspeyres estimator. All other item stratum index series were calculated using a geometric means estimator.

⁴ Indexes on a December 1982=100 base.

⁵ Indexes on a December 1988=100 base.

⁶ Indexes on a December 2007=100 base.

- Data not available.

NOTE: Index applies to a month as a whole, not to any specific date.

Table 2. Consumer Price Index for All Urban Consumers (CPI-U): Seasonally adjusted U.S. city average, by expenditure category and commodity and service group

(1982-84=100, unless otherwise noted)

CPI-U Expenditure category	Seasonally adjusted indexes				Seasonally adjusted annual rate percent change for					
					3 months ended—				6 months ended—	
	Sep. 2011	Oct. 2011	Nov. 2011	Dec. 2011	Mar. 2011	June 2011	Sep. 2011	Dec. 2011	June 2011	Dec. 2011
All items	226.955	226.763	226.720	226.747	6.1	1.5	4.8	-0.4	3.8	2.2
Food and beverages	230.542	230.795	230.917	231.401	7.1	4.0	5.3	1.5	5.5	3.4
Food	230.673	230.948	231.073	231.571	7.5	4.1	5.7	1.6	5.8	3.6
Food at home	229.911	230.077	229.869	230.448	11.2	4.7	7.4	.9	7.9	4.1
Cereals and bakery products	264.757	265.757	266.605	267.352	5.7	7.1	7.8	4.0	6.4	5.9
Meats, poultry, fish, and eggs	226.323	227.379	227.206	228.825	13.5	9.0	5.0	4.5	11.2	4.8
Dairy and related products ¹	219.381	219.493	218.767	218.458	8.4	12.4	14.1	-1.7	10.4	5.9
Fruits and vegetables	289.690	284.749	283.020	281.558	23.3	-10.2	11.0	-10.8	5.3	-5
Nonalcoholic beverages and beverage materials	167.995	168.863	169.220	169.663	10.4	6.3	2.7	4.0	8.3	3.4
Other food at home	200.393	201.118	200.969	201.782	7.1	5.1	7.0	2.8	6.1	4.9
Sugar and sweets ¹	213.330	213.602	210.039	210.846	4.8	4.3	11.4	-4.6	4.6	3.1
Fats and oils	223.600	224.341	226.162	230.040	25.8	9.2	7.9	12.0	17.2	10.0
Other foods	211.873	212.752	212.965	213.360	4.8	4.6	6.0	2.8	4.7	4.4
Other miscellaneous foods ^{1 2}	125.044	125.461	125.702	126.293	.8	3.4	4.4	4.1	2.1	4.2
Food away from home ¹	233.032	233.459	234.046	234.435	2.8	3.2	3.4	2.4	3.0	2.9
Other food away from home ^{1 2}	163.334	163.978	164.120	164.095	3.0	1.5	2.1	1.9	2.3	2.0
Alcoholic beverages	227.285	227.240	227.322	227.617	1.6	3.4	.0	.6	2.5	.3
Housing	220.162	220.446	220.631	220.918	1.9	1.7	2.6	1.4	1.8	2.0
Shelter	252.726	253.214	253.601	254.071	1.3	1.9	2.3	2.1	1.6	2.2
Rent of primary residence ³	254.857	255.853	256.398	257.043	1.7	1.2	3.5	3.5	1.5	3.5
Lodging away from home ²	139.636	137.306	137.157	136.846	-1.0	25.8	-6.1	-7.8	11.6	-6.9
Owners' equivalent rent of residences ^{3 4}	260.548	261.086	261.466	261.932	1.3	1.3	2.4	2.1	1.3	2.3
Owners' equivalent rent of primary residence ^{3 4}	260.522	261.064	261.443	261.910	1.3	1.3	2.4	2.1	1.3	2.3
Tenants' and household insurance ^{1 2}	127.922	128.416	128.777	129.480	-1.0	4.2	2.4	5.0	1.5	3.7
Fuels and utilities	222.606	222.093	221.414	221.013	7.1	.8	4.9	-2.8	3.9	1.0
Household energy	195.624	194.943	194.073	193.353	7.2	-1	5.2	-4.6	3.5	.2
Fuel oil and other fuels ¹	334.735	335.148	342.823	340.512	73.2	-1.3	-6.9	7.1	30.7	-2
Energy services ³	196.677	195.909	194.549	193.883	2.8	.0	6.4	-5.6	1.4	.2
Water and sewer and trash collection services ²	181.374	181.744	182.124	183.054	6.7	4.3	4.1	3.8	5.5	3.9
Household furnishings and operations	125.249	125.369	125.428	125.550	.2	1.4	1.4	1.0	.8	1.2
Household operations ^{1 2}	151.967	152.415	152.578	152.729	-3	3.2	.6	2.0	1.4	1.3
Apparel	123.529	124.021	124.802	124.656	-1.5	11.5	5.0	3.7	4.8	4.3
Men's and boys' apparel	116.635	117.293	118.669	117.681	-2.3	17.1	5.4	3.6	7.0	4.5
Women's and girls' apparel	110.218	110.866	111.907	111.514	-2.3	12.4	5.2	4.8	4.8	5.0
Infants' and toddlers' apparel	116.253	115.333	116.712	119.110	-12.7	6.6	17.9	10.2	-3.5	14.0
Footwear	129.833	128.577	128.246	128.778	1.0	5.0	2.4	-3.2	3.0	-4
Transportation	217.280	214.819	213.076	211.532	23.9	-3.1	13.9	-10.2	9.5	1.2
Private transportation	212.785	210.201	208.351	206.725	24.1	-2.6	14.6	-10.9	9.9	1.0
New and used motor vehicles ²	101.095	100.651	100.359	99.928	4.5	11.6	.4	-4.5	8.0	-2.1
New vehicles	143.509	143.020	142.605	142.288	6.4	10.1	.0	-3.4	8.3	-1.7
Used cars and trucks	152.354	151.440	151.235	149.807	2.5	16.8	4.4	-6.5	9.4	-1.2
Motor fuel	318.141	308.228	300.919	294.963	74.8	-20.2	43.9	-26.1	18.1	3.1
Gasoline (all types)	317.446	307.494	300.146	294.255	71.2	-20.5	45.4	-26.2	16.7	3.6
Motor vehicle parts and equipment ¹	145.646	145.308	146.338	147.499	4.3	11.7	2.9	5.2	7.9	4.0
Motor vehicle maintenance and repair ¹	255.244	255.774	255.663	255.644	1.1	2.8	4.4	.6	1.9	2.5
Public transportation	269.718	269.679	270.023	270.081	21.4	-9.5	5.2	.5	4.8	2.8
Medical care	402.269	404.134	405.817	407.278	2.9	3.2	2.8	5.1	3.1	3.9
Medical care commodities ¹	325.130	325.962	326.624	327.254	7.1	1.8	1.3	2.6	4.4	2.0
Medical care services	426.192	428.457	430.539	432.322	1.6	3.7	3.3	5.9	2.6	4.6
Professional services	336.855	337.940	338.505	339.393	2.3	1.4	2.1	3.0	1.8	2.6

See footnotes at end of table.

Table 2. Consumer Price Index for All Urban Consumers (CPI-U): Seasonally adjusted U.S. city average, by expenditure category and commodity and service group-Continued

(1982-84=100, unless otherwise noted)

CPI-U	Seasonally adjusted indexes				Seasonally adjusted annual rate percent change for					
					3 months ended—			6 months ended—		
	Sep. 2011	Oct. 2011	Nov. 2011	Dec. 2011	Mar. 2011	June 2011	Sep. 2011	Dec. 2011	June 2011	Dec. 2011
Expenditure category										
Hospital and related services	647.688	651.366	655.671	658.660	2.3	7.7	4.2	7.0	4.9	5.6
Recreation ²	113.379	113.299	113.381	113.887	1.8	.8	-.2	1.8	1.3	.8
Video and audio ²	98.421	98.742	98.676	98.934	2.5	-2.2	2.1	2.1	.1	2.1
Education and communication ²	131.772	132.015	132.333	132.494	1.8	1.2	1.4	2.2	1.5	1.8
Education ²	209.477	210.224	211.311	211.924	5.2	3.9	4.6	4.8	4.6	4.7
Educational books and supplies	535.859	537.994	541.856	540.898	6.6	4.1	6.4	3.8	5.4	5.1
Tuition, other school fees, and childcare	601.966	604.094	607.131	609.094	5.1	3.9	4.5	4.8	4.5	4.7
Communication ²	83.064	83.078	83.052	83.016	-1.4	-1.3	-1.6	-.2	-1.3	-.9
Information and information processing ²	79.673	79.688	79.662	79.626	-2.3	-1.4	-1.6	-.2	-1.9	-.9
Telephone services ^{1 2}	101.084	101.257	101.259	101.397	-1.9	-.2	-.5	1.2	-1.0	.4
Information technology, hardware and services ⁵	8.933	8.895	8.882	8.830	-3.5	-4.9	-5.0	-4.5	-4.2	-4.8
Personal computers and peripheral equipment ⁶	66.391	65.874	66.318	64.684	-14.3	-9.3	-16.4	-9.9	-11.8	-13.2
Other goods and services	388.859	389.064	390.879	391.225	.6	.9	2.9	2.5	.7	2.7
Tobacco and smoking products ¹	843.141	842.785	843.604	847.063	1.5	-.9	7.1	1.9	.3	4.4
Personal care	209.012	209.193	210.441	210.389	.2	1.5	1.5	2.7	.9	2.1
Personal care products ¹	160.162	160.705	161.585	160.825	.8	-2.0	.0	1.7	-.6	.8
Personal care services ¹	230.974	231.238	232.216	232.302	-.2	1.0	.6	2.3	.4	1.5
Miscellaneous personal services	364.789	365.594	367.300	369.186	1.7	2.8	3.4	4.9	2.3	4.1
Commodity and service group										
Commodities	186.622	185.783	185.276	184.737	12.6	.9	8.1	-4.0	6.6	1.9
Food and beverages	230.542	230.795	230.917	231.401	7.1	4.0	5.3	1.5	5.5	3.4
Commodities less food and beverages	162.643	161.394	160.650	159.718	15.9	-.8	9.7	-7.0	7.2	1.0
Nondurables less food and beverages	212.876	209.810	209.529	208.056	23.3	-2.5	13.0	-8.8	9.6	1.6
Apparel	123.529	124.021	124.802	124.656	-1.5	11.5	5.0	3.7	4.8	4.3
Nondurables less food, beverages, and apparel	273.642	268.818	267.123	264.843	32.0	-7.2	16.6	-12.3	10.7	1.1
Durables	113.488	113.001	112.495	112.398	3.1	7.6	-.3	-3.8	5.4	-2.0
Services	267.015	267.482	267.869	268.465	2.1	1.8	2.6	2.2	1.9	2.4
Rent of shelter ⁴	263.256	263.905	264.781	265.563	-.3	1.6	2.9	3.6	.6	3.2
Tenants' and household insurance ^{1 2}	127.922	128.416	128.777	129.480	-1.0	4.2	2.4	5.0	1.5	3.7
Energy services ³	196.677	195.909	194.549	193.883	2.8	.0	6.4	-5.6	1.4	-.2
Water and sewer and trash collection services ²	181.374	181.744	182.124	183.054	6.7	4.3	4.1	3.8	5.5	3.9
Household operations ^{1 2}	151.967	152.415	152.578	152.729	-.3	3.2	.6	2.0	1.4	1.3
Transportation services	269.113	269.469	269.605	269.976	6.4	.3	2.1	1.3	3.3	1.7
Medical care services	426.192	428.457	430.539	432.322	1.6	3.7	3.3	5.9	2.6	4.6
Other services	315.430	315.958	316.890	318.326	2.0	1.7	1.9	3.7	1.8	2.8
Special indexes										
All items less food	226.389	226.124	226.054	226.007	5.9	1.1	4.7	-.7	3.5	2.0
All items less shelter	219.458	218.994	218.781	218.633	8.5	1.3	6.0	-1.5	4.8	2.2
All items less medical care	218.324	218.055	217.947	217.919	6.4	1.3	5.0	-.7	3.8	2.1
Commodities less food	165.062	163.841	163.117	162.214	15.3	-.7	9.3	-6.7	7.0	1.0
Nondurables less food	213.675	210.929	210.810	209.658	21.0	-2.3	12.0	-7.3	8.7	1.9
Nondurables less food and apparel	268.178	263.695	262.297	260.257	29.3	-6.2	14.9	-11.3	10.1	.9
Nondurables	222.435	221.009	221.167	220.517	15.4	.2	8.8	-3.4	7.5	2.5
Services less rent of shelter ⁴	291.867	292.461	292.863	293.829	2.9	1.7	2.5	2.7	2.3	2.6
Services less medical care services	254.668	255.055	255.717	256.482	1.0	1.5	2.7	2.9	1.3	2.8
Energy	252.319	247.248	243.319	240.111	42.4	-12.5	26.6	-18.0	11.6	1.9
All items less energy	226.190	226.491	226.841	227.196	2.8	3.1	2.7	1.8	3.0	2.2
All items less food and energy	226.137	226.444	226.836	227.166	2.0	2.9	2.1	1.8	2.5	2.0
Commodities less food and energy commodities	146.533	146.428	146.573	146.337	1.9	5.9	1.5	-.5	3.9	.5
Energy commodities	321.179	311.714	305.104	299.289	74.7	-19.2	40.5	-24.6	18.8	2.9
Services less energy services	274.216	274.800	275.351	276.067	2.1	1.9	2.3	2.7	2.0	2.5

¹ Not seasonally adjusted.

² Indexes on a December 1997=100 base.

³ This index series was calculated using a Laspeyres estimator. All other item stratum index series were calculated using a geometric means estimator.

⁴ Indexes on a December 1982=100 base.

⁵ Indexes on a December 1988=100 base.

⁶ Indexes on a December 2007=100 base.

NOTE: Index applies to a month as a whole, not to any specific date.

Table 3. Consumer Price Index for All Urban Consumers (CPI-U): Selected areas, all items index

(1982-84=100, unless otherwise noted)

CPI-U	Pricing schedule 1	All items									
		Indexes				Percent change to Dec.2011 from—			Percent change to Nov.2011 from—		
		Sep. 2011	Oct. 2011	Nov. 2011	Dec. 2011	Dec. 2010	Oct. 2011	Nov. 2011	Nov. 2010	Sep. 2011	Oct. 2011
U.S. city average	M	226.889	226.421	226.230	225.672	3.0	-0.3	-0.2	3.4	-0.3	-0.1
Region and area size²											
Northeast urban	M	243.323	243.014	242.652	241.987	2.9	-4	-3	3.2	-3	-1
Size A - More than 1,500,000	M	244.983	244.534	244.076	243.328	2.7	-5	-3	3.1	-4	-2
Size B/C - 50,000 to 1,500,000 ³	M	145.369	145.404	145.335	145.062	3.4	-2	-2	3.6	.0	.0
Midwest urban	M	216.968	215.653	215.614	215.173	2.8	-2	-2	3.3	-6	.0
Size A - More than 1,500,000	M	217.360	216.130	216.097	215.633	2.7	-2	-2	3.2	-6	.0
Size B/C - 50,000 to 1,500,000 ³	M	139.542	138.573	138.453	138.186	2.9	-3	-2	3.3	-8	-1
Size D - Nonmetropolitan (less than 50,000)	M	213.606	212.476	212.907	212.505	3.1	.0	-2	3.3	-3	.2
South urban	M	220.371	219.969	219.961	219.469	3.3	-2	-2	3.8	-2	.0
Size A - More than 1,500,000	M	221.242	220.515	220.654	220.152	2.9	-2	-2	3.4	-3	.1
Size B/C - 50,000 to 1,500,000 ³	M	140.471	140.303	140.218	139.838	3.4	-3	-3	3.9	-2	-1
Size D - Nonmetropolitan (less than 50,000)	M	224.462	224.574	224.714	224.892	4.0	.1	.1	4.2	.1	.1
West urban	M	229.147	229.195	228.771	228.117	2.7	-5	-3	3.2	-2	-2
Size A - More than 1,500,000	M	233.221	233.259	232.851	232.106	2.7	-5	-3	3.1	-2	-2
Size B/C - 50,000 to 1,500,000 ³	M	138.564	138.696	138.411	138.017	2.7	-5	-3	3.3	-1	-2
Size classes											
A ⁴	M	206.883	206.393	206.201	205.636	2.8	-4	-3	3.2	-3	-1
B/C ³	M	140.584	140.355	140.225	139.881	3.2	-3	-2	3.6	-3	-1
D	M	220.391	219.959	220.020	219.950	3.5	.0	.0	3.7	-2	.0
Selected local areas⁵											
Chicago-Gary-Kenosha, IL-IN-WI	M	220.027	219.592	219.181	218.180	2.1	-6	-5	2.9	-4	-2
Los Angeles-Riverside-Orange County, CA ...	M	233.022	233.049	232.731	231.567	2.2	-6	-5	3.0	-1	-1
New York-Northern N.J.-Long Island, NY-NJ-CT-PA	M	250.559	250.051	249.317	248.307	2.7	-7	-4	3.0	-5	-3
Boston-Brockton-Nashua, MA-NH-ME-CT	1	245.310	-	245.030	-	-	-	-	2.9	-1	-
Cleveland-Akron, OH	1	213.004	-	211.225	-	-	-	-	2.5	-8	-
Dallas-Fort Worth, TX	1	209.255	-	209.283	-	-	-	-	4.0	.0	-
Washington-Baltimore, DC-MD-VA-WV ⁶	1	147.658	-	147.565	-	-	-	-	3.3	-1	-
Atlanta, GA	2	-	209.182	-	208.590	3.0	-3	-	-	-	-
Detroit-Ann Arbor-Flint, MI	2	-	212.927	-	213.505	3.5	.3	-	-	-	-
Houston-Galveston-Brazoria, TX	2	-	201.398	-	200.477	3.1	-5	-	-	-	-
Miami-Fort Lauderdale, FL	2	-	232.141	-	231.794	3.1	-1	-	-	-	-
Philadelphia-Wilmington-Atlantic City, PA-NJ-DE-MD	2	-	235.440	-	234.312	2.8	-5	-	-	-	-
San Francisco-Oakland-San Jose, CA	2	-	235.331	-	234.327	2.9	-4	-	-	-	-
Seattle-Tacoma-Bremerton, WA	2	-	235.916	-	234.812	3.5	-5	-	-	-	-

¹ Foods, fuels, and several other items priced every month in all areas; most other goods and services priced as indicated:

M - Every month.

1 - January, March, May, July, September, and November.

2 - February, April, June, August, October, and December.

² Regions defined as the four Census regions. See technical notes.

³ Indexes on a December 1996=100 base.

⁴ Indexes on a December 1986=100 base.

⁵ In addition, the following metropolitan areas are published semiannually and appear in Tables 34 and 39 of the January and July issues of the CPI Detailed Report: Anchorage, AK; Cincinnati-Hamilton, OH-KY-IN; Denver-Boulder-Greeley, CO; Honolulu, HI; Kansas City, MO-KS; Milwaukee-Racine, WI; Minneapolis-St. Paul, MN-WI; Phoenix-Mesa, AZ; Pittsburgh, PA; Portland-Salem, OR-WA; St. Louis, MO-IL; San Diego, CA;

Tampa-St. Petersburg-Clearwater, FL.

⁶ Indexes on a November 1996=100 base.

- Data not available.

NOTE: Local area indexes are byproducts of the national CPI program. Each local index has a smaller sample size than the national index and is, therefore, subject to substantially more sampling and other measurement error. As a result, local area indexes show greater volatility than the national index, although their long-term trends are similar. Therefore, the Bureau of Labor Statistics strongly urges users to consider adopting the national average CPI for use in their escalator clauses.

NOTE: Index applies to a month as a whole, not to any specific date.

Table 4. Consumer Price Index for Urban Wage Earners and Clerical Workers (CPI-W): U.S. city average, by expenditure category and commodity and service group

(1982-84=100, unless otherwise noted)

CPI-W Expenditure category	Relative importance, December 2010	Unadjusted indexes		Unadjusted percent change to Dec. 2011 from—		Seasonally adjusted percent change from—		
		Nov. 2011	Dec. 2011	Dec. 2010	Nov. 2011	Sep. to Oct.	Oct. to Nov.	Nov. to Dec.
All items	100.000	222.813	222.166	3.2	-0.3	-0.1	-0.1	0.0
All items (1967=100)	-	663.692	661.766	-	-	-	-	-
Food and beverages	16.401	230.186	230.642	4.6	.2	.1	.1	.2
Food	15.315	230.143	230.624	4.8	.2	.1	.1	.2
Food at home	8.906	228.405	228.925	6.1	.2	.1	-.1	.2
Cereals and bakery products	1.236	266.639	266.752	6.1	.0	.4	.4	.2
Meats, poultry, fish, and eggs	2.227	227.643	228.845	8.0	.5	.5	-.1	.7
Dairy and related products ¹917	217.557	217.503	8.2	.0	.0	-.4	.0
Fruits and vegetables	1.219	279.989	280.711	2.5	.3	-1.5	-.7	-.5
Nonalcoholic beverages and beverage materials	1.091	167.739	167.577	5.6	-.1	.5	.2	.2
Other food at home	2.217	199.146	199.694	5.6	.3	.3	.0	.3
Sugar and sweets ¹324	209.091	209.639	3.7	.3	.3	-1.5	.3
Fats and oils258	226.119	229.065	14.0	1.3	.4	.8	1.7
Other foods	1.635	211.618	211.835	4.6	.1	.3	.1	.1
Other miscellaneous foods ^{1 2}463	125.761	126.235	3.2	.4	.4	.1	.4
Food away from home ¹	6.409	234.240	234.666	3.0	.2	.2	.3	.2
Other food away from home ^{1 2}326	165.228	165.205	2.2	.0	.4	.1	.0
Alcoholic beverages	1.086	229.379	229.467	1.7	.0	.0	.1	.1
Housing	39.228	216.723	217.009	1.9	.1	.1	.1	.1
Shelter	29.811	247.313	247.858	1.9	.2	.2	.2	.2
Rent of primary residence ³	8.396	254.446	255.322	2.4	.3	.3	.2	.3
Lodging away from home ²436	131.860	129.754	1.9	-1.6	-1.6	.2	.0
Owners' equivalent rent of residences ^{3 4}	20.672	236.869	237.350	1.7	.2	.2	.2	.2
Owners' equivalent rent of primary residence ^{3 4}	19.942	236.859	237.342	1.7	.2	.2	.2	.2
Tenants' and household insurance ^{1 2}306	129.912	130.695	2.4	.6	.4	.3	.6
Fuels and utilities	5.633	216.546	216.074	2.5	-.2	-.3	-.3	-.2
Household energy	4.476	188.244	187.586	1.9	-.3	-.4	-.4	-.3
Fuel oil and other fuels ¹301	342.717	340.375	13.6	-.7	-.2	2.3	-.7
Energy services ³	4.175	189.671	189.060	1.1	-.3	-.5	-.6	-.3
Water and sewer and trash collection services ²	1.157	182.664	183.178	4.7	.3	.2	.2	.5
Household furnishings and operations	3.784	121.459	121.409	1.2	.0	.1	.0	.1
Household operations ^{1 2}364	155.567	155.744	1.7	.1	.3	.2	.1
Apparel	3.668	126.764	123.203	5.2	-2.8	.2	.6	.1
Men's and boys' apparel921	120.739	116.906	6.4	-3.2	1.2	.9	-.8
Women's and girls' apparel	1.502	115.324	110.883	5.6	-3.9	.1	.8	.0
Infants' and toddlers' apparel280	122.228	121.842	5.2	-.3	-.6	1.2	2.2
Footwear750	130.676	128.560	2.3	-1.6	-1.1	.2	.3
Transportation	19.418	212.119	209.013	5.7	-1.5	-1.2	-.9	-.8
Private transportation	18.631	208.743	205.607	5.7	-1.5	-1.3	-1.0	-.8
New and used motor vehicles ²	6.914	99.539	99.250	3.2	-.3	-.4	-.3	-.5
New vehicles	3.320	143.778	143.994	3.2	.2	-.3	-.3	-.2
Used cars and trucks	3.003	150.310	149.207	4.1	-.7	-.6	-.1	-.9
Motor fuel	6.470	295.069	283.528	10.3	-3.9	-3.1	-2.4	-1.9
Gasoline (all types)	6.193	293.628	281.852	9.9	-4.0	-3.2	-2.7	-1.6
Motor vehicle parts and equipment ¹479	146.151	147.223	5.8	.7	-.2	.6	.7
Motor vehicle maintenance and repair ¹	1.184	258.342	258.355	2.2	.0	.2	.0	.0
Public transportation787	265.815	264.424	4.0	-.5	.0	.1	.2
Medical care	5.355	407.128	407.909	3.6	.2	.5	.5	.4
Medical care commodities ¹	1.318	318.671	319.396	3.4	.2	.3	.2	.2
Medical care services	4.038	433.269	434.051	3.7	.2	.6	.5	.4
Professional services	2.220	341.148	341.593	2.3	.1	.4	.2	.2

See footnotes at end of table.

Table 4. Consumer Price Index for Urban Wage Earners and Clerical Workers (CPI-W): U.S. city average, by expenditure category and commodity and service group-Continued

(1982-84=100, unless otherwise noted)

CPI-W	Relative importance, December 2010	Unadjusted indexes		Unadjusted percent change to Dec. 2011 from—		Seasonally adjusted percent change from—		
		Nov. 2011	Dec. 2011	Dec. 2010	Nov. 2011	Sep. to Oct.	Oct. to Nov.	Nov. to Dec.
Expenditure category								
Hospital and related services	1.414	657.707	657.440	5.4	0.0	0.6	0.8	0.5
Recreation ²	5.862	109.723	109.959	1.3	.2	.0	.0	.4
Video and audio ²	1.959	99.095	99.028	1.3	-.1	.4	-.1	.3
Education and communication ²	6.118	126.392	126.413	1.1	.0	.2	.1	.1
Education ²	2.380	209.453	209.452	4.5	.0	.5	.5	.3
Educational books and supplies199	548.418	547.576	6.1	-.2	.5	.7	-.1
Tuition, other school fees, and childcare	2.181	588.409	588.489	4.3	.0	.5	.4	.3
Communication ²	3.738	85.486	85.510	-1.1	.0	.0	-.1	.0
Information and information processing ²	3.605	83.139	83.163	-1.3	.0	.0	-.1	.0
Telephone services ^{1 2}	2.823	100.620	100.764	-.6	.1	.1	.0	.1
Information technology, hardware and services ⁵782	9.408	9.371	-4.1	-.4	-.3	-.3	-.4
Personal computers and peripheral equipment ⁶208	65.613	64.421	-11.8	-1.8	-.4	.5	-1.9
Other goods and services	3.950	420.462	421.000	1.7	.1	.0	.4	.2
Tobacco and smoking products ¹	1.450	848.791	852.435	2.4	.4	-.1	.1	.4
Personal care	2.500	207.847	207.747	1.3	.0	.0	.5	.0
Personal care products ¹717	161.716	160.954	-.2	-.5	.2	.5	-.5
Personal care services ¹572	232.222	232.313	.9	.0	.1	.4	.0
Miscellaneous personal services	1.027	368.036	368.816	2.9	.2	.1	.4	.5
Commodity and service group								
Commodities	43.898	189.073	187.472	4.5	-.8	-.5	-.3	-.3
Food and beverages	16.401	230.186	230.642	4.6	.2	.1	.1	.2
Commodities less food and beverages	27.497	166.502	164.072	4.5	-1.5	-.9	-.6	-.6
Nondurables less food and beverages	17.244	220.183	215.404	6.0	-2.2	-1.5	-.2	-.7
Apparel	3.668	126.764	123.203	5.2	-2.8	.2	.6	.1
Nondurables less food, beverages, and apparel	13.576	283.006	277.351	6.2	-2.0	-1.8	-.9	-.9
Durables	10.253	114.319	114.098	2.1	-.2	-.4	-.5	-.2
Services	56.102	262.535	262.954	2.2	.2	.2	.1	.2
Rent of shelter ⁴	29.504	238.318	238.834	1.9	.2	.3	.2	.2
Tenants' and household insurance ^{1 2}306	129.912	130.695	2.4	.6	.4	.3	.6
Energy services ³	4.175	189.671	189.060	1.1	-.3	-.5	-.6	-.3
Water and sewer and trash collection services ²	1.157	182.664	183.178	4.7	.3	.2	.2	.5
Household operations ^{1 2}364	155.567	155.744	1.7	.1	.3	.2	.1
Transportation services	5.994	271.172	271.174	2.9	.0	.2	.1	.2
Medical care services	4.038	433.269	434.051	3.7	.2	.6	.5	.4
Other services	10.563	301.609	302.364	2.0	.3	.2	.2	.4
Special indexes								
All items less food	84.685	221.324	220.479	2.9	-.4	-.2	-.1	.0
All items less shelter	70.189	216.274	215.189	3.7	-.5	-.3	-.2	-.1
All items less medical care	94.645	215.342	214.658	3.2	-.3	-.2	-.1	.0
Commodities less food	28.583	168.725	166.354	4.4	-1.4	-.9	-.6	-.6
Nondurables less food	18.329	220.944	216.421	5.7	-2.0	-1.5	-.1	-.6
Nondurables less food and apparel	14.662	277.198	272.053	5.8	-1.9	-1.7	-.7	-.8
Nondurables	33.644	226.140	223.793	5.3	-1.0	-.7	.0	-.3
Services less rent of shelter ⁴	26.598	257.664	257.915	2.4	.1	.2	.1	.3
Services less medical care services	52.065	250.753	251.150	2.0	.2	.2	.2	.3
Energy	10.946	240.073	233.943	6.9	-2.6	-2.1	-1.7	-1.3
All items less energy	89.054	221.720	221.735	2.8	.0	.1	.1	.2
All items less food and energy	73.739	220.404	220.325	2.3	.0	.1	.2	.2
Commodities less food and energy commodities	21.812	149.572	148.692	2.5	-.6	-.1	.1	-.1
Energy commodities	6.771	298.469	287.221	10.5	-3.8	-3.0	-2.2	-1.8
Services less energy services	51.927	270.500	271.036	2.3	.2	.3	.2	.3
Purchasing power of the consumer dollar (1982-84=\$1.00)	-	\$.449	\$.450	-	-	-	-	-
Purchasing power of the consumer dollar (1967=\$1.00)	-	\$.151	\$.151	-	-	-	-	-

¹ Not seasonally adjusted.

² Indexes on a December 1997=100 base.

³ This index series was calculated using a Laspeyres estimator. All other item stratum index series were calculated using a geometric means estimator.

⁴ Indexes on a December 1984=100 base

⁵ Indexes on a December 1988=100 base.

⁶ Indexes on a December 2007=100 base.

- Data not available.

NOTE: Index applies to a month as a whole, not to any specific date.

Table 5. Consumer Price Index for Urban Wage Earners and Clerical Workers (CPI-W): Seasonally adjusted U.S. city average, by expenditure category and commodity and service group

(1982-84=100, unless otherwise noted)

Expenditure category	Seasonally adjusted indexes				Seasonally adjusted annual rate percent change for					
					3 months ended—			6 months ended—		
	Sep. 2011	Oct. 2011	Nov. 2011	Dec. 2011	Mar. 2011	June 2011	Sep. 2011	Dec. 2011	June 2011	Dec. 2011
CPI-W										
All items	223.845	223.535	223.363	223.352	7.1	1.2	5.7	-0.9	4.1	2.4
Food and beverages	230.060	230.351	230.472	230.940	7.3	4.0	5.6	1.5	5.6	3.6
Food	230.030	230.337	230.457	230.939	7.7	4.1	6.0	1.6	5.9	3.8
Food at home	228.884	229.153	228.934	229.456	11.5	4.7	7.5	1.0	8.0	4.2
Cereals and bakery products	265.587	266.730	267.677	268.117	5.6	7.1	7.9	3.9	6.3	5.9
Meats, poultry, fish, and eggs	226.446	227.546	227.302	228.820	13.9	9.2	5.0	4.3	11.5	4.6
Dairy and related products ¹	218.406	218.451	217.557	217.503	8.6	12.7	14.0	-1.6	10.6	5.9
Fruits and vegetables	287.175	282.740	280.755	279.301	25.0	-12.2	12.3	-10.5	4.8	.2
Nonalcoholic beverages and beverage materials	167.262	168.076	168.479	168.789	10.3	5.7	3.0	3.7	8.0	3.3
Other food at home	199.568	200.240	200.154	200.840	7.3	5.4	7.0	2.6	6.3	4.8
Sugar and sweets ¹	211.591	212.276	209.091	209.639	4.4	4.0	10.4	-3.6	4.2	3.2
Fats and oils	224.718	225.509	227.310	231.283	25.4	10.0	9.1	12.2	17.5	10.6
Other foods	211.956	212.671	212.891	213.145	5.2	4.9	6.1	2.3	5.1	4.1
Other miscellaneous foods ^{1 2}	125.167	125.681	125.761	126.235	1.9	3.5	4.1	3.5	2.7	3.8
Food away from home ¹	233.257	233.622	234.240	234.666	2.5	3.2	3.8	2.4	2.9	3.1
Other food away from home ^{1 2}	164.421	165.008	165.228	165.205	3.0	1.7	2.2	1.9	2.3	2.1
Alcoholic beverages	229.060	229.130	229.262	229.522	1.7	3.4	1.0	.8	2.5	.9
Housing	216.896	217.175	217.376	217.701	2.0	1.5	2.9	1.5	1.7	2.2
Shelter	246.496	247.041	247.477	248.030	1.3	1.5	2.4	2.5	1.4	2.5
Rent of primary residence ³	253.029	253.907	254.476	255.184	1.8	1.2	3.4	3.5	1.5	3.4
Lodging away from home ²	140.409	138.160	138.422	138.405	-1.1	25.1	-7.9	-5.6	11.2	-6.8
Owners' equivalent rent of residences ^{3 4}	235.969	236.463	236.831	237.307	1.3	1.2	2.3	2.3	1.2	2.3
Owners' equivalent rent of primary residence ^{3 4}	235.959	236.454	236.821	237.299	1.3	1.2	2.3	2.3	1.2	2.3
Tenants' and household insurance ^{1 2}	129.090	129.562	129.912	130.695	-2.4	4.3	2.7	5.1	.9	3.9
Fuels and utilities	221.302	220.648	219.974	219.603	6.5	1.2	5.5	-3.0	3.9	1.1
Household energy	193.702	192.887	192.056	191.394	6.6	.4	5.8	-4.7	3.5	.4
Fuel oil and other fuels ¹	334.361	334.886	342.717	340.375	68.8	-2.7	-5.5	7.4	28.1	.8
Energy services ³	195.994	195.083	193.825	193.209	3.0	.7	6.8	-5.6	1.8	.4
Water and sewer and trash collection services ²	181.809	182.163	182.494	183.431	6.3	4.6	4.2	3.6	5.4	3.9
Household furnishings and operations	121.613	121.679	121.730	121.794	.2	1.4	2.4	.6	.8	1.5
Household operations ^{1 2}	154.718	155.235	155.567	155.744	-4	4.3	.4	2.7	1.9	1.5
Apparel	123.110	123.381	124.145	124.246	-1.5	12.6	6.4	3.7	5.3	5.1
Men's and boys' apparel	116.944	118.380	119.388	118.454	-2.9	17.6	6.6	5.3	6.9	6.0
Women's and girls' apparel	110.315	110.444	111.363	111.358	-1.9	14.1	7.0	3.8	5.8	5.4
Infants' and toddlers' apparel	119.637	118.953	120.347	122.982	-13.7	6.7	19.1	11.7	-4.0	15.3
Footwear	130.053	128.627	128.839	129.178	2.9	7.1	2.0	-2.7	5.0	-4
Transportation	218.765	216.031	214.037	212.368	26.0	-3.7	15.9	-11.2	10.2	1.5
Private transportation	215.526	212.729	210.680	208.957	26.3	-3.5	16.4	-11.6	10.4	1.4
New and used motor vehicles ²	100.694	100.304	100.029	99.543	4.3	12.3	1.4	-4.5	8.3	-1.6
New vehicles	144.429	144.033	143.590	143.357	6.4	9.6	.0	-2.9	8.0	-1.5
Used cars and trucks	153.401	152.535	152.333	150.895	2.5	16.7	4.6	-6.4	9.4	-1.0
Motor fuel	319.294	309.254	301.734	296.032	75.4	-20.6	44.0	-26.1	18.0	3.1
Gasoline (all types)	318.744	308.583	300.344	295.628	71.3	-20.8	45.2	-26.0	16.5	3.7
Motor vehicle parts and equipment ¹	145.652	145.326	146.151	147.223	4.5	11.1	3.3	4.4	7.8	3.9
Motor vehicle maintenance and repair ¹	258.001	258.440	258.342	258.355	1.0	2.8	4.6	.5	1.9	2.5
Public transportation	266.655	266.551	266.708	267.122	20.2	-7.9	4.9	.7	5.2	2.8
Medical care	404.101	406.170	408.043	409.570	2.9	3.3	2.7	5.5	3.1	4.1
Medical care commodities ¹	316.869	317.901	318.671	319.396	7.1	1.9	1.5	3.2	4.5	2.3
Medical care services	429.797	432.259	434.560	436.394	1.6	3.8	3.2	6.3	2.7	4.7
Professional services	340.515	341.718	342.285	343.065	2.4	1.6	2.0	3.0	2.0	2.5

See footnotes at end of table.

Table 5. Consumer Price Index for Urban Wage Earners and Clerical Workers (CPI-W): Seasonally adjusted U.S. city average, by expenditure category and commodity and service group-Continued

(1982-84=100, unless otherwise noted)

CPI-W	Seasonally adjusted indexes				Seasonally adjusted annual rate percent change for					
					3 months ended—			6 months ended—		
	Sep. 2011	Oct. 2011	Nov. 2011	Dec. 2011	Mar. 2011	June 2011	Sep. 2011	Dec. 2011	June 2011	Dec. 2011
Expenditure category										
Hospital and related services	650.292	653.945	658.879	662.235	2.7	7.5	4.0	7.6	5.1	5.7
Recreation ²	109.921	109.929	109.877	110.349	3.2	.7	-.3	1.6	2.0	.6
Video and audio ²	99.049	99.493	99.413	99.711	3.0	-2.4	1.9	2.7	.3	2.3
Education and communication ²	125.624	125.928	126.108	126.269	.7	.9	.6	2.1	.8	1.3
Education ²	206.130	207.239	208.172	208.774	5.0	4.0	3.7	5.2	4.5	4.5
Educational books and supplies	541.400	544.346	548.369	547.987	8.4	4.5	6.8	5.0	6.4	5.9
Tuition, other school fees, and childcare	578.907	582.018	584.481	586.366	4.7	3.9	3.4	5.3	4.3	4.3
Communication ²	85.530	85.570	85.517	85.534	-2.0	-1.1	-1.4	.0	-1.5	-.7
Information and information processing ²	83.182	83.223	83.170	83.188	-2.6	-1.2	-1.5	.0	-1.9	-.7
Telephone services ^{1 2}	100.475	100.616	100.620	100.764	-2.4	-2	-.7	1.2	-1.3	-.2
Information technology, hardware and services ⁵	9.482	9.455	9.425	9.384	-3.4	-4.7	-4.2	-4.1	-4.0	-4.1
Personal computers and peripheral equipment ⁶	66.005	65.750	66.076	64.788	-15.1	-10.1	-14.7	-7.2	-12.7	-11.0
Other goods and services	419.144	419.022	420.534	421.260	.6	.5	3.6	2.0	.6	2.8
Tobacco and smoking products ¹	848.513	847.868	848.791	852.435	1.3	-.9	7.4	1.9	.2	4.6
Personal care	206.855	206.852	207.903	207.951	.3	1.3	1.4	2.1	.8	1.8
Personal care products ¹	160.623	160.970	161.716	160.954	1.1	-2.2	-.4	.8	-.5	-.2
Personal care services ¹	231.139	231.409	232.222	232.313	-1	1.0	.6	2.0	.4	1.3
Miscellaneous personal services	366.100	366.640	368.253	370.030	1.5	2.8	3.0	4.4	2.2	3.7
Commodity and service group										
Commodities	191.372	190.348	189.684	189.089	14.1	.4	9.5	-4.7	7.0	2.2
Food and beverages	230.060	230.351	230.472	230.940	7.3	4.0	5.6	1.5	5.6	3.6
Commodities less food and beverages	169.769	168.215	167.235	166.205	18.2	-1.6	11.9	-8.1	7.9	1.4
Nondurables less food and beverages	225.168	221.806	221.403	219.962	25.1	-3.1	14.1	-8.9	10.1	2.0
Apparel	123.110	123.381	124.145	124.246	-1.5	12.6	6.4	3.7	5.3	5.1
Nondurables less food, beverages, and apparel	294.063	288.888	286.359	283.735	34.8	-8.6	18.9	-13.3	11.0	1.5
Durables	115.500	115.002	114.444	114.200	4.0	8.8	.3	-4.4	6.4	-2.1
Services	262.136	262.648	262.993	263.626	2.0	1.7	2.6	2.3	1.9	2.5
Rent of shelter ⁴	237.511	238.113	238.707	239.293	.8	1.2	2.7	3.0	1.0	2.9
Tenants' and household insurance ^{1 2}	129.090	129.562	129.912	130.695	-2.4	4.3	2.7	5.1	.9	3.9
Energy services ³	195.994	195.083	193.825	193.209	3.0	.7	6.8	-5.6	1.8	.4
Water and sewer and trash collection services ²	181.809	182.163	182.494	183.431	6.3	4.6	4.2	3.6	5.4	3.9
Household operations ^{1 2}	154.718	155.235	155.567	155.744	-.4	4.3	.4	2.7	1.9	1.5
Transportation services	269.601	270.174	270.407	270.923	5.2	1.7	2.6	2.0	3.4	2.3
Medical care services	429.797	432.259	434.560	436.394	1.6	3.8	3.2	6.3	2.7	4.7
Other services	300.175	300.871	301.416	302.758	1.7	1.3	1.4	3.5	1.5	2.4
Special indexes										
All items less food	222.557	222.138	221.915	221.818	7.0	.7	5.6	-1.3	3.8	2.1
All items less shelter	217.988	217.364	216.969	216.755	9.6	1.0	7.1	-2.2	5.2	2.3
All items less medical care	216.487	216.108	215.876	215.820	7.4	1.1	5.9	-1.2	4.2	2.3
Commodities less food	171.906	170.390	169.437	168.439	17.5	-1.4	11.4	-7.8	7.7	1.4
Nondurables less food	225.645	222.347	222.079	220.747	23.7	-2.8	13.4	-8.4	9.6	1.9
Nondurables less food and apparel	287.198	282.244	280.213	277.864	32.2	-7.7	17.3	-12.4	10.5	1.4
Nondurables	228.532	226.833	226.847	226.209	17.0	-.2	9.7	-4.0	8.0	2.6
Services less rent of shelter ⁴	257.577	258.101	258.375	259.214	2.7	1.9	2.5	2.6	2.3	2.5
Services less medical care services	250.450	250.871	251.321	251.987	1.6	1.5	2.6	2.5	1.5	2.5
Energy	254.922	249.471	245.282	242.089	44.5	-13.2	28.1	-18.7	12.0	2.1
All items less energy	221.083	221.394	221.708	222.083	3.0	3.3	3.0	1.8	3.1	2.4
All items less food and energy	219.660	219.972	220.326	220.680	2.0	3.1	2.3	1.9	2.6	2.1
Commodities less food and energy commodities	149.394	149.226	149.345	149.143	2.1	6.4	2.4	-.7	4.2	-.9
Energy commodities	321.564	311.879	304.912	299.309	75.1	-19.9	41.4	-24.9	18.4	3.0
Services less energy services	269.335	270.009	270.537	271.311	2.0	1.8	2.3	3.0	1.9	2.6

¹ Not seasonally adjusted.

² Indexes on a December 1997=100 base.

³ This index series was calculated using a Laspeyres estimator. All other item stratum index series were calculated using a geometric means estimator.

⁴ Indexes on a December 1984=100 base

⁵ Indexes on a December 1988=100 base.

⁶ Indexes on a December 2007=100 base.

NOTE: Index applies to a month as a whole, not to any specific date.

Table 6. Consumer Price Index for Urban Wage Earners and Clerical Workers (CPI-W): Selected areas, all items index

(1982-84=100, unless otherwise noted)

CPI-W	Pricing schedule 1	All items									
		Indexes				Percent change to Dec.2011 from—			Percent change to Nov.2011 from—		
		Sep. 2011	Oct. 2011	Nov. 2011	Dec. 2011	Dec. 2010	Oct. 2011	Nov. 2011	Nov. 2010	Sep. 2011	Oct. 2011
U.S. city average	M	223.688	223.043	222.813	222.166	3.2	-0.4	-0.3	3.8	-0.4	-0.1
Region and area size²											
Northeast urban	M	241.838	241.549	241.167	240.431	3.2	-5	-3	3.5	-3	-2
Size A - More than 1,500,000	M	241.752	241.355	240.912	240.148	3.0	-5	-3	3.4	-3	-2
Size B/C - 50,000 to 1,500,000 ³	M	147.039	146.999	146.843	146.432	3.4	-4	-3	3.8	-1	-1
Midwest urban	M	213.626	212.038	211.969	211.459	3.1	-3	-2	3.7	-8	.0
Size A - More than 1,500,000	M	213.070	211.604	211.505	210.962	3.0	-3	-3	3.6	-7	.0
Size B/C - 50,000 to 1,500,000 ³	M	140.363	139.157	139.048	138.741	3.2	-3	-2	3.7	-9	-1
Size D - Nonmetropolitan (less than 50,000)	M	212.520	211.193	211.533	211.040	3.4	-1	-2	3.7	-5	.2
South urban	M	218.787	218.109	218.030	217.463	3.6	-3	-3	4.1	-3	.0
Size A - More than 1,500,000	M	220.130	219.075	219.215	218.603	3.3	-2	-3	3.8	-4	.1
Size B/C - 50,000 to 1,500,000 ³	M	140.229	139.879	139.721	139.299	3.6	-4	-3	4.3	-4	-1
Size D - Nonmetropolitan (less than 50,000)	M	225.478	225.364	225.404	225.422	4.1	.0	.0	4.4	.0	.0
West urban	M	224.237	224.268	223.785	222.968	2.8	-6	-4	3.5	-2	-2
Size A - More than 1,500,000	M	226.764	226.759	226.250	225.267	2.7	-7	-4	3.4	-2	-2
Size B/C - 50,000 to 1,500,000 ³	M	138.770	138.884	138.587	138.157	2.9	-5	-3	3.6	-1	-2
Size classes											
A ⁴	M	206.484	205.846	205.627	204.954	3.0	-4	-3	3.5	-4	-1
B/C ³	M	140.883	140.505	140.330	139.931	3.4	-4	-3	4.0	-4	-1
D	M	219.494	218.914	218.973	218.780	3.7	-1	-1	4.0	-2	.0
Selected local areas⁵											
Chicago-Gary-Kenosha, IL-IN-WI	M	215.005	214.145	213.704	212.597	2.5	-7	-5	3.4	-6	-2
Los Angeles-Riverside-Orange County, CA ...	M	226.096	226.116	225.786	224.444	2.2	-7	-6	3.2	-1	-1
New York-Northern N.J.-Long Island, NY-NJ-CT-PA	M	246.877	246.297	245.546	244.586	3.0	-7	-4	3.3	-5	-3
Boston-Brockton-Nashua, MA-NH-ME-CT	1	246.424	-	246.349	-	-	-	-	3.1	.0	-
Cleveland-Akron, OH	1	204.981	-	202.824	-	-	-	-	2.7	-1.1	-
Dallas-Fort Worth, TX	1	214.567	-	214.581	-	-	-	-	4.7	.0	-
Washington-Baltimore, DC-MD-VA-WV ⁶	1	148.352	-	148.038	-	-	-	-	3.6	-2	-
Atlanta, GA	2	-	208.362	-	207.654	3.1	-3	-	-	-	-
Detroit-Ann Arbor-Flint, MI	2	-	209.427	-	210.199	3.9	.4	-	-	-	-
Houston-Galveston-Brazoria, TX	2	-	200.464	-	199.480	3.4	-5	-	-	-	-
Miami-Fort Lauderdale, FL	2	-	230.728	-	230.394	3.5	-1	-	-	-	-
Philadelphia-Wilmington-Atlantic City, PA-NJ-DE-MD	2	-	236.478	-	235.194	3.1	-5	-	-	-	-
San Francisco-Oakland-San Jose, CA	2	-	232.371	-	231.109	3.1	-5	-	-	-	-
Seattle-Tacoma-Bremerton, WA	2	-	232.697	-	231.297	3.8	-6	-	-	-	-

¹ Foods, fuels, and several other items priced every month in all areas; most other goods and services priced as indicated:

M - Every month.

1 - January, March, May, July, September, and November.

2 - February, April, June, August, October, and December.

² Regions defined as the four Census regions. See technical notes.

³ Indexes on a December 1996=100 base.

⁴ Indexes on a December 1986=100 base.

⁵ In addition, the following metropolitan areas are published semiannually and appear in Tables 34 and 39 of the January and July issues of the CPI Detailed Report: Anchorage, AK; Cincinnati-Hamilton, OH-KY-IN; Denver-Boulder-Greeley, CO; Honolulu, HI; Kansas City, MO-KS; Milwaukee-Racine, WI; Minneapolis-St. Paul, MN-WI; Phoenix-Mesa, AZ; Pittsburgh, PA; Portland-Salem, OR-WA; St. Louis, MO-IL; San Diego, CA;

Tampa-St. Petersburg-Clearwater, FL.

⁶ Indexes on a November 1996=100 base.

- Data not available.

NOTE: Local area indexes are byproducts of the national CPI program. Each local index has a smaller sample size than the national index and is, therefore, subject to substantially more sampling and other measurement error. As a result, local area indexes show greater volatility than the national index, although their long-term trends are similar. Therefore, the Bureau of Labor Statistics strongly urges users to consider adopting the national average CPI for use in their escalator clauses.

NOTE: Index applies to a month as a whole, not to any specific date.

Table 7. Chained Consumer Price Index for All Urban Consumers (C-CPI-U): U.S. city average, by expenditure category and commodity and service group

(December 1999=100, unless otherwise noted)

C-CPI-U	Relative importance, 2007-2008	Unadjusted indexes		Unadjusted percent change to Dec. 2011 from—	
		Nov. 2011	Dec. 2011	Dec. 2010	Nov. 2011
		Expenditure category			
All items	100.000	130.066	129.719	2.8	-0.3
Food and beverages	14.519	134.171	134.423	4.4	.2
Food	13.493	134.494	134.772	4.6	.2
Food at home	7.780	130.468	130.777	5.8	.2
Food away from home	5.712	139.972	140.202	2.9	.2
Alcoholic beverages	1.027	130.692	130.624	1.1	-.1
Housing	42.074	130.194	130.301	1.8	.1
Shelter	32.119	133.712	133.914	1.9	.2
Fuels and utilities	5.231	159.730	159.240	1.9	-.3
Household furnishings and operations	4.724	92.441	92.475	.7	.0
Apparel	3.772	95.243	92.266	4.0	-3.1
Transportation	17.199	142.352	140.488	5.2	-1.3
Private transportation	16.013	143.221	141.264	5.3	-1.4
Public transportation	1.186	131.272	130.566	3.7	-.5
Medical care	6.294	156.542	156.863	3.4	.2
Medical care commodities	1.570	137.526	137.778	3.1	.2
Medical care services	4.723	163.537	163.884	3.5	.2
Recreation	6.625	101.658	101.796	.0	.1
Education and communication	6.288	113.913	113.836	1.0	-.1
Education	2.804	195.884	195.882	4.4	.0
Communication	3.484	70.896	70.810	-1.7	-.1
Other goods and services	3.229	143.798	143.811	2.7	.0
Commodity and service group					
Services	59.383	138.534	138.684	2.1	.1
Commodities	40.617	119.922	118.947	3.8	-.8
Durables	10.376	80.807	80.673	.7	-.2
Nondurables	30.241	140.452	139.001	4.8	-1.0
All items less food and energy	76.901	122.630	122.530	2.0	-.1
Energy	9.606	202.191	197.356	6.3	-2.4

Indexes for 2011 are initial estimates. Indexes for 2010 are interim adjustments.
NOTE: Index applies to a month as a whole, not to any specific date.

Table 1A. Consumer Price Index for All Urban Consumers (CPI-U): U.S. city average, by expenditure category and commodity and service group

(1982-84=100, unless otherwise noted)

CPI-U	Annual average 2010	Annual average 2011	Percent change from 2010 to 2011
Expenditure category			
All items	218.056	224.939	3.2
All items (1967=100)	653.198	673.818	-
Food and beverages	219.984	227.866	3.6
Food	219.625	227.842	3.7
Food at home	215.836	226.201	4.8
Cereals and bakery products	250.449	260.311	3.9
Meats, poultry, fish, and eggs	207.694	223.161	7.4
Dairy and related products	199.245	212.745	6.8
Fruits and vegetables	273.458	284.662	4.1
Nonalcoholic beverages and beverage materials	161.602	166.790	3.2
Other food at home	191.124	197.358	3.3
Sugar and sweets	201.242	207.832	3.3
Fats and oils	200.587	219.163	9.3
Other foods	204.553	209.292	2.3
Other miscellaneous foods ¹	121.683	123.996	1.9
Food away from home	226.114	231.401	2.3
Other food away from home ¹	159.276	162.794	2.2
Alcoholic beverages	223.291	226.685	1.5
Housing	216.256	219.102	1.3
Shelter	248.396	251.646	1.3
Rent of primary residence ²	249.385	253.638	1.7
Lodging away from home ¹	133.656	137.401	2.8
Owners' equivalent rent of residences ^{2 3}	256.584	259.570	1.2
Owners' equivalent rent of primary residence ^{2 3}	256.578	259.553	1.2
Tenants' and household insurance ¹	125.682	127.379	1.4
Fuels and utilities	214.187	220.367	2.9
Household energy	189.286	193.648	2.3
Fuel oil and other fuels	275.132	337.123	22.5
Energy services ²	192.886	194.386	.8
Household furnishings and operations	125.490	124.943	-.4
Apparel	119.503	122.111	2.2
Men's and boys' apparel	111.914	114.698	2.5
Women's and girls' apparel	107.081	109.166	1.9
Infants' and toddlers' apparel	114.180	113.571	-.5
Footwear	127.988	128.482	.4
Transportation	193.396	212.366	9.8
Private transportation	188.747	207.641	10.0
New and used motor vehicles ¹	97.149	99.770	2.7
New vehicles	138.005	141.883	2.8
Used cars and trucks	143.128	149.011	4.1
Motor fuel	239.178	302.619	26.5
Gasoline (all types)	238.594	301.694	26.4
Motor vehicle parts and equipment	136.995	143.909	5.0
Motor vehicle maintenance and repair	247.954	253.099	2.1
Public transportation	251.351	269.403	7.2
Medical care	388.436	400.258	3.0
Medical care commodities	314.717	324.089	3.0
Medical care services	411.208	423.810	3.1
Professional services	328.186	335.666	2.3
Hospital and related services	607.679	641.488	5.6
Recreation ¹	113.313	113.357	.0

See footnotes at end of table.

Table 1A. Consumer Price Index for All Urban Consumers (CPI-U): U.S. city average, by expenditure category and commodity and service group-Continued

(1982-84=100, unless otherwise noted)

CPI-U	Annual average 2010	Annual average 2011	Percent change from 2010 to 2011
Expenditure category			
Video and audio ¹	99.122	98.401	-0.7
Education and communication ¹	129.919	131.466	1.2
Education ¹	199.337	207.768	4.2
Educational books and supplies	505.569	529.545	4.7
Tuition, other school fees, and childcare	573.174	597.208	4.2
Communication ¹	84.681	83.345	-1.6
Information and information processing ¹	81.513	79.964	-1.9
Telephone services ¹	102.379	101.209	-1.1
Information technology, hardware and services ⁴	9.413	9.030	-4.1
Personal computers and peripheral equipment ⁵	76.377	68.901	-9.8
Other goods and services	381.291	387.224	1.6
Tobacco and smoking products	807.330	834.769	3.4
Personal care	206.643	208.556	.9
Personal care products	161.062	160.529	-.3
Personal care services	229.614	230.800	.5
Miscellaneous personal services	354.052	362.854	2.5
Commodity and service group			
Commodities	174.566	183.862	5.3
Food and beverages	219.984	227.866	3.6
Commodities less food and beverages	150.392	159.943	6.4
Nondurables less food and beverages	189.916	208.427	9.7
Apparel	119.503	122.111	2.2
Nondurables less food, beverages, and apparel	238.053	266.957	12.1
Durables	111.324	112.557	1.1
Services	261.274	265.762	1.7
Rent of shelter ³	258.823	262.208	1.3
Transportation services	259.823	268.002	3.1
Other services	309.602	314.431	1.6
Special indexes			
All items less food	217.828	224.503	3.1
All items less shelter	208.643	217.048	4.0
All items less medical care	209.689	216.325	3.2
Commodities less food	152.990	162.409	6.2
Nondurables less food	191.927	209.615	9.2
Nondurables less food and apparel	235.601	262.123	11.3
Nondurables	205.271	219.049	6.7
Services less rent of shelter ³	284.368	290.554	2.2
Services less medical care services	249.569	253.554	1.6
Energy	211.449	243.909	15.4
All items less energy	220.458	224.806	2.0
All items less food and energy	221.337	225.008	1.7
Commodities less food and energy commodities	143.588	145.499	1.3
Energy commodities	242.636	306.445	26.3
Services less energy services	268.278	273.057	1.8
Purchasing power of the consumer dollar (1982-84=\$1.00)	\$.459	\$.445	-
Purchasing power of the consumer dollar (1967=\$1.00)	\$.153	\$.148	-

¹ Indexes on a December 1997=100 base.

² This index series was calculated using a Laspeyres estimator. All other item stratum index series were calculated using a geometric means estimator.

³ Indexes on a December 1982=100 base.

⁴ Indexes on a December 1988=100 base.

⁵ Indexes on a December 2007=100 base.

- Data not available.

Table 4A. Consumer Price Index for Urban Wage Earners and Clerical Workers (CPI-W): U.S. city average, by expenditure category and commodity and service group

(1982-84=100, unless otherwise noted)

CPI-W	Annual average 2010	Annual average 2011	Percent change from 2010 to 2011
Expenditure category			
All items	213.967	221.575	3.6
All items (1967=100)	637.342	660.005	-
Food and beverages	219.182	227.276	3.7
Food	218.730	227.125	3.8
Food at home	214.638	225.181	4.9
Cereals and bakery products	251.024	261.085	4.0
Meats, poultry, fish, and eggs	207.431	223.191	7.6
Dairy and related products	197.992	211.772	7.0
Fruits and vegetables	270.713	282.180	4.2
Nonalcoholic beverages and beverage materials	161.214	166.067	3.0
Other food at home	190.294	196.512	3.3
Sugar and sweets	200.035	206.668	3.3
Fats and oils	200.909	219.844	9.4
Other foods	204.577	209.273	2.3
Other miscellaneous foods ¹	121.872	124.148	1.9
Food away from home	226.204	231.504	2.3
Other food away from home ¹	159.794	163.841	2.5
Alcoholic beverages	224.368	228.041	1.6
Housing	212.880	215.810	1.4
Shelter	242.309	245.526	1.3
Rent of primary residence ²	247.725	251.857	1.7
Lodging away from home ¹	135.119	138.828	2.7
Owners' equivalent rent of residences ^{2 3}	232.461	235.147	1.2
Owners' equivalent rent of primary residence ^{2 3}	232.462	235.141	1.2
Tenants' and household insurance ¹	126.739	128.563	1.4
Fuels and utilities	212.885	218.859	2.8
Household energy	187.272	191.522	2.3
Fuel oil and other fuels	277.433	336.592	21.3
Energy services ²	191.552	193.519	1.0
Water and sewer and trash collection services ¹	171.446	179.953	5.0
Household furnishings and operations	121.555	121.109	-4
Household operations ¹	152.707	154.495	1.2
Apparel	118.733	121.293	2.2
Men's and boys' apparel	111.811	114.971	2.8
Women's and girls' apparel	106.360	108.733	2.2
Infants' and toddlers' apparel	117.415	116.753	-6
Footwear	127.593	128.560	.8
Transportation	192.560	213.296	10.8
Private transportation	189.257	209.939	10.9
New and used motor vehicles ¹	96.271	99.205	3.0
New vehicles	139.044	142.866	2.7
Used cars and trucks	144.007	150.010	4.2
Motor fuel	240.094	303.848	26.6
Gasoline (all types)	239.629	303.067	26.5
Motor vehicle parts and equipment	136.998	143.796	5.0
Motor vehicle maintenance and repair	250.543	255.760	2.1
Public transportation	248.713	266.151	7.0
Medical care	389.766	402.187	3.2
Medical care commodities	306.257	315.845	3.1
Medical care services	414.273	427.551	3.2
Professional services	331.456	339.328	2.4

See footnotes at end of table.

Table 4A. Consumer Price Index for Urban Wage Earners and Clerical Workers (CPI-W): U.S. city average, by expenditure category and commodity and service group-Continued

(1982-84=100, unless otherwise noted)

CPI-W	Annual average 2010	Annual average 2011	Percent change from 2010 to 2011
Expenditure category			
Hospital and related services	608.516	644.431	5.9
Recreation ¹	109.812	109.898	.1
Video and audio ¹	99.643	99.087	-6
Education and communication ¹	124.891	125.520	.5
Education ¹	196.606	204.761	4.1
Educational books and supplies	508.386	534.846	5.2
Tuition, other school fees, and childcare	552.958	575.357	4.1
Communication ¹	87.317	85.789	-1.7
Information and information processing ¹	85.126	83.447	-2.0
Telephone services ¹	102.086	100.626	-1.4
Information technology, hardware and services ⁴	9.960	9.571	-3.9
Personal computers and peripheral equipment ⁵	76.273	68.439	-10.3
Other goods and services	409.278	416.899	1.9
Tobacco and smoking products	812.347	839.665	3.4
Personal care	204.299	206.361	1.0
Personal care products	161.174	161.045	-.1
Personal care services	229.824	230.958	.5
Miscellaneous personal services	355.502	364.346	2.5
Commodity and service group			
Commodities	177.545	188.157	6.0
Food and beverages	219.182	227.276	3.7
Commodities less food and beverages	155.064	166.459	7.3
Nondurables less food and beverages	198.517	220.100	10.9
Apparel	118.733	121.293	2.2
Nondurables less food, beverages, and apparel	252.481	286.167	13.3
Durables	112.513	114.313	1.6
Services	256.628	260.925	1.7
Rent of shelter ³	233.507	236.603	1.3
Tenants' and household insurance ¹	126.739	128.563	1.4
Energy services ²	191.552	193.519	1.0
Water and sewer and trash collection services ¹	171.446	179.953	5.0
Household operations ¹	152.707	154.495	1.2
Transportation services	259.985	268.161	3.1
Medical care services	414.273	427.551	3.2
Other services	296.066	299.544	1.2
Special indexes			
All items less food	212.938	220.401	3.5
All items less shelter	205.943	215.223	4.5
All items less medical care	206.828	214.226	3.6
Commodities less food	157.422	168.646	7.1
Nondurables less food	200.147	220.793	10.3
Nondurables less food and apparel	248.965	279.965	12.5
Nondurables	209.360	224.728	7.3
Services less rent of shelter ³	251.210	256.386	2.1
Services less medical care services	245.533	249.355	1.6
Energy	211.926	246.086	16.1
All items less energy	215.173	219.598	2.1
All items less food and energy	214.835	218.461	1.7
Commodities less food and energy commodities	145.728	148.050	1.6
Energy commodities	242.805	306.719	26.3
Services less energy services	263.713	268.270	1.7
Purchasing power of the consumer dollar (1982-84=\$1.00)	\$.467	\$.451	-
Purchasing power of the consumer dollar (1967=\$1.00)	\$.157	\$.152	-

¹ Indexes on a December 1997=100 base.

² This index series was calculated using a Laspeyres estimator. All other item stratum index series were calculated using a geometric means estimator.

³ Indexes on a December 1984=100 base

⁴ Indexes on a December 1988=100 base.

⁵ Indexes on a December 2007=100 base.

- Data not available.